



WASATCH CHOICE
— 2050 —

IS TRAIL-ORIENTED DEVELOPMENT: THE NEXT "TOD?"



PANELISTS



Matthew Norris

Senior Associate, Content
Urban Land Institute



Alexander Grgurich

Development Analyst
Nelson Construction & Development



Nora Shepard

Planning Director
Salt Lake City Planning Commission

ACTIVE TRANSPORTATION: AN IMPORTANT TREND

- ➔ 50% of U.S. residents say that walkability is a top priority or a high priority when considering where to live
- ➔ Bicycling is the fastest-growing form of transportation for commuters in the United States



TRAIL-ORIENTED DEVELOPMENT

- ➔ The value of properties within a block of the Indianapolis Cultural Trail has risen 148% since its opening in 2008
- ➔ More than \$750 million worth of new housing has been built along its
- Minneapolis' Midtown Greenway



KEY ACTIVE TRANSPORTATION DEVELOPMENT FEATURES

- ➔ **Dedicated bicycle storage areas**
- ➔ **Extra wide hallways or bike elevators**
- ➔ **Bicycle workrooms**
- ➔ **Bike washing stations**
- ➔ **Bike valet service**
- ➔ **Showers and locker facilities**
- ➔ **Bicycle parts or mechanic available on-site**
- ➔ **On-site bike rentals or bike share service**
- ➔ **Bicycle park and ride**
- ➔ **Project investments in public active transportation infrastructure**



(Sarah Dorio)



(Jane G. Mahaffie)

MOZAIC: MINNEAPOLIS, MN

Developer:

Ackerberg Group

Project Type:

Mixed-use

Building Size:

77,000 square feet (7,200 sq m); 200,000 square feet (18,600 sq m) in new phase

ACTIVE-TRANSPORTATION-FRIENDLY FEATURES ▼

- ➔ **Pedestrian and bicyclist bridge and ramp**
- ➔ **Bicycle storage**
- ➔ **Locker room with showers**



THE CIRCUIT TRAILS: GREATER PHILADELPHIA, PA

Project type:

Off-road trails

Usage:

Up to 1 million pedestrians and bicyclists annually

Length:

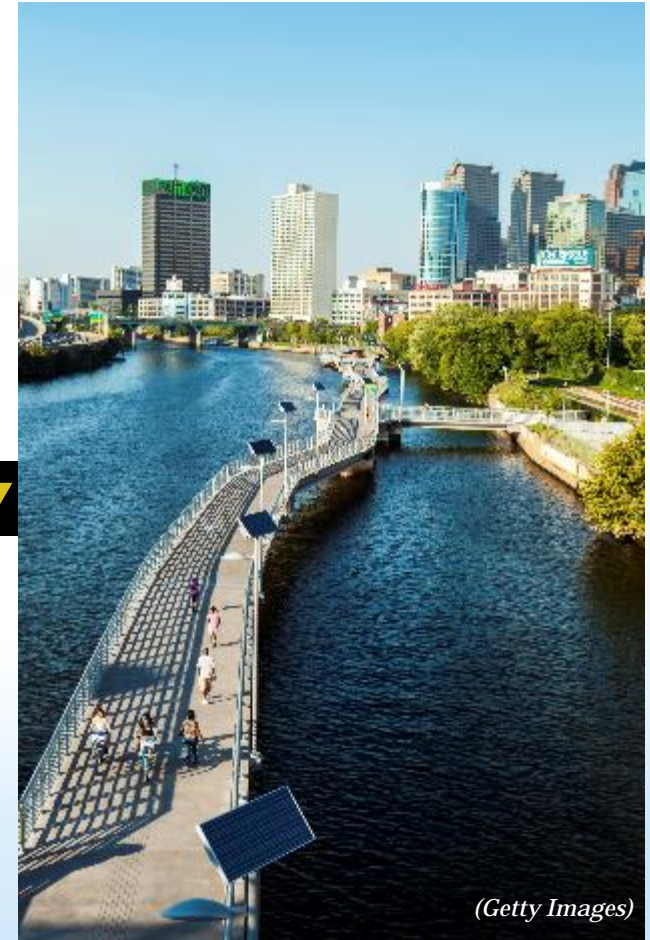
Planned 750 miles (1,200 km); 300 miles (483 km) currently complete

Cost:

Varies, depending on trail alignments, location, infrastructure

DEVELOPMENT, QUALITY OF LIFE AND ECONOMIC IMPACTS ▼

- ➔ **Schuylkill River Trail generated \$7.3 million in direct economic impact along its route in 2009**
- ➔ **Properties within a quarter-mile (0.4 km) of the Radnor Trail in Radnor, PA were valued on average \$69,000 higher than other area properties**



(Getty Images)

BICI FLATS • DES MOINES, IOWA



NELSON
CONSTRUCTION
& DEVELOPMENT

Alexander Grgurich

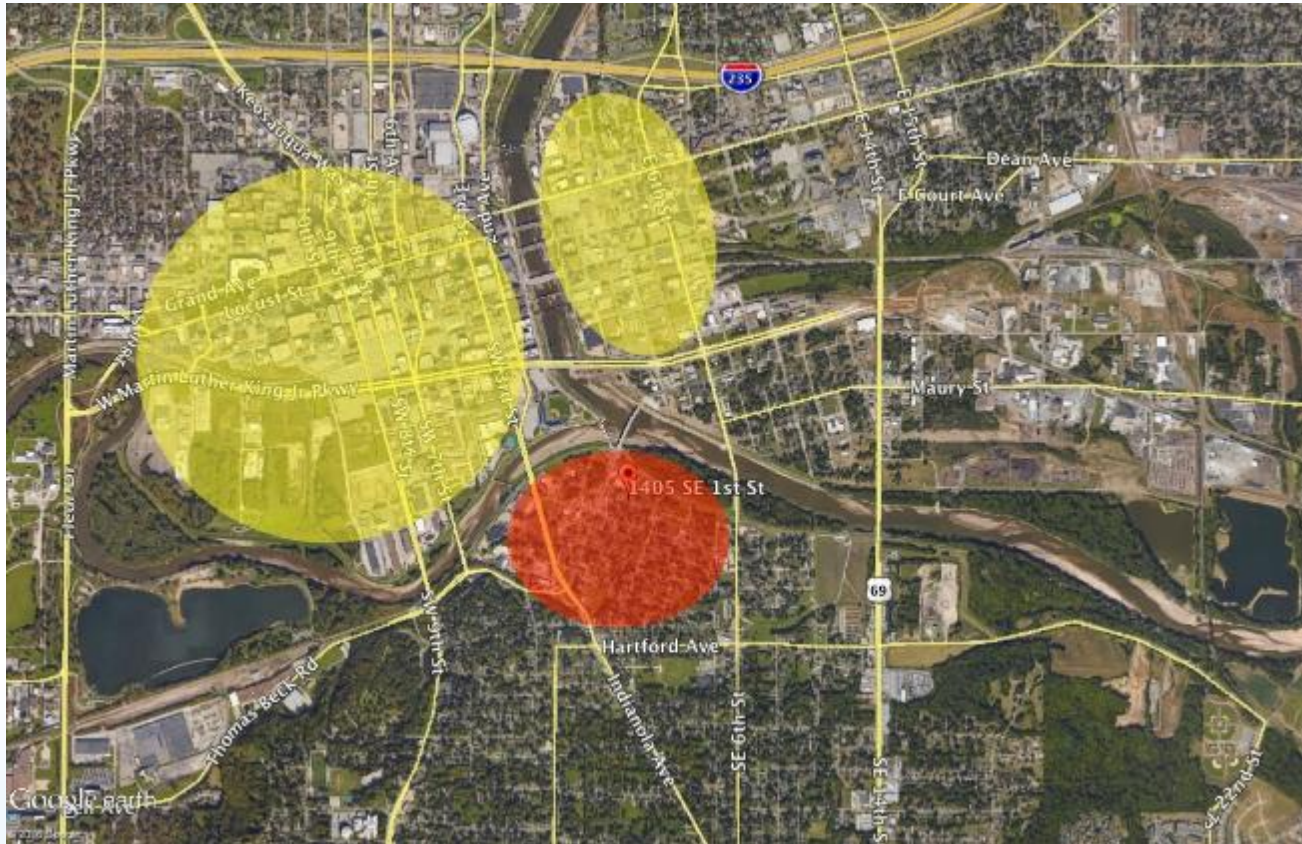
Nelson Construction & Development

alexander@nelsonconstruct.com

BICI FLATS • DES MOINES, IOWA

bici
flats

BICI FLATS • DES MOINES, IOWA



BICI FLATS • DES MOINES, IOWA



BICI FLATS • DES MOINES, IOWA



BICI FLATS • DES MOINES, IOWA



BICI FLATS • DES MOINES, IOWA



BICI FLATS • DES MOINES, IOWA



BICI FLATS • DES MOINES, IOWA



BICI FLATS • DES MOINES, IOWA



BICI FLATS • DES MOINES, IOWA



SALT LAKE CITY EFFORTS



PLAN SALT LAKE GUIDING PRINCIPAL

A transportation and mobility network that is safe, accessible, reliable, affordable, and sustainable, providing real choices and connecting people with places.



DRAFT

EAST BENCH MASTER PLAN



You are here

THE WESTSIDE MASTER PLAN

Adopted December 3, 2014

THE SALT LAKE CITY PLANNING DIVISION

Salt Lake City PEDESTRIAN & BICYCLE Master Plan

Prepared for Salt Lake City
by Alta Planning + Design
December 2015



THE DOWNTOWN PLAN

DOWNTOWN'S STORY FROM TOMORROW



A VISION AND POLICY PLAN PROMOTING DOWNTOWN'S AS A LAKE CITY
 AS AN INTERNATIONALLY-RECOGNIZED DESTINATION AND A VIBRANT NEIGHBORHOOD
 DEFINED BY MOUNTAIN BEAUTY AND THE BEST QUALITY OF LIFE IN THE COUNTRY
 A DOWNTOWN FOR ALL AGES

ADOPTED May 24, 2016



PEDESTRIAN AND BICYCLE MASTER PLAN

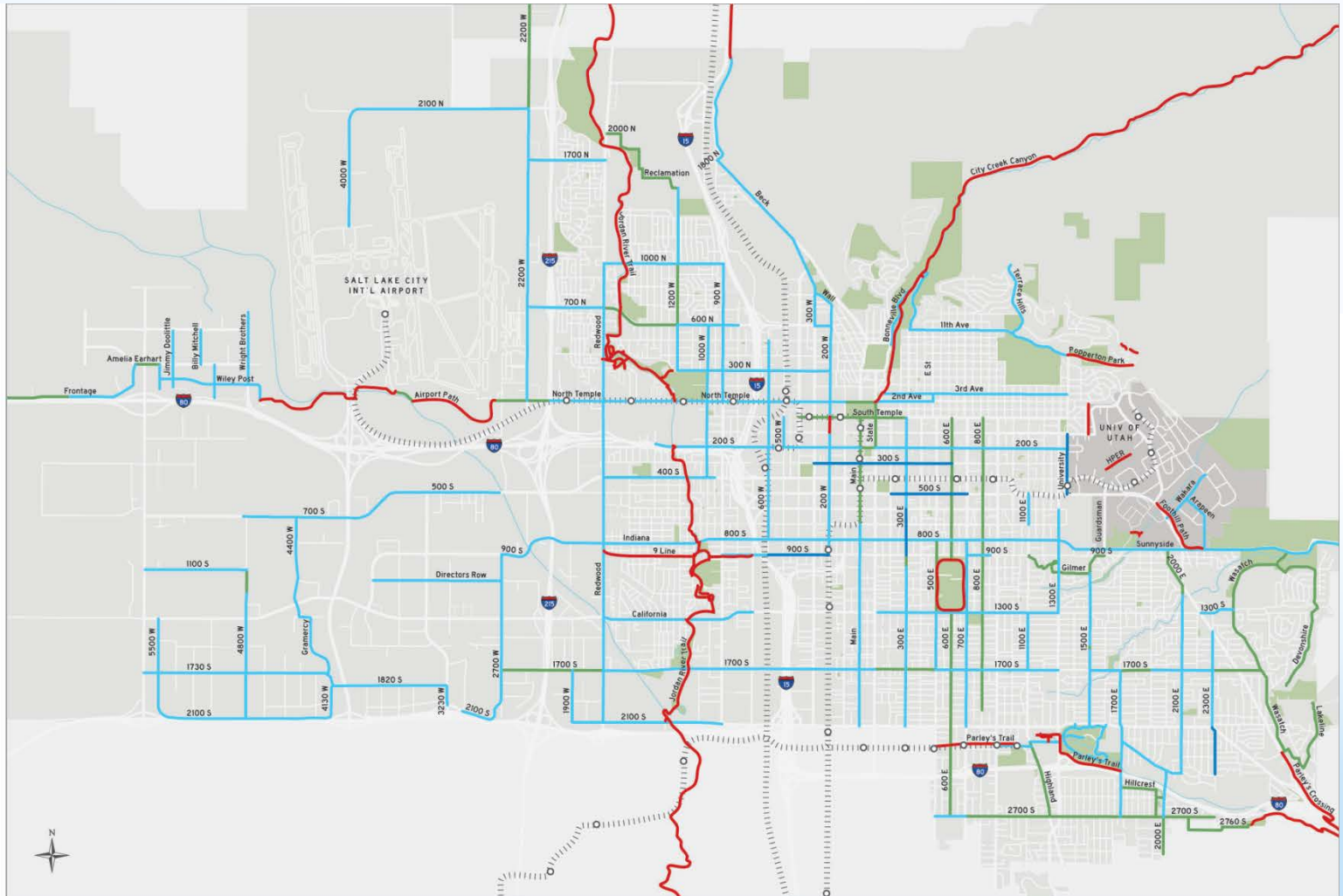
Existing Bikeways

- Multi-Use Paths
- Buffered or Protected Bike Lanes
- Bike Lanes
- Shared Roadways*

Existing Transit Facilities

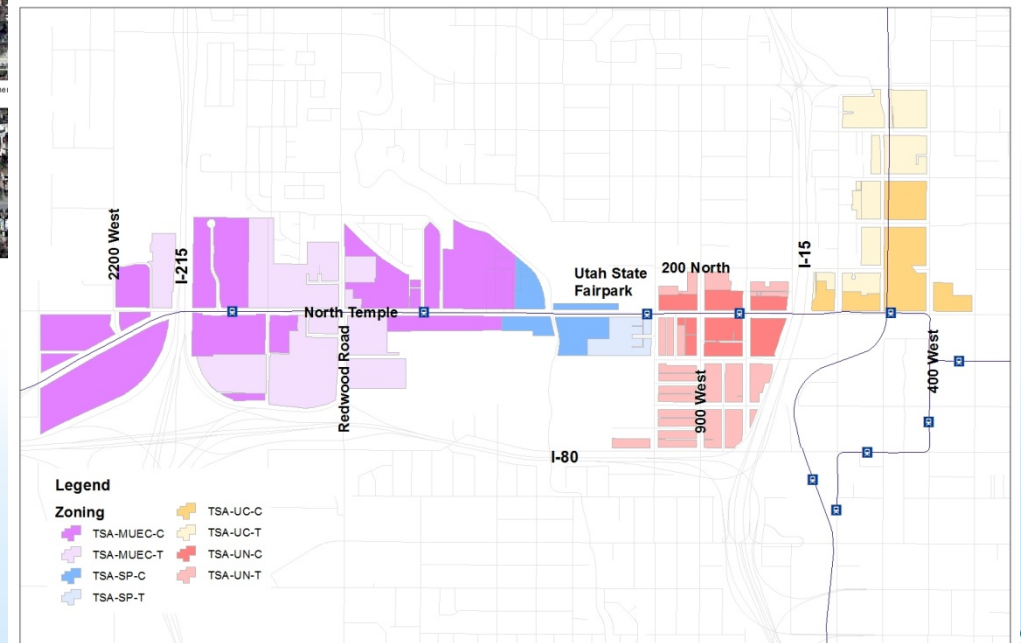
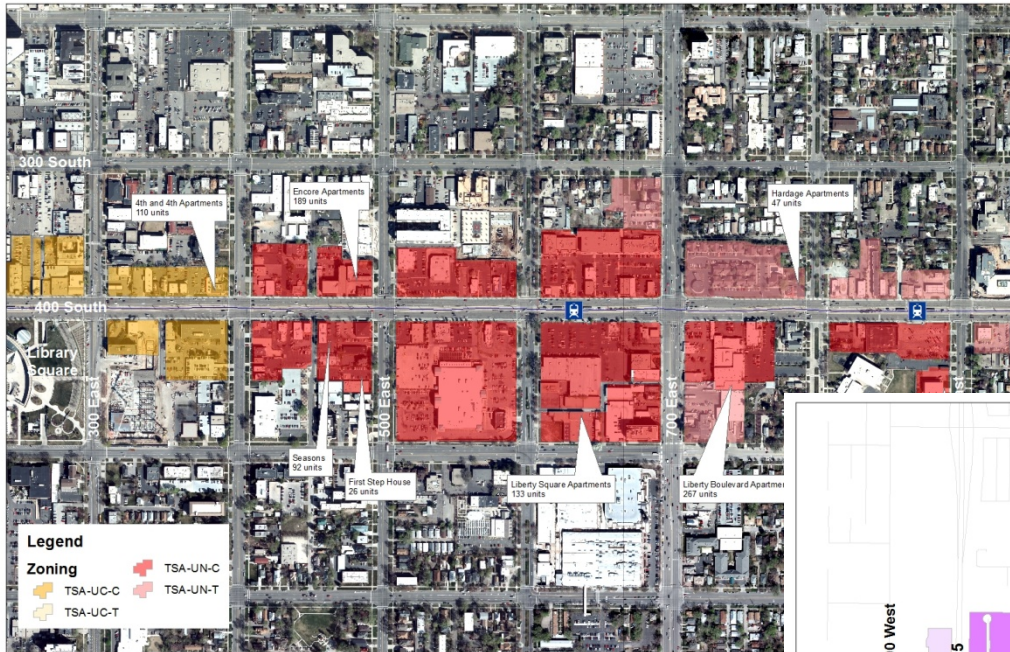
- TRAX/Streetcar/FrontRunner Stop
- ▬▬▬▬▬ TRAX/Streetcar/FrontRunner Line

*Includes marked & signed shared roadways

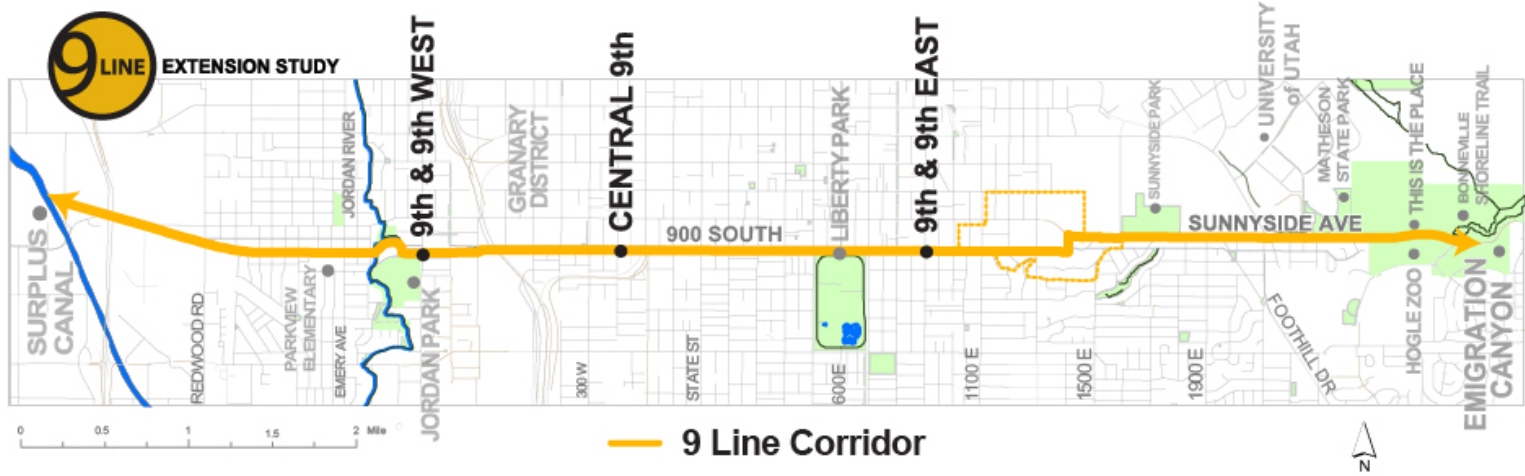


0 0.5 1 2 Miles
Map Produced: 11/21/2014

ZONING



ON THE GROUND



AIR QUALITY!!!!!!



CASE STUDY



- Close to Trax
- Bike Racks and Wash
- Close to Downtown Business District



THANKS!

Nora Shepard, AICP

Director, Salt Lake City Planning Division

Department of Communities and Neighborhoods

451 South State Street, Room 406

Salt Lake City, UT 84114

Nora.shepard@slcgov.com

www.SLCGOV.COM

801-535-7226