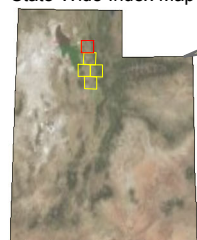


LEGEND



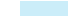









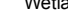











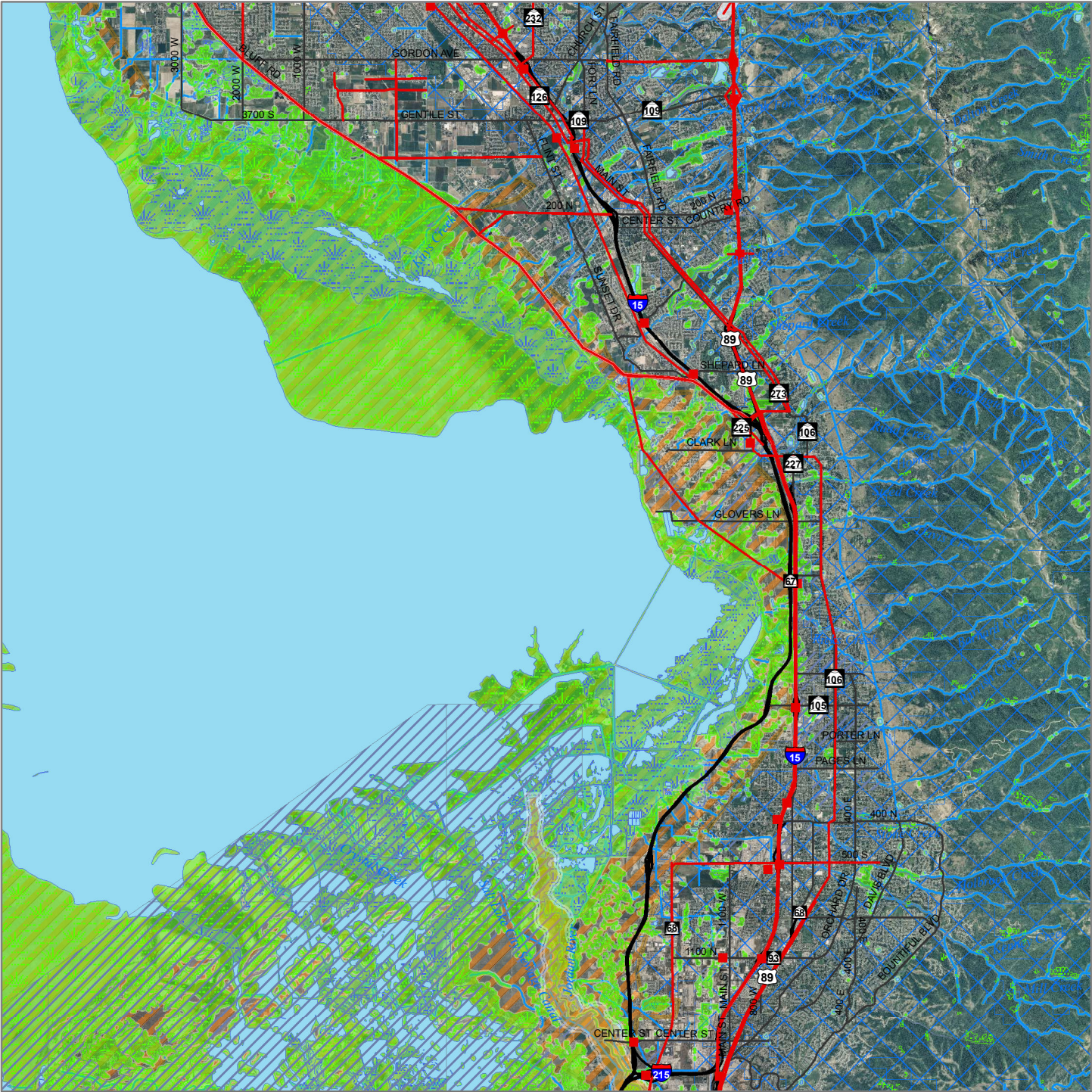
N

1:200,000

2

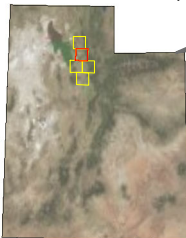
Miles

- | | | | | | |
|---|-----------------------|--|-----------------------------------|---|---------------------------|
|  | Interstate Highway |  | Ecological Hotspots |  | Canal Buffers |
|  | US Highway | | | | |
|  | State Road |  | Rare Plants | | |
|  | Project |  | Wetlands |  | Lake & Streams Buffers |
|  | Potential Impact Area | | |  | Tier 1 |
| | |  | Conservation and Mitigation Areas |  | Tier 2 |
|  | Impaired Waters | | |  | Tier 3 |
|  | Streams & Canals |  | Water Quality Buffers | | |
|  | Lakes |  | Floodplains |  | Wetlands Buffer
Tier 1 |
| | | | |  | Tier 2 |
| | | | |  | Tier 3 |



CRITICAL NATURAL ENVIRONMENT MAP

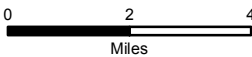
State-Wide Index Map



Current map location highlighted in red

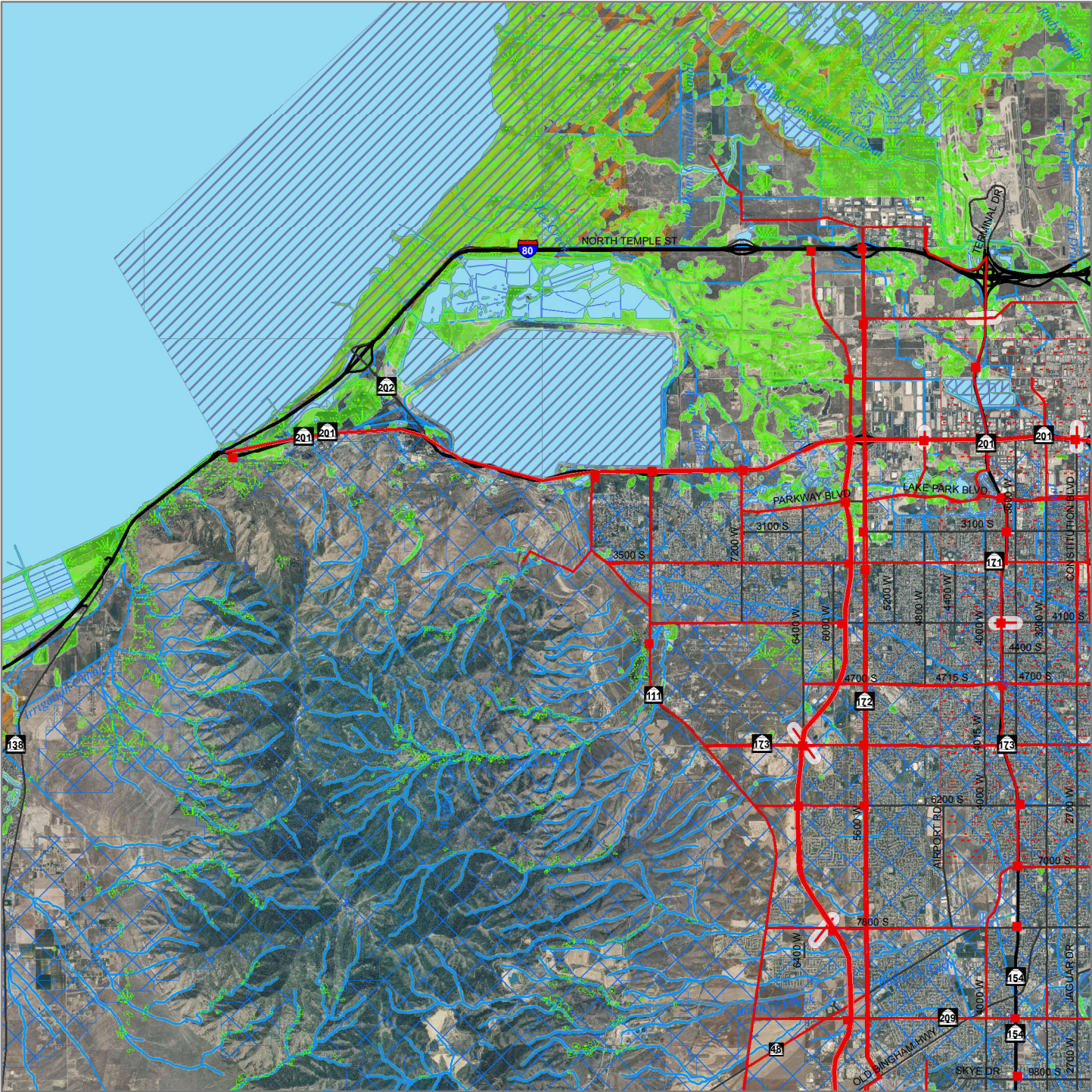


1:200,000



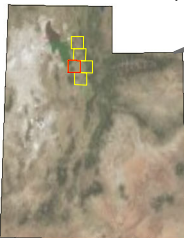
LEGEND

- | | | |
|-----------------------|-----------------------------------|------------------------|
| Interstate Highway | Ecological Hotspots | Canal Buffers |
| US Highway | Rare Plants | Lake & Streams Buffers |
| State Road | Wetlands | Tier 1 |
| Project | Conservation and Mitigation Areas | Tier 2 |
| Potential Impact Area | Water Quality Buffers | Tier 3 |
| Impaired Waters | Floodplains | Wetlands Buffer Tier 1 |
| Streams & Canals | | Wetlands Buffer Tier 2 |
| Lakes | | Wetlands Buffer Tier 3 |



CRITICAL NATURAL ENVIRONMENT MAP

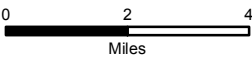
State-Wide Index Map



Current map location highlighted in red

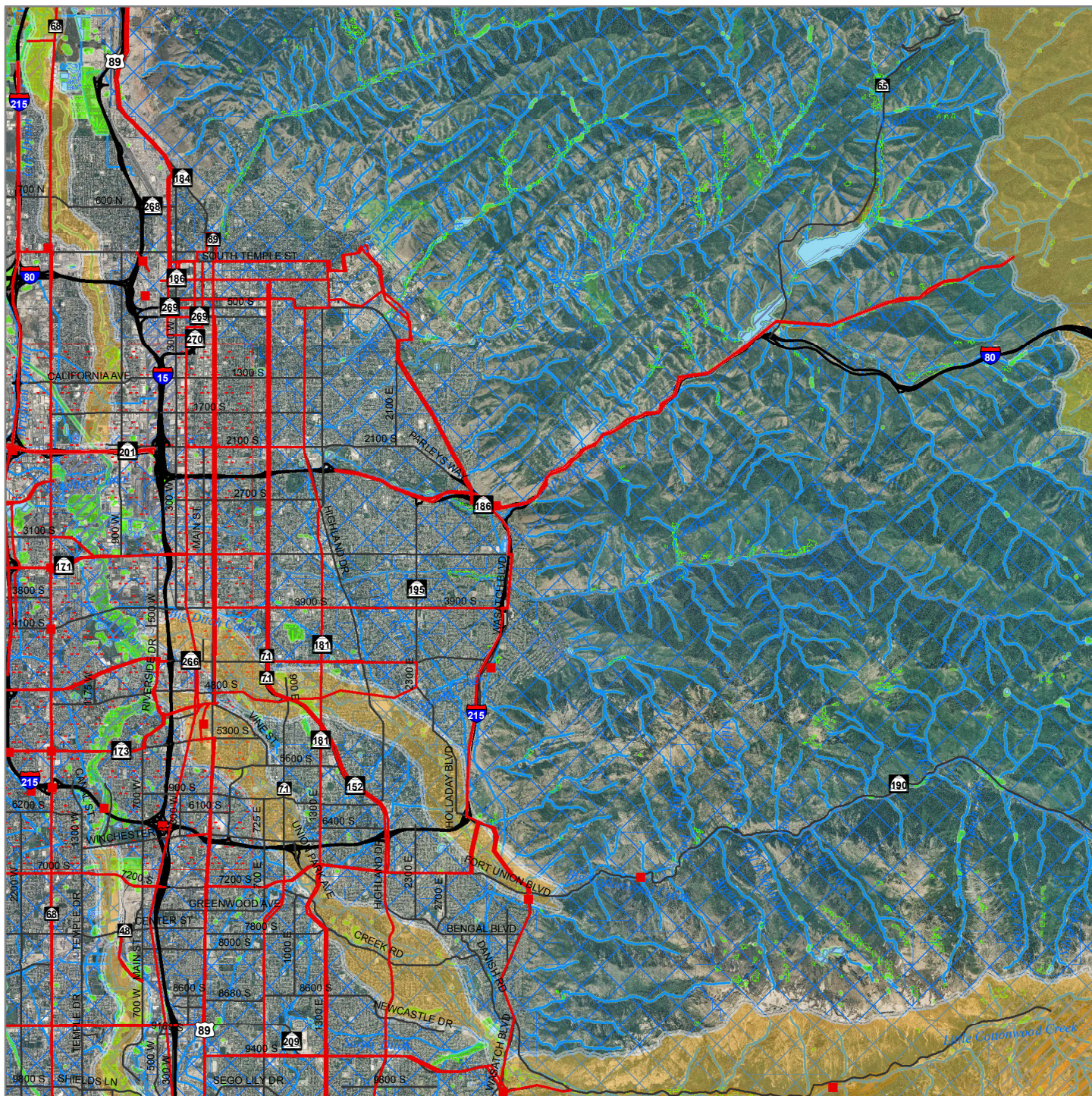


1:200,000

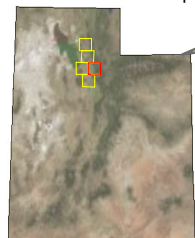
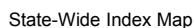


LEGEND

- | | | |
|-----------------------|-----------------------------------|------------------------|
| Interstate Highway | Ecological Hotspots | Canal Buffers |
| US Highway | Rare Plants | Lake & Streams Buffers |
| State Road | Wetlands | Tier 1 |
| Project | Conservation and Mitigation Areas | Tier 2 |
| Potential Impact Area | Water Quality Buffers | Tier 3 |
| Impaired Waters | Floodplains | Wetlands Buffer Tier 1 |
| Streams & Canals | | Wetlands Buffer Tier 2 |
| Lakes | | Wetlands Buffer Tier 3 |



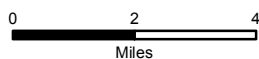
CRITICAL NATURAL ENVIRONMENT MAP

























Current map location highlighted in red

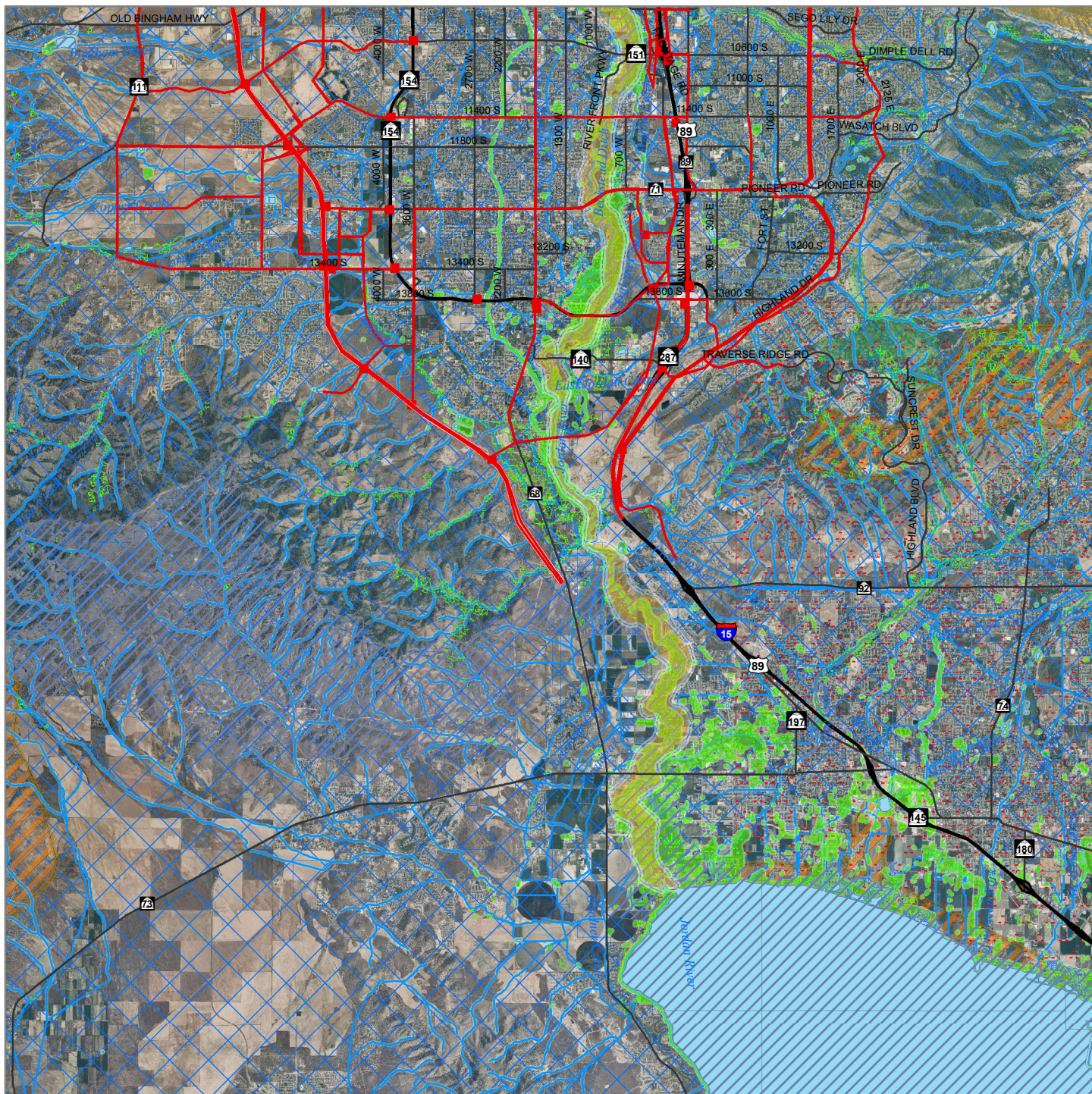


1:200,000

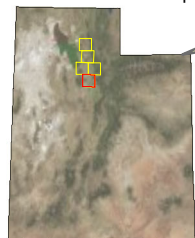
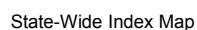


LEGEND

- | | | | | | |
|---|-----------------------|--|-----------------------------------|---|---------------|
|  | Interstate Highway |  | Ecological Hotspots |  | Canal Buffers |
|  | US Highway |  | Rare Plants | Lake & Streams Buffers | |
|  | State Road |  | Wetlands |  | Tier 1 |
|  | Project |  | Conservation and Mitigation Areas |  | Tier 2 |
|  | Potential Impact Area |  | Water Quality Buffers |  | Tier 3 |
|  | Impaired Waters |  | Wetlands Buffer |  | Tier 1 |
|  | Streams & Canals |  | Floodplains |  | Tier 2 |
|  | Lakes | | |  | Tier 3 |



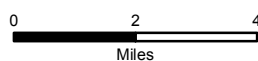
CRITICAL NATURAL ENVIRONMENT MAP


























Current map location highlighted in red

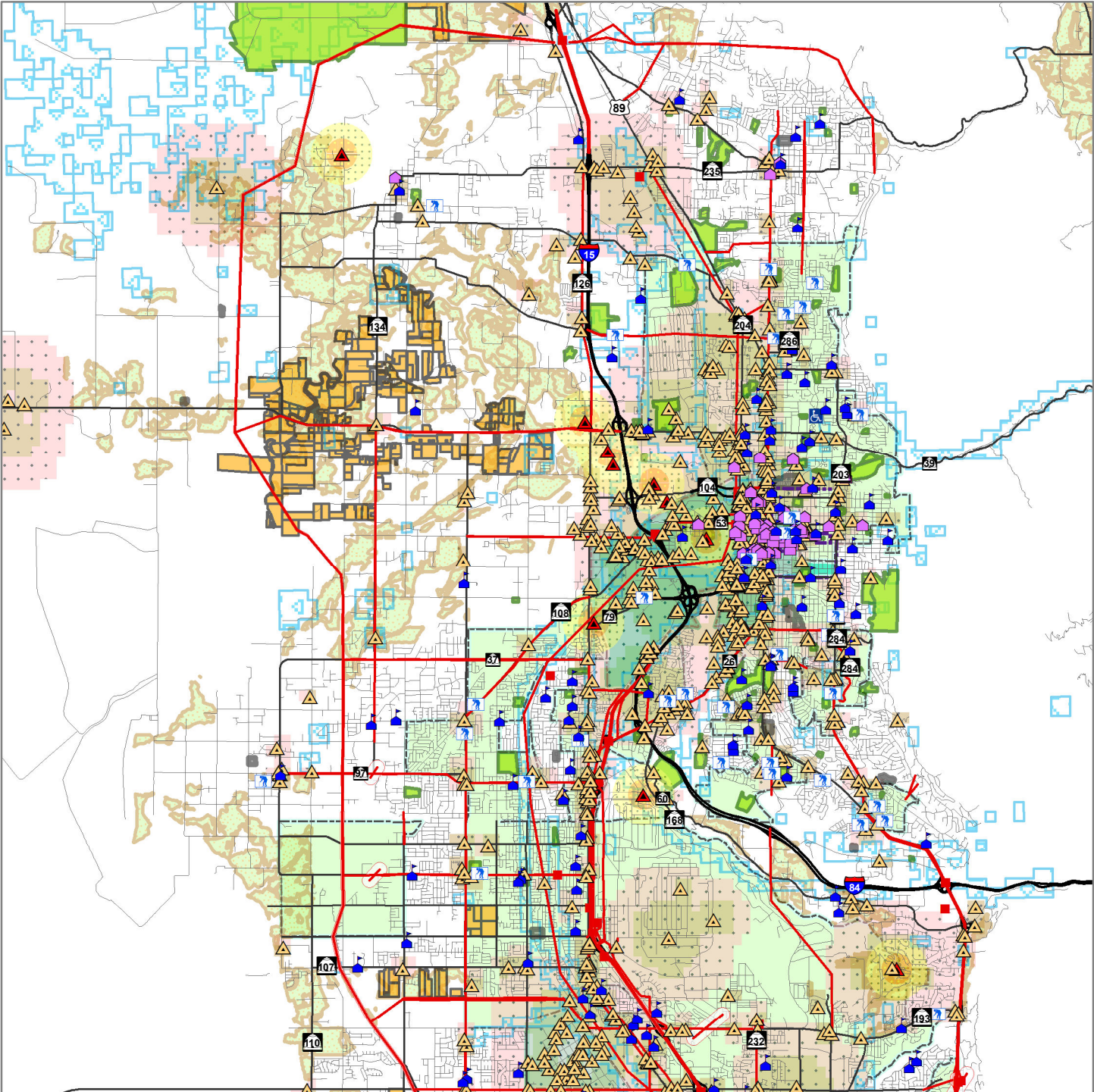


1:200,000



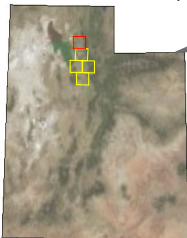
LEGEND

- | | | | | | |
|---|-----------------------|--|-----------------------------------|---|------------------------|
|  | Interstate Highway |  | Ecological Hotspots |  | Canal Buffers |
|  | US Highway |  | Rare Plants |  | Lake & Streams Buffers |
|  | State Road |  | Wetlands |  | Tier 1 |
|  | Project |  | Conservation and Mitigation Areas |  | Tier 2 |
|  | Potential Impact Area |  | Water Quality Buffers |  | Tier 3 |
|  | Impaired Waters |  | Floodplains |  | Wetlands Buffer |
|  | Streams & Canals | | |  | Tier 1 |
|  | Lakes | | |  | Tier 2 |
| | | | |  | Tier 3 |



CRITICAL BUILT ENVIRONMENT MAP

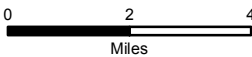
State-Wide Index Map



Current map location highlighted in red

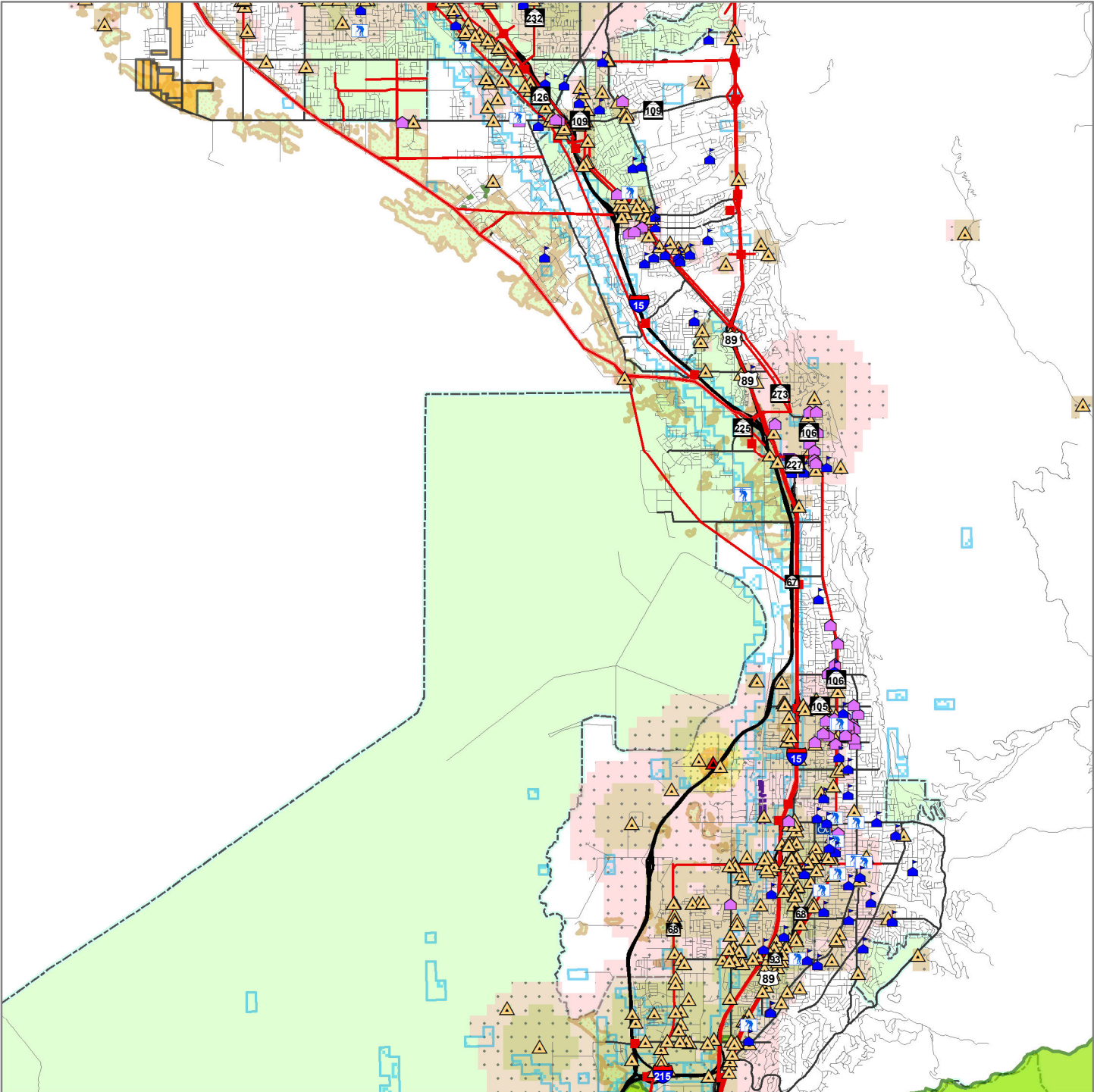


1:200,000



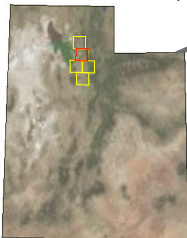
LEGEND

- | | | |
|-------------------------------|-----------------------|--------------------------------|
| Interstate Highway | Schools | Solid Waste Buffers |
| US Highway | Senior Facilities | Tier 2 |
| State Road | Disabled Facilities | Tier 3 |
| City Street | Historic Sites | Hazardous Waste Buffers |
| Project | Solid Waste Sites | Tier 1 |
| Potential Impact Area | Hazardous Waste Sites | Tier 2 |
| Historic Districts | Archeological Sites | Minority Block Groups |
| Agricultural Protection Areas | Parks | Tier 1 |
| Tribal Lands | Cemeteries | Tier 2 |
| Prime Farmland | | Tier 3 |



CRITICAL BUILT ENVIRONMENT MAP

State-Wide Index Map



Current map location highlighted in red

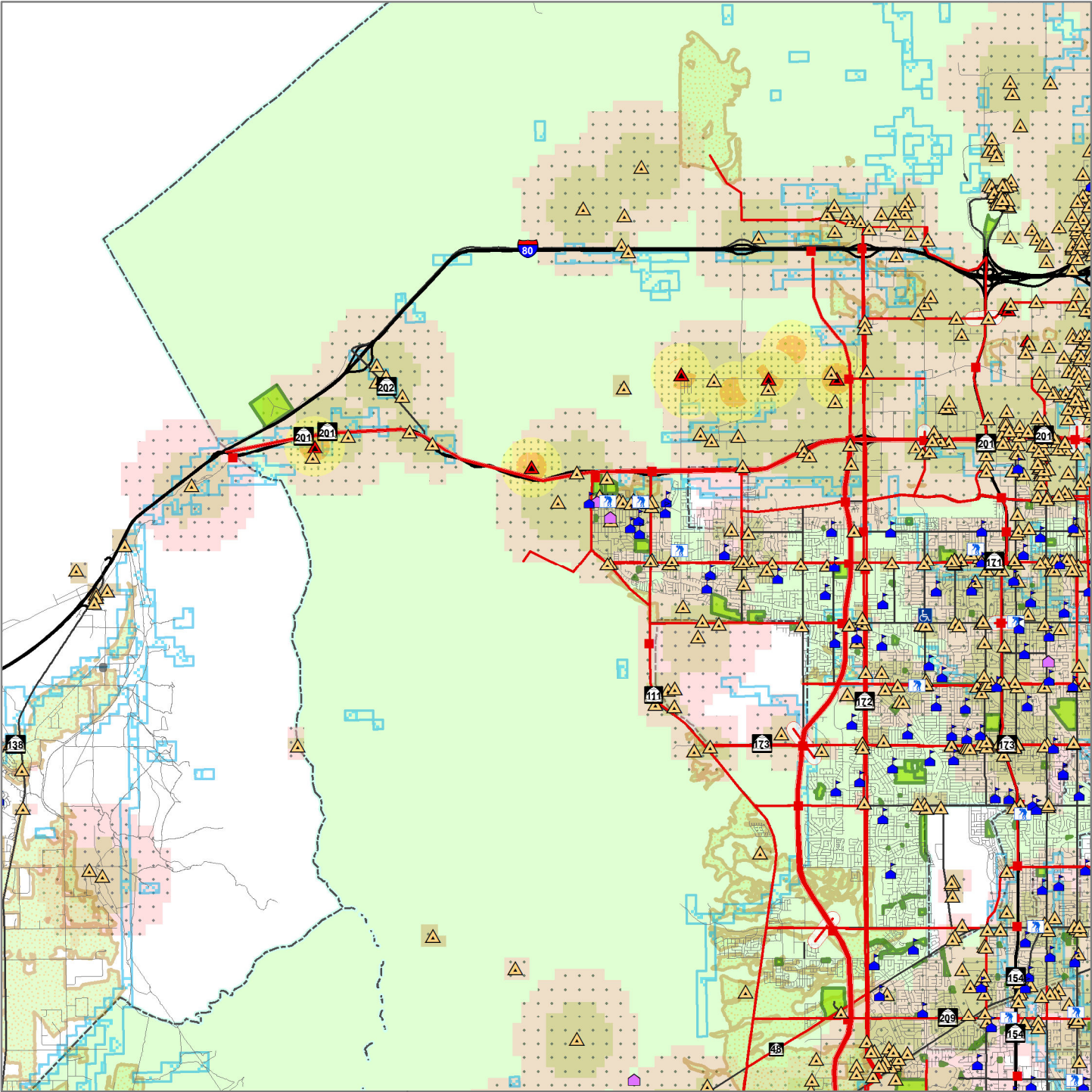
N

1:200,000

0 2 4
Miles

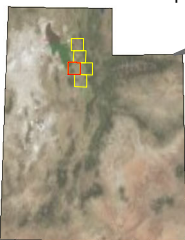
LEGEND

- | | | |
|-------------------------------|-----------------------|-----------------------------------|
| Interstate Highway | Schools | Solid Waste Buffers
Tier 2 |
| US Highway | Senior Facilities | Solid Waste Buffers
Tier 3 |
| State Road | Disabled Facilities | Hazardous Waste Buffers
Tier 1 |
| City Street | Historic Sites | Hazardous Waste Buffers
Tier 2 |
| Project | Solid Waste Sites | Minority Block Groups
Tier 1 |
| Potential Impact Area | Hazardous Waste Sites | Minority Block Groups
Tier 2 |
| Historic Districts | Archeological Sites | Minority Block Groups
Tier 3 |
| Agricultural Protection Areas | Parks | |
| Tribal Lands | Cemeteries | |
| Prime Farmland | | |



CRITICAL BUILT ENVIRONMENT MAP

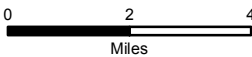
State-Wide Index Map



Current map location highlighted in red

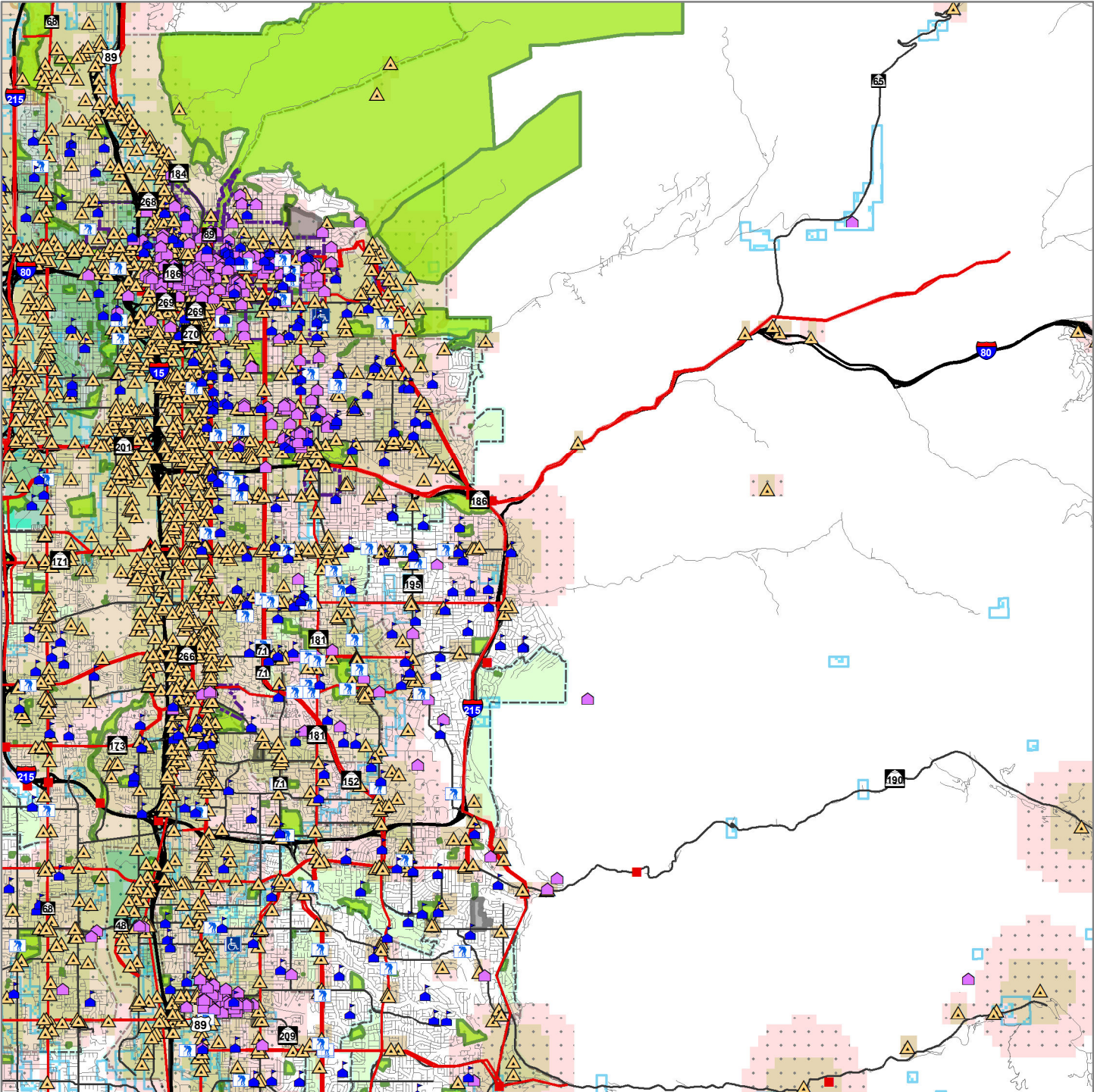


1:200,000



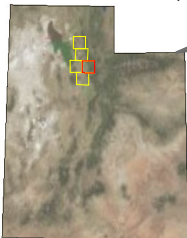
LEGEND

- | | | |
|-------------------------------|-----------------------|--------------------------------|
| Interstate Highway | Schools | Solid Waste Buffers |
| US Highway | Senior Facilities | Tier 2 |
| State Road | Disabled Facilities | Tier 3 |
| City Street | Historic Sites | Hazardous Waste Buffers |
| Project | Solid Waste Sites | Tier 1 |
| Potential Impact Area | Hazardous Waste Sites | Tier 2 |
| Historic Districts | Archeological Sites | Minority Block Groups |
| Agricultural Protection Areas | Parks | Tier 1 |
| Tribal Lands | Cemeteries | Tier 2 |
| Prime Farmland | | Tier 3 |



CRITICAL BUILT ENVIRONMENT MAP

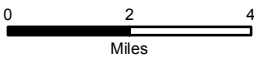
State-Wide Index Map



Current map location highlighted in red

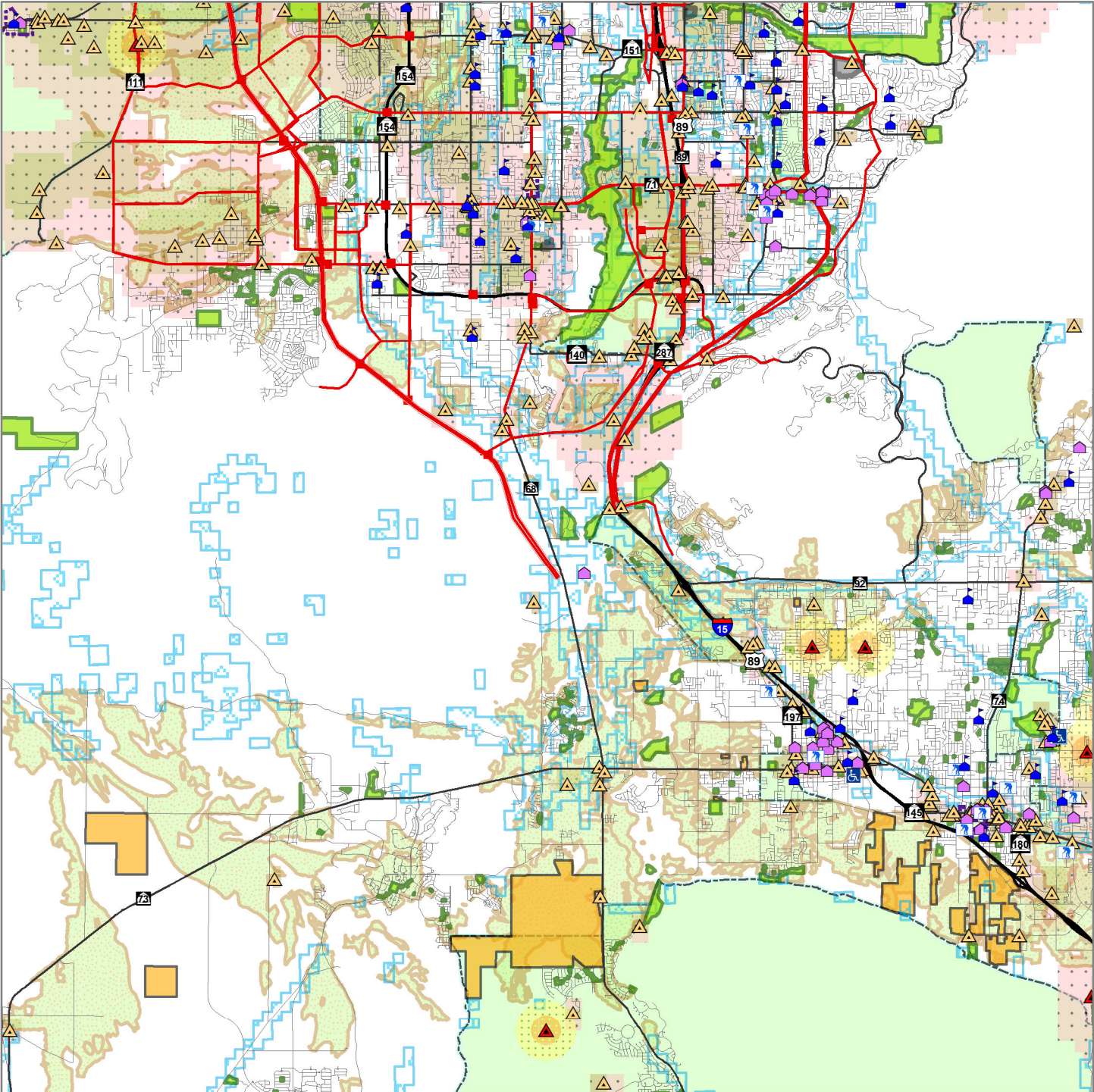


1:200,000



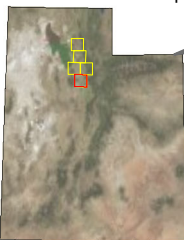
LEGEND

- | | | |
|-------------------------------|-----------------------|-----------------------------------|
| Interstate Highway | Schools | Solid Waste Buffers
Tier 2 |
| US Highway | Senior Facilities | Solid Waste Buffers
Tier 3 |
| State Road | Disabled Facilities | Hazardous Waste Buffers
Tier 1 |
| City Street | Historic Sites | Hazardous Waste Buffers
Tier 2 |
| Project | Solid Waste Sites | Minority Block Groups
Tier 1 |
| Potential Impact Area | Hazardous Waste Sites | Minority Block Groups
Tier 2 |
| Historic Districts | Archeological Sites | Minority Block Groups
Tier 3 |
| Agricultural Protection Areas | Parks | |
| Tribal Lands | Cemeteries | |
| Prime Farmland | | |



CRITICAL BUILT ENVIRONMENT MAP

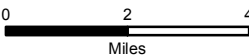
State-Wide Index Map



Current map location highlighted in red

N

1:200,000



LEGEND

- | | | |
|-------------------------------|-----------------------|--------------------------------|
| Interstate Highway | Schools | Solid Waste Buffers Tier 2 |
| US Highway | Senior Facilities | Solid Waste Buffers Tier 3 |
| State Road | Disabled Facilities | Hazardous Waste Buffers Tier 1 |
| City Street | Historic Sites | Hazardous Waste Buffers Tier 2 |
| Project | Solid Waste Sites | Minority Block Groups Tier 1 |
| Potential Impact Area | Hazardous Waste Sites | Minority Block Groups Tier 2 |
| Historic Districts | Archeological Sites | Minority Block Groups Tier 3 |
| Agricultural Protection Areas | Parks | |
| Tribal Lands | Cemeteries | |
| Prime Farmland | | |

WFRD DRAFT RTP

HYDROLOGY

WATERSHEDS

Watersheds Intersected:

First Salt Creek-Willard Bay Reservoir : 227.0 acres
 Second Salt Creek : 37.7 acres
 Little Weber Creek : 84.1 acres
 Fourmile Creek : 169.2 acres
 West Weber-Weber River : 96.3 acres
 Wheeler Creek-Ogden River : 11.9 acres
 Mill Creek : 22.0 acres
 Pineview Reservoir-South Branch South Fork Ogden River : 0.3 acres
 Outlet Weber River : 297.4 acres
 Corbett Creek-Weber River : 349.1 acres
 Howard Slough : 397.9 acres
 West Layton Marshes : 491.6 acres
 Kays Creek : 419.0 acres
 Holmes Creek : 461.9 acres
 Farmington Creek : 182.2 acres
 Holbrook Creek : 138.4 acres
 Outlet Jordan River : 552.4 acres
 Crystal Creek : 84.5 acres
 Big Dutch Hollow-East Canyon Creek : 3.3 acres
 Parleys Creek : 312.2 acres
 Little Valley Wash : 342.8 acres
 Red Butte Creek-Emmigration Creek : 126.8 acres
 Lee Creek : 966.3 acres
 Parleys Creek-Jordan River : 1,090.7 acres
 Outlet Mill Creek : 120.3 acres
 Coon Creek : 1.6 acres
 Outlet Big Cottonwood Creek : 230.8 acres
 Barneys Creek-Jordan River : 689.7 acres
 Outlet Little Cottonwood Creek : 84.0 acres
 Headwaters Barneys Creek : 78.0 acres
 Bingham Creek : 264.6 acres
 Dry Creek-Jordan River : 519.4 acres
 Headwaters Little Cottonwood Canyon : 12.1 acres
 Midas Creek : 414.0 acres
 Corner Canyon-Jordan River : 345.3 acres
 Butterfield Creek : 230.9 acres
 Rose Creek : 301.2 acres
 Wood Hollow-Jordan River : 319.6 acres
 Outlet Dry Creek-Jordan River : 6.9 acres

TOTAL: 10,483.4 acres

STREAMS

Streams: 117,751.0 feet
 Tier I: Stream and Buffer: 259.6 acres
 Tier II: Intermediate Buffer Zone: 165.9 acres
 Tier III: Outer Buffer Zone: 383.1 acres

TOTAL: 808.6 acres

CANALS

Tier I: Canal and Buffer: 298.3 acres

TOTAL: 298.3 acres

LAKES

Lakes: 115.5 acres
 Tier I: Lake and Buffer: 171.2 acres
 Tier II: Intermediate Buffer Zone: 43.2 acres
 Tier III: Outer Buffer Zone: 127.1 acres

TOTAL: 341.5 acres

WETLANDS

Wetlands: 281.5 acres
 Tier I: Wetland and Buffer: 759.2 acres
 Tier II: Intermediate Buffer Zone: 139.1 acres
 Tier III: Outer Buffer Zone: 376.8 acres

TOTAL: 1,275.0 acres

FLOODPLAINS

Tier I: 100-yr Floodplain: 488.1 acres

TOTAL: 488.1 acres

WATER QUALITY

Tier I: Source Protection Zone: 9,889.6 acres
 Tier II: Primary Recharge Zone: 2,996.6 acres
 Tier III: Secondary Recharge Zone: 3,627.8 acres

TOTAL: 16,513.9 acres

ECOLOGY

WILDLIFE ACTION AREAS

Wildlife Action Areas Intersected:

Great Salt Lake Shorelands

First Salt Creek-Willard Bay Reservoir: 227.0 acres
 Second Salt Creek: 37.7 acres
 Outlet Weber River: 297.5 acres
 Howard Slough: 397.9 acres
 West Layton Marshes: 491.6 acres
 Kays Creek: 419.0 acres
 Holmes Creek: 461.9 acres
 Farmington Creek: 182.2 acres
 Holbrook Creek: 138.4 acres
 Outlet Jordan River: 552.4 acres
 Crystal Creek: 84.5 acres
 Little Valley Wash: 342.8 acres

Lower Weber River

West Weber-Weber River: 96.3 acres
 Wheeler Creek-Ogden River: 11.9 acres
 Corbett Creek-Weber River: 349.1 acres

Wasatch Canyons

Parleys Creek: 312.2 acres

Red Butte Creek-Emmigration Creek: 126.8 acres

Headwaters Little Cottonwood Canyon: 12.1 acres

Jordan River

Dry Creek-Jordan River: 519.4 acres
 Corner Canyon-Jordan River: 345.3 acres
 Rose Creek: 301.2 acres
 Wood Hollow-Jordan River: 319.6 acres
 Outlet Dry Creek-Jordan River: 6.9 acres

ECOLOGICAL HOTSPOTS

Tier I: Federally Protected Species: 605.7 acres
 Tier II: State Protected Species: 599.8 acres
 Tier III: At-risk Wildlife Species: 605.8 acres

TOTAL: 1,811.3 acres

HIGH DIVERSITY WILDLIFE AREAS

Tier III: 596.2 acres

TOTAL: 596.2 acres

RARE PLANTS

Tier I: Protected Species Potential Habitat: 2,561.5 acres

TOTAL: 2,561.5 acres

GEOLOGY

ENGINEERING PROBLEM(S)

Tier I: Expansive, Gypsiferous, or Collapsible Soils & Rock: 2 engineering problem(s)

Tier III: Limestone, Peat, Piping, & Dunes: 2 engineering problem(s)

TOTAL: 4 engineering problem(s)

FAULT LINE(S)

Tier I: Normal and Surface Rupture: 12 fault line(s)

TOTAL: 12 fault line(s)

LANDSLIDE

Tier I: Deep-seated: 38.7 acres

Tier II: Shallow: 2.1 acres

Tier III: Lateral Spread: 317.4 acres

TOTAL: 358.2 acres

Landslide Intersected: Deep Seated Landslides, Lateral Spreads, Shallow Landslides

LIQUEFACTION POTENTIAL

Tier I: High and High to Moderate: 4,176.8 acres

Tier II: Moderate and Low to Moderate: 2,159.0 acres

Tier III: Low and Very Low to Low: 3,835.4 acres

TOTAL: 10,171.2 acres

Liquefaction Potential Intersected: High, Very Low, Moderate to High, Low to Moderate, Moderate, Low

SLOPE

Tier I: >30%: 336.5 acres

Tier II: 25-30%: [276.8 acres](#)

Tier III: 15-25%: [352.2 acres](#)

TOTAL: 965.4 acres

ENVIRONMENTAL HAZARDS

IMPAIRED WATERS

Tier III: Proximity: [222.2 acres](#)

TOTAL: 222.2 acres

Impaired Waters Intersected: [East Canyon Creek-2](#), [Little Cottonwood Creek-2](#), [Jordan River-5](#), [Jordan River-6](#), [Little Cottonwood Creek-1](#), [Big Cottonwood Creek-1](#), [Jordan River-1](#), [Jordan River-2](#), [Jordan River-7](#)

HAZARDOUS WASTE SITES

Tier I: Immediate Proximity: [5,046.0 acres](#)

Tier II: Secondary Buffer Zone: [12,056.1 acres](#)

TOTAL: 17,102.0 acres

Hazardous Waste Sites Intersected: [11 Brownfield](#), [400 CERCLIS](#), [69 Large Quantity Generator](#), [1592 LUST Tank](#), [17 National Priority List](#), [27 Toxic Release](#), [3 UPDES](#), [613 UST Facility](#)

SOLID WASTE SITES

Tier II: Immediate Proximity: [49.0 acres](#)

Tier III: Secondary Buffer Zone: [91.1 acres](#)

TOTAL: 140.0 acres

Solid Waste Sites Intersected: [2 Transfer Station](#), [14 Landfill](#)

OPEN SPACE

AGRICULTURAL PROTECTION AREAS

Tier I: Protected Land Use: [45.8 acres](#)

TOTAL: 45.8 acres

OPEN SPACE

Tier I: Section 4(f) Implications: [6,339.8 acres](#)

TOTAL: 6,339.8 acres

PARKS

Tier I: Section 4(f) Implications: [143.1 acres](#)

TOTAL: 143.1 acres

Parks Intersected: [Shepard Lane Park](#), [Camelot Park](#), [Park, Galena Hills Park](#), [Galena Hills Park \(East\)](#), [Jordan River Rotary Park](#), [Western Springs Mini Park](#), [Peggy Green Park](#), [Alta Canyon Park](#), [Geologic View Park](#), [Brandon Park](#), [Amphitheater](#), [Amphitheater Expansion](#), [Cemetery Shops](#), [Dimple Dell Regional Park](#), [Jordan River Parkway](#), [CONSTITUTION PARK](#), [JORDAN RIVER PKWY](#), [BARNEY CREEK PARK](#), [RON WOOD MEMORIAL PARK](#), [WEST VIEW PARK](#), [SUGAR PLUM PARK](#), [TANNER PARK](#), [FALCONCREST PARK](#), [SOUTH JORDAN REC CENTER](#), [WELBY PARK](#), [ROSECREEK PARK](#), [ARROWHEAD PARK](#), [SCOTTSDALE](#), [SOUTHFORK PARK](#), [USANA AMPHITHEATER FIX](#), [GERMANIA PARK](#), [ACCORD ICE ARENA & CENTENNIAL POOL](#), [BROOKFIELD PARK](#), [OXBOW Park](#), [RESEARCH PARK TENNIS](#), [MAGNA-COPPER PARK](#), [DECKER LAKE PARK](#), [REDWOOD MULTIPURPOSE CENTER](#), [BIG COTTONWOOD REGIONAL PARK](#), [WELCKER](#)

[MEMORIAL PARK](#), [HERMAN FRANKS PARK](#), [WESTERN SPRINGS PARK](#), [JORDAN RIVER PARKWAY](#), [LYNN BALLARD BALL PARK](#), [ANDY BALLARD EQUESTRIAL CENTER](#), [WEST JORDAN BICENTENNIAL PARK](#), [Roy Park](#), [Fort Buenaventura](#), [West Ogden](#), [HILLCREST PARK](#), [SUGARHOUSE PARK](#), [CITY CREEK PARK](#), [NORTH GATE WAY PARK](#), [WESTPOINTE PARK](#), [BRIGHAM YOUNG HISTORIC PARK](#), [SKYE PARK](#), [9400 S ENTRY PARK](#), [SUNSTONE DETENTION](#), [SOUTH JORDAN CITY PARK](#), [Cherry Hill Camping Resort](#), [Fisher Park](#), [Kiwanis Park](#), [Nichols Park](#), [Sunset Park](#), [Lagoon RV Park](#), [Hunter Park](#), [Parkway Park](#), [West Valley City Park](#)

CEMETERIES

Tier I: Protected Site: [1.5 acres](#)

TOTAL: 1.5 acres

Cemeteries Intersected: [Sandy Cemetery](#), [Larkin Sunset Gardens Cemetery](#), [Wights Fort Cemetery](#)

PRIME FARMLAND

Tier I: Prime Farmland: [85.1 acres](#)

Tier II: Prime Farmland with 1 Condition: [735.6 acres](#)

Tier III: Prime Farmland with 2 Conditions: [132.3 acres](#)

TOTAL: 953.0 acres

CONSERVATION & MITIGATION

Tier I: Protected Land Use: [88.6 acres](#)

TOTAL: 88.6 acres

[see comments](#)

[UDOT Wetland Mitigation: 0.1 acres](#)

The Nature Conservancy

[Brezoff: 0.1 acres](#)

[Webster \(1\): 4.9 acres](#)

[Lowe/Foulger: 7.2 acres](#)

[Flint 2: 9.0 acres](#)

[Hill 4 \(1\): 11.7 acres](#)

[Hill 1 \(3\): 7.4 acres](#)

[Call: 9.8 acres](#)

[USA - Alstrohm2/Evans: 6.6 acres](#)

[Wiser: 4.6 acres](#)

[C. Limited Partnership: 9.1 acres](#)

[Webster \(2\): 11.6 acres](#)

[Caldwell: 1.8 acres](#)

[Bankhead 2: 4.6 acres](#)

LAND USE

LAND USE

Land Use Intersected:

[Agriculture : 2,556.3 acres](#)

[Commercial/Industrial : 2,018.2 acres](#)

[Residential : 2,603.6 acres](#)

TOTAL: 7,178.1 acres

LAND DEVELOPMENT

Land Development Intersected:

[Developed, Open Space - Low Intensity : 3,784.5 acres](#)

[Developed, Medium - High Intensity : 7,334.8 acres](#)

TOTAL: 11,119.3 acres

PRIVATE/PUBLIC OWNERSHIP

Private/Public Ownership Intersected:

Federal

[BLM: 1.1 acres](#)

[DOD: 135.6 acres](#)

[USFS: 61.7 acres](#)

Private

[Private: 10,233.6 acres](#)

State

[UDWR: 15.0 acres](#)

[USP: 36.1 acres](#)

[UDOT: 0.4 acres](#)

ZONING

Zoning Intersected:

Box Elder County

[Commercial: 15.6 acres](#)

[Low Density: 3.0 acres](#)

[Agriculture/Very Low Density: 67.7 acres](#)

[Mixed Use/TOD: 12.6 acres](#)

[Unknown: 0.0 acres](#)

Davis County

[Agriculture/Rural Residential: 726.8 acres](#)

[Low Density: 480.5 acres](#)

[Open Space: 17.4 acres](#)

[Commercial: 373.3 acres](#)

[Medium Density: 147.9 acres](#)

[High Density: 9.2 acres](#)

[Unknown: 172.2 acres](#)

[Industrial/Manufacturing/Extractive: 91.1 acres](#)

[Institutional: 0.1 acres](#)

[Mixed Use/TOD: 33.3 acres](#)

[Office: 31.1 acres](#)

[Historical Overlay: 0.1 acres](#)

[Architectural/Urban Planning Overlay: 5.7 acres](#)

[Airport: 0.1 acres](#)

[Federal Land: 2.4 acres](#)

Salt Lake County

[Institutional: 95.8 acres](#)

[Office: 109.7 acres](#)

[Commercial: 813.0 acres](#)

[Low Density: 876.1 acres](#)

[Medium Density: 539.8 acres](#)

[Agriculture/Rural Residential: 428.3 acres](#)

[Mixed Use/TOD: 511.4 acres](#)

[PUD: 26.6 acres](#)

[Industrial/Manufacturing/Extractive: 979.3 acres](#)

[Agriculture/Very Low Density: 191.0 acres](#)

[Historical Overlay: 1.1 acres](#)

[Sensitive and Protection Areas: 235.5 acres](#)

[Open Space: 117.0 acres](#)

[Mixed Use: 26.3 acres](#)

[High Density: 2.7 acres](#)

[Unknown: 0.2 acres](#)

Public Utilities: 19.9 acres

Summit County

Sensitive and Protection Areas: 3.2 acres

Tooele County

Industrial/Manufacturing/Extractive: 8.4 acres

Unknown: 8.4 acres

Utah County

Industrial/Manufacturing/Extractive: 13.4 acres

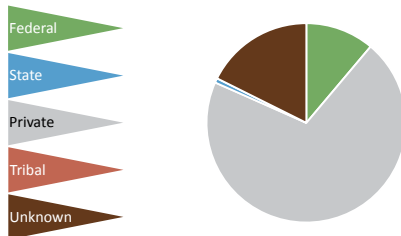
Agriculture/Rural Residential: 4.5 acres

PARCELS

ROW Acreage: 10483.4 acres

Parcel Acreage: 7216.7 acres

Number of Parcels: 22007



CULTURAL RESOURCES

ARCHEOLOGICAL SITES

Tier I: Section 106 Implications: 73.8 acres

TOTAL: 73.8 acres

HISTORIC DISTRICTS

Tier III: Historic Zone: 78.3 acres

TOTAL: 78.3 acres

Historic Districts Intersected: Salt Lake City Warehouse Historic District, Fort Douglas Historic District, University Neighborhood Historic District, Avenues Historic District, Murray Downtown Residential Historic District, South Temple Historic District, City Creek Historic District, Riverton Historic District, Salt Lake City East Side Historic District, Central City Historic District, Central City Historic District Boundary Increase 2001 (Bryant Neighborhood), Capitol Hill Historic District (Boundary Increase), Capitol Hill Historic District

HISTORIC SITES

Tier I: Section 106 Implications: 16.4 acres

TOTAL: 16.4 acres

Historic Sites Intersected: Smith, Lauritz, House, Ogden/Weber Municipal Building, Jordan School District Administration Building, Council Hall, Browning Apartments, Arbuckle, George, House, Cannon, George M., House, Cathedral of the Madeleine, Henderson Block, Eccles Building, New Brigham Hotel, Peery's Egyptian Theatre, Kahn, Emanuel, House, Scowcroft Warehouse, Ladies Literary Club Clubhouse, McCune, Alfred W., Mansion, Lyne, Walter C., House, Japanese Church of Christ, Pugh, Edward, House, Stevens, Sidney, House, Devereaux House, Kearns, Thomas, Mansion and Carriage House, Mountain View Auto Court, Bigelow--Ben Lomond Hotel, Draper--Steadman House, Keith, David, Mansion and Carriage House, Warenski--Duvall Comerical

Building and Apartments, Crescent Elementary School, Murray LDS Second Ward Meetinghouse, Iris Theater, Apartments and Commercial Building, Fitzgerald, Perry and Agnes Wadsworth, House, Mickelsen, Joseph E. and Mina W., House, Anderberg, Thomas and Beda, House, Landenberger, John C. and Mary, House, Butler--Wallin House, Smith, Thomas J. and Amanda N., House

PEDESTRIAN

BIKE ROUTES

TOTAL: 1,262,821.8 feet

BUS ROUTES

99 Intersections

BUS STOPS

2,937 Intersections

COMMUTER RAIL ROUTES

TOTAL: 22,669.0 feet

COMMUTER RAIL STOPS

8 Intersections

LIGHT RAIL ROUTES

Light Rail Routes Intersected:

Main North-South Line : 2,202.8 feet

University Line : 132.0 feet

TOTAL: 2,334.8 feet

LIGHT RAIL STATIONS

28 Intersections

CHILDREN

SCHOOL(S)

Tier I: Immediate Proximity: 476 school(s)

TOTAL: 476 school(s)

CONCENTRATION OF CHILDREN

Tier II: 30%-60% > County: 52 block group(s)

Tier III: 10%-30% > County: 128 block group(s)

TOTAL: 180 block group(s)

Scenario Average: 30.46%

Box Elder County: 36.06%

Davis County: 35.15%

Salt Lake County: 30.32%

Summit County: 29.77%

Tooele County: 35.10%

Utah County: 33.97%

Weber County: 30.92%

POPULATION CHARACTERISTICS

POPULATION DENSITY

Scenario Average: 416,587.2/mi²

Box Elder County: 747.0/mi²

Davis County: 78,493.0/mi²

Salt Lake County: 121,835.0/mi²

Summit County: 1,589.0/mi²

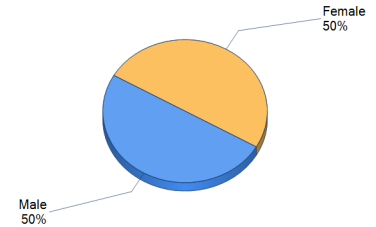
Tooele County: 588.0/mi²

Utah County: 18,442.0/mi²

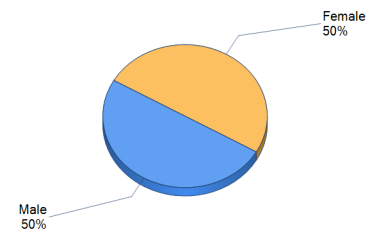
Weber County: 34,148.0/mi²

SEX RATIO

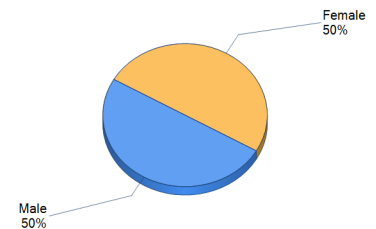
Scenario Averages:



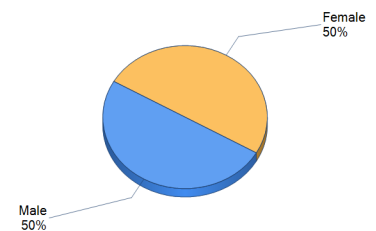
Box Elder County:



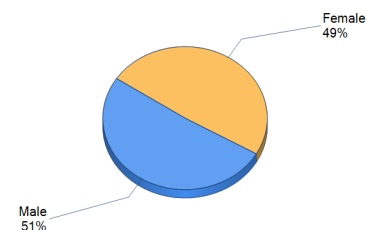
Davis County:



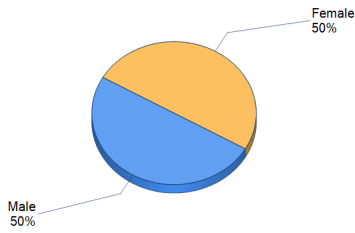
Salt Lake County:



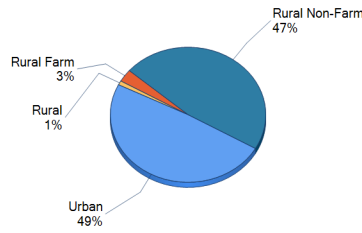
Summit County:



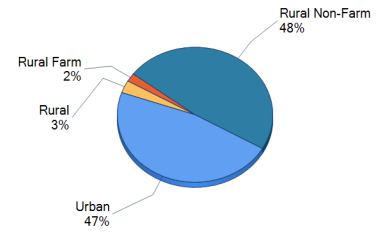
Tooele County:



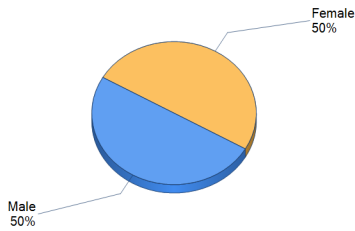
Davis County:



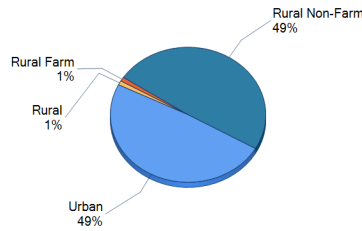
Weber County:



Utah County:



Salt Lake County:



MEDIAN FAMILY INCOME

Scenario Average: \$55,474

Box Elder County: \$49,421

Davis County: \$58,329

Salt Lake County: \$54,470

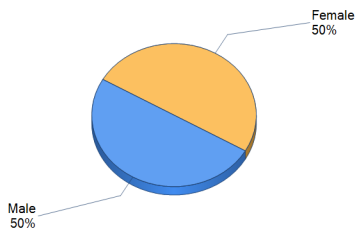
Summit County: \$72,510

Tooele County: \$50,438

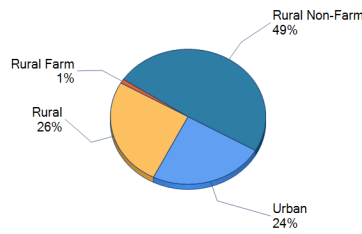
Utah County: \$50,196

Weber County: \$49,724

Weber County:

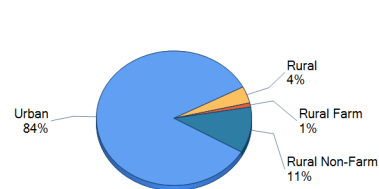


Summit County:

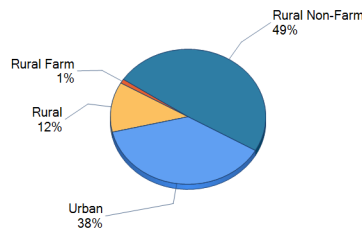


URBAN / RURAL

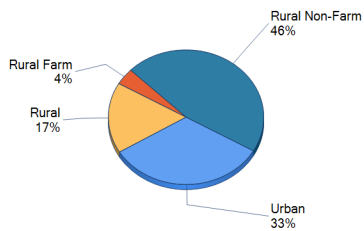
Scenario Averages:



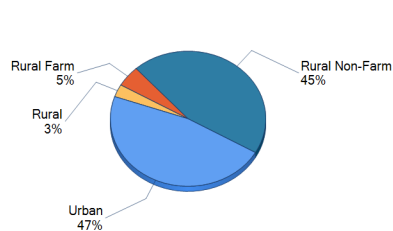
Tooele County:



Box Elder County:

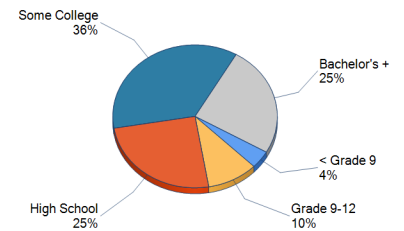


Utah County:

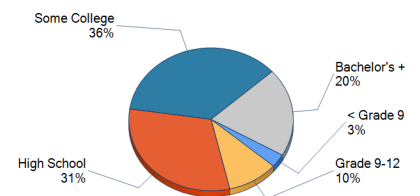


EDUCATION

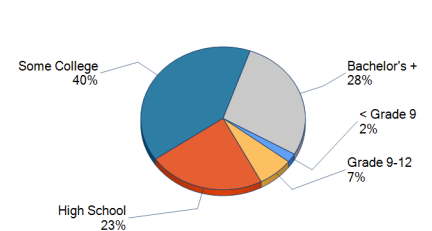
Scenario Averages:



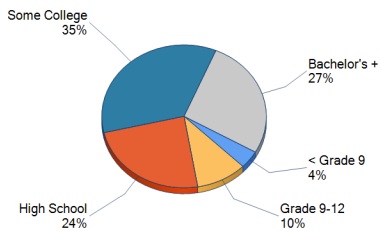
Box Elder County:



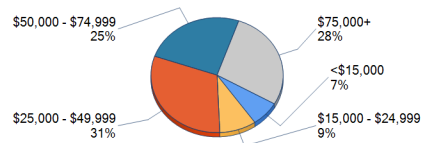
Davis County:



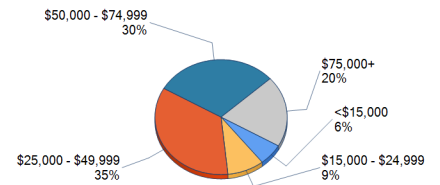
Salt Lake County:



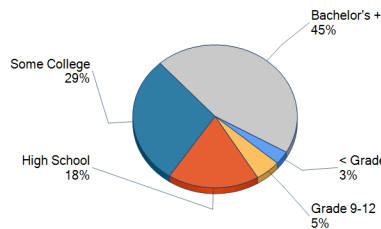
Scenario Averages:



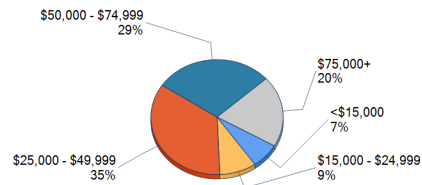
Tooele County:



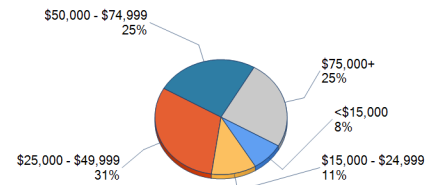
Summit County:



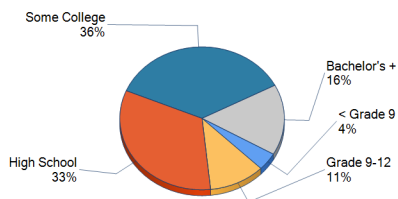
Box Elder County:



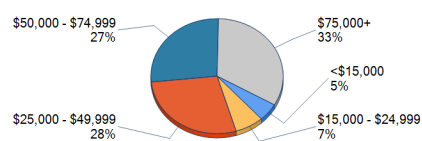
Utah County:



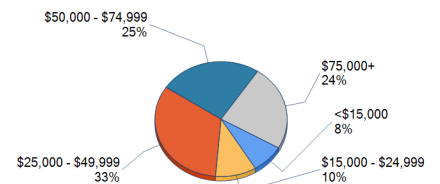
Tooele County:



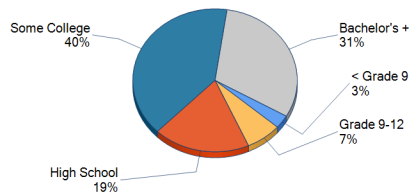
Davis County:



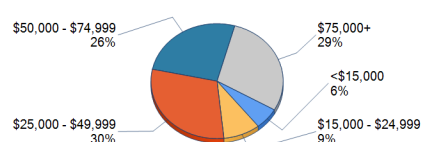
Weber County:



Utah County:

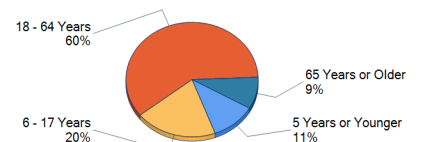


Salt Lake County:

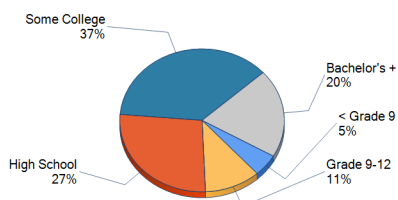


AGE DISTRIBUTION

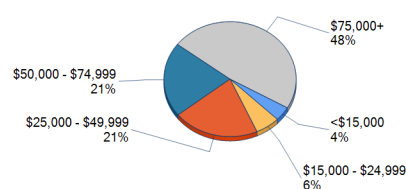
Scenario Averages:



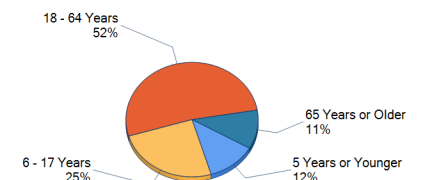
Weber County:



Summit County:

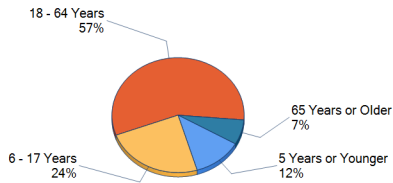


Box Elder County:

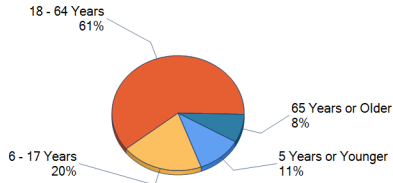


FAMILY INCOME DISTRIBUTION

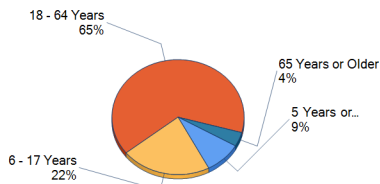
Davis County:



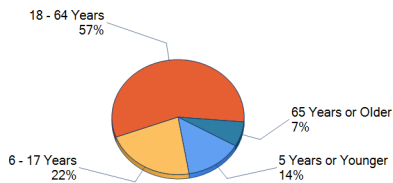
Salt Lake County:



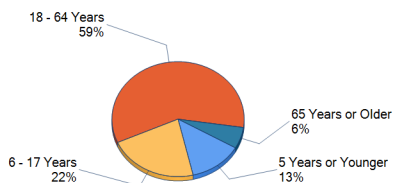
Summit County:



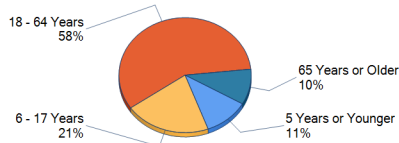
Tooele County:



Utah County:



Weber County:



HOUSING CHARACTERISTICS

HOUSING DENSITY

Scenario Average: **241.1/acre**

Box Elder County: **0.4/acre**

Davis County: **38.0/acre**

Salt Lake County: **65.9/acre**

Summit County: **1.5/acre**

Tooele County: **0.3/acre**

Utah County: **8.2/acre**

Weber County: **19.1/acre**

AVERAGE HOUSEHOLD SIZE OF OCCUPIED UNITS

Scenario Average: **3.1**

Box Elder County: **3.2**

Davis County: **3.3**

Salt Lake County: **3.0**

Summit County: **2.9**

Tooele County: **3.1**

Utah County: **3.6**

Weber County: **2.9**

AVERAGE HOUSEHOLD SIZE OF OWNER-OCCUPIED UNITS

Scenario Average: **3.2**

Box Elder County: **3.3**

Davis County: **3.5**

Salt Lake County: **3.2**

Summit County: **2.9**

Tooele County: **3.2**

Utah County: **3.8**

Weber County: **3.1**

AVERAGE HOUSEHOLD SIZE OF RENTER-OCCUPIED UNITS

Scenario Average: **2.8**

Box Elder County: **2.8**

Davis County: **2.7**

Salt Lake County: **2.4**

Summit County: **2.8**

Tooele County: **2.7**

Utah County: **3.1**

Weber County: **2.6**

OCCUPIED HOUSING UNITS WITH NO VEHICLE AVAILABLE

Scenario Average: **0.05%**

Box Elder County: **0.04%**

Davis County: **0.03%**

Salt Lake County: **0.06%**

Summit County: **0.03%**

Tooele County: **0.04%**

Utah County: **0.03%**

Weber County: **0.06%**

MEAN VEHICLES AVAILABLE PER HOUSING UNIT

Scenario Average: **2.0**

Box Elder County: **2.2**

Davis County: **2.2**

Salt Lake County: **1.9**

Summit County: **2.1**

Tooele County: **2.1**

Utah County: **2.2**

Weber County: **1.9**

MINORITIES

RACE / ETHNICITY CONCENTRATION

Tier I: Polarized Enclave or Ghetto: **12** block group(s)

Tier II: Assimilation-Pluralism Enclave or Mixed Minority

Enclave: **7** block group(s)

Tier III: Isolated or Non-Isolated Host Community: **279** block group(s)

TOTAL: 298 block group(s)

Scenario Average: **16.48%**

Box Elder County: **9.03%**

Davis County: **10.29%**

Salt Lake County: **19.08%**

Summit County: **10.50%**

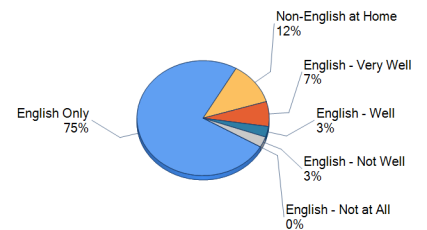
Tooele County: **14.89%**

Utah County: **10.66%**

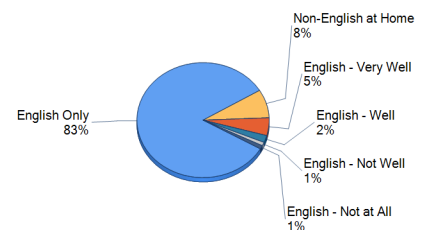
Weber County: **17.26%**

LANGUAGE ABILITIES

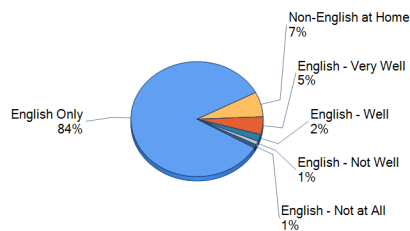
Scenario Averages:



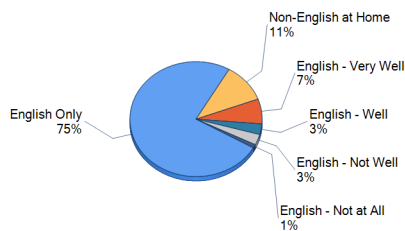
Box Elder County:



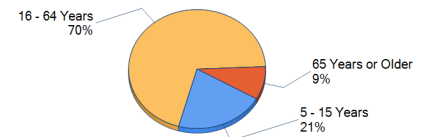
Davis County:



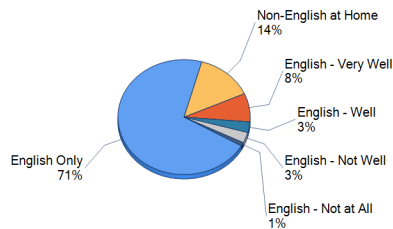
Weber County:



Scenario Averages:



Salt Lake County:



LOW INCOME CONCENTRATION OF POVERTY

Tier I: Poverty >40%: **6** block group(s)
 Tier II: Poverty 20-40%: **34** block group(s)
 Tier III: Poverty 10-20%: **88** block group(s)
TOTAL: 128 block group(s)

Scenario Average: **7.87%**

Box Elder County: **7.12%**

Davis County: **5.07%**

Salt Lake County: **8.00%**

Summit County: **5.43%**

Tooele County: **6.66%**

Utah County: **12.00%**

Weber County: **9.30%**

HOUSEHOLDS ON PUBLIC ASSISTANCE

Scenario Average: **3.16%**

Box Elder County: **2.66%**

Davis County: **2.90%**

Salt Lake County: **2.97%**

Summit County: **1.43%**

Tooele County: **2.96%**

Utah County: **2.43%**

Weber County: **3.77%**

DISABLED POPULATIONS CONCENTRATION OF PERSONS WITH A DISABILITY

Tier I: 60% > County: **63** block group(s)

Tier II: 30-60% > County: **65** block group(s)

Tier III: 10-30% > County: **62** block group(s)

TOTAL: 190 block group(s)

Scenario Average: **16.25%**

Box Elder County: **15.27%**

Davis County: **12.77%**

Salt Lake County: **16.22%**

Summit County: **8.66%**

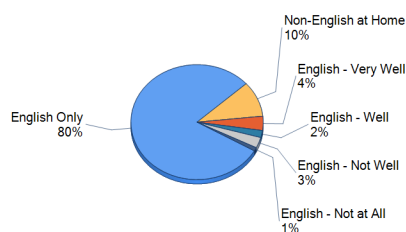
Tooele County: **14.90%**

Utah County: **11.75%**

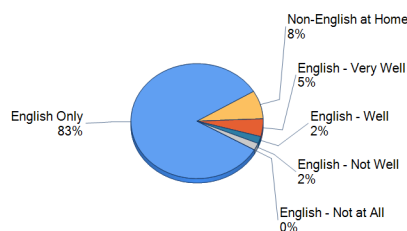
Weber County: **16.71%**

DISABLED BY AGE GROUP

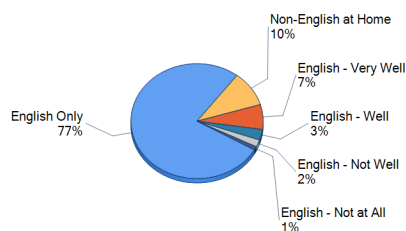
Summit County:



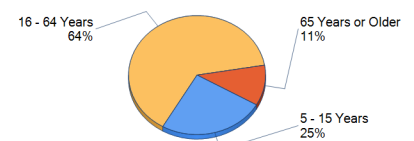
Tooele County:



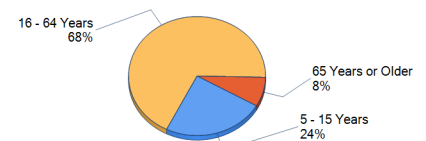
Utah County:



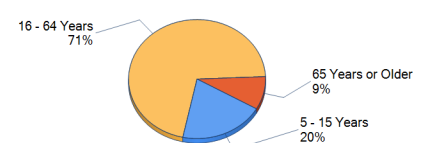
Box Elder County:



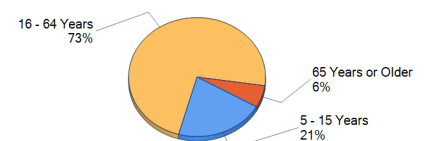
Davis County:



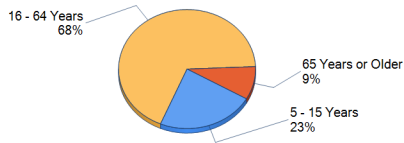
Salt Lake County:



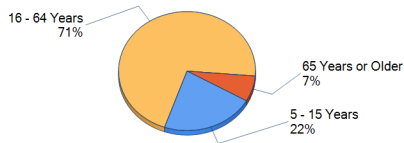
Summit County:



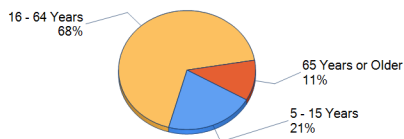
Tooele County:



Utah County:



Weber County:



DISABILITY FACILITY(S)

Tier I: Immediate Proximity: 3 disability facility(s)

TOTAL: 3 disability facility(s)

Disability Facility(s) Intersected: REM Utah, Inc., Mission Health Services, Colombus Community Center

SENIORS CONCENTRATION OF SENIORS

Scenario Average: 8.74%

Box Elder County: 10.36%

Davis County: 7.35%

Salt Lake County: 8.07%

Summit County: 4.89%

Tooele County: 7.49%

Utah County: 6.44%

Weber County: 10.40%

SENIORS WITHOUT A VEHICLE

Tier III: 10-30%: 5 block group(s)

TOTAL: 5 block group(s)

Scenario Average: 1.21%

Box Elder County: 1.49%

Davis County: 0.75%

Salt Lake County: 1.60%

Summit County: 0.61%

Tooele County: 1.27%

Utah County: 0.93%

Weber County: 1.68%

SENIORS CARE FACILITY(S)

Tier I: Immediate Proximity: 73 seniors care facility(s)

TOTAL: 73 seniors care facility(s)

Seniors Care Facility(s) Intersected: Arlington Hills Care Center LLC, Avalon Valley Rehabilitation Center, Brighton Gardens of Salt Lake City Nursing, Evergreen Canyons Health and Rehabilitation, Federal Heights Rehabilitation and Nursing, Friendship Villa Care Center, Garden Terrace Alzheimer's Center of Excell, Hazen Nursing Home, HealthSouth Transitional Care Unit, Heritage Bennion Care Center, Highland Cove Health Care Center, Life Care Center of Bountiful, McKay-Dee Transitional Care Center, Mountain View Health Services, Ogden Regional Medical Center TCU, Pine View Transitional Rehab, Rocky Mountain Care - West Valley, Sandy Regional Health Center, South Valley Health Center, St. Mark's Hospital Transitional Care, Trinity Mission Health and Rehab of Roy, LP, Utah State Veterans Nursing Home, Washington Terrace Health Services, Woodland Park Care Center, Beehive Homes of Magna, Beehive Homes of West Jordan Inc. #2, Beehive Homes of West Jordan, Inc., Cottonwood Creek Retirement, Elderly Manor Assisted Living, Golden Living Center, Green Gables, Inc., Heather Ridge Home of Midvale, Hennefer's Home for the Elderly, Heritage Place Assisted Living, Highland Cove Retirement, Holladay Home for the Elderly, Mayberry Homes of Roy, Millcreek Retirement Residence, Niitsuma Living Center, Tri-City Beehive Homes of East Sandy, Tri-City Beehive Homes of West Sandy, Alta Ridge Assisted Living, Brighton Gardens of Salt Lake City Assisted, Heritage Place Level II, Legacy House Assisted Living, Legacy House of Taylorsville, Mountain Ridge, PeachTree Place of West Haven, Stoney Brooke Assisted Living, Stratford Special Care Community (The), Tri-City Beehive Homes of Riverton, Washington House Assisted Living, Wellington Senior Residence (The), Wentworth Assisted Living Community at Drap, Wentworth at Cottonwood Heights (The), Wentworth at Union Park, Wentworth at Willow Creek (The), Country Pines Retirement Home, Alta Ridge Alzheimer's Facility, Beehive Home - North Salt Lake, Apple Tree Assisted Living, Draper Senior Center, Riverton Senior Center, Sandy Senior Center, South Jordan Senior Center, Murray Clark Cushing Heritage Ctr., Liberty City Center, Friendly Neighborhood Center, Eddie P. Mayne Kearns Senior Center, Harman Home Community Center, South Ogden Senior Center, Marriott-Slaterville Senior Center, Riverdale City Senior Citizen Center

EMERGING AREAS

COUNTY POPULATION PROJECTIONS

Salt Lake County 2021: 0

Utah County 2021: 0

Summit County 2021: 0

Davis County 2021: 0

Weber County 2021: 0

Box Elder County 2021: 0

Tooele County 2021: 0

COUNTY GROWTH RATES

Salt Lake 2008: 0.02%

Utah 2008: 0.04%

Summit 2008: 0.03%

Davis 2008: 0.03%

Weber 2008: 0.02%

Box Elder 2008: 0.01%

Tooele 2008: 0.04%

COUNTY HOUSEHOLD POPULATION PROJECTIONS

Salt Lake County 2021: 0

Utah County 2021: 0

Summit County 2021: 0

Davis County 2021: 0

Weber County 2021: 0

Box Elder County 2021: 0

Tooele County 2021: 0

COUNTY NUMBER OF HOUSEHOLDS PROJECTIONS

Salt Lake County 2021: 0

Utah County 2021: 0

Summit County 2021: 0

Davis County 2021: 0

Weber County 2021: 0

Box Elder County 2021: 0

Tooele County 2021: 0

TRANSPORTATION INFRASTRUCTURE

RAILROADS

TOTAL: 83,205.6 feet