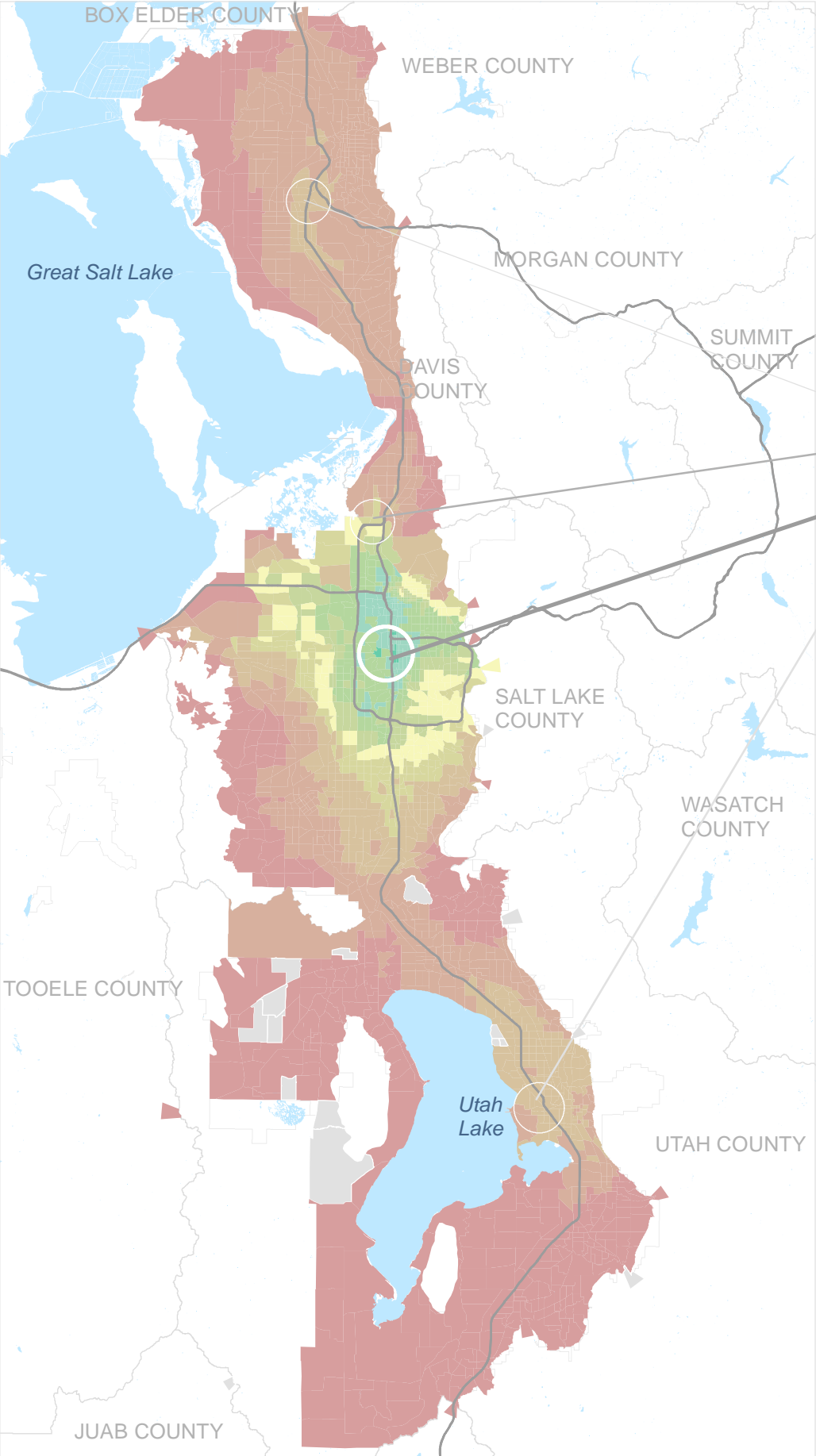


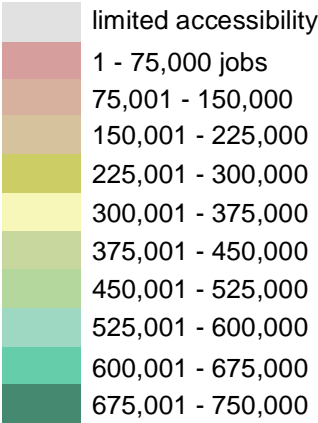
RESIDENTIAL ACCESS TO EMPLOYMENT | 20 MINUTE AUTO TRIP BASE YEAR 2011



RESIDENTIAL AREAS WITH HIGHEST NUMBER OF JOBS WITHIN 20 MINUTE AUTO TRIP (BY COUNTY)

- 4 Roy: average 195,500 jobs
- 2 North Salt Lake: average 290,800 jobs
- 1 South Salt Lake: 606,900 jobs
- 3 Provo: average 199,900 jobs

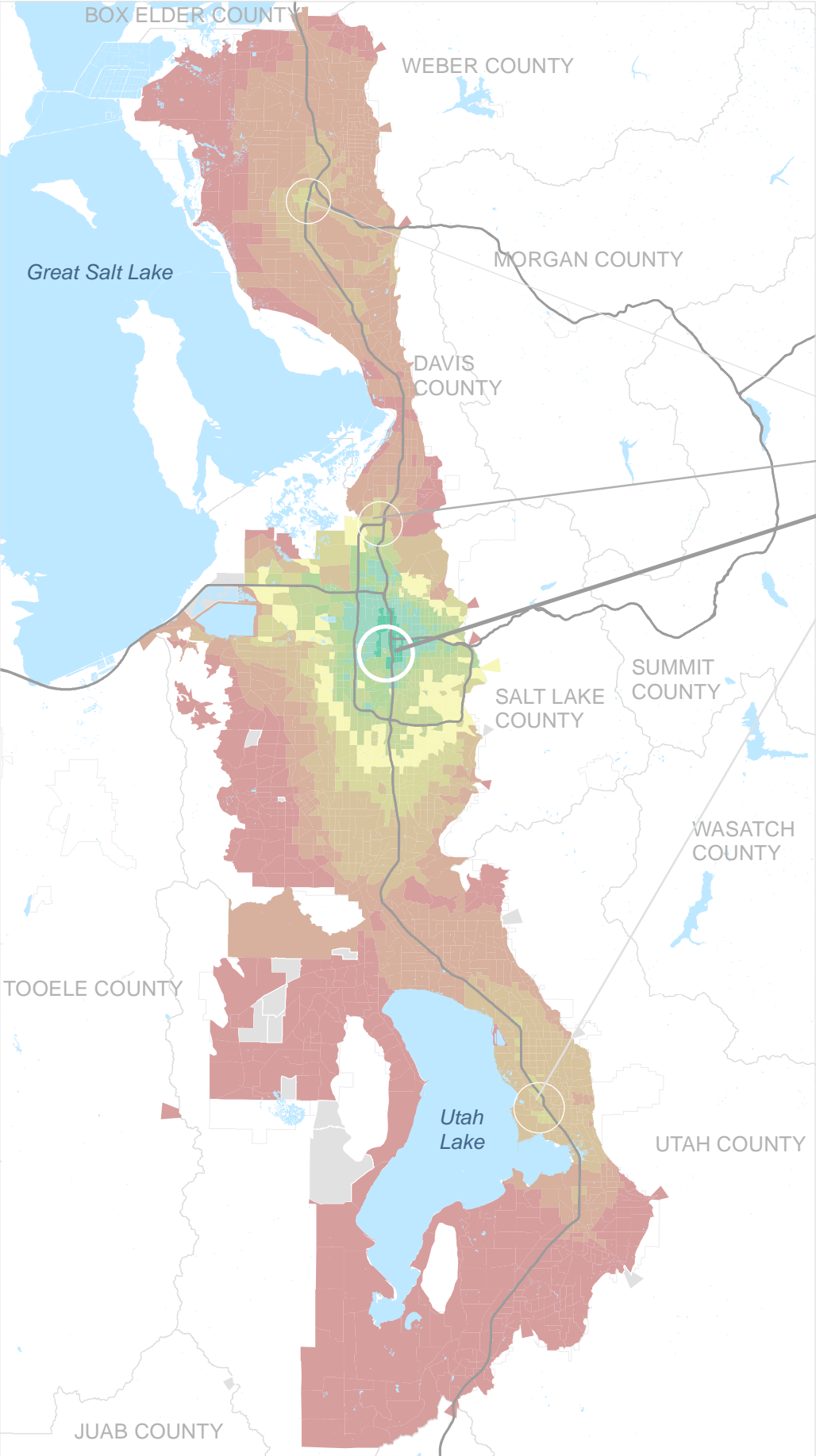
EMPLOYMENT OPPORTUNITIES BY TRAFFIC ANALYSIS ZONE (TAZ)



WASATCH FRONT
URBANIZED AREA



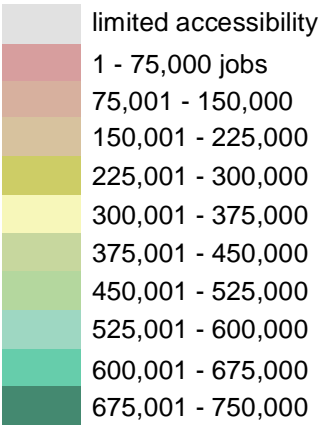
RESIDENTIAL ACCESS TO EMPLOYMENT | 20 MINUTE AUTO TRIP TIP (2019)



RESIDENTIAL AREAS WITH HIGHEST NUMBER OF JOBS WITHIN 20 MINUTE AUTO TRIP (BY COUNTY)

- 4 Roy: average 232,400 jobs
- 2 North Salt Lake: average 291,500 jobs
- 1 South Salt Lake: 633,400 jobs
- 3 Provo: average 233,600 jobs

EMPLOYMENT OPPORTUNITIES BY TRAFFIC ANALYSIS ZONE (TAZ)

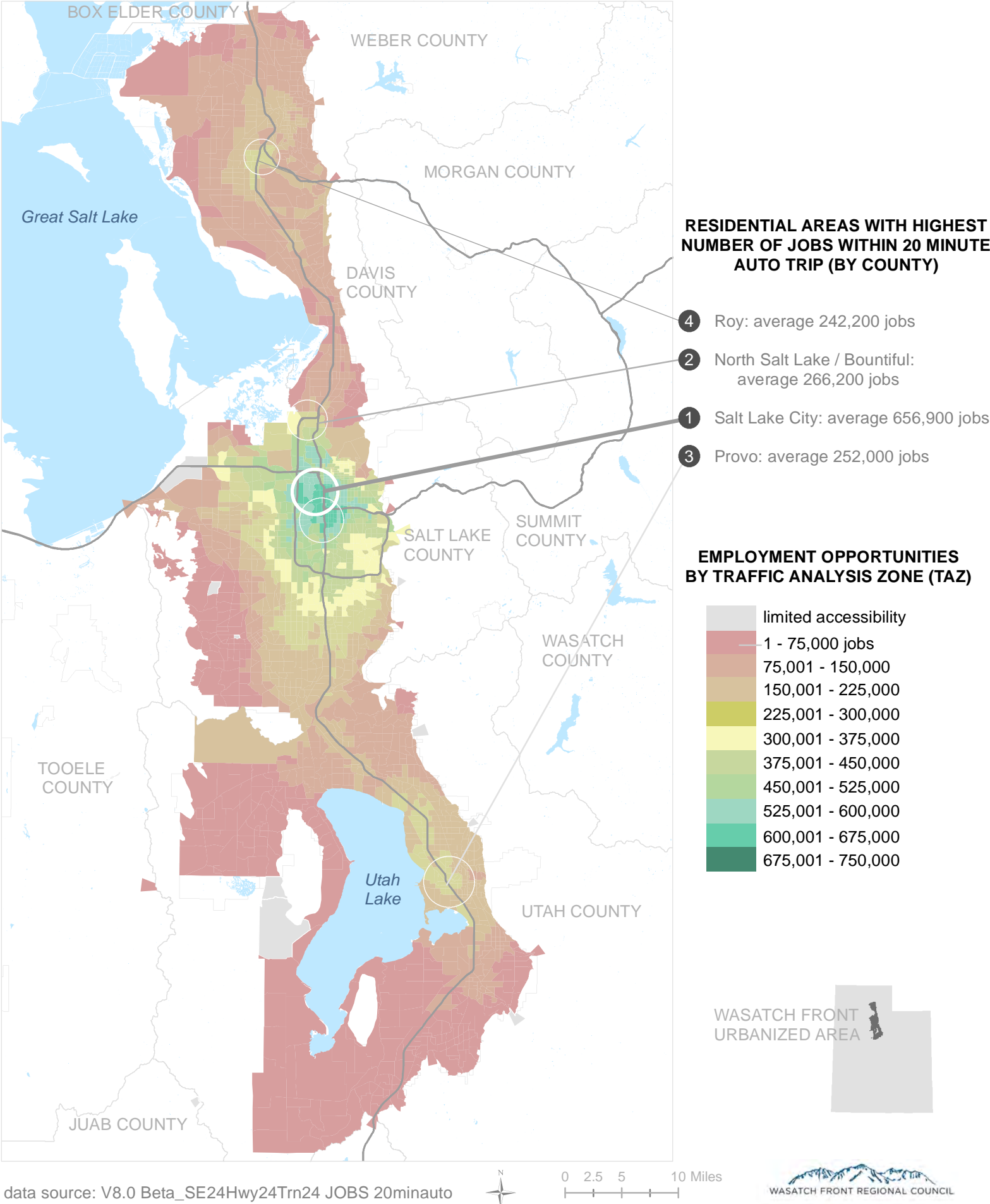


WASATCH FRONT
URBANIZED AREA



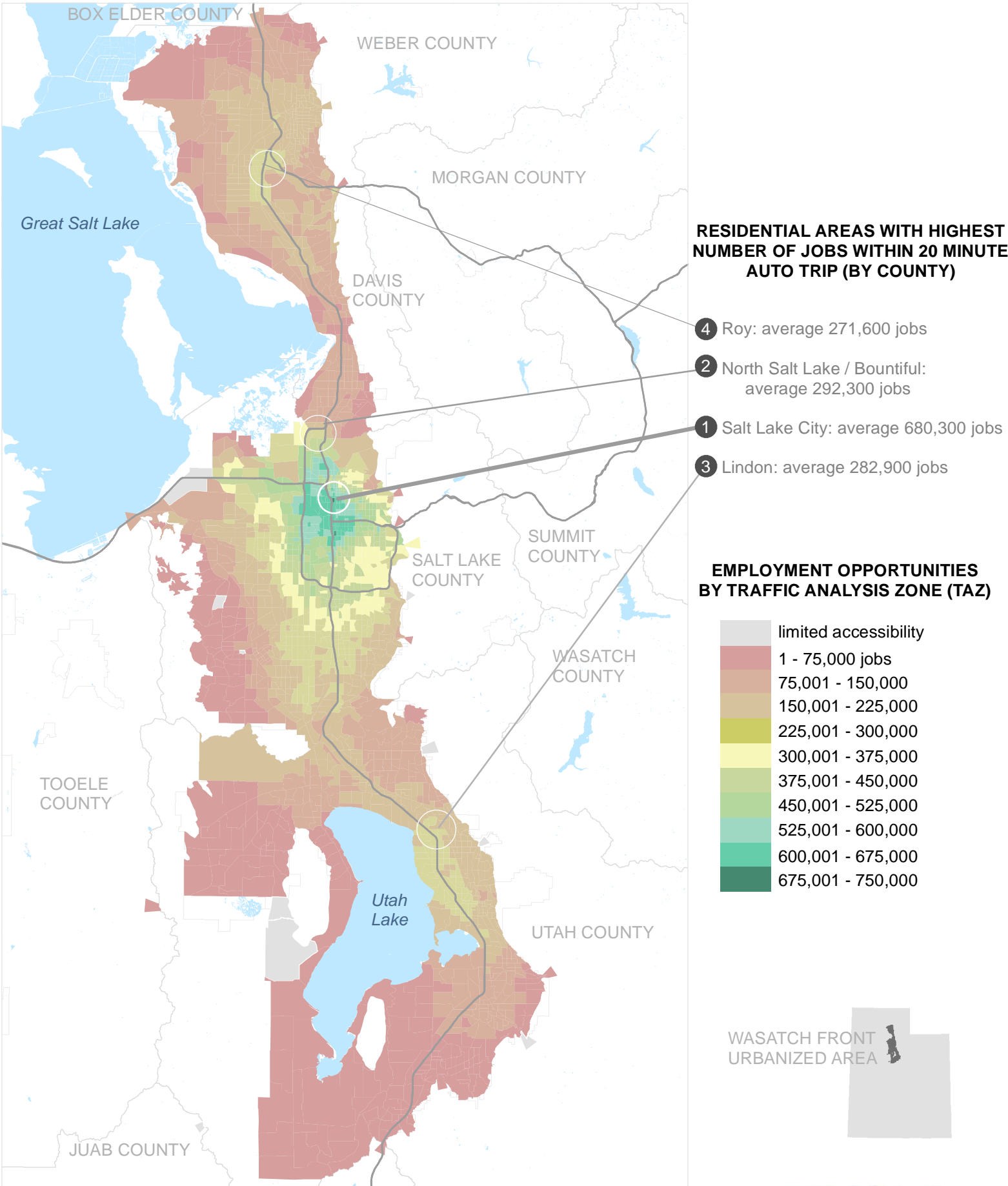
RESIDENTIAL ACCESS TO EMPLOYMENT | 20 MINUTE AUTO TRIP

DRAFT PHASE 1 (2024)



RESIDENTIAL ACCESS TO EMPLOYMENT | 20 MINUTE AUTO TRIP

DRAFT PHASE 2 (2034)



RESIDENTIAL ACCESS TO EMPLOYMENT | 20 MINUTE AUTO TRIP

DRAFT PHASE 3 (2040)

