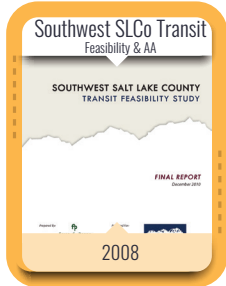
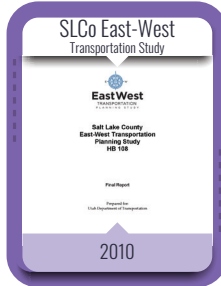


Key Previous Studies



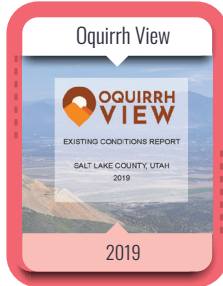
Key Takeaways:

- » The area will continue to experience significant growth in population & jobs.
- » The development patterns did not support investment in fixed guideway transit.



Key Takeaways:

- » The existing transportation infrastructure requires capacity increases to support planned future growth.
- » East-West freeway on 9000 South analyzed. \$2.9B cost and limited mobility benefits.
- » East-West issues are actually North-South issues. The majority of work commuters from SW County travel north.



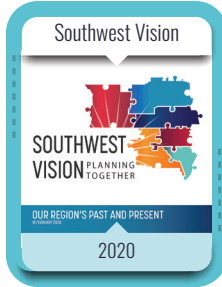
Key Takeaways:

- » Lack of street connectivity inhibits transit & motorists.
- » Transportation improvements need comprehensive community planning to handle growth in a sustainable manner.



Key Takeaways:

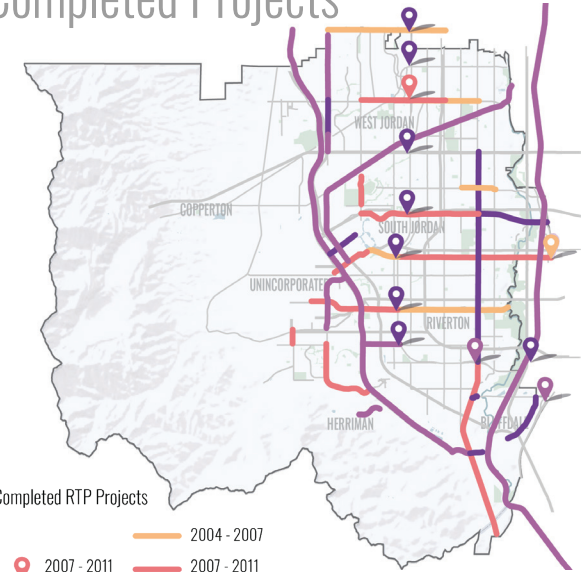
- » SLCo growth is quickly spilling into Utah County with the high number of existing and expected tech sector jobs.
- » The Point of the Mountain bottleneck poses serious transportation issues, both for origin/destination & pass-through trips.
- » A new North-South boulevard and transit line is needed to support existing roadways.



Key Takeaways:

- » The majority of the growing residential population in the area commutes outside of the subregion to work. This causes a strain on the transportation infrastructure as well as the local economy.

Completed Projects

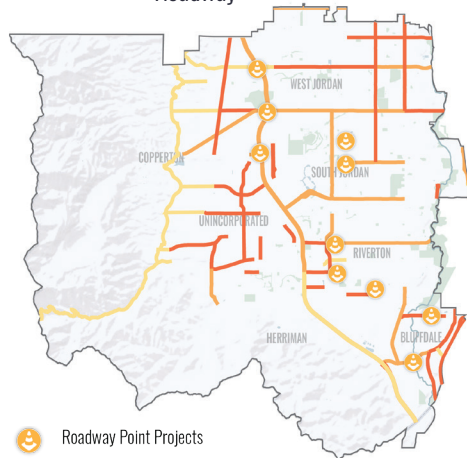


Completed RTP Projects

- 2004 - 2007
- 2007 - 2011
- 2011 - 2015
- 2015 - 2019

2019 - 2050 Regional Transportation Plan Projects

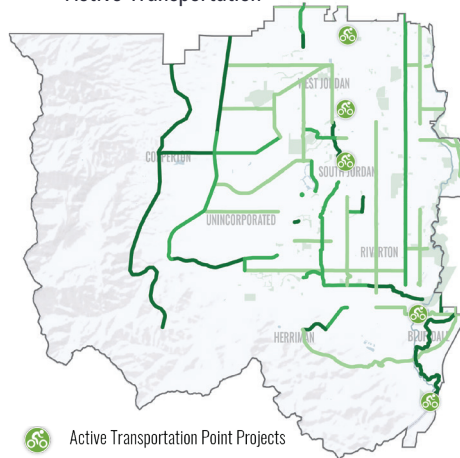
Roadway



Roadway Point Projects

- Phase 1: 2019 - 2030
- Phase 2: 2031 - 2040
- Phase 3: 2041 - 2050

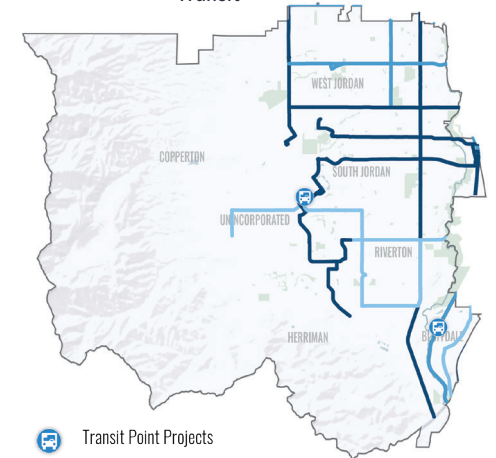
Active Transportation



Active Transportation Point Projects

- Phase 1: 2019 - 2030
- Phase 2: 2031 - 2040
- Phase 3: 2041 - 2050

Transit



Transit Point Projects

- Phase 1: 2019 - 2030
- Phase 2: 2031 - 2040
- Phase 3: 2041 - 2050