

## WHAT WE'RE DOING

Transportation agencies are kicking off a study of Southwest Salt Lake County to develop potential solutions for transportation infrastructure, in consideration of land use plans. This builds on the previous Southwest Salt Lake County Vision effort, in which the majority of concerns expressed related to transportation. The project will:

**A**

**Understand past and current policy decisions, plans, growth rates, and patterns**

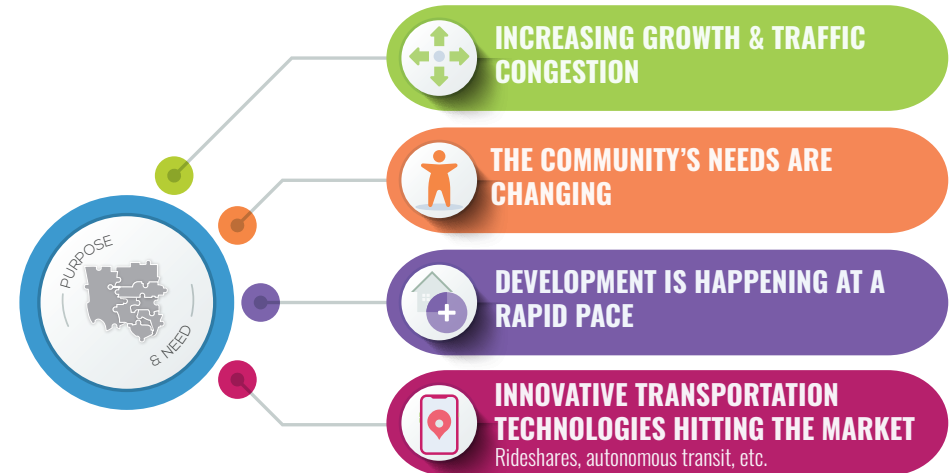
**B**

**Identify transportation hot spots and potential solutions**

**C**

**Analyze potential future scenarios, which includes the link between land use patterns and transportation infrastructure**

## WHY WE'RE DOING IT THIS WAY



## WHAT TO EXPECT IN THIS PROJECT



A deeper analysis into local & regional transportation needs & opportunities



Engaging, & involved participation at scheduled meetings



The development of solutions addressing roadways, transit, & active transportation opportunities

## THE PROCESS

1. Confirm & summarize existing conditions



3. Identify issues & develop potential solutions



2. Review the previous work  
Regional and county transportation plans, city master plans, etc.



4. Analyze a variety of future scenarios based on the issues and potential solutions



5. Make recommendations

