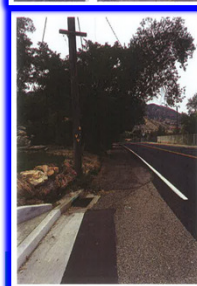
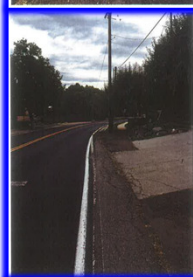
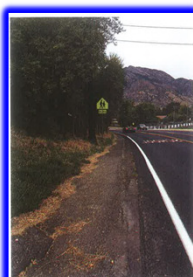
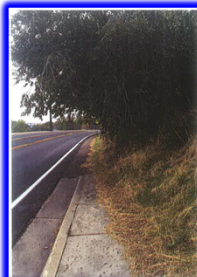
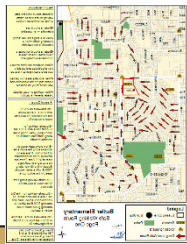
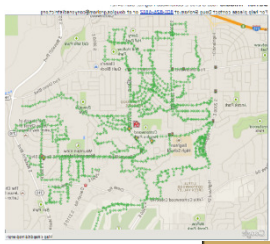
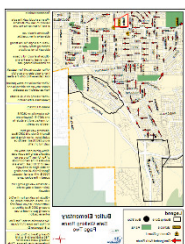


Cottonwood Heights – 2700 East Sidewalk Project

Project Type – Safe Routes to School

7550 South to 7655 South

PROPOSED 2600 EAST SIDEWALK



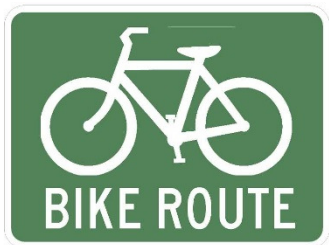
**Project Cost –
\$ 381,400**

**Funds Request –
\$ 355,579**

Major sidewalk gap exists on the east side of 2600 East between South of Toni Circle (7635 S.) to Bridgewater Drive (7655 S.). Existing crossing is at a dangerous location on 2600 East. Proposed sidewalk will relocate crossing to safer location.

Salt Lake County – Kearns Metro Township – Kearns Bicycle Signing Project Type – Capital Improvement

Wayfinding Signage for Kearns Metro Boundaries



BEGIN



Salt Lake County Bicycle Plan Map Kearns Area

- Existing - - - - Proposed
- Cycle/Pedestrian Track
- Buffered Bike Lane
- Bike Lane
- Shoulder Bike Way
- Marked Shared Road
- Signed Shared Road
- Paved Trail
- ★ Safety Lane Markings W/Detection
- ★ Proposed Spot Improvement

West Valley

Proposed 6200 S Alternate E/W Regional Route



Date: 10/9/2013

grams\BTIP Concepts Phase\KEARNS CONCEPTS

Proposed Trail Mobility Improvements



SHARE THE ROAD

Project Cost –
\$ 80,000

Funds Request –
\$ 60,000

Provide wayfinding and bike route direction with pavement markings, signing and striping for the Kearns Metro township bike network. This project will implement needs as identified by the WFRC and Salt Lake County metro area bicycle network master plans to assist tourists, local and regional cyclists find their way in and through Kearns to adjacent city bike ways, rapid transit bus stops, schools, industrial parks, trails, and parks.

Millcreek City – 1300 East Pedestrian Crossing

Project Type – Capital Improvement

Big Cottonwood Park Pedestrian Crossing at 4300 South to 4400 South



1300 East at Big Cottonwood Regional Park looking north



1300 East at Big Cottonwood Regional Park looking south



How does a HAWK Signal operate?			
INSTRUCTIONS			
Drivers		Pedestrians	
...will see this	...will do this	...will see this	...will do this
	Proceed with Caution		Push the Button to Cross
	Slow Down (Pedestrian has activated the push button)		Wait
	Prepare to Stop		Continue to Wait
	STOP! (Pedestrian in Crosswalk)		Start Crossing
	STOP! Proceed with Caution if Clear		Continue Crossing (Countdown Signal)
	Proceed if Clear		Push the Button to Cross

Project Cost –
\$ 161,000

Funds Request –
\$ 150,000

Installation of a Pedestrian Hybrid Beacon (HAWK) on 1300 East at Big Cottonwood Park. Big Cottonwood Regional Park is located at approximately 4300 South and 1300 East in Millcreek City. The nearest signalized intersection, and safe pedestrian crossing, is at 4500 South Street. Residents from the neighborhoods on the east side of 1300 East need a safe crossing to the park. In addition to providing access to the park the crossing will provide east/west connectivity through the park to 1100 East and continuing west.

Salt Lake City – Transit Stop Improvements

Project Type – Capital Improvement

City Wide

BEFORE IMPROVEMENTS:



300 West @ 25 North
Bus stop #117110
New ADA landing zone (2'x15')
New concrete pad for shelter, bench, trash (5'x15')
Appears to be in City owned ROW
Approximately 105 s.f. of new concrete
Multiple request from passenger to improve this location

Project Cost
\$ 200,000

Funds Request
. \$ 186,000

AFTER IMPROVEMENTS:



Approximately 83% of bus stops in Salt Lake City are unimproved, making them challenging for people with disabilities to access and lacking a bench or shelter for all riders waiting for the bus. This project would include concrete pads, ADA accessibility, and amenities at the busiest and highest need stops. Ridership on 200 South saw an 18% increase in ridership after such improvements. UTA funds that were previously used for these improvements are now programmed for TIGER first/last mile projects, and both UTA and the City have been working to fill this funding gap.



Salt Lake City Transportation – SLC Bike Share

Project Type – Capital Improvement

900 West to 1100 East – 600 North to 1100 South



**Project Cost –
\$ 373,973**

**Funds Request –
\$ 350,260**

The bike share program provides an option for commuters to link local destinations with regional transit via bicycle and reduce short car trips in the downtown area. GREENbike works to improve the community's health and reduce carbon emissions and vehicle miles traveled by providing alternatives to automobile trips. This funding will provide 7 stations, 170 docks, 7 kiosk, and other infrastructure necessary to maintain and grow a robust bike share system. This TAP money will be used to get closer to the goal of 75 stations in 2019 as outlined in the GREENbike Strategic Implementation Plan.

UTA – Update Bike Cars on FrontRunner Project Type – Capital Improvement

North Temple to Draper



**Project Cost –
\$ 194,800**

**Funds Request –
\$ 181,612**

This request is for new bike racks on 10 of UTA's 16 FrontRunner bike cars. There is a bike car on each FrontRunner train consist. Current racks have capacity for 9 bikes each while the new configuration has room for 15. While riders appreciate bike accommodation, they are concerned about capacity, usefulness, and safety.

Salt Lake Valley Metro Area



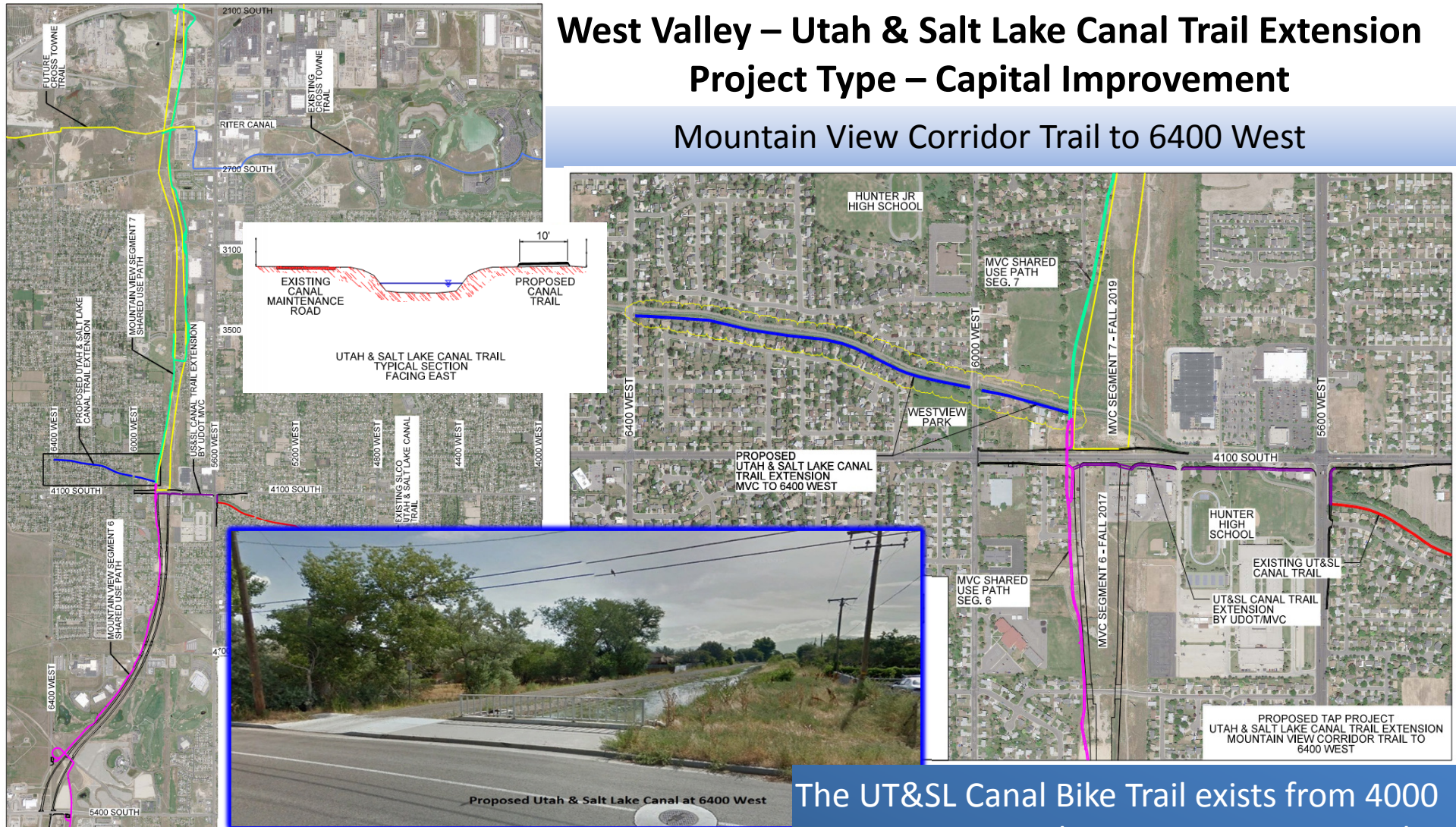
Funds Request – \$ 279,597

Ridership data is lacking in Utah. Planning and network expansion are improving, but agencies are asking questions about ridership that we do not currently have the ability to answer. This project will place automatic counters at strategic locations around Salt Lake County to begin collecting this vital data.

West Valley – Utah & Salt Lake Canal Trail Extension

Project Type – Capital Improvement

Mountain View Corridor Trail to 6400 West



Project Cost –
\$ 291,000

Funds Request –
\$ 271,299



The UT&SL Canal Bike Trail exists from 4000 W - 5600 W, with a new tie to MVC Trail being built late 2017. By 2019 the MVC trail will extend from Bluffdale to Calif Ave. This proposed project extends the UTSL Canal Trail to 6400 West, improving access to the regional trail network.