

# Cottonwood Heights – HAWK Pedestrian Crossing on Fort Union Blvd.

## Project Type – Capital Improvement

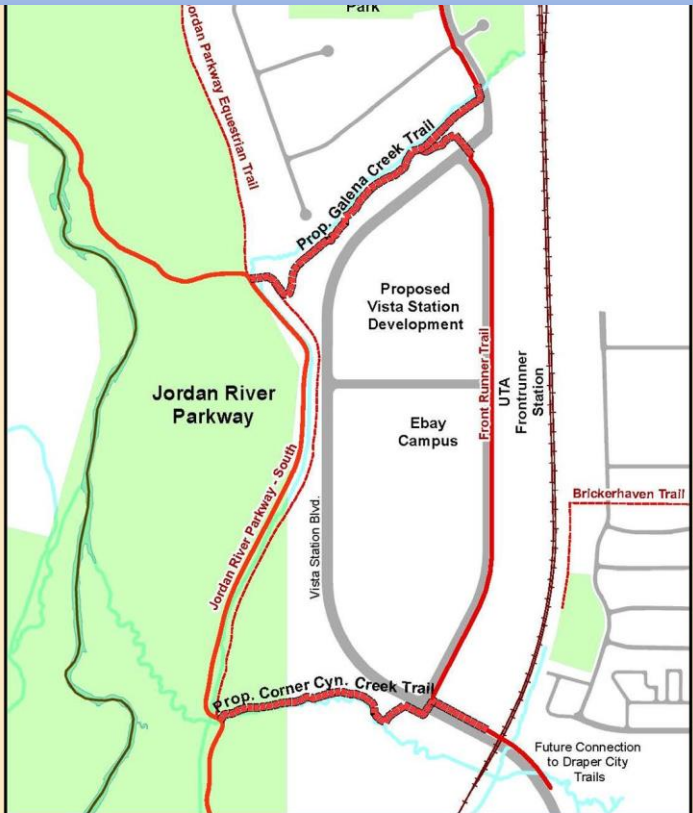
At West Side of Mountview Park Entrance (Approx. 1600 East)



# Draper City – Vista Station Trails

## Project Type – Capital Improvements

### Jordan River Parkway Train to Draper UTA FrontRunner Station



#### Vista Station Trails



Gap between existing Jordan River Parkway Trail and Vista Station Blvd., due to wetlands and topography



Existing trail to FrontRunner Station



Existing cross walk to existing FrontRunner Trail

**Project Cost –**  
**\$ 504,900**

**Funds Request –**  
**\$ 470,718**

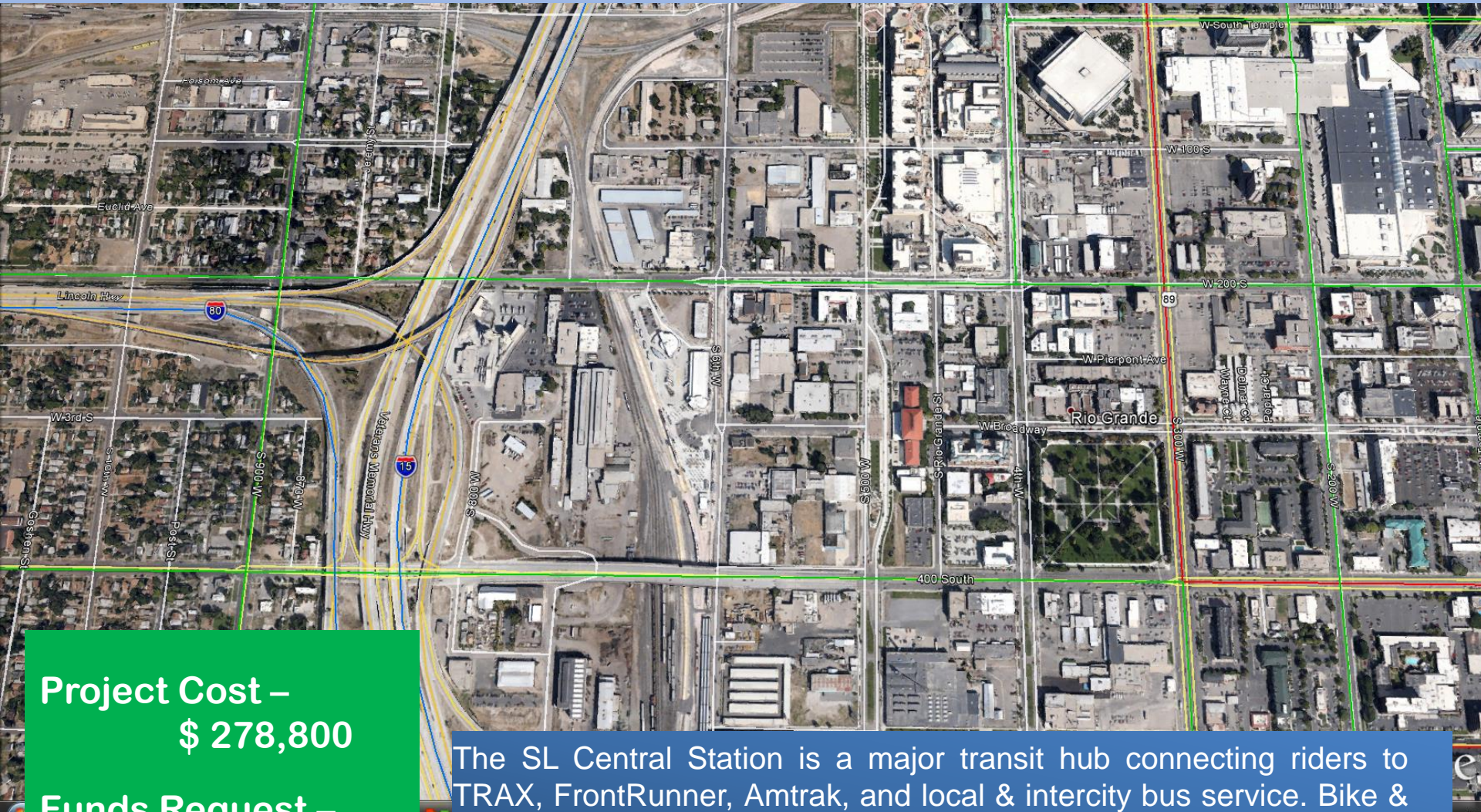
The project will consist of two 1/2 mile multi-use trails which will provide a critical access loop from the Jordan River Parkway Trail to the new Frontrunner station, the recently completed eBay campus, Galena Hills Park, and the future high density development planned in the area.



# UTA/Salt Lake City – Salt Lake Central Station Area Bike/Ped Improvements

## Project Type – Capital Improvement

Enhance Walkability and Bike ability



**Project Cost –**  
**\$ 278,800**

**Funds Request –**  
**\$ 259,925**

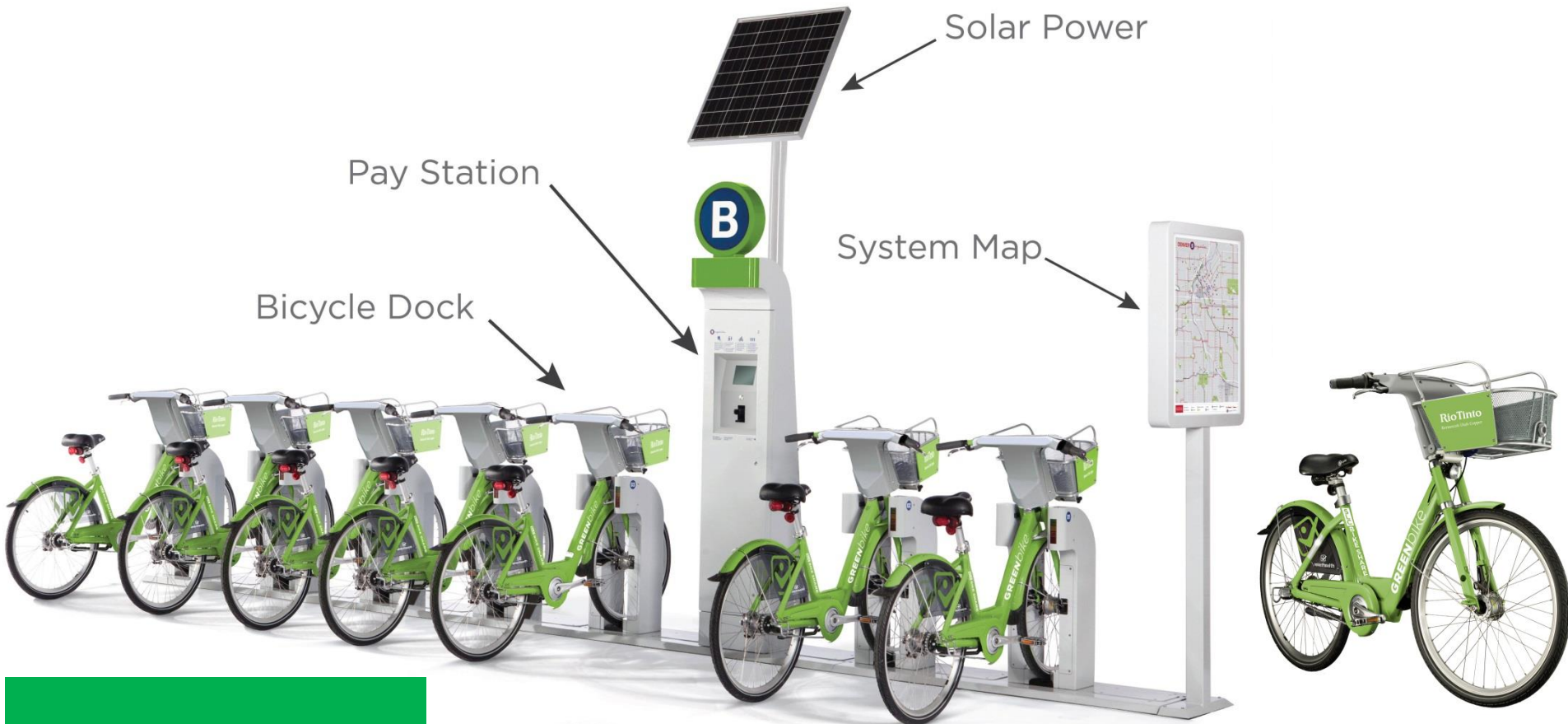
The SL Central Station is a major transit hub connecting riders to TRAX, FrontRunner, Amtrak, and local & intercity bus service. Bike & pedestrian activity is concentrated in this area, as riders access the station from areas near downtown. Improvements could be made to enhance walkability and bike-ability at this location.



# Salt Lake City – Bike Share Program

## Project Type – Capital Improvement

600 West to 700 East/North Temple to 400 South



**Project Cost –**  
**\$ 2,001,200**

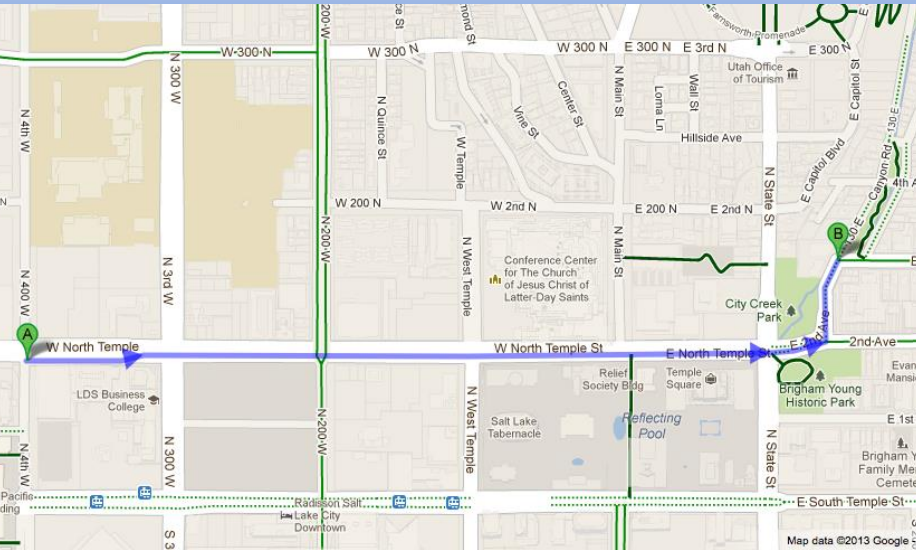
**Funds Request –**  
**\$ 248,178**

The Bike share program provides high-quality bicycles for commuters to link local destinations with regional transit. A network of bike share stations within a dense urban area provides a fast, flexible, and affordable transit option for the last mile of regional transit trips.

# Salt Lake City – Complete Street & Bike Connection

## Project Type – Planning/Study

North Temple at 400 West to 3<sup>rd</sup> Ave at Canyon Road



**Project Cost –**  
**\$ 50,000**

**Funds Request –**  
**\$ 37,500**

Develop a corridor plan for a complete street and separated family-friendly bikeway on North Temple through the heart of downtown Salt Lake— connecting west to the Grand Boulevard and east to Memory Grove/Avenues. The plan will also improve pedestrian crossings, bus stops, & bus shelters and consider a separate bus lane.



# Sandy – Sandy Canal Trail

## Project Type – Capital Improvements

11400 South 880 East

		
1. Dark until activated	2. Flashing yellow light for 3–6 s	3. Steady yellow light for 3–6 s
		
4. Steady red light during pedestrian interval	5. Alternating flashing red lights during pedestrian clearance interval	

**Project Cost –**  
**\$ 199,800**

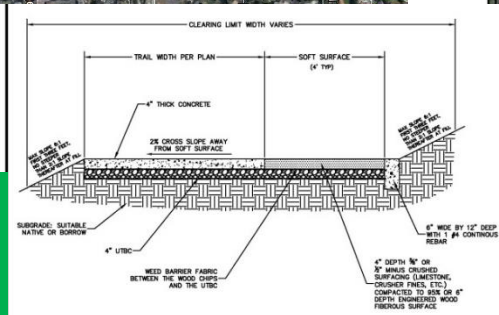
**Funds Request –**  
**\$ 186,274**



Install HAWK signal for crossing major arterial (11400 S).



## 10200 South to 10000 South



**Funds Request –  
\$ 72,067**



Install 544 feet of trail to complete the trail between  
10200 South to 10000 South



## 10400 South to 10200 South



## Funds Request – \$ 81,297

The purpose and need of the trail is to connect to two street terminus on 10200 South and 10400 South. It is anticipated that the trail will accommodate all types of uses such as jogging, running, walking, and biking. The trail improvements include but not limited to asphalt pavement, untreated base course, grading, and signs.



# South Salt Lake 300 West – Parley's Trail

## Project Type – Capital Improvement

### Haven Avenue to Andy Avenue



**Project Cost –**  
**\$ 239,135**

**Funds Request –**  
**\$ 160,100**

This project will allow trail users to safely cross 300 West as part of the Parley's Trail regional trail system by installing pedestrian activated beacons on 300 West at Haven Ave., bike lanes from east of the existing TRAX crossing at Haven Ave. to 300 West, and installing a 10 foot wide trail along the west side of 300 West from Haven Ave. to Andy Avenue.



# West Jordan – 7800 South – Gardner Village Bridge

## Project Type – Capital Improvement

North-side of 7800 South - East Bank Jordan River to West Bank Jordan River



**Project Cost –**  
**\$ 668,200**

**Funds Request –**  
**\$ 622,963**

The current Jordan River Bridge at 7800 South does not accommodate pedestrian or bicycle traffic, and the need for this link to the TRAX station and Gardner Village, a regular tourist attraction in the Salt Lake Valley, is needed. Recent development has surrounded the area, and continues to increase. Also, at some point in the future, the vehicle bridge will need replacement, and having this alternative in place will help the public during the reconstruction of that facility.



# West Valley – Cross Towne Trail Extension

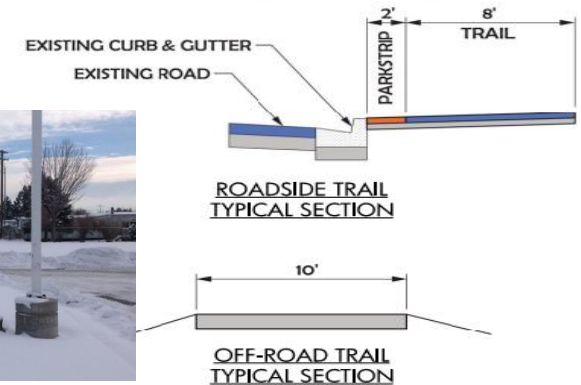
## Project Type – Capital Improvement

2700 West to 3200 West



### LEGEND

- EXISTING TRAIL SEGMENT
- FUTURE TRAIL SEGMENT
- MOUNTAIN VIEW CORRIDOR PROPOSED TRAIL
- PROPOSED TAP PROJECT



**Project Cost –**  
**\$ 450,700**

**Funds Request –**  
**\$ 402,474**

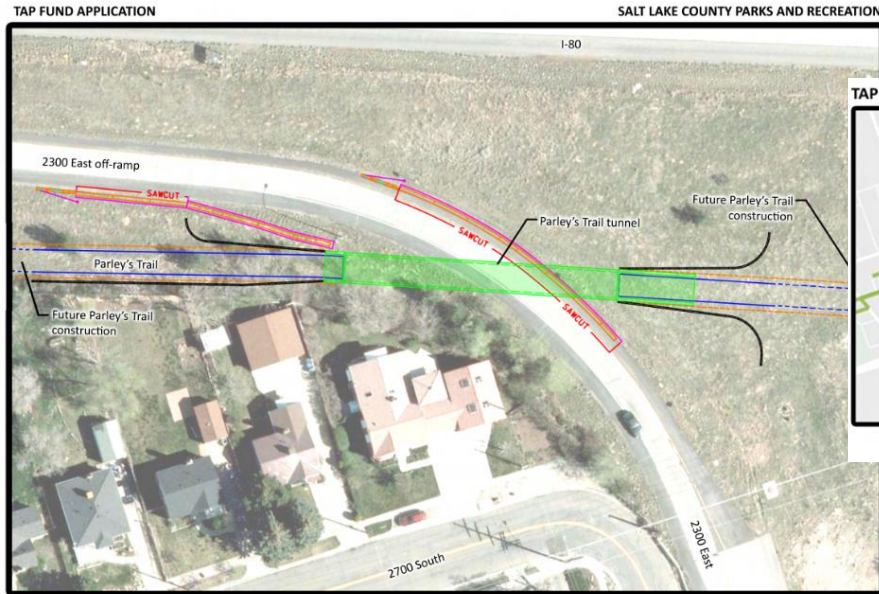
The Cross Towne Trail is an important transportation alternative in the central part of the Salt Lake Valley. The trail ultimately will run from the east boundary of the city to the west boundary. The facility provides critical connections to existing trails and transportation centers.



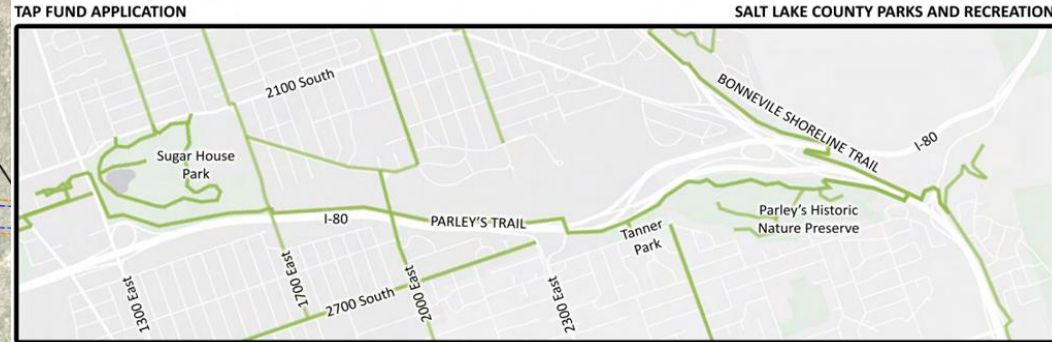
# Salt Lake County – Parley's Trail – 2300 East Tunnel Crossing

## Project Type – Capital Improvements

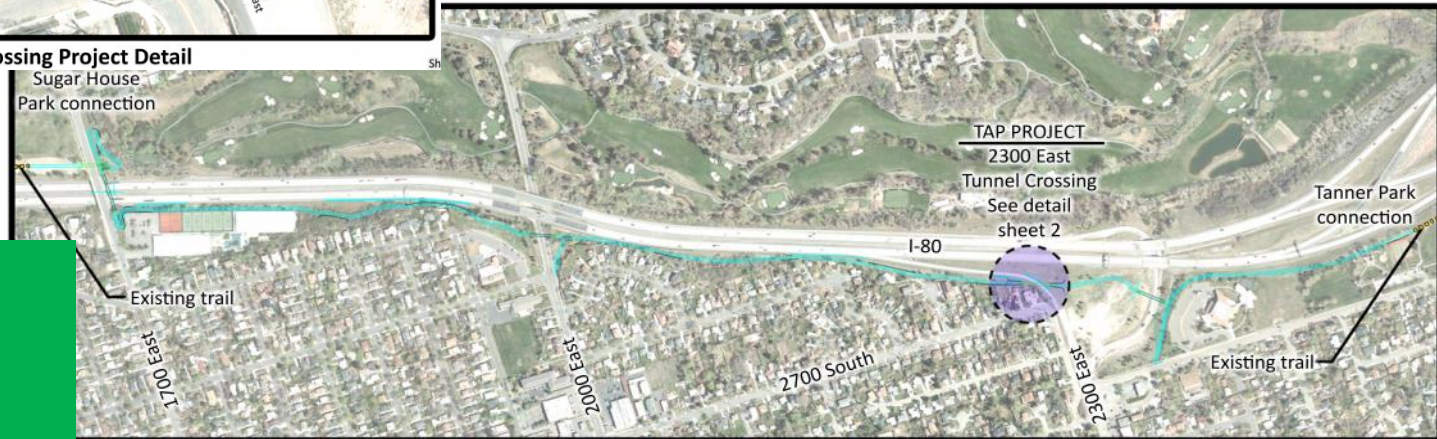
Under the 2300 East Off-ramp from I-80



2300 East Tunnel Crossing Project Detail



REGIONAL MAP



PARLEY'S TRAIL ALIGNMENT - 2600 EAST TO 1700 EAST SEGMENT

Project Cost –  
\$ 1,224,600

Funds Request –  
\$ 250,000

Provide a grade separated crossing to prevent conflicts between high speed freeway off ramp and slower pedestrian and cycling traffic.