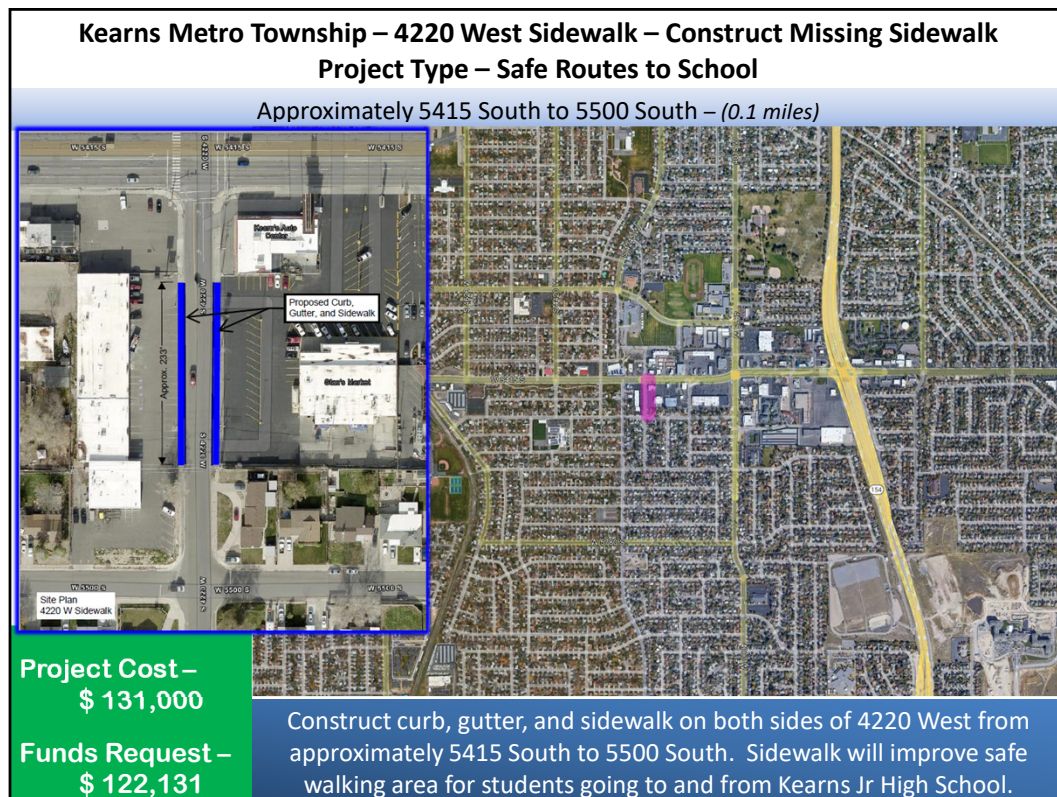




Unsafe conditions and a lack of facilities are significant barriers for people walking and biking. This project will create the initial transportation backbone for a trail running through Cottonwood Heights along Highland Drive from Holladay City to Sandy City. This project will connect to existing active transportation trails on Bengal Boulevard and Fort Union Boulevard. Highland Drive is a high stress roadway with high traffic speeds, the only way to provide safe alternative forms of transportation is to construct a grade separated trail.



It is a core spine route for Herriman's Active Transportation, once this and the phase 1 (previously funded) are completed Herriman can continue to build out from these central projects.



4220 West is located in Kearns Metro Township. This road is used to access private businesses and could be implemented into the Safe Route to School Plan for Kearns Jr. High School once improvements are completed. This new section sidewalk will allow school children to walk along either side of 4220 W to get to Kearns Jr. High School. Currently the students walk in the vehicular lanes. This new sidewalks would greatly benefit the community and school by encouraging the students to walk to school and having a safe route. This project also include adding curb and gutter to provide added safety for all users, once this and the phase 1 (previously funded) are completed.

Millcreek – S. Birch Drive Sidewalk – Ped & Bike

Project Type – Other

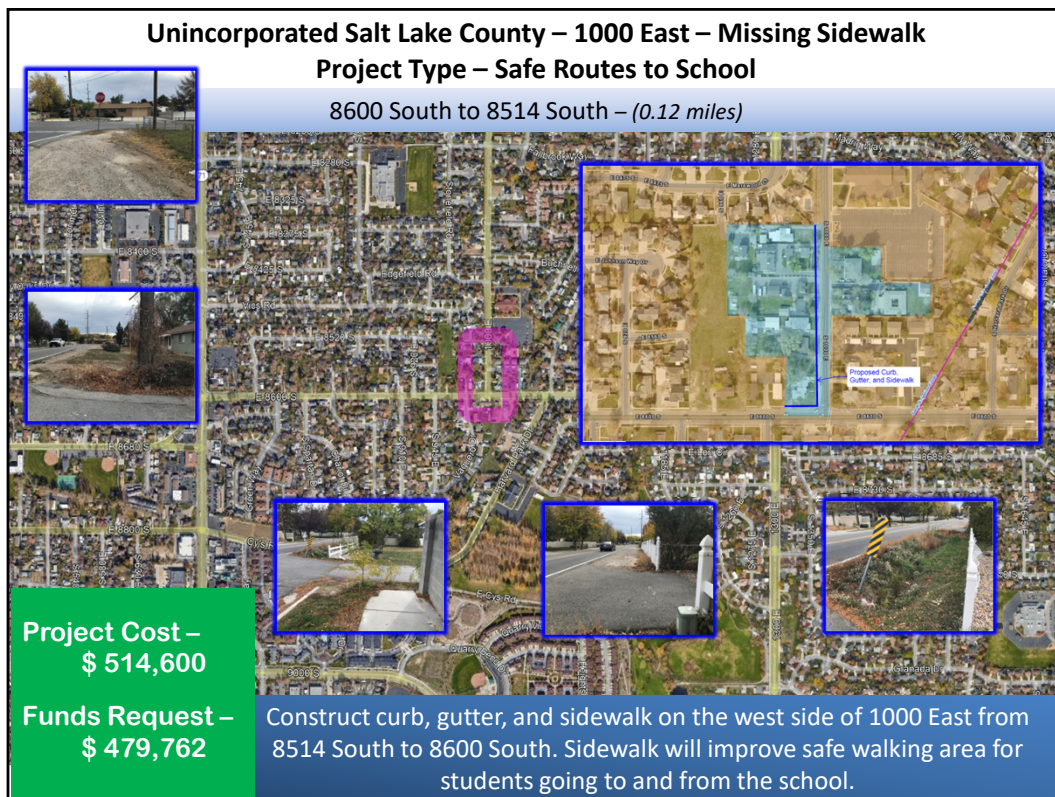
E Upland Drive to 3900 South – (0.16 miles)

Project Cost –
\$ 913,400

Funds Request –
\$ 758,333

S Birch Dr is a heavily trafficked minor residential street providing access from Skyline High School to 3900 S a minor North/South arterial East through the East side of the Salt Lake Valley. This project will create a safer environment for all users including the demolition of inadequate water ways on the west side of the corridor with curb and gutter, construction of sidewalk, and ADA ramps.

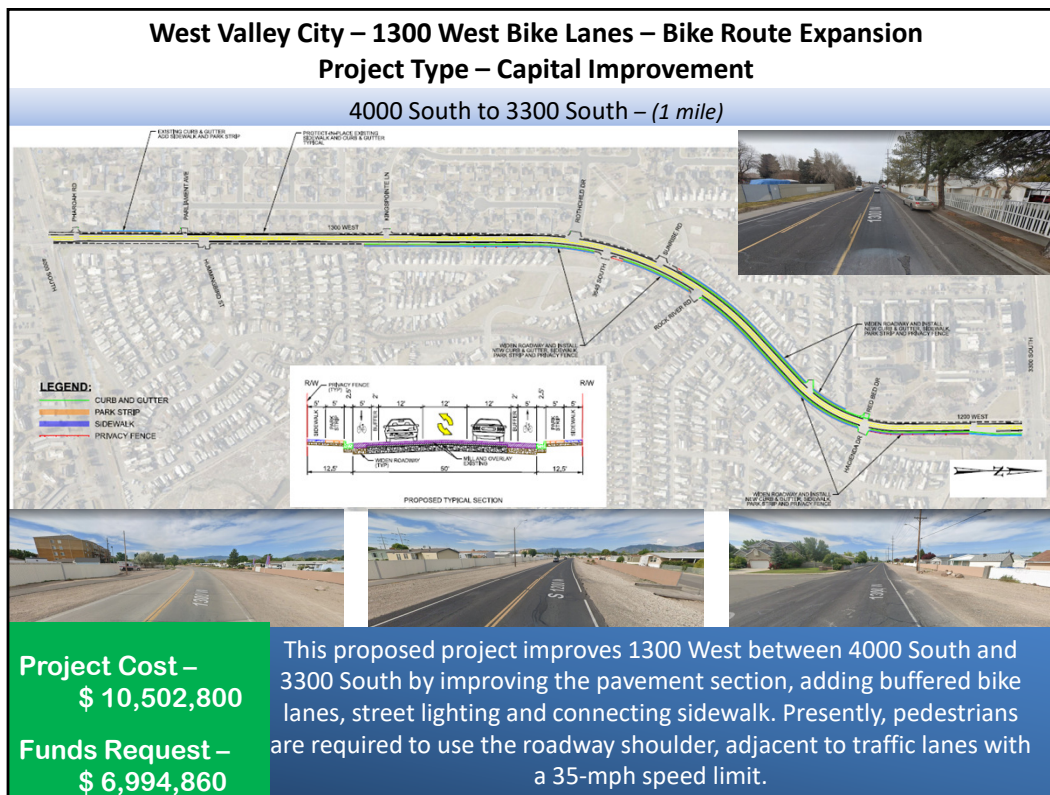
The project would provide a necessary and final segment link between a shoulder bikeway on Upland Dr and a protected bike lane with share the road signage and ADA compliant sidewalk for pedestrians. Approving this project would provide ultimate connections to Wasatch Blvd. and the 3900/4100 S Salt Lake Valley corridor. The improvements would enable access to the nearby Olympus Park and Ride in addition to UTA Bus Route #39. Safety is improved for students of Skyline High School, Wasatch Junior High, and Upland Terrace Elementary.



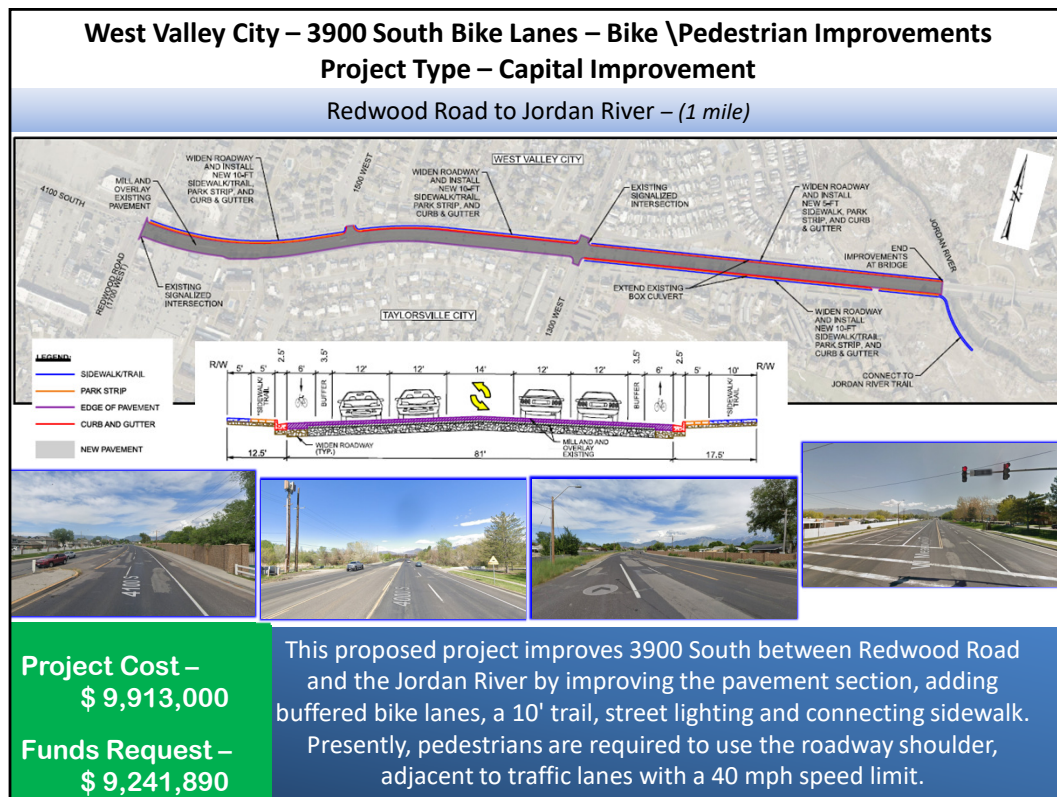
1000 East is a local roadway in Unincorporated Salt Lake County. This road is used to access East Sandy Elementary School and is currently on the Safe Route to School Plan. This new section sidewalk will allow elementary school children to walk along elementary school children to walk along 1000 East to get to East Sandy Elementary School. Currently the students walk on the park strip. This new sidewalk on the West side of 1000 East would greatly benefit the community and school by encouraging the students to walk to school and having a safe route. This project also include adding curb and gutter to convey the drainage down south to an inlet structure.



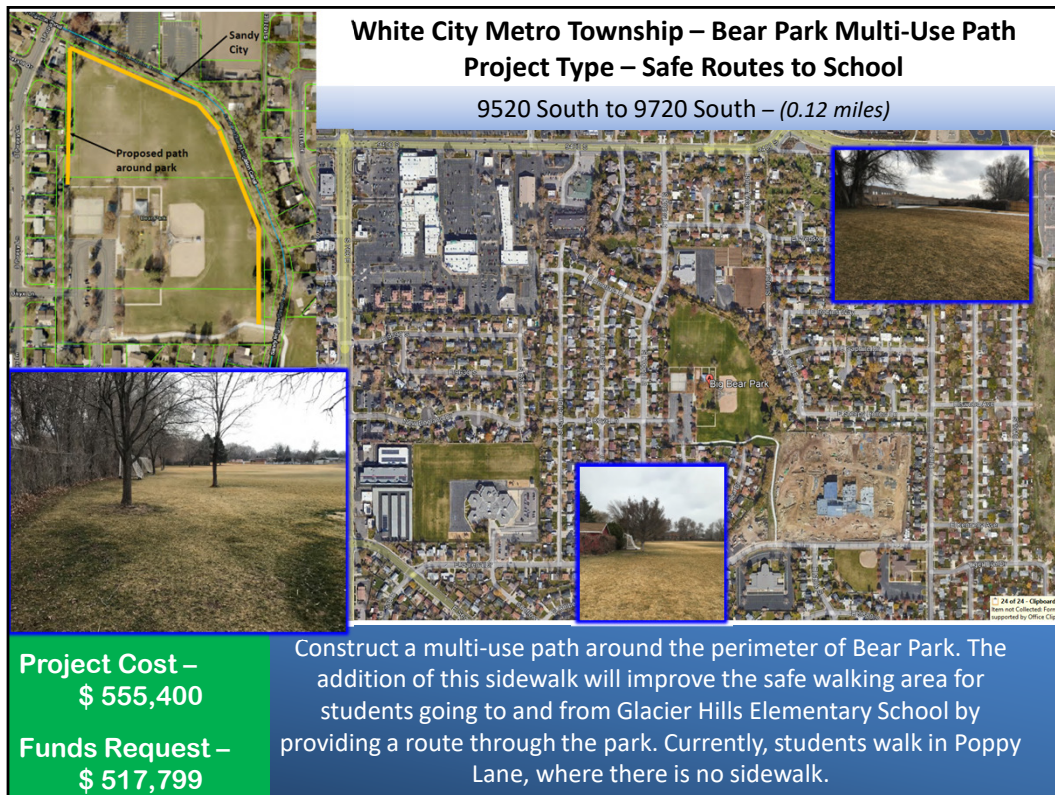
8425 South is a local roadway in Unincorporated Salt Lake County. Although this road is not included on the elementary safe routes, this road is used to access East Sandy Elementary School and is connected to roads that are part of the schools safer routes. This new section sidewalk on both side of the road will allow elementary school children to walk along 8425 South to get to East Sandy Elementary School. Currently the students walk on the roadway before accessing sidewalk on 745 East. This new sidewalk on the both sides of the 8425 South would greatly benefit the community and school by encouraging the students to walk to school and having a safe route. This project also include reconstucting the curb and gutter to convey the drainage to the inlet structures on 700 East.



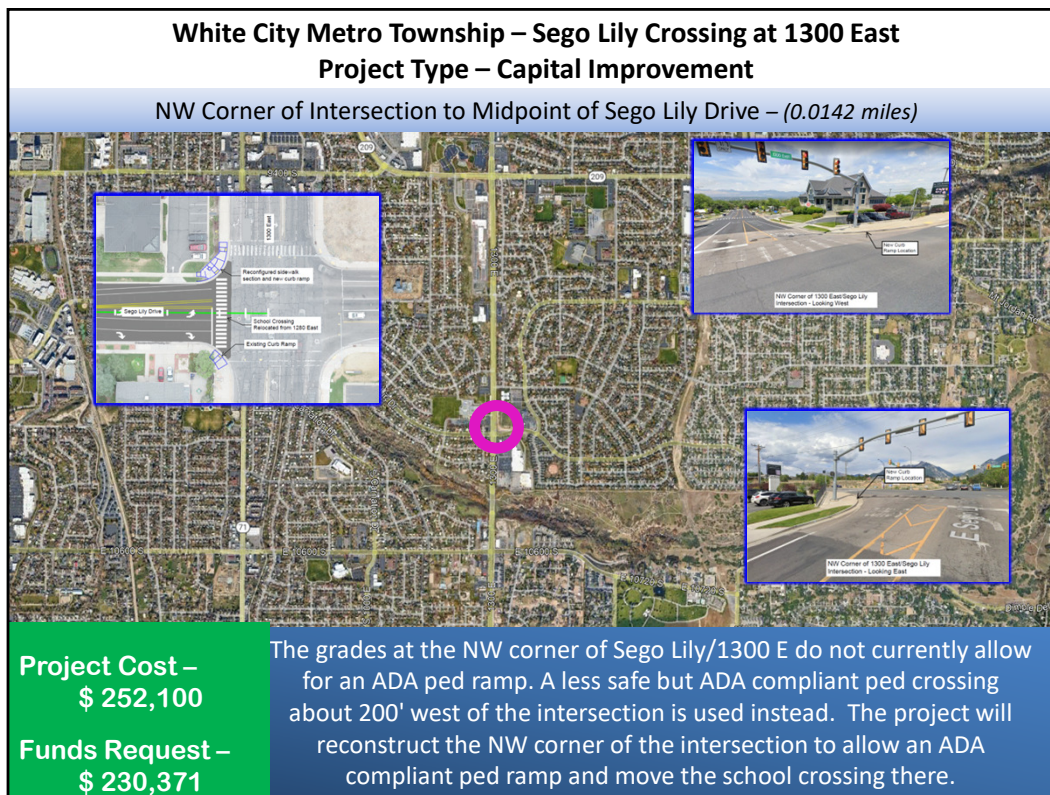
This project is an essential trail connection in West Valley City, and for other residents of Salt Lake County. The project furthers efforts to improve the local and regional trail network. The connections to transit provide users and commuters with more transportation alternatives. The trail is innovative in that it uses existing corridors to provide another north-south transportation alternative.



This project is an essential trail connection in West Valley City, and for other residents of Salt Lake County. The project furthers efforts to improve the local and regional trail network. The connections to transit provide users and commuters with more transportation alternatives. The trail is innovative in that it uses existing corridors to provide another east-west transportation alternative.



Bear Park is located in White City Metro Township. This park and its paths are used to access Glacier Hills Elementary School and is currently terminus of the recently constructed Sandy Canal Trail. This new section of multi-use sidewalk will allow elementary school children to bypass walking in vehicular lanes of Poppy Lane to get to Glacier Hills Elementary School by entering the park area at Emerald Drive. This new multi-use sidewalk would greatly benefit the community and school by encouraging the students to walk to school and having a safe route. The multi-use path would also serve as a perimeter trail for users of the park and the Sandy Canal Trail.



The crosswalk attendants at the existing crossing at 1280 E have reported many near misses and there have been a couple accidents at the crosswalk in the last couple of years. The school district has asked us to address the issue before more people get hurt. The current configuration of where the existing school crossing is situated also creates traffic flow issues on both Sego Lily (getting WB cars through the intersection) and 1300 East (getting SB right turns and NB left turns through the intersection). This project will provide a safer crossing location for school children, will provide an ADA compliant crossing for pedestrian users on 1300 East, and provide better traffic flow.