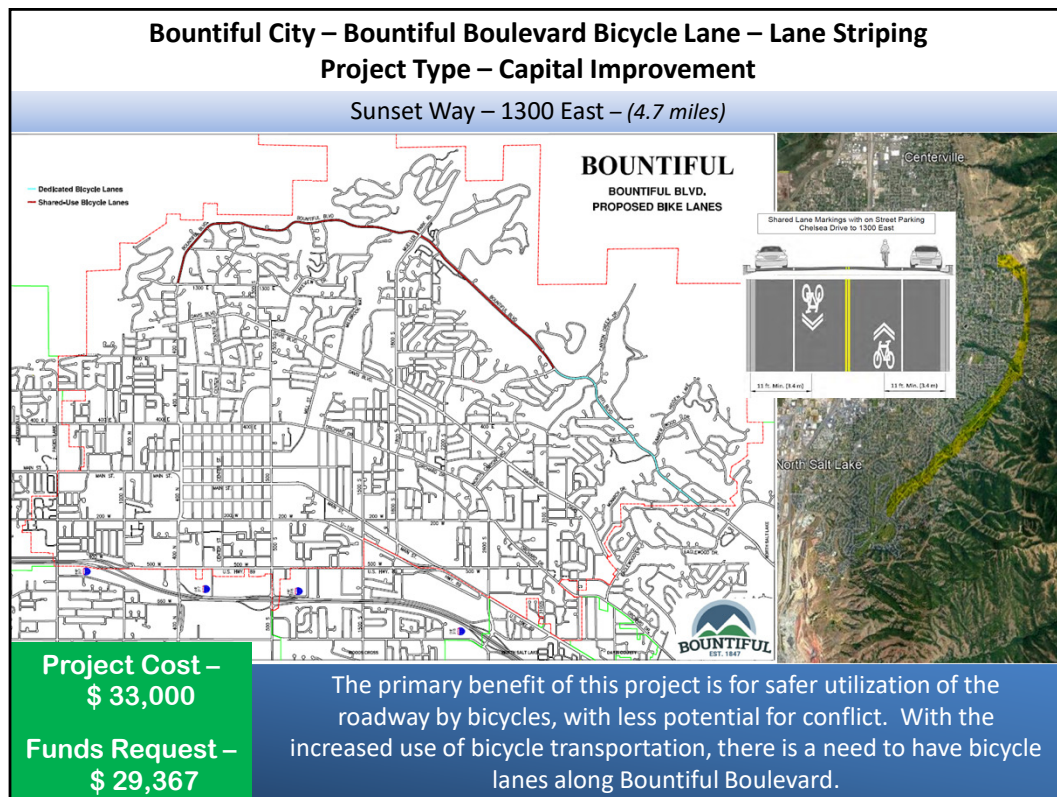
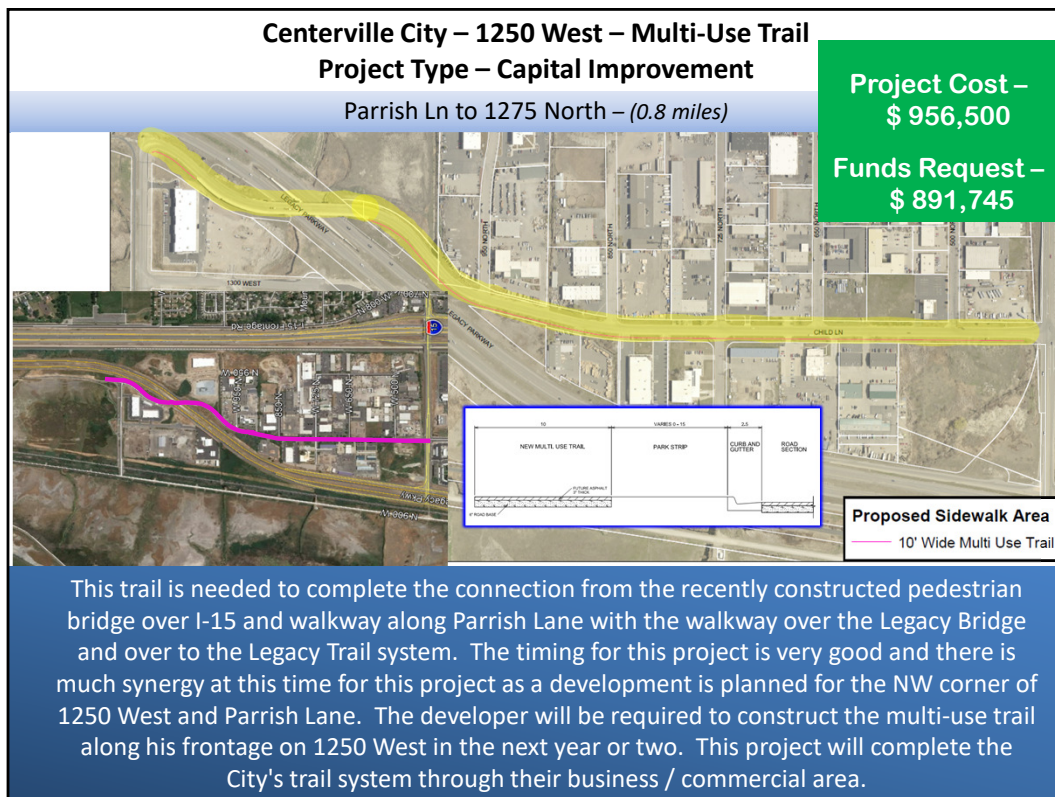


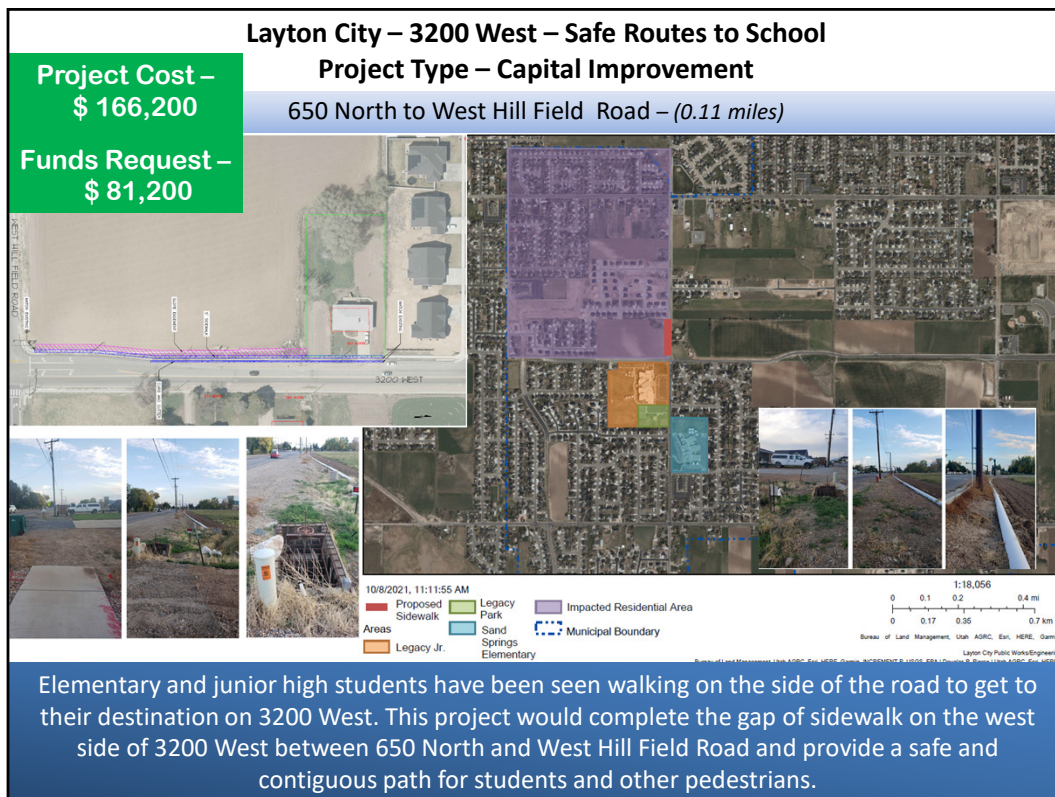
This project is included in the regional transportation plan. The trail will provide new recreation opportunities for residents in Box Elder County. Eventually, the project can be expanded to the north/south and tie into other trail systems. It will also provide a safer route for bikes and pedestrians.



This project should be selected because it is a relatively low-cost solution for improved safety of a corridor that is part of the Wasatch Choice Vision for the growing use of bicycles. Also, the city is including a match of \$4000 to go toward this project.



This project is critical for connectivity of Centerville City's west side commercial area as well as for recently approved High Density housing and mixed -use developments. There are currently no pedestrian or bicycle paths or trails along this stretch of 1250 West. The timing for the project is prime as there is a recent housing and multi-use development that has been approved by City Council at the NW corner of 1250 West and Parrish Lane. This developer will be required to install the multi-use trail along the development 1250 West frontage. There is much synergy for this project in that the multi-use trail and pedestrian overpass have just recently been completed. This will serve as completely filling in a missing gap from Parrish Lane to the Legacy Trail as well as servicing the entire business / commercial park area. This is the highest priority TAP project for Centerville City as it will complete our Trail system on the West Side of Centerville.



This route is designated as a safe route to school in both Legacy Jr. High and Sand Springs Elementary Safe Route to School Maps. Between 650 North and West Hill Field Road along the west side of 3200 West there are many obstacles that prevent students from using this route for their daily commute and a major concern in this area is that students and pedestrians risk crossing 3200 West to access the sidewalk on the east side of the road. The ground is uneven and forces pedestrians to walk on the road, which is what we want to prevent. The posted speed limit sign for 3200 West is 35 MPH and the Average Daily Traffic for this road is 7,500 vehicles per day. A crash summary report along this segment of 3200 West indicates a total of 29 crashes within the last 10 years. In the most recent years, 2018-2020, there were a total of 11 crashes which accounts for about 38% of the total crashes within the 10-year span.

North Salt Lake – Redwood Road – Sidewalk Connections

Project Type – Capital Improvement

Three Sections between 75 North to 965 North – (0.15 miles)

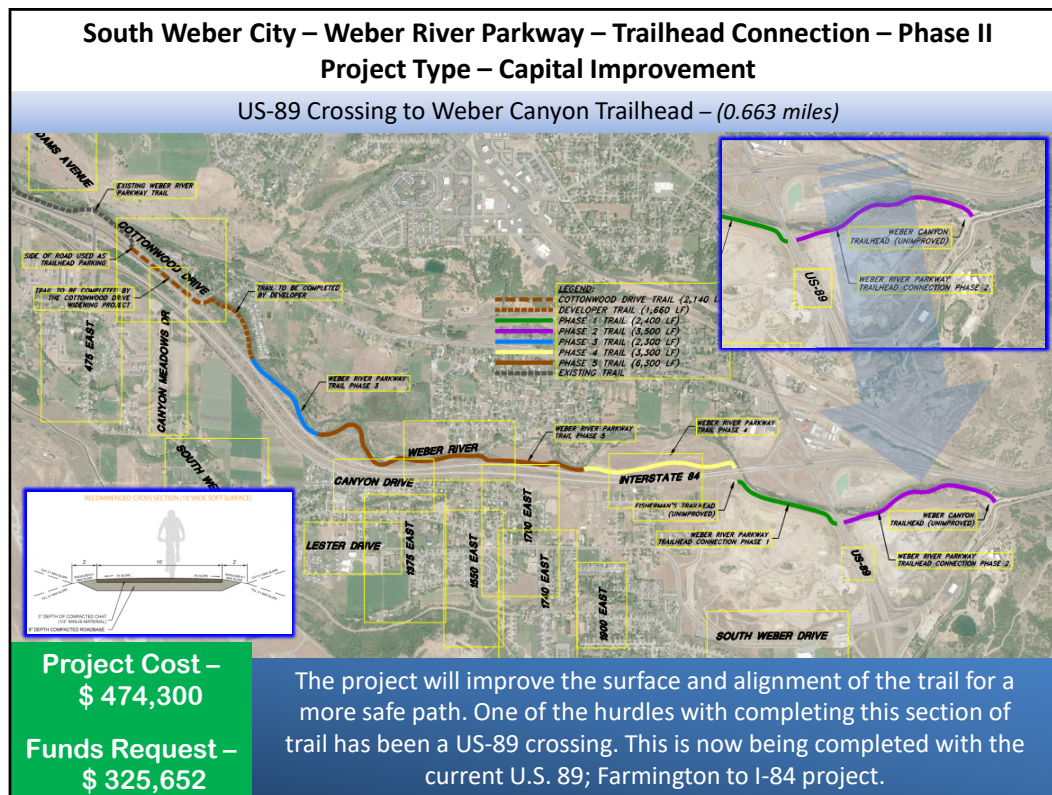


Project Cost –
\$ 283,300

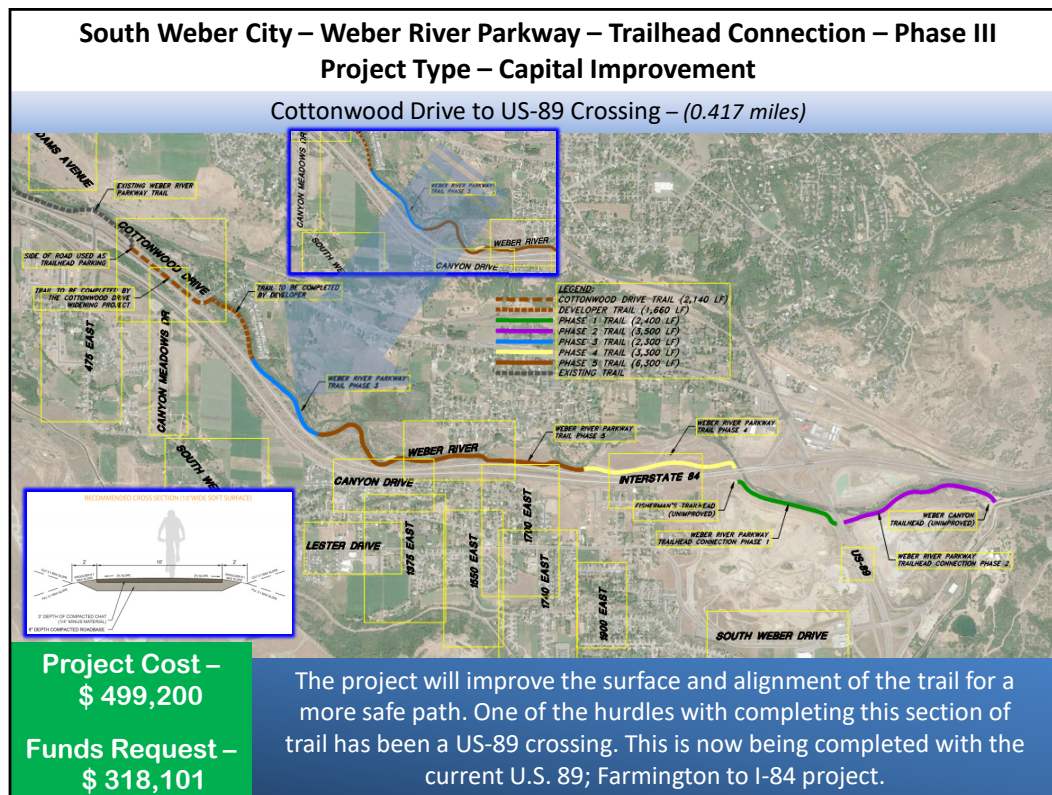
Funds Request –
\$ 226,640

Over the years, the City has installed an asphalt sidewalk on the west side of Redwood Road in pieces, or as development has occurred. There are three remaining properties that do not have sidewalk connections. When those connections are made, there will be an uninterrupted trail from the south city boundary to the north.

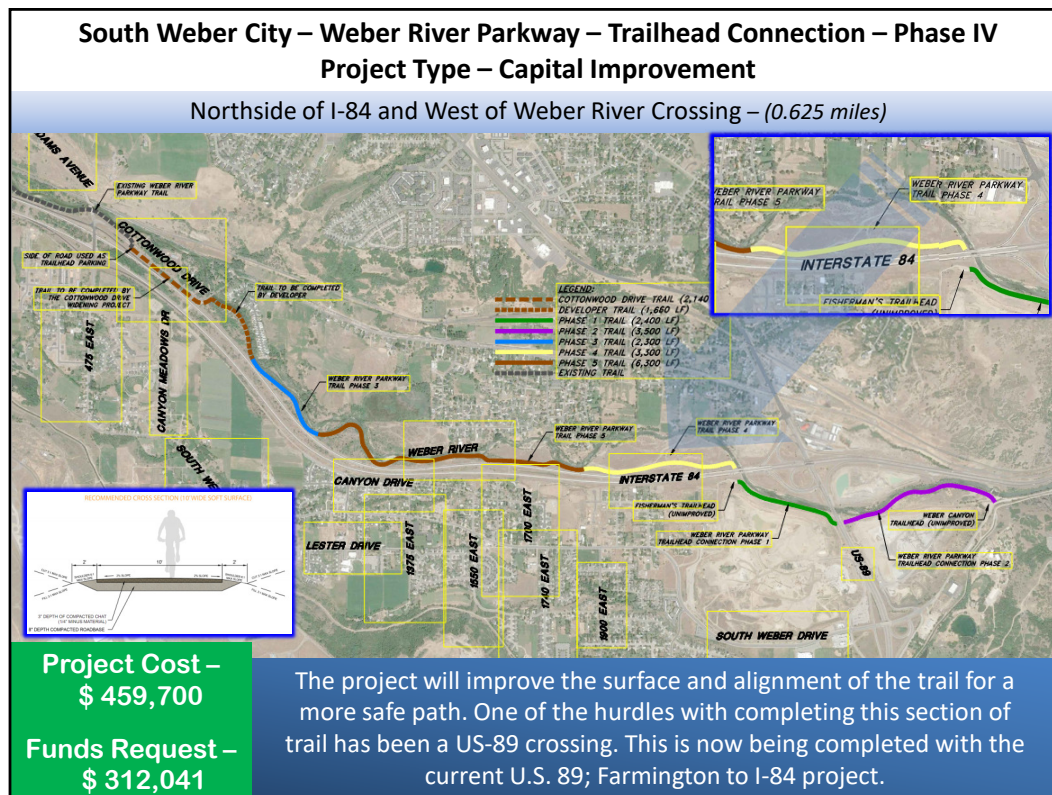
A recent surge in redevelopment has been observed on the west side of Redwood Rd. The City has required developers to install a multi-use path/sidewalk in addition to using other funding sources to complete connections along and near the Redwood Rd corridor. However, there are 3 sections of the path that will not redevelop soon, and those connections need to be completed in order to have a continuous path on Redwood Rd. This area includes the intersection of four different goals from Wasatch Choice 2050: Neighborhood Center (Foxboro Marketplace), Industrial Area, Active Transportation Lines, and Transit Projects. The City is extremely interested in achieving the objectives from the plan. There are multiple regional recreation facilities in the area that would benefit from pedestrian and cyclist connections to them: Legacy Park, Foxboro Wetlands, Legacy Trail, Jordan River Trail, and Porter's Landing Boat Takeout. There are also 4 charter schools one block away from the path.



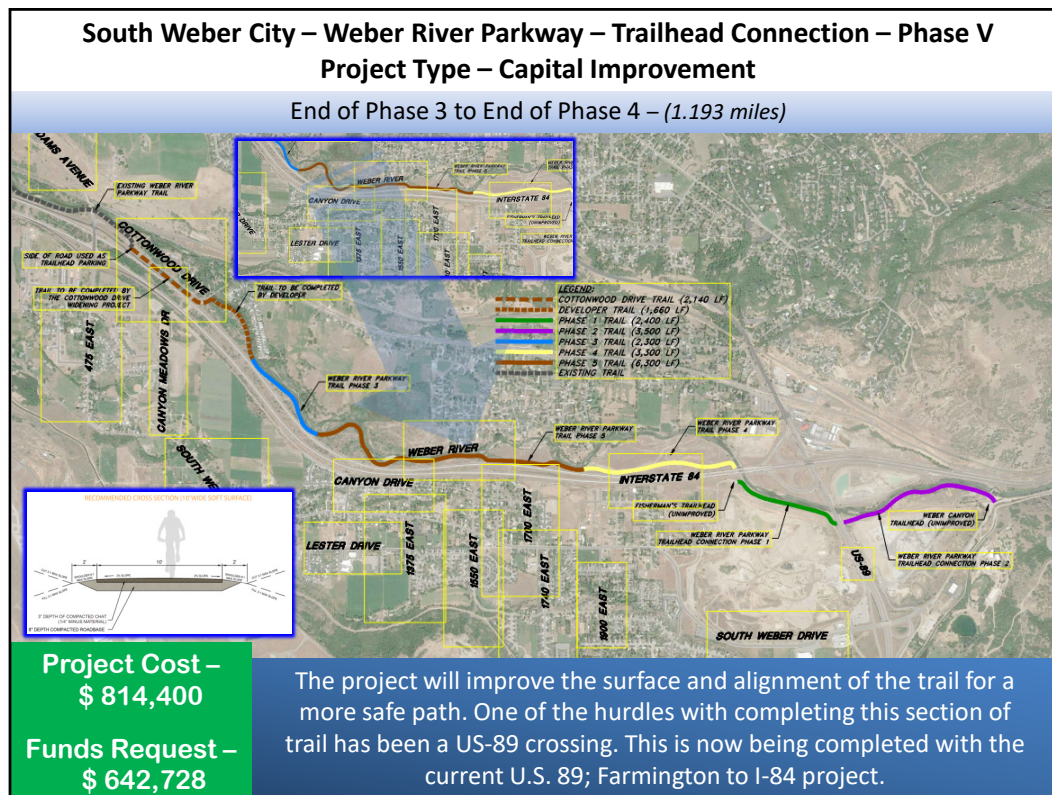
The project is an off-road facility away from motorized transportation, providing a pathway connecting two major north and south routes, Bonneville Shoreline Trail and the Denver & Rio Grande Western Rail Trail, going around the highly trafficked and busy Ogden area. The project also improves and connects the local and regional Transportation Alternative plans.



The project is an off-road facility away from motorized transportation, providing a pathway connecting two major north and south routes, Bonneville Shoreline Trail and the Denver & Rio Grande Western Rail Trail, going around the highly trafficked and busy Ogden area. The project also improves and connects the local and regional Transportation Alternative plans.



The project is an off-road facility away from motorized transportation, providing a pathway connecting two major north and south routes, Bonneville Shoreline Trail and the Denver & Rio Grande Western Rail Trail, going around the highly trafficked and busy Ogden area. The project also improves and connects the local and regional Transportation Alternative plans.



The project is an off-road facility away from motorized transportation, providing a pathway connecting two major north and south routes, Bonneville Shoreline Trail and the Denver & Rio Grande Western Rail Trail, going around the highly trafficked and busy Ogden area. The project also improves and connects the local and regional Transportation Alternative plans.

Plain City – 1500 North Sidewalk – Safe Routes to School

Project Type – Capital Improvement

4825 West to 4920 West – (0.18 miles)

Project Cost –
\$ 128,500

Funds Request –
\$ 102,800

The roadway is a narrow 2-lane facility with limited shoulders for pedestrians and bicyclist with an increasing about of pedestrian and vehicular traffic due to new development. Project would construct approximately 890 lineal feet of concrete sidewalk to eliminate a gap and provide a safe facility for school children and others.

It is in a developing area. An increasing umber of school children will require a safe way to access the local schools.