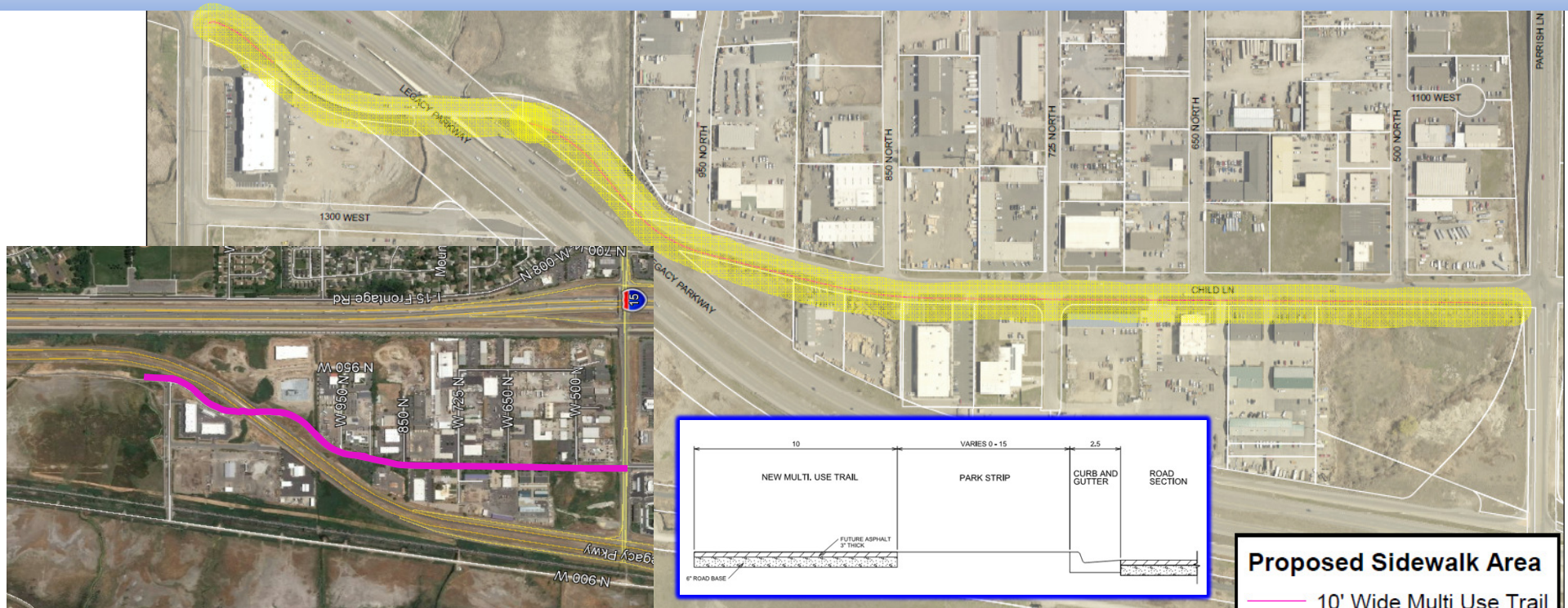


Centerville City – 1250 West – Multi-Use Trail

Project Type – Capital Improvement

Parrish Ln to 1275 North – (0.8 miles)



**Project Cost –
\$ 714,100**

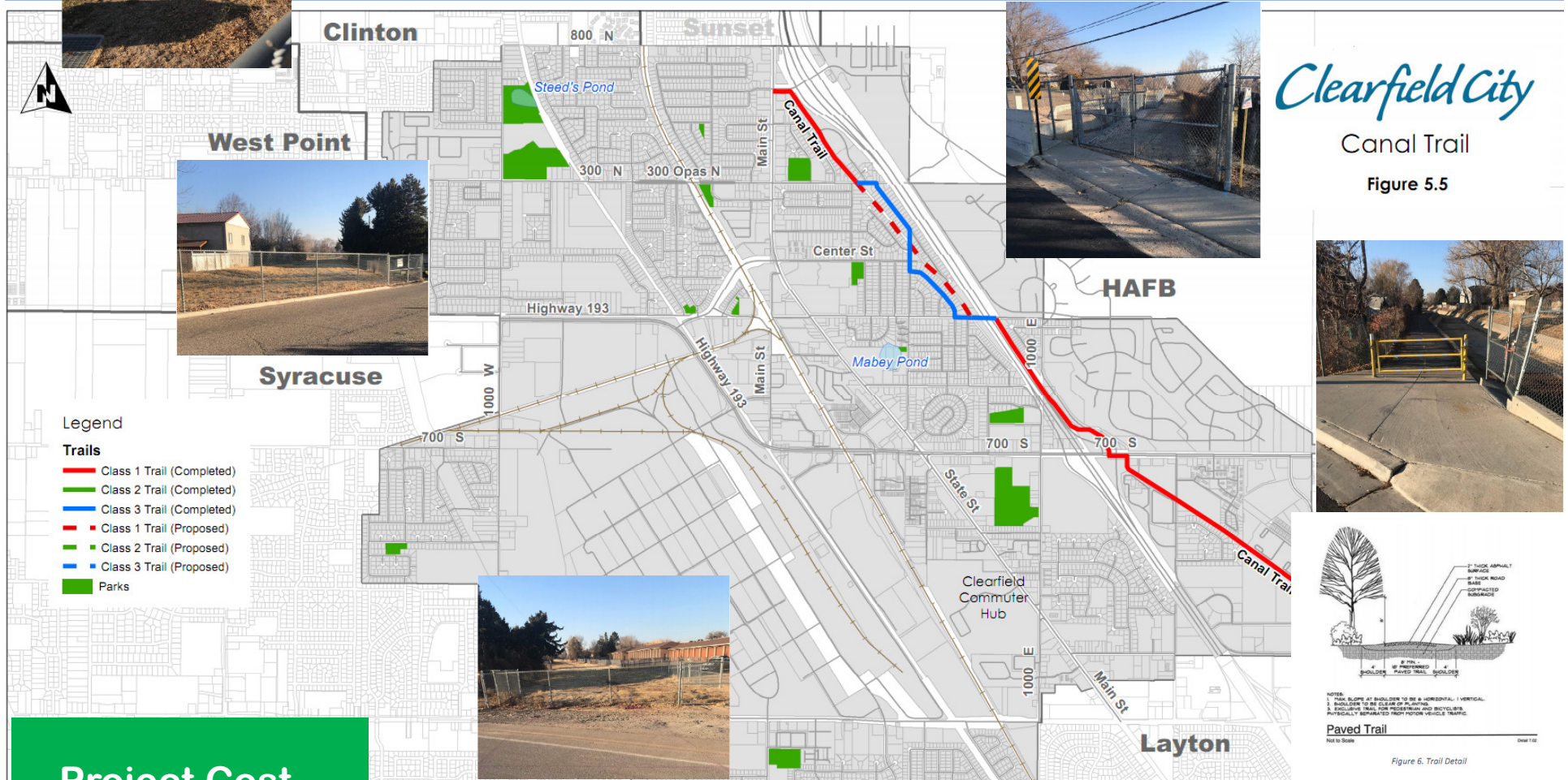
**Funds Request –
\$ 665,755**

This trail will complete the connection from the constructed ped/ bike bridge over I-15 and walkway along Parrish Lane with the walkway over the Legacy Bridge and over to the Legacy Trail system. The timing for this project is very good and there is much synergy at this time for this project as a development has recently been approved for the NW corner of 1250 West and Parrish Lane. The developer will be required to construct the multi-use trail along his frontage on 1250 West in the next year or two.

Clearfield City – Canal Trail – Multi-Use Trail

Project Type – Capital Improvement

200 South to 300 North – (0.64 miles)



**Project Cost –
\$ 145,500**

**Funds Request –
\$ 135,650**

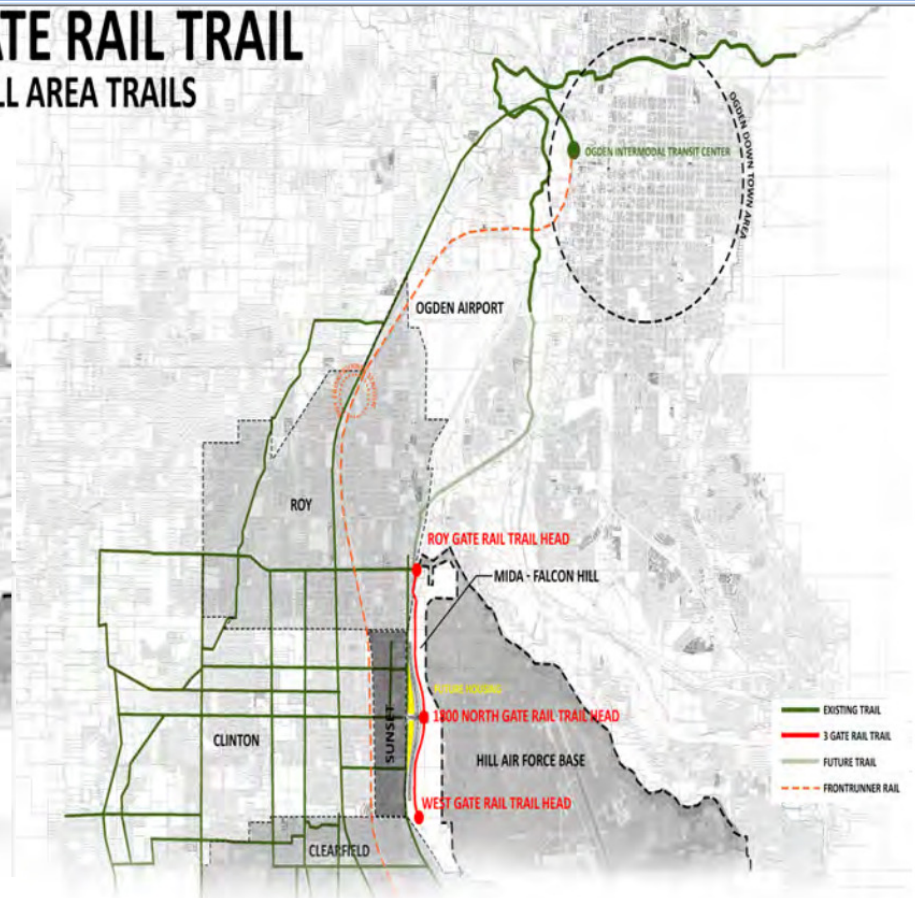
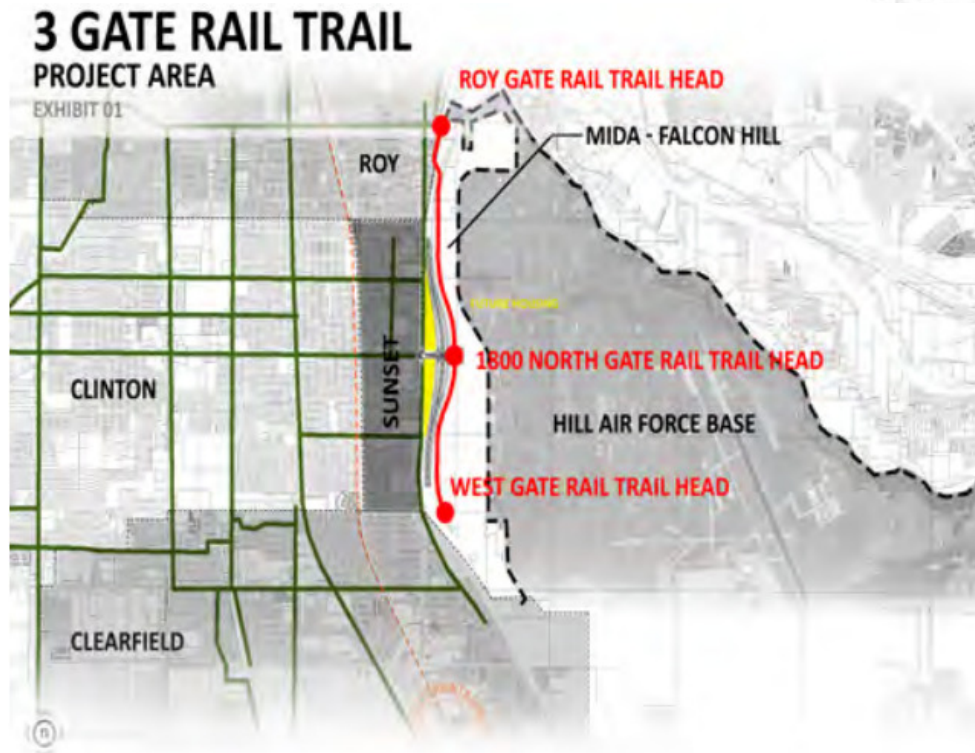
This project will complete a section of the Clearfield Canal Trail. Creating a 3 mile trail that is the only pedestrian trail that connects the neighborhoods of Layton, Clearfield, and Sunset to the schools, business, and city offices in Clearfield City.

Davis County – 3 – Gate Trail – Multi-Use Trail

Project Type – Capital Improvement

650 North (Clearfield) to 5850 South (Roy)– (2.8 miles)

3 GATE RAIL TRAIL OVERALL AREA TRAILS



**Project Cost –
\$ 8,875,354**

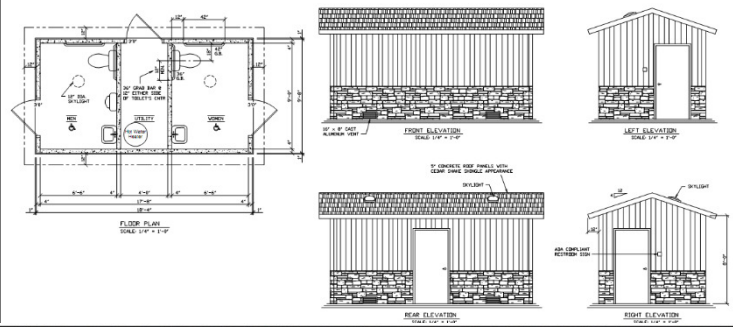
**Funds Request –
\$ 400,000**

MIDA is requesting funding to complete a design and planning phase for a commuter trail that will be integrated into the interchange, gate, and surrounding road infrastructure outside of, but adjacent to HAFB. This trail will connect 3 gates on the western side of HAFB directly into an active transportation path.

Kaysville City – Flint Street – Trailhead

Project Type – Capital Improvement

Web Lane to Old Mill Lane – (0.23 miles)



Project Cost –
\$ 275,800

Funds Request –
\$ 194,040

A parking lot and right of way improvements to create a trailhead at the D&RGW rail trail in Kaysville City. Kaysville City will also install a restroom facility, benches, and drinking fountain improvements as part of the city's contribution to the project.

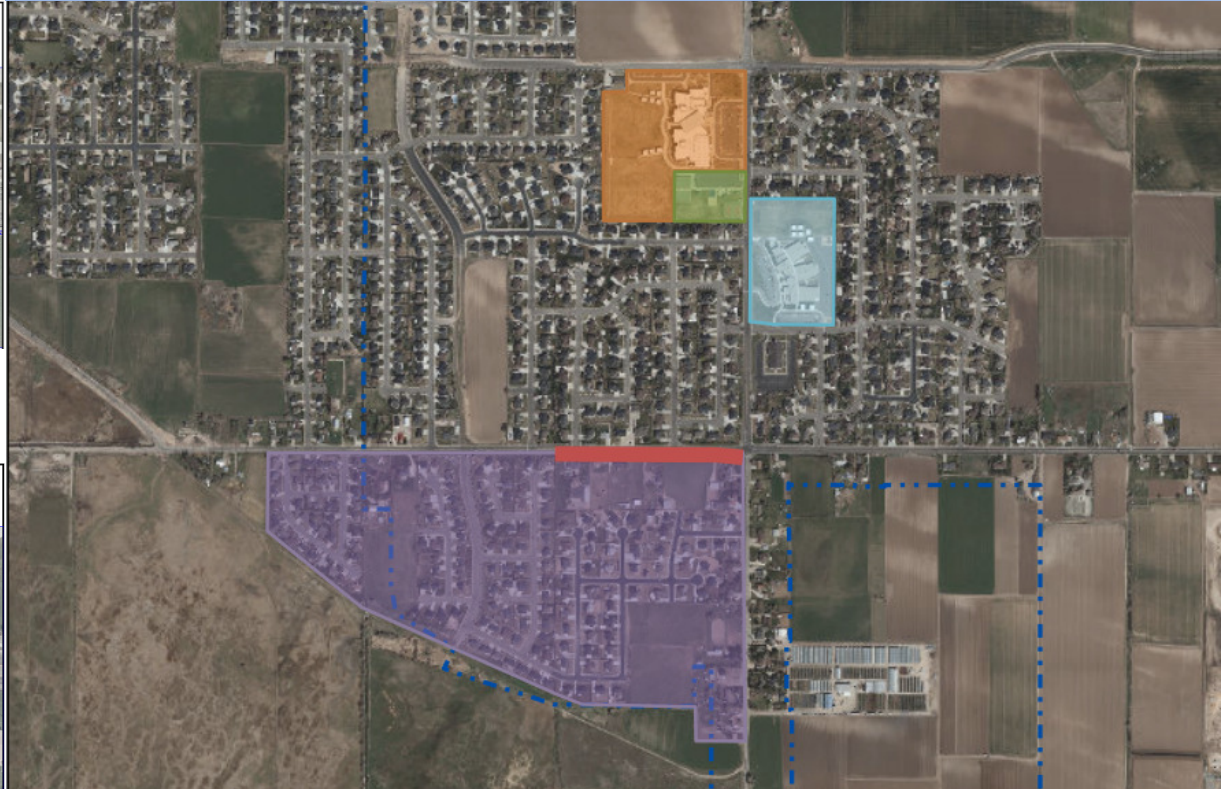
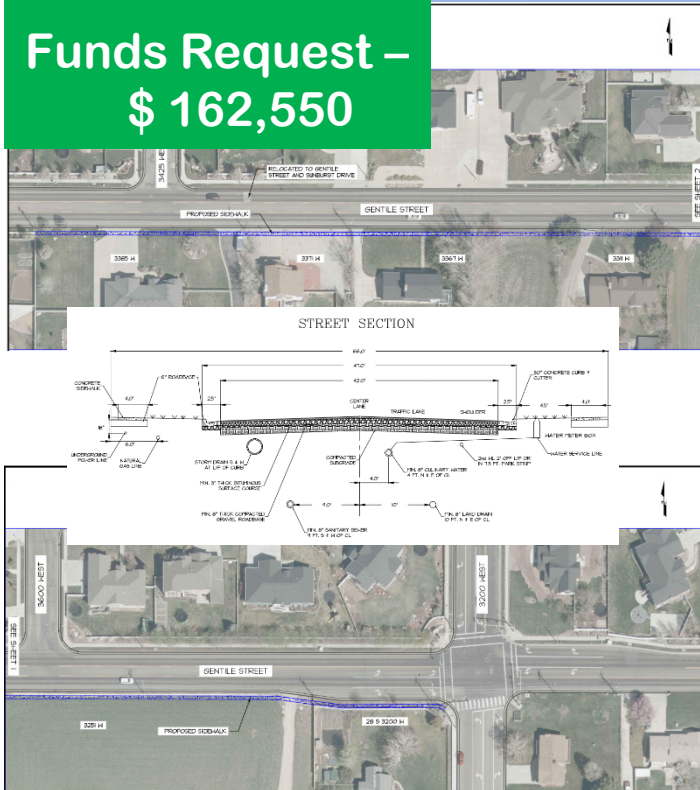
Layton City – Gentile Street – Safe Routes to School

Project Type – Capital Improvement

**Project Cost –
\$ 174,800**

**Funds Request –
\$ 162,550**

3475 West to 3200 West – (0.25 miles)



There was a recent change to the school boundary lines and the mid-block crosswalk, crossing guard, and reduced speed zone signs that were located at 3475 W and Gentile were relocated to serve the new elementary school. This path is indicated as a SRTS for Legacy Jr. High and the removal of the crosswalk eliminates a path for the elementary and Jr. high students. Students continue to cross Gentile to access the sidewalk on the north side; currently the path on the south side of Gentile is uneven and there are obstructions on the path that force the students to walk on the street.

Layton City – Rainbow Drive – Safe Routes to School

Project Type – Capital Improvement

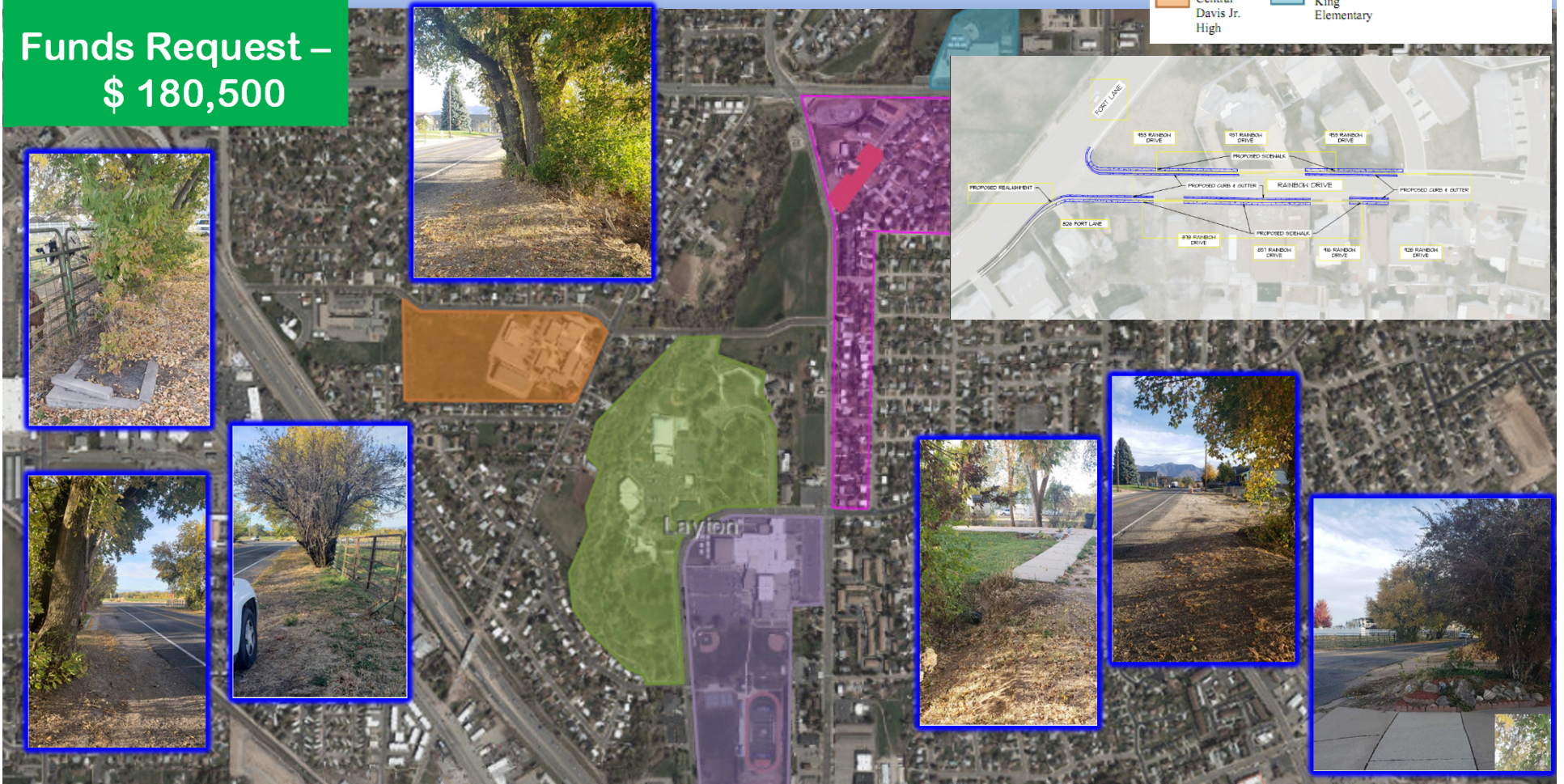
Fort Lane to Gordon Avenue – (0.1 mile)

Project Cost –
\$ 194,000

Funds Request –
\$ 180,500

10/21/2020, 3:30:20 PM

Proposed Sidewalk
Areas
Central Davis Jr. High
Commons Park
Layton High
King Elementary
Municipal Boundary
Impacted Area

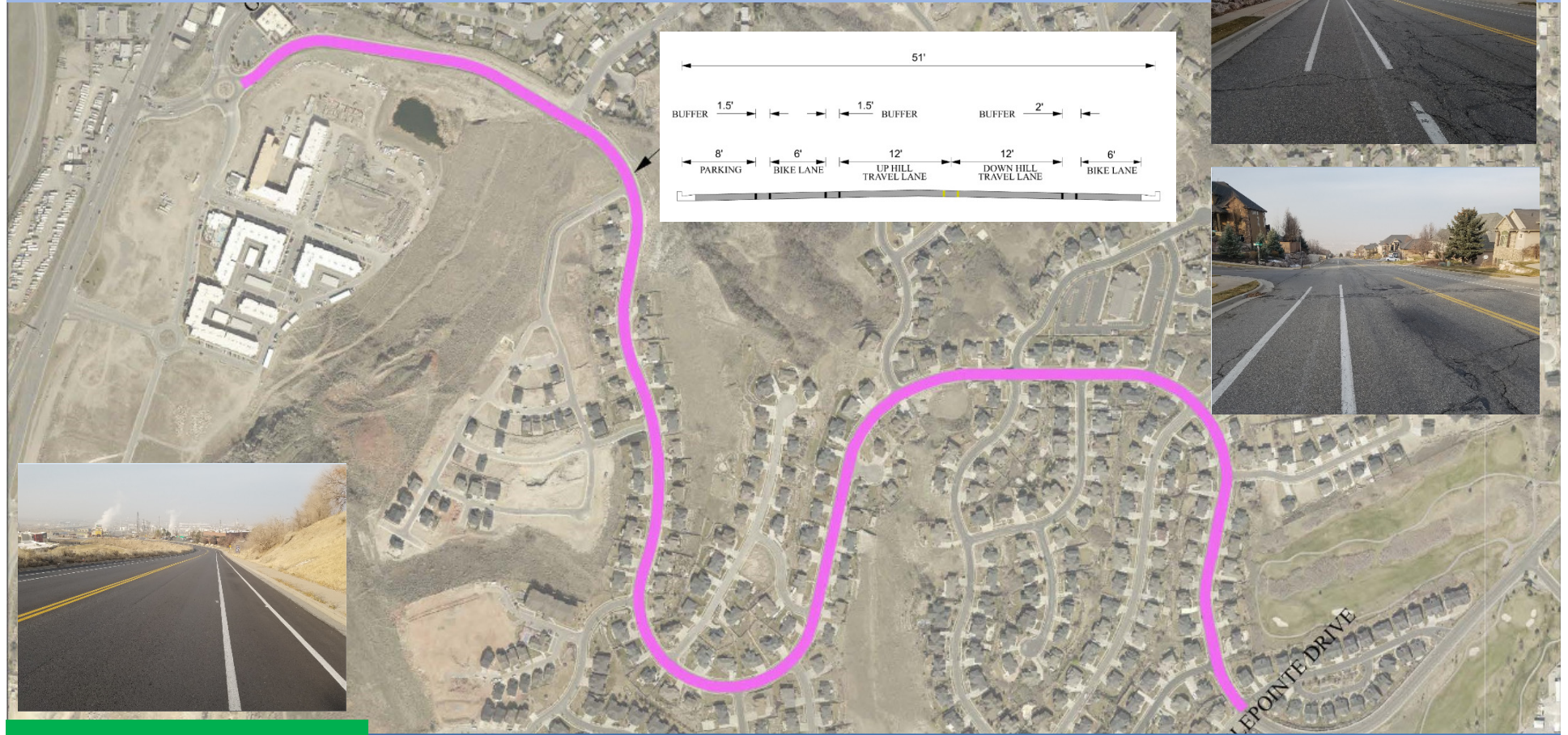


This project includes the construction of 850 feet of sidewalk on Rainbow Drive and includes curb, gutter, the relocation of irrigation structures to accommodate the new sidewalk, and the widening of a portion of the road. The proposed improvements would provide a continuous and safe path for both students and pedestrians.

North Salt Lake – Eagleridge Drive – Buffered Bike Lane

Project Type – Capital Improvement

Orchard Drive to Eaglepointe Drive – (1.61 miles)



Project Cost –
\$ 133,600

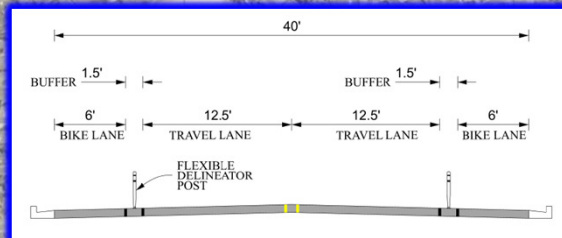
Funds Request –
\$ 119,894

The City would like to increase the safety and comfort of the bike lanes on Eagleridge Drive. This year, the City worked jointly with Bountiful and Centerville cities to adopt an Active Transportation Plan, and Eagleridge Drive was identified as the first priority facility in that plan, needing a buffered bike lane.

North Salt Lake – Orchard Drive – Separated Bike Lane

Project Type – Capital Improvement

Eagleridge Drive to 3211 South – (1.5 miles)



Project Cost –
\$ 323,500

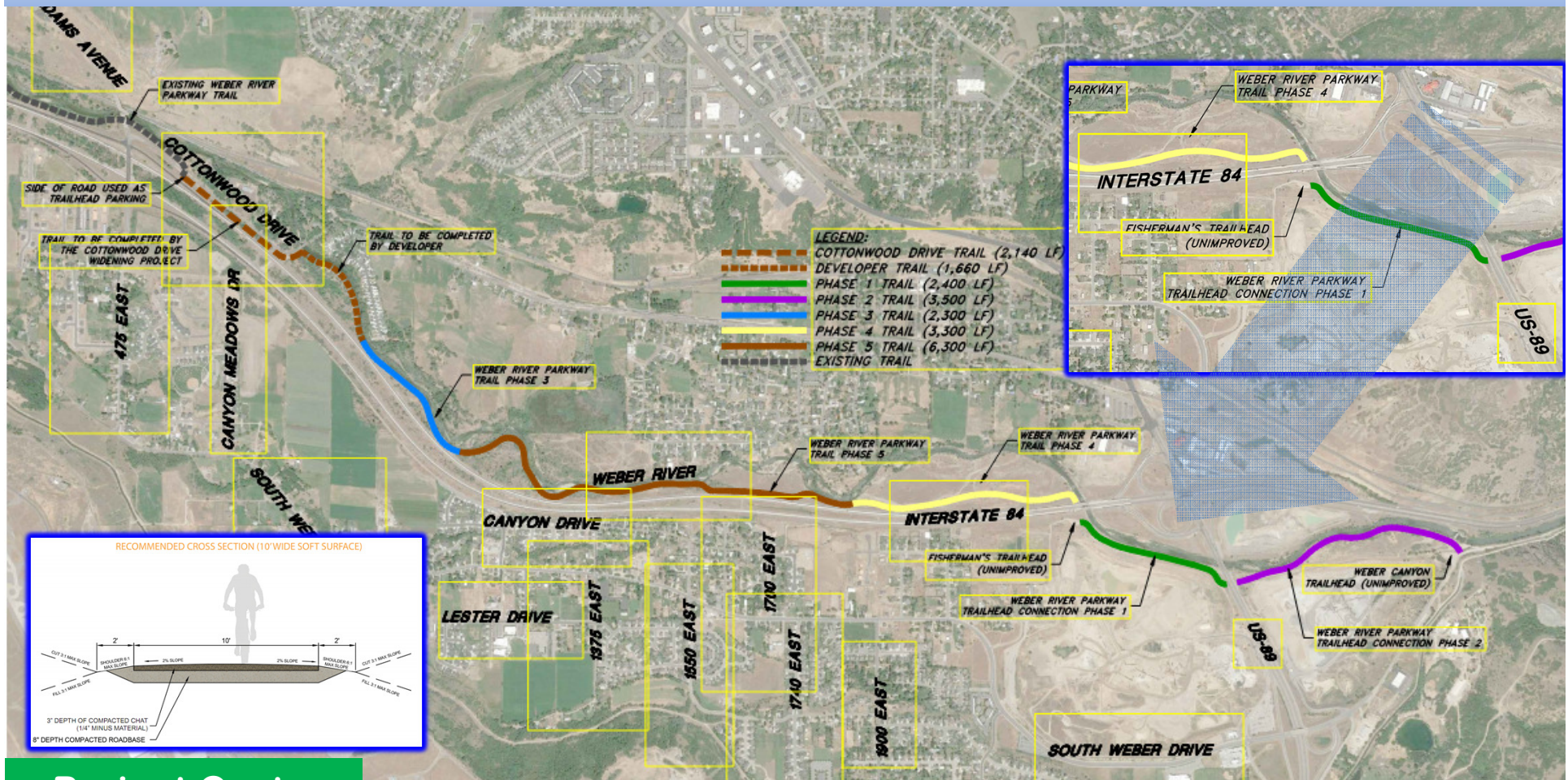
Funds Request –
\$ 296,938

The City would like to increase the safety and comfort of the bike lanes on Orchard Drive. This year, the City worked jointly with Bountiful and Centerville cities to adopt an Active Transportation Plan, and Orchard Drive was identified as needing a separated bike lane, based on best practices and public input.

South Weber City – Weber River Parkway – Trailhead Connection – Phase 1

Project Type – Capital Improvement

Fisherman's Trailhead to US-89 Crossing – (0.455 miles)



**Project Cost –
\$ 383,700**

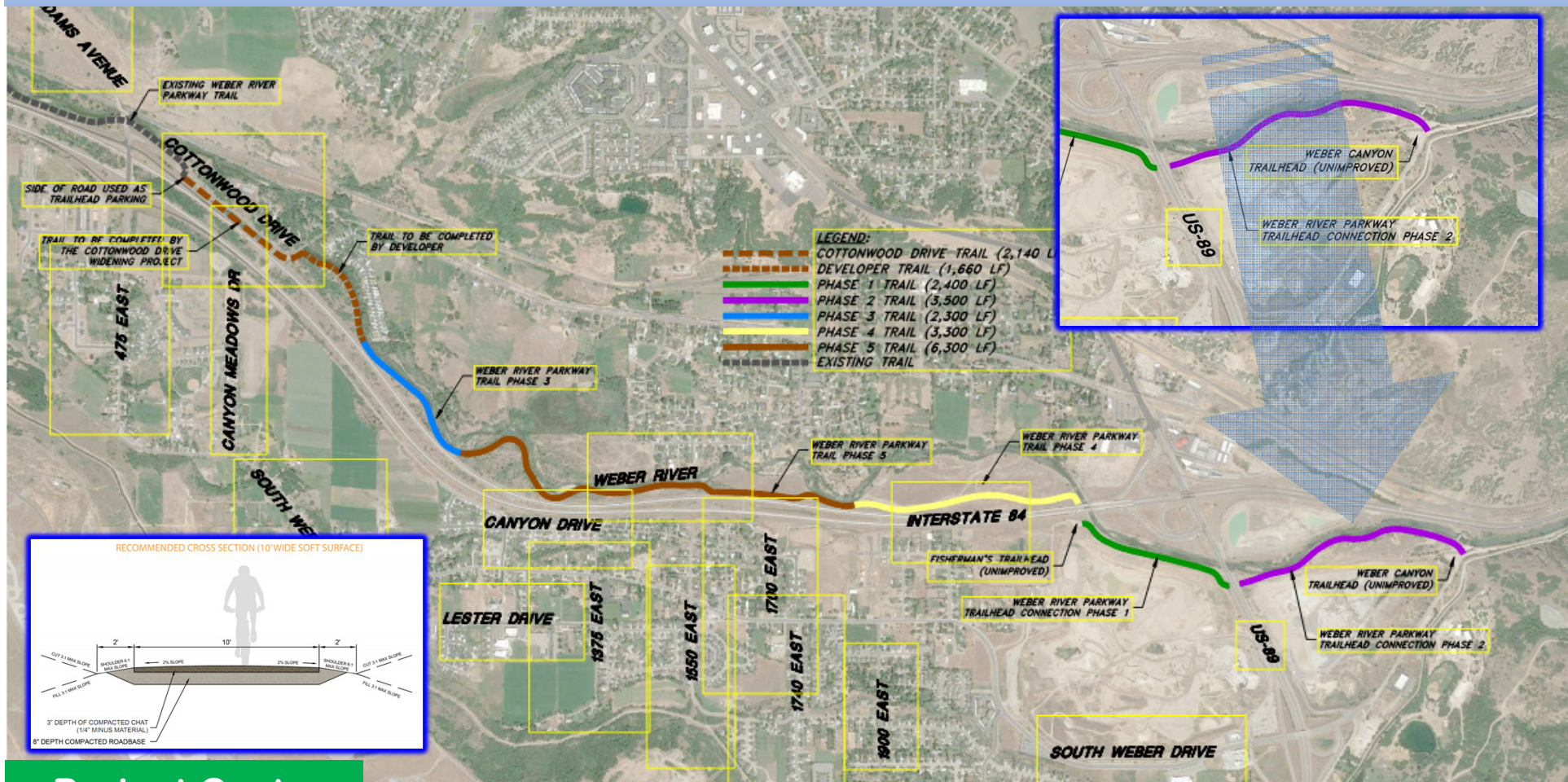
**Funds Request –
\$ 241,186**

The project will improve the surface and alignment of the trail for a more safe path. One of the hurdles with completing this section of trail has been a US-89 crossing. This is now being completed with the current U.S. 89; Farmington to I-84 project.

South Weber City – Weber River Parkway – Trailhead Connection – Phase II

Project Type – Capital Improvement

US-89 Crossing to Weber Canyon Trailhead – (0.663 miles)



**Project Cost –
\$ 444,100**

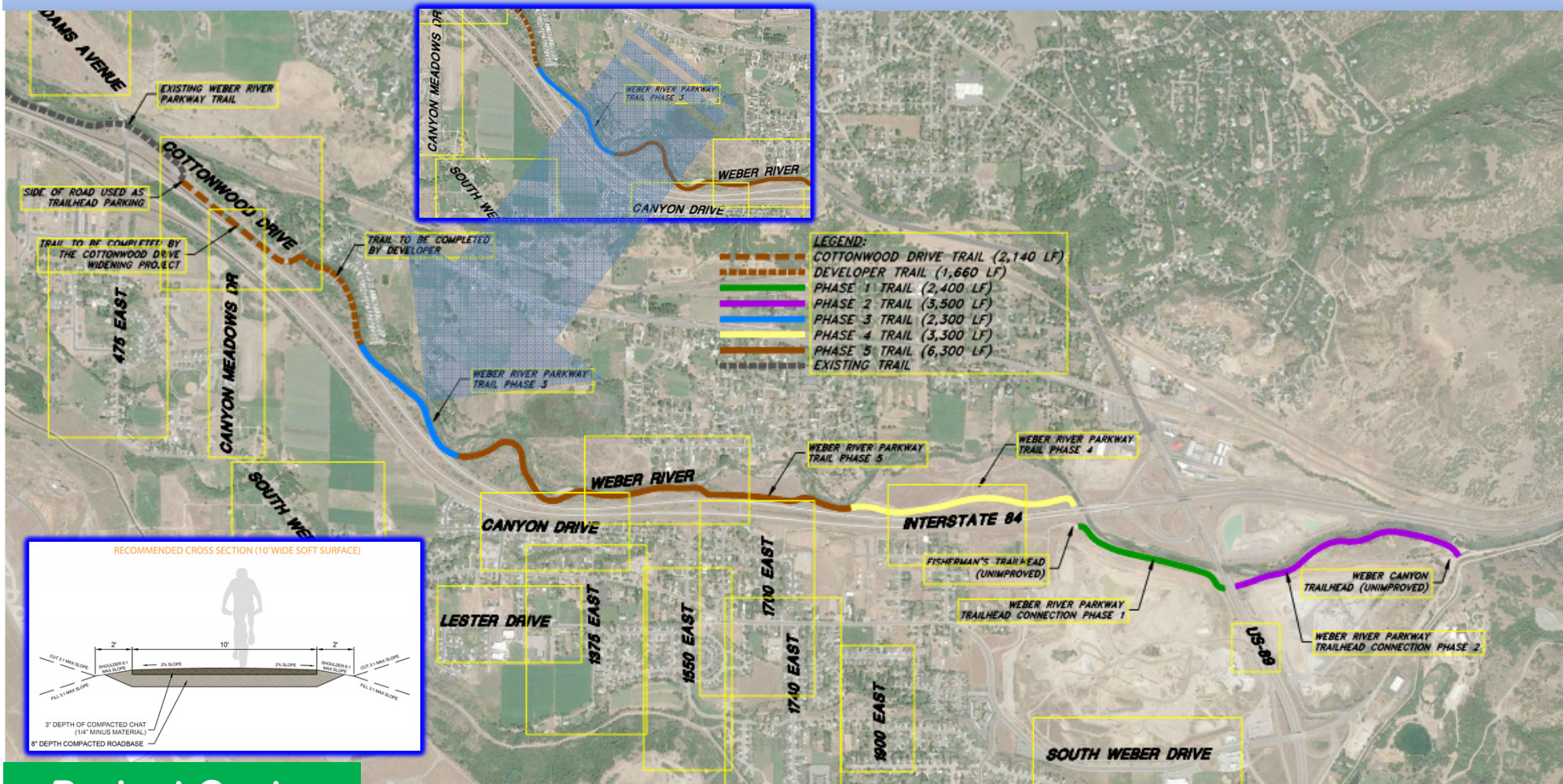
**Funds Request –
\$ 297,497**

The project will improve the surface and alignment of the trail for a more safe path. One of the hurdles with completing this section of trail has been a US-89 crossing. This is now being completed with the current U.S. 89; Farmington to I-84 project.

South Weber City – Weber River Parkway – Trailhead Connection – Phase III

Project Type – Capital Improvement

Cottonwood Drive to US-89 Crossing – (0.417 miles)



**Project Cost –
\$ 457,000**

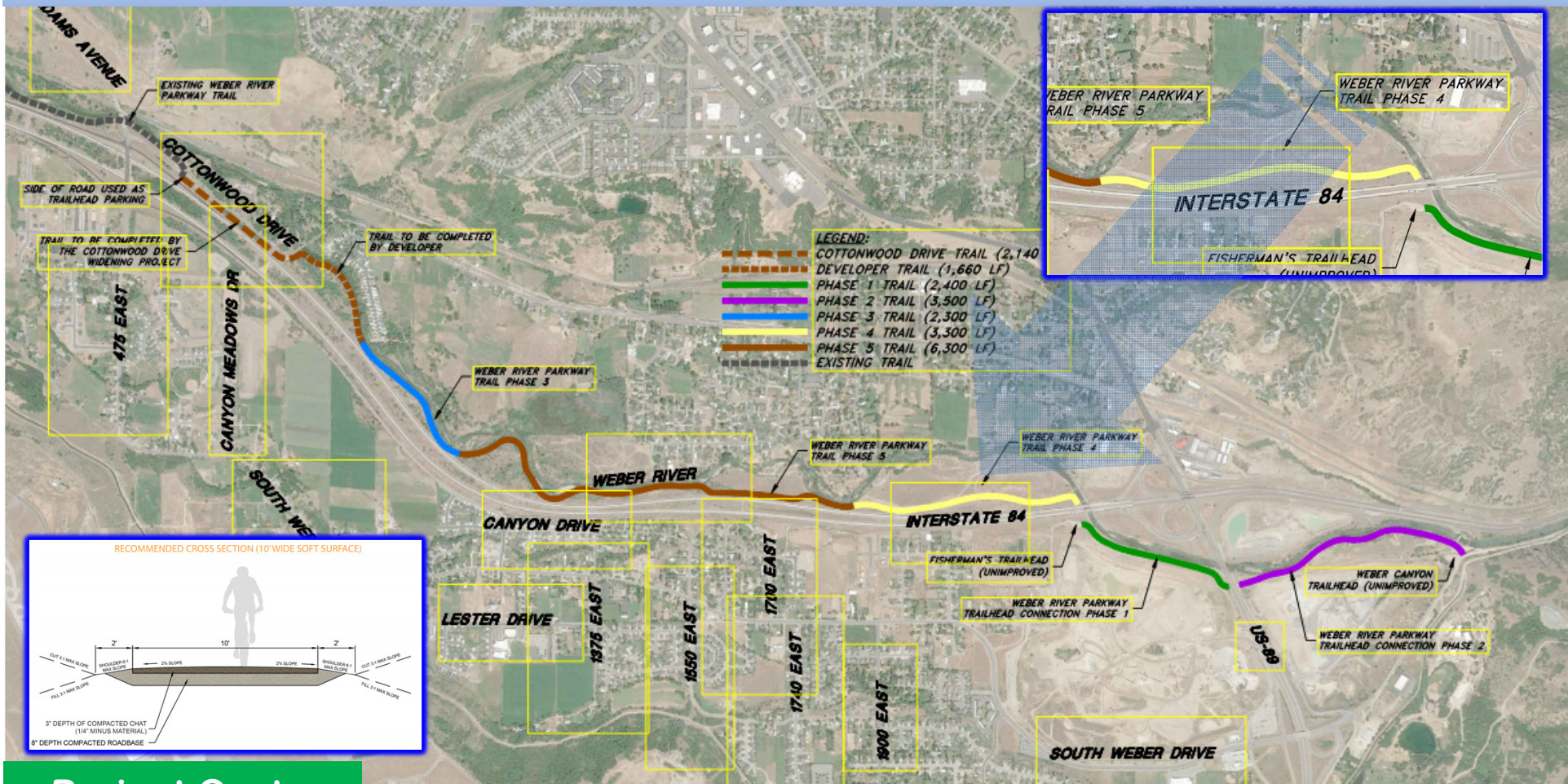
**Funds Request –
\$ 309,524**

The project will improve the surface and alignment of the trail for a more safe path. One of the hurdles with completing this section of trail has been a US-89 crossing. This is now being completed with the current U.S. 89; Farmington to I-84 project.

South Weber City – Weber River Parkway – Trailhead Connection – Phase IV

Project Type – Capital Improvement

Northside of I-84 and West of Weber River Crossing – (0.625 miles)



**Project Cost –
\$ 438,300**

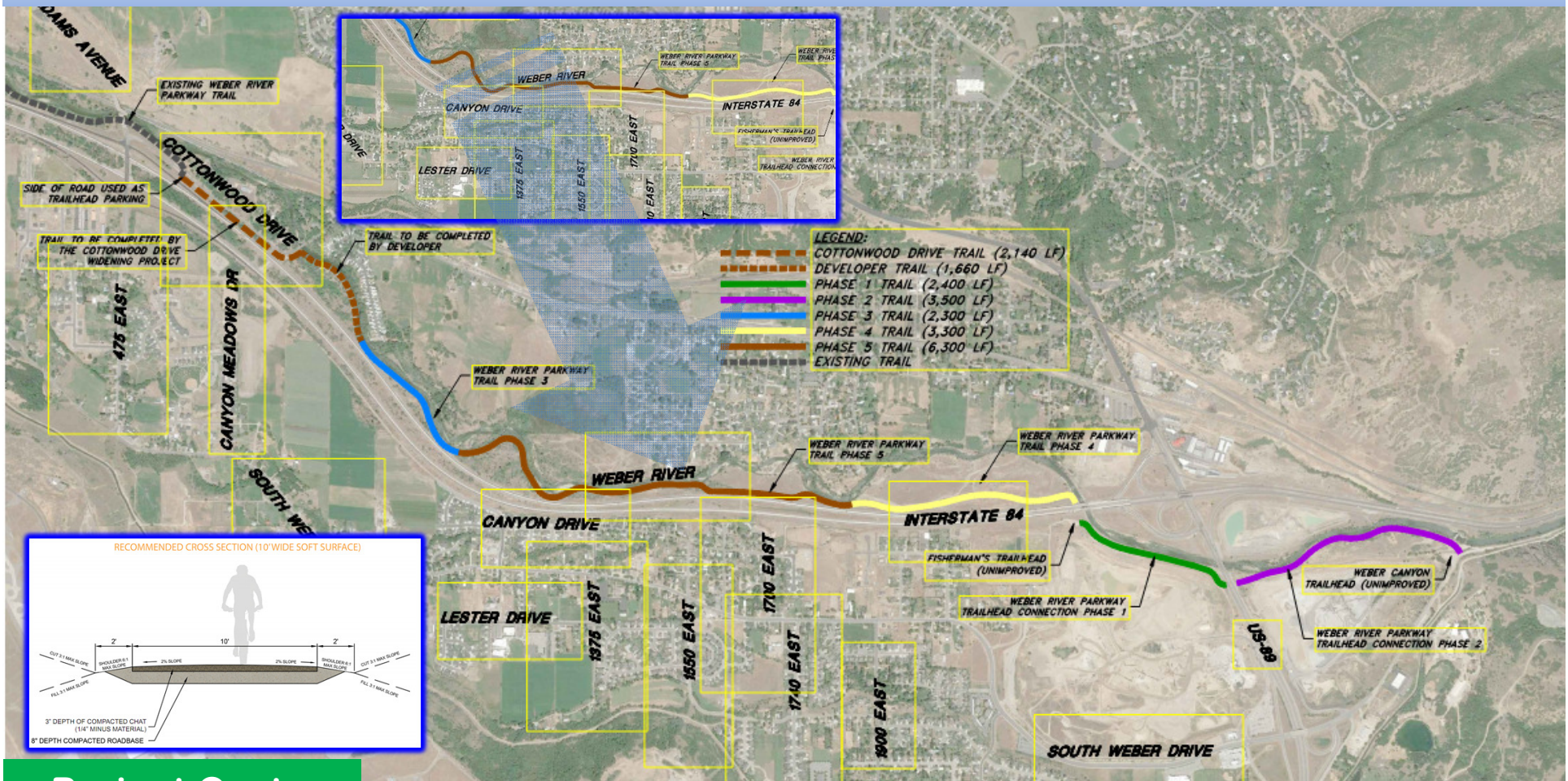
**Funds Request –
\$ 292,090**

The project will improve the surface and alignment of the trail for a more safe path. One of the hurdles with completing this section of trail has been a US-89 crossing. This is now being completed with the current U.S. 89; Farmington to I-84 project.

South Weber City – Weber River Parkway – Trailhead Connection – Phase V

Project Type – Capital Improvement

End of Phase 3 to End of Phase 5 – (1.193 miles)



**Project Cost –
\$ 829,700**

**Funds Request –
\$ 656,992**

The project will improve the surface and alignment of the trail for a more safe path. One of the hurdles with completing this section of trail has been a US-89 crossing. This is now being completed with the current U.S. 89; Farmington to I-84 project.

West Bountiful City – 1100 West – Sidewalk and Bicycle Lane

Project Type – Capital Improvement

200 North to 400 North – (0.15 miles)



- KEY**
1. NEW
 2. NEW
 3. NEW
 4. NEW
 5. NEW
 6. EXIST
 7. EXIST
 8. RENO
 9. RENO
 10. RENO
 11. CONN
 12. VEHICLE TRAVEL LANE
 13. REMOVE TRIPPLER DRIVEWAY



**Project Cost –
\$ 547,300**

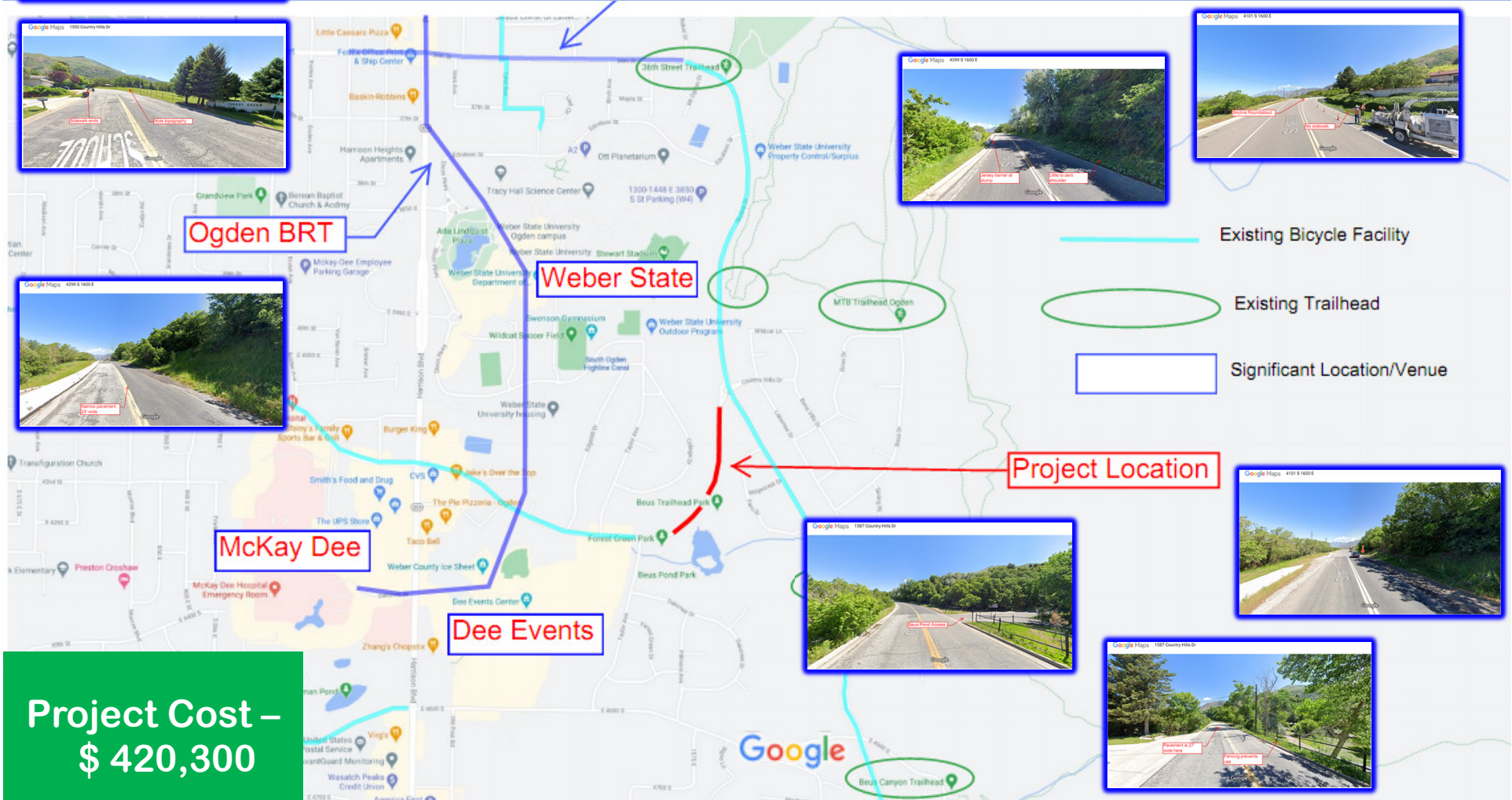
**Funds Request –
\$ 493,466**

Completes an alternative transportation route to the Woods Cross Frontrunner Station. The city and the refinery have already invested significantly by installing approximately 0.5 miles of new sidewalk and asphalt, and this project completes the final 0.15 miles of infrastructure.

Ogden City – Country Hills Drive – Shared Use Path

Project Type – Capital Improvement

Taylor Avenue to Skyline Drive Roundabout – (0.3 miles)



**Project Cost –
\$ 420,300**

**Funds
Request –
\$ 391,846**

Project will connect Country Hills (west) to Skyline (east) with a much needed pedestrian corridor in an area where motorists, cyclists, and pedestrians are in close proximity to parks, trailheads, and existing bicycle facilities

Plain City – 2200 North – Sidewalk Project Type – Capital Improvement

4100 West to 4650 West – (0.152 miles)



**Project Cost –
\$ 137,542**

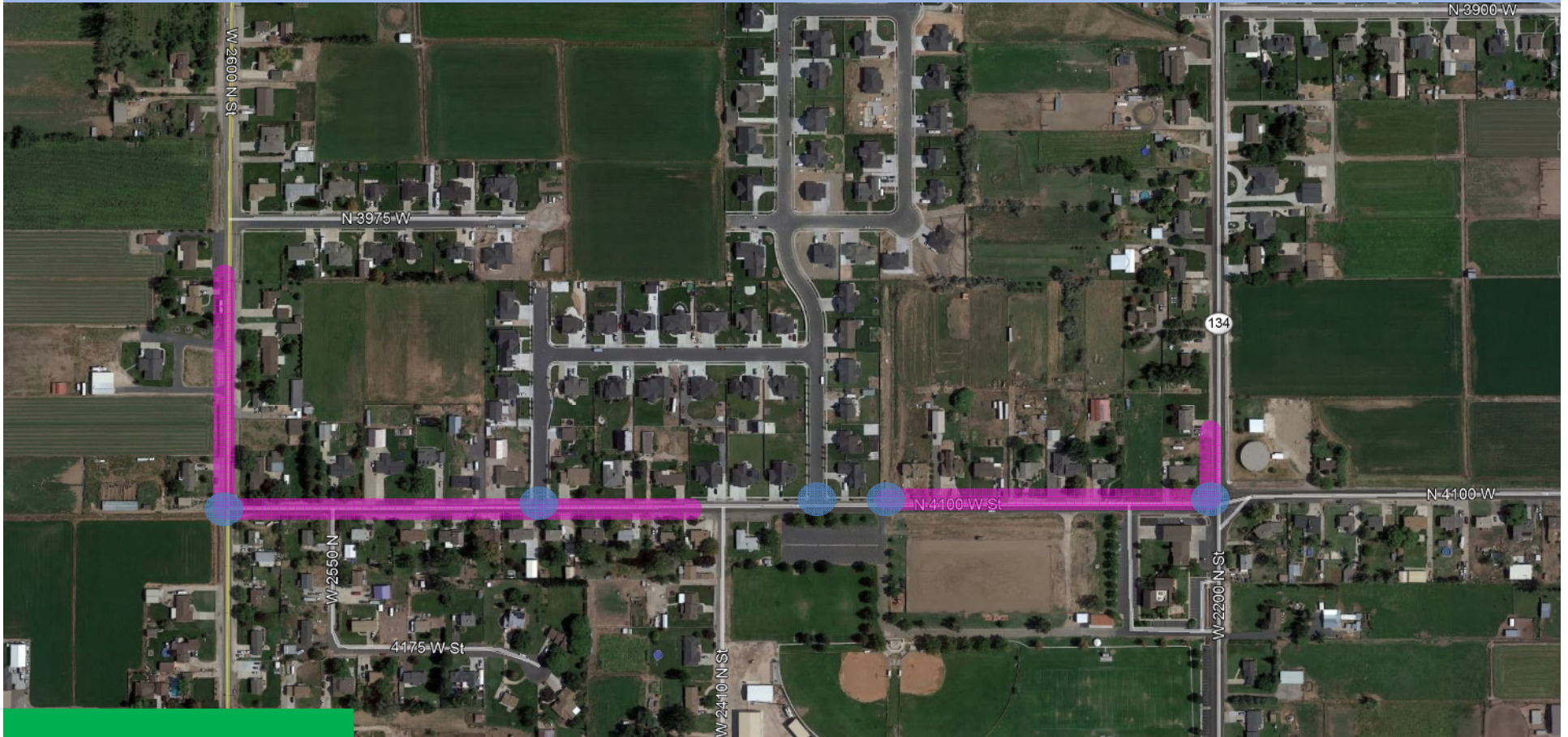
**Funds Request –
\$ 128,230**

Construct 780' of sidewalk along the north side of 2200 North to complete existing sidewalk along the stretch from Lee Olsen Park 4100 West to 4650 West and install a ped crossing at 4625 Wests with LED solar flashing lights, so pedestrians and school kids can cross 2200 North safely, at 4625 West the sidewalk would be installed on the south side of the road to join up with existing sidewalk on 4650 West

Plain City – 4100 West – Walking / Bike Path Crosswalk

Project Type – Capital Improvement

2200 North to 2600 North – (0.33 miles)



Project Cost –
\$ 177,228

Funds Request –
\$ 165,230

Project will construct 1750' of sidewalk along the east side of 4100 West to complete existing sidewalk along the stretch from 2200 North to 2600 North and install a ped crossing at 2340 North with LED solar push button flashing lights, so pedestrians can cross the street safely to get over to the Lee Olsen Park.

Roy City – 4000 South – Pedestrian Rail Crossing

Project Type – Safe Routes to School

2550 West to 2350 West – (0.12 miles)

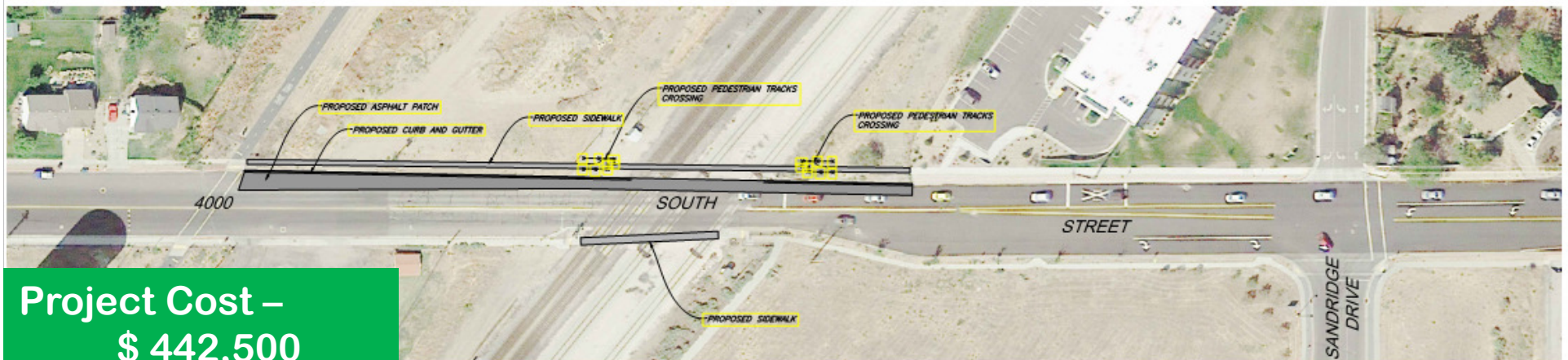
SCALE: 1" = 80'
40 0 10 40
SCALE IN FEET



SOUTH SIDE OF 6000 SOUTH CROSSING THE TRACKS



NORTH SIDE OF 4000 SOUTH









Project Cost –
\$ 442,500

Funds Request –
\$ 412,543

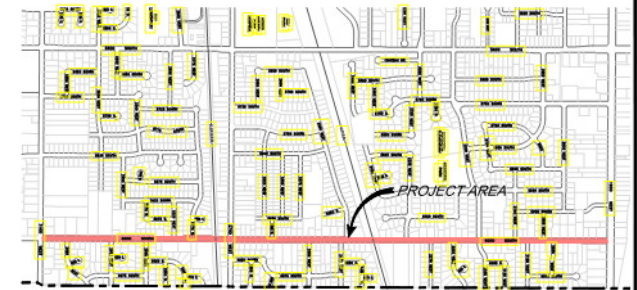
The 4000 South Pedestrian Rail Crossing project will include the construction of an at-grade pedestrian rail crossing and the necessary curb, gutter, and sidewalk to connect the sidewalk to the east and west of the trail.

Roy City – 6000 South – Curb, Gutter, and Sidewalk

Project Type – Safe Routes to School

LEGEND	DESCRIPTION	REQUESTED FUNDS	LOCAL COMMITMENT	TOTAL COST
 PHASE 1	CURB, GUTTER, AND SIDEWALK	\$205,665.00	\$14,935.00	\$220,600.00
 PHASE 2	CURB, GUTTER, AND SIDEWALK	\$185,155.00	\$13,445.00	\$198,600.00
 PHASE 3	CURB, GUTTER, AND SIDEWALK	\$277,825.00	\$20,175.00	\$298,000.00
 PHASE 4	SIDEWALK ONLY	\$84,373.00	\$6,127.00	\$90,500.00
 PHASE 5	SIDEWALK ONLY	\$114,766.00	\$8,334.00	\$123,100.00
 PHASE 6	SIDEWALK ONLY	\$85,305.00	\$6,195.00	\$91,500.00
	TOTAL	\$953,089.00	\$69,211.00	\$1,022,300.00

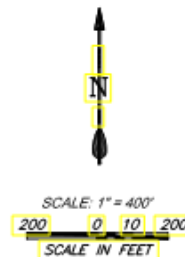
3100 West to 1900 West – (3 miles)



VICINITY MAP



SIDEWALK ONLY



Project Cost –
\$ 1,022,300
Funds Request –
btwn **\$ 205,655**
& \$ 84,373

The 6000 South Curb, Gutter, and Sidewalk project will include the construction of curb, gutter, and sidewalk along 6000 South between 3100 West and 1900 West. The proposed project will fill in the gaps where the curb, gutter, and sidewalk are missing.