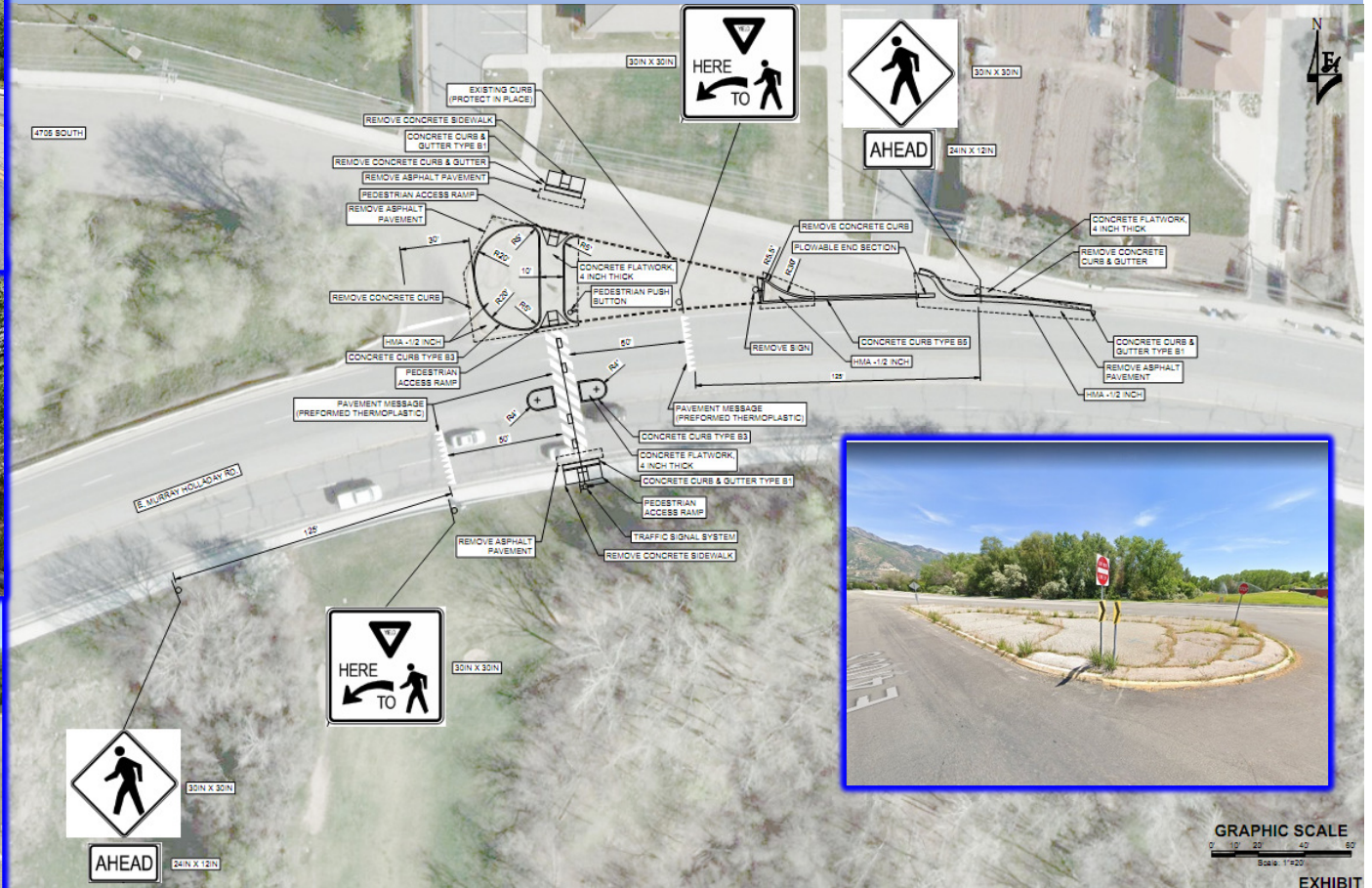


# Holladay\ Millcreek – Murray-Holladay Road – Pedestrian Crossing

## Project Type – Capital Improvement

STP & TAP

Murray Holladay Road and 4705 South – (0.04 miles)



**Project Cost –**  
**\$ 417,200**  
**Funds Request –**  
**\$ 388,956**

Realigning Murray Holladay Road at 4705 South to a T-intersection and adding a new full traffic stop pedestrian crossing will improve safe routes to school; enhance access to the Mt Olympus Senior Center, Creekside Park, Holladay Lions Recreational Center, and Big Cottonwood Park; and improve transit connections.

EXHIBIT



# Cottonwood Heights – 1700 East – Missing Sidewalk Project Type – Safe Routes to School

6964 South to 7190 South – (0.21 miles)

## 1700 EAST SIDEWALK PROJECT



**Project Cost –  
\$ 441,100**

**Funds Request –  
\$ 411,238**

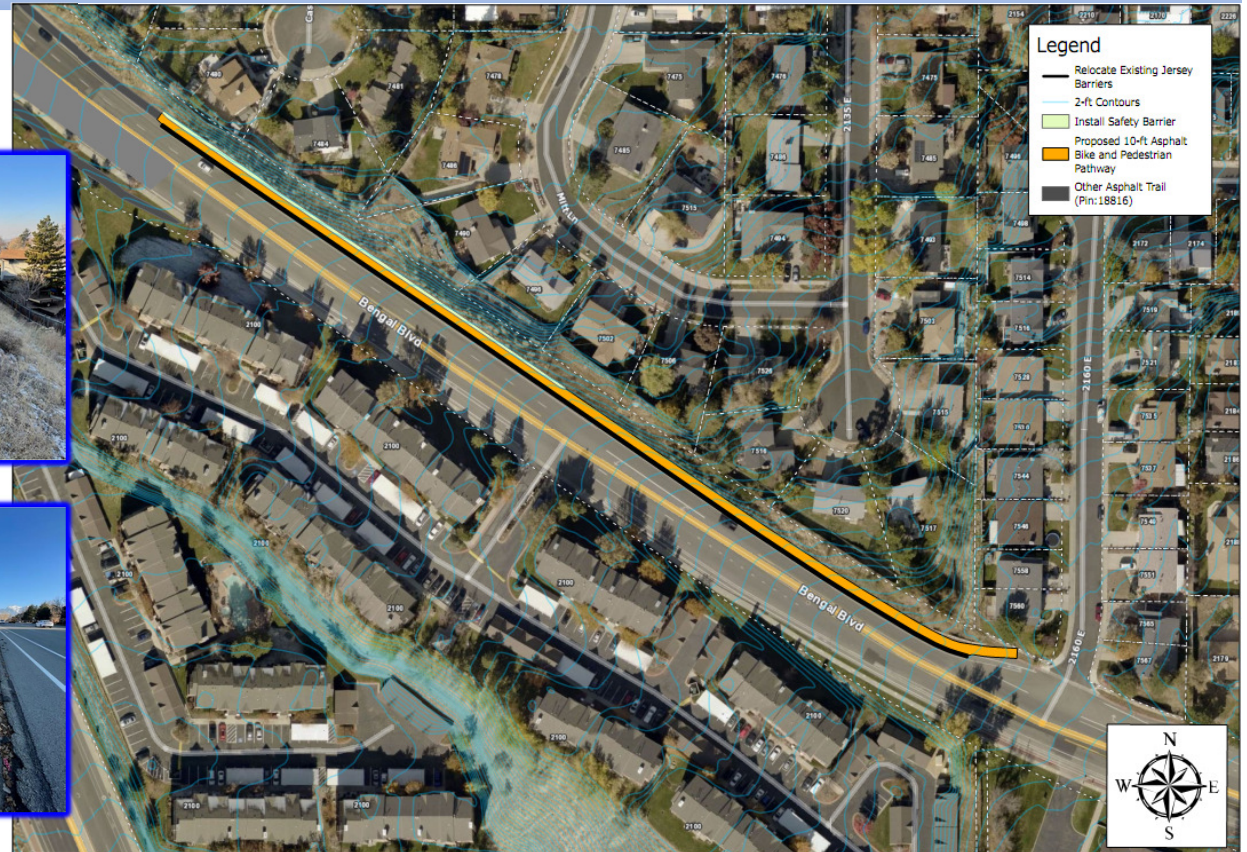
The proposed project includes installation of sidewalk along the west side of 1700 East to fill in sidewalk gaps between 7200 South and Fort Union Blvd. This project is necessary to prevent students from crossing in dangerous locations, specifically near Fort Union Blvd where cars frequently exceed the speed limit.



# Cottonwood Heights – Bengal Boulevard – Bike & Pedestrian Walkway

## Project Type – Capital Improvement

Highland Drive to 2680 East – (0.19 miles)



**Project Cost –  
\$ 487,200**

**Funds Request –  
\$ 444,894**

This project represents a major opportunity for active transportation in Cottonwood Heights. Despite being a major thoroughfare, Bengal Blvd's current condition does little to incentivize walking or cycling.

This 10-foot shared-use path will provide dedicated space for pedestrians and cyclists, creating safer conditions for current and future users.

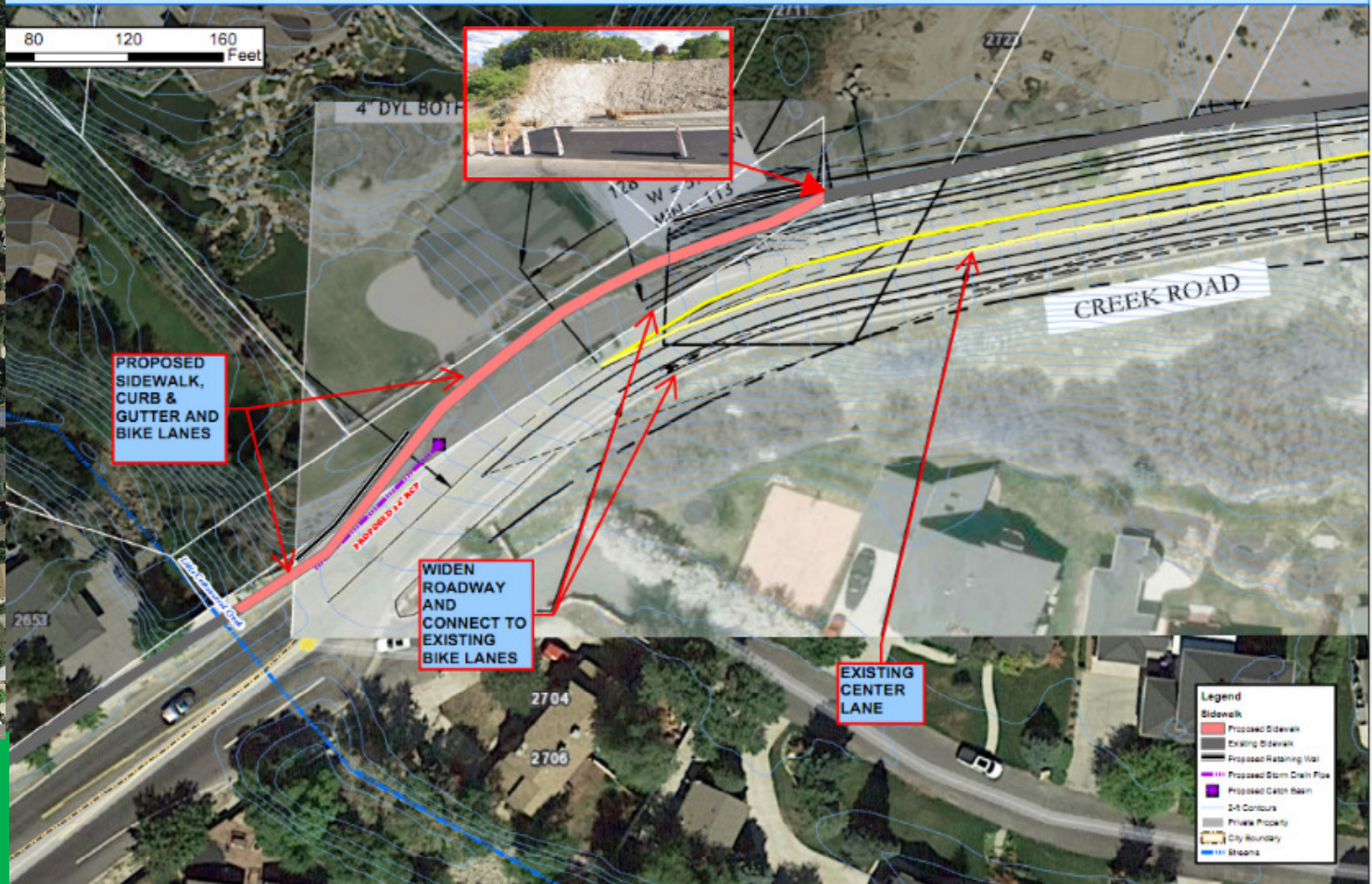


# Cottonwood Heights – Creek Road – Construct Sidewalk

## Project Type – Capital Improvement

2680 East to 2780 East – (0.1 miles)

### COTTONWOOD HEIGHTS - CREEK ROAD TAP APPLICATION



**Project Cost –  
\$ 419,200**

**Funds Request –  
\$ 390,820**

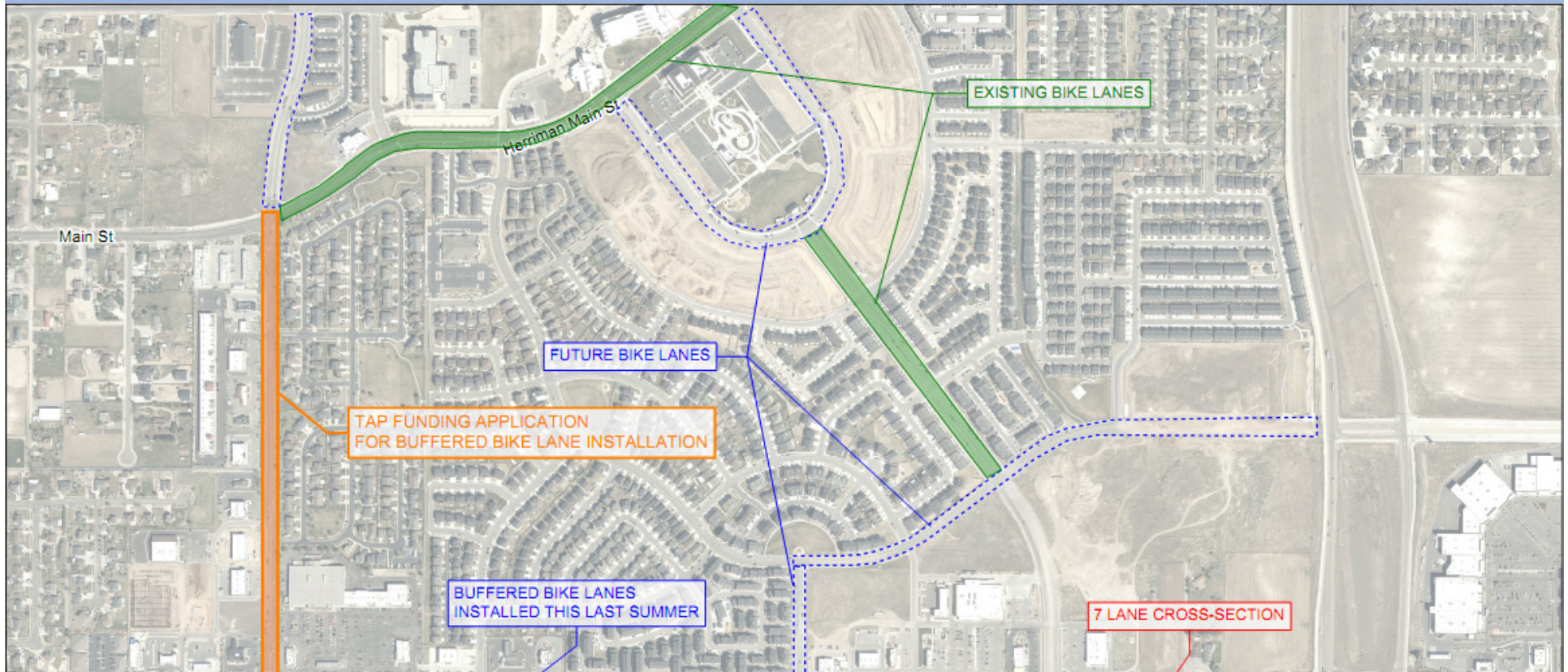
Project will install sidewalk on north side of Creek Road along a steep hill. Project will widen the existing roadway on Creek Road to install continuous Type II Bike Lanes on both sides of the road.



# Herriman City – 5600 West – Bicycle Lanes

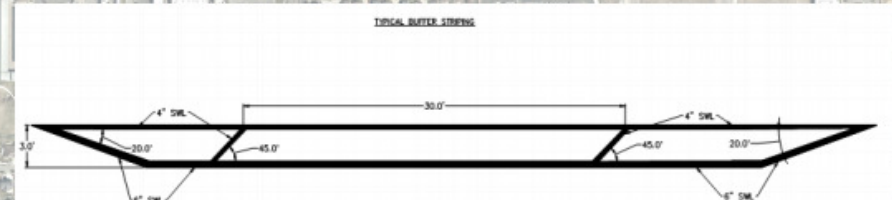
## Project Type – Capital Improvements

13100 South to 13400 South – (0.46 miles)



Project Cost –  
\$ 46,100

Funds Request –  
\$ 36,100



Promote bicycle travel over motorized vehicles in City Center by installing buffered bike lanes.



# Herriman City – Juniper Crest – Crosswalk Project Type – Capital Improvements

14530 South to 14660 South – (0.25 miles)



**Project Cost –  
\$ 195,000**

**Funds Request –  
\$ 162,500**

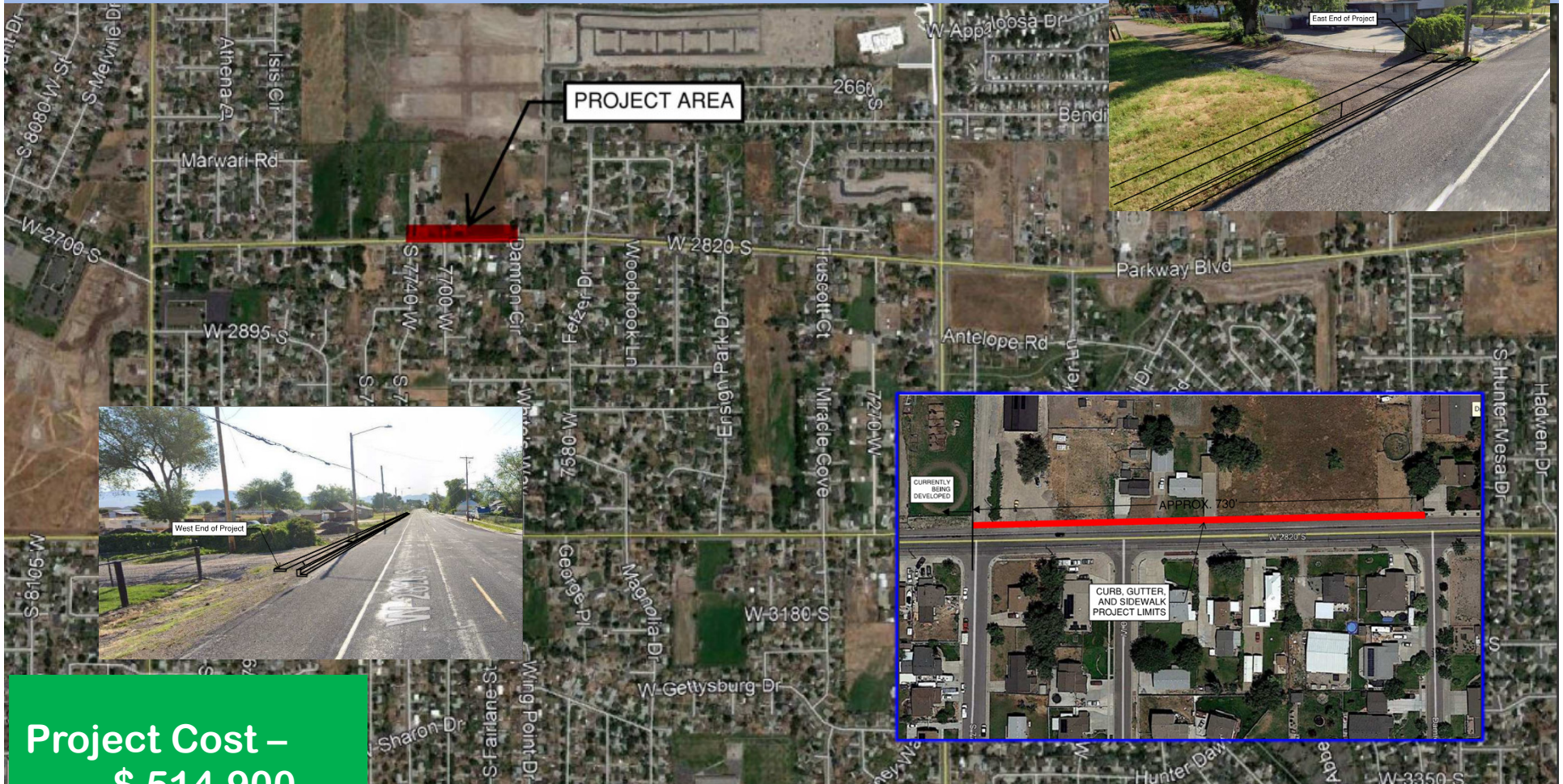
This is an intersection Crosswalk reconfiguration which includes a middle island refuge. Juniper Crest is a 116 feet wide ROW and this intersection is at the crest of a hill making for a difficult crossing especially where it is the walking route to school for many students.





**Magna Metro Township – 2820 South Sidewalk – Construct Sidewalk**  
**Project Type – Safe Routes to School**

7630 West to 7736 West – (0.14 miles)



**Project Cost –  
\$ 514,900**

## Funds Request – \$ 480,041

Construct sidewalk, curb, and gutter on the North side of 2820 South Street from existing sidewalk at 7630 W to 7736 W. Sidewalk will improve safety for students walking to Lake Ridge Elementary and Entheos Academy charter school and to the proposed Riter Canal Trail.



## Millcreek – 1300 East – Construct Sidewalk

### Project Type – Capital Improvement

4240 South to 4400 South – (0.2 miles)

Project Cost –  
\$ 1,653,800

Funds Request –  
\$ 1,541,838



Figure 2: No sidewalk on East side of 1300 East. Vegetation & mailbox force pedestrians into travel way.



Figure 3: No sidewalk across from Larry H. Miller softball complex. Looking North.



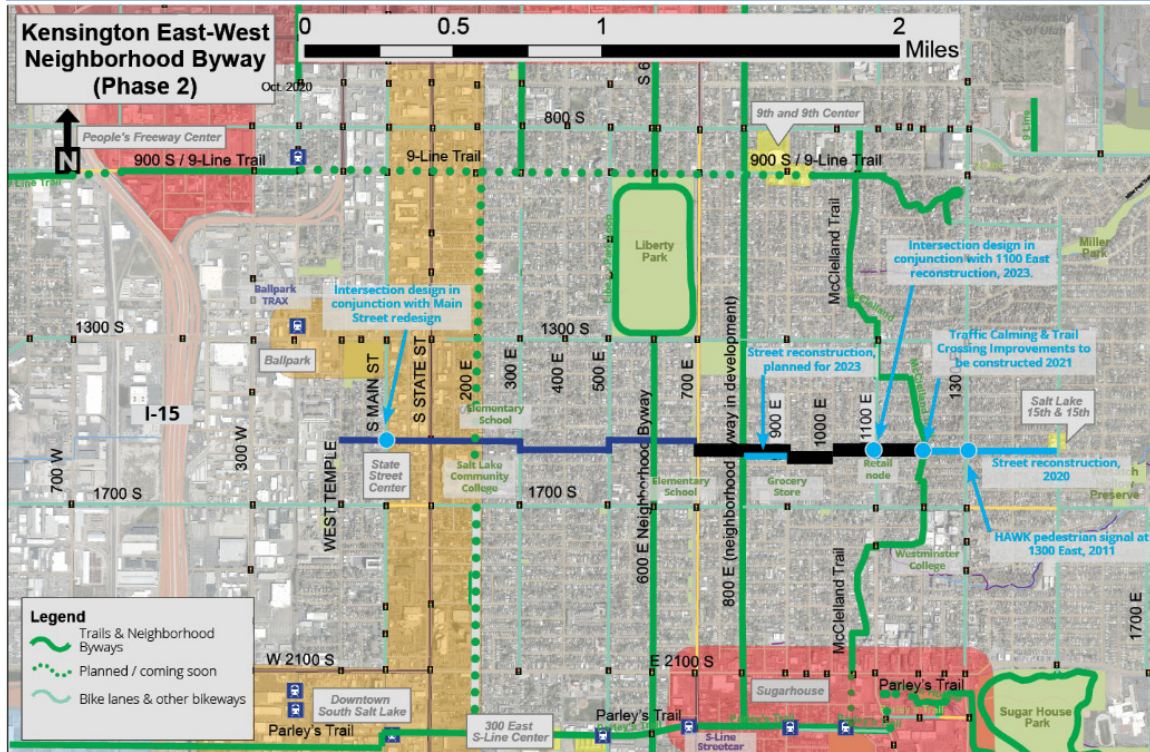
This project completes missing sidewalk, curb and gutter on the East side of 1300 East near Big Cottonwood Regional Park and Softball Complex. This sidewalk allows for pedestrian access to the largest park in the Millcreek/Holladay area. Park users frequently park on the East side of 1300 East when parking lot is full. There is no pedestrian sidewalk to traverse along this side. Although sidewalk is not on any current SNAP plans, the park is frequented by numerous school age children throughout the year. Examples being field trips, cross country training or meets for the local area high schools, etc.



# Salt Lake City – Kensington East-West Byway Phase II – Ped & Bike

## Project Type – Capital Improvement

600 East to McClelland Trail – (1.0 mile)



Map produced Dec. 2020 | B. Roof | Salt Lake City Transportation Division



Crossing treatments such as Rectangular Rapid Flashing Beacons (RRFBs) will be added along the neighborhood byway. Pictured here, a crossing on the 600 East neighborhood byway. Motorists are yielding to the bicyclist who has activated the RRFBs.



A pedestrian and bicycle crossing signal will be needed at 700 East. This example on the 600 East Neighborhood Byway gives an idea of the type of treatment. The design will be somewhat different with the offset intersection and will incorporate the 700 East median.

This project will enhance bike /ped use of and connectivity on low volume local streets as a through route, improving crossings at larger streets. The all ages & abilities route is in SLC's ATIP and SLC's Ped Bike Master Plan. An east-west route is needed as parallel arterial routes are not comfortable walking or biking.

**Project Cost –  
\$ 587,900**

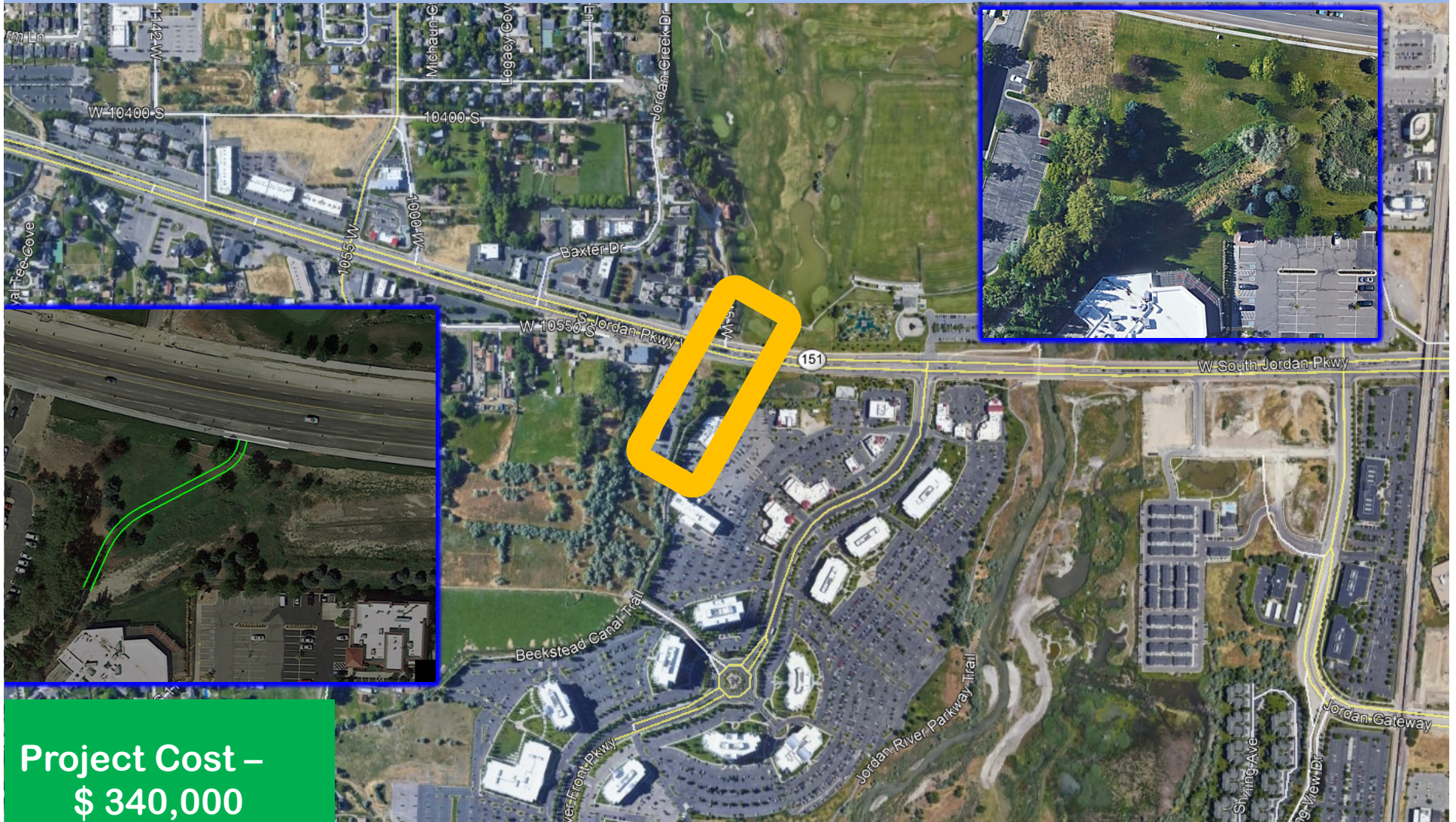
**Funds Request –  
\$ 410,119**



# UDOT/ So Jordan – Beckstead Canal Trail Extension

## Project Type – Ped & Bike

10700 South – SR-171 (10600 South)– (0.05 miles)



**Funds Request –  
\$ 312,321**

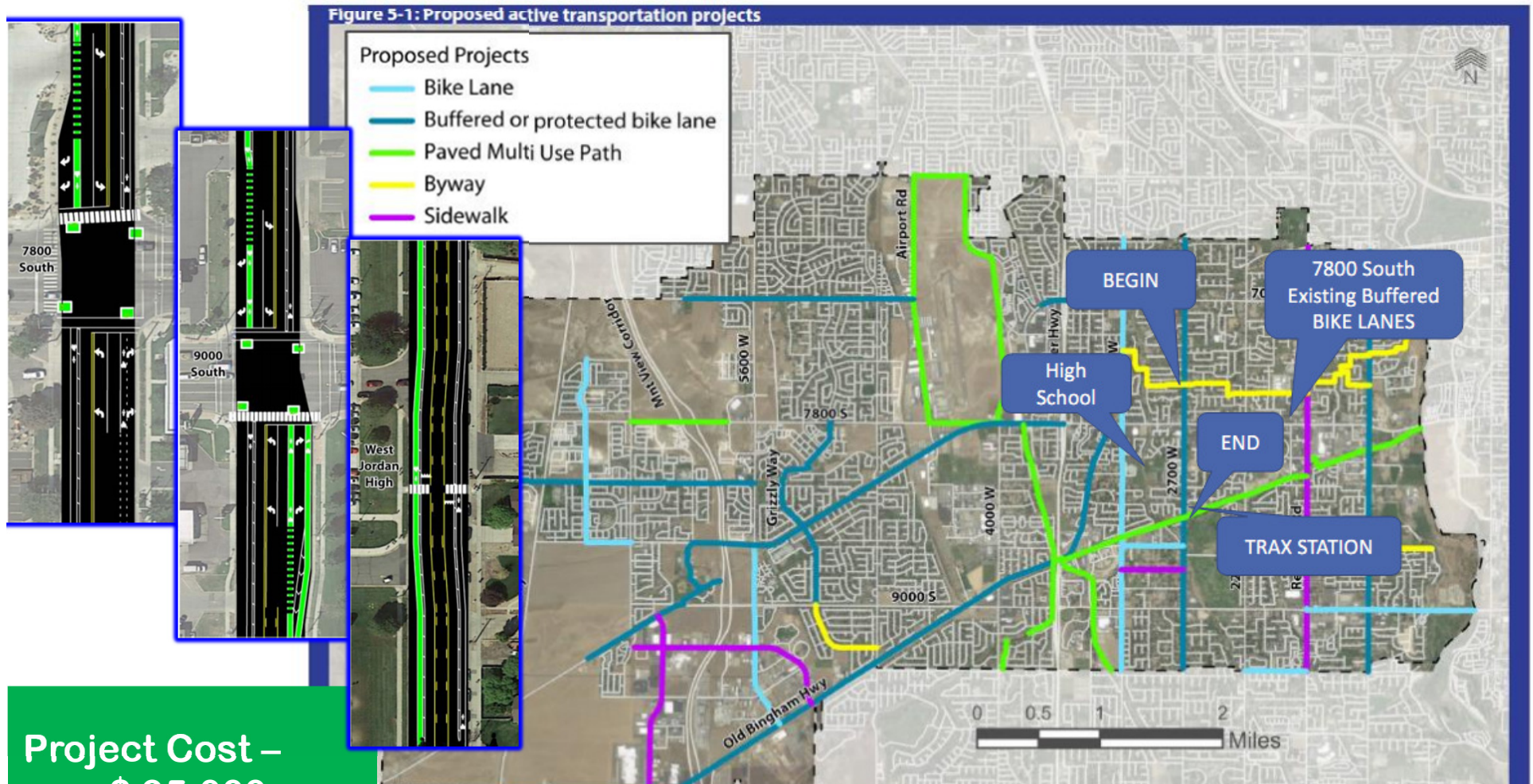
Construct new shared use path to connect the existing Beckstead Canal Trail to 10600 S.



# West Jordan – 2700 West – Bike Lanes

## Project Type – Capital Improvement

7600 South to Sugar Factory Road – (1.0 mile)



**Project Cost –  
\$ 95,000**

**Funds Request –  
\$ 88,000**

The buffered bike lanes will include on-street short term parking near West Jordan High School and will provide bike boxes at the intersection of 2700 West and 7800 South. The new improved green bike lanes will connect the high school to the nearby TRAX Sugar Factory Station. There are two existing RRFB crossings on this section of 2700 West.



# West Jordan – TRAX Rail Trail – Design

## Project Type – Planning/ Study

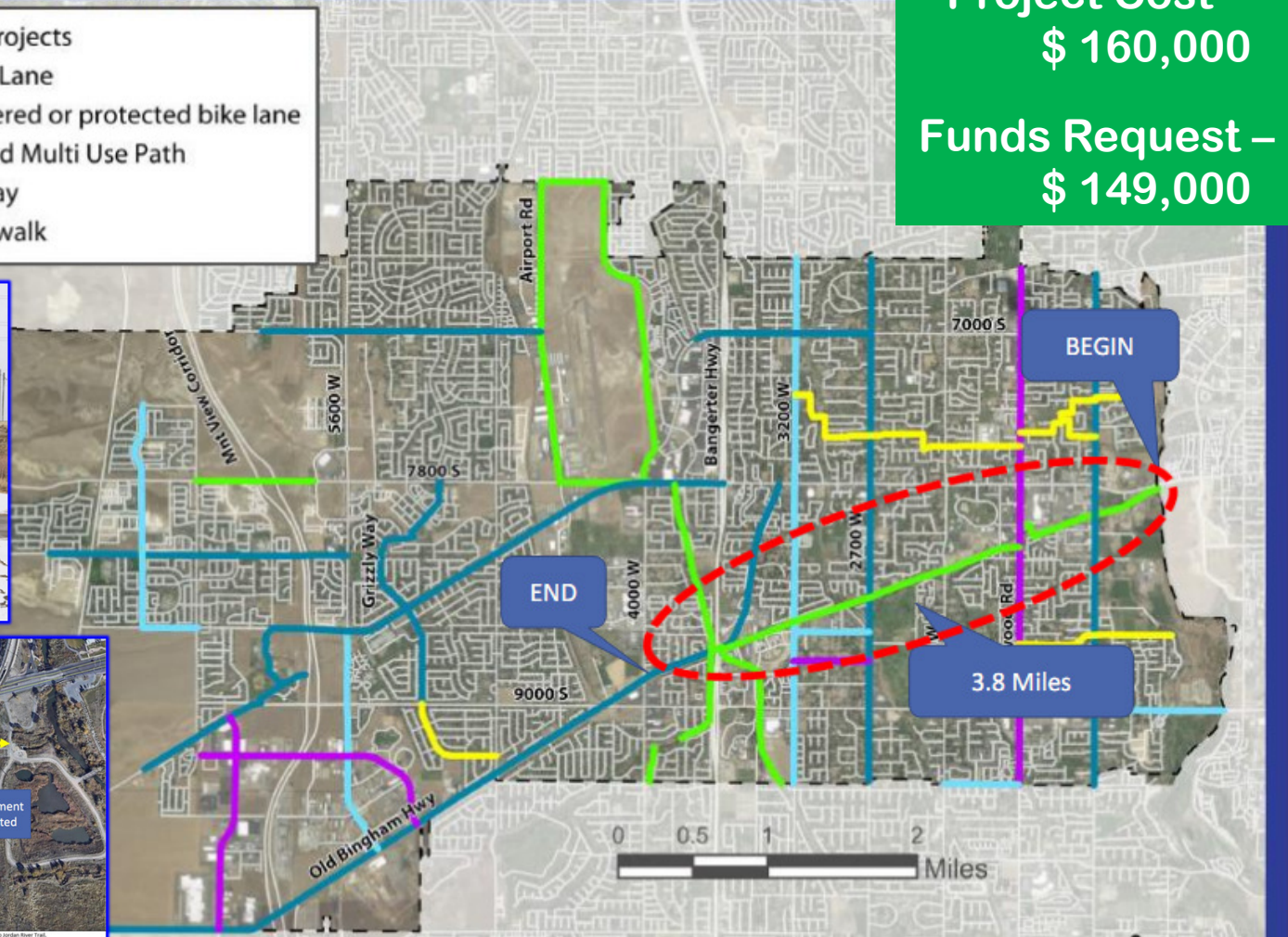
Historic Gardner Village Station to 9000 South/4200 West – (3.8 miles)

Figure 5-1: Proposed active transportation projects



### Proposed Projects

- Bike Lane
- Buffered or protected bike lane
- Paved Multi Use Path
- Byway
- Sidewalk



Project Cost –  
\$ 160,000

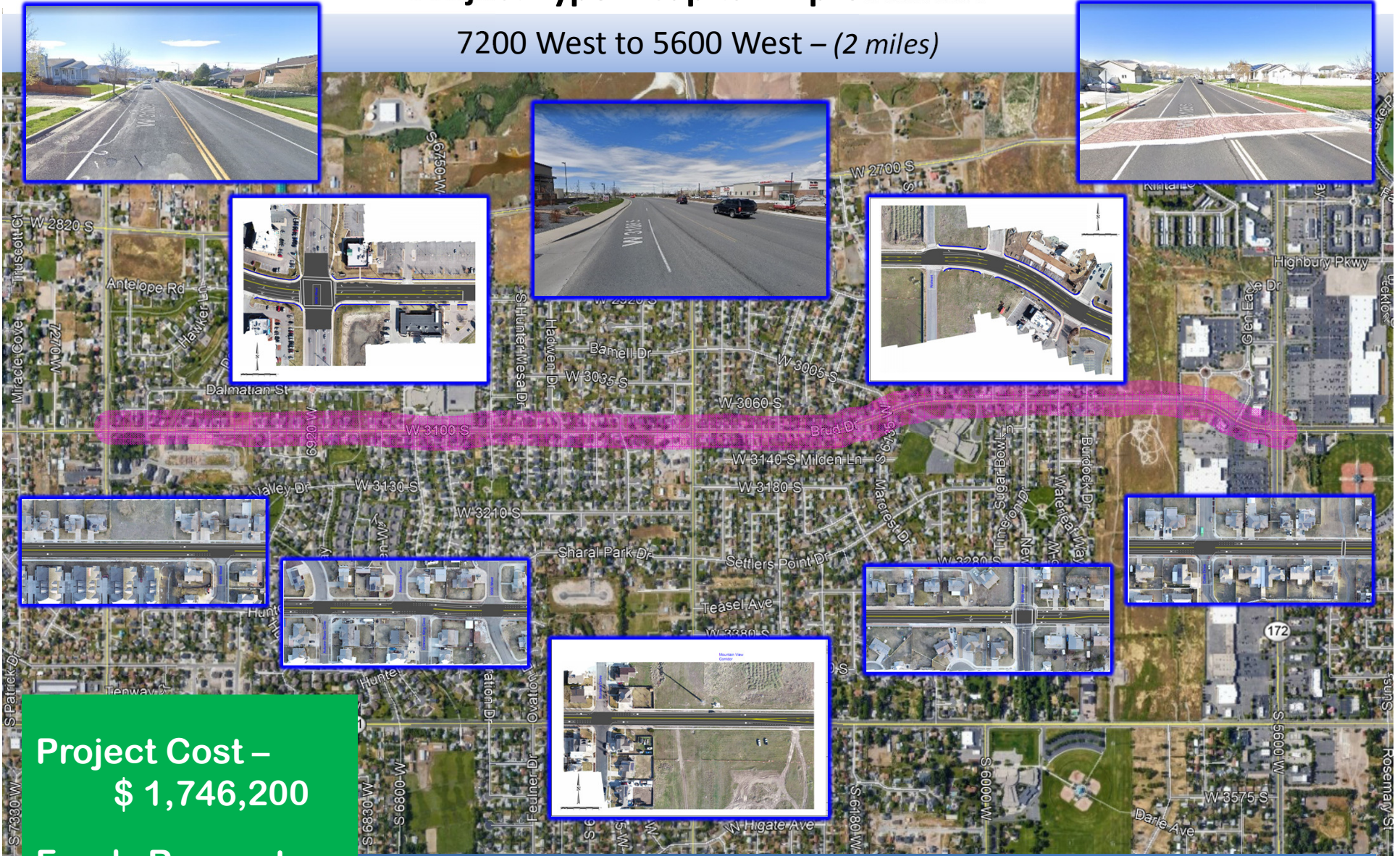
Funds Request –  
\$ 149,000

Project will design new trail in and near the UTA TRAX Redline. This project is in the heart of West Jordan City. It connects bikes east-west through the heart of the City. Provides a missing connection to the Jordan River and Trax stations. Will improve Transit use by providing that last mile connection. 3.8 miles long.



7200 West to 5600 West – (2 miles)

7200 West to 5600 West – (2 miles)



**Funds Request –  
\$ 1,627,982**

This project repurposes existing shoulder as a buffered bike lane, addition to sidewalk widening in areas with no shoulder.



# White City – Poppy Lane - Safe Routes to School Project Type – Capital Improvement

Sego Lily Drive to Galena Drive – (0.2 miles)

