

## Frontage Road to Market Place Drive

[illegible]

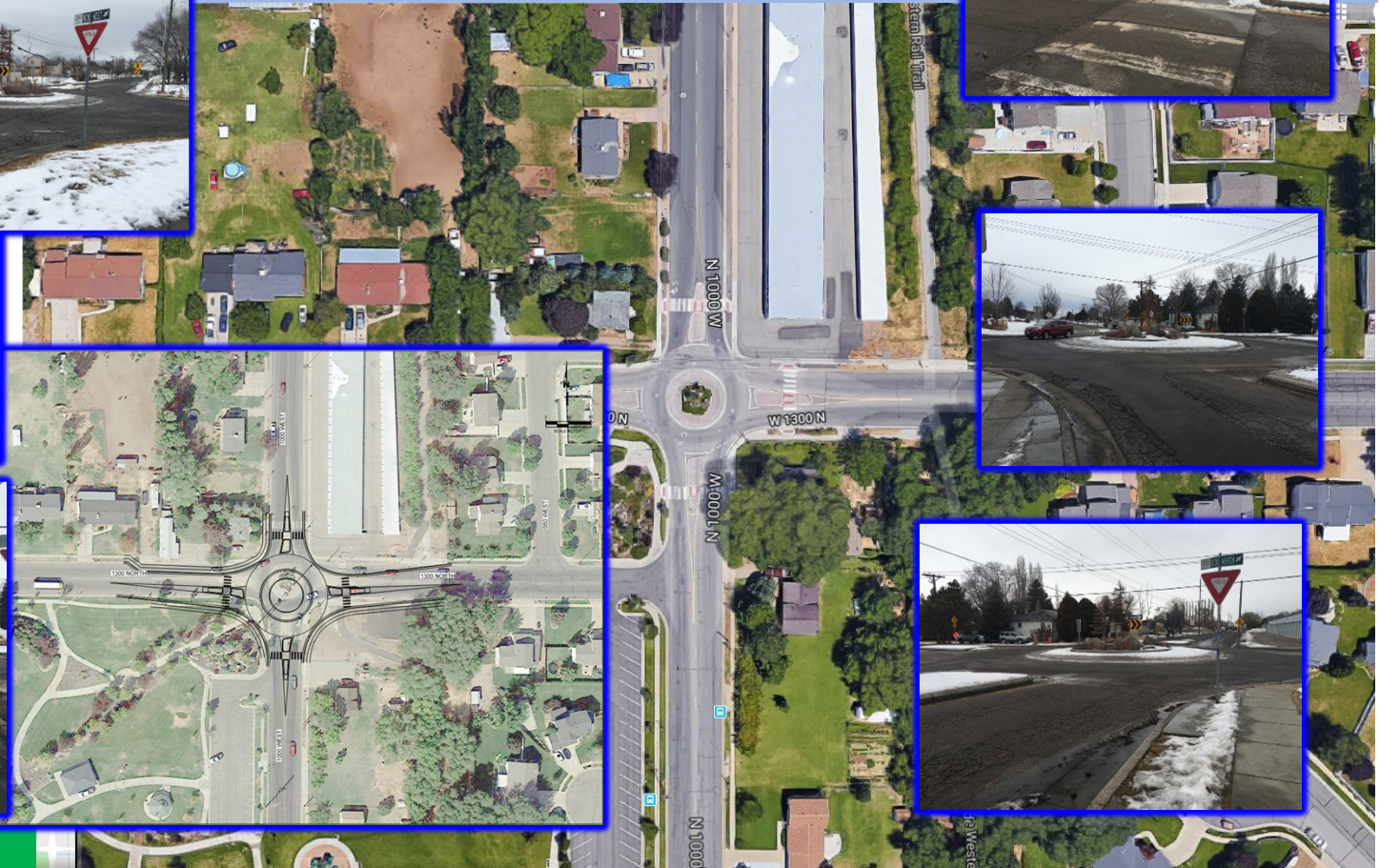
The Parrish Lane - Market Place Intersection is extremely congested. This project is an essential project for Centerville City and UDOT Region 1 in order to reduce congestion along Parrish Lane. This project will be built to the 2040 traffic model prepared by UDOT Region 1 traffic engineers and is in coordination with the UDOT Region 1 plans to improve the Parrish Lane - I-15 Interchange.



# Clinton City – 1000 West Roundabout

## Project Type – Intersection Improvement

1300 North & 1000 West



**Project Cost –**  
**\$ 1,140,900**

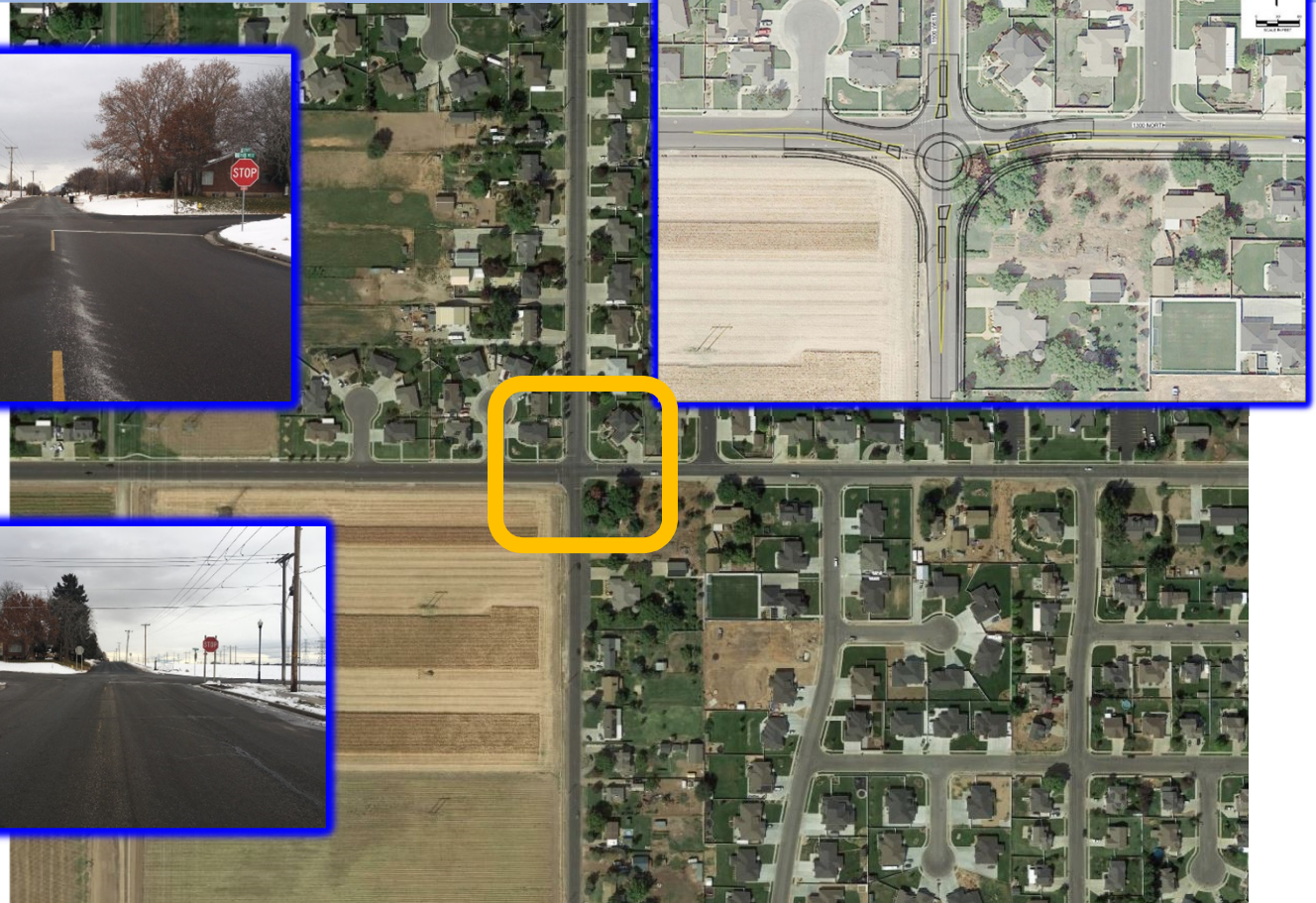
**Funds Request –**  
**\$ 550,000**

The present roundabout at 1300 N and 1000 W is too small and has reached the end of its useful life. A full-size roundabout will be constructed to provide for better mobility for vehicles and added protection and safety for pedestrians and bikers as they travel to schools, parks, businesses, and residential areas.



## Clinton City – 1500 West Roundabout Project Type – Intersection Improvement

1300 North & 1500 West



**Project Cost –  
\$ 2,190,100  
Funds Request –  
\$ 1,000,000**

The 1300 N 1500 W intersection is a 4-way stop controlled intersection. Sight distance on the southeast corner is obstructed due a hill. The project would remove the obstructions and construct a roundabout at the intersection to improve safety, and mobility for pedestrians, bicyclists, vehicles, and improve air quality.



# UDOT / Kaysville – Dual Left Turn Lanes - Intersection Improvement

## Project Type – Operations

200 North at I-15 SB On ramp



**Project Cost –  
\$ 1,000,000**

**Funds Request –  
\$ 900,000**

The 200 North westbound to southbound I-15 has a single left turn lane that backs up through the eastside intersection causing traffic congestion for the I-15 northbound off ramp and creating backing on the northbound off ramp.



# UDOT – Legacy Parkway Ramp Meters – Signal/ Operation

## Project Type – Operations

500 South and Parrish Lane - Southbound - On ramps



**Project Cost –  
\$ 1,000,000**

**Funds Request –  
\$ 900,000**

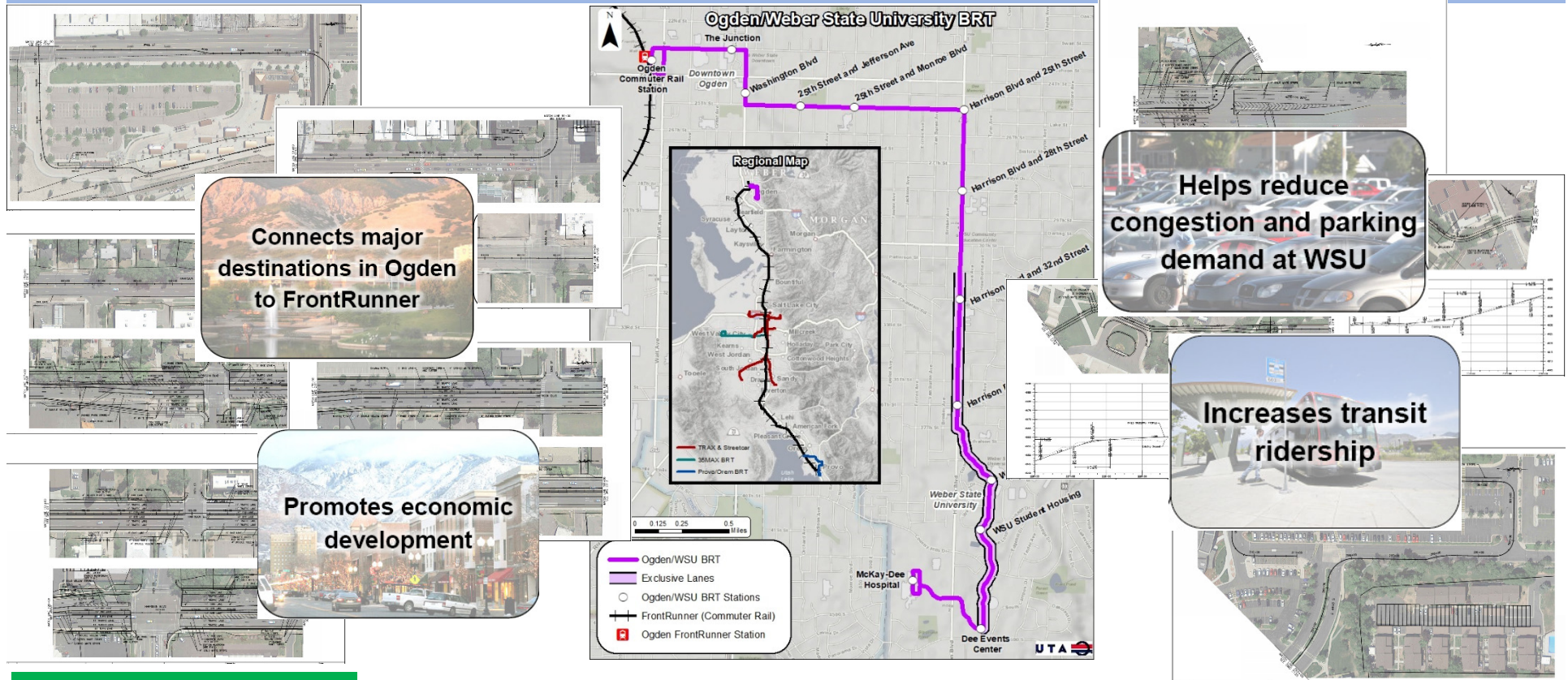
Ramp metering is one of the most direct, effective, and practical measures for manage highway traffic if appropriately implemented. As traffic volumes on Legacy Parkway increase the installation of ramp meters will help reduce congestive traffic flows.



# UTA – Ogden-WSU Bus Rapid Transit (Construction)

## Project Type - Transit

Ogden Intermodal Hub (23<sup>rd</sup>/Wall) to McKay Dee Hospital (48<sup>th</sup>/Harrison)



**Project Cost –  
\$ 79,000,000**

**Funds Request –  
\$ 1,500,000**

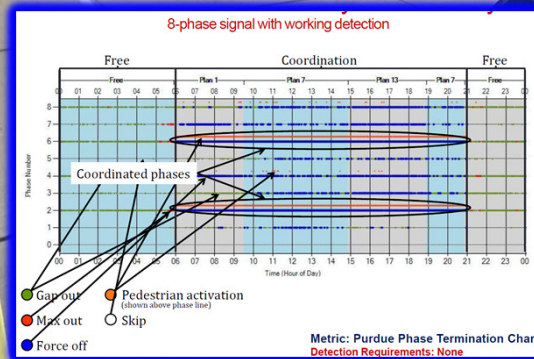
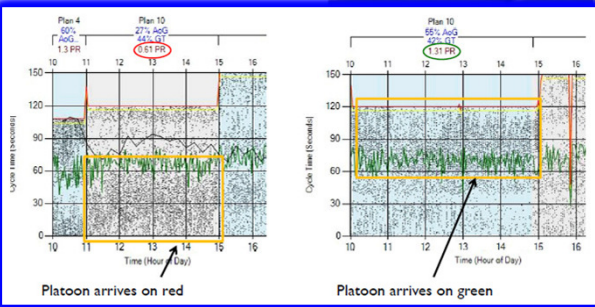
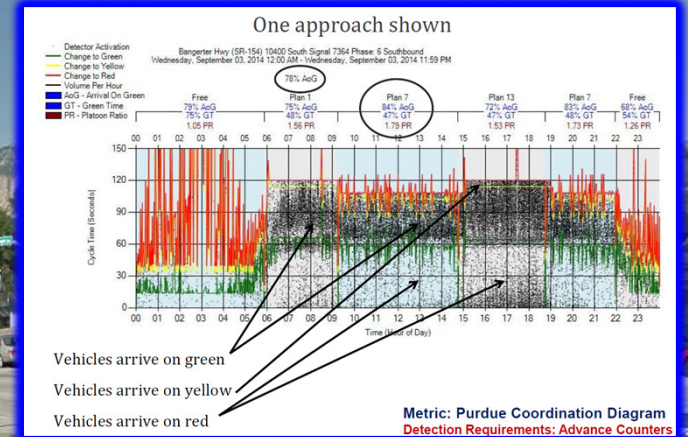
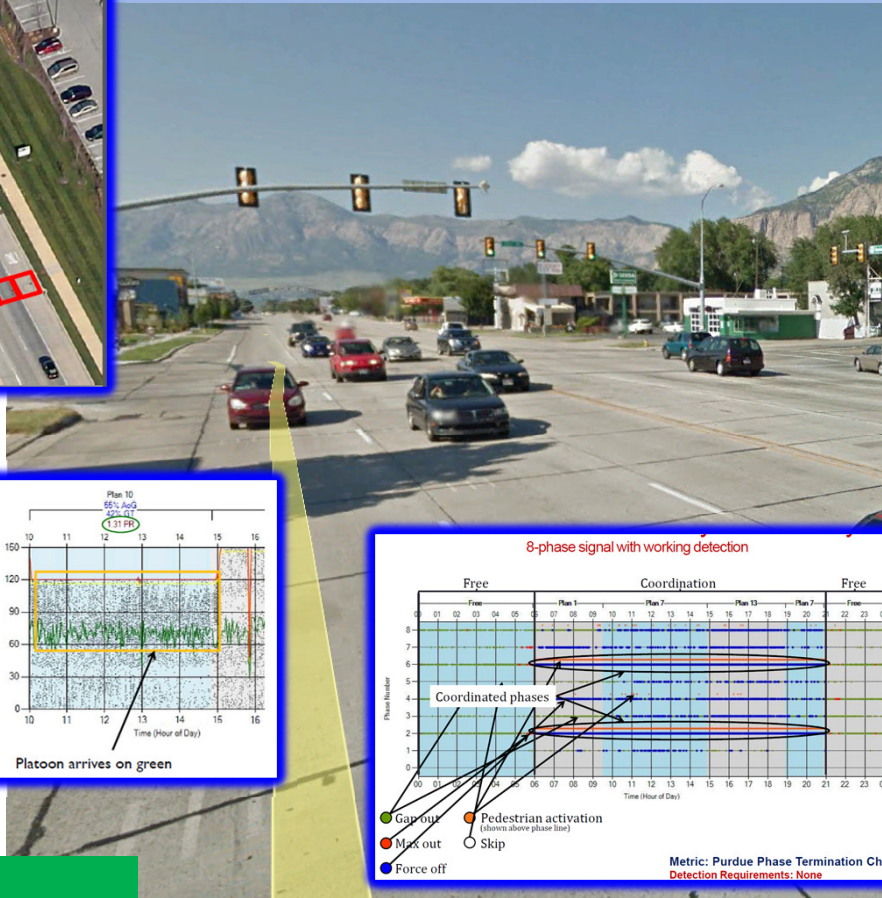
This request is for the construction of the Ogden/WSU Bus Rapid Transit Project. UTA is seeking an FTA Small Starts grant to fund just over 60% of the total project cost of \$79 Million, with the remainder of the costs coming from this request along with programed local and state funding.



# UDOT/ Traffic Operations Center (TOC)

## Project Type – ATMS or ITS

### Advance Signal Detection – Ogden Area



Project Cost –  
\$ 450,000

Funds Request –  
\$ 419,535

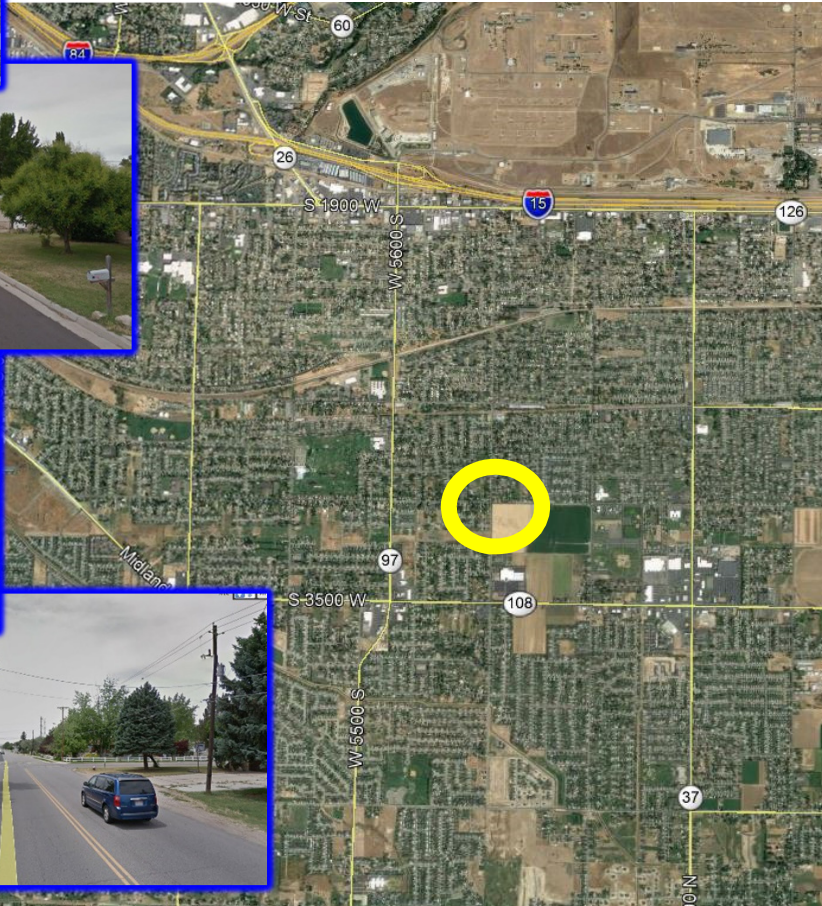
Advance signal detection gives UDOT the ability to remotely manage/modify signal timing and measure signal performance, thus increasing arrival on green and decreasing time spent at a red light. This project will install and integrate advance signal detection at 21 intersections in the Ogden area.



# Roy City – 6000 South Roundabout

## Project Type – Intersection Improvement

6000 South & 3100 West



**Project Cost –**  
**\$ 760,700**

**Funds Request –**  
**\$ 709,201**

The project consists of constructing a roundabout at the intersection of 6000 South and 3100 West. This intersection is a dangerous intersection that will be greatly improved with the construction of a roundabout that will effectively control traffic speeds and movements.