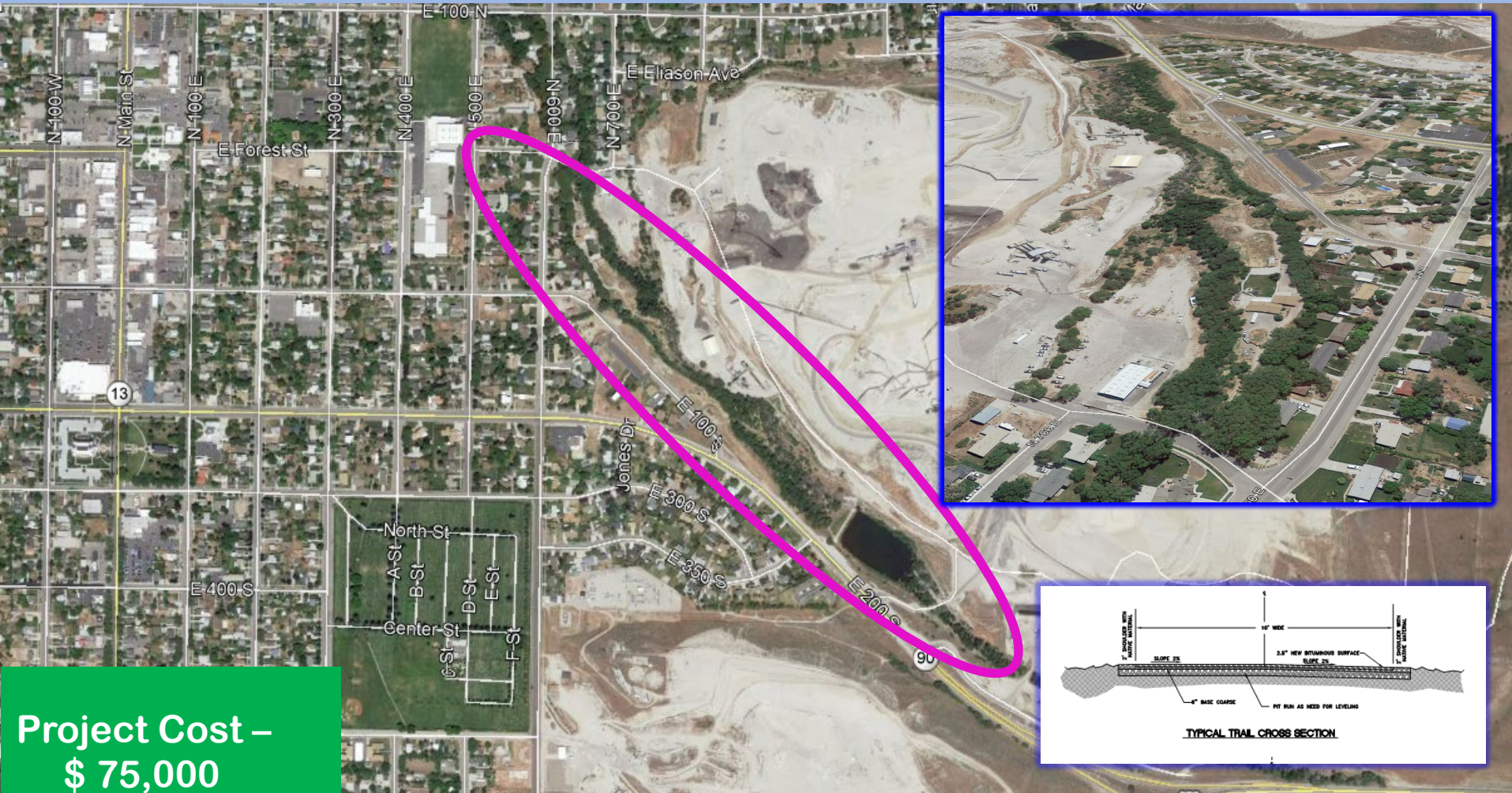


Brigham City – Brigham City Bicycle/ Pedestrian Path

Project Type – Capital Improvement

Mayor's Pond to Forest Street



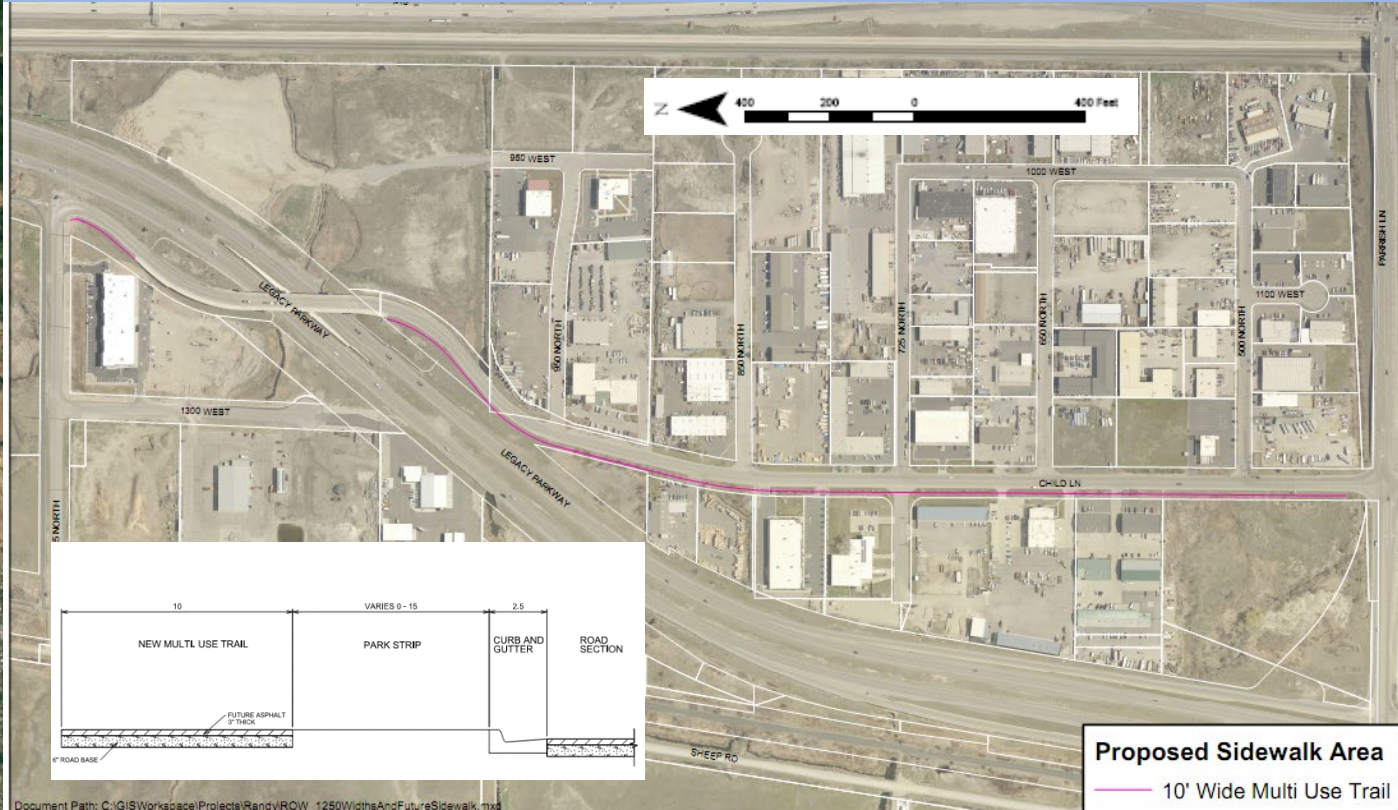
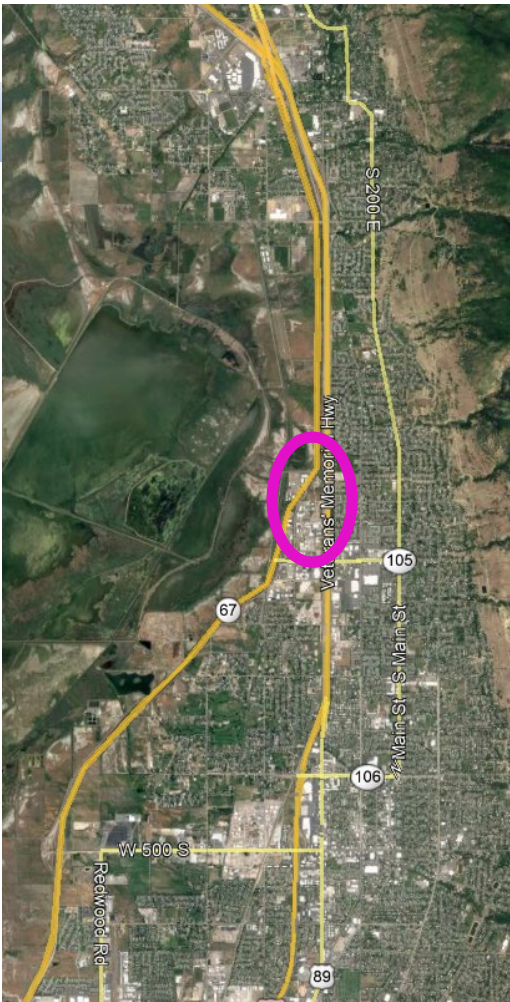
**Project Cost –
\$ 75,000**

**Funds Request –
\$ 60,000**

Brigham City is requesting funding to proceed with a proposed bicycle/pedestrian path, separate from busy streets, around the city. When complete, this pathway will provide access to the entire city for all wishing to use alternate transportation, as well as safe routes to school.

Project Type – Capital Improvement

Parrish Lane to 1275 North



This trail is needed to complete the connection from the recently constructed pedestrian bridge over I-15 and walkway along Parrish Lane with the walkway over the Legacy Bridge and over to the Legacy Trail system. The timing for this project is very good and there is much synergy at this time for this project as a development has recently been approved for the NW corner of 1250 West and Parrish Lane. The developer will be required to construct the multi-use trail along his frontage on 1250 West in the next year or two. This project will complete the City's trail system through their business / commercial area.

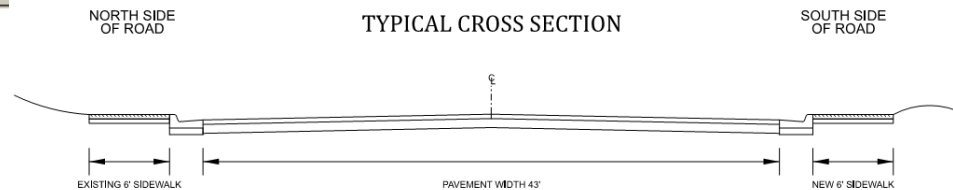
**Project Cost –
\$ 466,200**

Funds Request – \$ 378,700

North Salt Lake – Eagleridge Drive Sidewalk

Project Type – Safe Routes to School

Orchard Drive to Parkview Drive



Project Cost –
\$ 203,700

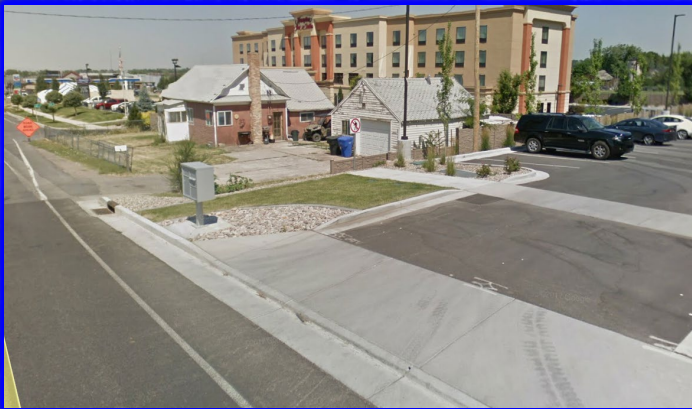
Funds Request –
\$ 150,000

There is a missing segment of sidewalk on the south side of Eagleridge Dr between Parkview and Orchard Dr, which happens to be the only walking route to Orchard Elementary for students living south of Eagleridge. There is a major conflict between vehicular traffic and pedestrians having to illegally cross the street.

Farmington City – East Park Lane Road – Construct Missing Sidewalk

Project Type – Capital Improvement

326 West Park Lane

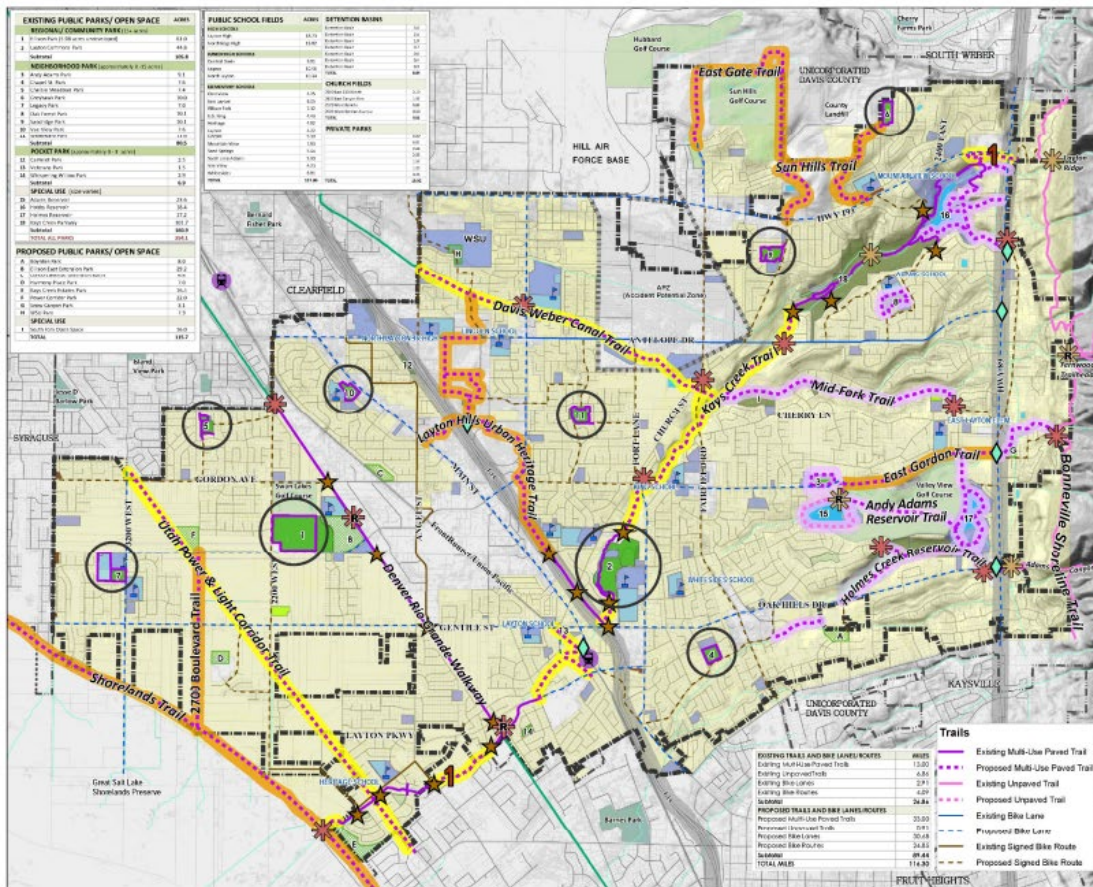


**Project Cost –
\$ 76,200**

**Funds Request –
\$ 71,041**

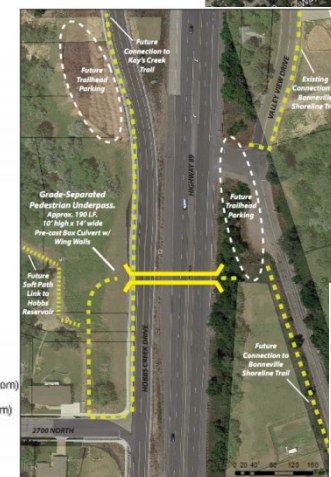
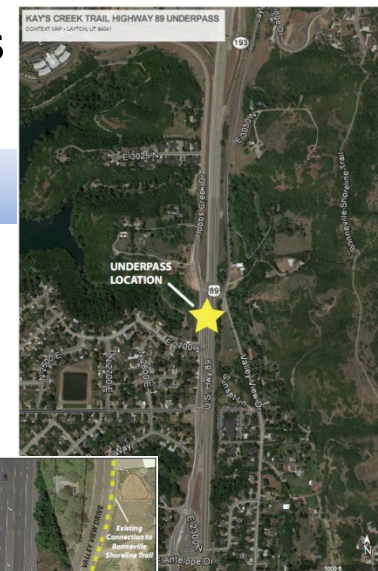
The north side of SR 225 is fully improved from Main St. to Lagoon Dr. except for a 100' gap which requires asphalt, curb & gutter, sidewalk, and additional ROW at 326 West Park Lane. The project will improve the street on the north side, and provide pedestrian access from Lagoon Dr. to the bus stops on SR 106.

Layton City – Kay’s Creek Trail – New Trail Underpass
Project Type – Capital Improvement
 Hobbs Creek Drive to Valley View Drive



- Priority Trails**
- Regional Transportation Trails**
- Kay's Creek Trail, Davis Weber Canal Trail, Utah Power & Light Corridor Trail
- Recreational Trails**
- Andy Adams Reservoir Trail, Andy Adams Park Walking Trail, Oak Forest Park Walking Trail, Holmes Creek Reservoir Trail, Mid-Fork Trail
- Inter-City Connecting Trails**
- Sun Hills Trail, East Gordon Trail, Heritage Urban Trail, 2700 Blvd. Trail, Layton Hills Overpass Trail, Shorelands Trail, East Gate Trail
- Layton City Boundary**
- Hill AFB Easement Area**
- Public Park**
- Public School Field**
- Private Park/ Golf Course**
- Church Field**
- Open Space**
- Detention Basin**
- Proposed Public Park**
- Pond/ Reservoir**
- Residential**
- Public/Quasi Public/Utility**
- Existing Park Perimeter Trails**
- Existing Trailhead (R = with Restroom)**
- Future Trailhead (R = with Restroom)**
- Proposed Pedestrian Bridge**
- Trail Access Point**
- FrontRunner Station**

**Layton City Parks, Recreation,
Trails, Open Space &
Cultural Facilities Master Plan**



**Project Cost –
\$ 991,300**

**Funds Request –
\$ 495,650**

Kay's Creek Trail is a regional connecting, 10' wide asphalt trail that serves as a commuter route, recreational trail and safe-routes-to-school option. The proposed underpass is an important part of infrastructure needed to provide a safe, grade-separated crossing across Highway 89.

Farmington City – State Street & Clark Lane – Pedestrian Crossings

Project Type – Capital Improvement

400 West and 950 West



\$ 318,100

**Funds Request –
\$ 296,565**

There has been 1 pedestrian fatality at State Street and 400 W. Location two has seen a large increase in pedestrian and vehicle traffic near the Davis County Legacy Event Center. The project is needed to increase safety for pedestrians at these crosswalks.

Plain City – 1975 North Widening – Construct Sidewalk

Project Type – Safe Routes to School

3775 West to 3525 West



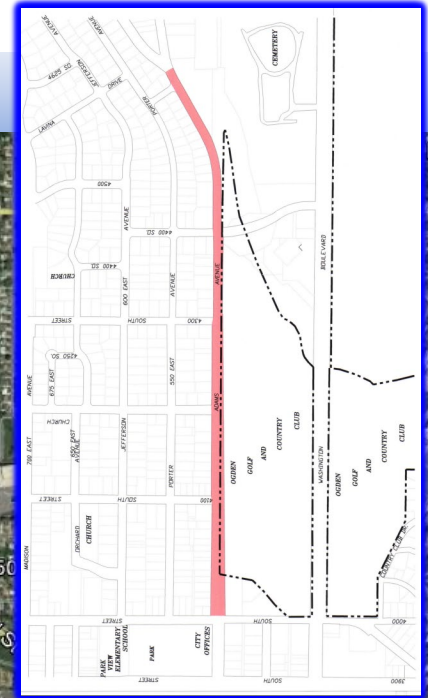
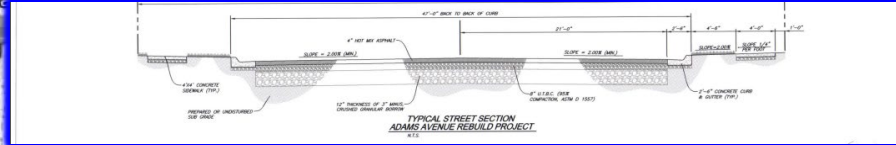
**Project Cost –
\$ 1,142,300**
**Funds Request –
\$ 1,064,966**

The proposed project is to add a shoulder and curb, gutter and sidewalk for pedestrian use and to provide a walking route to the elementary school.

South Ogden City – Adams Avenue Sidewalk Project

Project Type – Safe Routes to School

42nd Street to 40th Street



Project Cost –
\$ 656,500

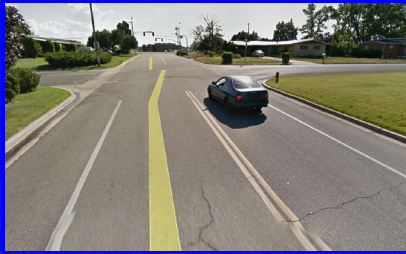
Funds Request –
\$ 612,055

The purpose of this project is to connect two areas of existing sidewalk and provide a safe route for school children to travel to and from school. Currently, students walking to and from school in the project area are forced to walk in the street.

South Ogden City – Burch Creek Sidewalk Project

Project Type – Safe Routes to School

Kiwana Drive to US-89



**Project Cost –
\$ 673,400**

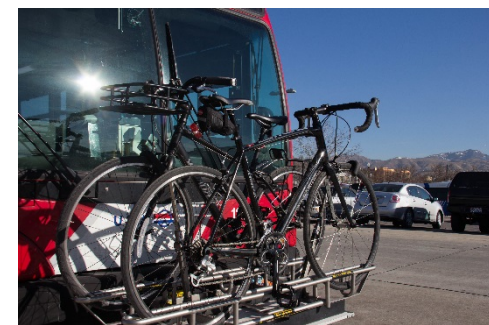
**Funds Request –
\$ 627,811**

To provide safe routes of travel for school children as they travel to the Junior High School. Currently, the students walk in the street. It should be noted that this project is part of the School District's SNAP plan.

UTA – Bus Bike Rack Expansion

Project Type – Capital Improvement

Davis and Weber Counties



**Project Cost –
\$ 42,000**

**Funds Request –
\$ 39,157**

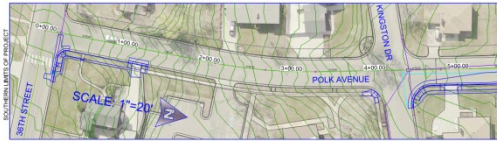
All 2006-2012 model year UTA buses have racks that hold two bikes. System-wide, this is about 145 buses. These are often filled and biking passengers are turned away. New UTA buses have racks that accommodate three bikes. These funds will pay for 35 (the estimated number of these buses attributable to the Ogden Layton Urbanized Area) 3 spot racks to replace existing 2 spot racks on UTA current fleet.

Ogden City – Polk Avenue Sidewalk Project

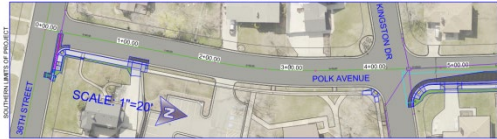
Project Type – Safe Routes to School

Franklin Avenue to 36th Street

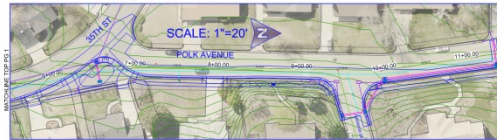
EXISTING w/PROPOSED IMPACT AREAS



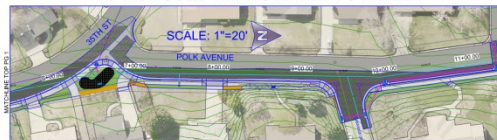
PROPOSED IMPROVEMENTS-FILLED



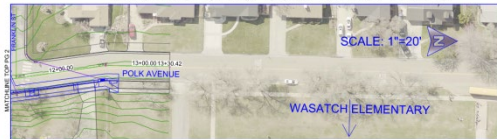
EXISTING w/PROPOSED IMPACT AREAS



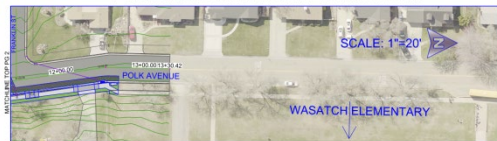
PROPOSED IMPROVEMENTS-FILLED



EXISTING w/PROPOSED IMPACT AREAS



PROPOSED IMPROVEMENTS-FILLED



**Project Cost –
\$ 415,000**

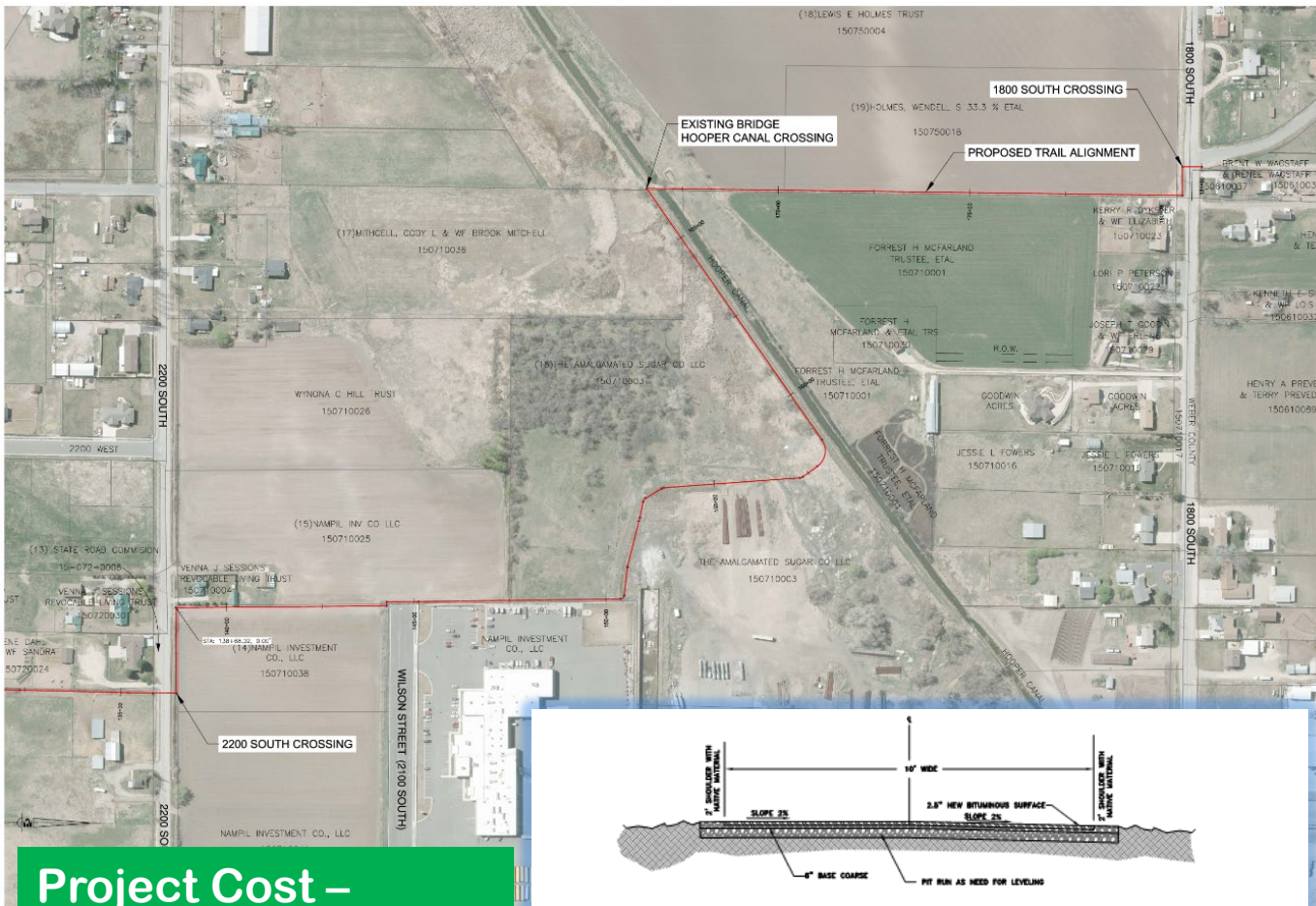
**Funds Request –
\$ 367,886**

Currently, there are 266 single family residences within the south of Wasatch Elementary that are tributary to the proposed sidewalk. It is rare to see sidewalk missing in such close proximity to an Elementary. This project would also be appreciated by residents with disabilities, the elderly and WSH students.

West Haven – River Parkway Trail

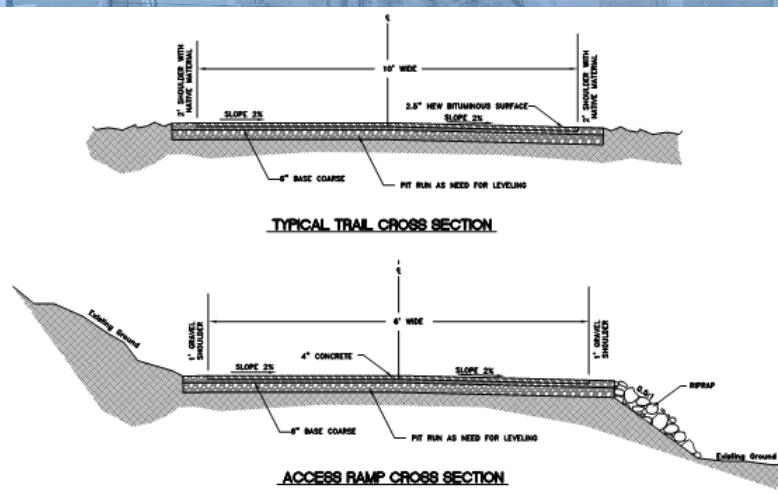
Project Type – Capital Improvement

1800 South to 2200 South



**Project Cost –
\$ 739,800**

**Funds Request –
\$ 630,981**



The proposed project, from 1800 South to 2200 South, will complete a gap that will connect the final phase of the trail (1800 South to the Weber River) to the existing Denver and Rio Grande Western Rail Trail. This will complete a trail that will connect the Weber River to the Jordan River Trail in Salt Lake.