

WFRC

Safety Report

June 2016
by
Kip Billings



UDOT Crash Database - Numetric

udot.numetric.com (requires account)

crashmapping.utah.gov (public access)

Severity: Serious Injury ✕

CRASH SUMMARY

Crash ID	10763667
Route	0084P
Milepoint	86.1
Virtual Navigator	Link
Location Description	I-84, 1 Tenth(s) of a Mile E of Ref. Post 86, 7392 Feet W of EXIT 87 STRUCTURE
County	DAVIS
Date	Mar 06, 2015
Time	1:00 PM
Vehicles Involved	1
Manner Collision	Single Vehicle
Weather Condition	Clear
Light Condition	Daylight

ROAD DETAILS

Roadway Type	Mainline
Posted Speed	65 MPH

Posted Speed	65 MPH
Roadway Junction Feature	No Special Feature/Junction
Lanes	2
Roadway Contributing Circumstance	None
Functional Class	Interstate
Urban/Rural	Urban

CRASH ATTRIBUTES

Roadway Departure, Drowsy Driving, Interstate Highway, Collision with Fixed Object

POTENTIAL COUNTERMEASURES

Countermeasure: Shoulder Barrier, Countermeasure: Shoulder Rumblestrips, Countermeasure: Median Barrier, Countermeasure: Clear Zone Improvements, Countermeasure: Shoulder Widening

VEHICLE 1 DETAIL

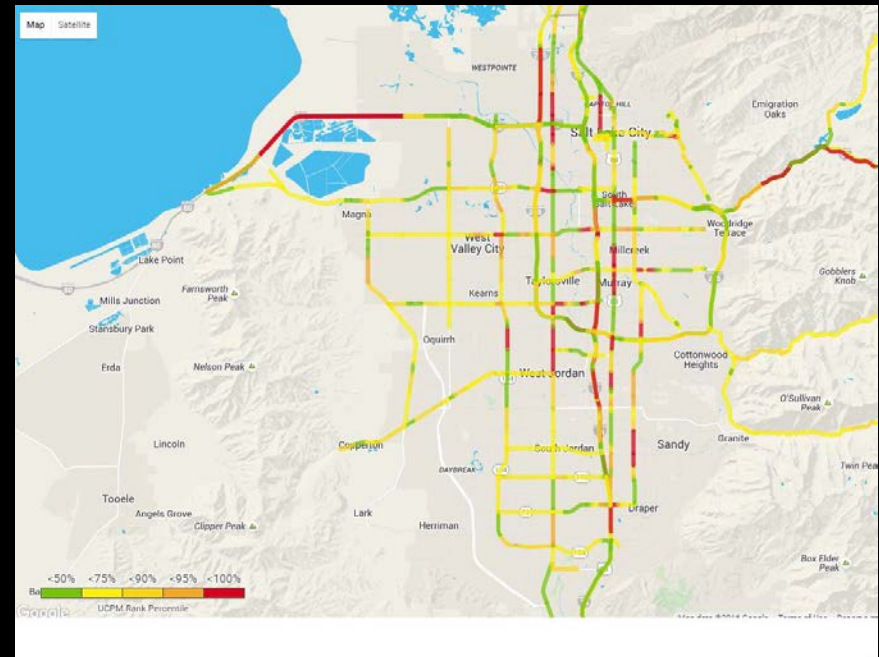
Vehicle Maneuver	Straight Ahead
Estimated Travel Speed	65 MPH
Vehicle Contributing Circumstances	None

Travel Direction	EB
MV Body Type	Passenger Car (4 door)
Traffic Control Device	None
Events	Ran Off Road Left, Ditch

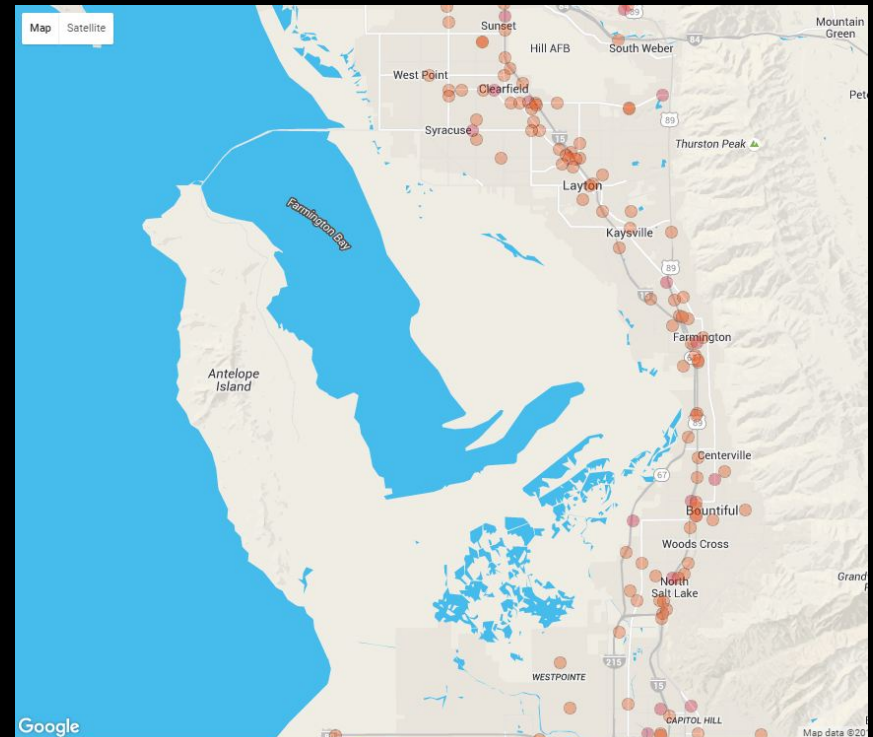
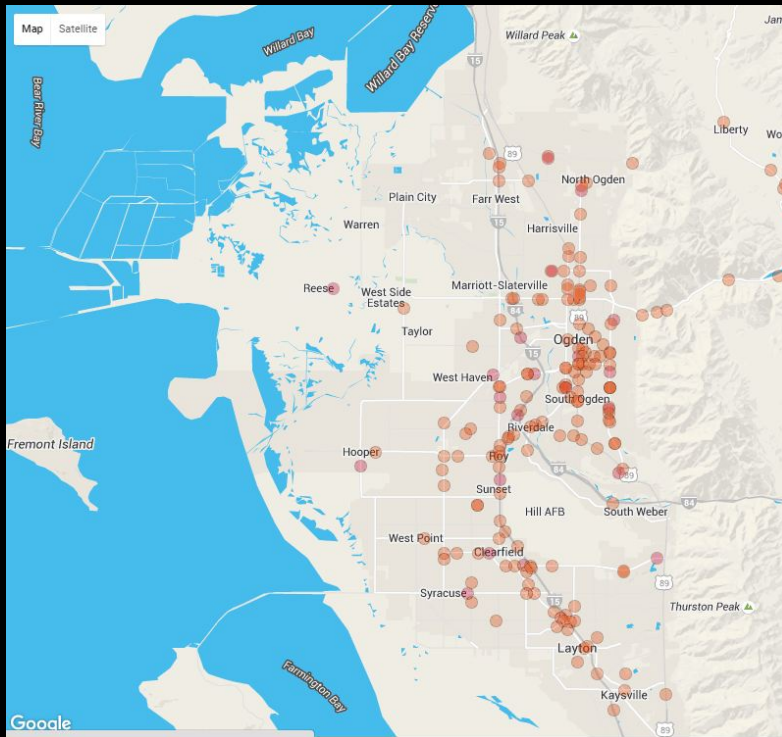


UDOT Crash Prediction Model

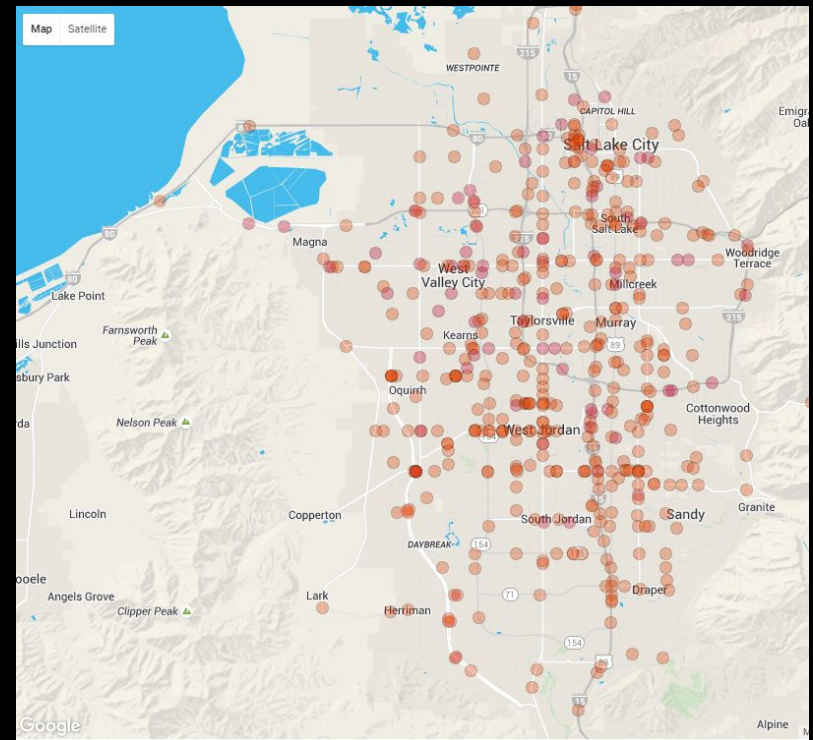
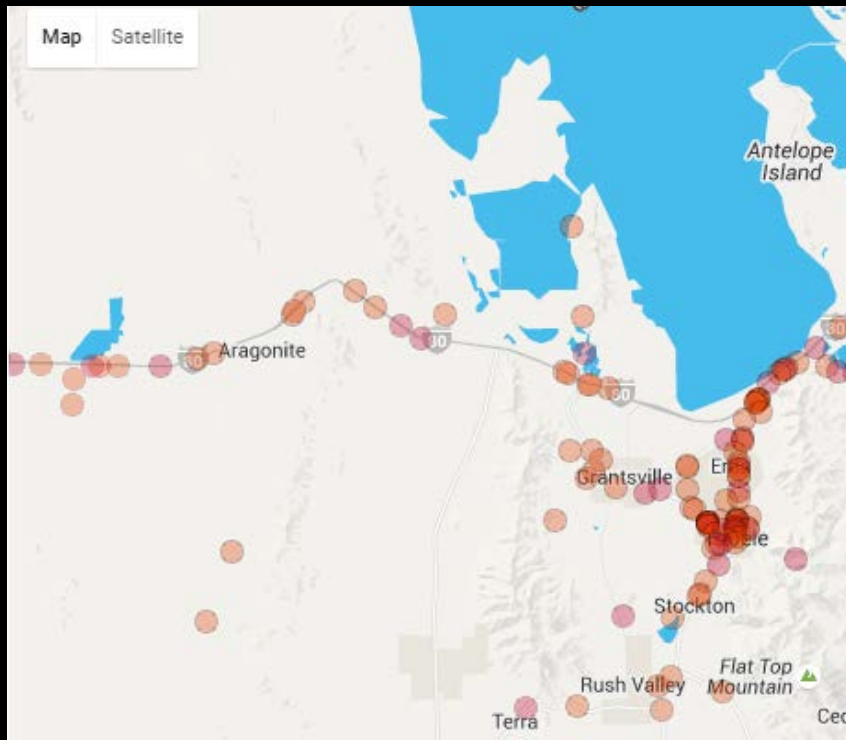
- **Compare**
 - crash rates for similar highway segments
- **Rank**
 - observed crashes vs “expected” crashes
- **Prioritize**
 - projects on higher risk segments



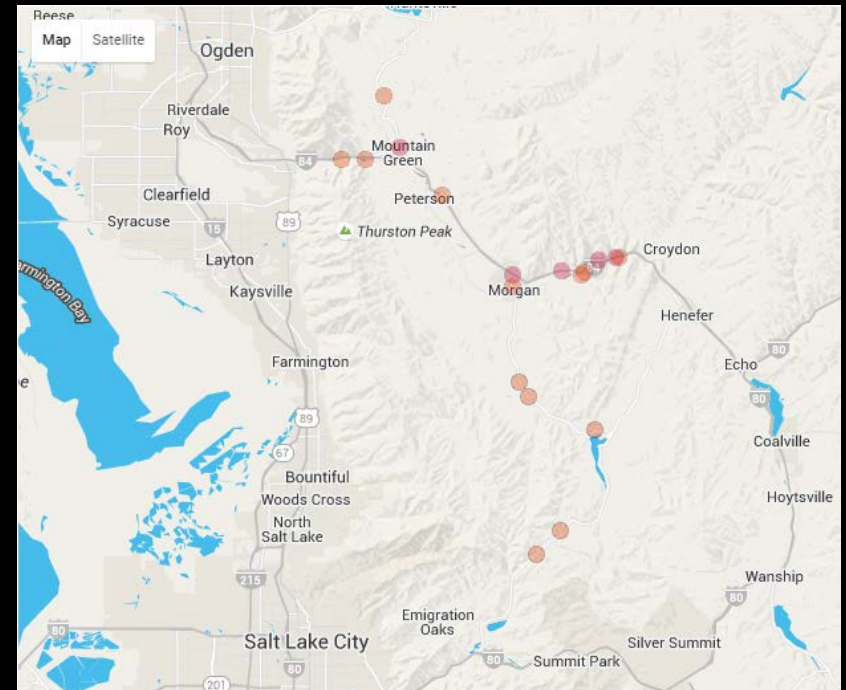
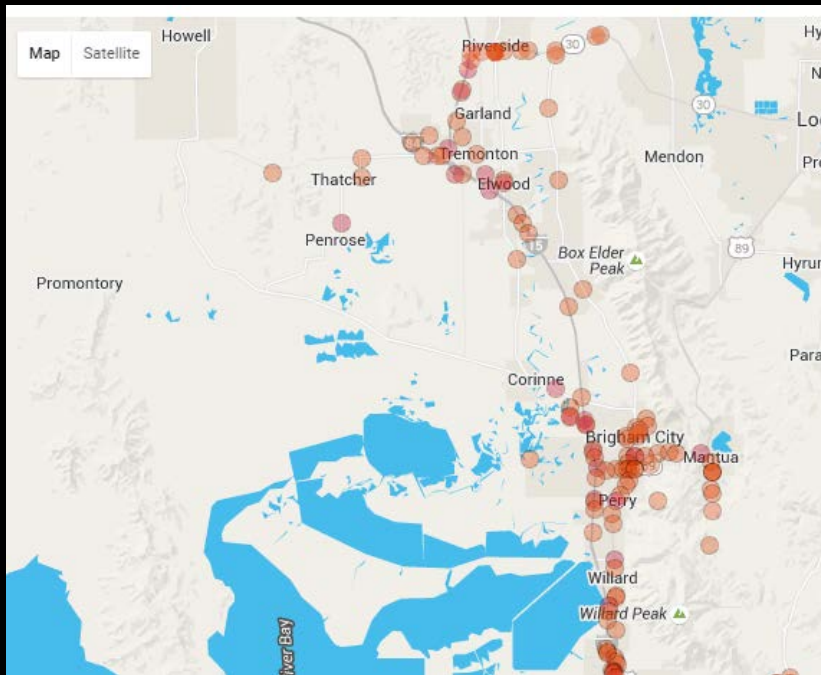
Weber & Davis County Fatal & Serious Injury Crashes 2013-2015



Salt Lake & Tooele County Fatal & Serious Injury Crashes 2013-2015



Box Elder & Morgan County Fatal & Serious Injury Crashes 2013-2015



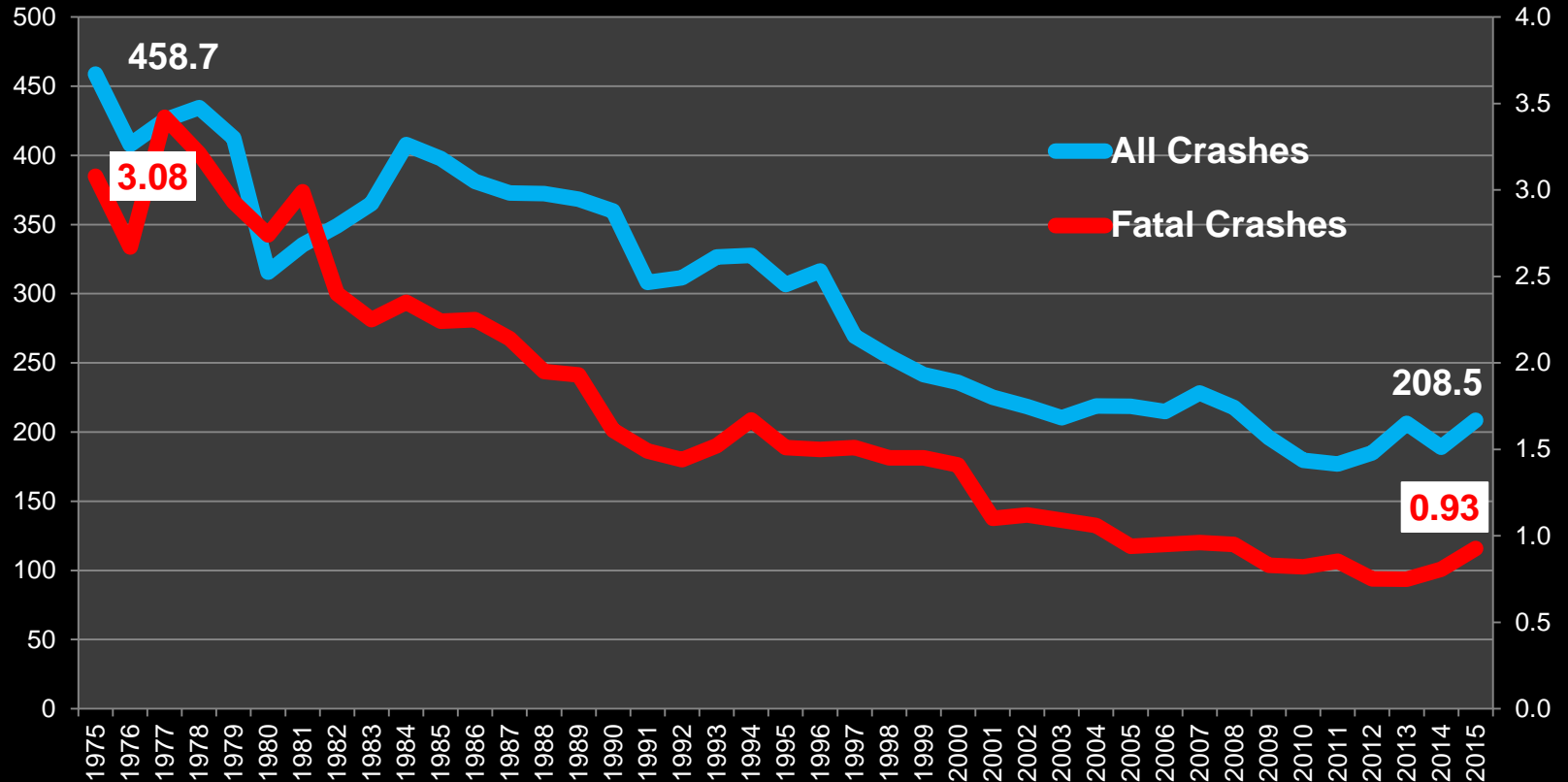
Utah Annual Traffic Fatalities



Utah Department of Public Safety/FARS

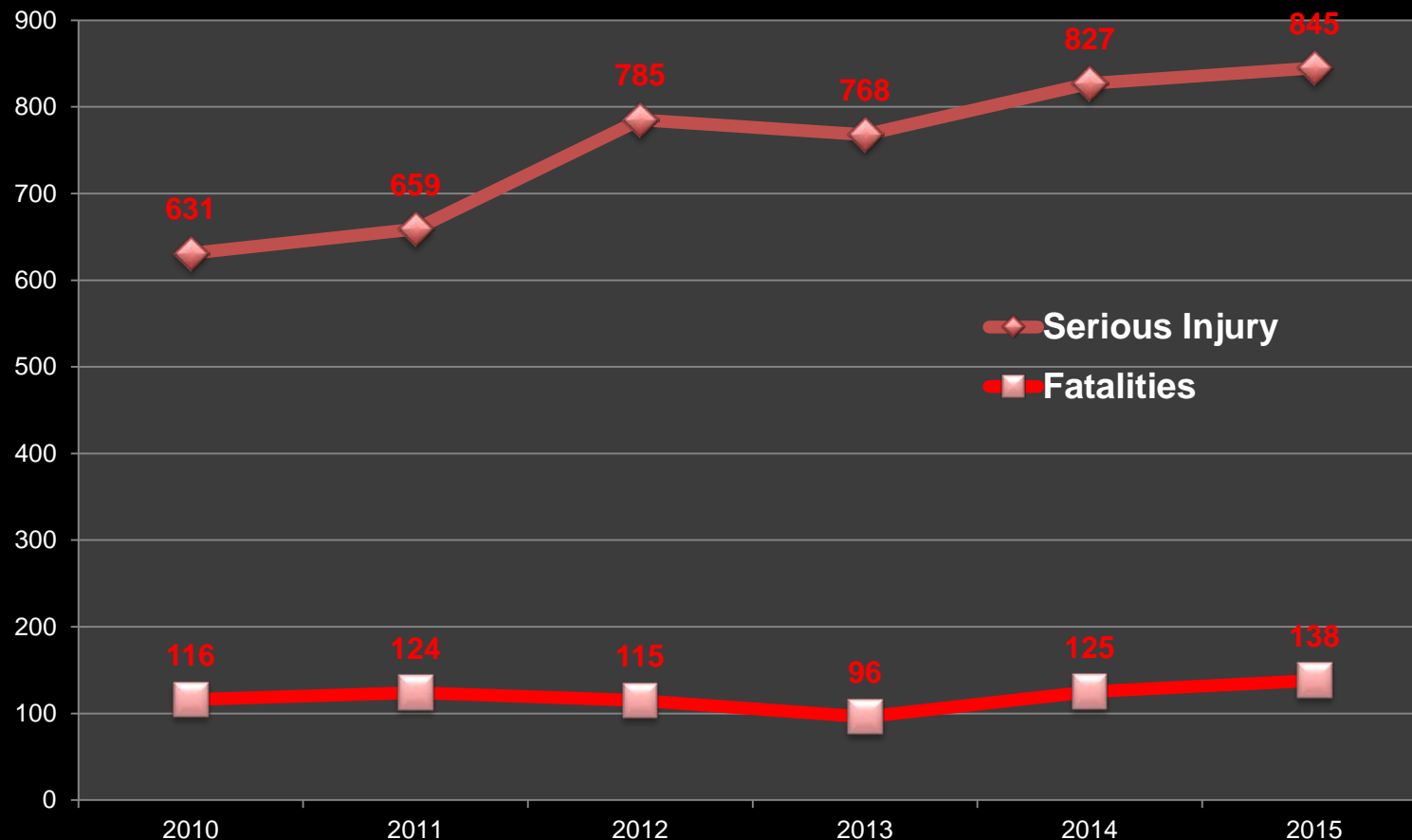
Utah Crash Rate

(crashes per 100,000,000 VMT)

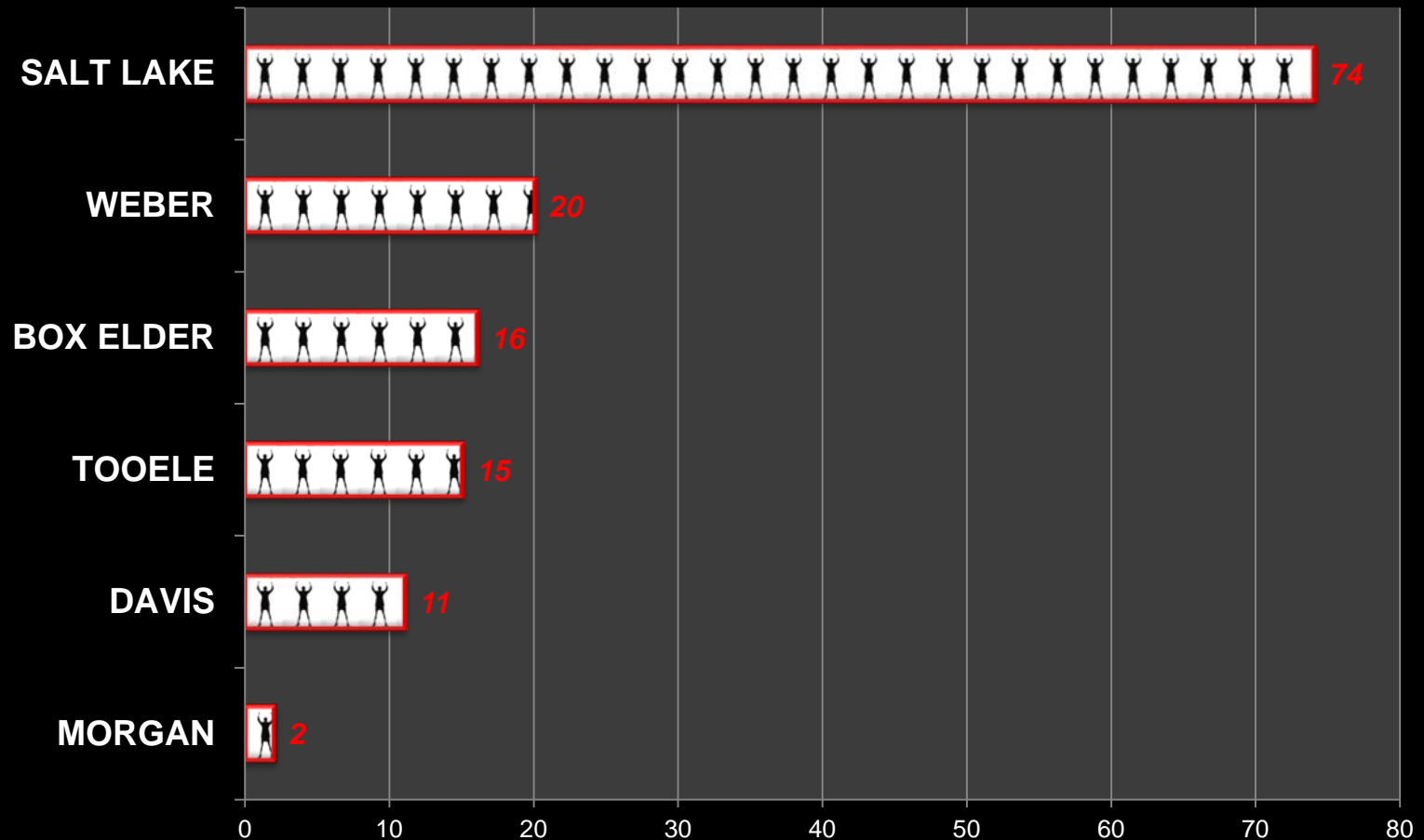


Fatal & Serious Highway Injuries

Weber - Davis - Salt Lake – Tooele – Morgan – Box Elder

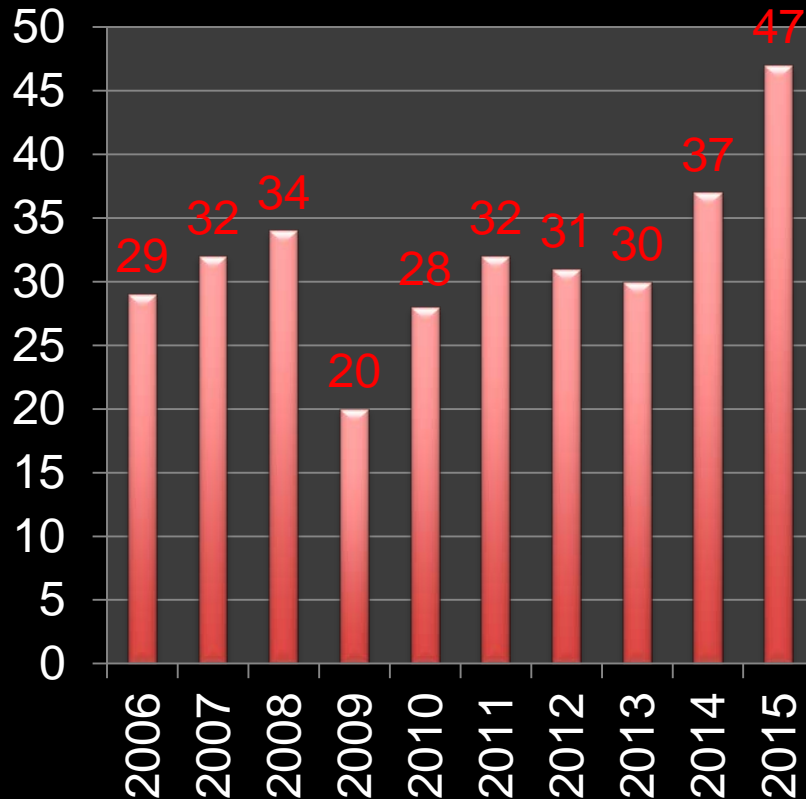


Highway Fatalities 2015

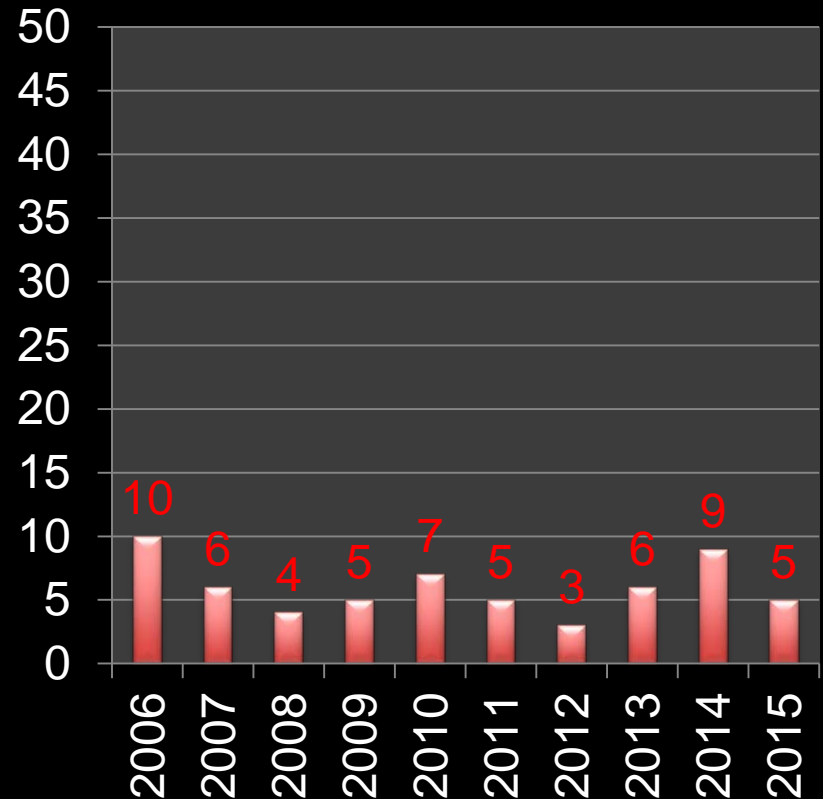


Pedestrian & Bicycle Fatalities

Pedestrians



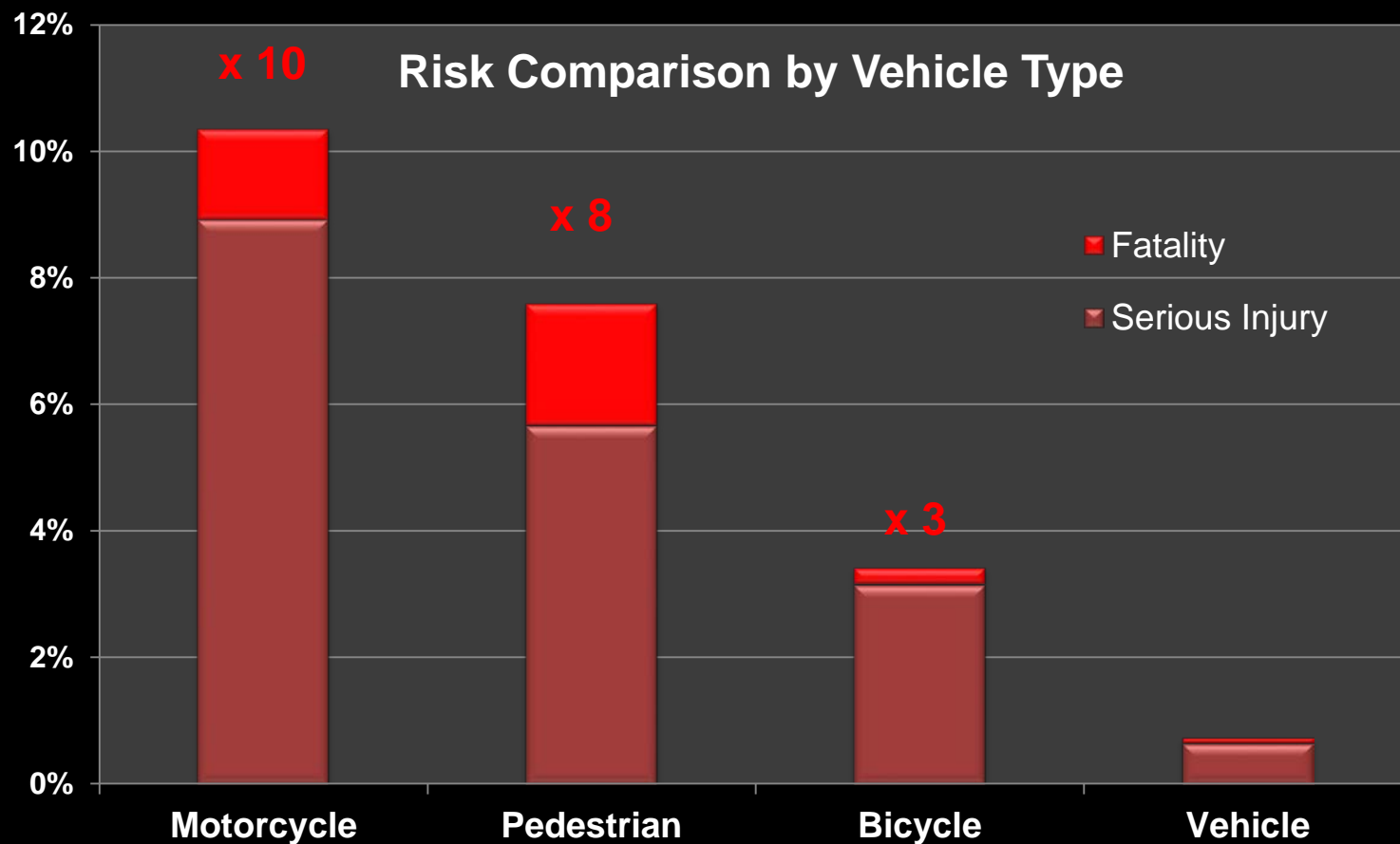
Bicycles



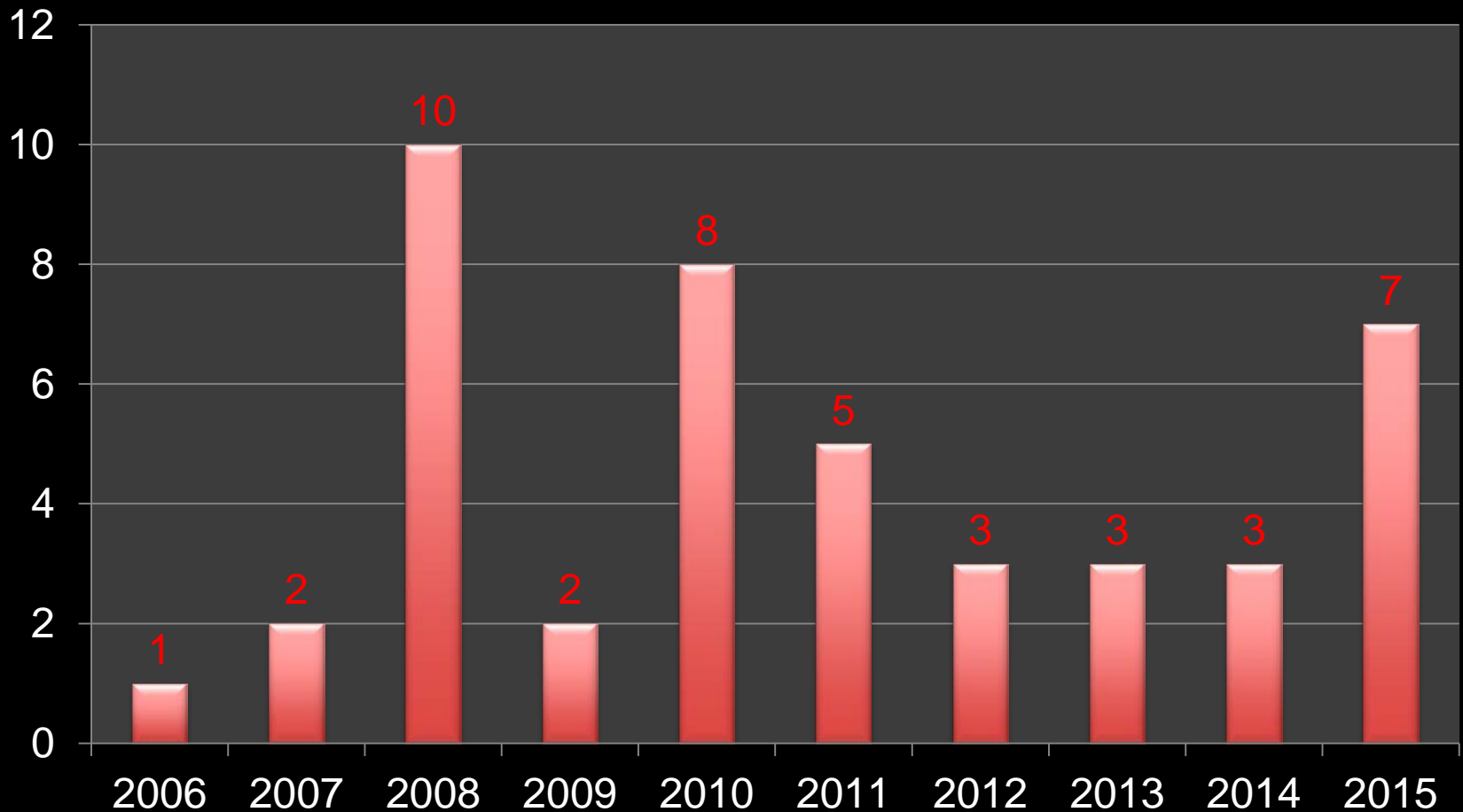
Utah Department of Public Safety/FARS

Fatal & Serious Highway Injuries

Weber - Davis - Salt Lake



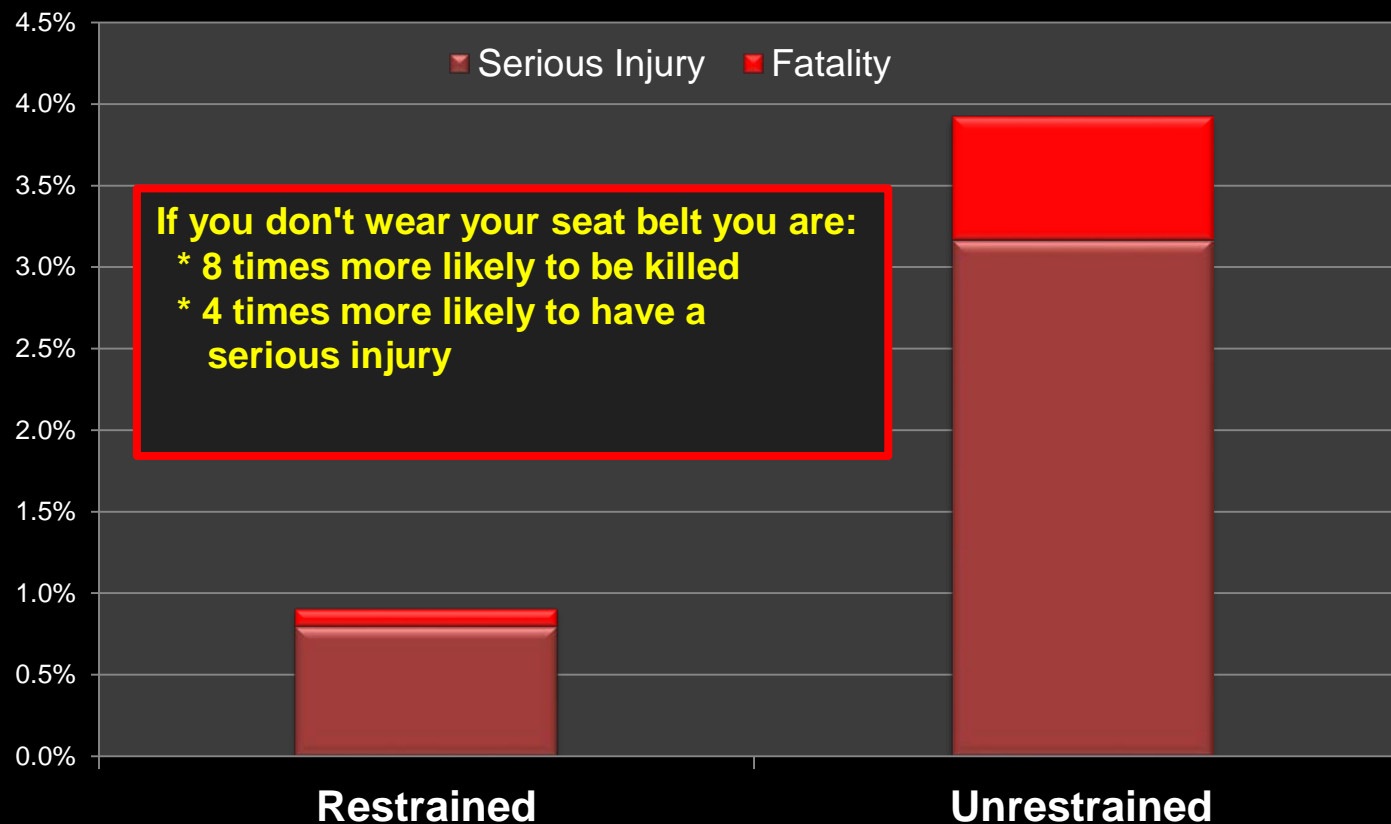
Transit Related Fatalities



Utah Department of Public Safety/FARS

Buckle Up!

Risk Comparison Without Seatbelt



Top Five Behavior Changes to ZERO Fatalities

		2015 Fatalities	Percent
1.	Buckle Up!	86	31%
2.	Drunk driving	75	27%
3.	Aggressive driving (speeding!)	64	23%
4.	Distractions* (cell phones!)	27	10%
5.	Drowsy driving*	14	5%
			97%

** under reported*

Kip Billings
kip@wfrc.org
801.363.4250

QUESTIONS?

Trax & Front Runner

Top 10 Broken Crossing Gate Locations

– 265 broken crossing gates in 2015

