



# Community Advisory Committee Meeting

September 27, 2022 // 5:30 - 7:00 PM



# Agenda

---

- 1** Welcome and Overview
- 2** Introductions
- 3** The Power of Language
- 4** The Wasatch Choice Regional Vision
- 5** Group Photo
- 6** Committee Objectives and Breakout  
Group Discussion
- 7** Announcements and Adjournment

# Agenda

---

- 1** Welcome and Overview
- 2 Introductions
- 3 The Power of Language
- 4 The Wasatch Choice Regional Vision
- 5 Group Photo
- 6 Committee Objectives and Breakout  
Group Discussion
- 7 Announcements and Adjournment

# Agenda

---

- 1 Welcome and Overview
- 2** Introductions
- 3 The Power of Language
- 4 The Wasatch Choice Regional Vision
- 5 Group Photo
- 6 Committee Objectives and Breakout  
Group Discussion
- 7 Announcements and Adjournment



# Introductions

Name

Description of Organization you serve or associated with

One thing that drew you to serve on the WC Community  
Advisory Committee

# Agenda

---

- 1 Welcome and Overview
- 2 Introductions
- 3 The Power of Language**
- 4 The Wasatch Choice Regional Vision
- 5 Group Photo
- 6 Committee Objectives and Breakout  
Group Discussion
- 7 Announcements and Adjournment

# Agenda

---

- 1 Welcome and Overview
- 2 Introductions
- 3 The Power of Language
- 4** The Wasatch Choice Regional Vision
- 5 Group Photo
- 6 Committee Objectives and Breakout  
Group Discussion
- 7 Announcements and Adjournment

“Utah is growing..... and we have a plan”



**MAG**  
Expert Resources. Enriching Lives.

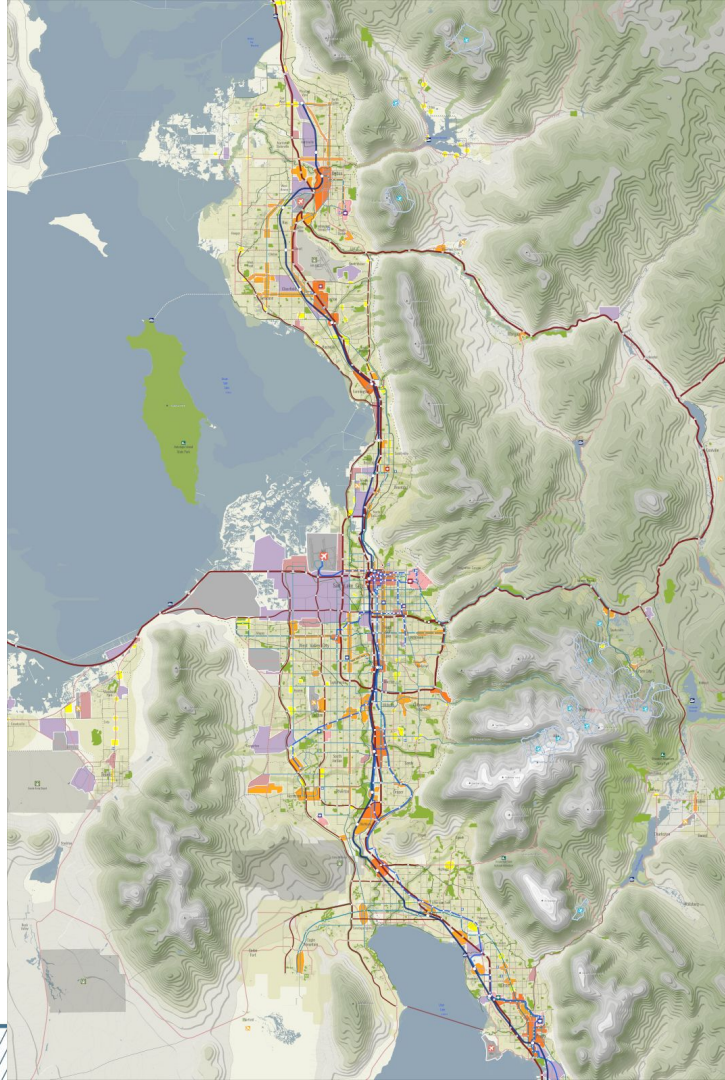


## Partners of the Vision

The Wasatch Choice 2050 Vision is built on community values and public input, shaping the desired future for the region. The following organizations facilitated this process:

- ▣▣▣▣ Wasatch Front Regional Council
- ▣▣▣▣ Mountainland Association of Governments
- ▣▣▣▣ Chambers of Commerce
- ▣▣▣▣ Envision Utah
- ▣▣▣▣ Kem C. Gardner Policy Institute
- ▣▣▣▣ Metropolitan Research Center at The University of Utah
- ▣▣▣▣ Utah Association of Counties
- ▣▣▣▣ Utah Department of Transportation
- ▣▣▣▣ Utah League of Cities and Towns
- ▣▣▣▣ Utah Transit Authority





## Local Vision

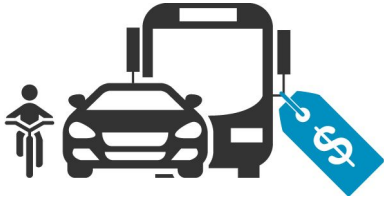


## Regional Transportation Plan



# Four Key Strategies

---



1

Provide transportation  
choices



2

Support housing  
options



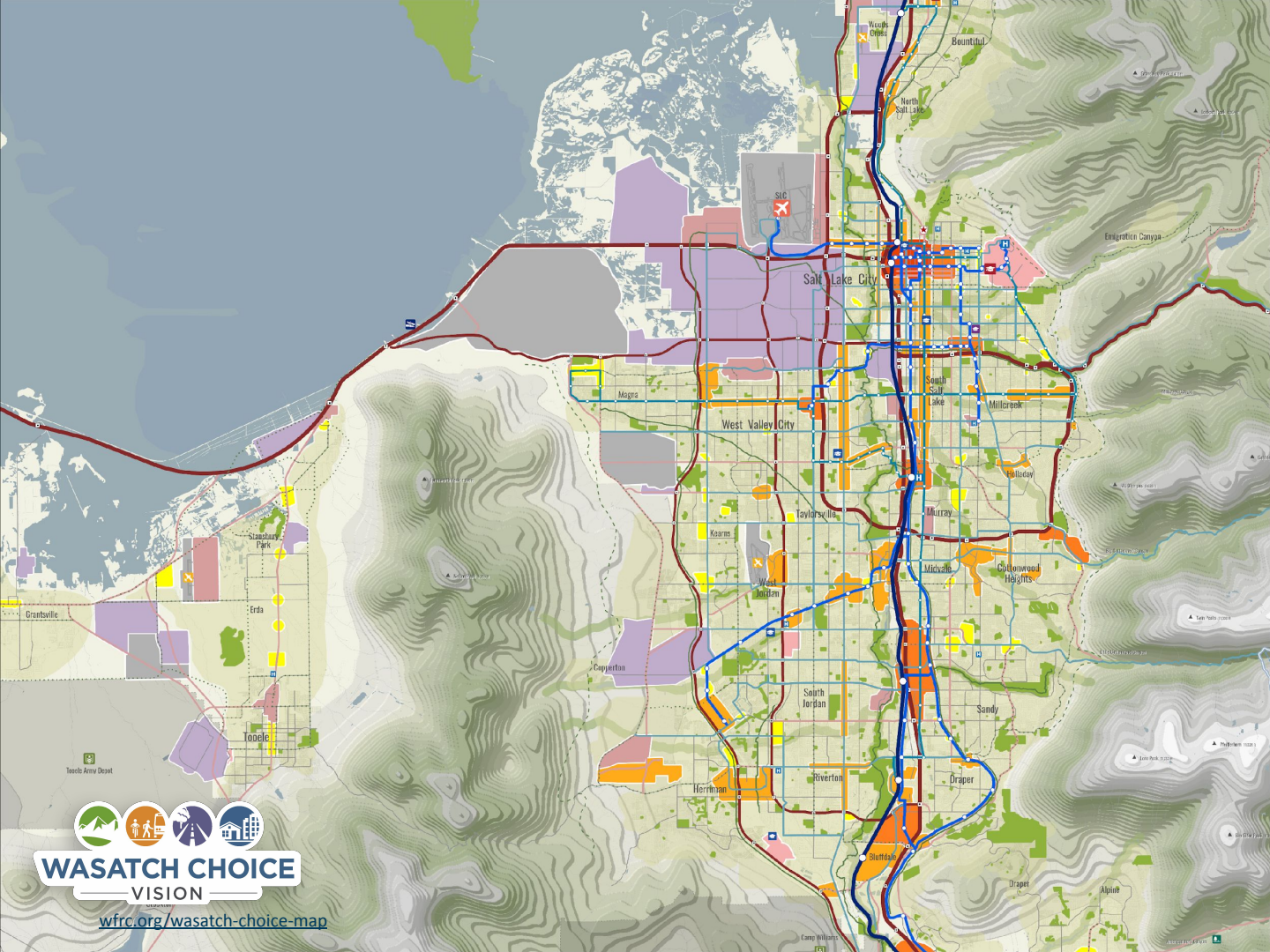
3

Preserve open  
space



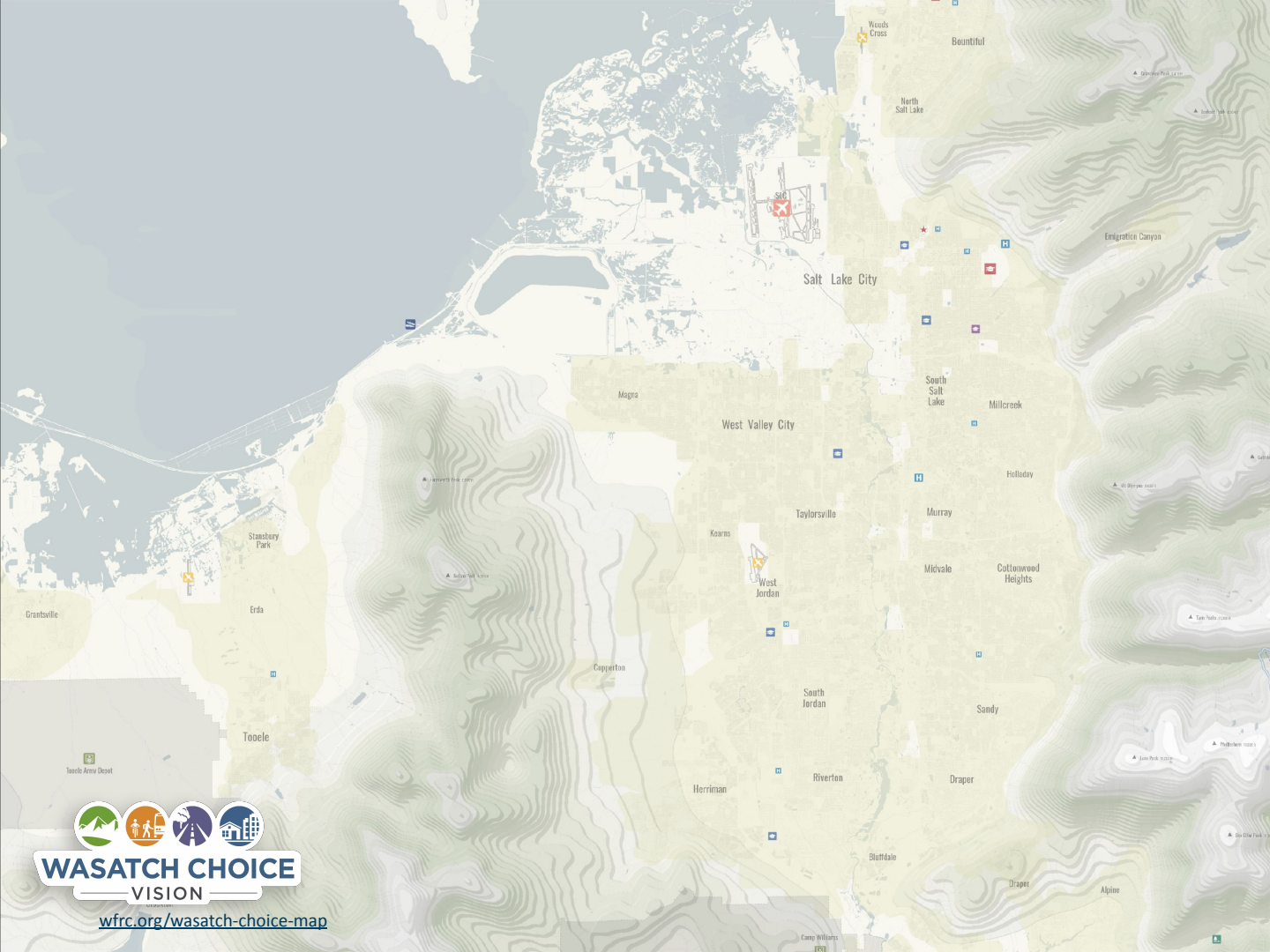
4

Link economic  
development with  
transportation and  
housing decisions



# WASATCH CHOICE VISION

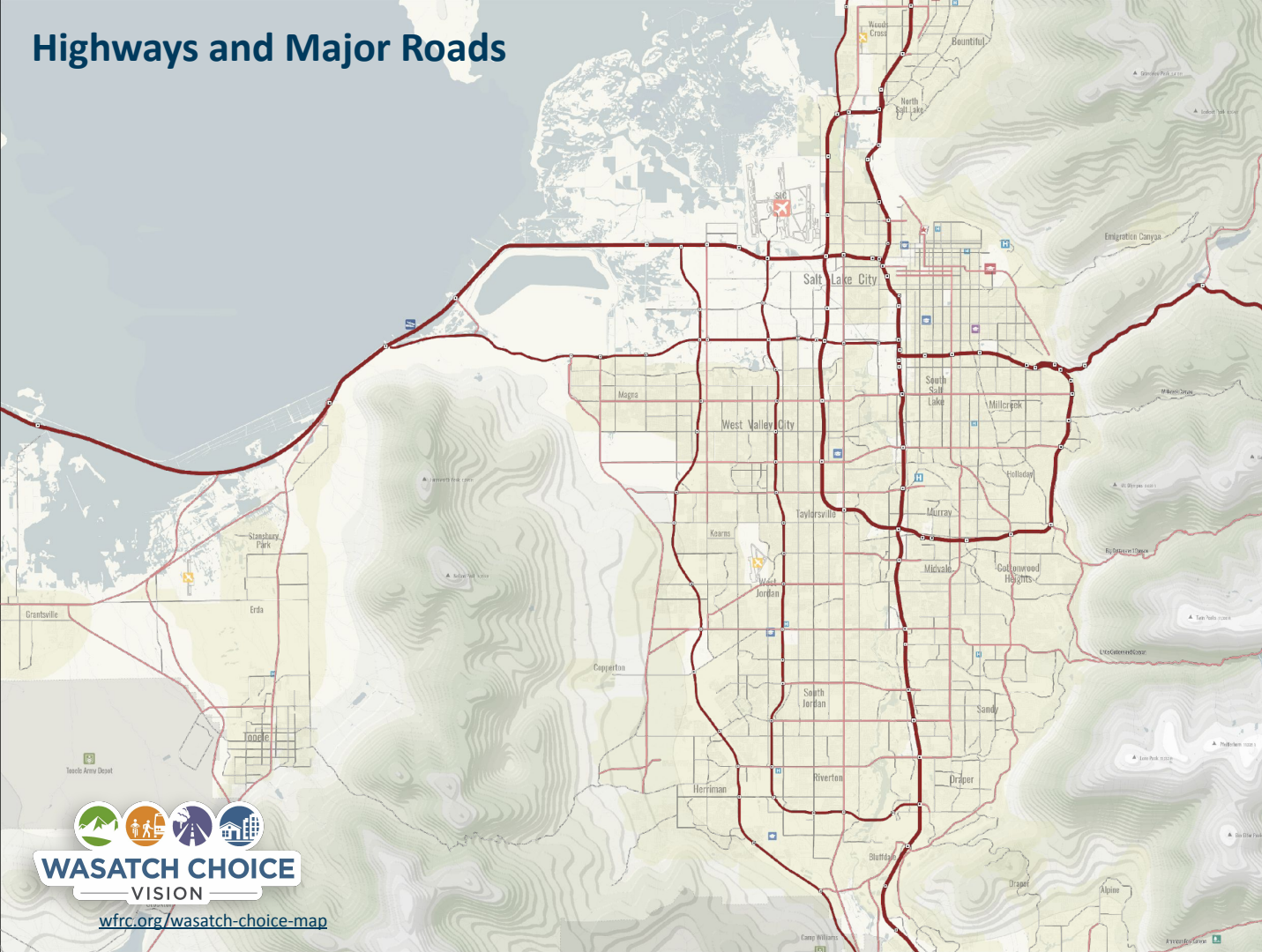
[wfrc.org/wasatch-choice-map](http://wfrc.org/wasatch-choice-map)



[wfr.org/wasatch-choice-map](http://wfr.org/wasatch-choice-map)



# Highways and Major Roads

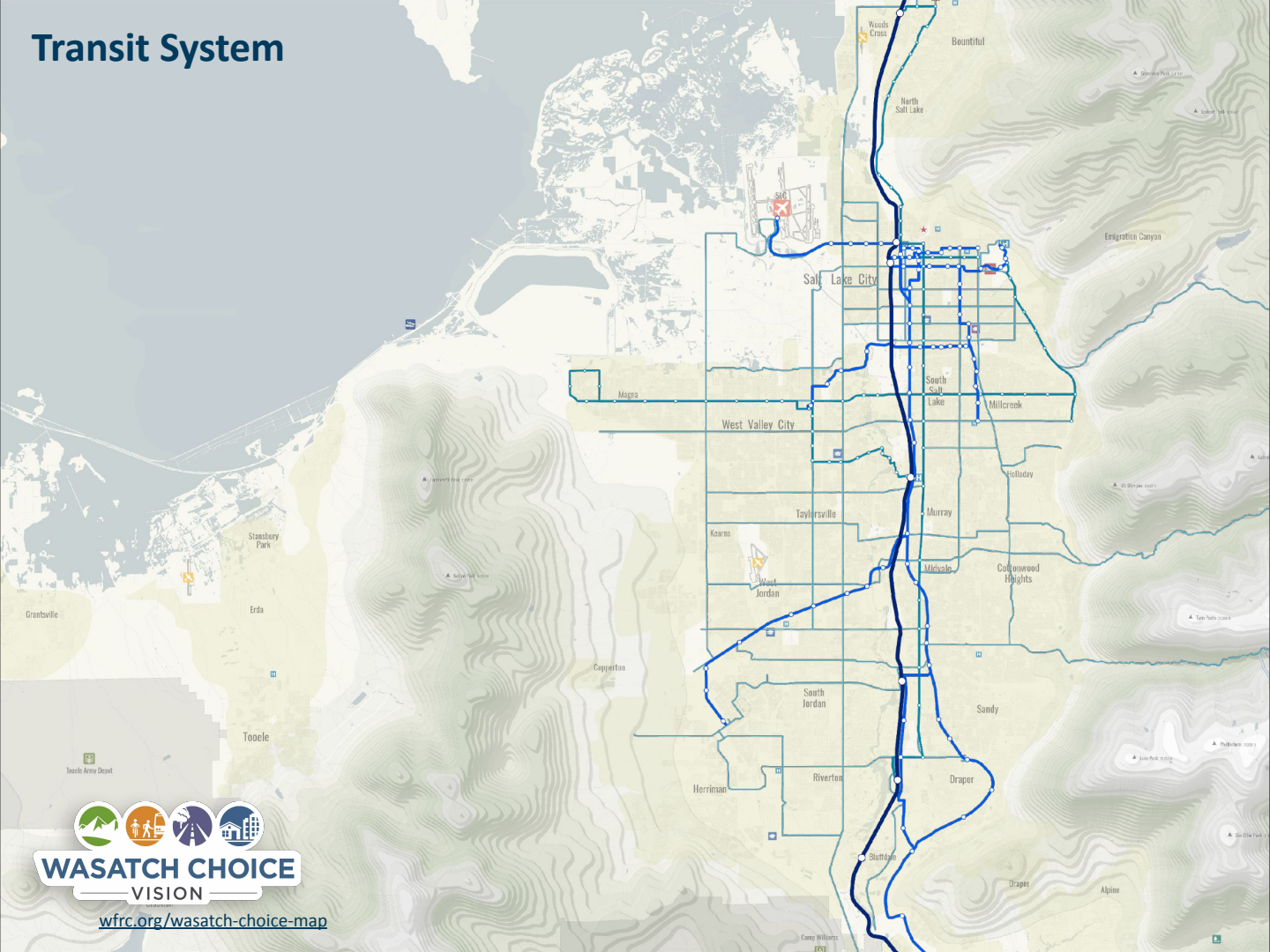


**WASATCH CHOICE**  
VISION

[wfrc.org/wasatch-choice-map](http://wfrc.org/wasatch-choice-map)



# Transit System

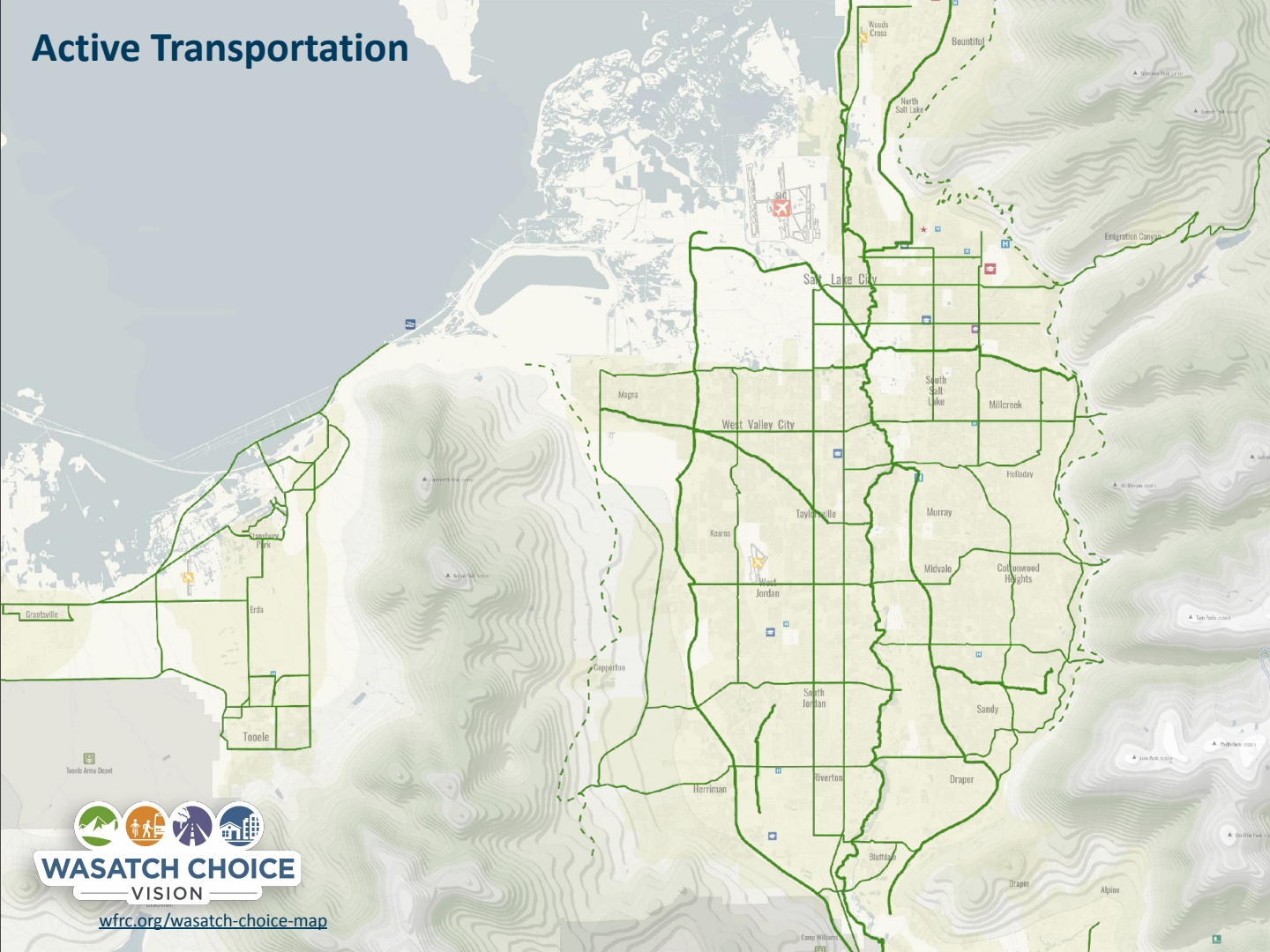


**WASATCH CHOICE**  
VISION

[wfr.org/wasatch-choice-map](http://wfr.org/wasatch-choice-map)



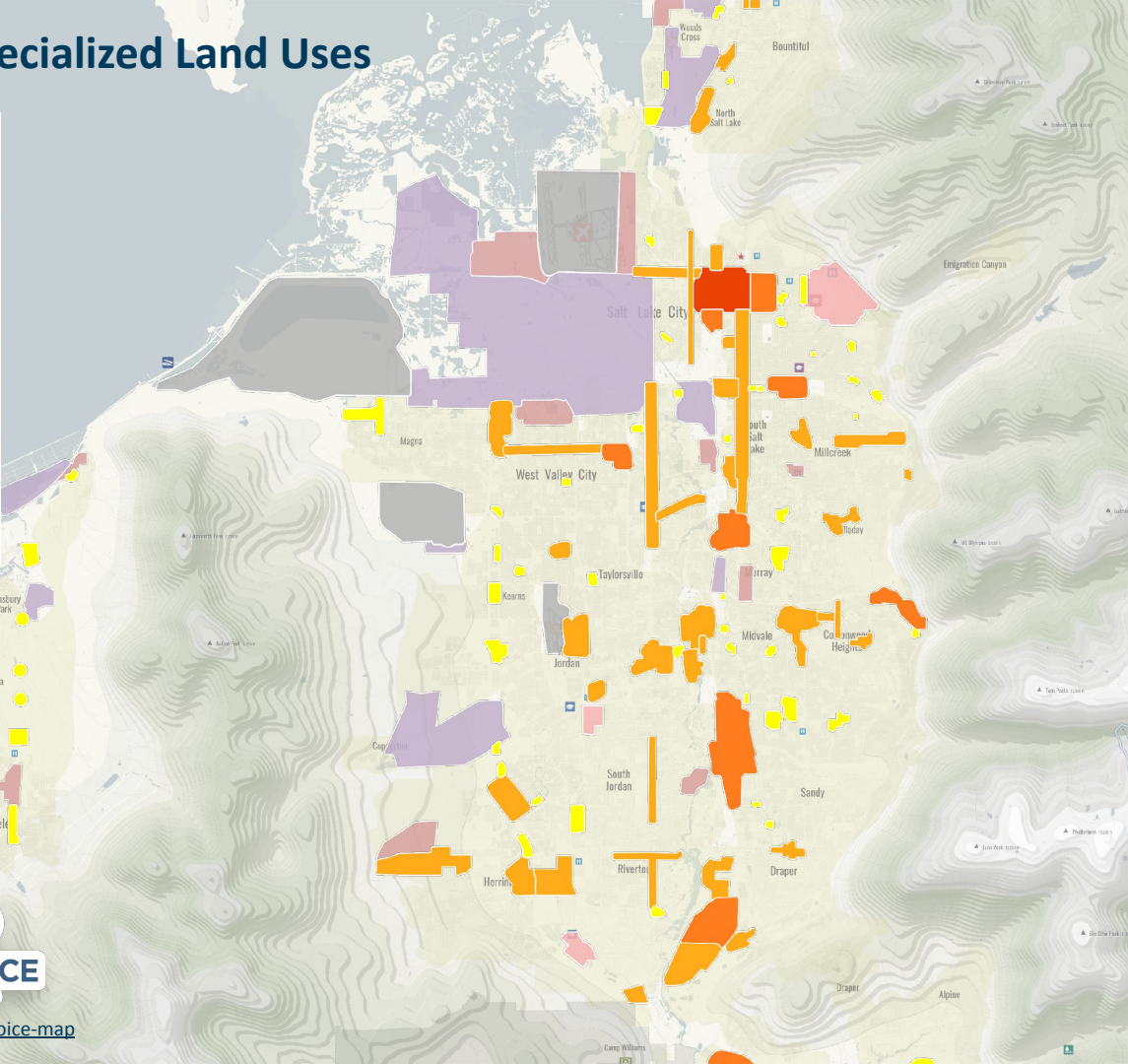
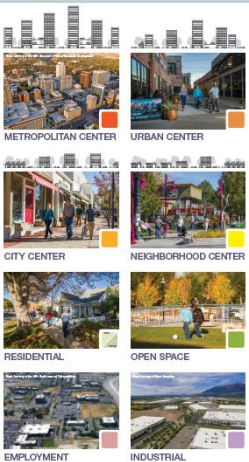
# Active Transportation



**WASATCH CHOICE**  
VISION

[wfrc.org/wasatch-choice-map](http://wfrc.org/wasatch-choice-map)

# Centers & Specialized Land Uses

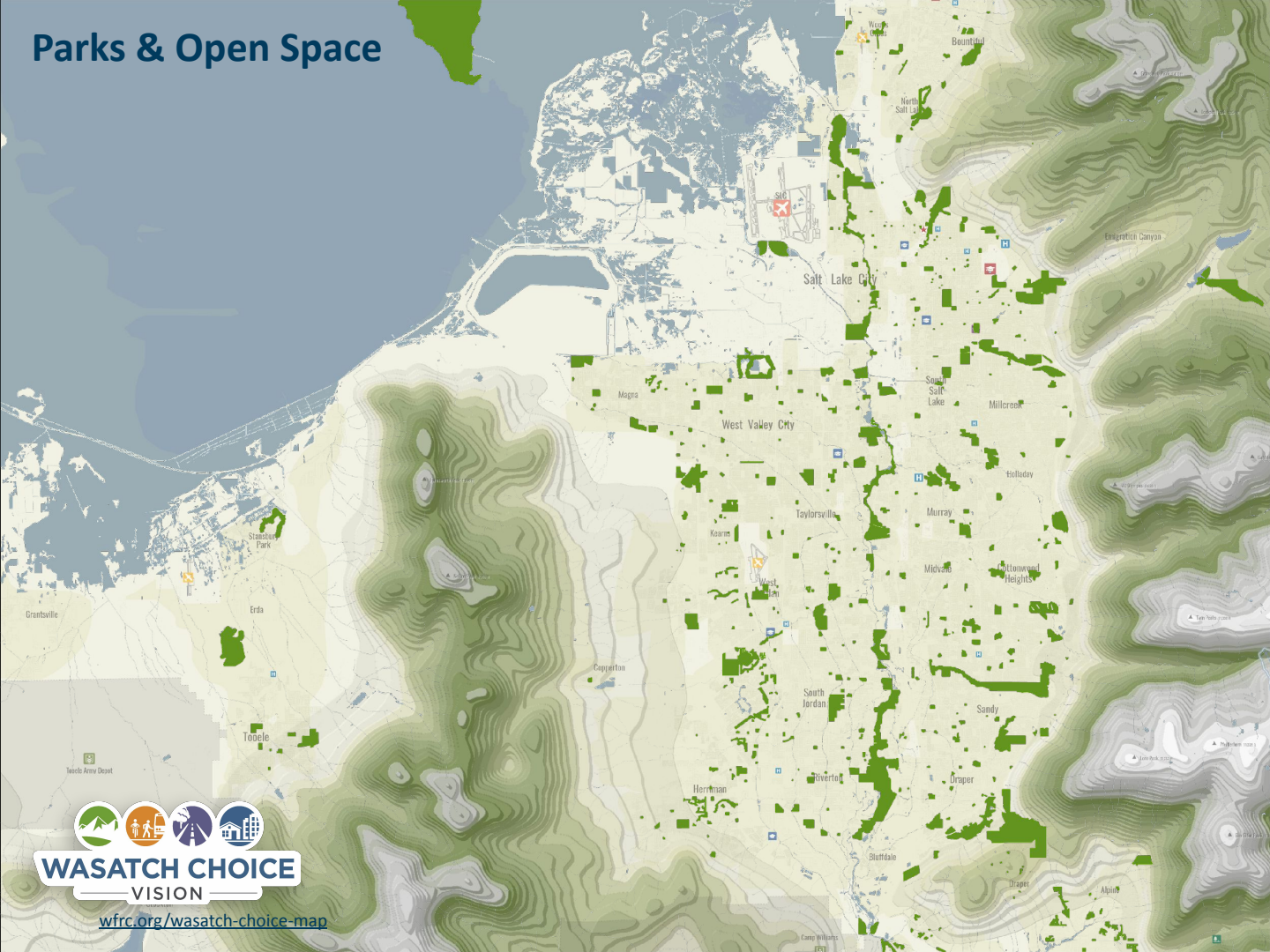


**WASATCH CHOICE**  
VISION

[wfr.org/wasatch-choice-map](http://wfr.org/wasatch-choice-map)



# Parks & Open Space



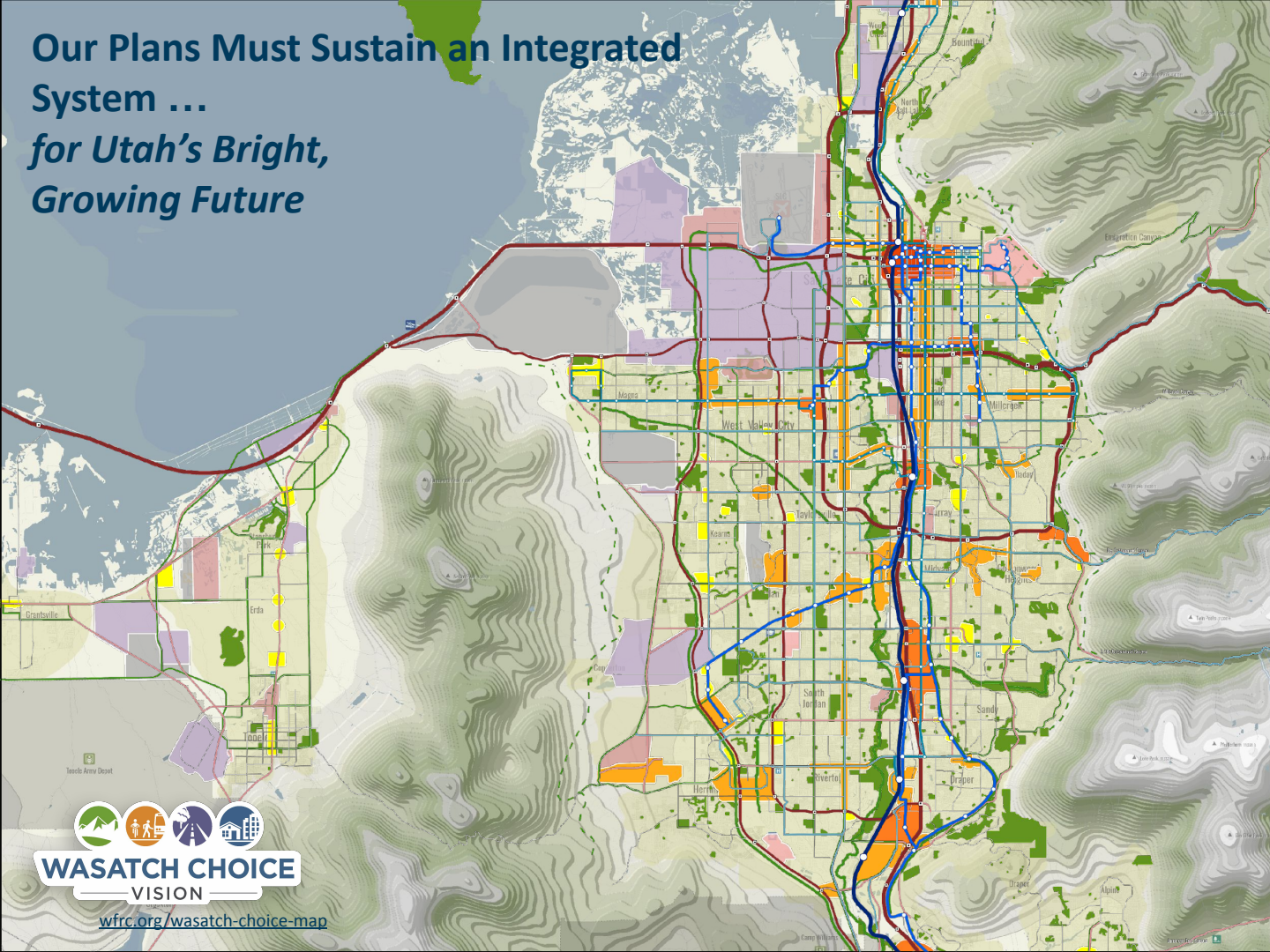
**WASATCH CHOICE**  
VISION

[wfr.org/wasatch-choice-map](http://wfr.org/wasatch-choice-map)



WASATCH FRONT REGIONAL COUNCIL

# Our Plans Must Sustain an Integrated System ... for Utah's Bright, Growing Future



**WASATCH CHOICE**  
VISION

[wfrc.org/wasatch-choice-map](http://wfrc.org/wasatch-choice-map)





# Agenda

---

- 1 Welcome and Overview
- 2 Introductions
- 3 The Power of Language
- 4 The Wasatch Choice Regional Vision
- 5 Group Photo**
- 6 Committee Objectives and Breakout  
Group Discussion
- 7 Announcements and Adjournment

---

# Group Photo

# Agenda

---

- 1 Welcome and Overview
- 2 Introductions
- 3 The Power of Language
- 4 The Wasatch Choice Regional Vision
- 5 Group Photo
- 6** Committee Objectives and Breakout  
Group Discussion
- 7 Announcements and Adjournment

# Committee Purpose...

---

*The Wasatch Choice Community Advisory Committee will enhance relationships for better cross-agency collaboration and community partnership with organizations and community leaders that represent those with limited income, communities of color, populations with disabilities, elderly and youth populations.*

*The Advisory Committee creates a space for discussing regional transportation and land use issues. This may include progress related to long- and short-range transportation planning and investment, technical planning assistance related to land use and transportation, and data and analytics tools that might support the communities in which these local partners serve. Engaging people with a diversity of perspectives and experiences will help to ensure that our policies and practices are best serving our community, now and in the future.*

# Draft Objectives

---

1. **Transportation partners will inform on Wasatch Choice plans and programs and create a space for learning on transportation and land use efforts**
2. The Committee will advise transportation partners on planning efforts relevant to the needs of populations throughout the Wasatch Front region
3. The Committee will advise transportation partners on new avenues for outreach and public engagement for the Wasatch Choice Vision and related transportation and land use efforts
4. Transportation partners will regularly share plans, studies, and programs with the Committee in efforts to increase awareness and spread the word with members of their communities
5. The Committee will communicate identified issues that the transportation partners may not have considered and work to address concerns in planning efforts



# Draft Objectives

---

1. Transportation partners will inform on Wasatch Choice plans and programs and create a space for learning on transportation and land use efforts
2. **The Committee will advise transportation partners on planning efforts relevant to the needs of populations throughout the Wasatch Front region**
3. The Committee will advise transportation partners on new avenues for outreach and public engagement for the Wasatch Choice Vision and related transportation and land use efforts
4. Transportation partners will regularly share plans, studies, and programs with the Committee in efforts to increase awareness and spread the word with members of their communities
5. The Committee will communicate identified issues that the transportation partners may not have considered and work to address concerns in planning efforts

# Draft Objectives

---

1. Transportation partners will inform on Wasatch Choice plans and programs and create a space for learning on transportation and land use efforts
2. The Committee will advise transportation partners on planning efforts relevant to the needs of populations throughout the Wasatch Front region
- 3. The Committee will advise transportation partners on new avenues for outreach and public engagement for the Wasatch Choice Vision and related transportation and land use efforts**
4. Transportation partners will regularly share plans, studies, and programs with the Committee in efforts to increase awareness and spread the word with members of their communities
5. The Committee will communicate identified issues that the transportation partners may not have considered and work to address concerns in planning efforts

# Draft Objectives

---

1. Transportation partners will inform on Wasatch Choice plans and programs and create a space for learning on transportation and land use efforts
2. The Committee will advise transportation partners on planning efforts relevant to the needs of populations throughout the Wasatch Front region
3. The Committee will advise transportation partners on new avenues for outreach and public engagement for the Wasatch Choice Vision and related transportation and land use efforts
- 4. Transportation partners will regularly share plans, studies, and programs with the Committee in efforts to increase awareness and spread the word with members of their communities**
5. The Committee will communicate identified issues that the transportation partners may not have considered and work to address concerns in planning efforts

# Draft Objectives

---

1. Transportation partners will inform on Wasatch Choice plans and programs and create a space for learning on transportation and land use efforts
2. The Committee will advise transportation partners on planning efforts relevant to the needs of populations throughout the Wasatch Front region
3. The Committee will advise transportation partners on new avenues for outreach and public engagement for the Wasatch Choice Vision and related transportation and land use efforts
4. Transportation partners will regularly share plans, studies, and programs with the Committee in efforts to increase awareness and spread the word with members of their communities
5. **The Committee will communicate identified issues that the transportation partners may not have considered and work to address concerns in planning efforts**

---

# Breakout Group Discussions

# Agenda

---

- 1 Welcome and Overview
- 2 Introductions
- 3 The Power of Language
- 4 The Wasatch Choice Regional Vision
- 5 Group Photo
- 6 Committee Objectives and Breakout  
Group Discussion
- 7** Announcements and Adjournment



# Community Advisory Committee Meeting

Thank you!

