



Wasatch Choice Community Advisory Committee Meeting 2

December 6, 2022 // 5:30-7:00 PM



Agenda

- 1** Welcome and (Re)introductions
- 2** Shared Committee Objectives
- 3** Wasatch Choice Vision
- 4** Committee Member Share
- 5** 2023-2050 Draft Regional Transportation Plans
- 6** Announcements

Agenda

- 1 Welcome and (Re)introductions
- 2 Shared Committee Objectives**
- 3 Wasatch Choice Vision
- 4 Committee Member Share: Lia Baez
- 5 2023-2050 Draft Regional Transportation Plans
- 6 Announcements

Committee Objectives

Planning:

- A. Transportation partners will inform the Advisory Committee on Wasatch Choice Vision plans and programs and create a space for learning about transportation and land use efforts
 - a. *Space for learning will be created through our meetings*
 - b. *Tools and resources will be shared on an ongoing basis*

- B. The Advisory Committee will advise transportation partners on planning efforts relevant to the needs and lived experiences of diverse communities throughout the Wasatch Front region

Shared Committee Objectives

Planning:

- A. Transportation partners will inform the Advisory Committee on Wasatch Choice Vision plans and programs and create a space for learning about transportation and land use efforts
 - a. *Space for learning will be created through our meetings*
 - b. *Tools and resources will be shared on an ongoing basis*

- B. The Advisory Committee will advise transportation partners on planning efforts relevant to the needs and lived experiences of diverse communities throughout the Wasatch Front region

Outreach and engagement:

- C. Transportation partners will regularly share plans, studies, and programs, along with supportive materials and resources with the Advisory Committee to share with the community.

- D. The Advisory Committee will (i) advise transportation partners on new avenues for outreach and public engagement for the Wasatch Choice Vision and related transportation and land use efforts, and will (ii) increase awareness and spread the word with members of their communities.

Shared Committee Objectives

Planning:

- A. Transportation partners will inform the Advisory Committee on Wasatch Choice Vision plans and programs and create a space for learning about transportation and land use efforts
 - a. *Space for learning will be created through our meetings*
 - b. *Tools and resources will be shared on an ongoing basis*

- B. The Advisory Committee will advise transportation partners on planning efforts relevant to the needs and lived experiences of diverse communities throughout the Wasatch Front region

Outreach and engagement:

- C. Transportation partners will regularly share plans, studies, and programs, along with supportive materials and resources with the Advisory Committee to share with the community.

- D. The Advisory Committee will (i) advise transportation partners on new avenues for outreach and public engagement for the Wasatch Choice Vision and related transportation and land use efforts, and will (ii) increase awareness and spread the word with members of their communities.

Responsibility:

- E. The Advisory Committee will communicate issues and ideas, related to transportation and land use, to the transportation partners. The transportation partners will work with the Advisory Committee to consider issues identified through planning efforts.

Shared Committee Objectives

Planning:

- A. Transportation partners will inform the Advisory Committee on Wasatch Choice Vision plans and programs and create a space for learning about transportation and land use efforts
 - a. *Space for learning will be created through our meetings*
 - b. *Tools and resources will be shared on an ongoing basis*

- B. The Advisory Committee will advise transportation partners on planning efforts relevant to the needs and lived experiences of diverse communities throughout the Wasatch Front region

Outreach and engagement:

- C. Transportation partners will regularly share plans, studies, and programs, along with supportive materials and resources with the Advisory Committee to share with the community.

- D. The Advisory Committee will (i) advise transportation partners on new avenues for outreach and public engagement for the Wasatch Choice Vision and related transportation and land use efforts, and will (ii) increase awareness and spread the word with members of their communities.

Responsibility:

- E. The Advisory Committee will communicate issues and ideas, related to transportation and land use, to the transportation partners. The transportation partners will work with the Advisory Committee to consider issues identified through planning efforts.



Today's call to action: Gather your ideas on how to further engage with broader communities on the Draft 2023-2050 RTPs

Agenda

- 1 Welcome and (Re)introductions
- 2 Shared Committee Objectives
- 3 Wasatch Choice Vision**
- 4 Committee Member Share
- 5 2023-2050 Draft Regional Transportation Plans
- 6 Announcements



WASATCH CHOICE

VISION

Agenda

- 1 Welcome and (Re)introductions
- 2 Shared Committee Objectives
- 3 Wasatch Choice Vision
- 4 Committee Member Share**
- 5 2023-2050 Draft Regional Transportation Plans
- 6 Announcements

Agenda

- 1 Welcome and (Re)introductions
- 2 Shared Committee Objectives
- 3 Wasatch Choice Vision
- 4 Committee Member Share
- 5 2023-2050 Draft Regional Transportation Plans**
- 6 Announcements



WASATCH CHOICE

— VISION —

Local Land Use

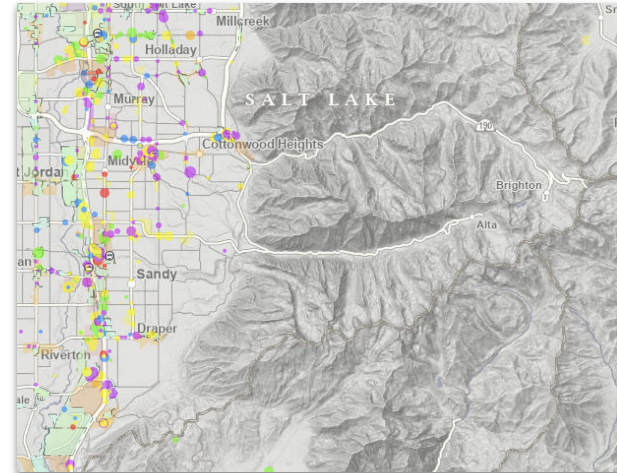
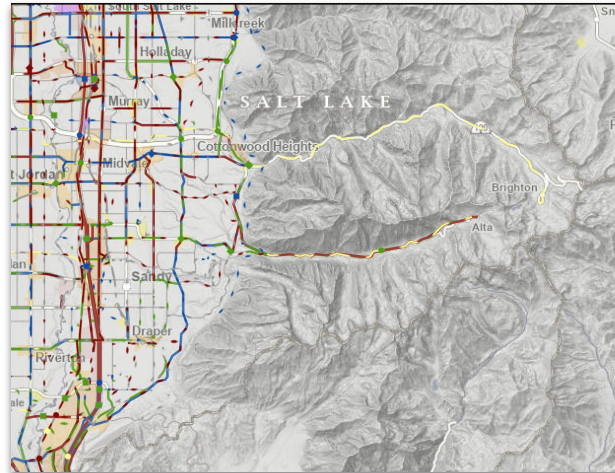
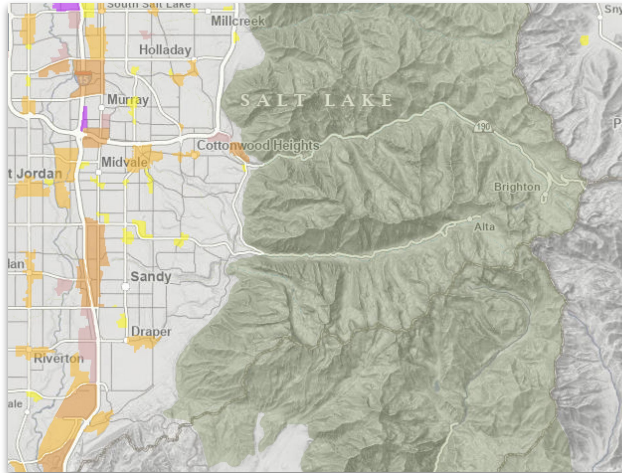
.....

Regional Transportation Plan

.....

Economic Activity

.....





Cities &
Counties



The Metropolitan Planning Organizations

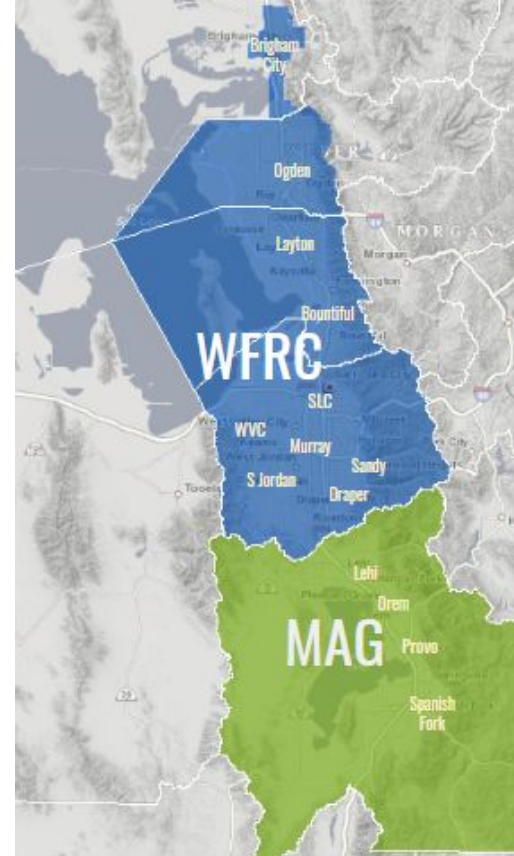


WASATCH FRONT REGIONAL COUNCIL



MAG

Expert Resources. Enriching Lives.



Regional Transportation Plan in a



Four-Year Cycle



Financially
Constrained



Air Quality

Phasing is the
anticipated timing of
construction



What's in the Regional Transportation Plan?



Access to Opportunities (a.k.a. ATO, Accessibility)

“A framework for evaluating how well people can connect to employment, basic needs & community amenities.”



Mobility -- speed of travel

Access to Opportunities (a.k.a. ATO, Accessibility)

“A framework for evaluating how well people can connect to employment, basic needs & community amenities.”



Mobility -- speed of travel

+



Proximity -- distance apart

Access to Opportunities (a.k.a. ATO, Accessibility)

“A framework for evaluating how well people can connect to employment, basic needs & community amenities.”



Mobility -- speed of travel

+



Proximity -- distance apart

=



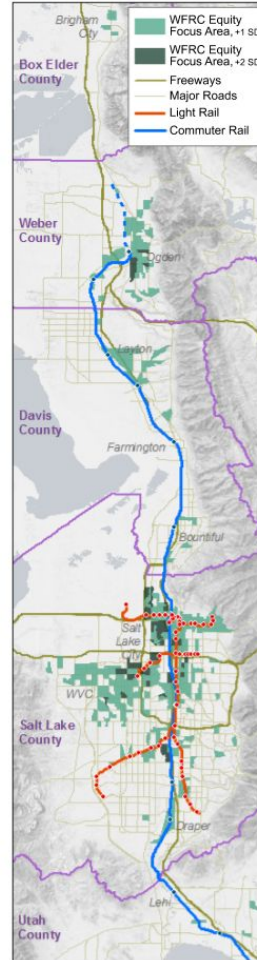
Accessibility -- ease of reaching key destinations

ATO with an Equity Lens

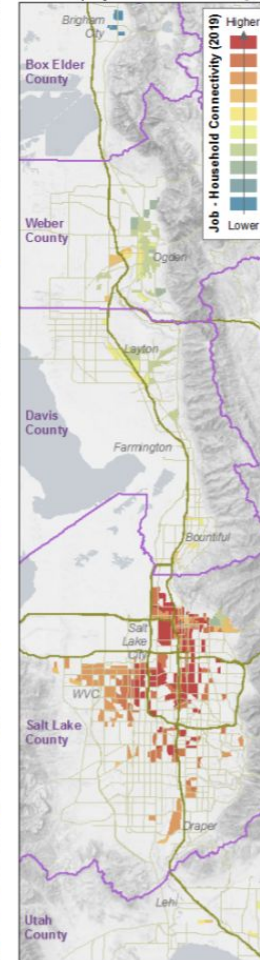
A WFRC Transportation Analysis of Equity Focus Areas:

- Households with Lower Income
- Racial / Ethnic Minority
- Zero Car Households

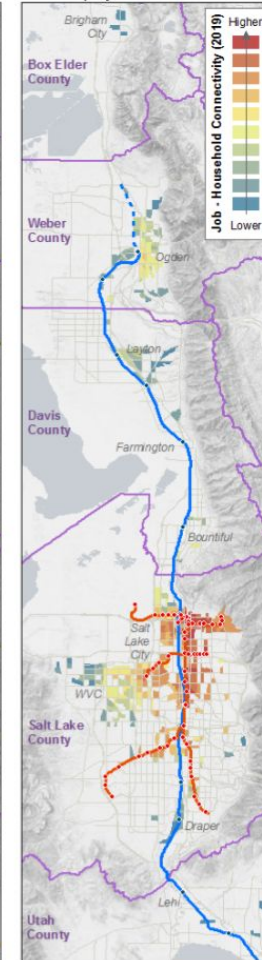
WFRC Equity Focus Areas



Workplace ATO by Auto for WFRC Equity Focus Areas



Workplace ATO by Transit for WFRC Equity Focus Areas



Highlighting Transportation Stories and Experiences



HOW DO YOU GET AROUND TOWN?

Help us make a difference in the lives of our neighbors by sharing your story!

Receive \$50 for participating

WE ARE LOOKING FOR INDIVIDUALS THAT MEET AT LEAST ONE OF THE FOLLOWING:

- 18 years or older
- Live along the Wasatch Front
- Ride transit regularly
- Walk or bike regularly
- Identify as part of a traditionally underrepresented group
 - Person of Color
 - LGBTQ+
 - Adults 65+
 - Limited English proficiency



PARTICIPATION INVOLVES

Completing a 30 minute interview by phone or online to talk about your experience walking, biking, riding transit or traveling by car. This involvement will be incorporated into WFRC's 2023 Regional Transportation Plan.

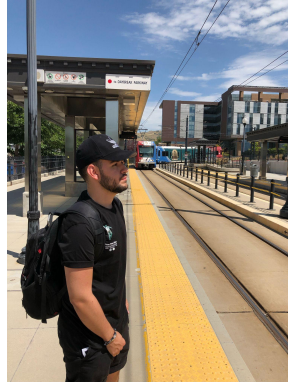
Sign up by scanning the QR Code or using the link below

<http://bit.ly/surveywasatch>

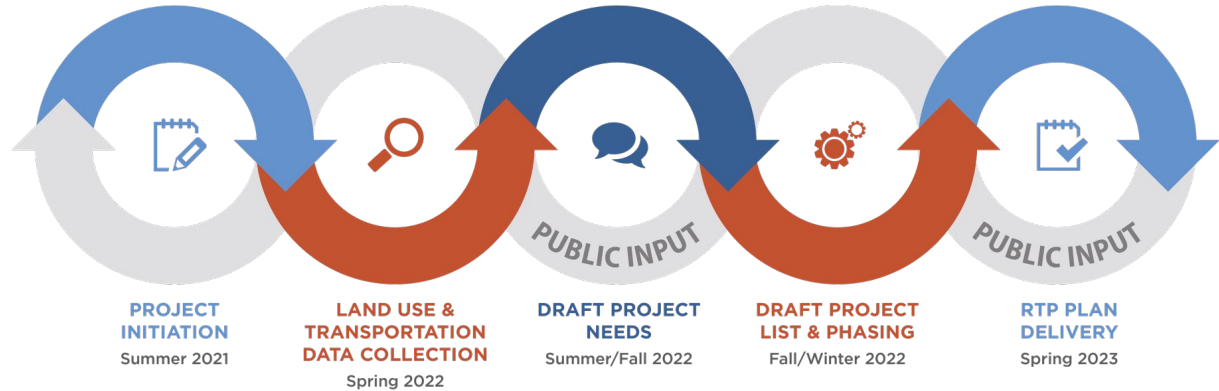
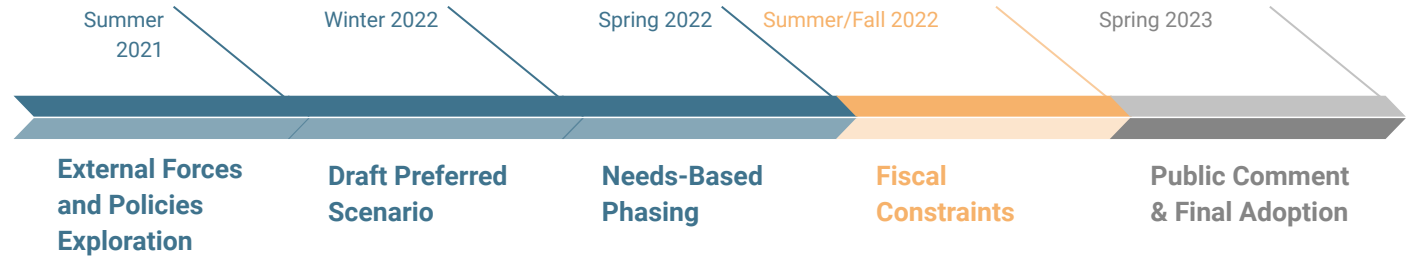


SCAN ME

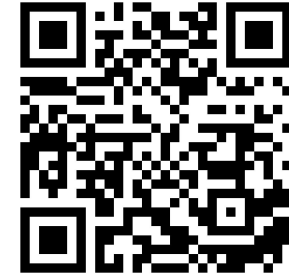
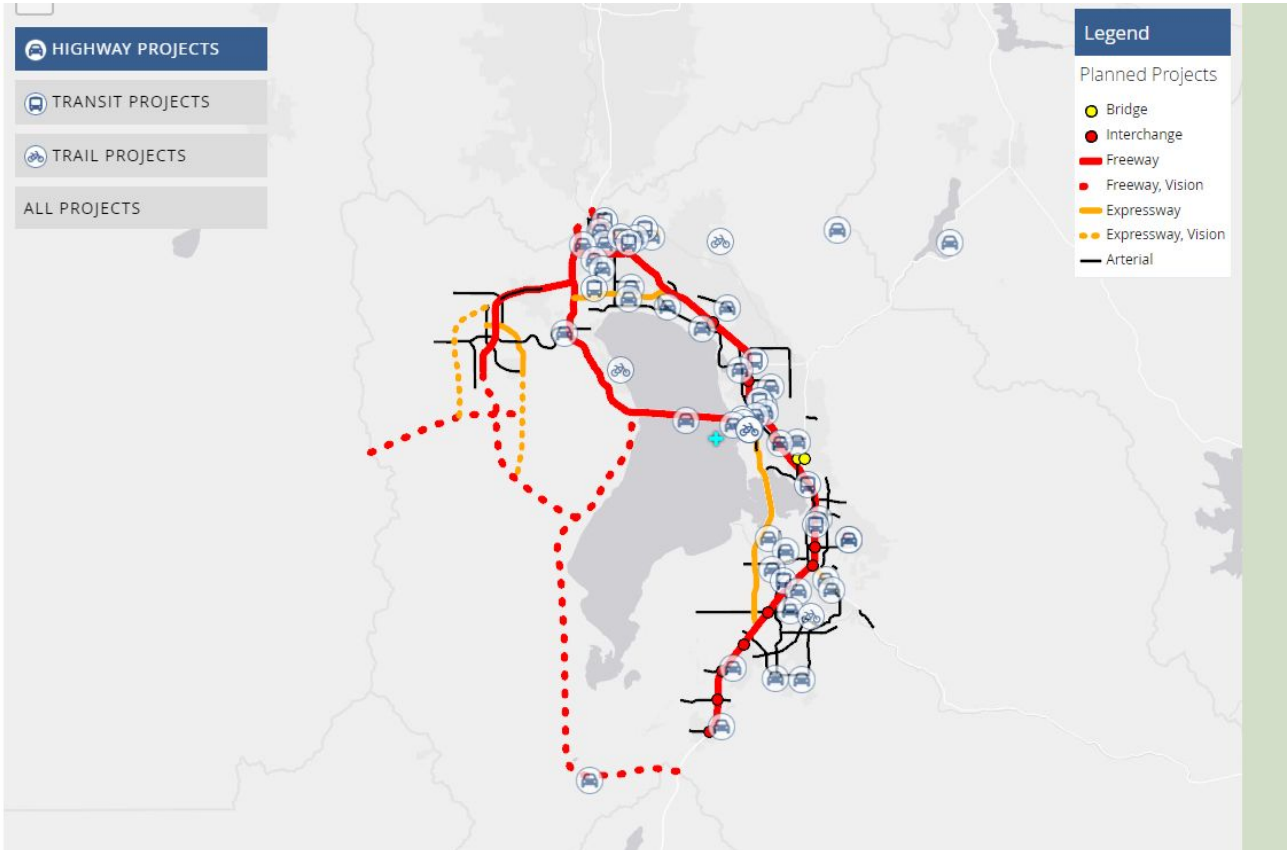
For more information:
Email: longrange@wfr.org
Phone: 801-363-4250 ext. 1108



Schedule

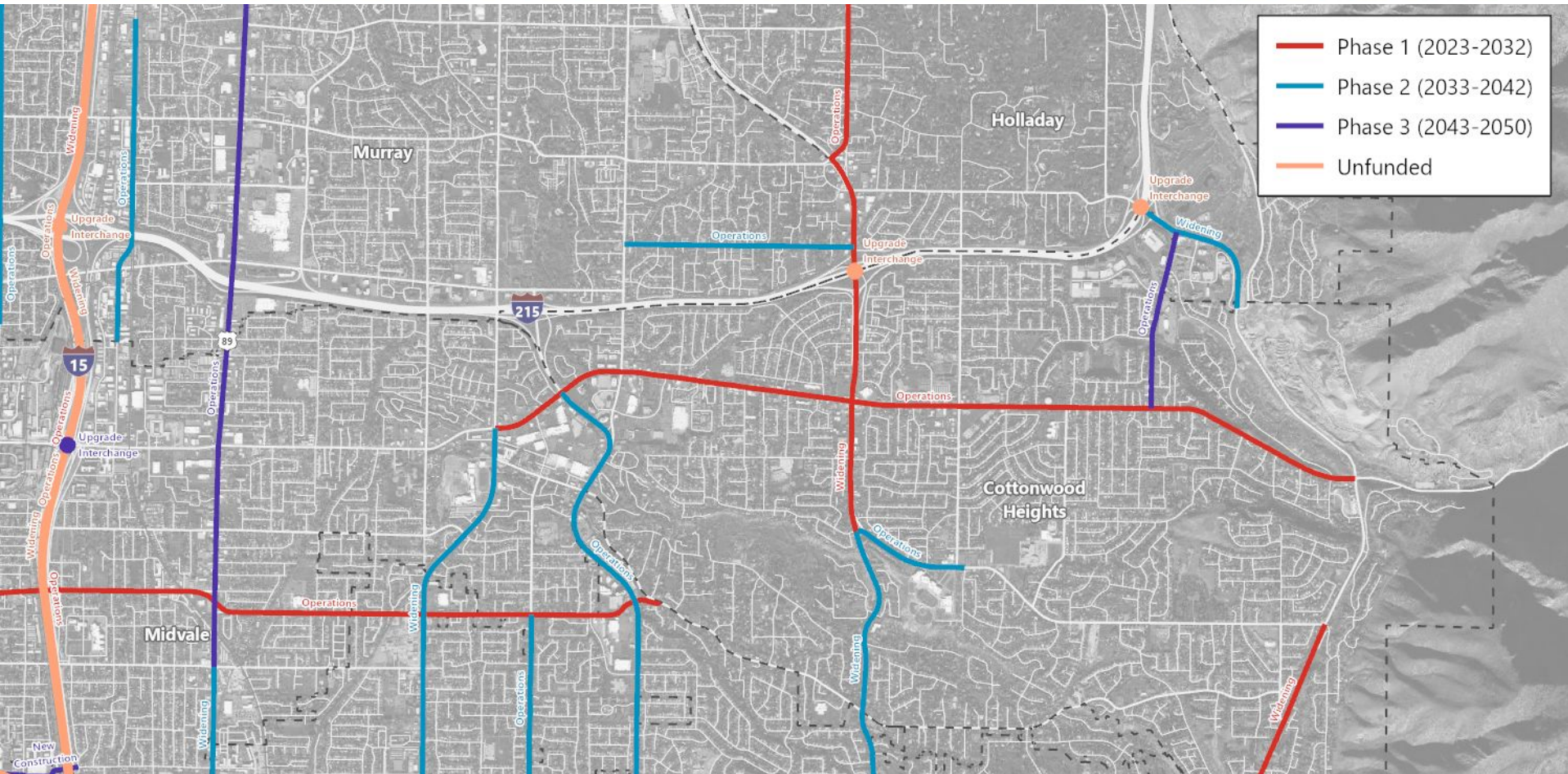


MAG Interactive Comment Map Example



<https://mountainland.org/transplan50-2023/>

WFRC Interactive Comment Map Example



Public Comment Period

WFRC - January 17 - February 16

MAG - March 1-31



Discussion: 

How else do we engage with broader communities
on Draft 2023-2050 RTPs?

Advisory Committee Resource Archive



Wasatch Choice Community Advisory Committee *Resource Archive*

Committee Materials

[Member Acceptance Letter](#)
[Committee Purpose and Concept](#)
[Advisory Committee Objectives](#)
[Advisory Committee Webpage](#)
[WFRG Equity Story Map](#)
[WFRG Equity Website](#)

What we do?

[What is a Metropolitan Planning Organization \(MPO\)?](#)
[What is urban planning?](#)
[Frequently Used Transportation Acronyms](#)
[Wasatch Front Regional Council Website](#)
[Utah Department of Transportation \(UDOT\) Website](#)
[Utah Transit Authority \(UTA\) Website](#)
[Mountainland Association of Governments \(MAG\)](#)

Tools to connect planning with your community

[Wasatch Choice Public Engagement Guidebook](#)
[Wasatch Choice Social Media Guidebook](#)

Plans

[Wasatch Choice Regional Vision](#)

Current Studies

[Zero Fare Study One-pager](#)
[First/Last Mile Connectivity Projects and Funding](#)

Current Public Comment or Engagement Opportunities

Recorded Meetings

[Nov. 1, 2022 Zero Fare Study Special Session](#)



Advisory Committee Webpage

The screenshot shows the homepage of the Wasatch Choice Community Advisory Committee. At the top is the Wasatch Front Regional Council logo and a navigation menu with links for Home, About, Committees, Vision & Plans, Programs, Maps & Data, Studies, Public Involvement, and Contact. Below the navigation is a breadcrumb trail: Home » Committees » Wasatch Choice Community Advisory Committee. The main content area features a large group photo of committee members with the text "Wasatch Choice Community Advisory Committee" overlaid. To the right of the photo is a QR code with a stylized 'b' logo in the center. Below the photo is a "Meeting Schedule" section with a calendar icon and a list of dates: September 27, 2022; November 1, 2022 (Special Session: Zero Fare Study); December 6, 2022; March 7, 2023; and June 6, 2023. A note states that all meetings are held on Tuesdays at 5:30 pm and will be held in a hybrid online/in-person fashion until further notice. On the left side of the page, there are three expandable sections: "Membership", "2022 Meetings", and "Helpful Links and Downloads". At the bottom of the page are logos for the transportation partners: UDOT (Keeping Utah Moving), UTA, MAG (Expert Resources. Enriching Lives.), and the Wasatch Front Regional Council logo.

WASATCH FRONT REGIONAL COUNCIL

Home About Committees Vision & Plans Programs Maps & Data Studies Public Involvement Contact Q

Wasatch Choice Community Advisory Committee Home » Committees » Wasatch Choice Community Advisory Committee

Wasatch Choice Community Advisory Committee

The Wasatch Choice Community Advisory Committee is built upon the goal that all communities have access to opportunities for work, education, and other essential destinations, and the recognition that land use and transportation policies have a history of perpetuating racial and economic inequities in America. The Wasatch Choice partners are committed to identifying solutions for positive change.

The purpose of the Wasatch Choice Community Advisory Committee is to enhance the engagement of communities and apply an equity lens to the Wasatch Choice Regional Vision while advising Wasatch Choice transportation partner agencies (UDOT, UTA, MAG and WFRC) on transportation and land use decisions. The Advisory Committee creates a forum/dialog for enhancing awareness and understanding of the needs and priorities of diverse communities and promoting equity in the region. Advisory Committee members can make recommendations on issues and analyses potentially relevant to the needs and circumstances of diverse populations in the region.

Specific goals and objectives of this Community Advisory Committee will be formed through input and collaboration from the future members that are most familiar with the needs of the communities in which they live, work and serve.

For additional information regarding the Community Advisory Committee, please contact [Lauren Victor](#) or [Nikki Navio](#).

- + Membership
- + 2022 Meetings
- + Helpful Links and Downloads

Meeting Schedule

- September 27, 2022
- November 1, 2022
Special Session: Zero Fare Study
- December 6, 2022
- March 7, 2023
- June 6, 2023

All meetings are held on Tuesdays at 5:30 pm and will be held in a hybrid online/in-person fashion until further notice.

UDOT Keeping Utah Moving UTA MAG Expert Resources. Enriching Lives. WASATCH FRONT REGIONAL COUNCIL



wfrc.org/committees/community-advisory

Agenda

- 1 Welcome and (Re)introductions
- 2 Shared Committee Objectives
- 3 Wasatch Choice Vision
- 4 Committee Member Share
- 5 2023-2050 Draft Regional Transportation Plans
- 6 Announcements**