



# Funding Programs

## Fiscal Year 2024



WASATCH FRONT REGIONAL COUNCIL

# WFRC Funding Programs

---

- Surface Transportation Program
- Congestion Mitigation Air Quality
- Transportation Alternatives Program
- Carbon Reduction Program
- Transportation & Land Use Connection Program
- Station Area Plan Technical Assistance
- Wasatch Front Economic Development District
- Community Development Block Grant Program
- Community Impact Board







**SURFACE TRANSPORTATION  
PROGRAM (STP)**



**CONGESTION MITIGATION/  
AIR QUALITY (CMAQ)**

## **FEDERAL FUNDING PROGRAMS**



**TRANSPORTATION  
ALTERNATIVES PROGRAM (TAP)**



**CARBON REDUCTION  
PROGRAM (CRP)**



# **SURFACE TRANSPORTATION PROGRAM (STP)**



## Eligible STP Project Types

- Street widening or new construction
- Improve or reconstruct existing streets
- Bridge replacement
- Projects that reduce traffic demand
- Intersection improvements



5600 West – 6200 South to 7000 South  
Reconstruct & Widen

**Before**



**After**







# CONGESTION MITIGATION/ AIR QUALITY (CMAQ)

# Eligible CMAQ Project Types

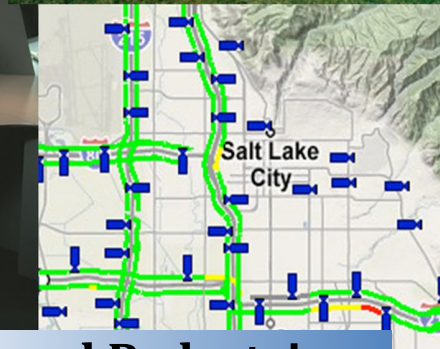
- **Diesel Engine Retrofits**
- **Idle Reduction**
- **Traffic Flow Improvements**
- **Freight/Intermodal**
- **Transportation Control Measures**
- **Transit Improvements**
- **Bike & Pedestrian Facilities**
- **Travel Demand Management**
- **Carpools & Vanpools**
- **Carsharing**
- **Extreme Cold Starts**
- **Alternative Fuels & Vehicles**





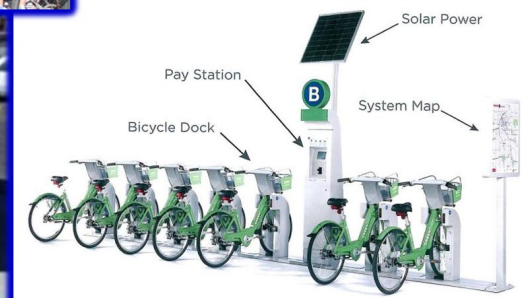
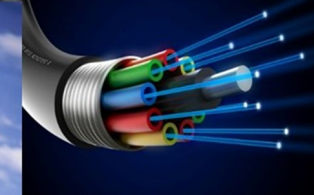
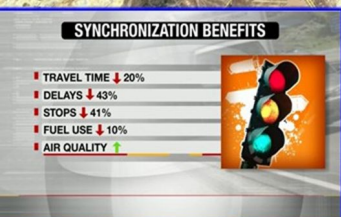
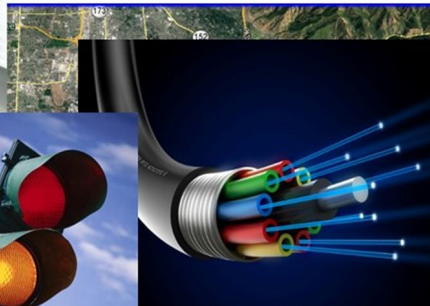
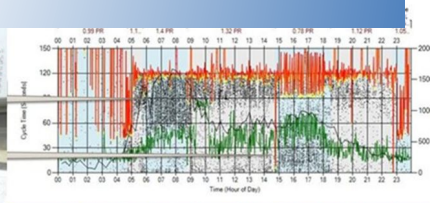
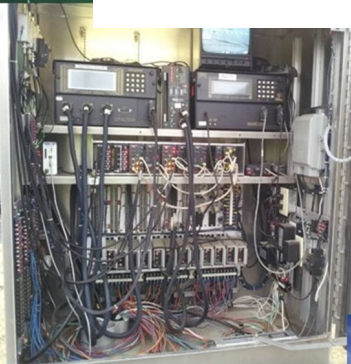
# Construct/ Purchase Public Transportation Facilities and Equipment

# Intelligent Transportation Systems (ITS)



## Urban Area - Signal Interconnect

## Commuter Bicycle and Pedestrian Facilities







# TRANSPORTATION ALTERNATIVES PROGRAM (TAP)

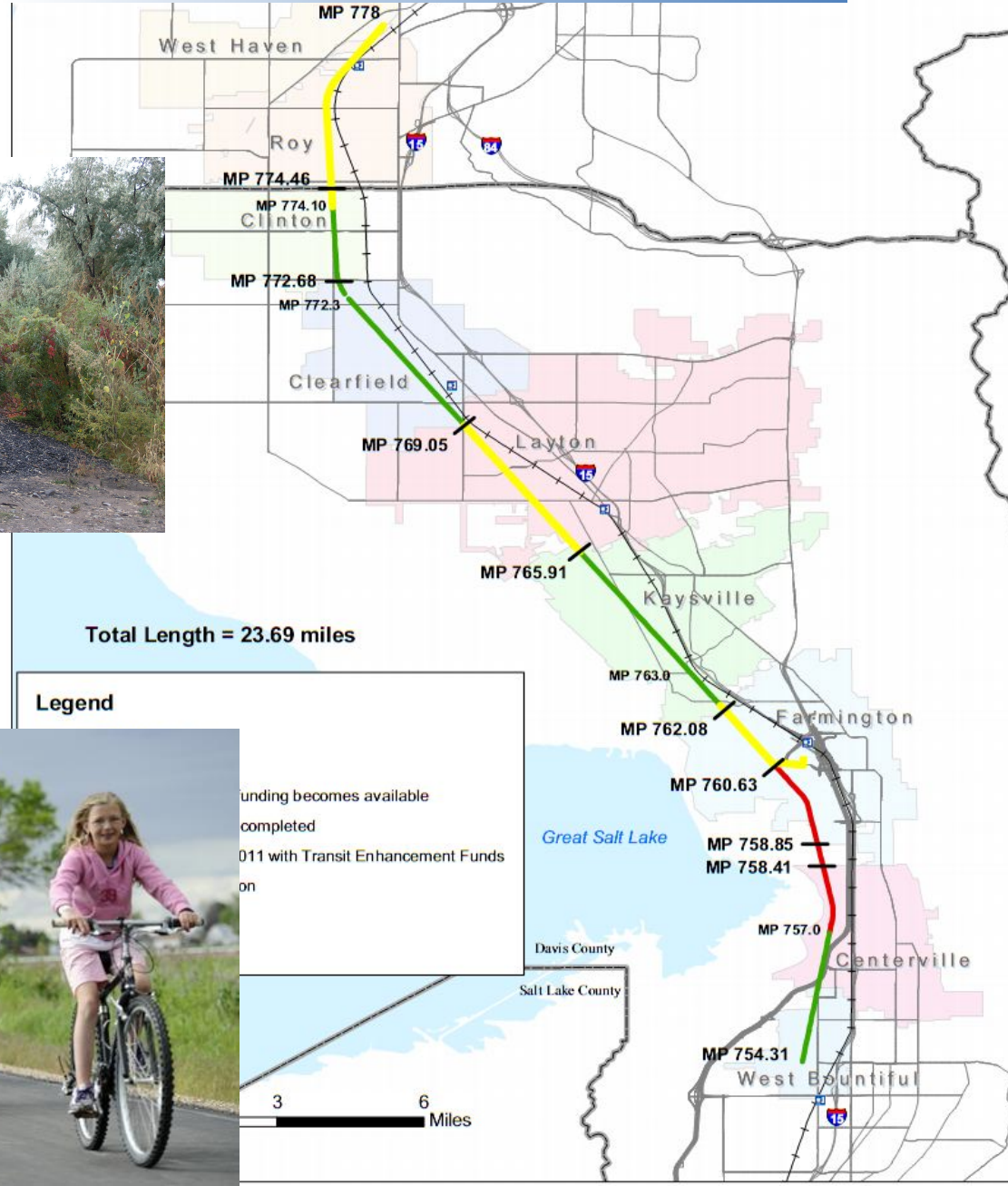


## Eligible TAP Project Types

- Construction, planning, and design
- Pedestrian, bicyclists, & other non-motorized forms of transportation
- Improvements could include:
  - Sidewalks
  - Bicycle infrastructure
  - Traffic calming techniques
  - Lighting and safety-related infrastructure for non-drivers
- Safe Routes to School projects



# D&RGW Rail/ Trail







# **CARBON REDUCTION PROGRAM (CRP)**

## Eligible CRP Project Types

### Must be Used to Reduce On-road CO2 Emissions

- Reduce traffic congestion/ alternatives to single-occupant vehicle trips
- Planning, design, construction of pedestrian, bicyclist, & other non-motorized forms of transportation improvements
- Other examples include:
  - Traffic monitoring management
    - Traffic Signal Coordination
    - Intersection Improvements
  - Support Alternative Fuel Deployment
  - Intelligent transportation systems and installations of infrastructure & equipment
  - Diesel engine retrofit









TRANSPORTATION  
AND  
LAND USE CONNECTION





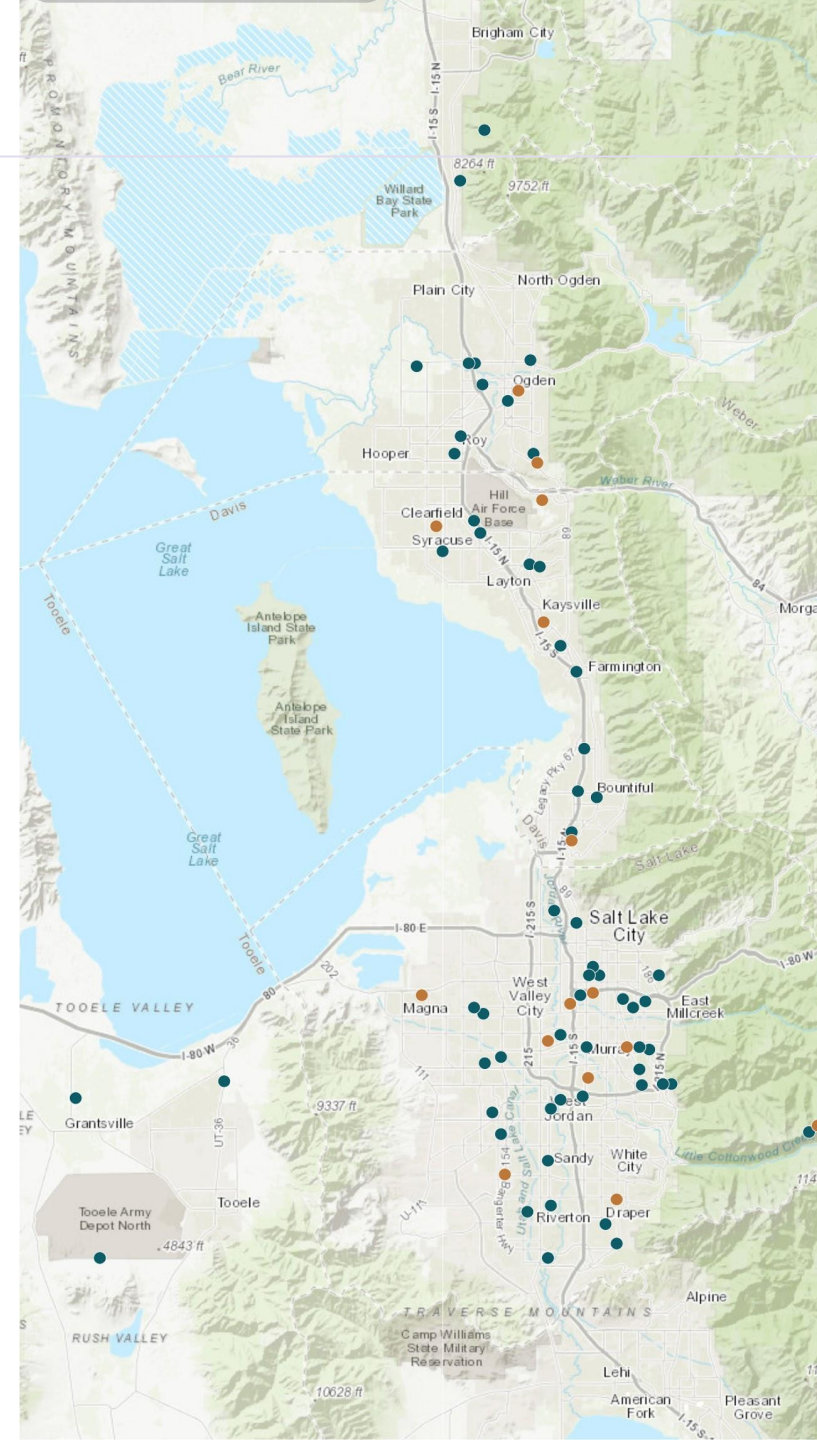
# TLC PROGRAM GOALS

Maximize the **value of investment** in public infrastructure

Enhance **access to opportunities**

Increase **travel options to optimize mobility**

Create **communities with opportunities to live, work, and play**



# TLC PROJECTS



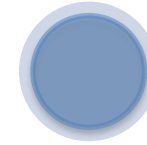
## PLANS

Visions  
Community Engagement  
Downtown Master Plans  
Active Transportation



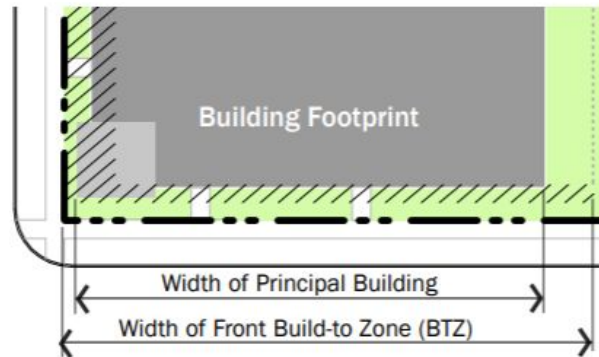
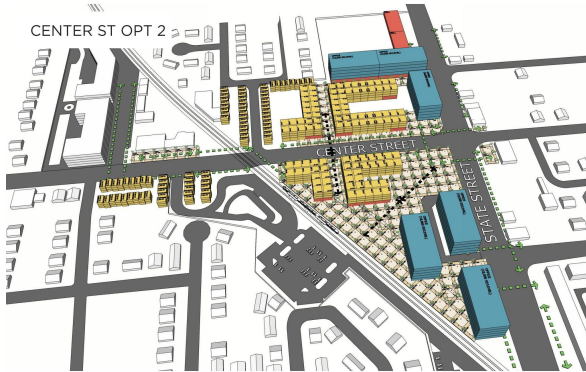
## POLICIES

Zoning Ordinances  
Design Standards  
Transportation Priorities



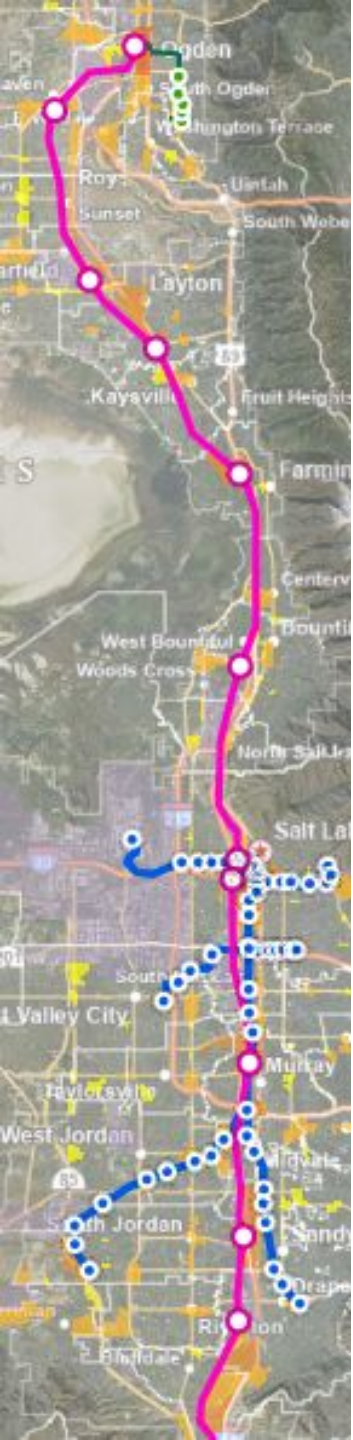
## PRODUCTS

Financing Options  
Implementation Strategies  
Redevelopment Agency  
Support



STUDIES AND ANALYSES (Parking, Market, etc.)





# STATION AREA PLANNING (SAP)

**$\frac{1}{2}$  mile around Rail stations**

**$\frac{1}{4}$  mile around BRT stations**

# **Station Area Plan Objectives**

- **Increase the availability and affordability of housing**
- **Promote sustainable environmental conditions**
- **Enhance access to opportunities**
- **Increase transportation choices and connections**



- **\$5M from GOEO over 2 years**
- Partnership between WFRC, MAG, UTA and GOEO
- Applications and awards on a rolling basis



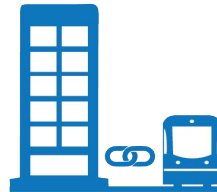
# WASATCH FRONT ECONOMIC DEVELOPMENT DISTRICT

*Mission: Support economic development plans, promote long-term economic competitiveness, and attract federal monies in order to implement local plans.*

## STRATEGY

1

LINK DEVELOPMENT WITH  
TRANSPORTATION & OTHER  
INFRASTRUCTURE



## STRATEGY

2

CREATE FISCALLY  
SUSTAINABLE PLACES



## STRATEGY

3

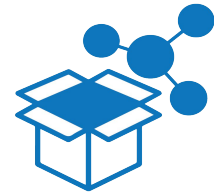
PROVIDE AMENITIES  
MAINTAINING QUALITY OF  
LIFE ELEMENTS



## STRATEGY

4

ATTRACT AND RETAIN  
BUSINESSES, & ENCOURAGE  
INNOVATION



Comprehensive Economic  
Development Strategy





# WFEDD

WASATCH FRONT  
ECONOMIC DEVELOPMENT DISTRICT



WASATCH FRONT REGIONAL COUNCIL

DAVIS | MORGAN | SALT LAKE | TOOELE | WEBER



## WASATCH FRONT ECONOMIC DEVELOPMENT DISTRICT

*Mission: Support economic development plans, promote long-term economic competitiveness, and attract federal monies in order to implement local plans.*

# U.S. Economic Development Administration Funding Programs

### PUBLIC WORKS & ECONOMIC ADJUSTMENT ASSISTANCE

**\$100,000 - \$3,000,000**

- ☐ Job Creation
- ☐ Job Retention
- ☐ Construction
- ☐ Global Competitiveness
- ☐ Leverage Private Capital
- ☐ Coal Impacted Communities
- ☐ Build Regional Capacity

### REGIONAL INNOVATION STRATEGIES

**\$0 – \$500,000**

- ☐ Innovation Centers
- ☐ Entrepreneurial Centers
- ☐ Cluster-Based Startups

### LOCAL TECHNICAL ASSISTANCE

**\$0 – \$300,000**

- ☐ Economic Development & Marketing Plans
- ☐ Feasibility Studies
- ☐ Impact Analyses





*Mission: Support economic development, promote long-term economic competitiveness, and attract federal monies in order to implement local plans.*

## Expand Employment



Planning Request  
**\$100,000**

Develop strategies to expand employment in Utah's advanced composites manufacturing industry and supply chain

## Encourage Entrepreneurship



Construction Request  
**\$2,000,000**

Grow creative industries and connect people and organization to space, technology, and opportunity

## Workforce Training



Workforce Training Request  
**\$614,000**

Provide workforce training to disadvantaged youth in the green construction industry

# Community Development Block Grant (CDBG) Small Cities Program



## **Program Purpose**

The purpose of the CDBG Program is to assist in developing viable urban communities by providing decent housing and a suitable living environment, principally for persons of low and moderate income.

## **Program Eligibility**

Morgan, Tooele, and Weber Counties

# Community Development Block Grant (CDBG) Program

---

## ELIGIBLE PROJECT TYPES

- Planning
- Building Rehabilitation
- Certain Types of Access Improvements
- Public Safety Equipment
- Property Acquisition for Public Purposes
- Promotion of Neighborhood Centers
- Create/Rehabilitate Recreation Facilities
- Demolish Buildings to Reduce Slum/Blight
- Install/Modify Public Works Infrastructure
- Construct/Reconstruct Streets, Water, Sewer Facilities
- Housing Lot Acquisition for Multiple-Family Housing Construction





# Community Development Block Grant (CDBG) Program

---

## HOUSING and COMMUNITY DEVELOPMENT

**Total Funding for FY 2021**  
**\$1,014,787**

Water Valve Replacement  
Washington Terrace City \$250,000



Community Center  
Huntsville Town \$200,000



Road Installation  
Tooele County \$250,000



Source: Quarry Magazine - not actual road

# WFRC Funding Program Deadlines

---

**We're  
Here**





# For More Information

---

Wasatch Front Regional Council

[www.wfrc.org](http://www.wfrc.org) 801-363-4250

Surface Transportation, Congestion Mitigation Air Quality,  
Transportation Alternatives, Carbon Reduction

Ben Wuthrich 801-647-3228 [bwuthrich@wfrc.org](mailto:bwuthrich@wfrc.org)

Transportation and Land Use Connection,  
Station Area Plan Technical Assistance

Megan Townsend 801-404-8925 [mtownsend@wfrc.org](mailto:mtownsend@wfrc.org)

Economic Development District

Marcia White x1104 [mwhite@wfrc.org](mailto:mwhite@wfrc.org)

Community Development Block Grant, Community Impact Board

Christy Dahlberg x5005 [christy@wfrc.org](mailto:christy@wfrc.org)





**A Kearns Metro Township/West Valley City Project**

---

## **Roadway Reconstruction Project**

5600 West to 4000 West



# 4700 South Reconstruction

## Project Limits/Scope



# 4700 South Reconstruction

## Project History

- 2012
  - Salt Lake County/WVC co-sponsored the project and applied for Federal Surface Transportation Program Funds (STP). Obtained \$7.7M of STP Funds
- 2014-2015
  - Environmental Document prepared and approved
- 2018
  - Applied for and obtained an additional \$5.2M of STP funds
- 2019
  - Applied for and obtained an additional \$2.3M of STP funds
  - Started design in December of 2019

| STP Funding Summary                      |           |                   |
|--|-----------|-------------------|
| Federal STP Funds:                       | \$        | 14,175,041        |
| Local Government Matching Funds (6.77%): | \$        | 1,029,336         |
| <b>Total Available Funding:</b>          | <b>\$</b> | <b>15,204,377</b> |



## 4700 South Reconstruction Anticipated Schedule/Risks

| 4700 South Reconstruction - 5600 West to 4000 West Schedule |     |                     |     |     |     |     |                     |                                    |   |     |     |      |     |     |     |     |     |     |     |     |     |               |     |      |     |     |     |     |     |     |     |     |     |     |     |      |     |     |     |     |     |     |     |     |     |     |     |
|---|-----|---------------------|-----|-----|-----|-----|---------------------|------------------------------------|---|-----|-----|------|-----|-----|-----|-----|-----|-----|-----|-----|-----|---------------|-----|------|-----|-----|-----|-----|-----|-----|-----|-----|-----|-----|-----|------|-----|-----|-----|-----|-----|-----|-----|-----|-----|-----|-----|
| 2020  |     |                     |     |     |     |     |                     |                                    |   |     |     | 2021 |     |     |     |     |     |     |     |     |     |               |     | 2022 |     |     |     |     |     |     |     |     |     |     |     | 2023 |     |     |     |     |     |     |     |     |     |     |     |
| Dec   | Jan | Feb                 | Mar | Apr | May | Jun | Jul                 | Aug                                | Sep                                     | Oct | Nov | Dec  | Jan | Feb | Mar | Apr | May | Jun | Jul | Aug | Sep | Oct           | Nov | Dec  | Jan | Feb | Mar | Apr | May | Jun | Jul | Aug | Sep | Oct | Nov | Dec  | Jan | Feb | Mar | Apr | May | Jun | Jul | Aug | Sep | Oct | Nov |
|   |     |                     |     |     |     |     |                     | Preliminary Design/Cost Estimating |   |     |     |      |     |     |     |     |     |     |     |     |     |               |     |      |     |     |     |     |     |     |     |     |     |     |     |      |     |     |     |     |     |     |     |     |     |     |     |
|   |     |                     |     |     |     |     | Right-of-Way Design |                                    |   |     |     |      |     |     |     |     |     |     |     |     |     |               |     |      |     |     |     |     |     |     |     |     |     |     |     |      |     |     |     |     |     |     |     |     |     |     |     |
|   |     |                     |     |     |     |     |                     |                                    | Right-of-Way Appraisals and Acquisition |     |     |      |     |     |     |     |     |     |     |     |     |               |     |      |     |     |     |     |     |     |     |     |     |     |     |      |     |     |     |     |     |     |     |     |     |     |     |
|   |     |                     |     |     |     |     |                     | Final Design                       |   |     |     |      |     |     |     |     |     |     |     |     |     |               |     |      |     |     |     |     |     |     |     |     |     |     |     |      |     |     |     |     |     |     |     |     |     |     |     |
|   |     | Railroad Permitting |     |     |     |     |                     |                                    |   |     |     |      |     |     |     |     |     |     |     |     |     |               |     |      |     |     |     |     |     |     |     |     |     |     |     |      |     |     |     |     |     |     |     |     |     |     |     |
|   |     |                     |     |     |     |     |                     |                                    |   |     |     |      |     |     |     |     |     |     |     |     |     | Advertising   |     |      |     |     |     |     |     |     |     |     |     |     |     |      |     |     |     |     |     |     |     |     |     |     |     |
|   |     |                     |     |     |     |     |                     |                                    |   |     |     |      |     |     |     |     |     |     |     |     |     | Award Project |     |      |     |     |     |     |     |     |     |     |     |     |     |      |     |     |     |     |     |     |     |     |     |     |     |
|   |     |                     |     |     |     |     |                     |                                    |   |     |     |      |     |     |     |     |     |     |     |     |     | Construction  |     |      |     |     |     |     |     |     |     |     |     |     |     |      |     |     |     |     |     |     |     |     |     |     |     |

- Design Consultant: H.W. Lochner, Inc.
- Project/Schedule Risks
  - Funding
  - Right-of-Way Acquisition – Approx. 70 Parcels
  - Railroad Crossing Permit/Agreement
  - Overhead Utility Burial (WVC Betterment)

## WVC Betterment – Overhead Utility Burial



## 4700 South Power Burial Limits

## WVC Betterment

- Bury Overhead Utilities
  - Rocky Mountain Power
  - Comcast
  - Utopia
  - Zayo



# 4700 South Reconstruction

## Anticipated Schedule/Risks

| 4700 South Reconstruction - 5600 West to 4000 West Schedule |     |                     |     |     |     |     |                     |                                    |   |     |     |     |      |     |     |     |     |     |     |     |     |             |     |               |     |      |     |     |     |     |     |     |     |     |     |     |     |     |      |     |     |     |     |     |     |     |     |
|---|-----|---------------------|-----|-----|-----|-----|---------------------|------------------------------------|---|-----|-----|-----|------|-----|-----|-----|-----|-----|-----|-----|-----|-------------|-----|---------------|-----|------|-----|-----|-----|-----|-----|-----|-----|-----|-----|-----|-----|-----|------|-----|-----|-----|-----|-----|-----|-----|-----|
| 2020  |     |                     |     |     |     |     |                     |                                    |   |     |     |     | 2021 |     |     |     |     |     |     |     |     |             |     |               |     | 2022 |     |     |     |     |     |     |     |     |     |     |     |     | 2023 |     |     |     |     |     |     |     |     |
| Dec   | Jan | Feb                 | Mar | Apr | May | Jun | Jul                 | Aug                                | Sep                                     | Oct | Nov | Dec | Jan  | Feb | Mar | Apr | May | Jun | Jul | Aug | Sep | Oct         | Nov | Dec           | Jan | Feb  | Mar | Apr | May | Jun | Jul | Aug | Sep | Oct | Nov | Dec | Jan | Feb | Mar  | Apr | May | Jun | Jul | Aug | Sep | Oct | Nov |
|   |     |                     |     |     |     |     |                     | Preliminary Design/Cost Estimating |   |     |     |     |      |     |     |     |     |     |     |     |     |             |     |               |     |      |     |     |     |     |     |     |     |     |     |     |     |     |      |     |     |     |     |     |     |     |     |
|   |     |                     |     |     |     |     | Right-of-Way Design |                                    |   |     |     |     |      |     |     |     |     |     |     |     |     |             |     |               |     |      |     |     |     |     |     |     |     |     |     |     |     |     |      |     |     |     |     |     |     |     |     |
|   |     |                     |     |     |     |     |                     |                                    | Right-of-Way Appraisals and Acquisition |     |     |     |      |     |     |     |     |     |     |     |     |             |     |               |     |      |     |     |     |     |     |     |     |     |     |     |     |     |      |     |     |     |     |     |     |     |     |
|   |     |                     |     |     |     |     |                     | Final Design                       |   |     |     |     |      |     |     |     |     |     |     |     |     |             |     |               |     |      |     |     |     |     |     |     |     |     |     |     |     |     |      |     |     |     |     |     |     |     |     |
|   |     | Railroad Permitting |     |     |     |     |                     |                                    |   |     |     |     |      |     |     |     |     |     |     |     |     |             |     |               |     |      |     |     |     |     |     |     |     |     |     |     |     |     |      |     |     |     |     |     |     |     |     |
|   |     |                     |     |     |     |     |                     |                                    |   |     |     |     |      |     |     |     |     |     |     |     |     | Advertising |     |               |     |      |     |     |     |     |     |     |     |     |     |     |     |     |      |     |     |     |     |     |     |     |     |
|   |     |                     |     |     |     |     |                     |                                    |   |     |     |     |      |     |     |     |     |     |     |     |     |             |     | Award Project |     |      |     |     |     |     |     |     |     |     |     |     |     |     |      |     |     |     |     |     |     |     |     |
|   |     |                     |     |     |     |     |                     |                                    |   |     |     |     |      |     |     |     |     |     |     |     |     |             |     | Construction  |     |      |     |     |     |     |     |     |     |     |     |     |     |     |      |     |     |     |     |     |     |     |     |

- Design Consultant: H.W. Lochner, Inc.
- Project/Schedule Risks
  - Funding
  - Right-of-Way Acquisition – Approx. 70 Parcels
  - Railroad Crossing Permit/Agreement
  - ~~Overhead Utility Burial (WVC Betterment)~~



# 4700 South Reconstruction

## Phase 1 - Box Culvert Project



# Box Culvert Project

- Box culvert construction window: October 15<sup>th</sup> to April 1<sup>st</sup>
- Right-of-Way delays resulted in the need to separate the culvert from the roadway project to meet schedule.
- Advertised/constructed as a County Project

| Box Culvert Project Schedule |             |               |              |      |     |     |     |
|------------------------------|-------------|---------------|--------------|------|-----|-----|-----|
| 2021                         |             |               |              | 2022 |     |     |     |
| Sep                          | Oct         | Nov           | Dec          | Jan  | Feb | Mar | Apr |
|                              | Advertising |               |              |      |     |     |     |
|                              |             | Award Project |              |      |     |     |     |
|                              |             |               | Construction |      |     |     |     |

# 4700 South Reconstruction

## Phase 1 - Box Culvert Project





## 4700 South Reconstruction Anticipated Schedule/Risks

| 4700 South Reconstruction - 5600 West to 4000 West Schedule |     |     |     |     |     |     |                     |                                    |   |     |     |      |     |     |     |     |     |     |     |     |     |                     |     |               |     |     |     |     |     |     |     |     |     |     |     |      |     |     |     |     |     |     |     |     |     |     |     |
|---|-----|-----|-----|-----|-----|-----|---------------------|------------------------------------|---|-----|-----|------|-----|-----|-----|-----|-----|-----|-----|-----|-----|---------------------|-----|---------------|-----|-----|-----|-----|-----|-----|-----|-----|-----|-----|-----|------|-----|-----|-----|-----|-----|-----|-----|-----|-----|-----|-----|
| 2020  |     |     |     |     |     |     |                     |                                    |   |     |     | 2021 |     |     |     |     |     |     |     |     |     |                     |     | 2022          |     |     |     |     |     |     |     |     |     |     |     | 2023 |     |     |     |     |     |     |     |     |     |     |     |
| Dec   | Jan | Feb | Mar | Apr | May | Jun | Jul                 | Aug                                | Sep                                     | Oct | Nov | Dec  | Jan | Feb | Mar | Apr | May | Jun | Jul | Aug | Sep | Oct                 | Nov | Dec           | Jan | Feb | Mar | Apr | May | Jun | Jul | Aug | Sep | Oct | Nov | Dec  | Jan | Feb | Mar | Apr | May | Jun | Jul | Aug | Sep | Oct | Nov |
|   |     |     |     |     |     |     |                     | Preliminary Design/Cost Estimating |   |     |     |      |     |     |     |     |     |     |     |     |     |                     |     |               |     |     |     |     |     |     |     |     |     |     |     |      |     |     |     |     |     |     |     |     |     |     |     |
|   |     |     |     |     |     |     | Right-of-Way Design |                                    |   |     |     |      |     |     |     |     |     |     |     |     |     |                     |     |               |     |     |     |     |     |     |     |     |     |     |     |      |     |     |     |     |     |     |     |     |     |     |     |
|   |     |     |     |     |     |     |                     |                                    | Right-of-Way Appraisals and Acquisition |     |     |      |     |     |     |     |     |     |     |     |     |                     |     |               |     |     |     |     |     |     |     |     |     |     |     |      |     |     |     |     |     |     |     |     |     |     |     |
|   |     |     |     |     |     |     |                     | Final Design                       |   |     |     |      |     |     |     |     |     |     |     |     |     |                     |     |               |     |     |     |     |     |     |     |     |     |     |     |      |     |     |     |     |     |     |     |     |     |     |     |
|   |     |     |     |     |     |     |                     |                                    |   |     |     |      |     |     |     |     |     |     |     |     |     | Railroad Permitting |     |               |     |     |     |     |     |     |     |     |     |     |     |      |     |     |     |     |     |     |     |     |     |     |     |
|   |     |     |     |     |     |     |                     |                                    |   |     |     |      |     |     |     |     |     |     |     |     |     | Advertising         |     |               |     |     |     |     |     |     |     |     |     |     |     |      |     |     |     |     |     |     |     |     |     |     |     |
|   |     |     |     |     |     |     |                     |                                    |   |     |     |      |     |     |     |     |     |     |     |     |     |                     |     | Award Project |     |     |     |     |     |     |     |     |     |     |     |      |     |     |     |     |     |     |     |     |     |     |     |
|   |     |     |     |     |     |     |                     |                                    |   |     |     |      |     |     |     |     |     |     |     |     |     |                     |     | Construction  |     |     |     |     |     |     |     |     |     |     |     |      |     |     |     |     |     |     |     |     |     |     |     |

- Design Consultant: H.W. Lochner, Inc.
- Project/Schedule Risks
  - Funding
  - ~~Right of Way Acquisition – Approx. 70 Parcels~~
  - Railroad Crossing Permit/Agreement
  - ~~Overhead Utility Burial (WVC Betterment)~~



# 4700 South Reconstruction

## Phase 3 – 5450 West to 5600 West



## Roadway Project - 5450 West to 5600 West

- Decision made to separate RR from roadway project due to delay in UPRR Agreement.
- Planned to advertise & construct as City/County Project
- Goal to maintain overall project schedule (November 2023 completion)

| 4700 South Roadway Project Schedule - 5600 West to 5400 West |     |     |     |     |     |     |     |     |     |     |               |     |     |     |     |     |     |     |     |     |     |
|--|-----|-----|-----|-----|-----|-----|-----|-----|-----|-----|---------------|-----|-----|-----|-----|-----|-----|-----|-----|-----|-----|
| 2022   |     |     |     |     |     |     |     |     |     |     | 2023          |     |     |     |     |     |     |     |     |     |     |
| Jan  | Feb | Mar | Apr | May | Jun | Jul | Aug | Sep | Oct | Nov | Jan           | Feb | Mar | Apr | May | Jun | Jul | Aug | Sep | Oct | Nov |
| Design & ROW Acquisition                                     |     |     |     |     |     |     |     |     |     |     |               |     |     |     |     |     |     |     |     |     |     |
| UPRR Agreement   |     |     |     |     |     |     |     |     |     |     |               |     |     |     |     |     |     |     |     |     |     |
|  |     |     |     |     |     |     |     |     |     |     | Advertising   |     |     |     |     |     |     |     |     |     |     |
|  |     |     |     |     |     |     |     |     |     |     | Award Project |     |     |     |     |     |     |     |     |     |     |
|  |     |     |     |     |     |     |     |     |     |     | Construction  |     |     |     |     |     |     |     |     |     |     |

# 4700 South Reconstruction

## Phase 2 – 4000 West to 5450 West



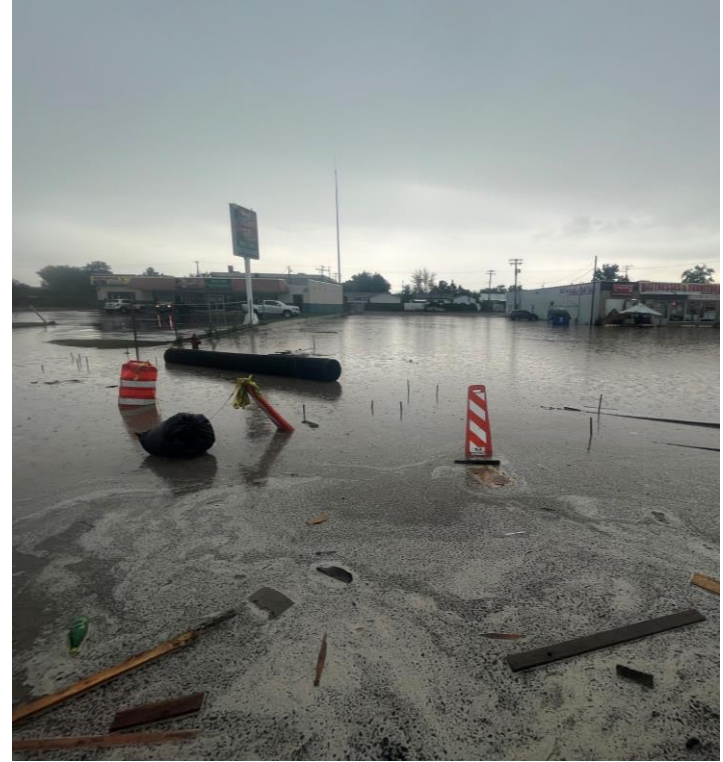
## Roadway Project - 4000 West to 5450 West

- Reconstruct pavement eliminating steep cross slopes
- Add eastbound travel lane from 4800 West to 4000 West
- Bike lanes from 5600 West to 4000 West
- Drainage improvements
- New curb, gutter and sidewalks to meet ADA requirements
- West Valley City Betterments
  - Privacy wall, street trees and irrigation

| 4700 South Roadway Project Schedule - 5450 West to 4000 West |     |                          |     |     |     |     |     |     |     |     |      |     |     |     |     |     |     |     |     |     |     |
|--|-----|--------------------------|-----|-----|-----|-----|-----|-----|-----|-----|------|-----|-----|-----|-----|-----|-----|-----|-----|-----|-----|
| 2022   |     |                          |     |     |     |     |     |     |     |     | 2023 |     |     |     |     |     |     |     |     |     |     |
| Jan  | Feb | Mar                      | Apr | May | Jun | Jul | Aug | Sep | Oct | Nov | Jan  | Feb | Mar | Apr | May | Jun | Jul | Aug | Sep | Oct | Nov |
|  |     | Right-of-Way Acquisition |     |     |     |     |     |     |     |     |      |     |     |     |     |     |     |     |     |     |     |
|  |     |                          |     |     |     |     |     |     |     |     |      |     |     |     |     |     |     |     |     |     |     |
|  |     | Advertising              |     |     |     |     |     |     |     |     |      |     |     |     |     |     |     |     |     |     |     |
|  |     |                          |     |     |     |     |     |     |     |     |      |     |     |     |     |     |     |     |     |     |     |
|  |     | Award Project            |     |     |     |     |     |     |     |     |      |     |     |     |     |     |     |     |     |     |     |
|  |     |                          |     |     |     |     |     |     |     |     |      |     |     |     |     |     |     |     |     |     |     |
|  |     | Construction             |     |     |     |     |     |     |     |     |      |     |     |     |     |     |     |     |     |     |     |
|  |     |                          |     |     |     |     |     |     |     |     |      |     |     |     |     |     |     |     |     |     |     |



# 4700 South Reconstruction





# 4700 South Reconstruction



# 4700 South Reconstruction





# 4700 South Reconstruction

## Phase 3 – 5450 West to 5600 West



### Roadway Project - 5450 West to 5600 West

- April 2023- Public Highway At-Grade Crossing Agreement executed
- May 2023 - Project was allocated \$7M through the Consolidated Appropriations Act.
  - Burgess Owens: \$4M
  - Chris Stewart: \$3M
- Phase 3 will be constructed in Spring/Summer of 2024 as a Federal LG project administered by UDOT.

| 4700 South Roadway Project Schedule - 5600 West to 5400 West |     |     |     |     |     |     |     |     |     |     |      |     |               |     |              |     |     |     |     |     |     |  |
|--|-----|-----|-----|-----|-----|-----|-----|-----|-----|-----|------|-----|---------------|-----|--------------|-----|-----|-----|-----|-----|-----|--|
| 2022   |     |     |     |     |     |     |     |     |     |     | 2023 |     |               |     |              |     |     |     |     |     |     |  |
| Jan  | Feb | Mar | Apr | May | Jun | Jul | Aug | Sep | Oct | Nov | Jan  | Feb | Mar           | Apr | May          | Jun | Jul | Aug | Sep | Oct | Nov |  |
| Design & ROW Acquisition                                     |     |     |     |     |     |     |     |     |     |     |      |     |               |     |              |     |     |     |     |     |     |  |
| UPRR Agreement   |     |     |     |     |     |     |     |     |     |     |      |     |               |     |              |     |     |     |     |     |     |  |
|  |     |     |     |     |     |     |     |     |     |     |      |     | Advertising   |     |              |     |     |     |     |     |     |  |
|  |     |     |     |     |     |     |     |     |     |     |      |     | Award Project |     | Construction |     |     |     |     |     |     |  |
|  |     |     |     |     |     |     |     |     |     |     |      |     |               |     |              |     |     |     |     |     |     |  |

Phase 3 construction pushed to 2024



# 4700 South Reconstruction

## Project Costs

| STP Funding Summary                      |                      | MSD Share<br>(70.8%) | WVC Share<br>(29.2%) |                      |                      |
|--|----------------------|----------------------|----------------------|----------------------|----------------------|
| Federal STP Funds:                       | \$ 14,175,041        | \$ 10,035,929        | \$ 4,139,112         |                      |                      |
| Local Government Matching Funds (6.77%): | \$ 1,029,336         | \$ 728,770           | \$ 300,566           |                      |                      |
| <b>Total Available Funding:</b>          | <b>\$ 15,204,377</b> |                      |                      |                      |                      |
|  |                      |                      |                      |                      |                      |
| Project Costs                            |                      | Actual Cost          | Estimate             | MSD Share<br>(70.8%) | WVC Share<br>(29.2%) |
| Phase I                                  | Box Culvert          | \$ 969,744           |                      | \$ 686,579           | \$ 283,165           |
| Phase II (excluding betterments)         | Roadway              |                      | \$ 25,098,268        | \$ 17,769,574        | \$ 7,328,694         |
| Phase II - WVC Betterments               | Roadway              | \$ 665,602           |                      | \$ -                 | \$ 665,602           |
| Phase III                                | Railroad             |                      | \$ 3,659,475         | \$ 2,590,909         | \$ 1,068,567         |
| <b>Total Projected Cost:</b>             |                      | <b>\$</b>            | <b>30,393,089</b>    | <b>\$ 21,047,061</b> | <b>\$ 9,346,028</b>  |

## **4700 South Reconstruction**

**Questions?**

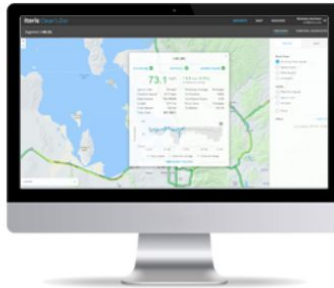
# Iteris Clearguide

<https://ut.iteris-clearguide.com/>

August 3, 2023



# 📍 Real-time contextual mobility intelligence



ClearGuide's maps, reports, and charts show you precisely where and when congestion is occurring. They also provide contextual information on the roadway network, incidents, and weather so that you can quickly and efficiently determine what actions to take.

## About ClearGuide

Iteris ClearGuide helps transportation operations and planning staff make decisions that improve the mobility, reliability, and safety of the transportation system. ClearGuide ingests, analyzes, and visualizes large amounts of complex transportation data so that you can easily see what's happening across your transportation network, from the regional level down to specific roadways.


## Quick Links

- > [Real-Time Map](#)
- > [My Routes](#)
- > [Search Routes](#)
- > [Create a Route](#)

## Getting Started

- [Create a route](#) to access performance measures and visualizations along roadway segments that you define

# Real-time Map



MAP


- Real-time Map
- Trend Map

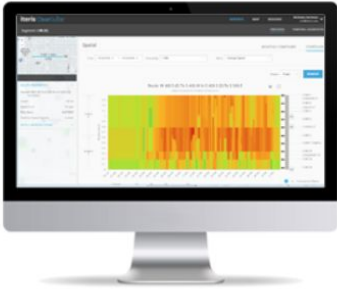
ROUTES

EXTRAS

ABOUT

UT

 Real-time contextual mobility intelligence



### About ClearGuide

Iteris ClearGuide helps transportation operations and planning staff make decisions that improve the mobility, reliability, and safety of the transportation system. ClearGuide ingests, analyzes, and visualizes large amounts of complex transportation data so that you can easily see what's happening across your transportation network, from the regional level down to specific roadways.

ClearGuide's maps, reports, and charts show you precisely where and when congestion is occurring. They also provide contextual information on the roadway network, incidents, and weather so that you can quickly and efficiently determine what actions to take.

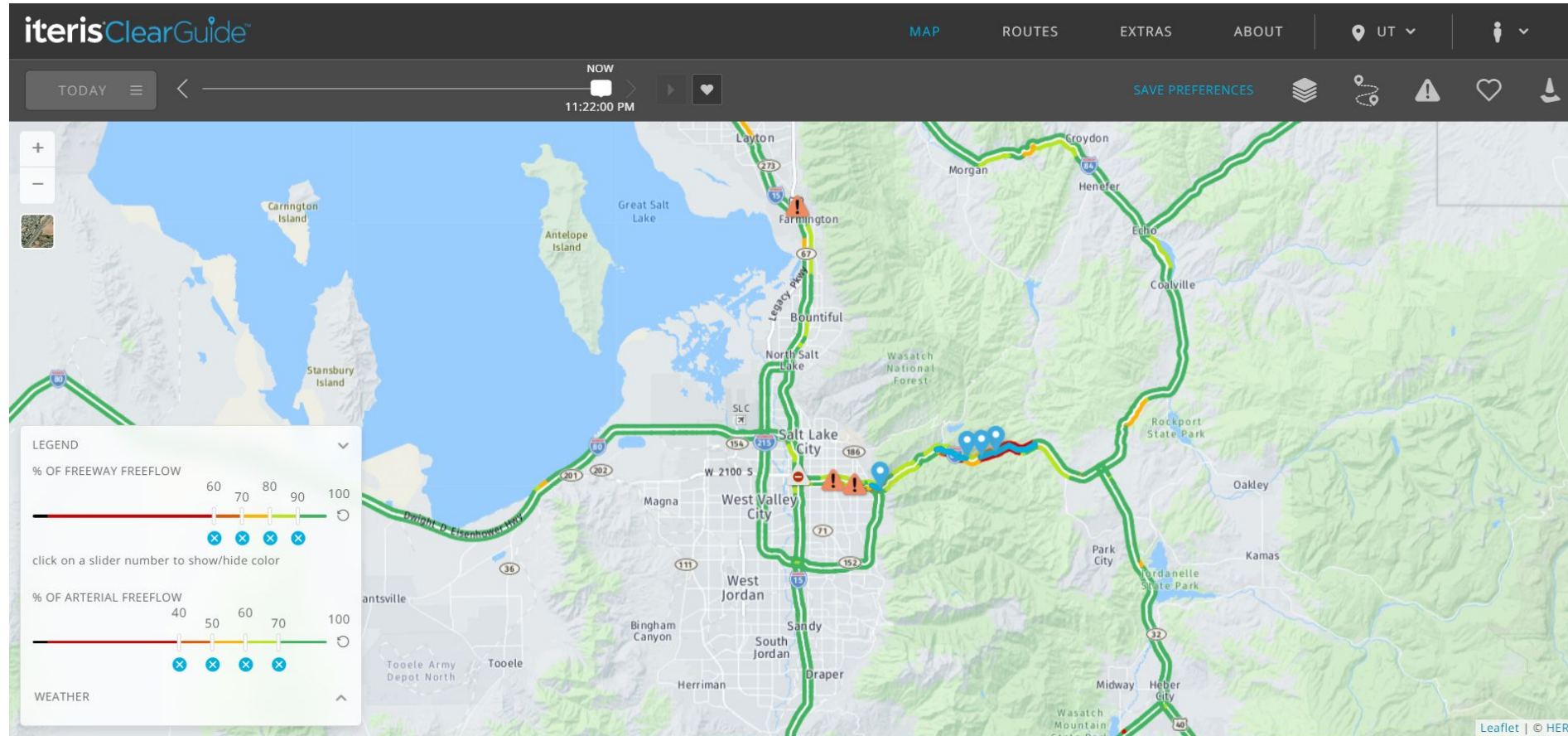
### Quick Links

- > [Real-Time Map](#)
- > [My Routes](#)
- > [Search Routes](#)
- > [Create a Route](#)

### Getting Started

- [Create a route](#) to access performance measures and visualizations along roadway

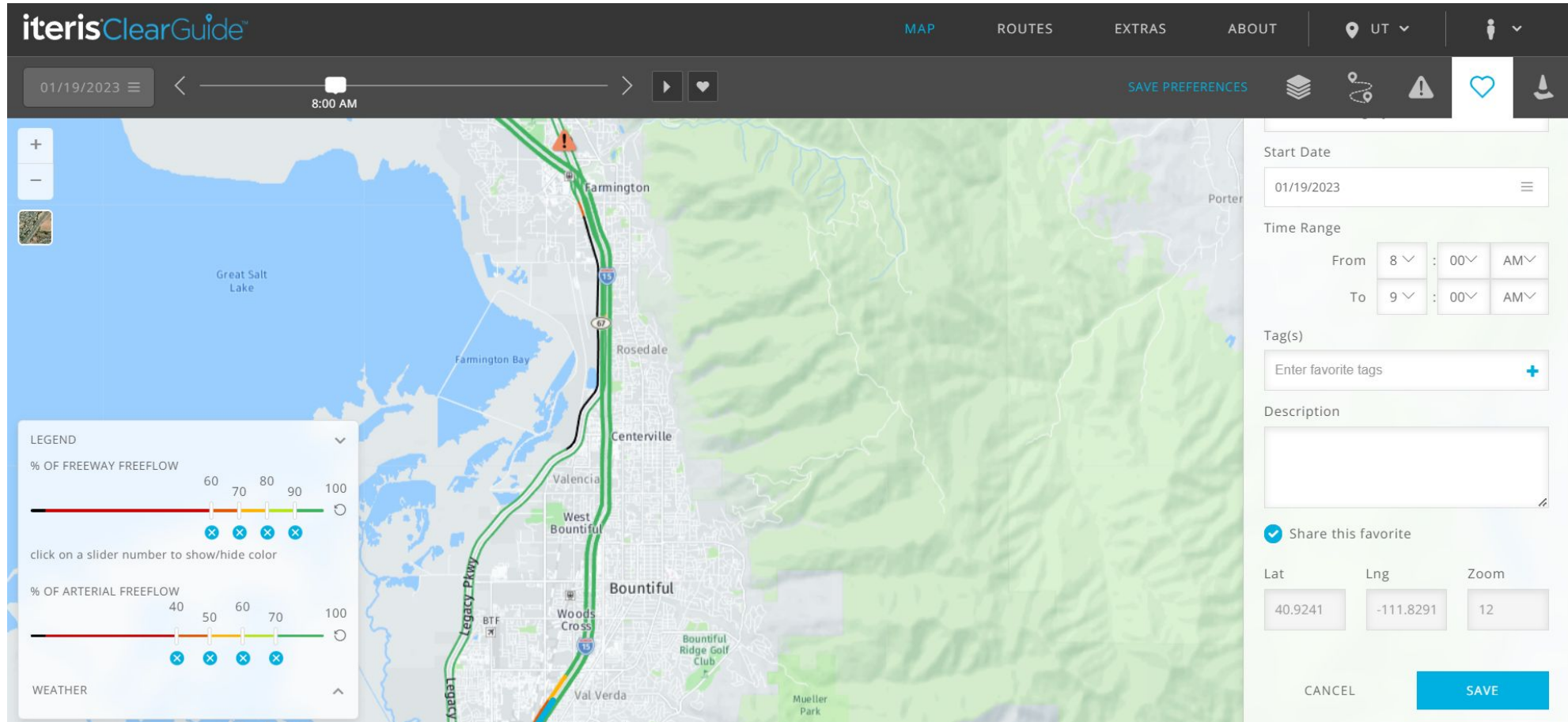
# Real-time Map



- Historic speed map
  - Incident, construction etc layers
- Ability to record videos

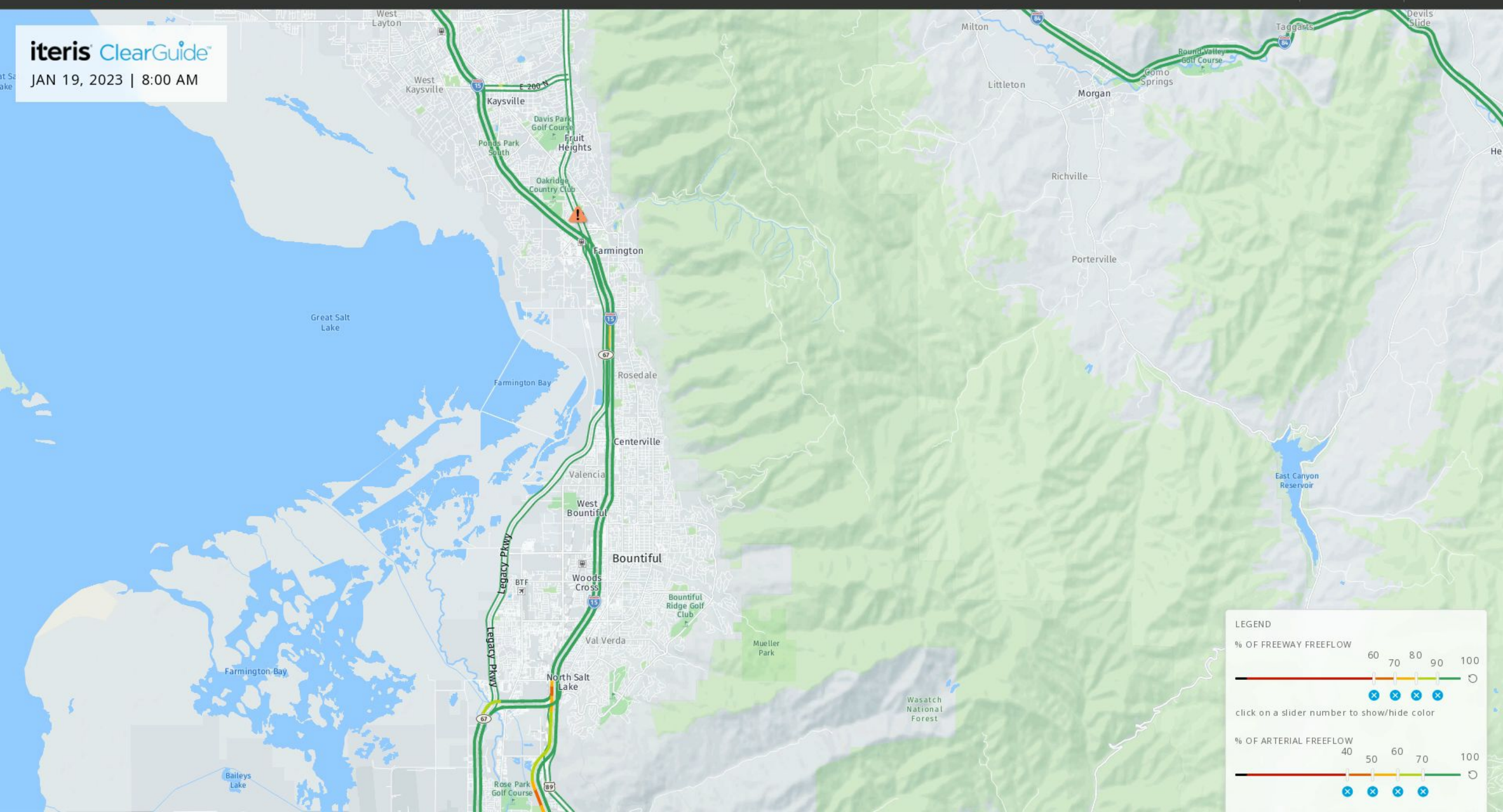


# Real-time Map



iteris ClearGuide™

JAN 19, 2023 | 8:00 AM



LEGEND

% OF FREEWAY FREEFLOW

60708090100

×

×

×

×

click on a slider number to show/hide color

% OF ARTERIAL FREEFLOW

40506070100

×

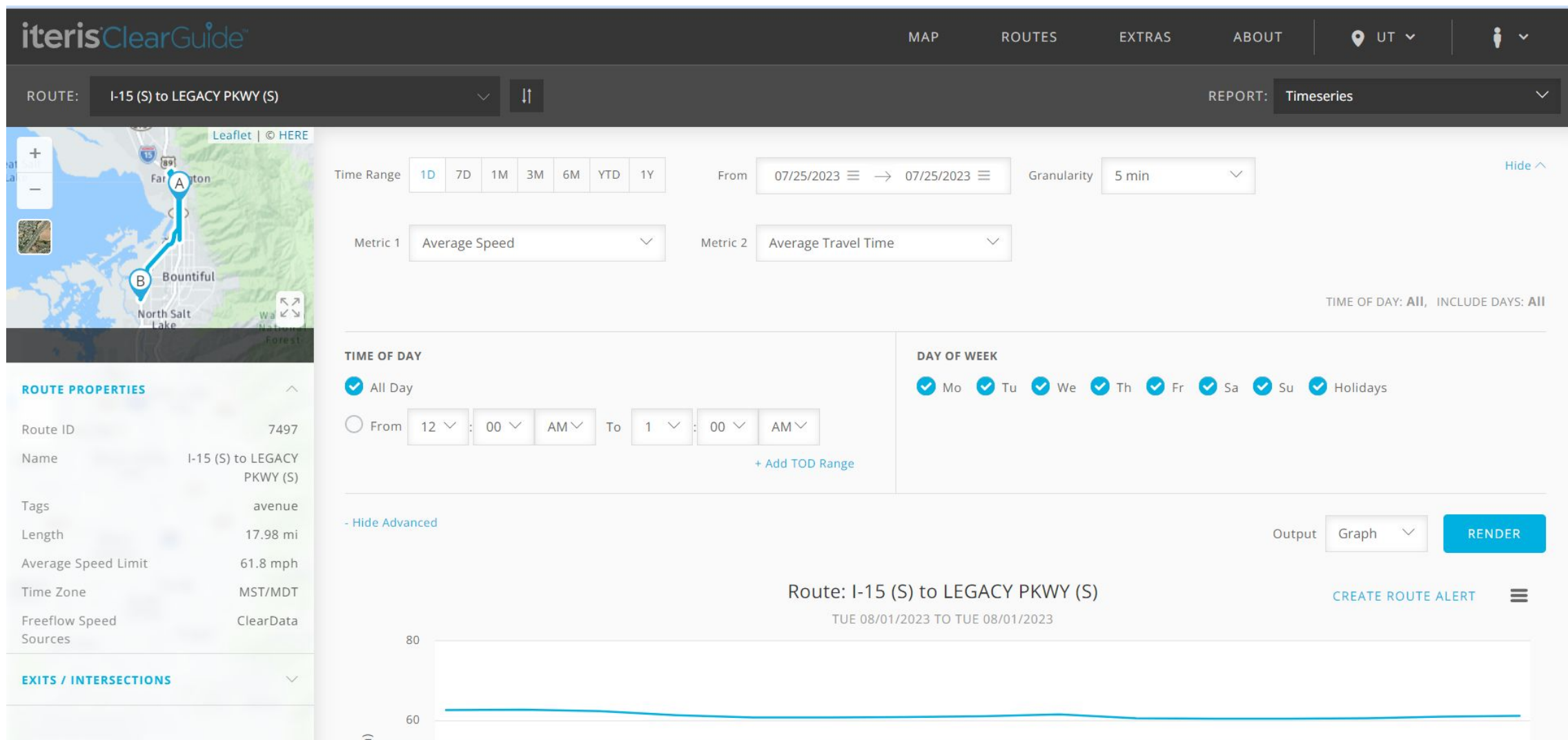
×

×

×

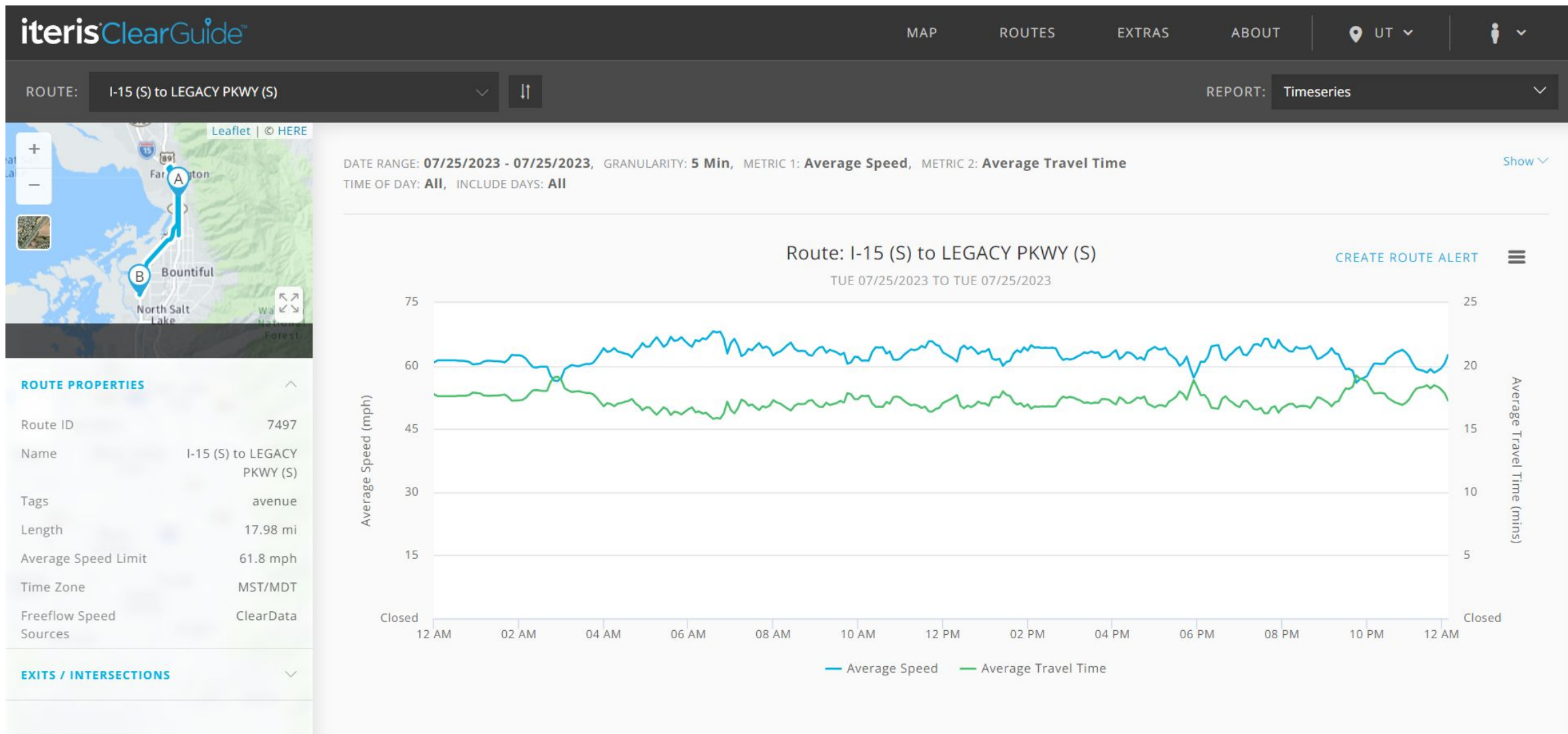


# Timeseries







# Timeseries

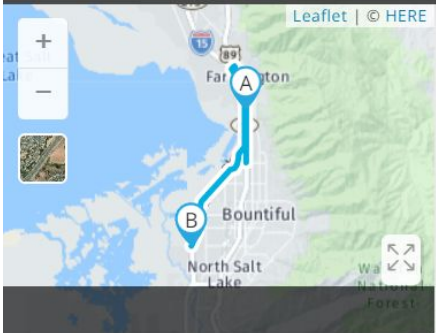


# Route Alerts: Create

iterisClearGuide<sup>™</sup>

MAP

ROUTE: I-15 (S) to LEGACY PKWY (S)  



ROUTE PROPERTIES

Route ID7497

NameI-15 (S) to LEGACY PKWY (S)

Tagsavenue

Length17.98 mi

Average Speed Limit61.8 mph

Time ZoneMST/MDT

Freeflow SpeedClearData

Sources

EXITS / INTERSECTIONS

Time Range

1D

7D

1M

3M

6M

YTD

1Y

From07/25/2023 → 07/25/2023

Metric 1Average Speed

Metric 2Select

+ Show Advanced

TIME OF DAY: All, INCLUDE DAYS: All

OutputGraph

RENDER

ROUTES

EXTRAS

ABOUT

UT

My Routes

System Routes

Search

Create

Alerts

MULTI-ROUTE REPORTS

Performance

Time Comparison

Report Card

# Route Alerts: Create

## Create Route Alert

Route Alert Name

Alert Tags

Enter alert tags



### SELECT ROUTE(S)

Search by Route Name

Filter Routes

✓ My routes

Search by Route Tags

Enter route tags

All

Any

UPDATE TO LIST ONLY ROUTES IN MAP VIEW

- |  |          |   |
|--|----------|---|
| + I-15 (S) to LEGACY PKWY (S)                    | ID: 7497 | i |
| + LEGACY PKWY (N) to I-15 (S)                    | ID: 7498 | i |
| + SB Clearfield (700 S) to Taylorsville (6200 S) | ID: 7522 | i |
| + NB Taylorsville (6200 S) to Clearfield (700 S) | ID: 7523 | i |





# Route Alerts: Create

## SELECT ALERT TYPE

☐ High Travel Time

Travel Time more than  minutes

☐ Low Speed

Speed less than  miles per hour

☐ Closure

At least one link on the route is closed

## SELECT ALERT DATE AND TIME RANGE AND DAYS

☐ Enable alert based on custom date/time range

## SELECT ALERT THRESHOLDS

How long must the alert condition be sustained before the alert is activated  ▼

How long must the alert condition be absent before the alert is cleared  ▼

## EMAIL OPTIONS

# Route Alerts: Email



## Route Alert Activated

Alert Name: EB Cottonwood

Route Name: EB SR-190 (Big Cottonwood) Wasatch Blvd to Brighton

Route is slower than 30 mph.

For 15 consecutive minute(s)

Alert Activated: 07/07/23 09:00 MDT

Speed at Activation: 23.4 mph

### ALERT QUICKLINKS

[VIEW TIMESERIES](#)[VIEW ROUTE MAP](#)[MANAGE ALERT  
SETTING](#)[VIEW SPEED MAP](#)

## Route Alert Cleared

Alert Name: EB Cottonwood

Route Name: EB SR-190 (Big Cottonwood) Wasatch Blvd to Brighton

Route is faster than 30 mph.

For 15 consecutive minute(s)

Alert Activated: 07/07/23 09:00 MDT

Alert Cleared: 07/07/23 09:40 MDT

Alert was active for: 40 minutes

Speed at Activation: 23.4 mph

Speed at Clearance: 34.3 mph

### ALERT QUICKLINKS

[VIEW TIMESERIES](#)[VIEW ROUTE MAP](#)[MANAGE ALERT  
SETTING](#)[VIEW SPEED MAP](#)

# Route Alert Cleared

Alert Name: Bluff St\_TT Alert Test

Route Name: EB\_BLUFF ST to FOREMASTER

Travel time is less than 4 minutes.

For 15 consecutive minute(s)

Alert Activated: 09/12/22 21:55 M

Alert Cleared: 09/12/22 23:05 M

Alert was active for: 1 hour 10 minutes

Travel Time at  
Activation: 3.7 minutes

Travel Time at  
Clearance: 3.4 minutes

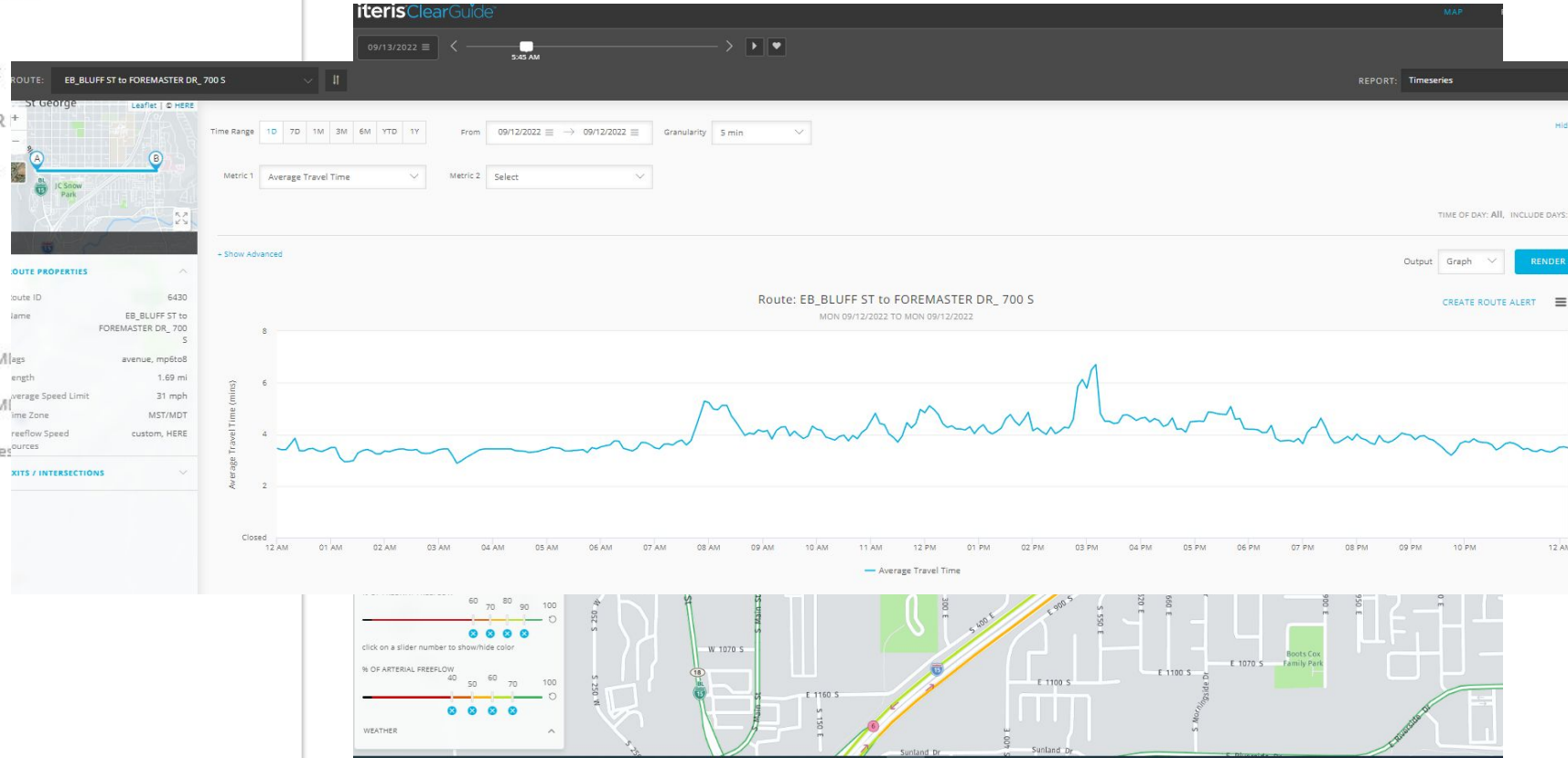
## ALERT QUICKLINKS

VIEW TIMESERIES

VIEW ROUTE MAP

MANAGE ALERT  
SETTING

VIEW SPEED MAP





# Route Alert: Alert History

## Route Alerts

[CREATE NEW](#)[My Alerts](#)[Alert History](#)

Date

08/11/2022 → 08/25/2022



High Travel Time



Low Speed



Closure

Route Name

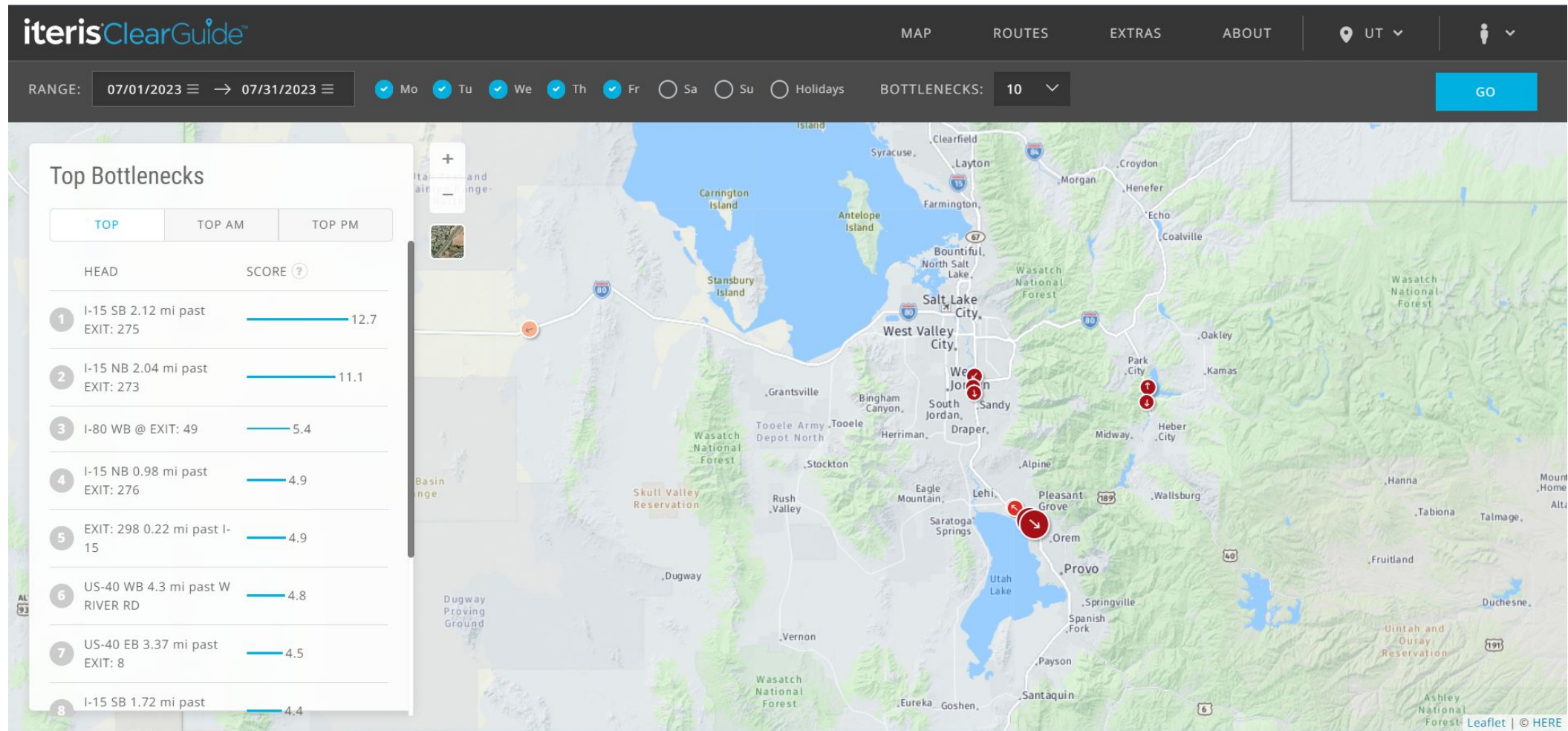
Alert Name

Tags

[+ SHOW ADVANCED](#)[SEARCH](#)

| ROUTE NAME                         | ALERT NAME                                 | ALERT TYPE       | THRESHOLD | ACTIVATED <sup>?</sup> | CLEARED <sup>?</sup> | ACTIVATION VALUE <sup>?</sup> | CLEAR VALUE <sup>?</sup> | DURATION <sup>?</sup> |                            |
|------------------------------------|--|------------------|-----------|------------------------|----------------------|-------------------------------|--------------------------|-----------------------|----------------------------|
| RMP Project 2022_Eastbound         | RMP Project Eastbound-NA                   | High Travel Time | 10 min    | 08/10/2022 10:55 PM    | 08/11/2022 06:15 AM  | 10.2 min                      | 10 min                   | 7h 20m                | <a href="#">TIMESERIES</a> |
| EB_BLUFF ST to FOREMASTER DR_700 S | Bluff St _TT Alert Test                    | High Travel Time | 3.5 min   | 08/11/2022 05:45 AM    | 08/11/2022 06:20 AM  | 3.7 min                       | 3.5 min                  | 35 min                | <a href="#">TIMESERIES</a> |
| EB_BLUFF ST to FOREMASTER DR_700 S | Bluff St _TT Alert Test                    | High Travel Time | 3.5 min   | 08/11/2022 07:10 AM    | 08/11/2022 09:40 PM  | 3.6 min                       | 3.5 min                  | 14h 30m               | <a href="#">TIMESERIES</a> |
| WB US-6 Memorial Day Inbound       | WB US 6_bug test_Speed60                   | Low Speed        | 60 mph    | 08/11/2022 07:25 AM    | 08/11/2022 09:45 AM  | 59.8 mph                      | 61.1 mph                 | 2h 20m                | <a href="#">TIMESERIES</a> |
| RMP Project 2022_Eastbound         | RMP Project Eastbound-NA                   | High Travel Time | 10 min    | 08/11/2022 10:00 AM    | 08/11/2022 10:35 AM  | 10.8 min                      | 9.5 min                  | 35 min                | <a href="#">TIMESERIES</a> |
| WB US-6 Memorial Day Inbound       | WB US 6_bug test_Speed60                   | Low Speed        | 60 mph    | 08/11/2022 10:35 AM    | 08/11/2022 08:30 PM  | 59.2 mph                      | 62.4 mph                 | 9h 55m                | <a href="#">TIMESERIES</a> |
| I-15 (S) (I-215 to Highland Dr)    | I-15 (S) (I-215 to Highland Dr)_speed_high | Low Speed        | 34 mph    | 08/11/2022 02:00 PM    | 08/11/2022 02:40 PM  | 28.1 mph                      | 34.6 mph                 | 40 min                | <a href="#">TIMESERIES</a> |
| RMP Project 2022_Eastbound         | RMP Project Eastbound-NA                   | High Travel Time | 10 min    | 08/11/2022 05:30 PM    | 08/11/2022 06:00 PM  | 10.2 min                      | 10 min                   | 30 min                | <a href="#">TIMESERIES</a> |
| I-15 (S) (I-215 to 7200 S)         | I-15 S 7200 (I 215 to 7200 S)_speed_high   | Low Speed        | 25 mph    | 08/11/2022 05:55 PM    | 08/11/2022 06:25 PM  | 24.6 mph                      | 31.9 mph                 | 30 min                | <a href="#">TIMESERIES</a> |

# Extras: Bottleneck



# Training Videos

<https://www.udot.utah.gov/connect/business/traffic-data/traffic-operations-data/>

Training for Freeway PeMS

Training for ClearGuide

- [ClearGuide Map Basics](#)
- [Creating a Route in ClearGuide](#)
- [Construction Alerts Training](#)



# Contact Information

**Kelly Njord**

Email: [kellynjord@utah.gov](mailto:kellynjord@utah.gov)

**Nuzhat Azra**

Email: [nazra@avenueconsultants.com](mailto:nazra@avenueconsultants.com)

Phone: 801-716-2440

