

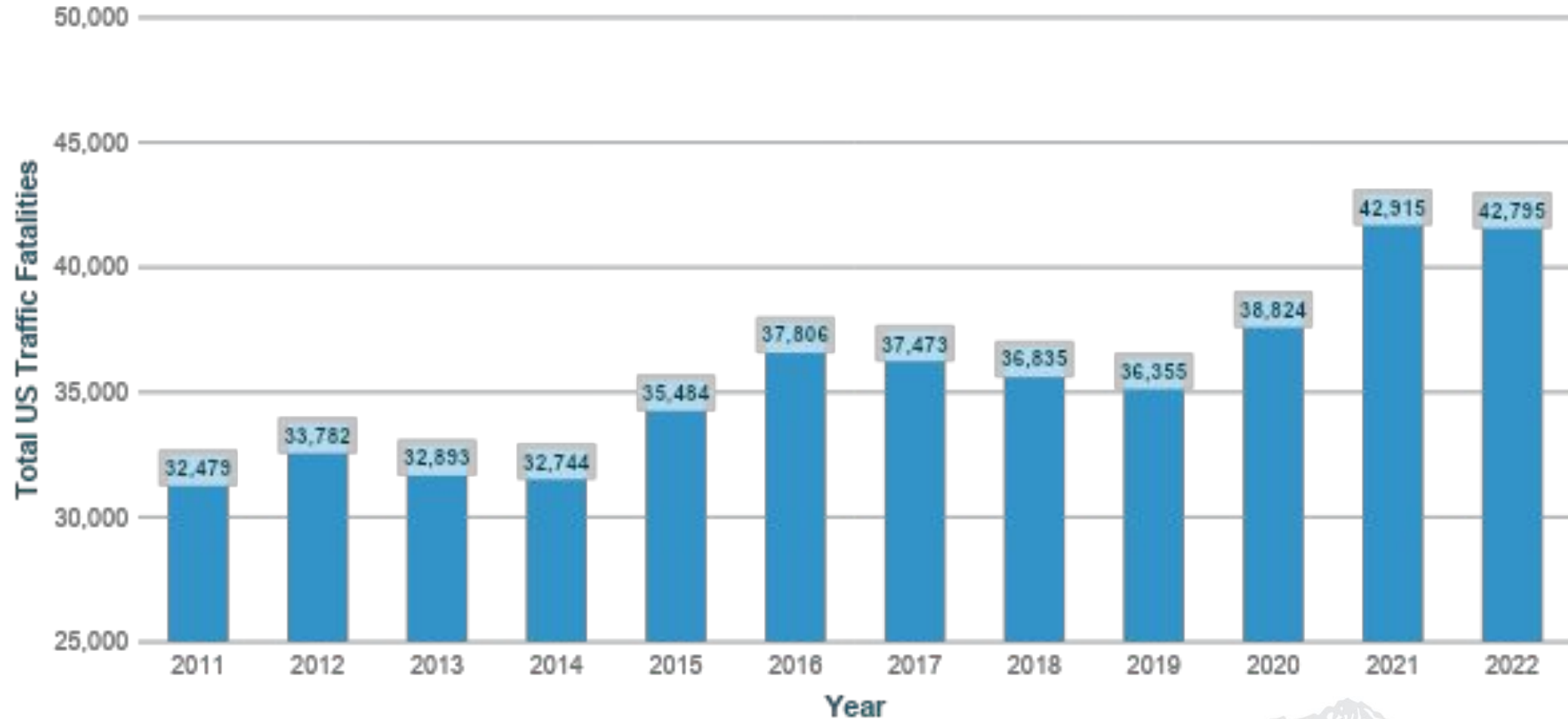


May 29, 2024

Wasatch Front Area Comprehensive Safety Action Plan

Thousands of Lives are Lost Each Year

Total US Traffic Fatalities (2011-2022)



Safe Streets and Roads for All (SS4A)

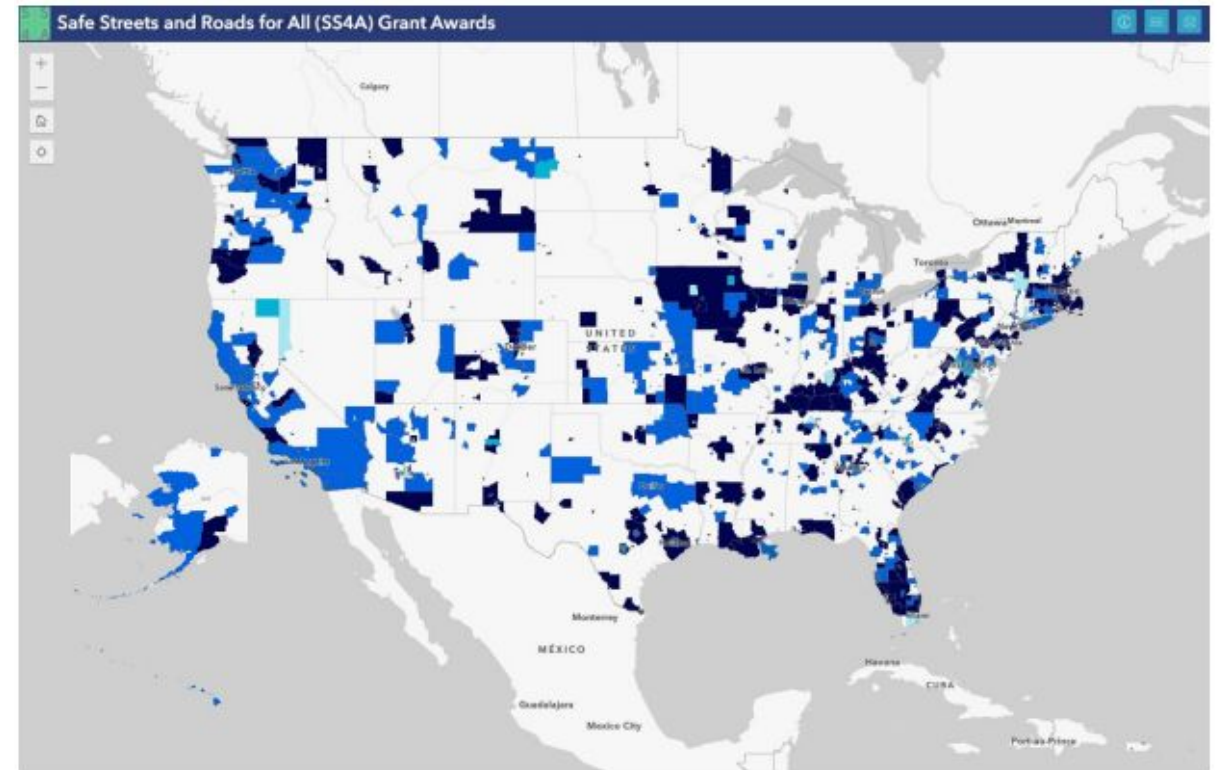
Bipartisan Infrastructure Law (BIL)
established SS4A Grant Program
\$5 billion over 5 years (FY22-26)

Two grant types:

- Planning & Demonstration
- Implementation

FY 2022 and FY 2023

- More than \$1.7 billion awarded
- 1,046 Planning & Demonstration Grants
- 85 Implementation Grants



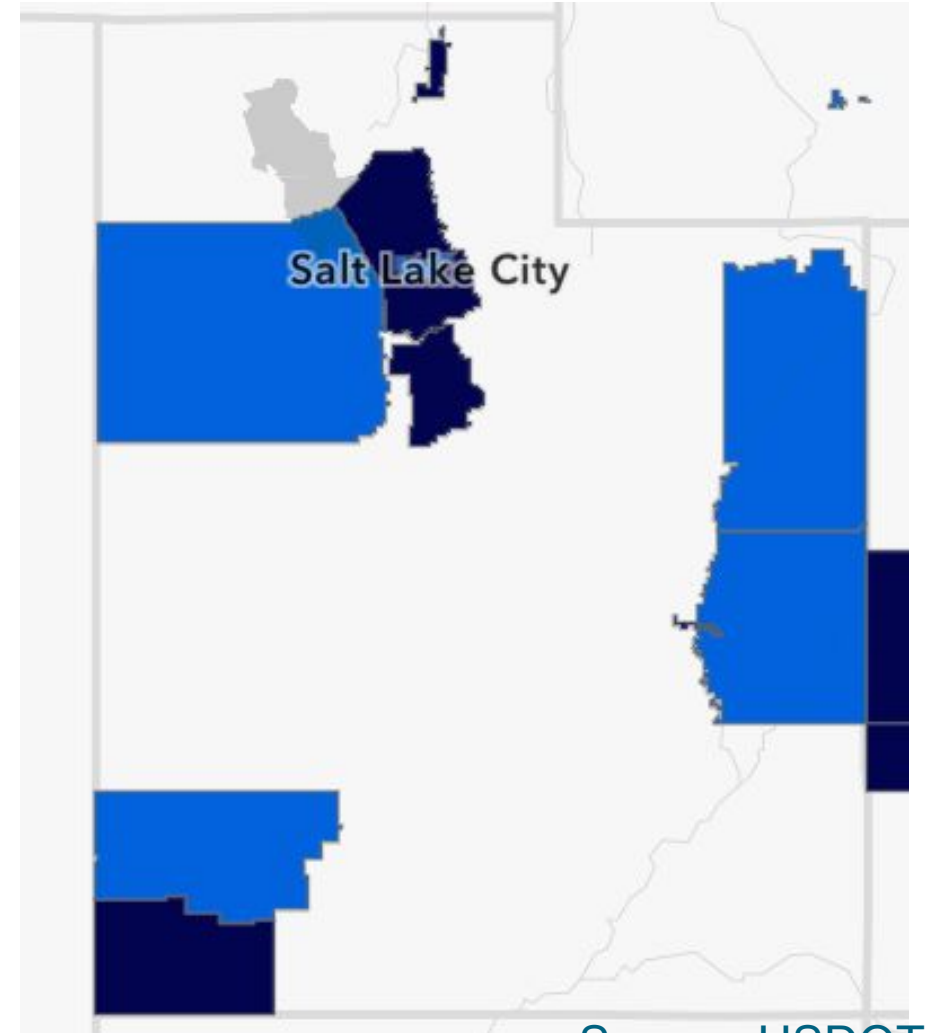
Awards map:

<https://www.transportation.gov/grants/ss4a/cumulative-awards>

Source: USDOT

Safe Streets and Roads for All (SS4A)

- Cache Metropolitan Planning Organization
- Cedar City
- City of Green River
- City of Moab
- City of Orem
- Five County Association of Governments
- Iron County
- Mountainland Association of Governments
- Richmond City
- Salt Lake City
- Tooele County
- Uintah County
- **Wasatch Front Regional Council**



Source: USDOT

WFRC Comprehensive Safety Action Plan



“A plan to provide local governments the means to make strategic roadway safety improvements.”

CSAP meets eligibility requirements that allow local jurisdictions to apply for SS4A Implementation Grant program, and serve as a resource for jurisdictions to apply

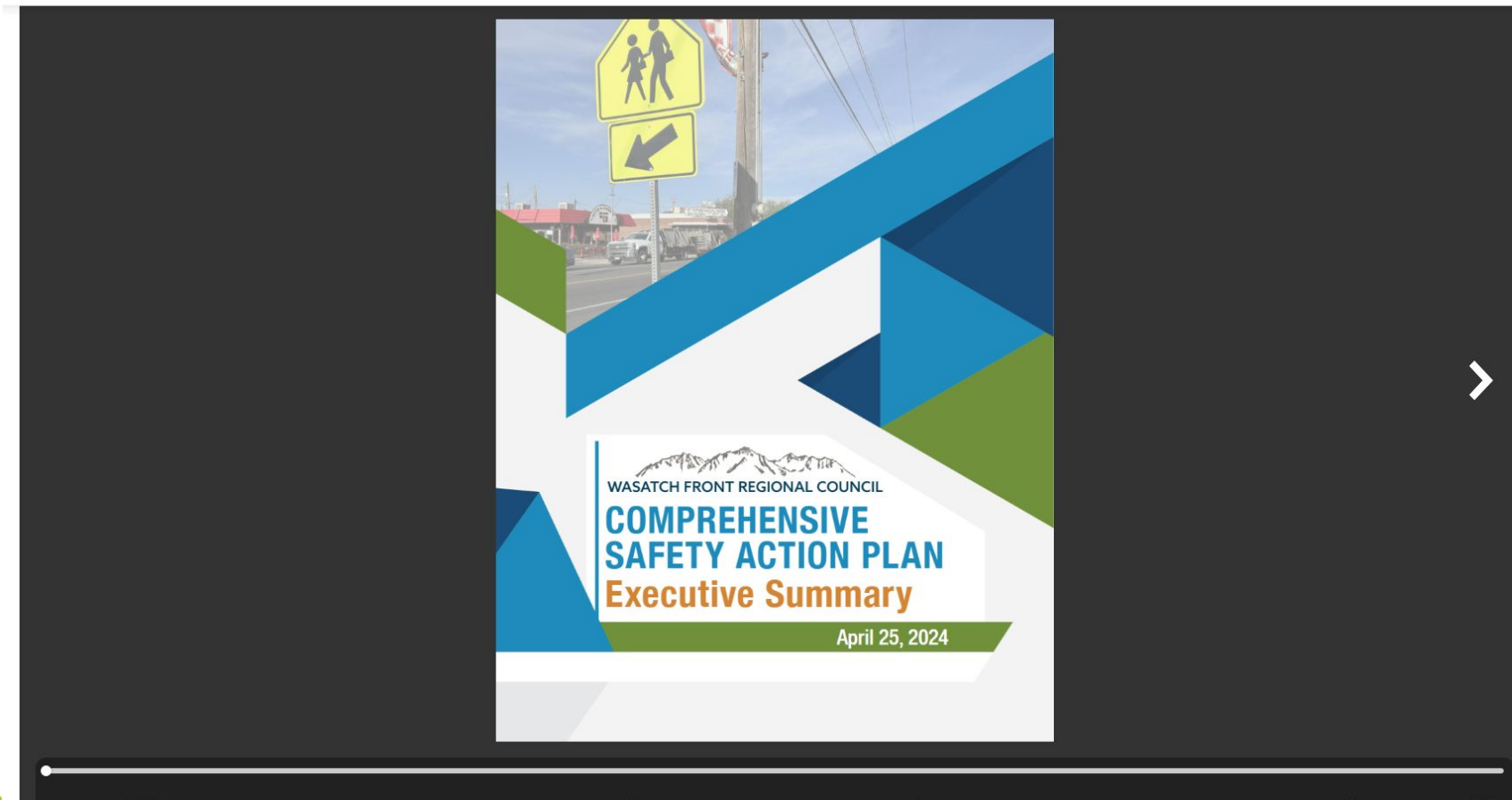


WFRC Comprehensive Safety Action Plan



<https://wfrc.org/programs/csap/>

[Home](#) [About](#) [Committees](#) [Vision & Plans](#) [Programs](#) [Maps & Data](#) [Studies](#) [Public Involvement](#) [Contact](#) [Q](#)

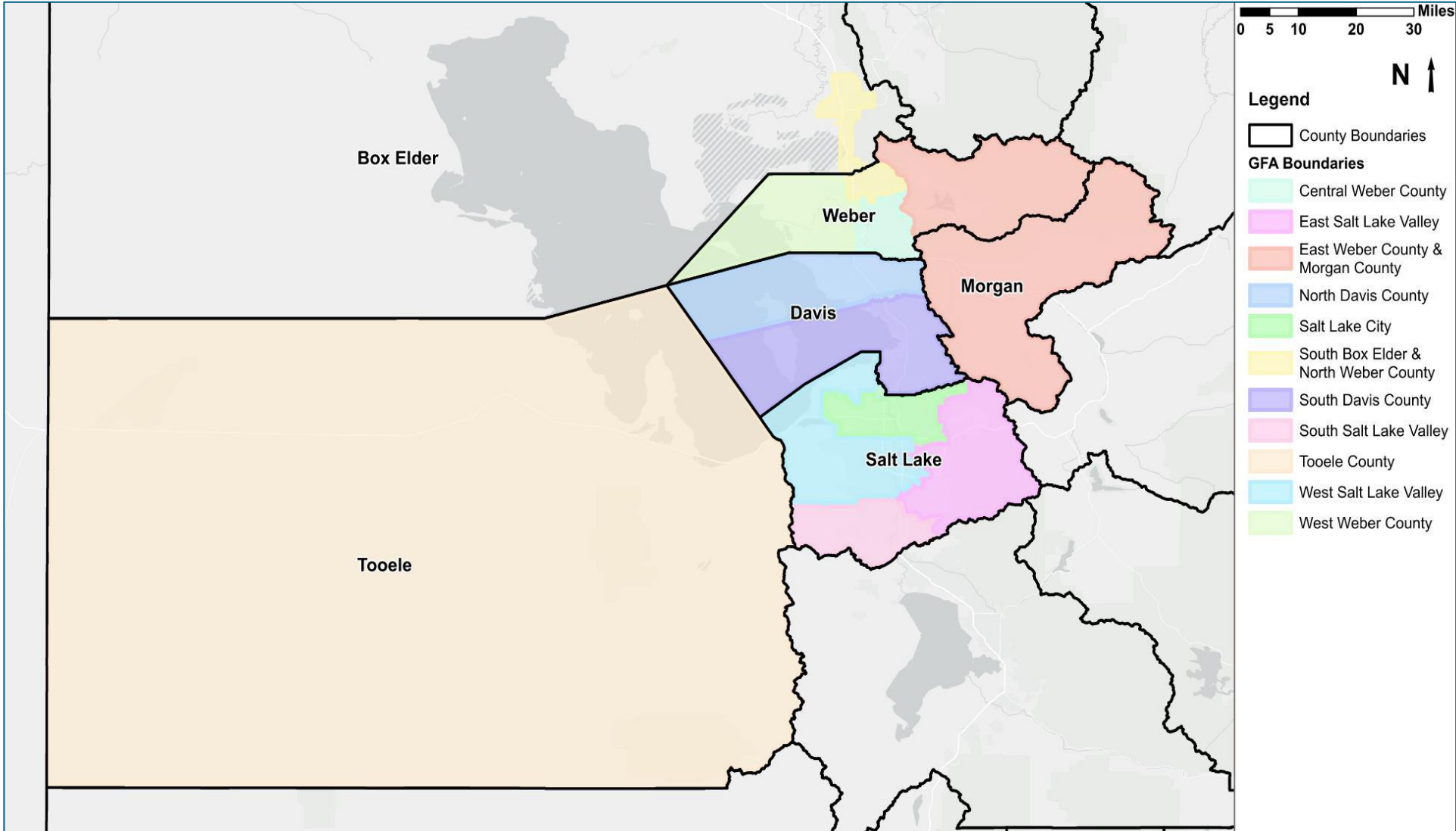


WFRC Comprehensive Safety Action Plan

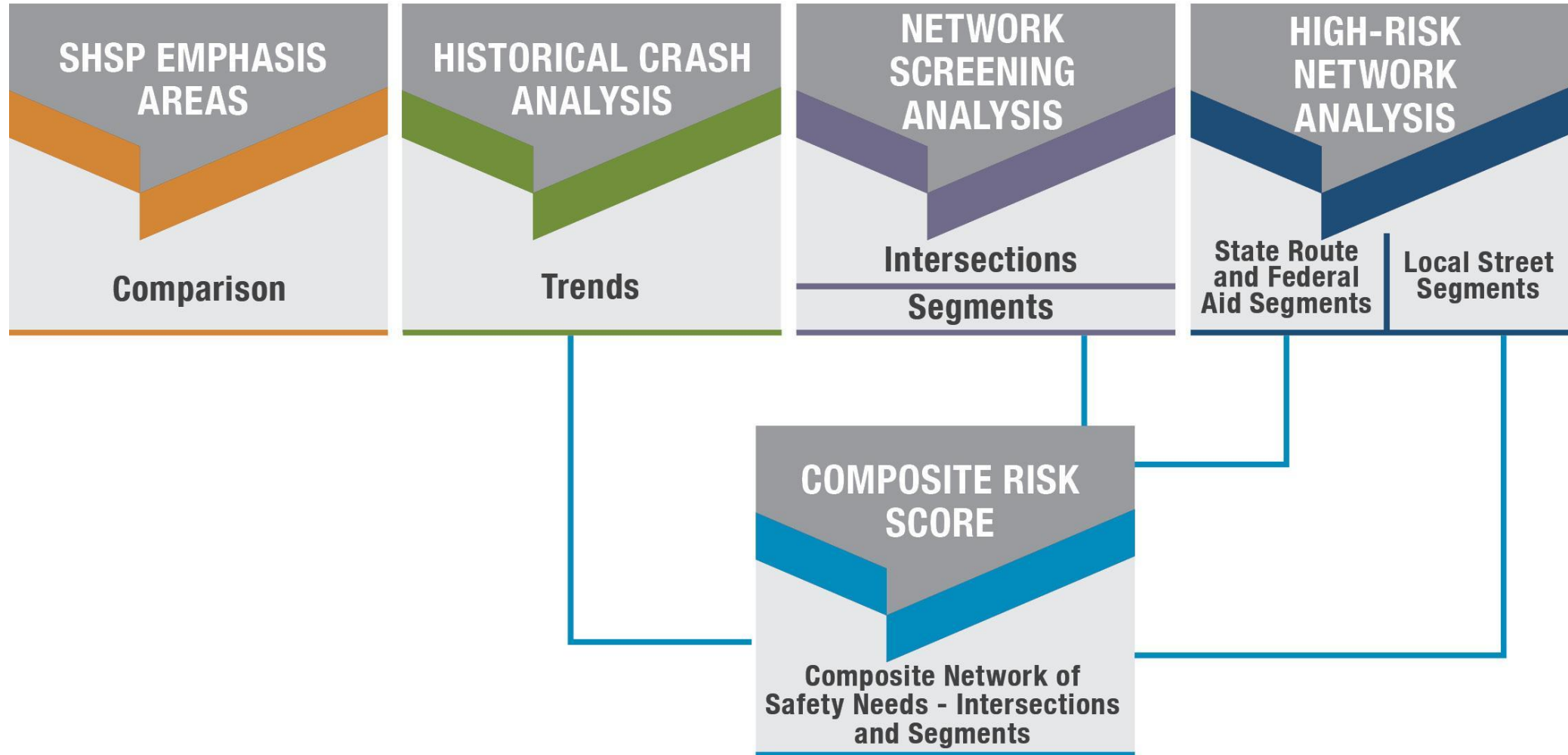


1. Introduction
2. Regional Safety Commitment
3. Safe System Approach
4. CSAP Process and Stakeholder Engagement
5. Regional Safety Analysis Results
6. Equity Analysis
7. Strategies and Solutions
8. Best Practices for Policies and Procedures
9. Monitoring and Evaluation

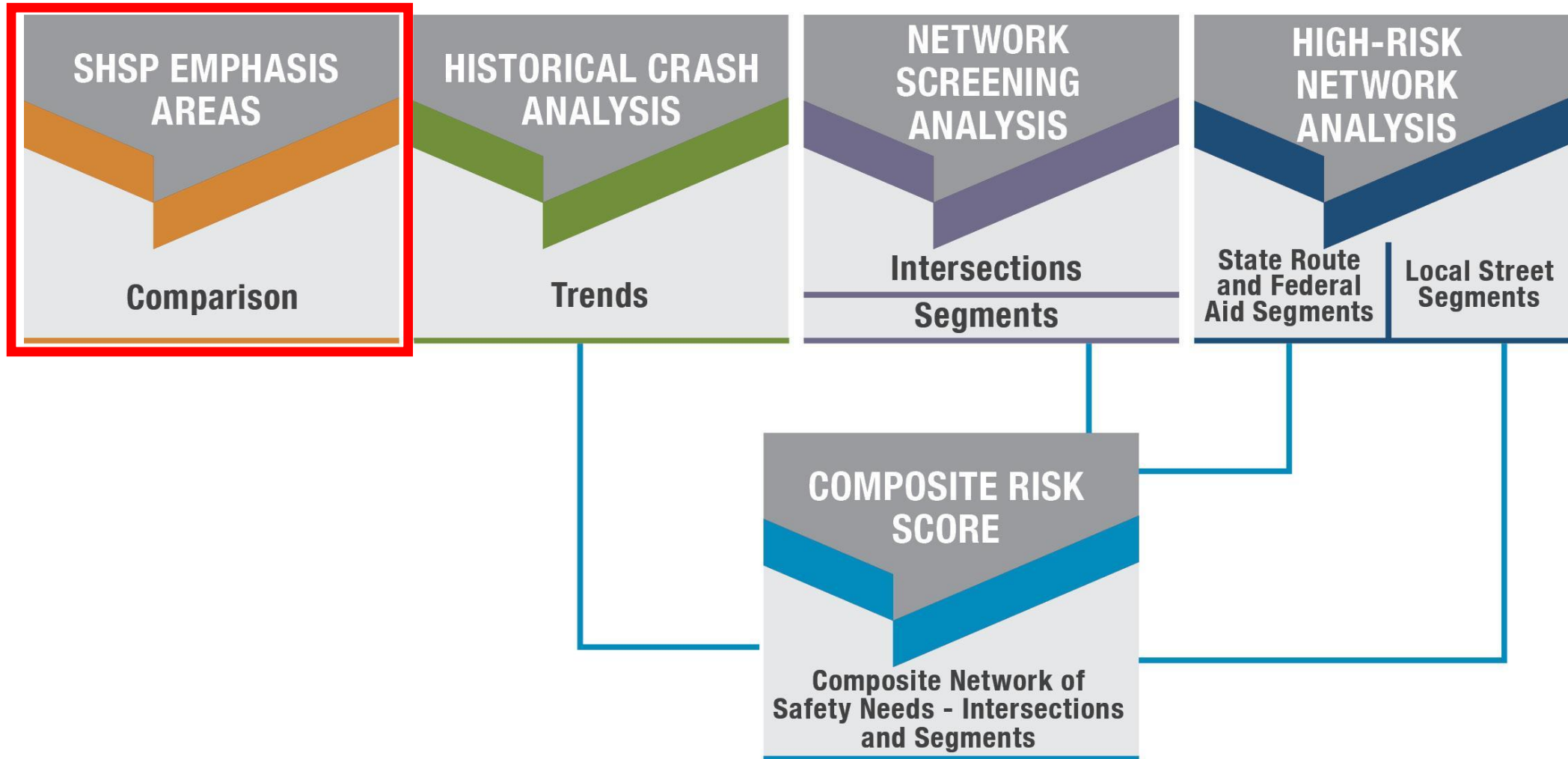
WFRC Study Area



Safety Analysis



Safety Analysis



Safety Analysis



Intersections



Roadway Departure



Speed Related



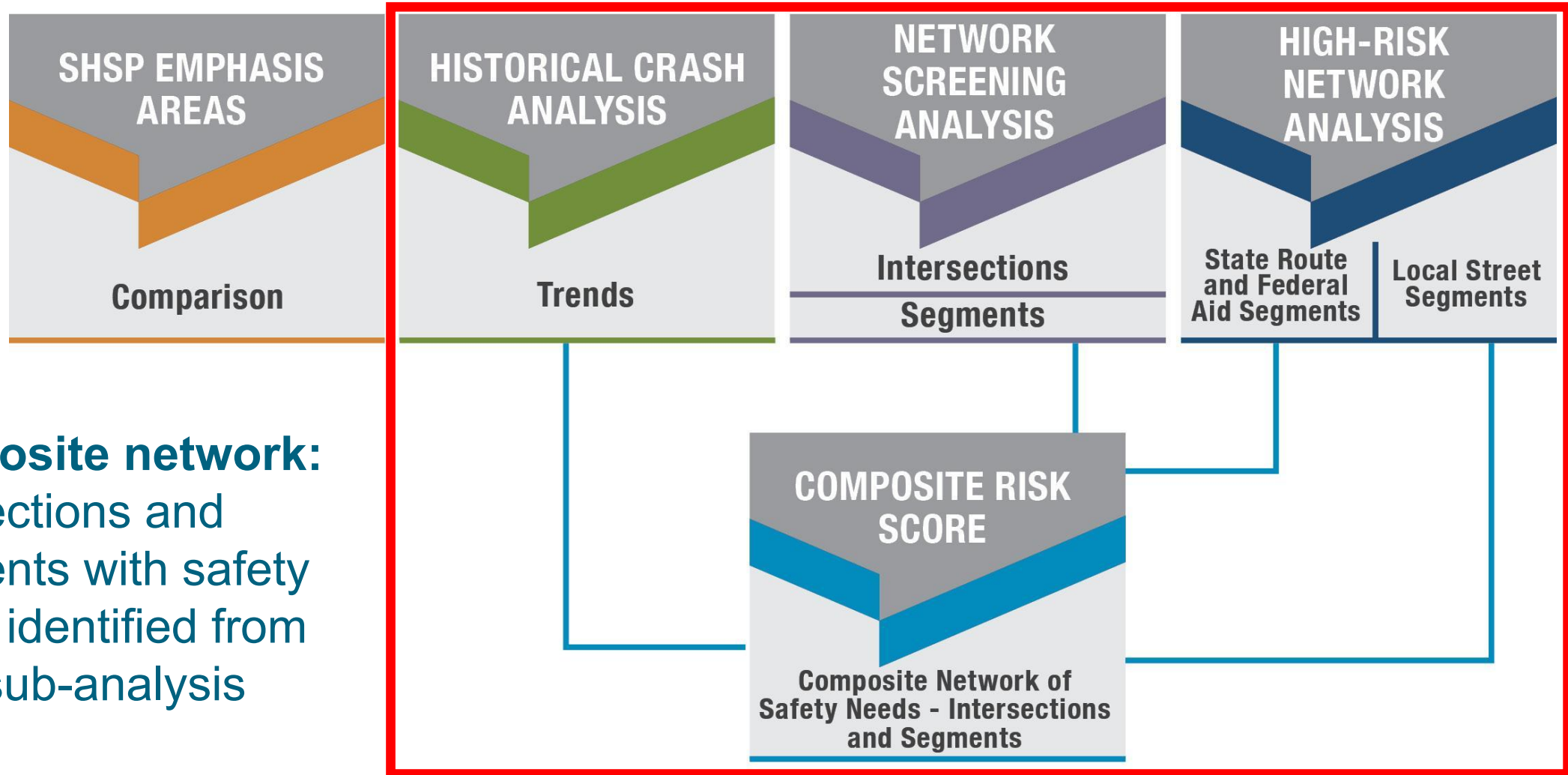
Pedestrians

CATEGORY	UTAH SHSP SAFETY EMPHASIS AREA*	GEOGRAPHIC FOCUS AREA (GFA) RANK														
		STATEWIDE		WFRC		SOUTH BOX ELDER & NORTH WEBER	WEST WEBER COUNTY	CENTRAL WEBER COUNTY	EAST WEBER & MORGAN COUNTY	NORTH DAVIS COUNTY	SOUTH DAVIS COUNTY	WEST SALT LAKE VALLEY	SALT LAKE CITY	EAST SALT LAKE VALLEY	SOUTH SALT LAKE VALLEY	TOOELE COUNTY
		FATAL/SERIOUS INJURIES*	RANK	FATAL/SERIOUS INJURIES	RANK											
DRIVER	Teen Driver	1,640	4	751	4	7	2	7	5	3	4	3	8	8	2	7
	Senior Driver	1,508	6	700	6	5	3	4	8	6	6	5	9	4	9	6
	Speed-Related	2,133	3	936	3	2	10	3	3	4	3	2	3	3	3	3
	Aggressive Driving	555	11	297	10	9	11	10	6	11	10	10	10	10	11	11
	Distracted Driving	718	10	286	11	10	11	11	10	9	11	10	12	11	10	10
	Impaired Driving	1,184	8	623	8	6	7	9	7	10	5	8	7	6	7	4
	No Safety Restraints	1,542	5	599	9	4	6	8	4	8	8	9	6	9	6	4
ROADWAY	Intersections	3,567	1	2,163	1	3	1	1	8	1	1	1	1	1	1	2
	Roadway Departure	2,931	2	1,014	2	1	5	5	1	5	2	4	4	2	4	1
SPECIAL USERS	Motorcycle	1,457	7	750	5	8	4	6	2	2	7	6	5	5	5	8
	Pedestrian	912	9	636	7	10	8	2	12	7	8	7	2	6	8	9
	Bicycle	280	12	167	12	12	9	12	11	12	12	12	11	11	12	12

*Note that more than one emphasis area may be associated with a single crash.
Reflects data from January 1, 2018 - December 31, 2022



Safety Analysis



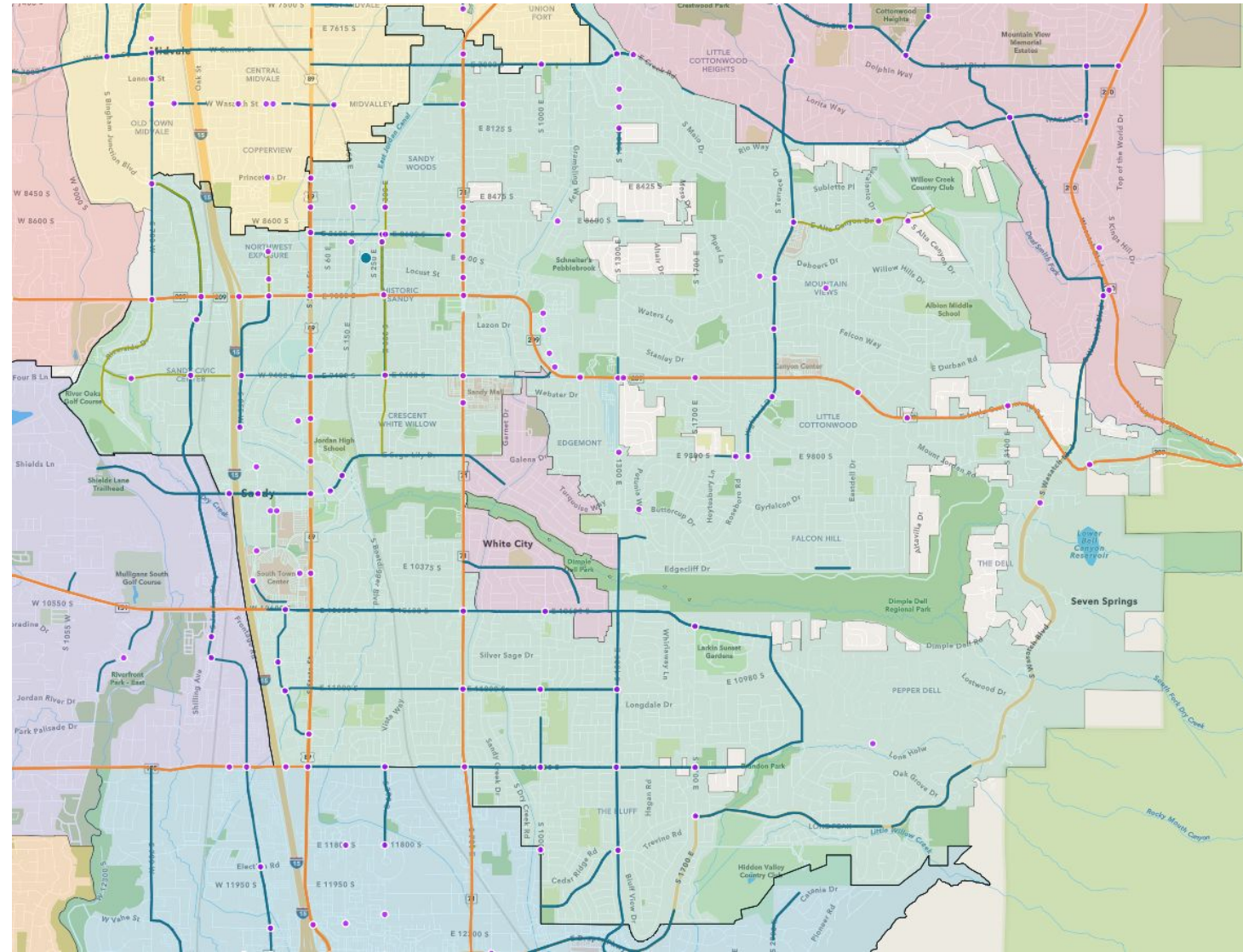
Composite network:
intersections and
segments with safety
needs identified from
each sub-analysis

Safety Analysis Results

Composite Network Composite Network

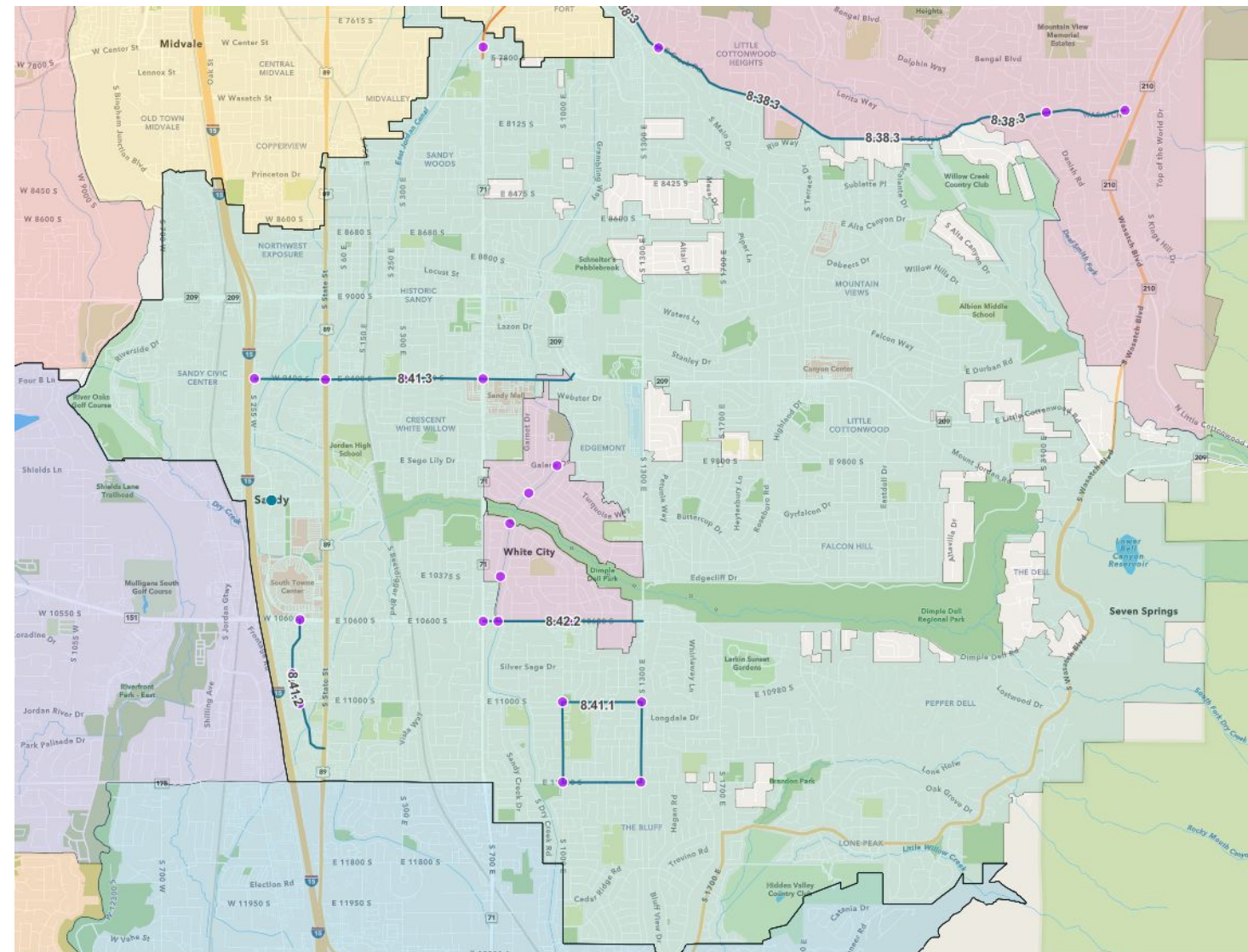
- Segments
 - State Routes (orange)
 - Federal-Aid Routes (blue)
 - Local Streets (green)
- Intersections (pink)

Local jurisdictions can access detailed information about safety needs on a specific segment using the **GIS Story Map**



Example Case Study Project Locations

City	Project #	Location
Sandy	# 8.41.1	School Area (Alta High School) Improvements 1000 East, 1300 E, 11400 South
Sandy	# 8.41.2	Auto Mall Drive from 10600 South to State Street
Sandy	# 8.41.3	9400 South from Monroe Street to SR 209



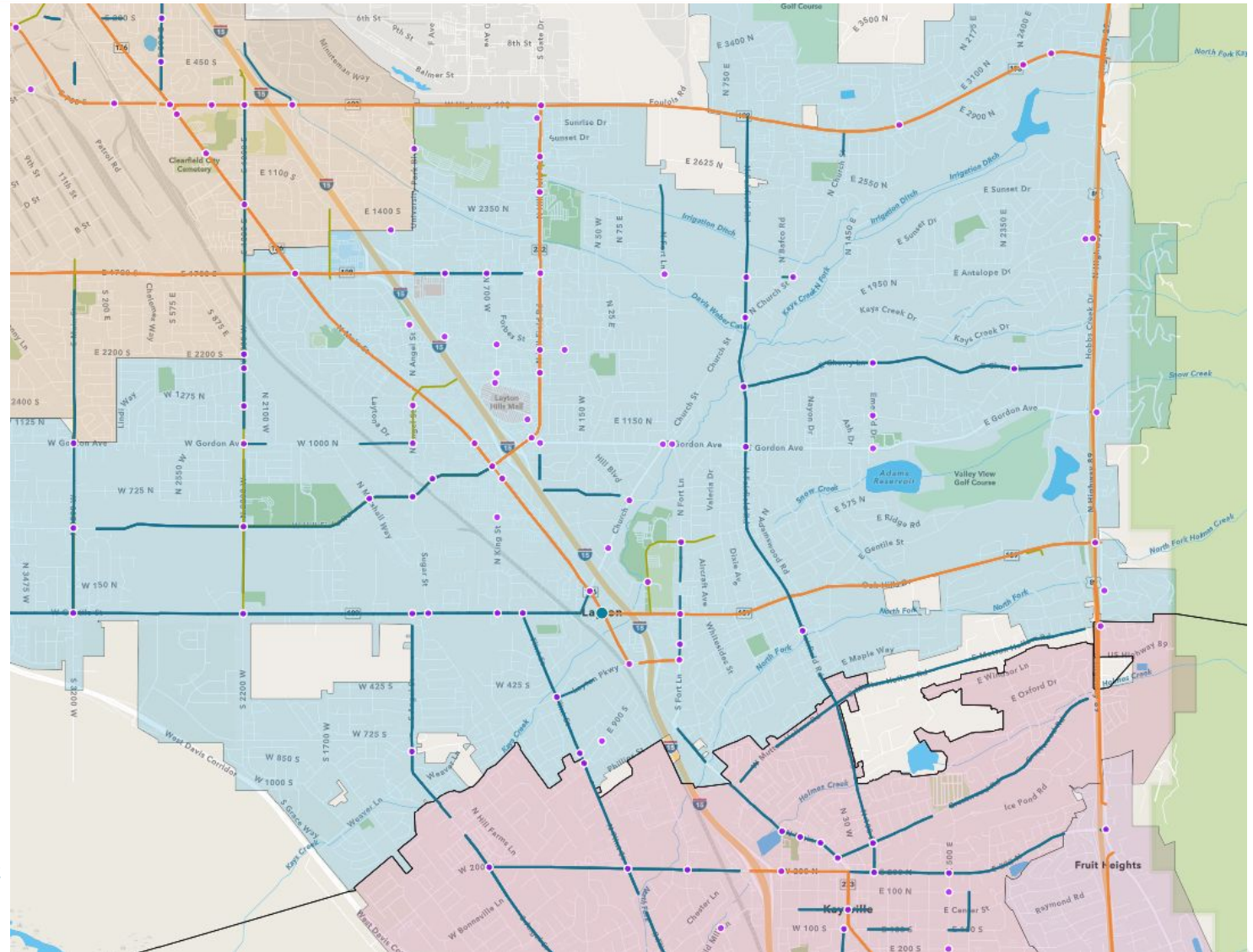
Local jurisdictions can access detailed information about safety needs on specific segment via the **GIS Story Map**

Safety Analysis Results

Composite Network

- Segments
 - State Routes (orange)
 - Federal-Aid Routes (blue)
 - Local Streets (green)
- Intersections (pink)

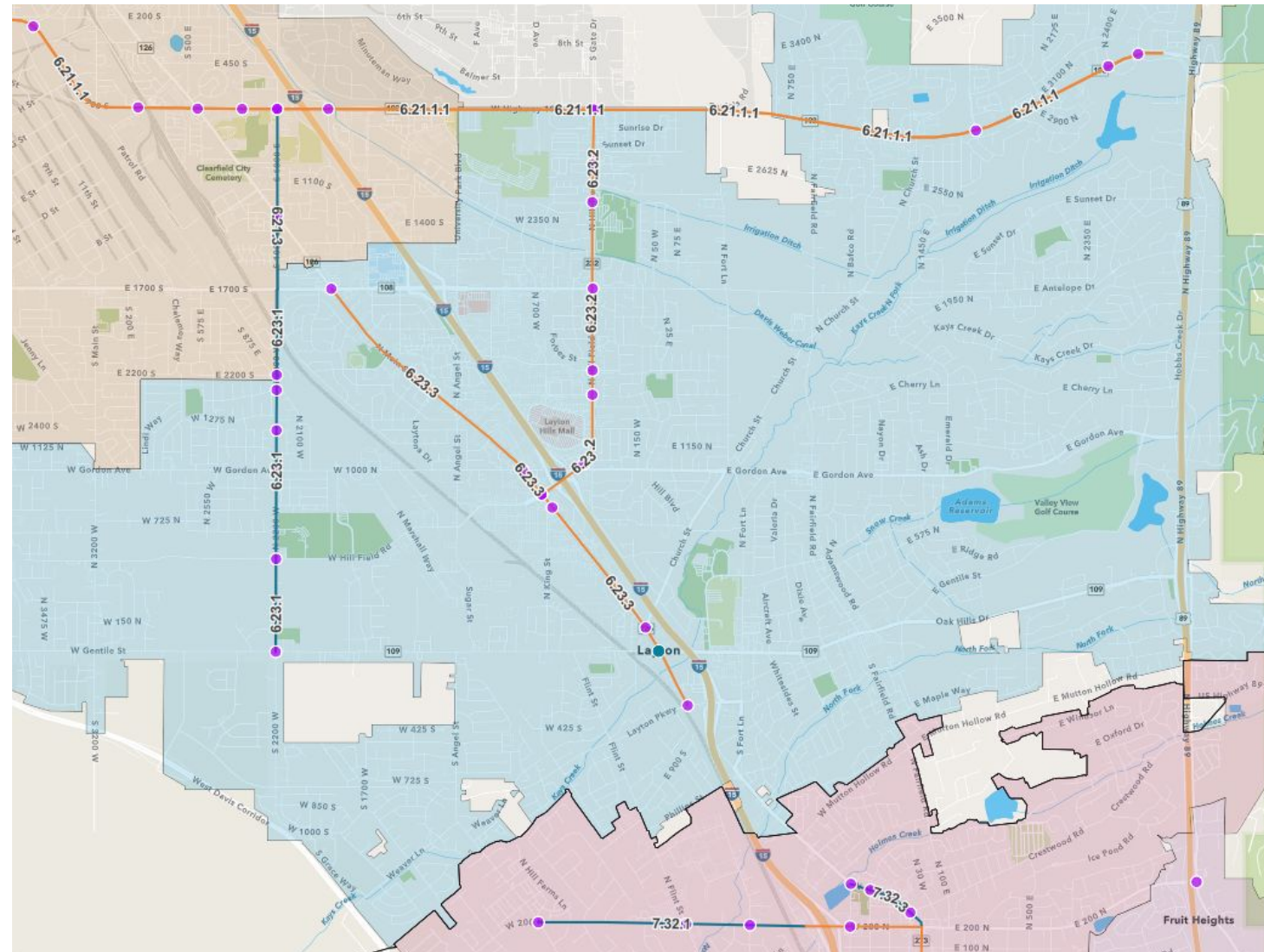
Local jurisdictions can access detailed information about safety needs on a specific segment using the **GIS Story Map**



Example Case Study Project Locations

City	Project #	Location
Layton	# 6.23.1	2200 West from Antelope Drive to Gentile Street
Layton	# 6.23.2	North Hill Field Road (SR 232) from 700 South (SR 193) to Main Street (SR 126)
Layton	# 6.23.3	Main Street (SR 126) from Antelope Drive to Layton Parkway

Local jurisdictions can access detailed information about safety needs on specific segment via the **GIS Story Map**



WFRC Comprehensive Safety Action Plan

Appendix D: Geographic Focus Area (GFA) Safety and Analysis and Case Study Projects



[Appendix D: Technical Memo #1 – Safety Analysis](#)



[Appendix D1: South Box Elder & North Weber County](#)



[Appendix D2: Western Weber County](#)



[Appendix D3: Eastern Weber County & Morgan County](#)



[Appendix D4: Central Weber County](#)



[Appendix D5: Salt Lake City](#)



[Appendix D6: North Davis County](#)



[Appendix D7: South Davis County](#)



[Appendix D8: East Salt Lake Valley](#)



[Appendix D9: West Salt Lake Valley](#)



[Appendix D10: South Salt Lake Valley](#)



[Appendix D11: Tooele County](#)



Example Case Study Project Locations

Project # 8.41.2

- Project Description
- Crash Data
- Potential Improvements
- Planning Level Cost Estimate

Project Information Sheet

GFA(s): East Salt Lake Valley
Project Name: Auto Mall Drive from 10600 South to State Street
Jurisdiction(s): Sandy
Emphasis Areas: Intersections, Roadway Departures, Impaired Driving
Equity Priority: Medium

Date Prepared: 3/13/2024
Prepared By: MA
Checked By: EMF

Location Description

Roadway: Auto Mall Drive
From: 10600 South
To: State Street
Length: 0.91 miles

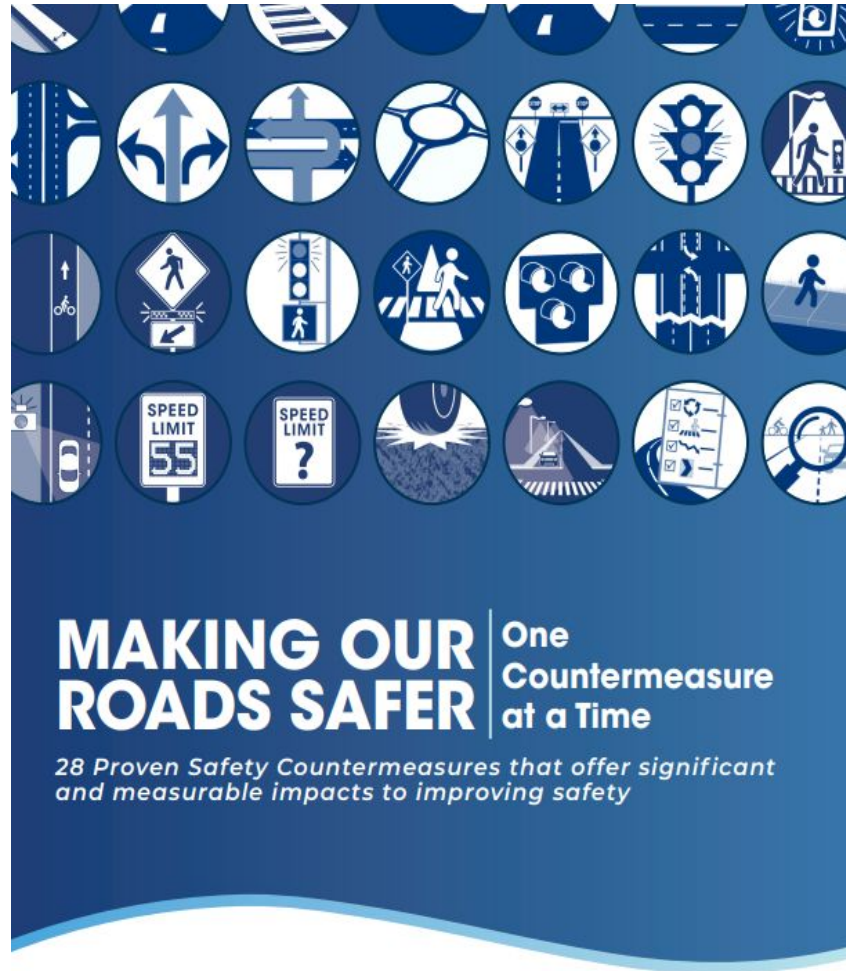
Key Intersection Locations:
10600 South
Motor Park Avenue
11000 South

Project Location Map

Map ID: 8.41.2



“Double-Down” on what works



Transportation agencies are strongly encouraged to consider widespread implementation of Proven Safety Countermeasures to accelerate the achievement of local, State, and National safety goals.

See CSAP Appendix F – Safety Countermeasure Toolbox

FWHA Proven Safety Countermeasures



Speed Management

- Appropriate Speed Limits for All Road Users
- Speed Safety Cameras
- Variable Speed Limits



Intersections

- Backplates with Retroreflective Borders
- Corridor Access Management
- Yellow Change Intervals
- Dedicated Left and Right-Turn Lanes at Intersections
- Reduced Left-Turn Conflict Intersections
- Roundabouts
- Systemic Application of Multiple Low-Cost Countermeasures at Stop-Controlled Intersections



Roadway Departures

- Enhanced Delineation for Horizontal Curves
- Longitudinal Rumble Strips and Stripes on Tw-Lane Roads
- Median Barriers
- Roadside Design Improvements at Curves
- Safety Edge
- Wider Edge Lines



Pedestrians/Bicyclists

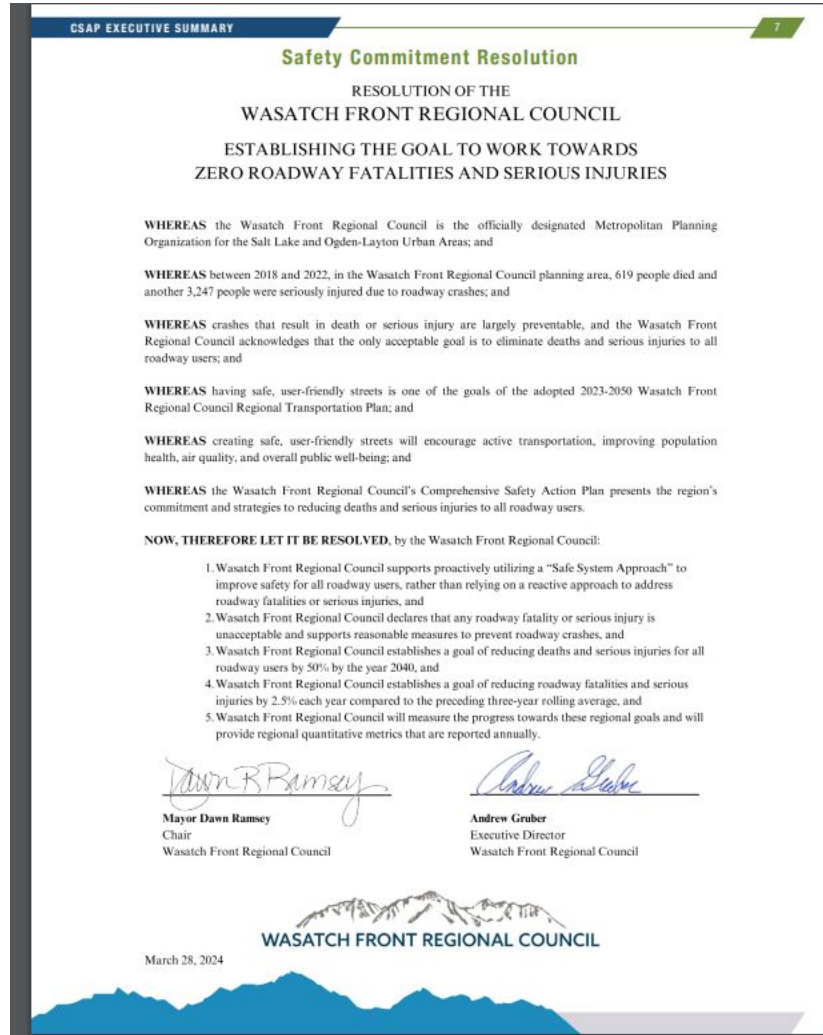
- Bicycle Lanes
- Crosswalk Visibility Enhancements
- Leading Pedestrian Interval
- Medians and Pedestrian Refuge Islands in Urban and Suburban Areas
- Pedestrian Hybrid Beacon
- Rectangular Rapid Flashing Beacons (RRFB)
- Road Diets (Roadway Configuration)
- Walkways



Crosscutting

- Lighting
- Local Road Safety Plans
- Pavement Friction Management
- Road Safety Audit

Safety Commitment Resolution



Regional Safety Commitment Resolution, adopted by WFRC on March 28, 2024

Establishes a goal:

- To reduce deaths and serious injuries for all roadway users **by 50%** by the year 2040
- To reduce roadway fatalities and serious injuries by **2.5%** each year compared to the preceding three-year rolling average

WFRC Comprehensive Safety Action Plan



<https://wfrc.org/programs/csap/>



Questions?



**Draft Projects to Programs
Recommended
for the
Draft 2025 - 2030 TIP
Public Review and Comment Period**

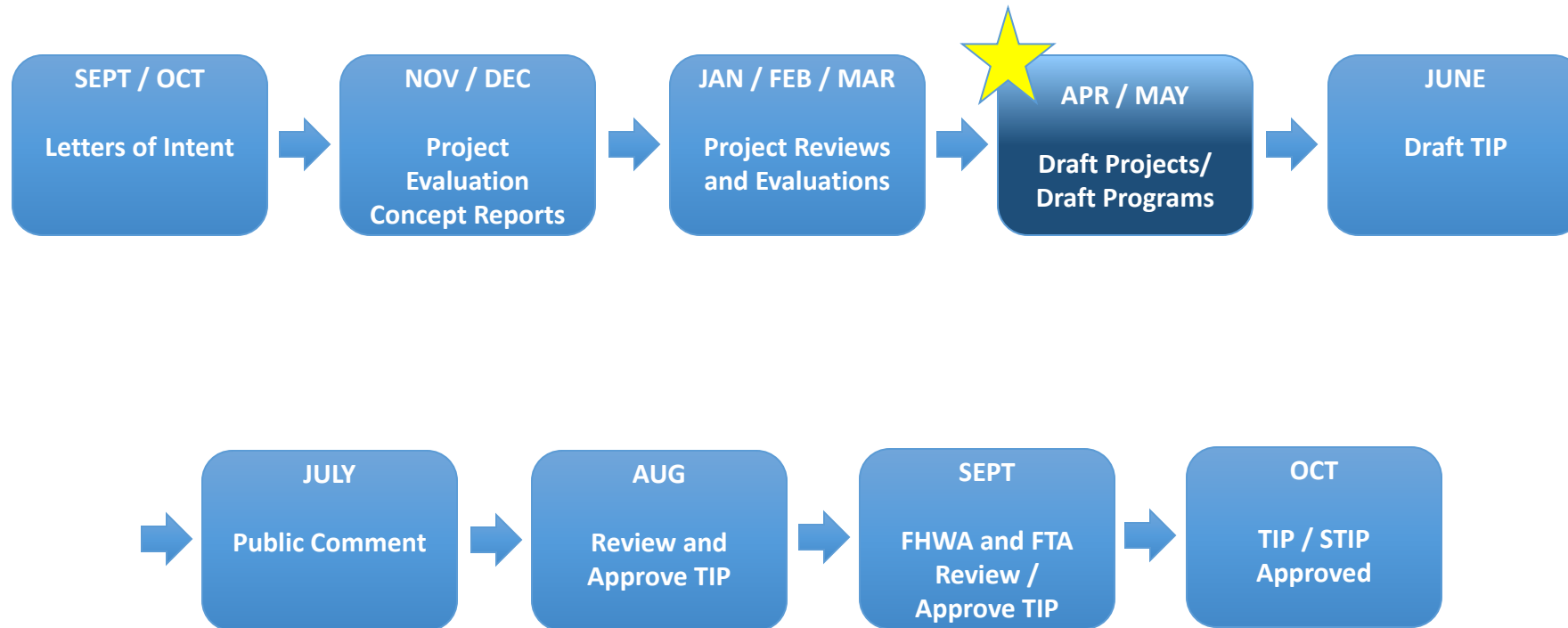
Trans Com TAC

May 29, 2024



WASATCH FRONT REGIONAL COUNCIL

Process for New Projects & The Draft TIP



The Evaluation Process

- **Letters of intent, concept reports, field reviews:**
All provide data for project evaluation and scoring
- **Other relevant professional considerations...**
- **Provide information and recommendations to the Technical Advisory Committees (TACs) to prioritize projects**
- **TACs recommend projects to Trans Com**
- **Trans Com review & recommend projects to WFRC**



Brigham City to Ogden

Ogden

- 1: Ogden City Greenbike Share Expansion
- 2: 2nd Street Reconstruction Phase 2
- 18: New Mt. Ogden Ops and Admin Facility

North Ogden

- 3: 2100 North Intersection Improvements
- 4: 1700 North - Drainage & Recons
- 5: North Ogden Canal Trail Crossing

Harrisville

- 6: 750 West Widening Phase 2
- 7: 750 West Widening Phase 1

Farr West

- 8: 1200 West Harrisville Road Roundabout
- 9: 2575 West Sidewalk and Bike Lane
- 10: 3300 North Widening Phase 2

Brigham

- 11: 1200 West Roadway Widening
- 12: 1200 West Roadway Widening
- 13: 1200 West Roadway Widening

Perry

- 14: 1200 West Widening Phase 1

Marriott-Slaterville

- 15: SR-126, Left Turn Lanes at 2500

Taylor

- 16: Widen 2550 South Phase 2

South Ogden

- 17: 40th St. and Chimes View Dr Roundabout

UTA

- 19: UTA New Radio System
- 20: UTA New Radio System

Funding Categories

- CMAQ
- CMAQ/CRP
- CMAQ/CRP/STP
- CMAQ/CRP/TAP
- CMAQ/STP
- CRP/STP
- TAP
- CRP
- STP

0 2 4 8 Miles

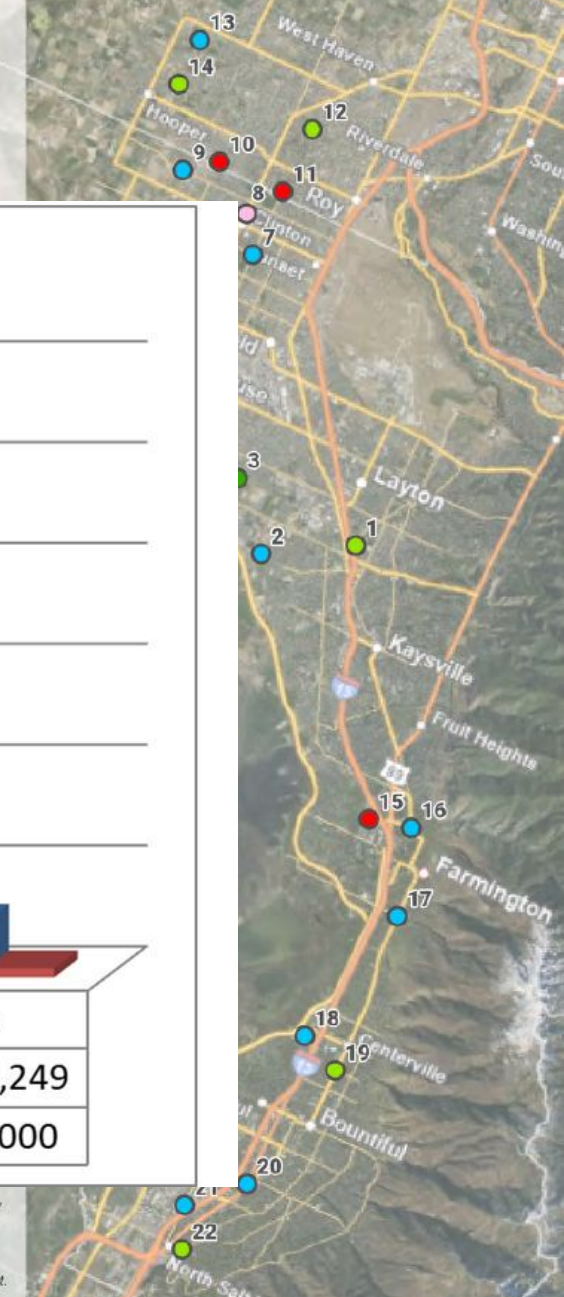
Points represent approximate location of project.

Ogden to North Salt Lake

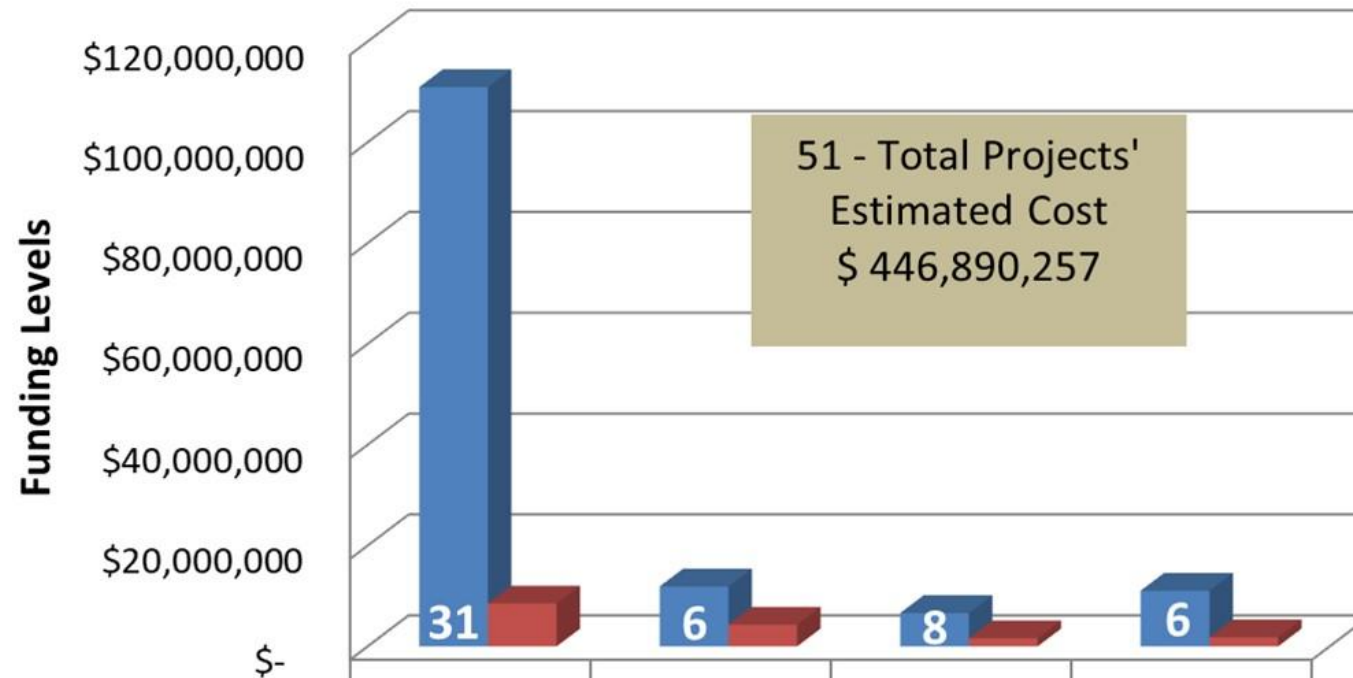
Layton

- 1: Kay's Creek Trail: Main Street to Hawthorne Drive
- 2: Layton Parkway Signal Project
- 3: West Hill Field Road Widening
- 4: Gentle Street SRTS Project

West Point



Ogden/ Layton Urban Area



	STP	CMAQ	TAP	CRP
Requested	\$110,938,000	\$11,894,249	\$6,613,116	\$11,044,249
Available	\$8,500,000	\$4,300,000	\$1,600,000	\$1,800,000

- CMAQ/STP
- CRP/STP
- TAP
- CRP
- STP

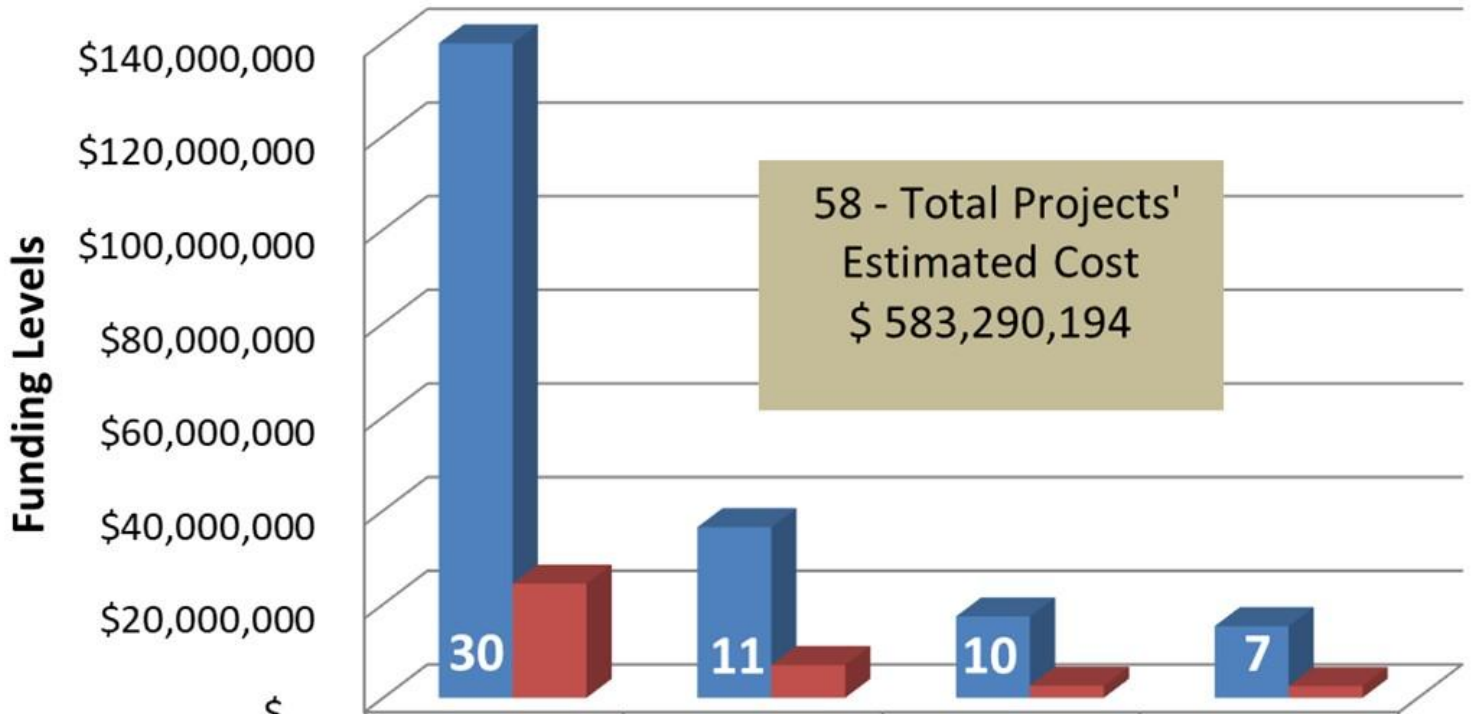
0 2 4 8 Miles

Points represent approximate location of project.

West Jordan to Bluffdale

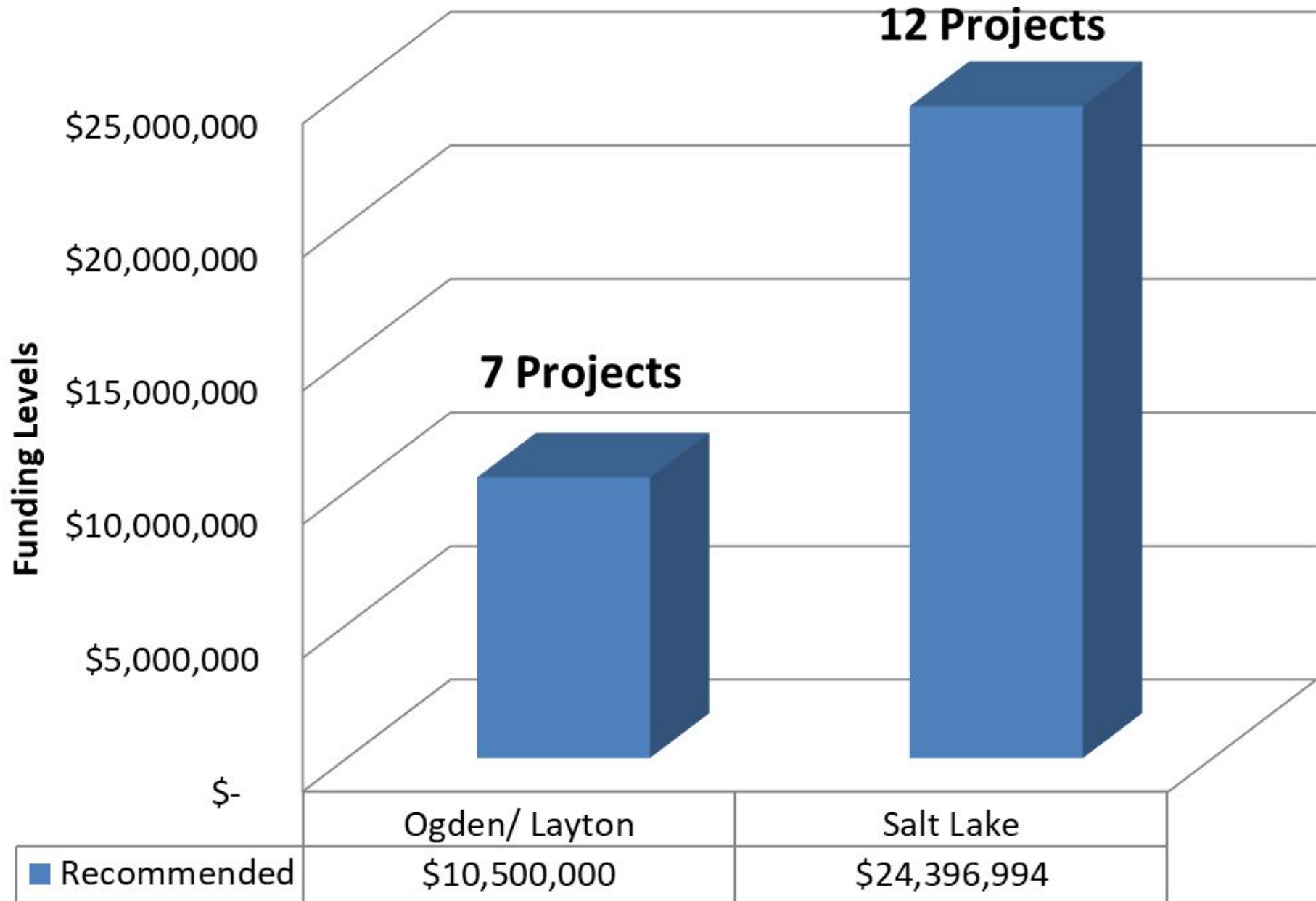
West Jordan 1: 1300 West, 6500 South to 7800 South (Phase 3)	Riverton 6: Construction of Electric Vehicle Charging Stations next to Riverton City Hall	Sandy 15: 11400 S 1300 E Intersection Improvements 16: 11000 South 1000 East Roundabout	Funding Categories ○ CMAQ ○ CMAQ/CRP ● CMAQ/CRP/STP
--	---	--	---

Salt Lake/ West Valley Urban Area



	STP	CMAQ	TAP	CRP
Requested	\$139,782,283	\$36,458,020	\$17,383,034	\$15,320,327
Available	\$24,400,000	\$7,000,000	\$2,600,000	\$2,500,000

Surface Transportation Program (STP) Funds



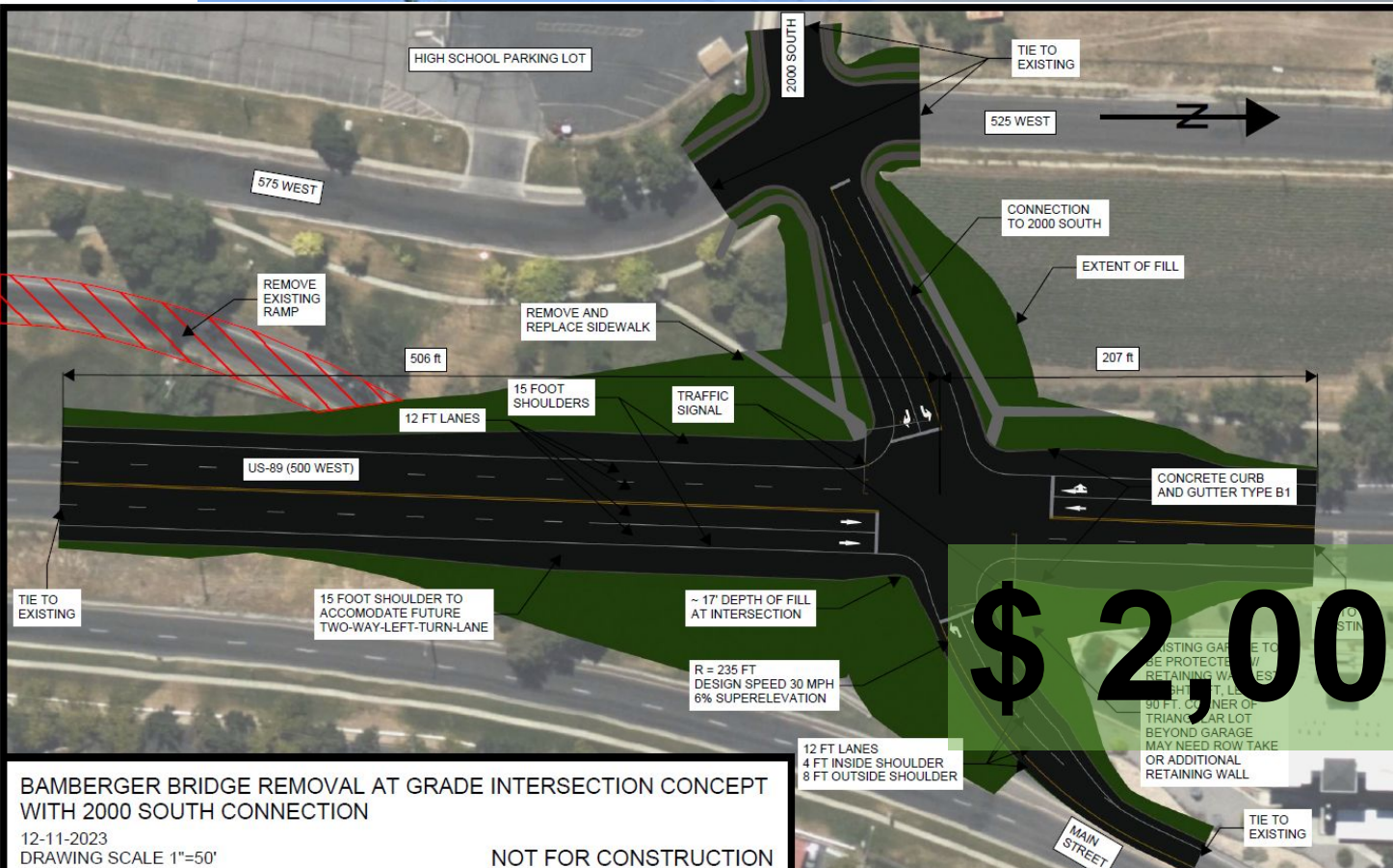
Summary of the Recommended Projects for the Surface Transportation Program (STP)			
Sponsor	Project Information		Funding Recommended
	Location/ Limits	Concept/ Type of Improvements	
Ogden \ Layton Urbanized Area			
South Ogden City	40th Str; Riverdale Road to Washington Blvd.	Phase 2 between Riverdale Road and Washington Blvd. The project includes sidewalks, curb/gutter, driveway approaches and modifications to business accesses for improved safety.	\$ 2,000,000
Bountiful City	Parkin Ovepass Replacement; 500 West & US-89 (Main Street)	This project will replace UDOT's 1930's vintage railway structure with a new at-grade, signalized intersection while maintaining a critical link to access I-15 and the commercial centers in Bountiful, Woods Cross and North Salt Lake.	\$ 2,000,000
Clinton City	1300 North and 1500 West Improvements	This project will widen 1300 North from 1285 W to 1500 W, and 1500 West from 1230 N to 1750 N. The project will add pavement, curb and gutter, and sidewalk along various sections of the corridor.	\$ 1,000,000
Farmington City	SR - 106 (Main Street); Park Lane to Shepard Lane	Project will improve drainage and add pedestrian facilities including storm drain, curb and gutter, sidewalk and pavement widening to allow for standard shoulder width.	\$ 1,500,000
West Point City	700 South; 4000 West to 4500 West	Project will widen the narrow two lane section to a 3 lane section including shoulder, curb, gutter, and sidewalk on both sides.	\$ 1,500,000
North Salt Lake	Main Street; 350 North to Pacific Avenue	Project will reconstruct remaining section of Main Street including improvements to shoulder, curb, gutter, and sidewalk.	\$ 1,000,000
Harrisville City Corporation	750 West; West Harrisville Road to US-89 (via 1750 North)	Project will widen the narrow 2-lane roadway to a 3-lanefacility and reconstruct 750 West including center turn lane, shoulder, curb, gutter, and sidewalk.	\$ 1,500,000
		Programming Total	\$ 10,500,000

Salt Lake Urbanized Area			
Agency	Name of Project	Project Description -	Recommended Amount
Salt Lake City	1300 East; 2100 South to Southern City Boundary	This project will reconstruct the pavement, curb and gutter, and pedestrian improvements. This project will evaluate incorporation of Complete Streets concepts and pedestrian safety improvements.	\$ 3,500,000
Millcreek	2000 E: 3300 S to E Atkin Ave	This project will create a safer environment for all users including the reconstruction of disfunctioning curb & gutter, sidewalk, ADA ramps, enhanced bus stops, storm drain, and piping an existing irrigation ditch below grade.	\$ 1,500,000
Murray City	5600 South; 900 East to 1300 East	The project will create a uniform corridor with new pavement, curb and gutter, bike lanes, sidewalk, and storm drain.	\$ 2,500,000
West Valley City	3900 South; Redwood Road to Jordaan River Bridge	This project will reconstruct the pavement section, adding buffered bike lanes, a 10' trail, street lighting and connecting sidewalk.	\$ 2,000,000
Riverton City	1300 West ; 13100 South to 13700 South	Project will reconstruct with minor widening to include a consistent cross section with center turn lane, shoulders, bike lanes, park strip, sidewalks, storm drain, curb and gutters. The existing canal turnout will be piped and the overhead power lines may be moved to allow full utilization of the Right-of-Way.	\$ 1,400,000
Magna	2700 S & 8000 W Intersection Realignment	This project will realign an offset intersection to improve safety, function and connectivity at this location (2700 S / 2820 S & 8000 W).	\$ 2,216,194
West Valley City/ Taylorsville	7200 West; 4100 South to 3900 South	This project will reconstruct with minor widening to improve safety, add bike lanes, and complete curb, gutter and sidewalk through this corridor.	\$ 2,000,000
Herriman City	6400 West; Herriman Blvd (12600 South) to Midas Creek (12100 South)	This project will construct the final 0.5 miles of 6400 West and close the last remaining gap between Herriman and South Jordan along 6400 west, and provide an additional crossing of Midas Creek.	\$ 2,700,000
Magna	8000 West; 2502 South to 3100 South	This project will reconstruct with minor widening to create a uniform cross section and complete the curb, gutter, and sidewalk through the corridor.	\$ 1,500,000
Draper City	Pioneer Road; 1650 East to Highland Drive	The project will reconstruct and widen this section of road to include 2 travel lanes, paved shoulders, curb and gutter, park strips, and sidewalks. The project will also construct a significant amount of retaining walls to accommodate the improvements.	\$ 3,000,000
Utah Transit Authority (UTA)	TechLink TRAX Design; Salt Lake International Airport to UofU Research Park	Improve TRAX operations & capacity, enhance access & mobility, increase opportunities for disadvantaged populations, supports the long range transportation growth demand, and provide sustainable transportation options that minimize impacts to environment.	\$ 2,000,000
SL County/ Sandy Area	1300 East and Galaxie Drive Intersection	Project will extend the median on 1300 East to restrict the westbound left turn maneuver while continuing to accommodate the southbound left turn	\$ 80,800
Programming Total			\$ 24,396,994

Bountiful – Parkin Overpass Replacement – Reconstruct & Alignment Change

Project Type – Reconstruction

200 West and 500 West (US-89)



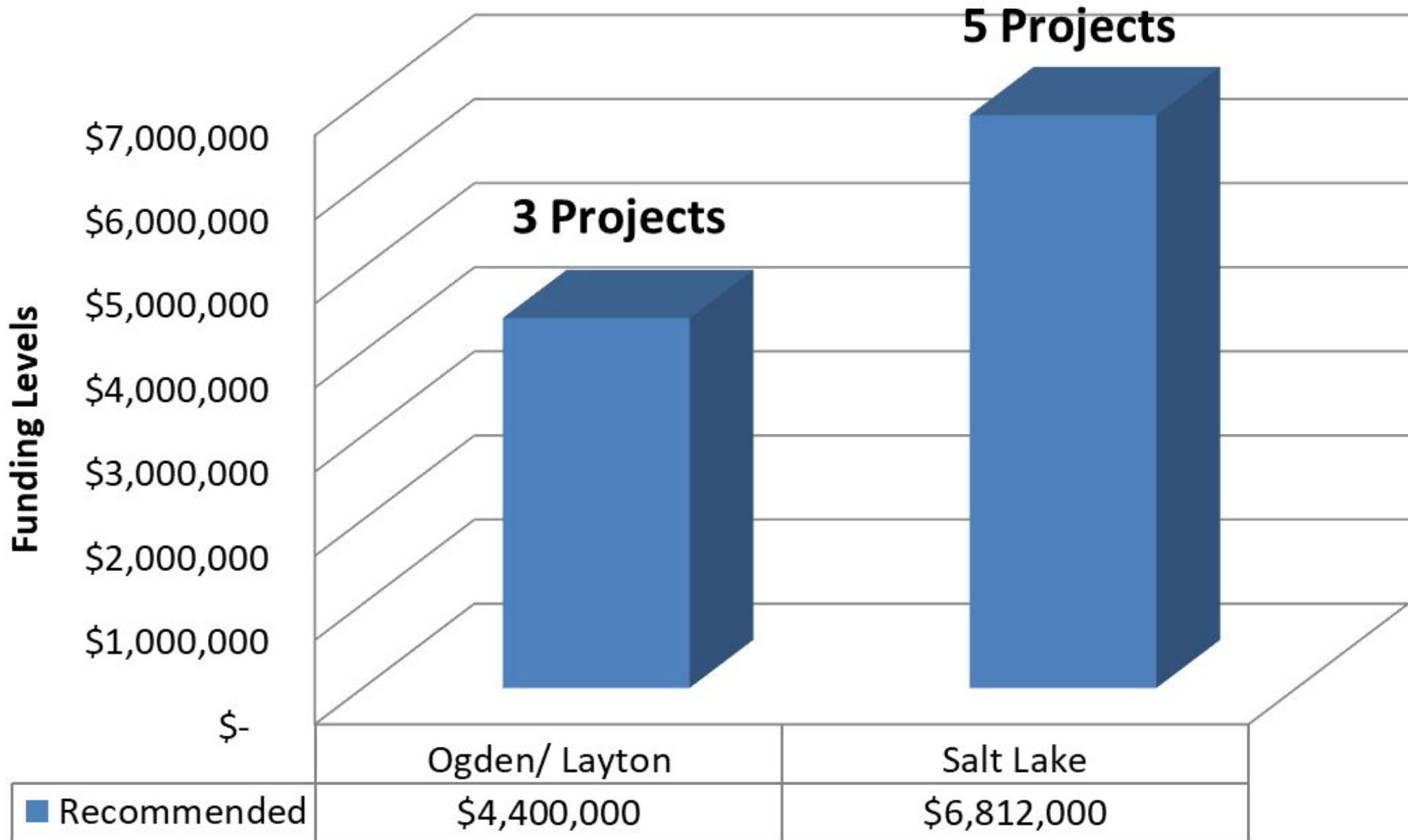
\$ 2,000,000

This project will replace UDOT's 1930's vintage railway structure which was converted to accommodate vehicle use. The existing structure has reached the end of its service life. A new at-grade, signalized intersection is proposed which could provide additional access to Woods Cross High School while maintaining a critical link to access I-15 and the commercial centers in Bountiful, Woods Cross and North Salt Lake. This project is supported by Bountiful, Woods Cross and North Salt Lake Cities.

Project Cost –
\$ 8,081,000

Funds Request –
\$ 3,581,000

Congestion Mitigation/ Air Quality (CMAQ) Funds



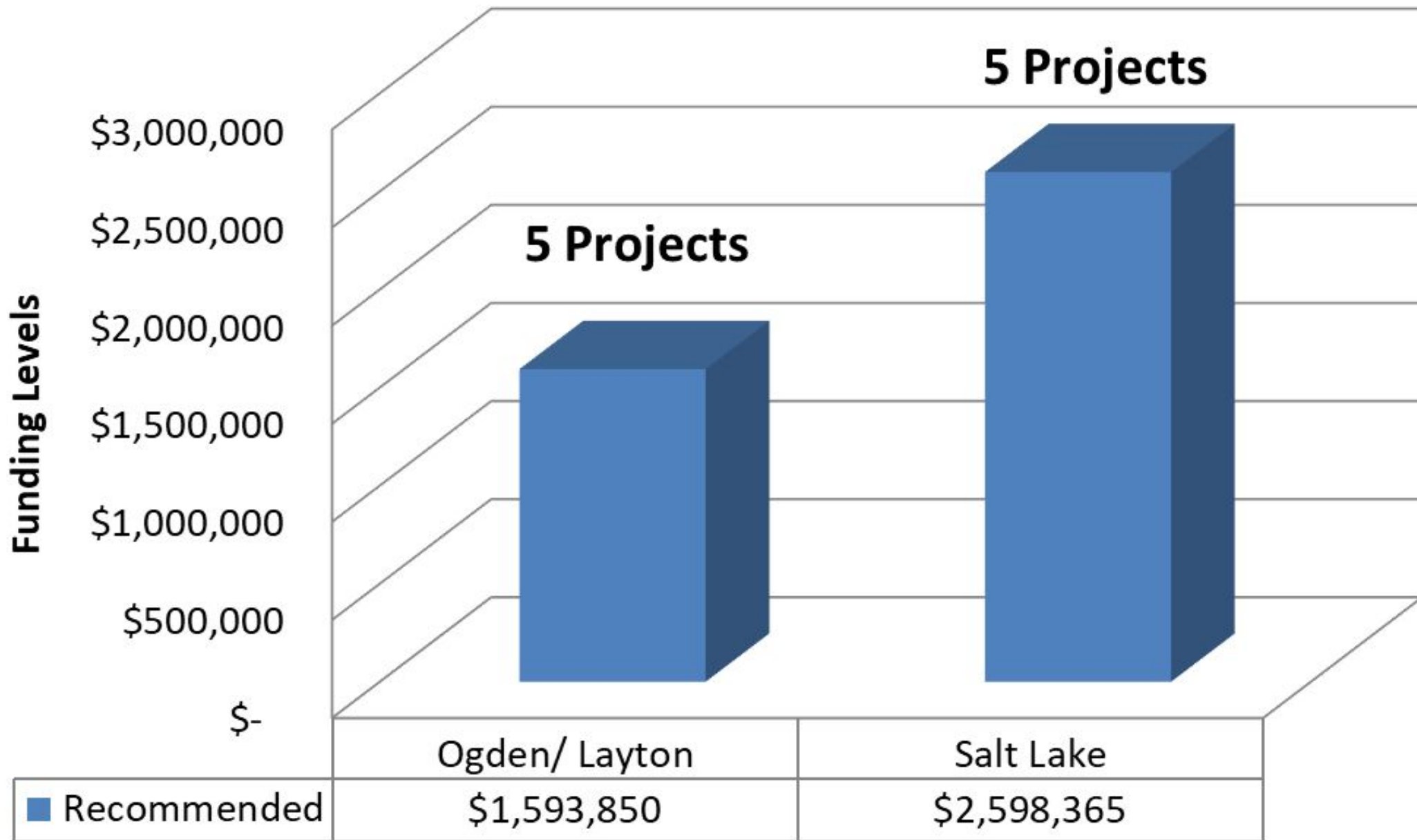
Summary of the Recommended Projects for the Congestion Mitigation/ Air Quality (CMAQ) Program			
Agency	Name of Project	Project Description -	Recommended Funding
Ogden/ Layton Urban Area			
Ogden City	Ogden City Greenbike Share Expansion	The project will increase the amount of e-bikes and add more stations near popular destinations and high density residency locations	\$ 400,000
Clinton City	2050 North Pedestrian Underpass	The project will construct a pedestrian underpass or overpass to eliminate at grade crossing and facilitate active transportation crossings of the 2000 West (SR-108) roadway.	\$ 2,000,000
Utah Transit Authority (UTA)	Davis-SLC Community Connector	The Davis-Salt Lake City Community Connector is a proposed corridor-based bus rapid transit (BRT) system between Farmington City and SLC, Utah. The alignment extends from the FrontRunner Farmington station at the northern terminus, south to downtown SLC, and eastward into the University of Utah and Research Park.	\$ 2,000,000
			\$ 4,400,000
Salt Lake Urban Area			
South Jordan City	Jordan River Trail Connector; Jordan River Trail to 500 West (Ultradent Dr)	Project will construct new trail and bridge to allow pedestrians to access the South Jordan Frontrunner Station using the Jordan River Trail. This new trail connection will separate the pedestrians from the existing highways and provide a safer route for them to access the Frontrunner Station.	\$ 1,450,000
UDOT	12300 South; SB I-15 Offramp to Lone Peak Parkway	This project will widen 12300 S to allow for an additional left turn lane to southbound Lone Peak Parkway. This project will also widen the north side of SR-71 to extend the free-right acceptance lane from the I-15 SB off-ramp to Lone Peak Parkway.	\$ 1,500,000
Utah Transit Authority	Davis-SLC Community Connector - Southern Davis County to Northern Salt Lake City	The Davis-Salt Lake City Community Connector is a proposed corridor-based bus rapid transit (BRT) system between Farmington City and SLC, Utah. The alignment extends from the FrontRunner Farmington station at the northern terminus, south to downtown SLC, and eastward into the University of Utah and Research Park.	\$ 1,000,000
Salt Lake City	Sunnyside Ave at Crestview Drive Roundabout	Salt Lake City will convert an existing 2-way stop intersection to a roundabout to calm traffic and reduce traffic delays, mobile source emissions, and air pollution.	\$ 762,000
Sandy City	11000 South 1000 East Roundabout	This pedestrian heavy intersection is adjacent to Alta High School, operating as a busy 4-way stop intersection. While a traffic signal is not warranted, this is a prime location for a roundabout to reduce delay, emissions, and conflict points.	\$ 2,100,000
			\$ 6,812,000

- The Sunnyside Avenue Roundabout is mentioned in the East Bench Masterplan as a City Entryway Feature.
- Congestion reduced, air quality improved.
- The roundabout will reduce speeds from greater than 40 MPH with a lane reduction.
- The roundabout will improve safety for pedestrians and provide a connection for existing bike trails.
- It provides a UTA bus turnaround.



\$ 762,000

Transportation Alternatives Program (TAP) Funds



Summary of the Recommended Projects for the Transportation Alternatives Program (TAP)

		Project Information	Funding Recommended
Sponsor	Location/ Limits	Concept/ Type of Improvements	
Ogden \ Layton Urbanized Area			
Centerville City	Porter Lane Multi-use Trail; 400 West to Main Street (SR-105)	The project will construct a Multi-Use Trail that will connect the "last mile" from Centerville City's Main Street District to the West Side of I-15. Creating a safe off the road facility for students, commuters, residents, and those seeking to access local trails and recreational hot spots.	\$ 178,850
Layton City Corporation	Kay's Creek Trail: Main Street to Hawthorne Drive	The project is to continue the trail alignment connecting safe-routes-to-school, serve as a commuter route, a recreational outlet, and access to downtown shopping for all users.	\$ 450,000
City of North Salt Lake	Center Street sidewalk (Orchard to 340 East)	The project will construct missing sidewalk for school children to get to the crosswalk at Center St and Orchard Dr. The sidewalk will also provide a direct connection to the City's developing Town Center and Hatch Park.	\$ 265,000
North Ogden City	North Ogden Canal Trail Crossing Improvements	This project will construct 2 or more of the four crossing enhancements for the safety and comfort for trail users when crossing the roadways of 3100 N., 1050 E., 2750 N., and Mountain Road.	\$ 300,000
Hooper City	Hooper Slough Trail Connection	This project will be to conect two disjointed porions of the Hooper Slough Trail and to improve the street crossings for better trail network. (Segment A: 5156 S 5725 W to 5100 S 5500 W and Segment B: 5230 W 4825 S to 5200 W 4600 S	\$ 400,000
			\$ 1,593,850

Summary of the Recommended Projects for the Transportation Alternatives Program (TAP)

Project Information			Funding Recommended
Sponsor	Location/ Limits	Concept/ Type of Improvements	
Salt Lake Urbanized Area			
West Valley City	1300 West Bike Lanes; 4000 South to 3300 South	This proposed project improves 1300 West between 4000 South and 3300 South by improving the pavement section, adding buffered bike lanes, street lighting and connecting sidewalk.	\$ 745,000
GSLMSD- White City Metro Township	Larkspur Drive; 700 East to Carnation Drive	Improving pedestrian safety including two raised crossing with bulb outs, driver feedback signs, storm drains, and pedestrian ramps along Larkspur Drive.	\$ 277,288
Millcreek	3776 S 2700 E Crosswalk Enhancement Project	This project will create a safer environment for all users including the reconstruction of disfunctioning curb & gutter, sidewalk, crosswalk, rehabilitation of a neighborhood trail into an ADA accessible route leading to a local elementary school, and ADA ramps.	\$ 376,267
City of Holladay	2700 East Pedestrian Improvements; Morningside Drive to 4500 South	Project will construct missing sidewalk used to access schools, transit, and recreation. This project is Phase 2 of a 3-phase 2700 E project to fill-in sidewalk on the east and west sides plus enhance safe crossings.	\$ 740,000
Salt Lake City	Bike Share (GREENbike) Capital Care Improvements	GREENbike, launched in 2013, has 23 stations in Salt Lake City at the end of their lifespan; parts are no longer available for repairs. This project is a capital replacement of three stations, each with 12 docks, and a total of 36 eBikes. GREENbike will continue to serve the public with sustainable travel.	\$ 459,810
			\$ 2,598,365

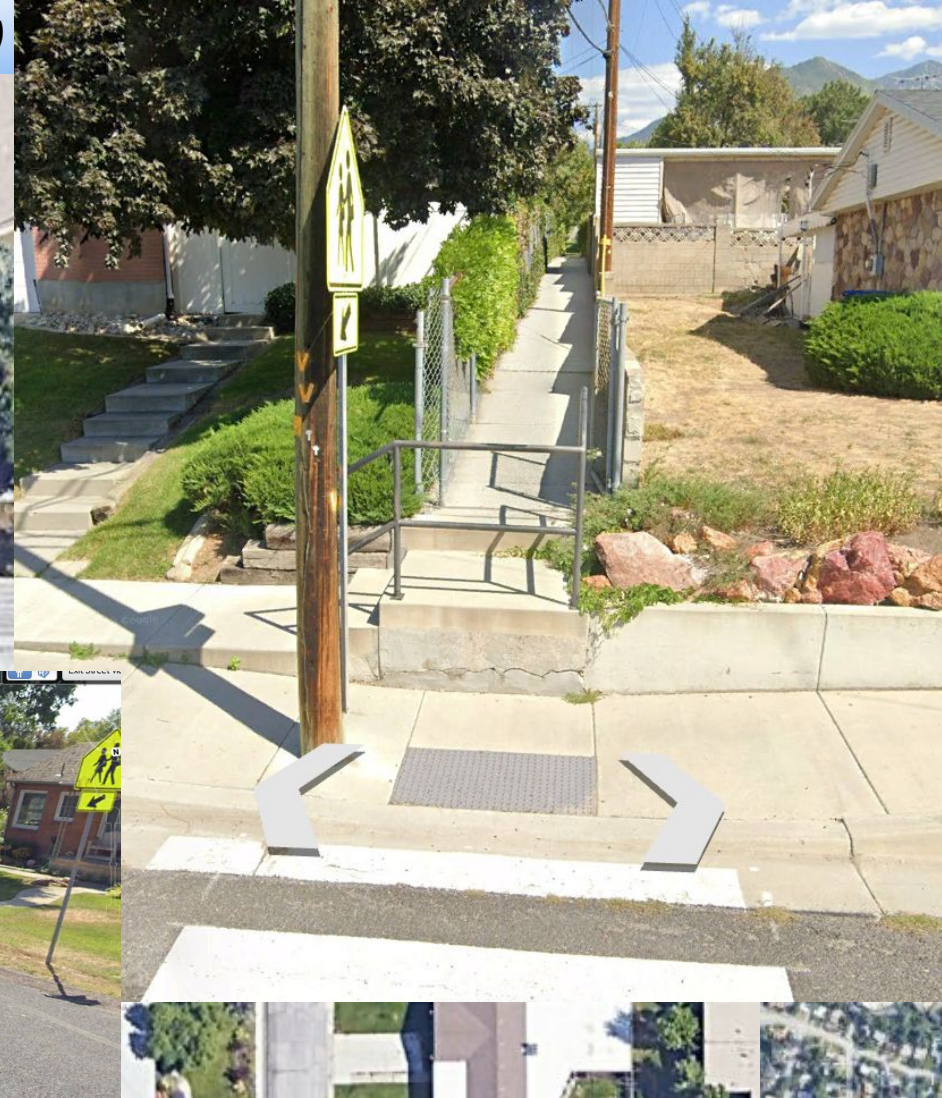
Millcreek – 3776 So/ 2700 E Crosswalk – Bike\ Ped Facility

Project Type – Capital Improvement

3776 South 2700 East – (0.03 miles)



\$ 376,276

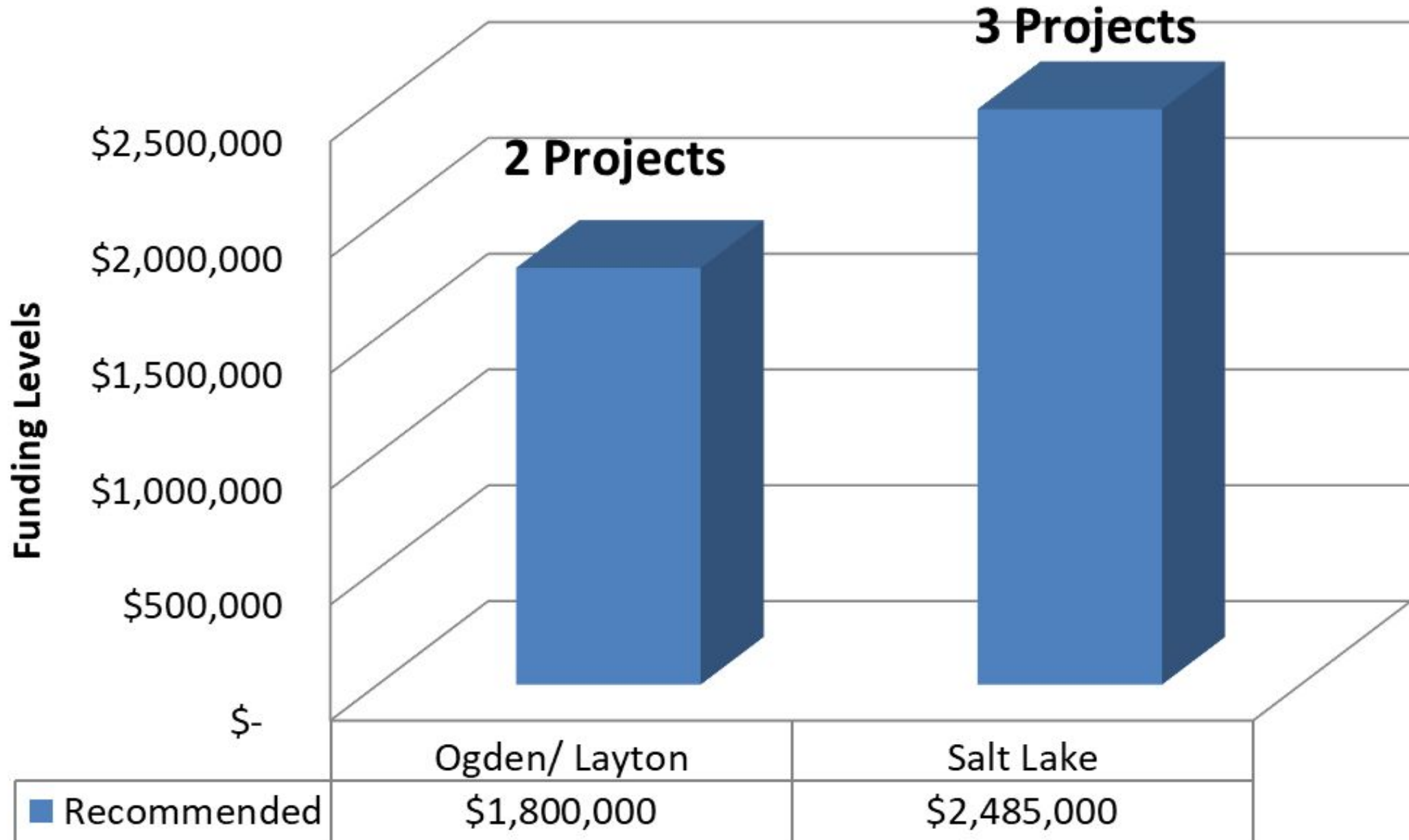


Project Cost –
\$ 403,600

Funds Request
– \$

This project will create a safer environment for all users including the reconstruction of disfunctioning curb & gutter, sidewalk, crosswalk, rehabilitation of a neighborhood trail into an ADA accessible route leading to a local elementary school, and ADA ramps.

Carbon Reduction Program (CRP) Funds



Summary of the Recommended Projects for the Carbon Reduction Program (CRP)

Sponsor	Project Information		Funding Recommended
	Location/ Limits	Concept/ Type of Improvements	
Ogden/ Layton Urban Area			
Farr West City	1200 West Harrisville Road Roundabout	The proposed project would construct a roundabout to replace the 4-way stop at this location and would include any required utility relocations, property acquisition, and driveway access connections.	\$ 900,000
Roy City Corporation	4300 West 6000 South Roundabout	The project includes the construction of a roundabout including property acquisition, roadway improvements, sidewalk, bicycle facilities, drainage, and lighting improvements.	\$ 900,000
			\$ 1,800,000
Salt Lake Urban Area			
UDOT	12300 South; SB I-15 Offramp to Lone Peak Parkway	This project will widen 12300 S to allow for an additional left turn lane to southbound Lone Peak Parkway. This project will also widen the north side of SR-71 to extend the free-right acceptance lane from the I-15 SB off-ramp to Lone Peak Parkway.	\$ 1,000,000
Riverton City	Construction of Electric Vehicle Charging Stations next to Riverton City Hall	This project will construct four electric car charging stations in the parking area adjacent to Riverton City Hall which is shared with the Riverton Library, Riverton Senior Center, Riverton Community Center, a newly constructed amphitheatre, and a park. All these facility users will have access to the charging stations.	\$ 385,000
Sandy City Public Works	11000 South 1000 East Roundabout	This pedestrian heavy intersection is adjacent to Alta High School, operating as a busy 4-way stop intersection. While a traffic signal is not warranted, this is a prime location for a roundabout to reduce delay, emissions, and conflict points.	\$ 1,100,000
			\$ 2,485,000

3

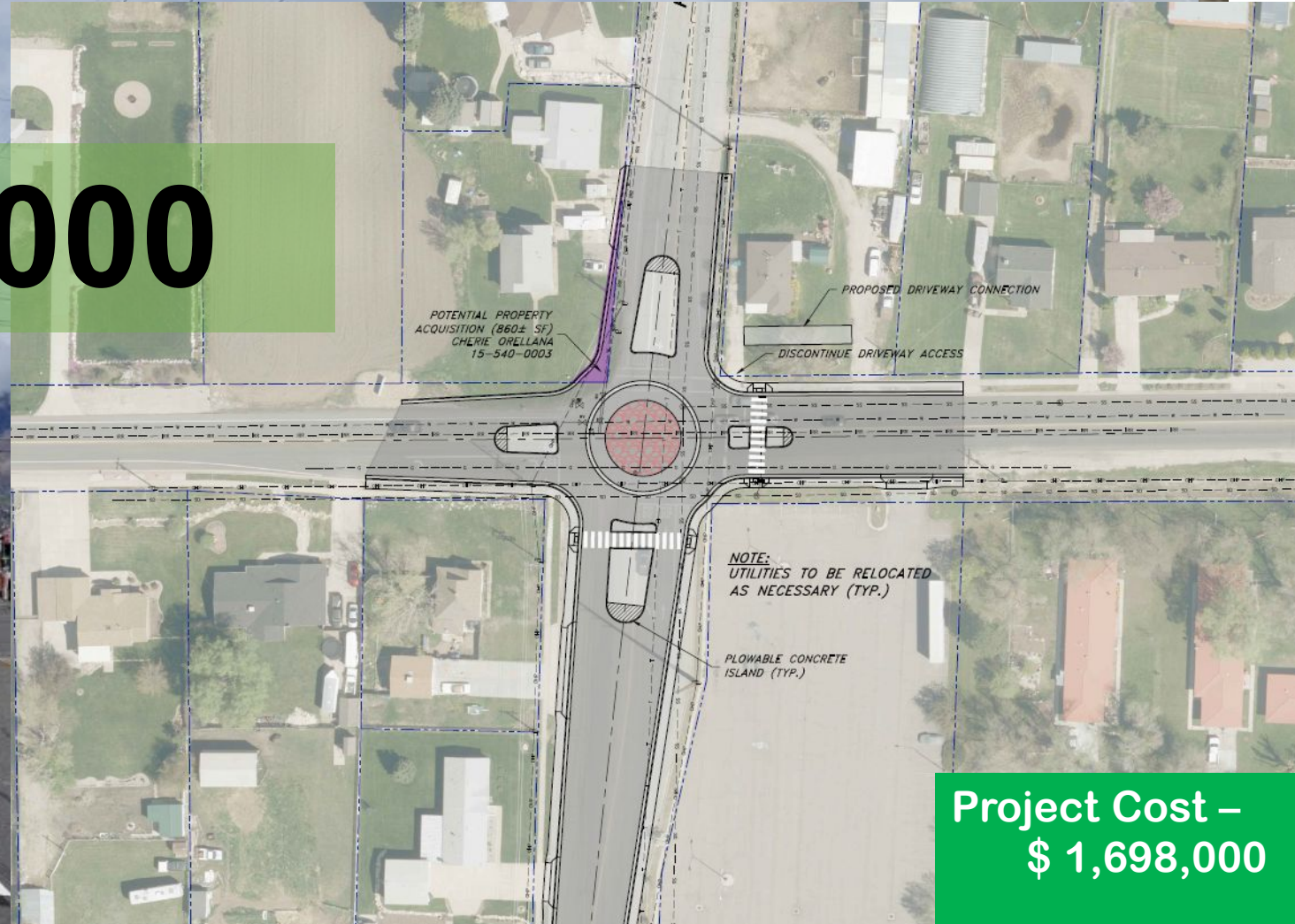
3

Farr West – 1200 West/ Harrisville Road – Round-about

Project Type – Intersections & Signals

1200 West & Harrisville Road

\$ 900,000



**Project Cost –
\$ 1,698,000**

**Funds Request –
\$ 1,583,000**

The proposed project would construct a roundabout to replace the 4-way stop at this location and would include any required utility relocations, property acquisition, and driveway access connections.

Summary of the Recommended Projects for the Surface Transportation Program (STP)

Summary of the Recommended Projects for the Surface Transportation Program (STP)			
	Project Information		Funding Recommended
Sponsor	Location/ Limits	Concept/ Type of Improvements	
Ogden \ Layton Urbanized Area			
South Ogden City	40th Str; Riverdale Road to Washington Blvd.	Phase 2 between Riverdale Road and Washington Blvd. The project includes sidewalks, curb/gutter, driveway approaches and modifications to business accesses for improved safety.	\$ 2,000,000
Bountiful City	Parkin Overpass Replacement; 500 West & US-89 (Main Street)	This project will replace UDOT's 1930's vintage railway structure with a new at-grade, signalized intersection while maintaining a critical link to access I-15 and the commercial centers in Bountiful, Woods Cross and North Salt Lake.	\$ 2,000,000
Clinton City	1300 North and 1500 West Improvements	This project will widen 1300 North from 1285 W to 1500 W, and 1500 West from 1230 N to 1750 N. The project will add pavement, curb and gutter, and sidewalk along various sections of the corridor.	\$ 1,000,000
Farmington City	SR - 106 (Main Street); Park Lane to Shepard Lane	Project will improve drainage and add pedestrian facilities including storm drain, curb and gutter, sidewalk and pavement widening to allow for standard shoulder width.	\$ 1,500,000
West Point City	700 South; 4000 West to 4500 West	Project will widen the narrow two lane section to a 3 lane section including shoulder, curb, gutter, and sidewalk on both sides.	\$ 1,500,000
North Salt Lake	Main Street; 350 North to Pacific Avenue	Project will reconstruct remaining section of Main Street including improvements to shoulder, curb, gutter, and sidewalk.	\$ 1,000,000
Harrisville City Corporation	750 West; West Harrisville Road to US-89 (via 1750 North)	Project will widen the narrow 2-lane roadway to a 3-lanefacility and reconstruct 750 West including center turn lane, shoulder, curb, gutter, and sidewalk.	\$ 1,500,000
		Programming Total	\$ 10,500,000

Salt Lake Urbanized Area			
Agency	Name of Project	Project Description -	Recommended Amount
Salt Lake City	1300 East; 2100 South to Southern City Boundary	This project will reconstruct the pavement, curb and gutter, and pedestrian improvements. This project will evaluate incorporation of Complete Streets concepts and pedestrian safety improvements.	\$ 3,500,000
Millcreek	2000 E: 3300 S to E Atkin Ave	This project will create a safer environment for all users including the reconstruction of disfunctioning curb & gutter, sidewalk, ADA ramps, enhanced bus stops, storm drain, and piping an existing irrigation ditch below grade.	\$ 1,500,000
Murray City	5600 South; 900 East to 1300 East	The project will create a uniform corridor with new pavement, curb and gutter, bike lanes, sidewalk, and storm drain.	\$ 2,500,000
West Valley City	3900 South; Redwood Road to Jordan River Bridge	This project will reconstruct the pavement section, adding buffered bike lanes, a 10' trail, street lighting and connecting sidewalk.	\$ 2,000,000
Riverton City	1300 West ; 13100 South to 13700 South	Project will reconstruct with minor widening to include a consistent cross section with center turn lane, shoulders, bike lanes, park strip, sidewalks, storm drain, curb and gutters. The existing canal turnout will be piped and the overhead power lines may be moved to allow full utilization of the Right-of-Way.	\$ 1,400,000
Magna	2700 S & 8000 W Intersection Realignment	This project will realign an offset intersection to improve safety, function and connectivity at this location (2700 S / 2820 S & 8000 W).	\$ 2,216,194
West Valley City/ Magna	7200 West; 4100 South to 3900 South	This project will reconstruct with minor widening to improve safety, add bike lanes, and complete curb, gutter and sidewalk through this corridor.	\$ 2,000,000
Herriman City	6400 West; Herriman Blvd (12600 South) to Midas Creek (12100 South)	This project will construct the final 0.5 miles of 6400 West and close the last remaining gap between Herriman and South Jordan along 6400 west, and provide an additional crossing of Midas Creek.	\$ 2,700,000
Magna	8000 West; 2502 South to 3100 South	This project will reconstruct with minor widening to create a uniform cross section and complete the curb, gutter, and sidewalk through the corridor.	\$ 1,500,000
Draper City	Pioneer Road; 1650 East to Highland Drive	The project will reconstruct and widen this section of road to include 2 travel lanes, paved shoulders, curb and gutter, park strips, and sidewalks. The project will also construct a significant amount of retaining walls to accommodate the improvements.	\$ 3,000,000
Utah Transit Authority (UTA)	TechLink TRAX Design; Salt Lake International Airport to UofU Research Park	Improve TRAX operations & capacity, enhance access & mobility, increase opportunities for disadvantaged populations, supports the long range transportation growth demand, and provide sustainable transportation options that minimize impacts to environment.	\$ 2,000,000
SL County/ Sandy Area	1300 East and Galaxie Drive Intersection	Project will extend the median on 1300 East to restrict the westbound left turn maneuver while continuing to accommodate the southbound left turn	\$ 80,800
Programming Total			\$ 24,396,994

Summary of the Recommended Projects for the Congestion Mitigation/ Air Quality (CMAQ) Program

Agency	Name of Project	Project Description -	Recommended Funding
Ogden/ Layton Urban Area			
Ogden City	Ogden City Greenbike Share Expansion	The project will increase the amount of e-bikes and add more stations near popular destinations and high density residency locations	\$ 400,000
Clinton City	2050 North Pedestrian Underpass	The project will construct a pedestrian underpass or overpass to eliminate at grade crossing and facilitate active transportation crossings of the 2000 West (SR-108) roadway.	\$ 2,000,000
Utah Transit Authority (UTA)	Davis-SLC Community Connector	The Davis-Salt Lake City Community Connector is a proposed corridor-based bus rapid transit (BRT) system between Farmington City and SLC, Utah. The alignment extends from the FrontRunner Farmington station at the northern terminus, south to downtown SLC, and eastward into the University of Utah and Research Park.	\$ 2,000,000
			\$ 4,400,000
Salt Lake Urban Area			
South Jordan City	Jordan River Trail Connector; Jordan River Trail to 500 West (Ultradent Dr)	Project will construct new trail and bridge to allow pedestrians to access the South Jordan Frontrunner Station using the Jordan River Trail. This new trail connection will separate the pedestrians from the existing highways and provide a safer route for them to access the Frontrunner Station.	\$ 1,450,000
UDOT	12300 South; SB I-15 Offramp to Lone Peak Parkway	This project will widen 12300 S to allow for an additional left turn lane to southbound Lone Peak Parkway. This project will also widen the north side of SR-71 to extend the free-right acceptance lane from the I-15 SB off-ramp to Lone Peak Parkway.	\$ 1,500,000
Utah Transit Authority	Davis-SLC Community Connector - Southern Davis County to Northern Salt Lake City	The Davis-Salt Lake City Community Connector is a proposed corridor-based bus rapid transit (BRT) system between Farmington City and SLC, Utah. The alignment extends from the FrontRunner Farmington station at the northern terminus, south to downtown SLC, and eastward into the University of Utah and Research Park.	\$ 1,000,000
Salt Lake City	Sunnyside Ave at Crestview Drive Roundabout	Salt Lake City will convert an existing 2-way stop intersection to a roundabout to calm traffic and reduce traffic delays, mobile source emissions, and air pollution.	\$ 762,000
Sandy City	11000 South 1000 East Roundabout	This pedestrian heavy intersection is adjacent to Alta High School, operating as a busy 4-way stop intersection. While a traffic signal is not warranted, this is a prime location for a roundabout to reduce delay, emissions, and conflict points.	\$ 2,100,000
			\$ 6,812,000

Summary of the Recommended Projects for the Carbon Reduction Program (CRP)

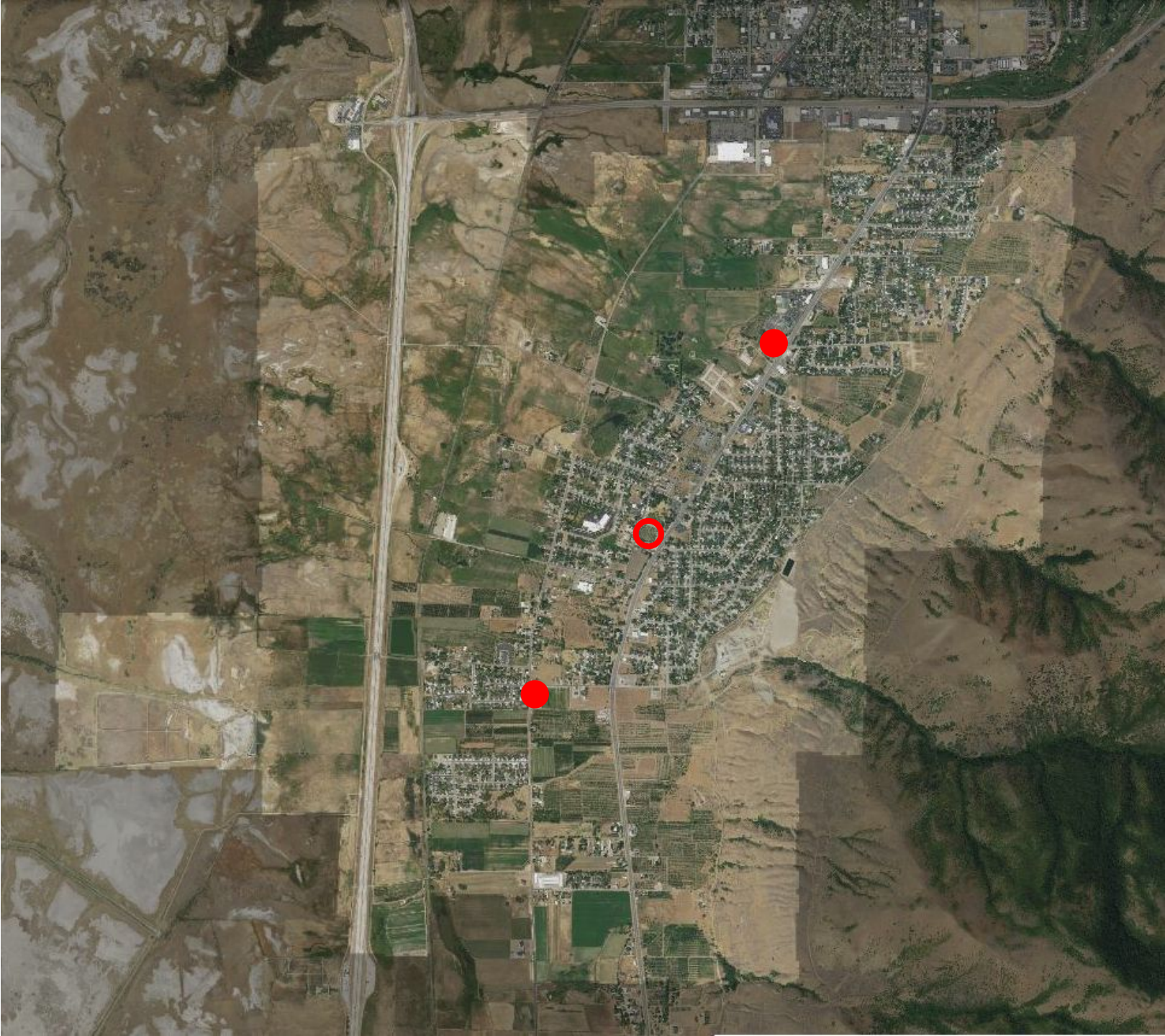
Sponsor	Project Information		Funding Recommended
	Location/ Limits	Concept/ Type of Improvements	
Ogden/ Layton Urban Area			
Farr West City	1200 West Harrisville Road Roundabout	The proposed project would construct a roundabout to replace the 4-way stop at this location and would include any required utility relocations, property acquisition, and driveway access connections.	\$ 900,000
Roy City Corporation	4300 West 6000 South Roundabout	The project includes the construction of a roundabout including property acquisition, roadway improvements, sidewalk, bicycle facilities, drainage, and lighting improvements.	\$ 900,000
			\$ 1,800,000
Salt Lake Urban Area			
UDOT	12300 South; SB I-15 Offramp to Lone Peak Parkway	This project will widen 12300 S to allow for an additional left turn lane to southbound Lone Peak Parkway. This project will also widen the north side of SR-71 to extend the free-right acceptance lane from the I-15 SB off-ramp to Lone Peak Parkway.	\$ 1,000,000
Riverton City	Construction of Electric Vehicle Charging Stations next to Riverton City Hall	This project will construct four electric car charging stations in the parking area adjacent to Riverton City Hall which is shared with the Riverton Library, Riverton Senior Center, Riverton Community Center, a newly constructed amphitheatre, and a park. All these facility users will have access to the charging stations.	\$ 385,000
Sandy City Public Works	11000 South 1000 East Roundabout	This pedestrian heavy intersection is adjacent to Alta High School, operating as a busy 4-way stop intersection. While a traffic signal is not warranted, this is a prime location for a roundabout to reduce delay, emissions, and conflict points.	\$ 1,100,000
			\$ 2,485,000

Summary of the Recommended Projects for the Transportation Alternatives Program (TAP)			
	Project Information		Funding Recommended
Sponsor	Location/ Limits	Concept/ Type of Improvements	
Ogden \ Layton Urbanized Area			
Centerville City	Porter Lane Multi-use Trail; 400 West to Main Street (SR-105)	The project will construct a Multi-Use Trail that will connect the "last mile" from Centerville City's Main Street District to the West Side of I-15. Creating a safe off the road facility for students, commuters, residents, and those seeking to access local trails and recreational hot spots.	\$ 178,850
Layton City Corporation	Kay's Creek Trail: Main Street to Hawthorne Drive	The project is to continue the trail alignment connecting safe-routes-to-school, serve as a commuter route, a recreational outlet, and access to downtown shopping for all users.	\$ 450,000
City of North Salt Lake	Center Street sidewalk (Orchard to 340 East)	The project will construct missing sidewalk for school children to get to the crosswalk at Center St and Orchard Dr. The sidewalk will also provide a direct connection to the City's developing Town Center and Hatch Park.	\$ 265,000
North Ogden City	North Ogden Canal Trail Crossing Improvements	This project will construct 2 or more of the four crossing enhancements for the safety and comfort for trail users when crossing the roadways of 3100 N., 1050 E., 2750 N., and Mountain Road.	\$ 300,000
Hooper City	Hooper Slough Trail Connection	This project will be to conect two disjointed porions of the Hooper Slough Trail and to improve the street crossings for better trail network. (Segment A: 5156 S 5725 W to 5100 S 5500 W and Segment B: 5230 W 4825 S to 5200 W 4600 S	\$ 400,000
			\$ 1,593,850

Summary of the Recommended Projects for the Transportation Alternatives Program (TAP)			
Project Information			Funding Recommended
Sponsor	Location/ Limits	Concept/ Type of Improvements	
Salt Lake Urbanized Area			
West Valley City	1300 West Bike Lanes; 4000 South to 3300 South	This proposed project improves 1300 West between 4000 South and 3300 South by improving the pavement section, adding buffered bike lanes, street lighting and connecting sidewalk.	\$ 745,000
GSLMSD- White City Metro Township	Larkspur Drive; 700 East to Carnation Drive	Improving pedestrian safety including two raised crossing with bulb outs, driver feedback signs, storm drains, and pedestrian ramps along Larkspur Drive.	\$ 277,288
Millcreek	3776 S 2700 E Crosswalk Enhancement Project	This project will create a safer environment for all users including the reconstruction of disfunctioning curb & gutter, sidewalk, crosswalk, rehabilitation of a neighborhood trail into an ADA accessible route leading to a local elementary school, and ADA ramps.	\$ 376,267
City of Holladay	2700 East Pedestrian Improvements; Morningside Drive to 4500 South	Project will construct missing sidewalk used to access schools, transit, and recreation. This project is Phase 2 of a 3-phase 2700 E project to fill-in sidewalk on the east and west sides plus enhance safe crossings.	\$ 740,000
Salt Lake City	Bike Share (GREENbike) Capital Care Improvements	GREENbike, launched in 2013, has 23 stations in Salt Lake City at the end of their lifespan; parts are no longer available for repairs. This project is a capital replacement of three stations, each with 12 docks, and a total of 36 eBikes. GREENbike will continue to serve the public with sustainable travel.	\$ 459,810
			\$ 2,598,365









PERRY CITY HALL AT THE LODGE

~ TIMELINE ~



Construction – 2000

- Developed by Marlow Goble
- Amish builders framed the structure using logs from the causeway to Antelope Island



2000-2019

- Main level used for medical and professional office space
- The Lodge event space operated and managed by Maddox



2017-2020

- Perry City investigates options for a new city hall
- Architect estimates \$9 million to construct a new building in 2020 (not including the cost of land or inflation)



2020-2022

- The Lodge is listed for sale
- Property remains vacant except for a small portion of leased office space



2022

- Perry City purchases the Lodge
- Jones and Associates drafts remodel plans



2023

- Perry City remodels the Lodge
- Building will house Administration, Police, Event Center, and Professional Office Space

CITY HALL AT THE LODGE WHY?

~ CONSIDERATIONS ~

- Accommodate growth in staff
- Financial savings
 - Savings of approximately 50% compared to building new
 - Opportunity to subsidize the building with rental income
 - No new taxes or fees were needed for the project
- ADA accessibility
- Meet minimum standards for Police Department
 - Private interview rooms for criminals, victims, and others
 - Appropriate facilities to process and archive evidence
- Rehabilitate and activate an important facility in our community.
- Provide needed gathering/event space for the community

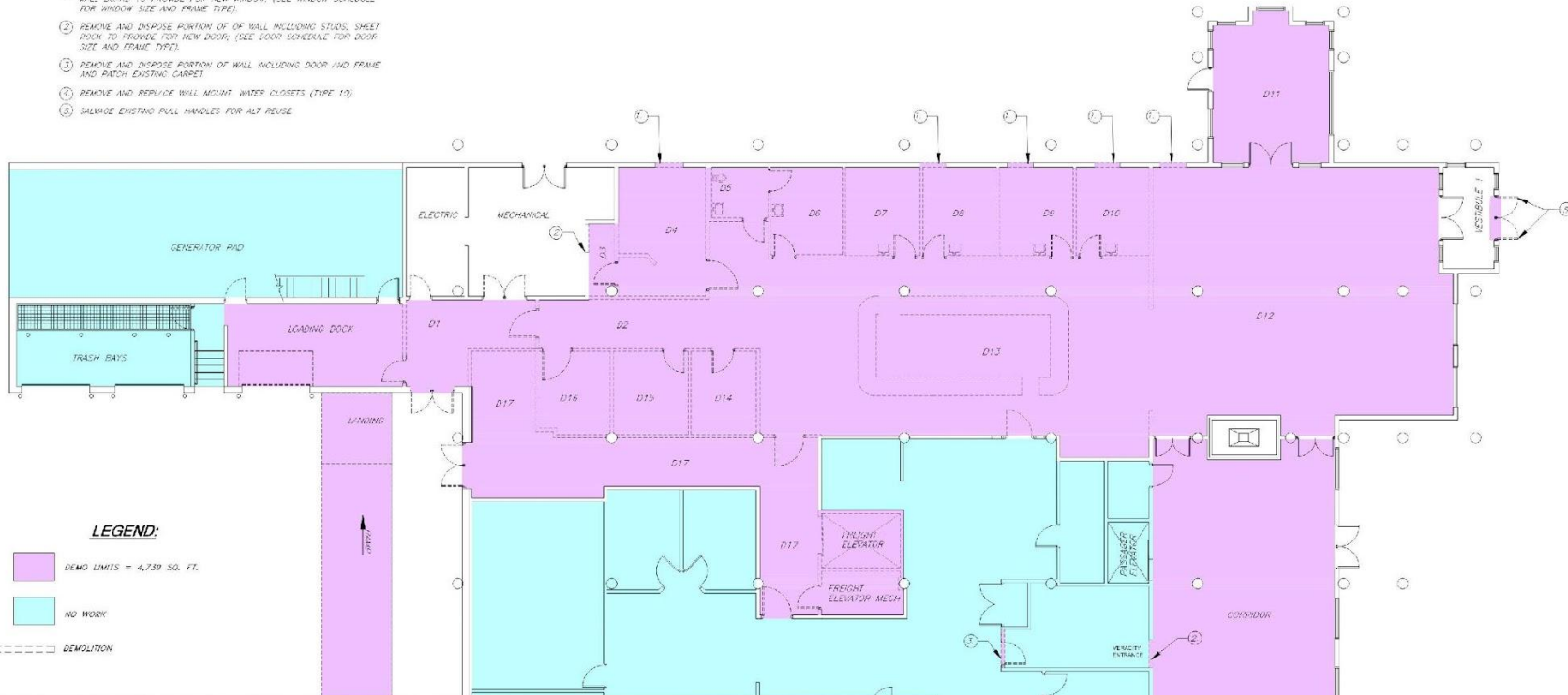
Want to know more? Ask a Perry City representative.

Disagree and want to vent? Feel free to let us know ;)



PERRY CITY CORPORATION
 THE LODGE CITY HALL REMODEL PROJECT
LEVEL 1 DEMOLITION FLOOR PLAN

- DEMO NOTES:**
- 1) REMOVE AND DISPOSE PORTION OF WALL INCLUDING WOOD FRAMING WALL BOARDS TO PREPARE FOR NEW WINDOW (SEE WINDOW SCHEDULE FOR WINDOW SIZE AND FRAME TYPE).
 - 2) REMOVE AND DISPOSE PORTION OF WALL INCLUDING STUD, SHEET ROCK TO FRAME FOR NEW DOOR (SEE DOOR SCHEDULE FOR DOOR SIZE AND FRAME TYPE).
 - 3) REMOVE AND DISPOSE PORTION OF WALL INCLUDING DOOR AND FRAME AND PATCH EXISTING CARPET.
 - 4) REMOVE AND REPLACE WALL MOUNT WATER CLOSETS (TYPE 10).
 - 5) SALVAGE EXISTING PULL HANDLES FOR ALT REUSE.



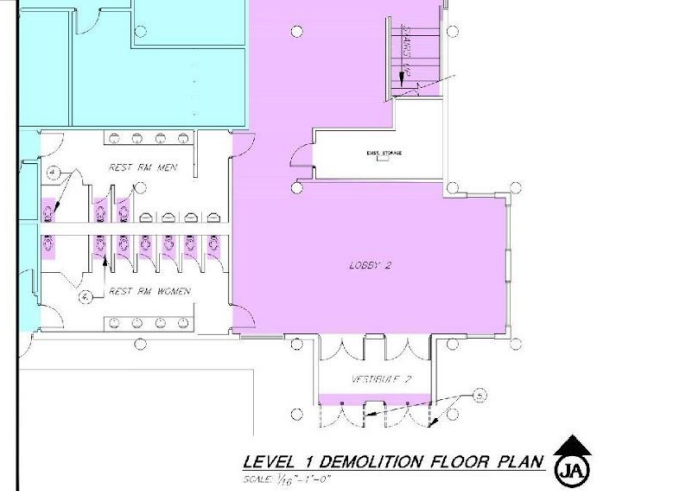
LEGEND:

DEMO LIMITS = 4,739 SQ. FT.

NO WORK

DEMOLITION

NAME	DEMO SCHEDULE											
	MECHANICAL EQUIPMENT	INTERIOR DOORS	EXTERIOR DOORS	INTERIOR GLASS	GYPSUM CEILING	CEILING TILE	STUD WALLS	FLOORING/BASE BD.	CABINET/COUNTERTOP	PLUMBING	HVAC	ELECTRICAL
D1		●	●		●		●	●			●	●
D2		●			●		●	●			●	●
D3		●			●		●	●			●	●
D4		●			●		●	●	●	●	●	●
D5		●			●		●	●			●	●
D6		●			●		●	●			●	●
D7		●			●		●	●			●	●
D8		●			●		●	●			●	●
D9		●			●		●	●			●	●
D10		●			●		●	●			●	●
D11												
D12												
D13												
D14		●			●		●	●	RELOCATE TO D12			●
D15		●			●		●	●				●
D16		●			●		●	●				●
D17		●			●		●	●				●
VESTIBULE 1			●	●					●			
VESTIBULE 2			●	●								
ELEVATOR MECH												
FREIGHT ELEVATOR	●											
LOADING DOCK		●										
RESTROOM MEN			●									●
RESTROOM WOMEN			●									●
GENERATOR PAD	●											
CORRIDOR												●
LOBBY 2												



LEVEL 1 DEMOLITION FLOOR PLAN
 SCALE: 1/16" = 1'-0"

REVISION:

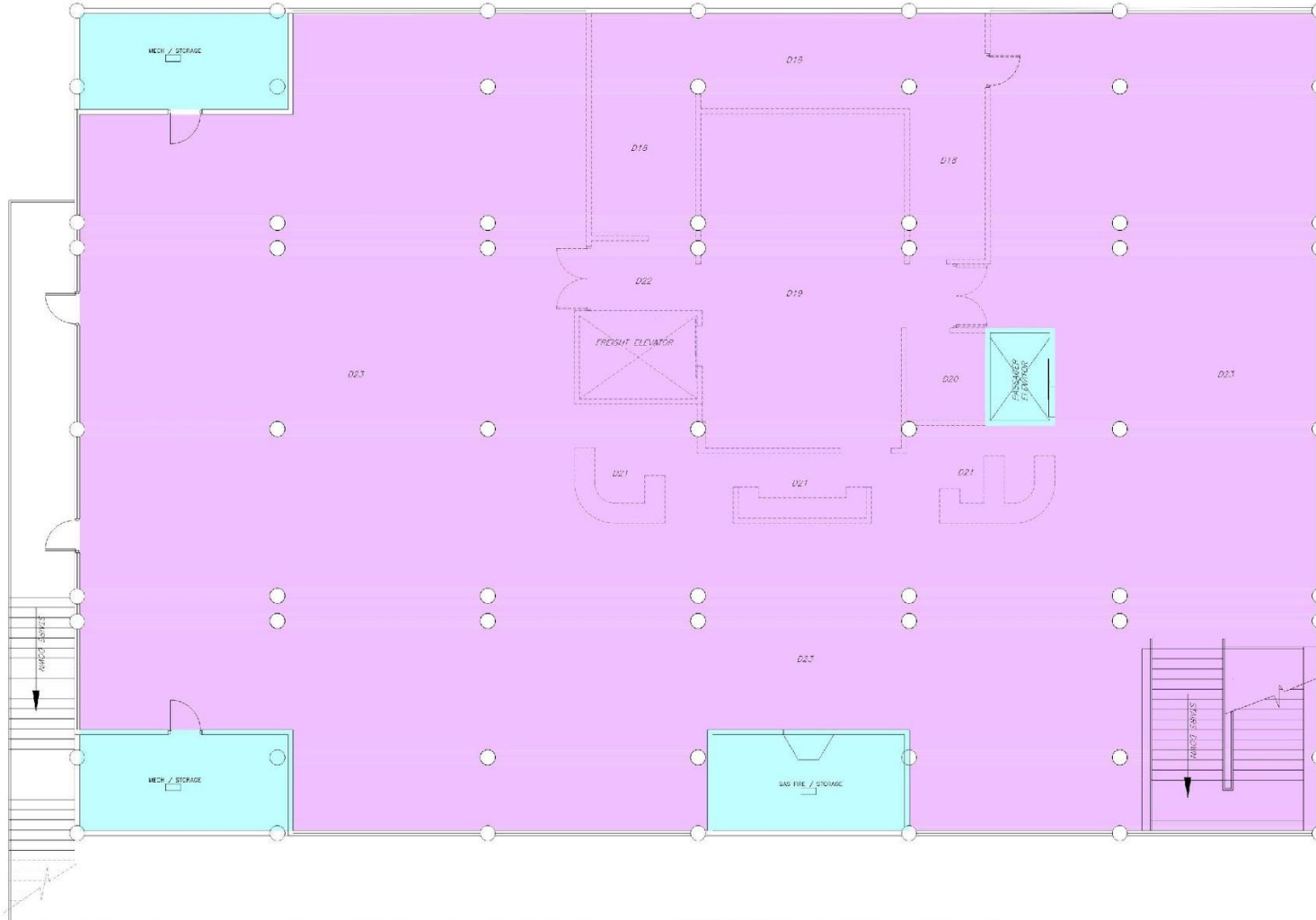
DATE:

SCALE: 24" x 36" / 1/8" = 1' / 1/16" = 1'

DESIGNED: SLS
 DRAWN: SLS
 CHECKED: SLS

SHEET: **D1.1**
 OF 1 SHEETS

PERRY CITY CORPORATION
 THE LODGE CITY HALL REMODEL PROJECT
LEVEL 2 DEMOLITION FLOOR PLAN



DEMO SCHEDULE:

NAME:	MECHANICAL EQUIPMENT	INTERIOR DOORS	EXTERIOR DOORS	INTERIOR GLASS	GYPSUM CEILING	CEILING TILE	STUD WALLS	FLOORING/BASE BD	CABINET/COUNTERTOP	PLUMBING	HVAC	ELECTRICAL OUTLETS/LIGHTING
D18		•			•		•	•	•	•	•	•
D19		•			•		•	•	•	•	•	•
D20					•		•	•	•	•	•	•
D21					•		•	•	•	•	•	•
D23		•			•		•	•	•	•	•	•
SHARDS:							•	•	•	•	•	•
FREIGHT ELEVATOR	•											

LEGEND:

- DEMO LIMITS = 9,143 SQ. FT.
- NO WORK
- DEMOLITION

LEVEL 2 DEMOLITION FLOOR PLAN
 SCALE: 1/32" = 1'-0"



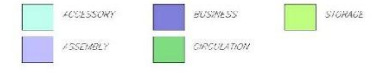
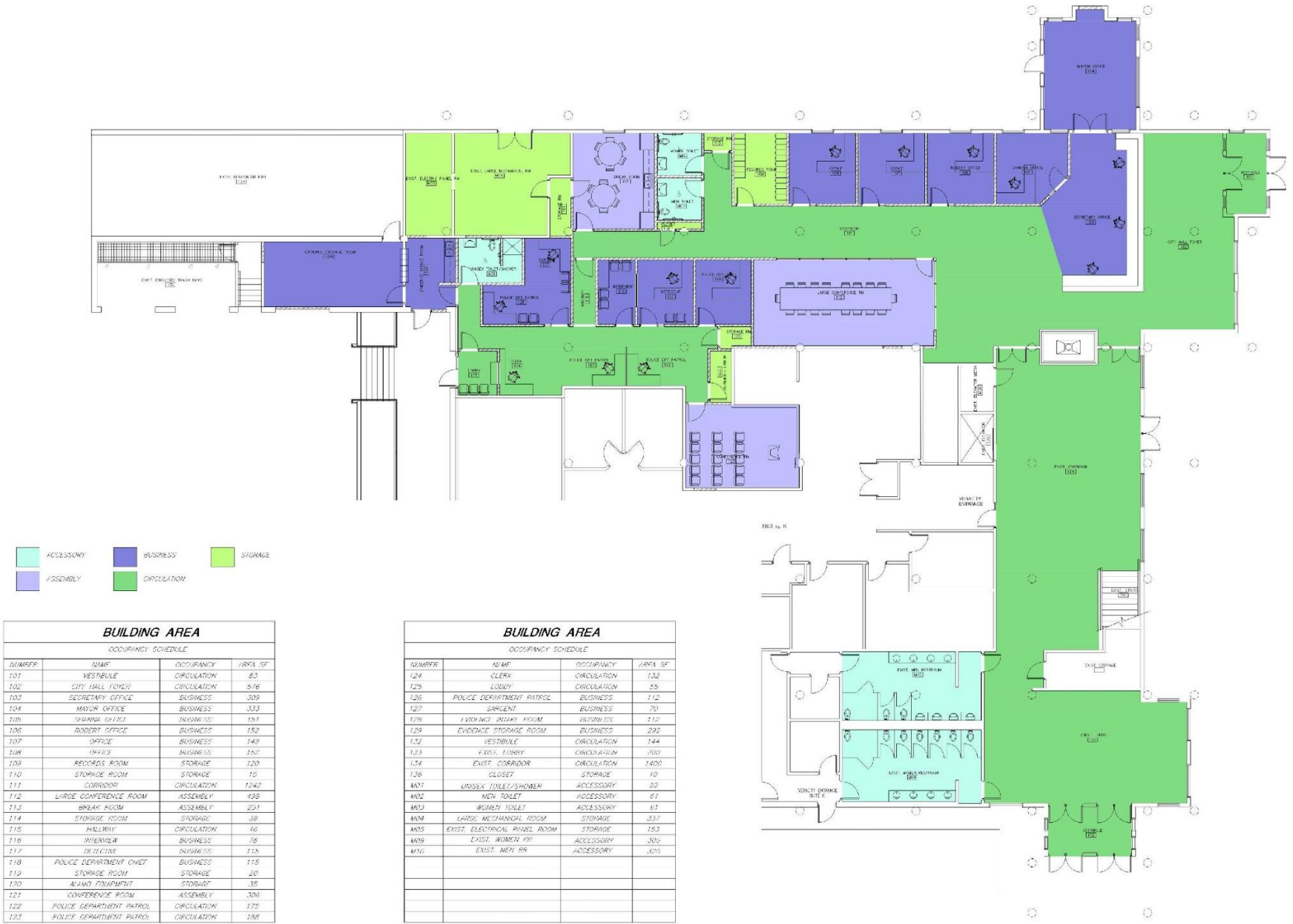
REVISION	DATE

SCALE:	SCALE:	SCALE:
24" x 36" / 3/16" = 1'	11" x 17" / 3/32" = 1'	

DESIGNED	DRAWN	CHECKED

SHEET:
D1.2
 OF 1 SHEETS

PERRY CITY CORPORATION
THE LODGE CITY HALL REMODEL PROJECT
NEW CONSTRUCTION LEVEL 1
OCCUPANCY FLOOR PLAN

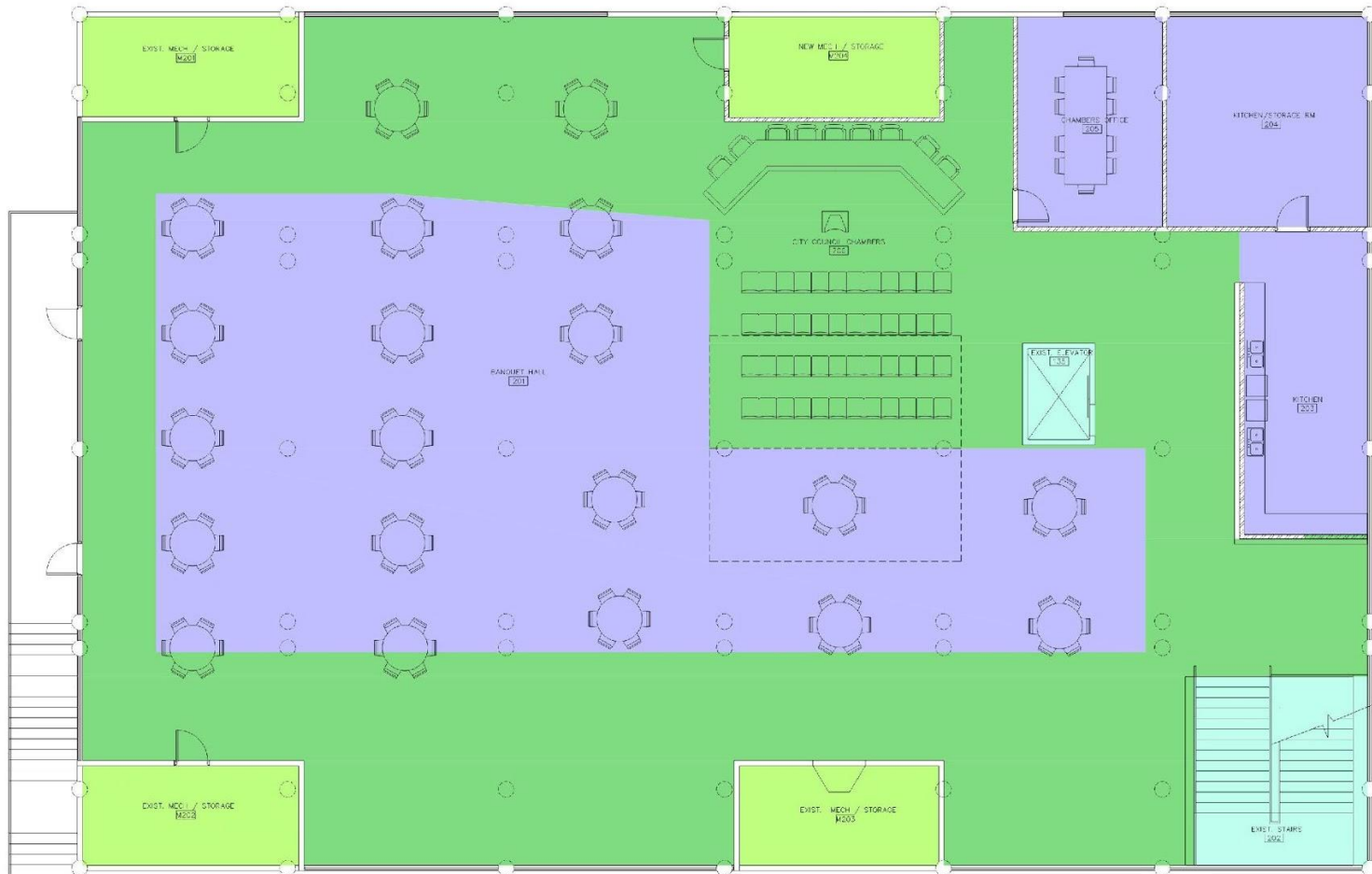


BUILDING AREA			
OCCUPANCY SCHEDULE			
NUMBER	NAME	OCCUPANCY	AREA SF
101	VESTIBULE	CIRCULATION	83
102	CITY HALL LOBBY	CIRCULATION	976
103	SECRETARY OFFICE	BUSINESS	309
104	MAYOR OFFICE	BUSINESS	333
105	THOMAS OFFICE	BUSINESS	151
106	ROBERT OFFICE	BUSINESS	152
107	OFFICE	BUSINESS	149
108	OFFICE	BUSINESS	157
109	RECORDS ROOM	STORAGE	120
110	STORAGE ROOM	STORAGE	15
111	CORRIDOR	CIRCULATION	1242
112	LARGE CONFERENCE ROOM	ASSEMBLY	498
113	BREAK ROOM	ASSEMBLY	291
114	STORAGE ROOM	STORAGE	39
115	HALLWAY	CIRCULATION	66
116	INTERVIEW	BUSINESS	78
117	DELECTIVE	BUSINESS	115
118	POLICE DEPARTMENT CHIEF	BUSINESS	115
119	STORAGE ROOM	STORAGE	20
120	WARD ROOM	STORAGE	35
121	CONFERENCE ROOM	ASSEMBLY	308
122	POLICE DEPARTMENT PATROL	CIRCULATION	175
123	POLICE DEPARTMENT PATROL	CIRCULATION	198

BUILDING AREA			
OCCUPANCY SCHEDULE			
NUMBER	NAME	OCCUPANCY	AREA SF
124	CLERK	CIRCULATION	132
125	LOBBY	CIRCULATION	55
126	POLICE DEPARTMENT PATROL	BUSINESS	112
127	SARGENT	BUSINESS	70
128	FORWARD INTAKE ROOM	RESTROOMS	112
129	EVIDENCE STORAGE ROOM	BUSINESS	292
132	VESTIBULE	CIRCULATION	144
133	EXIST. LOBBY	CIRCULATION	700
134	EXIST. CORRIDOR	CIRCULATION	1400
136	CLOSET	STORAGE	10
M01	UNISEX TOILET/SHOWER	ACCESSORY	92
M02	MEN TOILET	ACCESSORY	61
M03	WOMEN TOILET	ACCESSORY	61
M04	LARGE MECHANICAL ROOM	STORAGE	337
M05	EXIST. ELECTRICAL PANEL ROOM	STORAGE	153
M06	EXIST. WOMEN RR	ACCESSORY	306
M10	EXIST. MEN RR	ACCESSORY	370

REVISION	
DATE	

S.I.S. DRAWING	S.I.S. DRAWING
SCALE: 24" x 36" 1/8" = 1'	SCALE: 11" x 17" 1/16" = 1'



- ACCESSORY
- ASSEMBLY
- REARWHS.
- CIRCULATION
- STORAGE

BUILDING AREA			
OCCUPANCY SCHEDULE			
NUMBER	NAME	OCCUPANCY	AREA SF
120	EXISTING ELEVATOR	ACCESSORY	87
201	BANQUET HALL	ASSEMBLY	3,071
202	EXISTING STAIRS	ACCESSORY	287
203	KITCHEN	ASSEMBLY	452
204	KITCHEN/STORAGE ROOM	ASSEMBLY	582
205	CHAMBERS OFFICE	ASSEMBLY	278
206	CITY COUNCIL CHAMBERS	CIRCULATION	4,582
ME01	EXISTING MECHANICAL/STORAGE	STORAGE	186
ME02	EXISTING MECHANICAL/STORAGE	STORAGE	186
ME03	EXISTING MECHANICAL/STORAGE	STORAGE	180
ME04	NEW MECHANICAL/STORAGE	STORAGE	183

LEVEL 2 OCCUPANCY FLOOR PLAN
SCALE: 1/32" = 1'-0"



PERRY CITY CORPORATION
THE LODGE CITY HALL REMODEL PROJECT
NEW CONSTRUCTION LEVEL 2
OCCUPANCY FLOOR PLAN

REVISION	DATE

SCALE	DATE

















