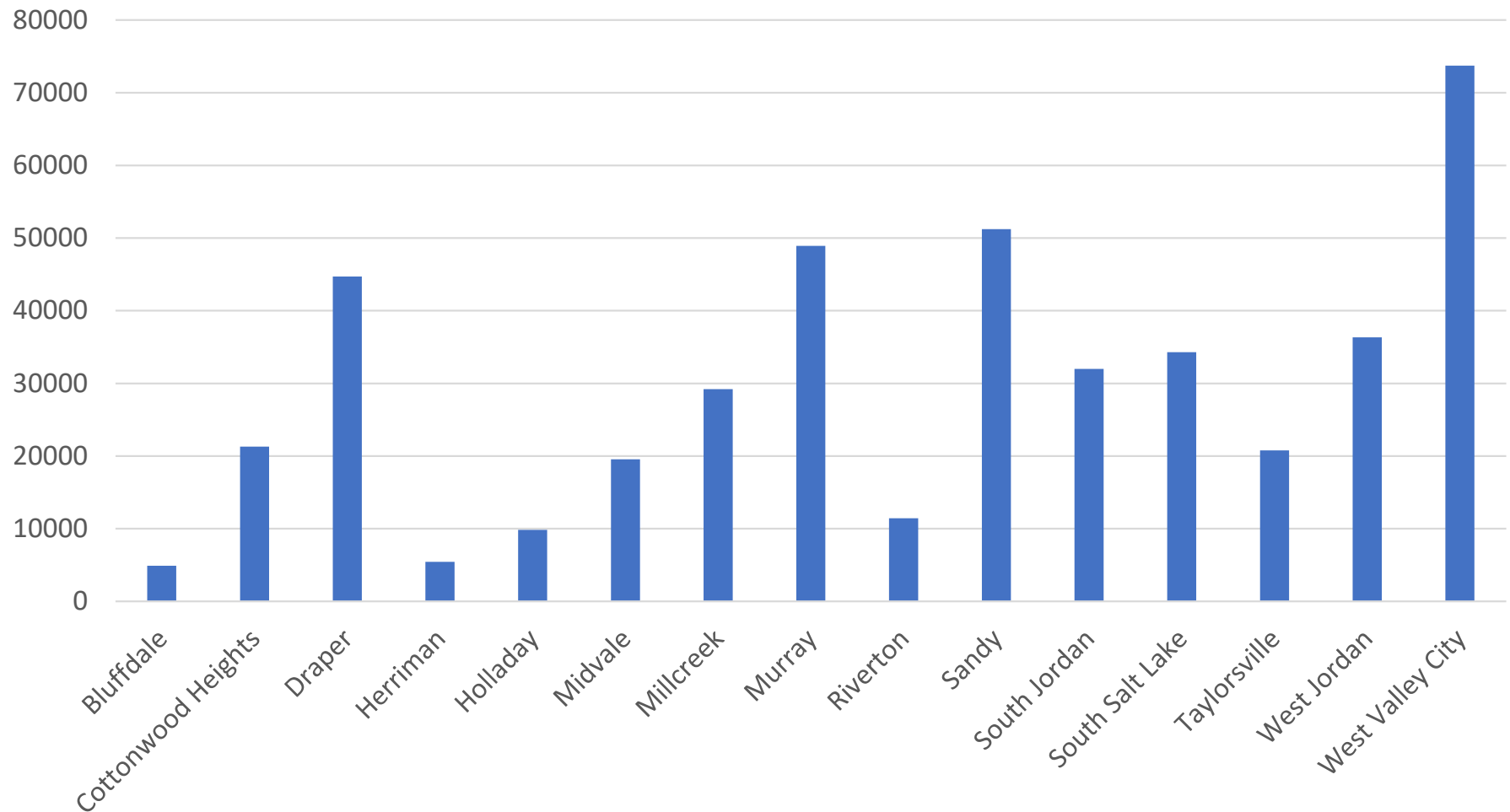
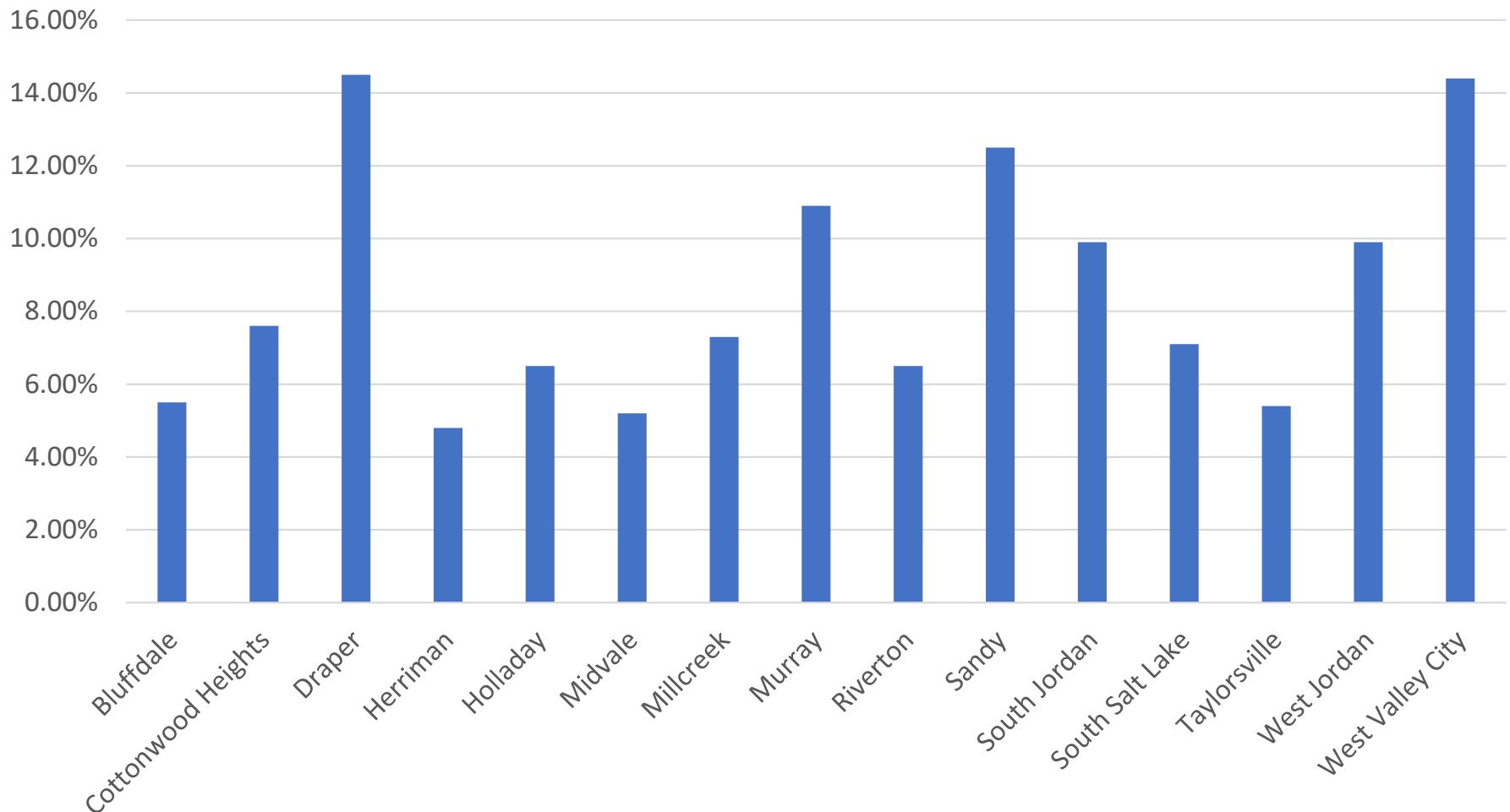


2021 Employment

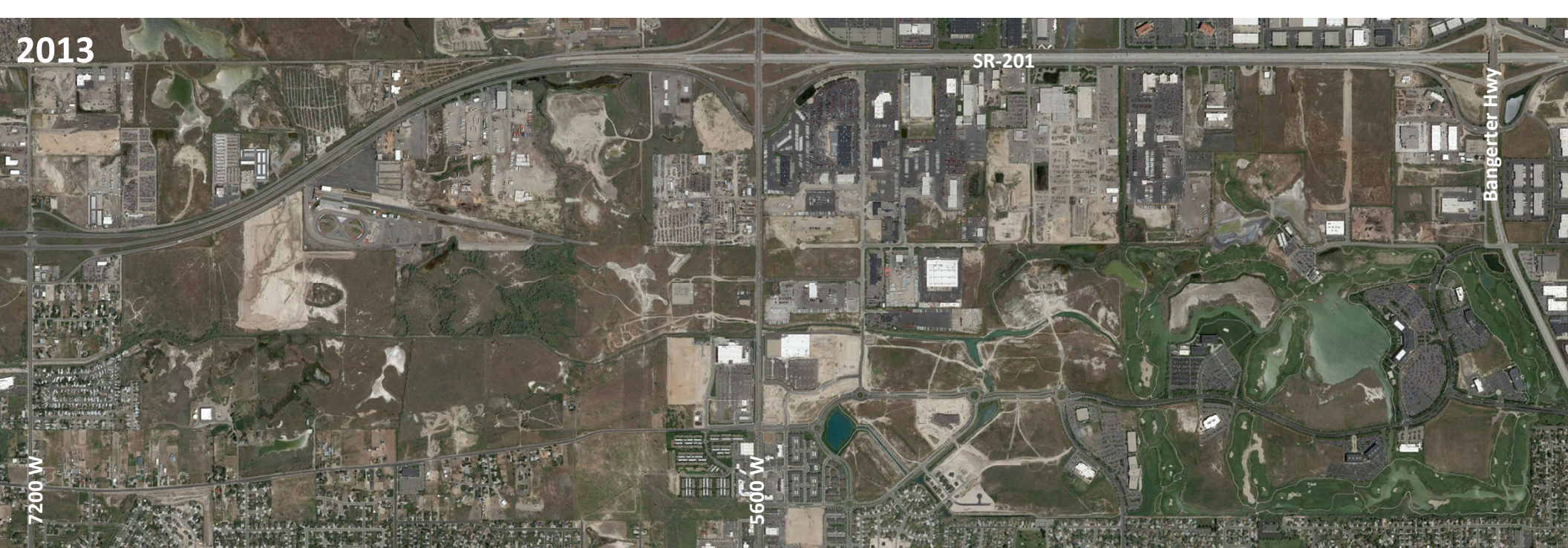


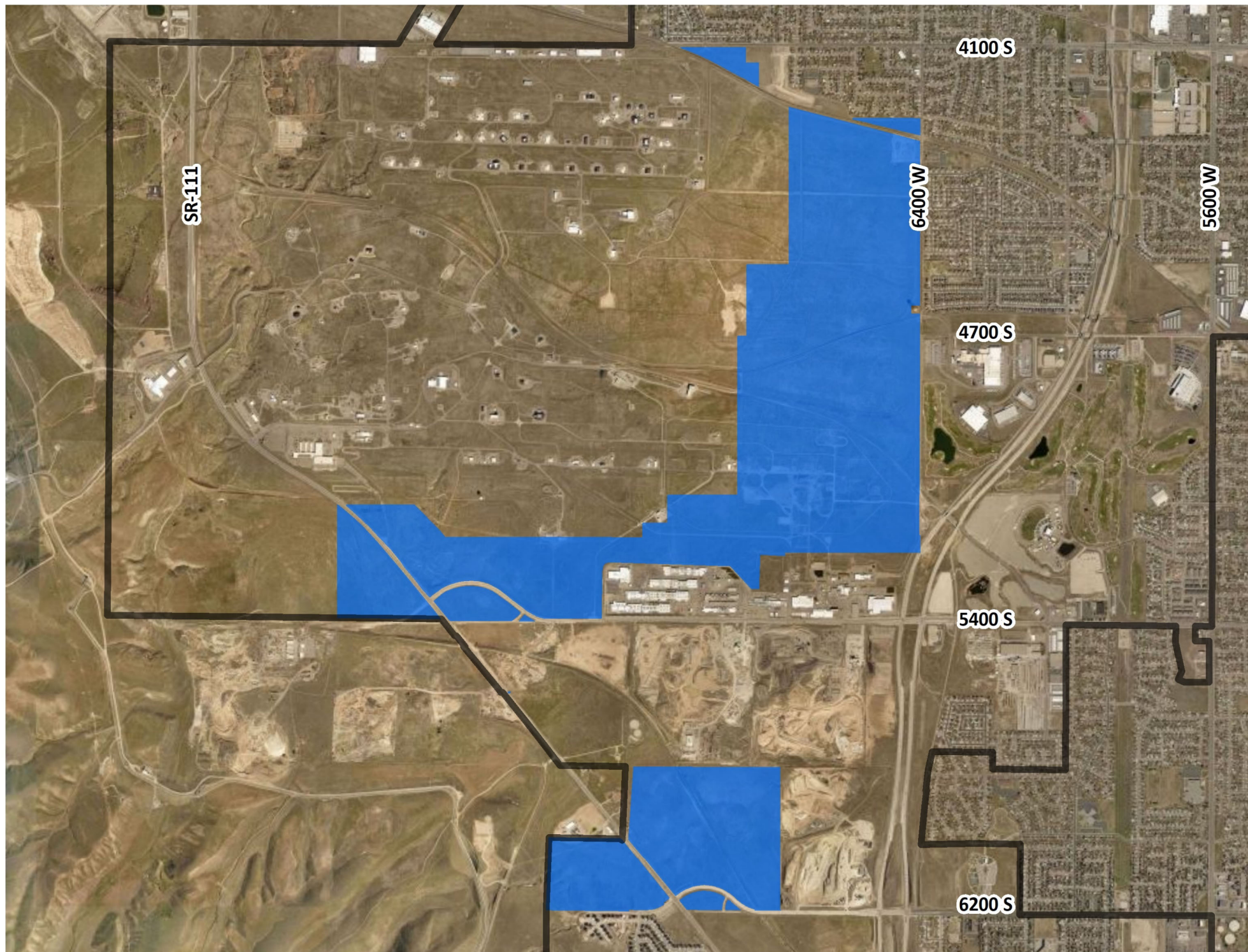
Source: Utah Department of Workforce Services

2021 Living and Employed in Municipality



Source: U.S. Census Bureau





Central Station Apartments
330 units at 2940 W 3650 S
108.9 units/acre



Decker Lake Station Apartments
219 units at 3078 S Decker Lake Dr
78.5 units/acre



Back 9 Apartments
263 units at 2600 W 3800 S
72.1 units/acre



Sage Valley Apartments
430 units at 1770 W 4100 S
42.3 units/acre



H2O Lofts Rental Townhomes and Apartments
286 units at 2892 S Decker Lake Dr
17.8 units/acre



Erin Hills Townhomes
130 units at 3567 S 5600 W
10.9 units/acre



Lofts on 35th
50 units at 4565 W 3500 S
16.3 units/acre



Bonneville Townhomes
64 units at 2876 S 5655 W
11.7 units/acre



Redwood Townhomes
24 units at 2351 S Redwood Rd
13.3 units/acre

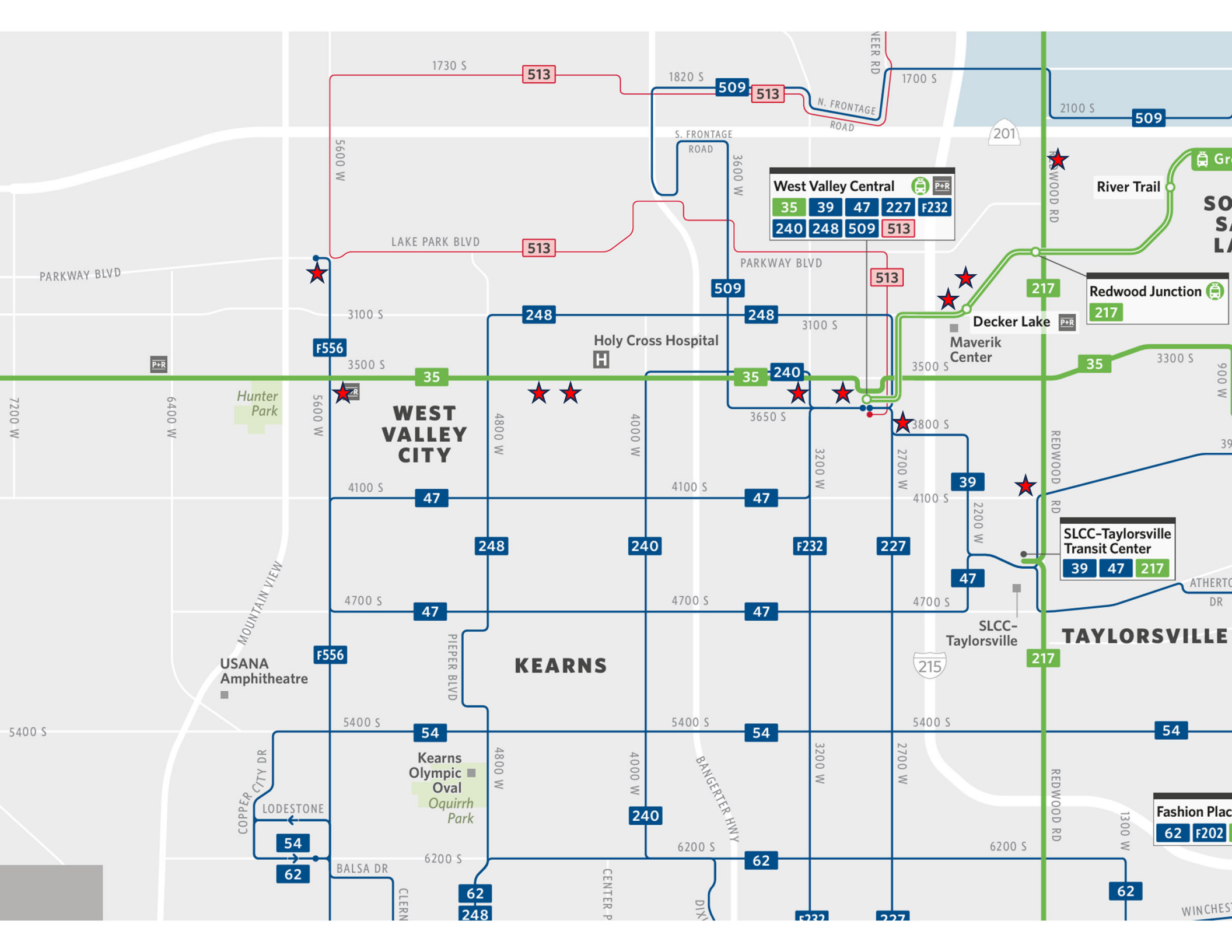


Meadows on 32nd
33 units at 3554 S 3200 W
10.3 units/acre



Sonrise Townhomes
34 units at 3550 S 4400 W
10.1 units/acre

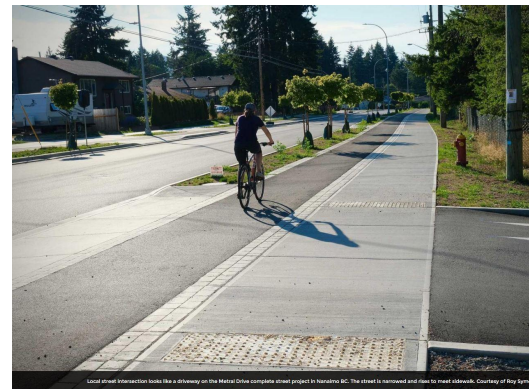




Wasatch Choice Vision 2027-2050

Objectives: Initial Draft for Discussion 12/23

1. Revise the overall Wasatch Choice framework, including centers (succinctly)
 - a. Refine the street typologies map -- of how street design can fit context
 - b. Enhance vision for parks and public spaces
 - c. Assess implementation progress of centers for transportation planning
2. Aspirational transportation vision
 - a. Example: Beehive Bikeways (family-friendly network plan)
3. Continue external forces (and policies) exploration
 - a. Including a focus on local implications
4. Public/ stakeholder process enhancements
5. Issue enhancements
 - a. Water
 - b. Better understand access to opportunities
 - c. Induced demand
6. Miscellaneous suggestions
 - a.



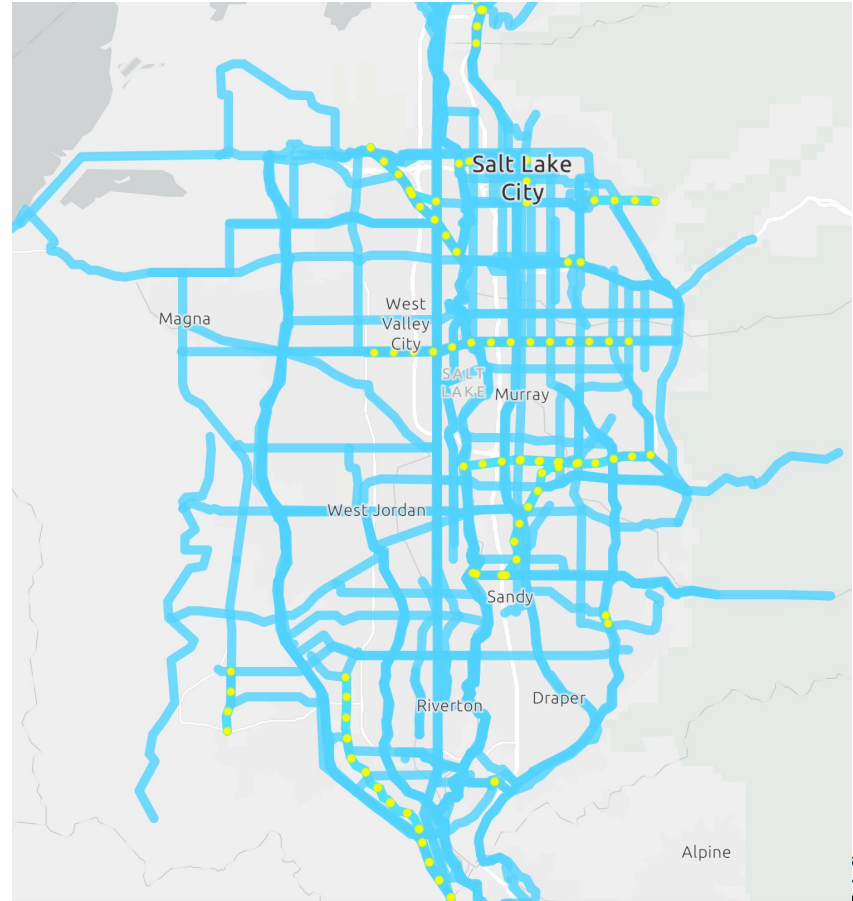
Family-Friendly Bicycle Network

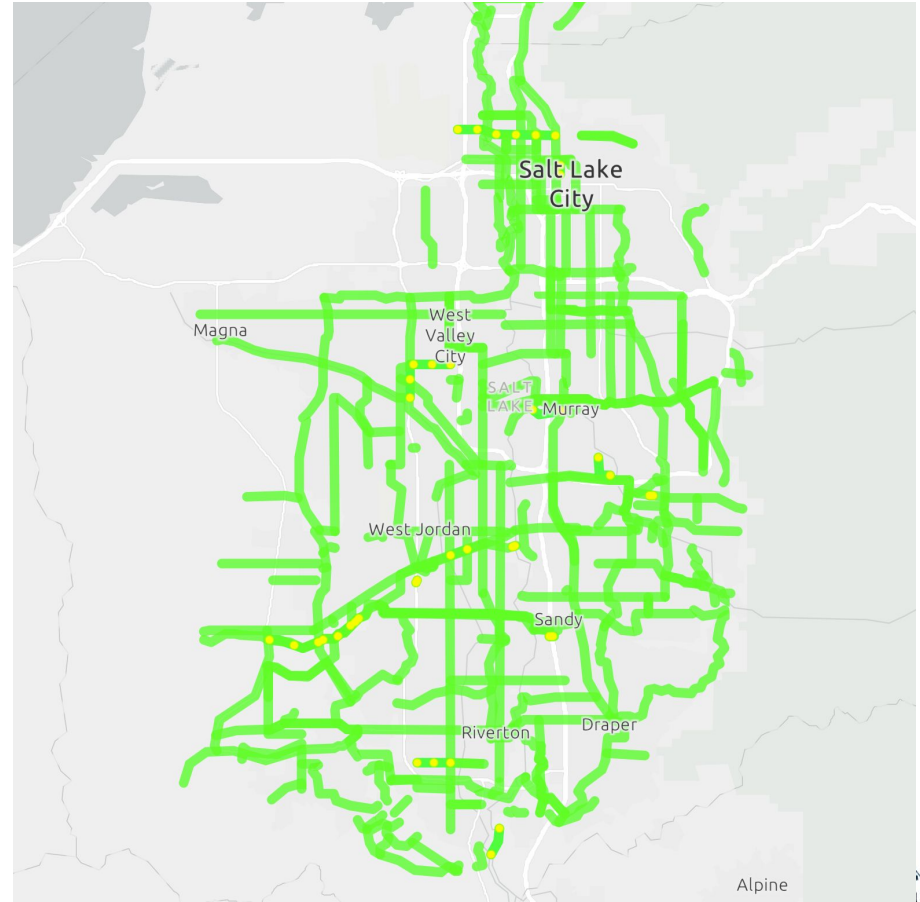
RGC TAC 6 December 2023

UTAH
TRAIL
NETWORK

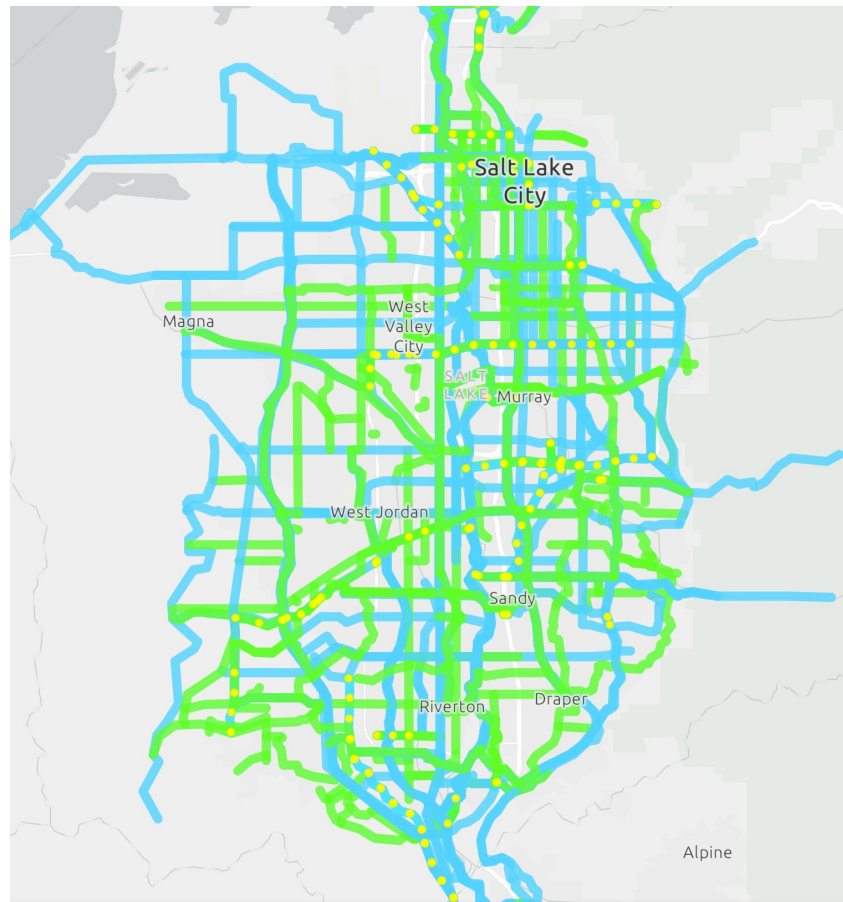


UTAH TRAIL NETWORK





UTAH TRAIL NETWORK



Next steps

UTAH TRAIL NETWORK

- ~~1. Develop potential trail list~~
2. Review trail status with local communities
3. Rank projects using TIF active prioritization model
4. Program and schedule funding for projects

Now – Feb '24

Mar '24

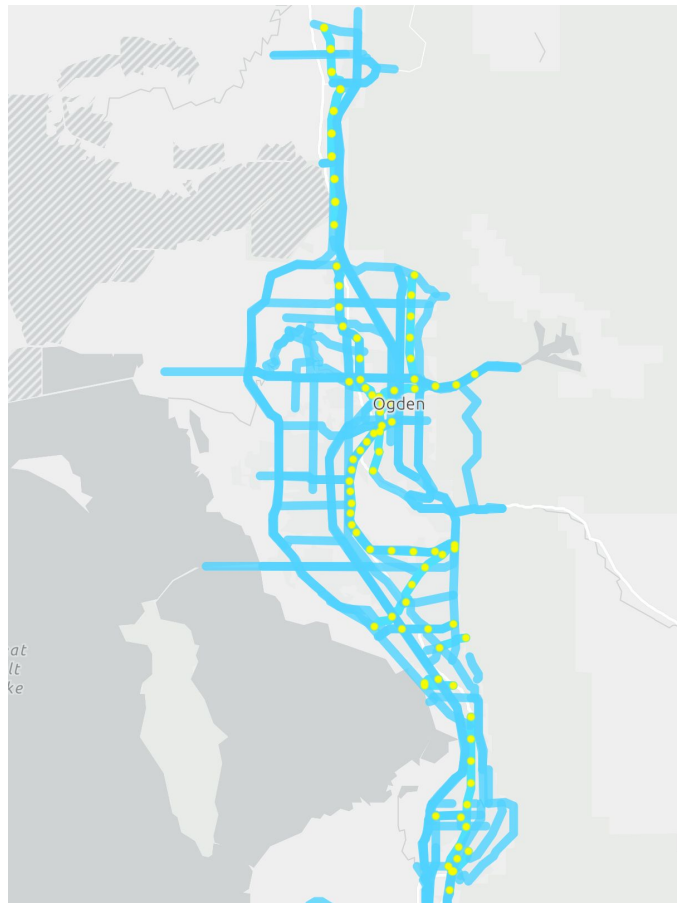
Next steps

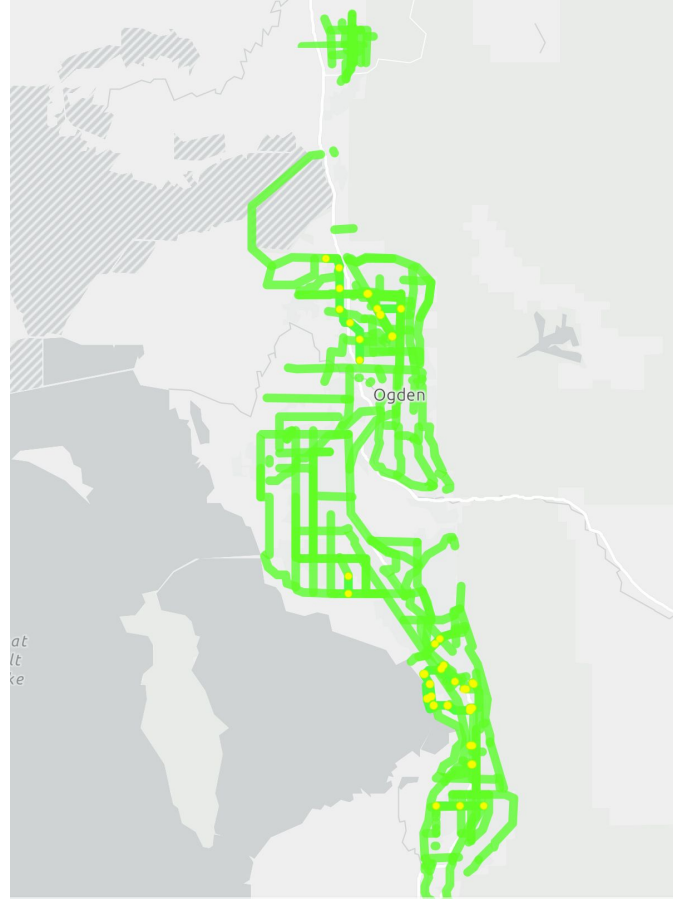


BeehiveBikeways

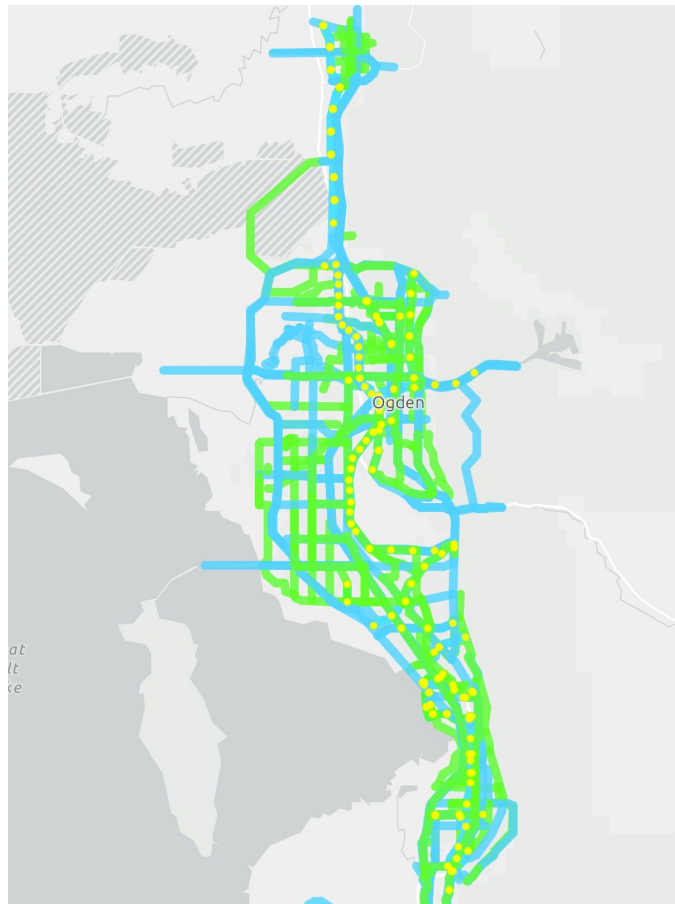
1. Bikeways vision
Winter
2. Corridor engagement
Spring/Summer
3. Implementation
resources
Summer/Fall

UTAH TRAIL NETWORK





UTAH TRAIL NETWORK



Next steps

UTAH TRAIL NETWORK

- ~~1. Develop potential trail list~~
2. Review trail status with local communities
3. Rank projects using TIF active prioritization model
4. Program and schedule funding for projects

Now – Feb '24

Mar '24

Next steps



BeehiveBikeways

1. Bikeways vision
Winter
2. Corridor engagement
Spring/Summer
3. Implementation
resources
Summer/Fall

2024 LEGISLATIVE SESSION PREVIEW

Jan 16 – March 1

Legislative Landscape



Modest
Surplus



New House
Leadership



Housing
Focused



2034
Fever

Governor's Budget Highlights

- \$45M public transit investment (TTIF)
- \$2.5M transit innovation grants
- \$1.5M and \$400K for air mobility
- \$150M for “starter homes” initiative
- \$45.5M for affordable housing
- \$250K for a market capacity analysis
- \$193M for homelessness
- \$40.5M for recreation
- \$81.6M for water



Helpful Resources

[Home](#)[About](#)[Committees](#)[Vision & Plans](#)[Programs](#)[Maps & Data](#)[Studies](#)[Public Involvement](#)[Contact](#)

The Wasatch Front Regional Council (WFRC) works closely with local, regional, state, and federal governments to promote legislative priorities and implement policies. WFRC works with its members and partners to support sound policies that are centered around or tied to transportation, such as land use, economic development, and air quality.

For additional information regarding government affairs, please contact [Miranda Jones Cox](#).

2024 Legislative Session Information and Resources

In preparation for the 2024 General Legislative Session which is slated to begin on Tuesday, January 16th, the Utah Legislature, Unified Economic Opportunity Commission, and other partners spent the interim studying various policy topics and providing recommendations. As a reminder, WFRC will track and engage on issues impacting transportation and land use planning in preparation for and during the session. In addition to receiving our weekly government affairs updates, please rely on this section to reference interim recommendations, and our bill and appropriations trackers.

[2024 Bill Tracker](#)[Appropriation Tracker](#)[Interim Policy Proposals](#)[Govt. Affairs Email List](#)

State Legislation and Policy

Recently Passed Growth Legislation



Bill Tracker

WFRC tracks bills that especially impact transportation and communities along the Wasatch Front during the legislative session.

- [2024 WFRC Bill Tracker](#)
- Previous Years: [2023](#), [2022](#), [2021](#), [2020](#), [2019](#), [2018](#)




Appropriations Tracker

WFRC tracks relevant funding item information as appropriations make their way




(PI) Brent Chamberlain, Ph.D. | Associate Professor

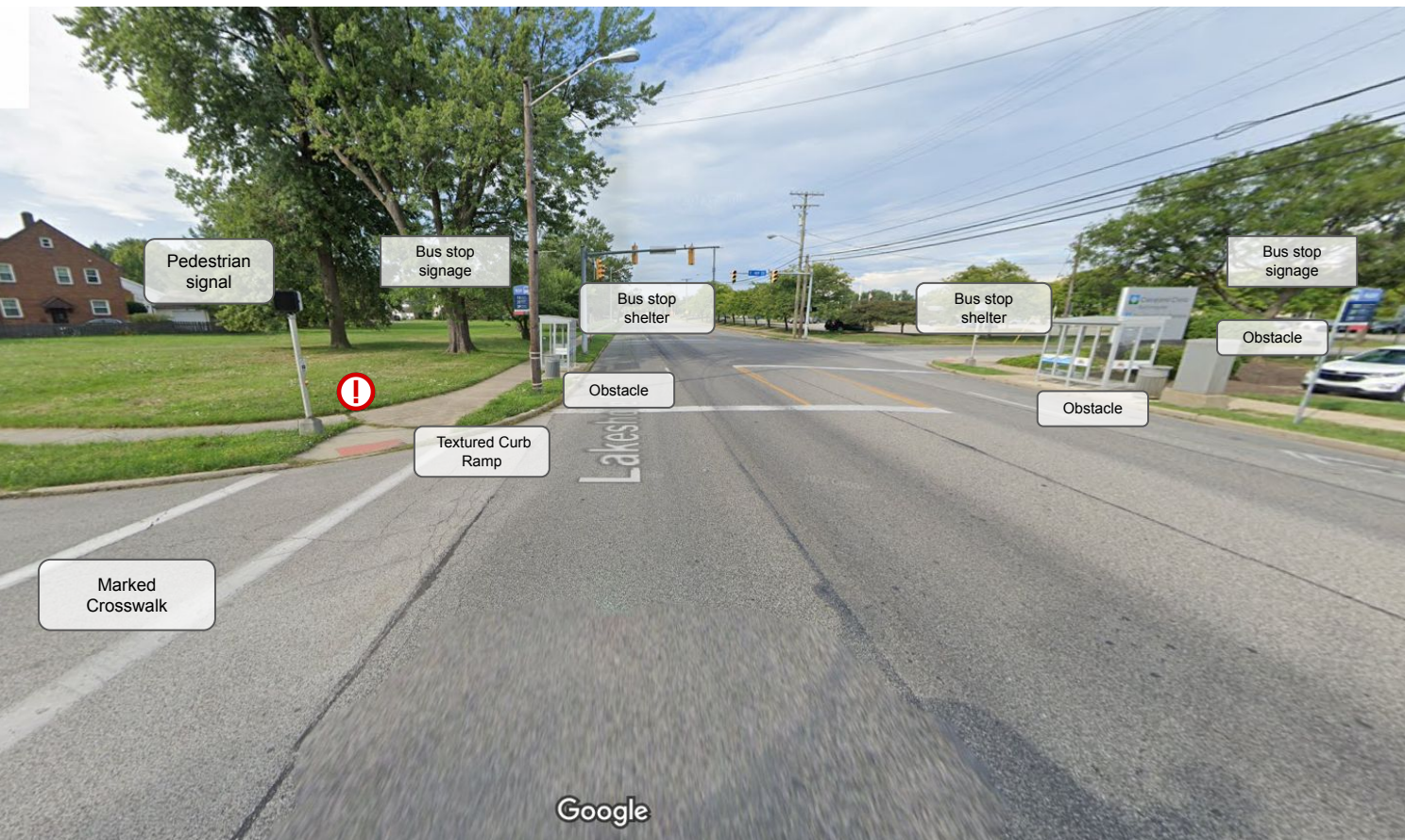
(Co-PIs) J. Froehlich, Y. Eisenberg, X. Qi, K. Christensen, J. Shanley, V. Novack, J. Kish, R. Fisher

A decorative graphic element consisting of a light green circle with an orange dot inside, positioned at the top right of a light grey rounded rectangular box.

AI-enhanced tools to help planners increase opportunities for people with disabilities by making transportation systems accessible.

A man with short brown hair and a light beard, wearing a blue button-down shirt, is speaking directly to the camera. He is in a modern office or library environment. Behind him to the left is a large wooden bookshelf filled with books. To his right, there are green armchairs and a small round table. Large windows in the background let in natural light, showing some greenery outside. A framed poster or chart is visible on the wall to the right.

Our prototype has been built
to be extremely scalable and expandable

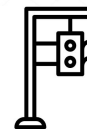


Accuracy of AI Detection



Curb Ramp: 77%

EDITABLE STROKE



Traffic Light Pole: 92%



Cross Walk 91%



Pedestrian Sign: 86%



Stop Sign: 92%

Transition Plans

Transition Plans are required for public serving entities with more than 50 employees. These were with the ADA regulations, to be completed by 1992.

The Transition Plan must include:

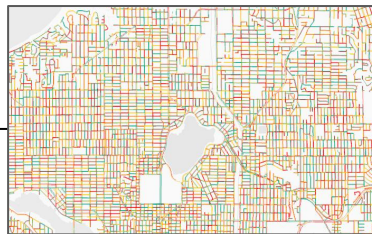
- (i) Identification of **physical obstacles** that limit accessibility in the public entity's facilities;
- (ii) Detailed methods that will be used to make the facilities accessible;
- (iii) Schedule for taking the steps necessary to achieve compliance with this section for each year in the plan;
- (iv) Indicate the official responsible for implementation of the plan.

The Americans with Disabilities Act

Federal disability civil rights legislation signed in 1990. Addresses public entities maintaining public rights of way.

Why does it matter?

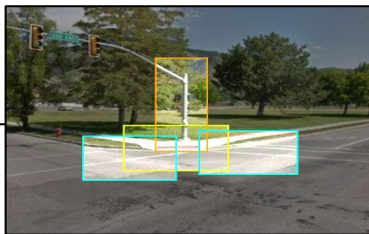
- Non-compliance is discriminatory, leads to lawsuits, and denial of federal funding opportunities
- In 2010 the ADA Accessibility Guidelines were updated, and updated transition plan and self evaluation were suggested at this time
- **August 2023: adoption of the Pedestrian Rights of Way Accessibility Guide (PROWAG) standards by ADAAG (<https://www.access-board.gov/prowag/>)**
- The Bipartisan Infrastructure Investment and Jobs Act introduced trillions in funding for infrastructure related projects.



Maps of system-wide transportation accessibility provides spatial view of issues



Scorecard and metrics give overview of status and progress



AI automatically identifies accessible infrastructure from Google Street view

Potential Applications

- Active transportation plans
- Walkability projects
- Aging in Place Initiatives
- Safe Routes to School improvements
- Mobility network improvements
- Asset management
- Prioritization and maintenance management
- ADA Transition plan data collection

Partnership Opportunities

- Federal grant funding
- Grant matching
- Resource connecting and gathering
- Comprehensive planning
- Built environment data collection



Survey: <https://tinyurl.com/UPWERC>

Contact: brent.chamberlain@usu.edu

An aerial photograph of a parking lot with two rows of numbered parking spaces. The top row is numbered 623 to 606 from left to right, and the bottom row is numbered 664 to 649 from left to right. Various cars are parked in the spaces. A large white arrow points right at the bottom center, and a smaller white arrow points left on the left side. A light pole is visible in the bottom right area.

Utah Parking Modernization Guide

Regional Growth Committee TAC
December 5, 2023



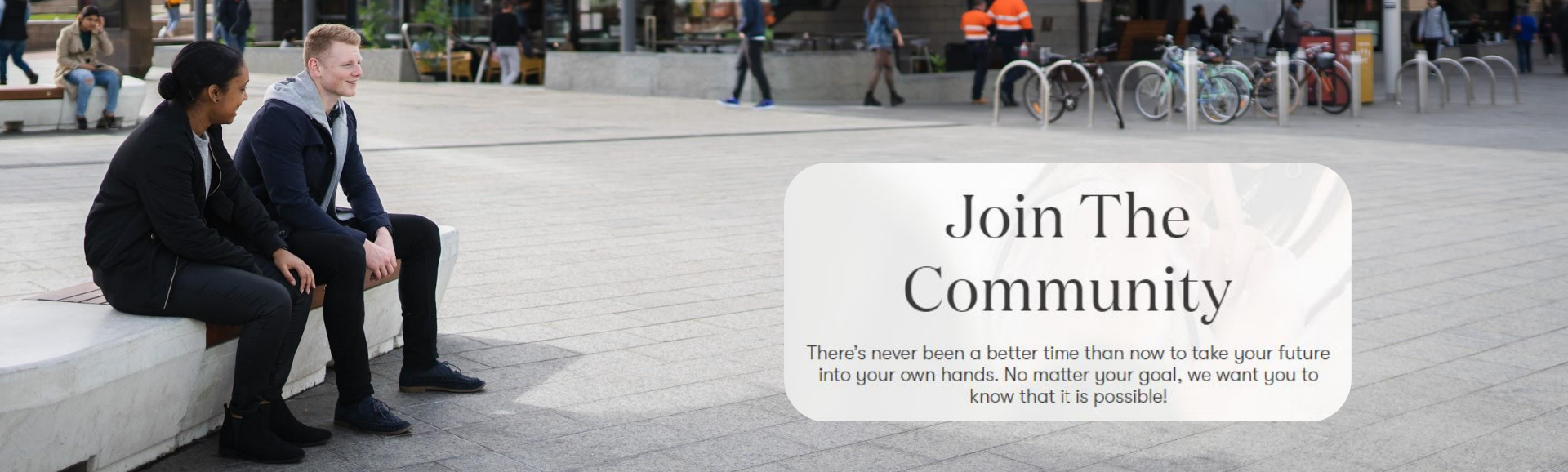
UTAH PARKING MODERNIZATION GUIDEBOOK

OCTOBER 2023

PREPARED BY

FEHR & PEERS
LELAND
CONSULTING
GROUP

RESEARCH FROM REGIONAL COUNCILS
LIDOT **UTA**
improving Utah Mobility
SALT LAKE COUNTY
PLANNING & TRANSPORTATION



Join The Community

There's never been a better time than now to take your future into your own hands. No matter your goal, we want you to know that it is possible!

3 Steps To Get Started:



Start Sharing

Present to your Planning Commission or City Council to help get the conversation started.



Choose Your Business Essentials Kit

Explore your parking ordinance through WFR's ordinance assistance and auditing program.



Sign Your Agreement

Modernize your parking with technical assistance from TLC.

2024

PARKING LIKE YOU'VE NEVER SEEN BEFORE!

IS THE YEAR TO MODERNE!

IMPROVE YOUR CITY'S CORE!

The background image shows a close-up of a person's hand working on a printed circuit board (PCB). The hand is holding a soldering iron, which is being used to solder components onto the board. Several cylindrical capacitors and other electronic components are visible on the PCB. The image is slightly blurred, focusing on the text overlay.

Technical Trainings

- P** Webinars
- P** Parking mobile tours
- P** Trainings with Planning Commission and City Council
- P** Information sharing

Upcoming Webinar

Parking 2.0

Using Modern Parking Approaches
to Maximize Community Benefits

UT UTAH LEAGUE OF
CITIES AND TOWNS



December 14th
Noon MT