

2023-2050 RTP Update: Needs-Based Phasing Criteria and Local Context for Regional Projects

Regional Growth Committee // January 20, 2022



Wasatch Choice Vision



Economic Development

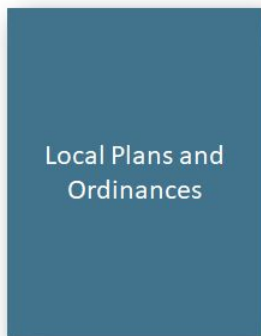
Comprehensive
Economic Development
Strategy



Land Use

Transportation
and Land Use
Connection

Local Plans and
Ordinances



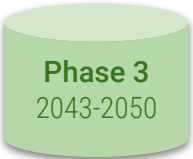
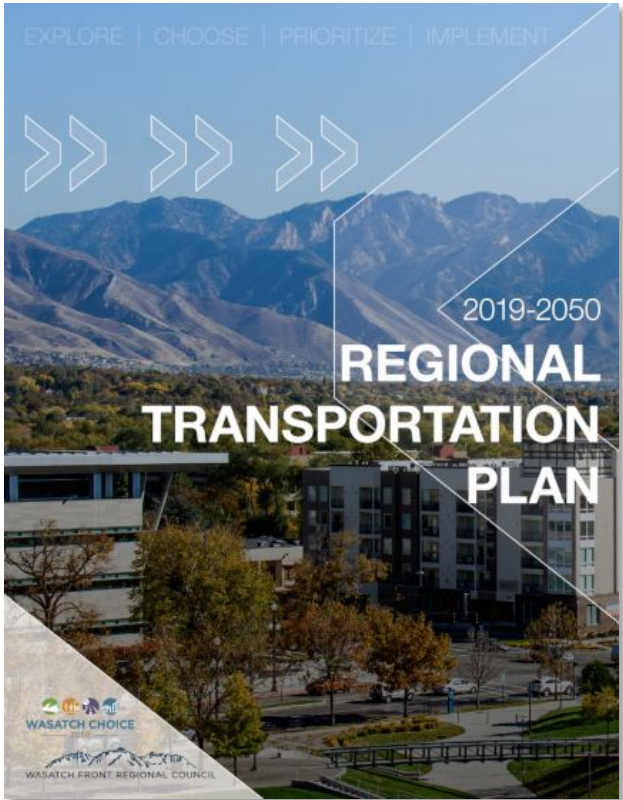
Transportation

Regional
Transportation
Plan



-  Livable and healthy communities
-  Access to economic and educational opportunities
-  Manageable and reliable traffic conditions
-  Quality transportation choices
-  Safe, user friendly streets
-  Clean air
-  Housing choices and affordable living expenses
-  Fiscally responsible communities and infrastructure
-  Sustainable environment
-  Ample open space and recreational opportunities

Regional Transportation Plan Overview



2023-2050 RTP Objectives



Address disruptions and
uncertainties



Improve fit of the regional vision
with local plans



Explore policies, not just
investments



Support the implementation
of the Vision

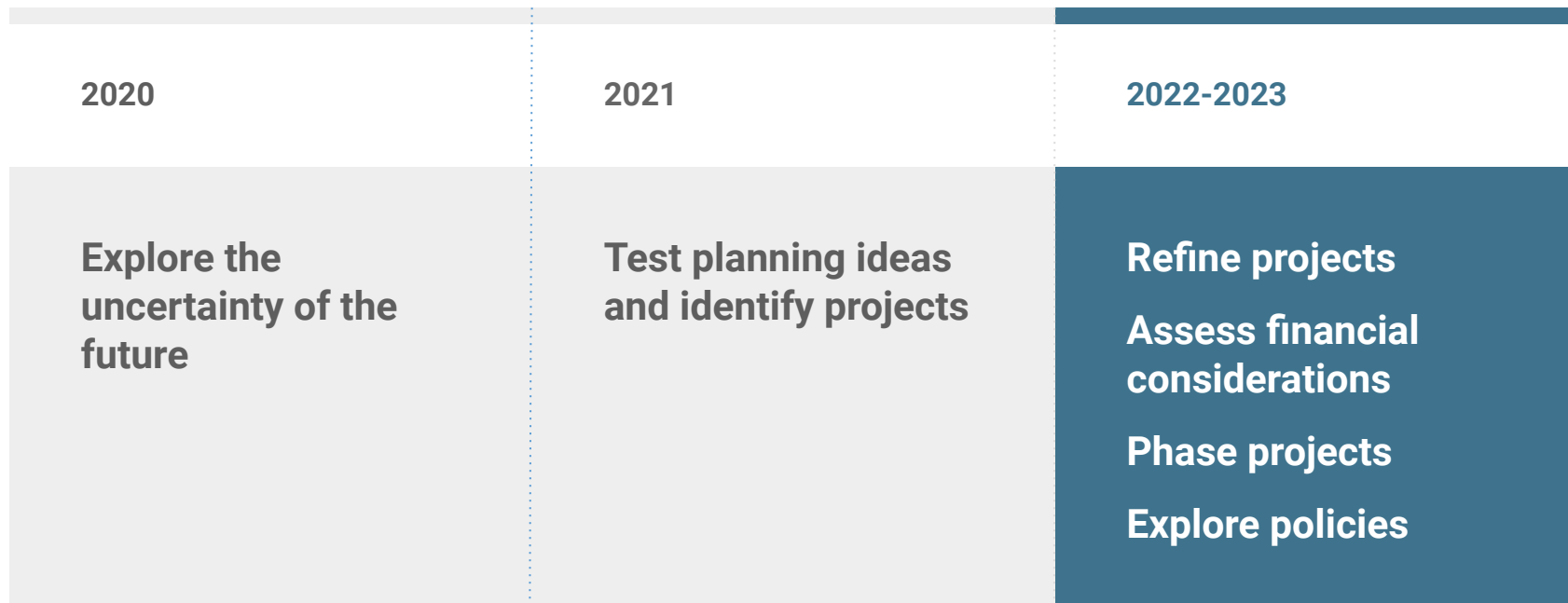


Use performance measures
to inform decisions



Engage communities, partner
agencies, stakeholders, and the
public in the planning process

Where are we?



Needs-Based Phasing Criteria



Proposed Phasing Framework

Draft 2023-2050 Regional Transportation Plan Phasing Criteria

Wasatch Choice Goals



Federal Performance Measures

Highway Performance Goals

- ▲ Safety
- ▲ Infrastructure condition/State of Good Repair
- ▲ Congestion reduction
- ▲ System reliability
- ▲ Freight movement and economic vitality
- ▲ Environmental sustainability

Transit Performance Goals

- ▲ Safety
- ▲ State of Good Repair

Roadway

Wasatch Choice Goal	Planning Criteria	✓
Safe, user-friendly systems	Improve safety	✓
Access to economic and educational opportunities	Access to economic and educational opportunities	✓
Manageable and reliable traffic conditions	Freight congestion	✓
	Delay reduction	✓
	Network connectivity and redundancy	✓
Highly responsible communities and infrastructure	Completed environmental study	✓
	Asset management	✓
Housing choices and affordable living	Access to economic and educational opportunities for Equity Focus Areas	✓
Quality transportation choices	Support transportation choices	✓
Livable and healthy communities	Support Wasatch Choice items	✓

Transit

Wasatch Choice Goal	Planning Criteria	✓
Quality transportation choices	Existing ridership	✓
	Proposed ridership	✓
Access to economic and educational opportunities	Access to existing amenities	✓
	Access to economic and educational opportunities	✓
Housing choices and affordable living	Access to economic and educational opportunities for Equity Focus Areas	✓
Livable and healthy communities	Activity density	✓
Highly responsible communities and infrastructure	Completed environmental or similar study and/or corridor preservation	✓
Safe, user-friendly systems	Network connectivity score	✓
Manageable and reliable traffic conditions	Roadway congestion	✓
Clean air	Reduction of vehicle cost score	✓

Active Transportation

Wasatch Choice Goal	Planning Criteria	✓
Safe, user-friendly systems	Existing bicyclist/pedestrian utilization	✓
	Project increase safety	✓
Access to economic and educational opportunities	Access to economic and educational opportunities	✓
Manageable and reliable traffic conditions	Network connectivity	✓
Housing choices and affordable living	Service Equity Focus Areas	✓
Livable and healthy communities	Activity density	✓
	Support Wasatch Choice items	✓
Highly responsible communities and infrastructure	Existing right-of-way usage	✓
Quality transportation choices	Connections to transit	✓

Policy Exploration



EXTERNAL POLICIES



APP DEVELOPMENT



CONGESTION
PRICING



CURBSIDE
MANAGEMENT



FARE-FREE
TRANSIT



STREET
DESIGN
MODIFICATIONS



MANAGED LANES



PARKING
MODERNIZATION



ROAD USAGE
CHARGE



STREET
CONNECTIVITY



SUBSIDIZED
E-BIKE
PURCHASES

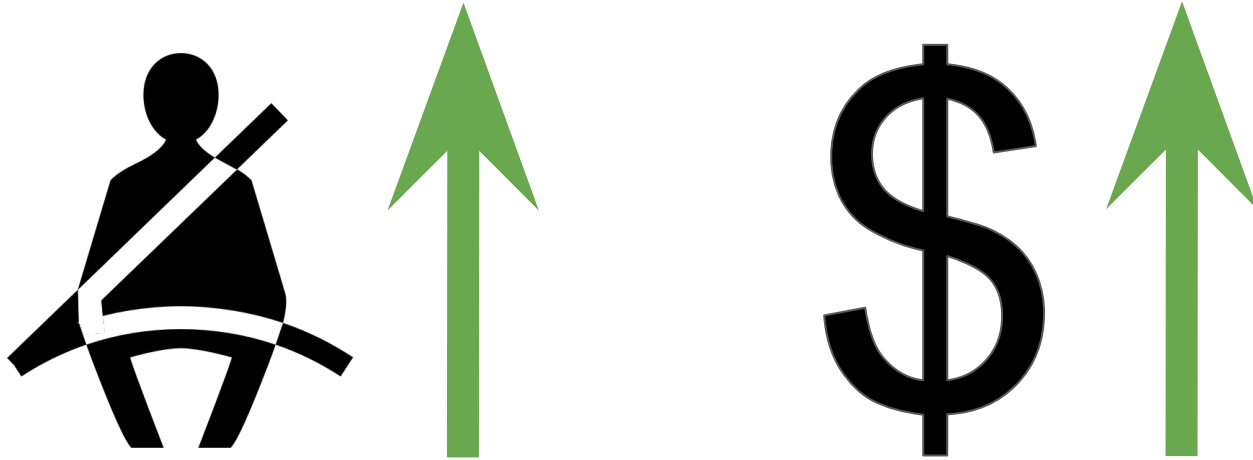


TRANSIT
PRIORITY

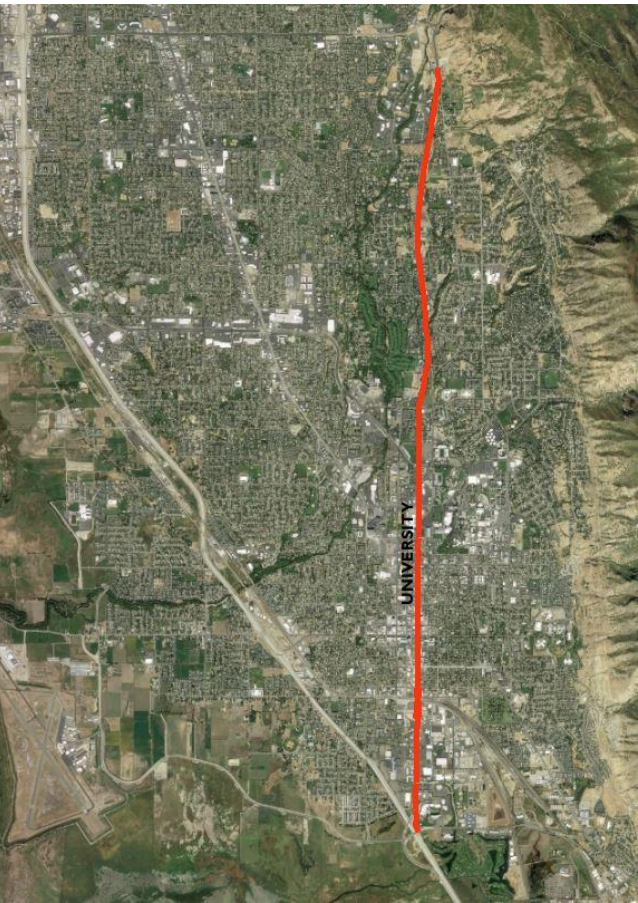
Local Context for Regional Projects



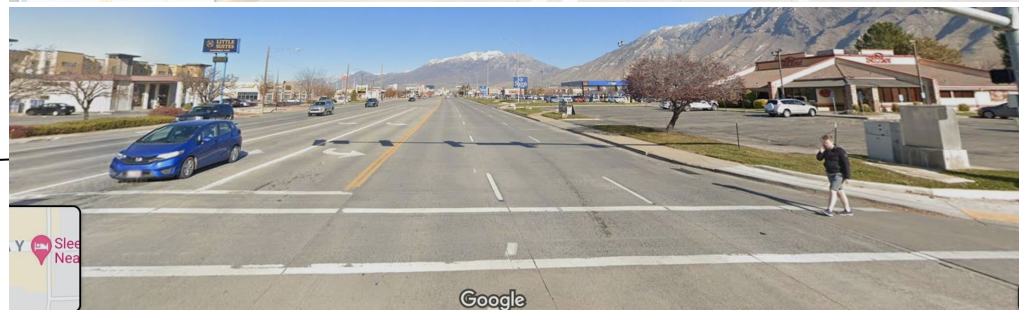
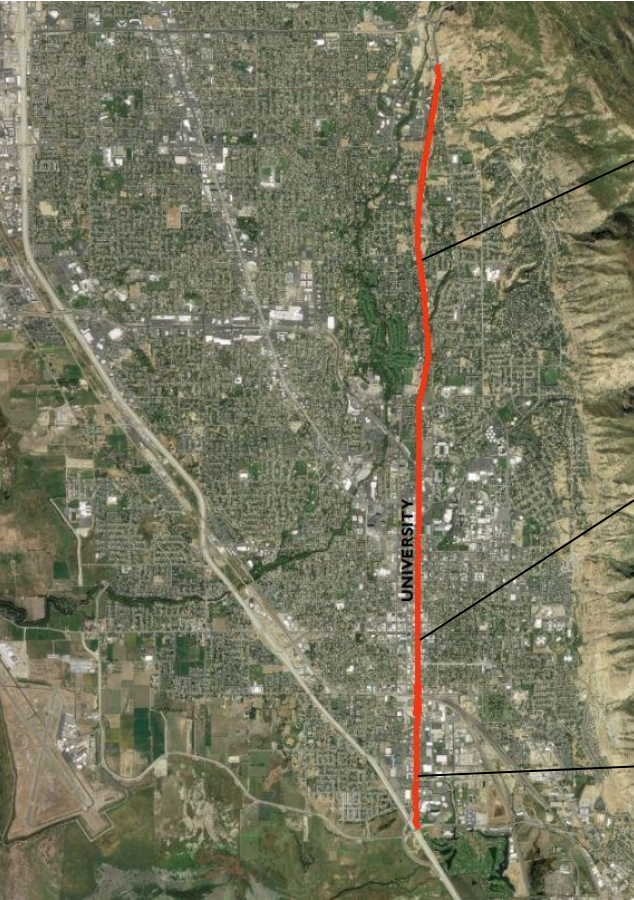
Why street design matters



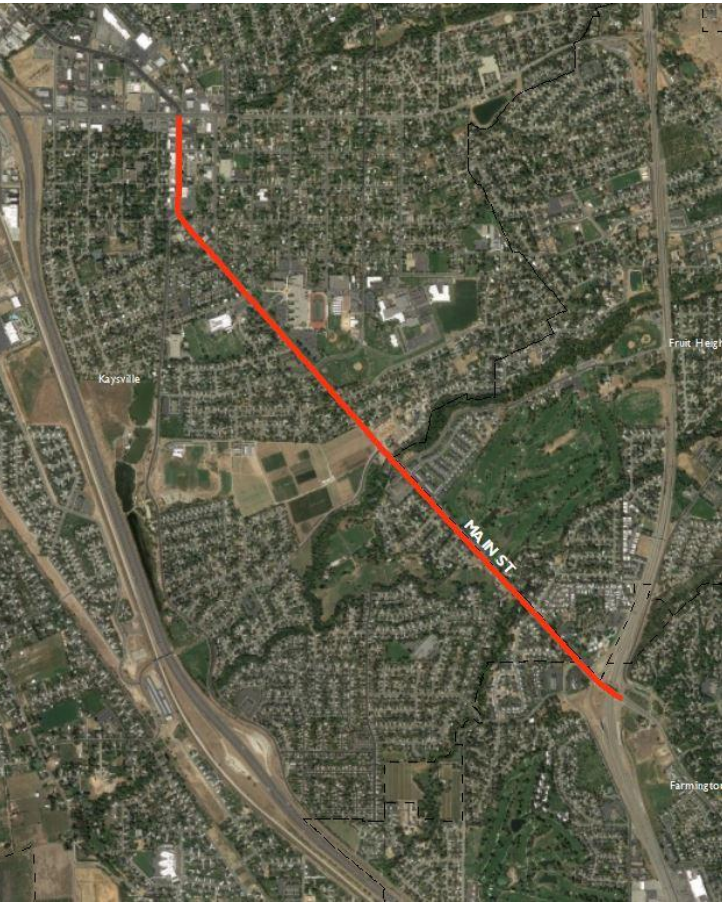
University Avenue, Provo



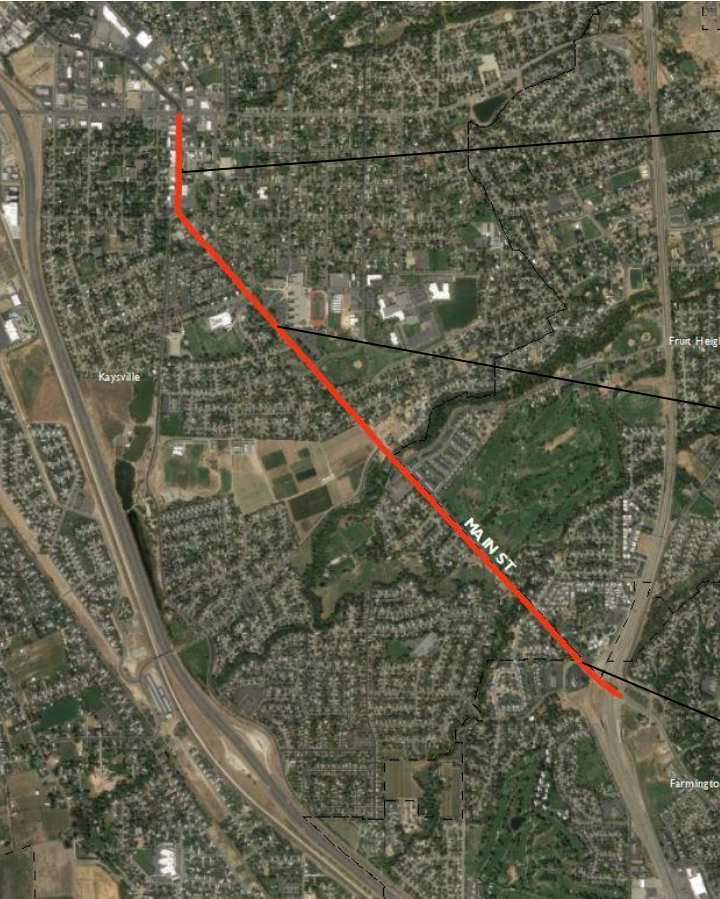
University Avenue, Provo

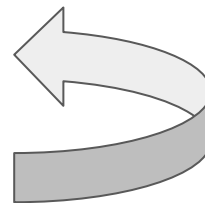
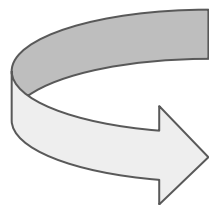


Main Street, Kaysville



Main Street, Kaysville







Question #1

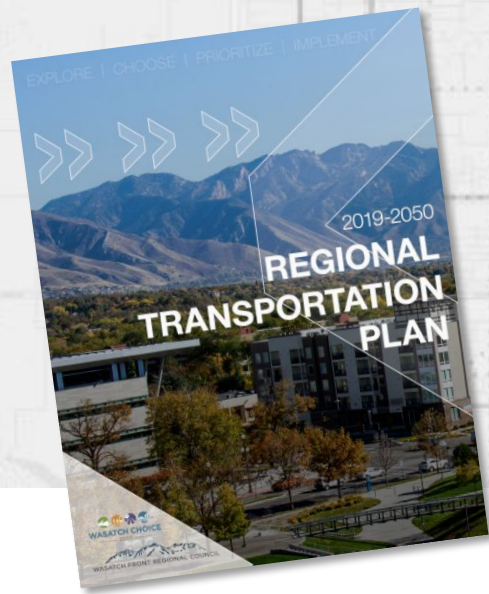
Poll: Can you think of roadways in your community where modifications would better fit the community's context?

1. Yes
2. No
3. Not sure

Question #2

Poll: Should WFRC increase efforts to work with you and partners to improve the fit between streets and their community context?

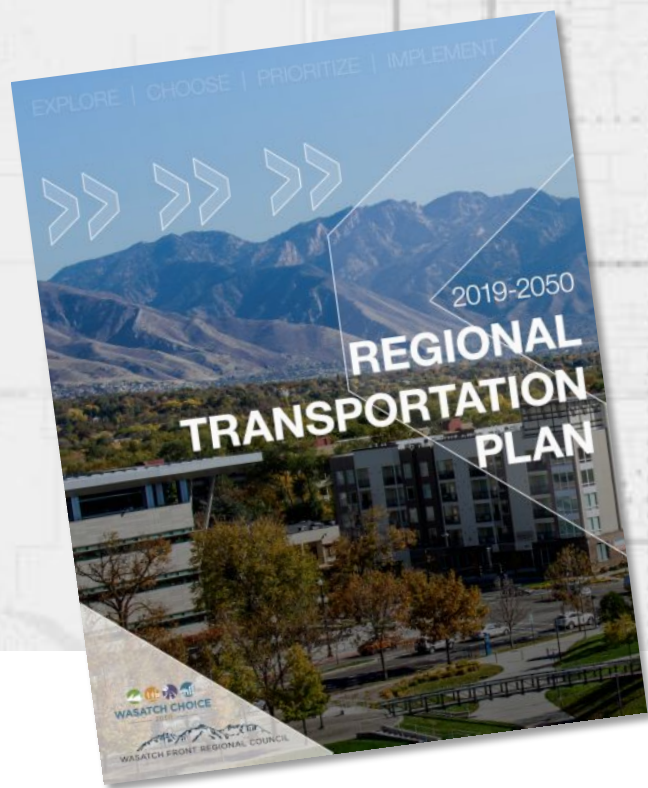
1. Not important, don't spend your time
2. I have significant concerns about increasing these efforts
3. Although I have concerns it makes sense to explore further
4. Yes, this is an important issue that warrants more attention
5. This should be a high priority of WFRC/ partner's work



2023-2050 RTP Update: Needs-Based Phasing Criteria and Local Context for Regional Projects

Regional Growth Committee // January 20, 2022





RTP Amendment Process Update

Regional Growth Committee // January 20, 2022

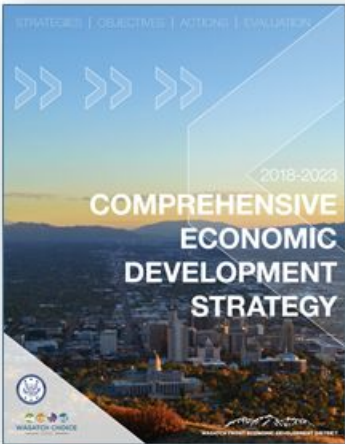


Wasatch Choice Vision



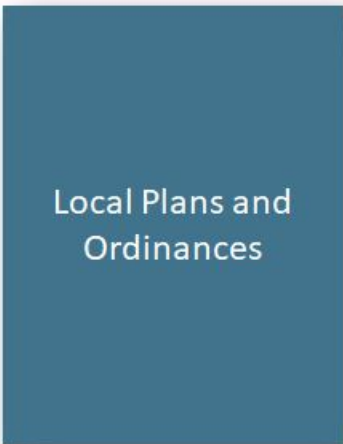
Economic Development

Comprehensive
Economic Development
Strategy



Land Use

Transportation
and Land Use
Connection



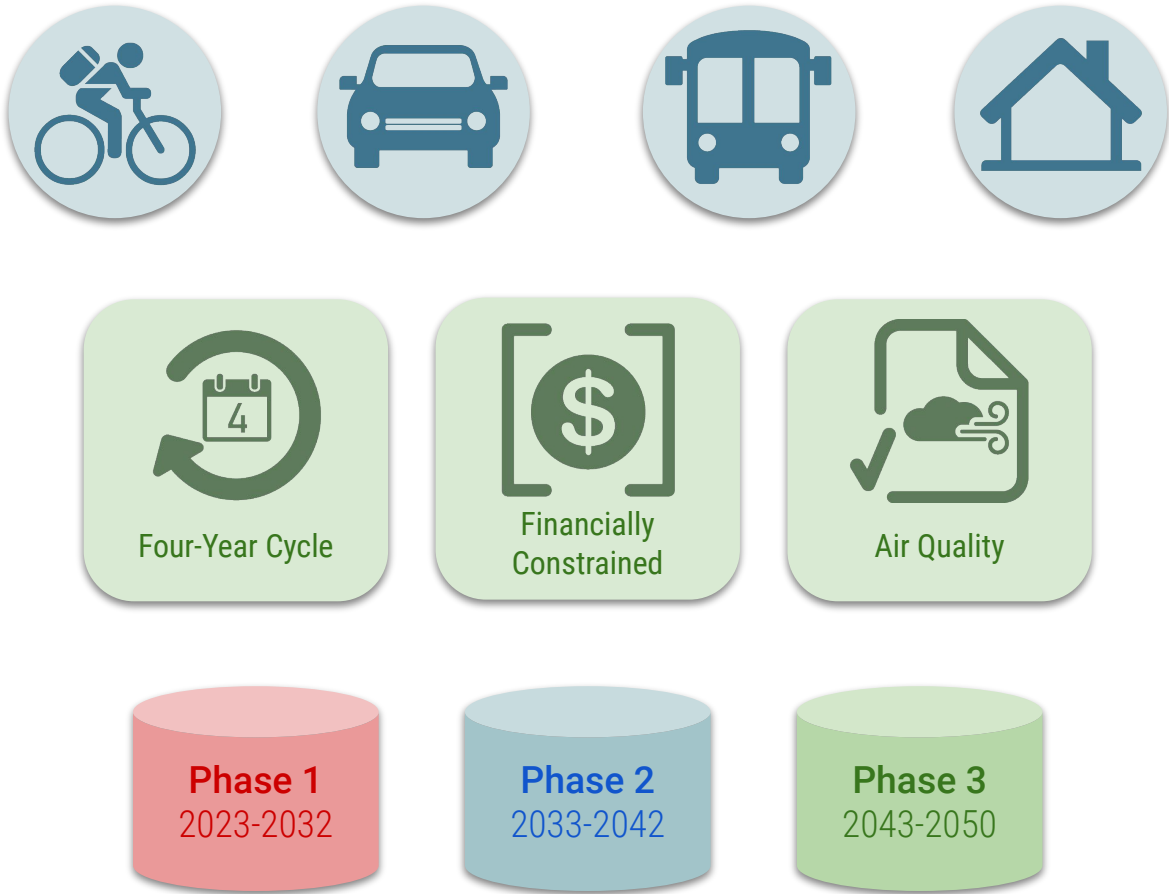
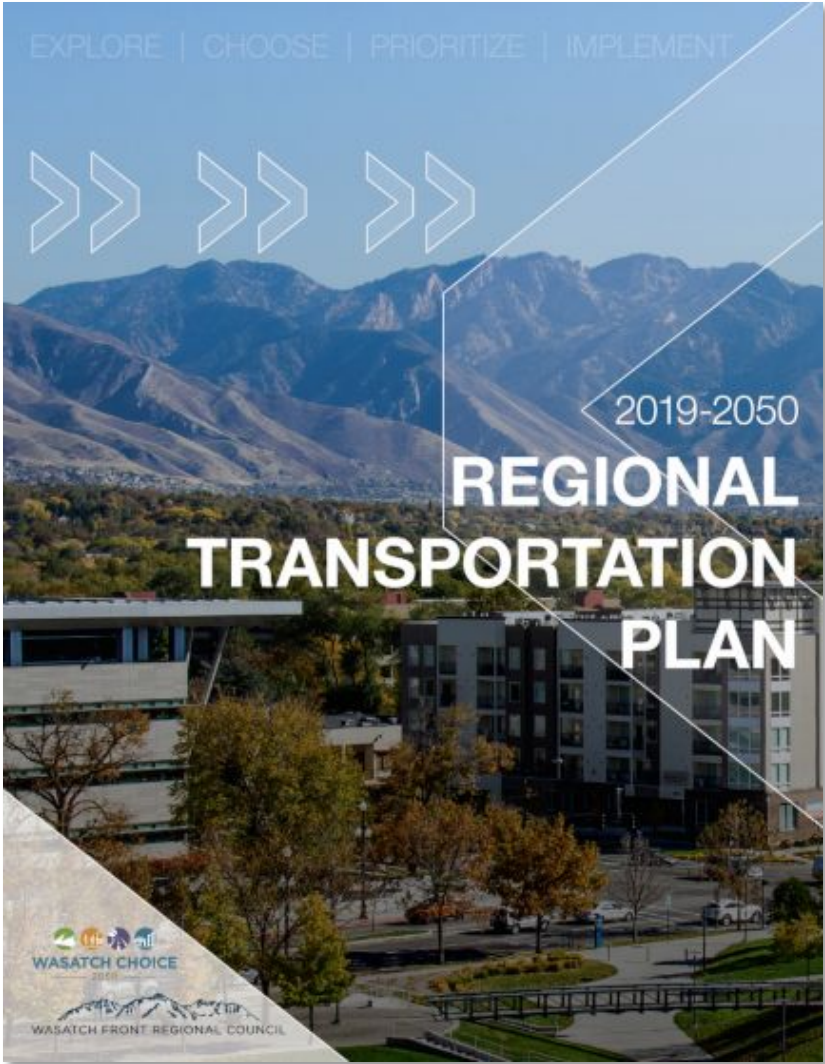
Transportation

Regional
Transportation
Plan



-  Livable and healthy communities
-  Access to economic and educational opportunities
-  Manageable and reliable traffic conditions
-  Quality transportation choices
-  Safe, user friendly streets
-  Clean air
-  Housing choices and affordable living expenses
-  Fiscally responsible communities and infrastructure
-  Sustainable environment
-  Ample open space and recreational opportunities

Regional Transportation Plan Overview



Amendment Process Update

Amendment Process Overview

March 2020 Revision

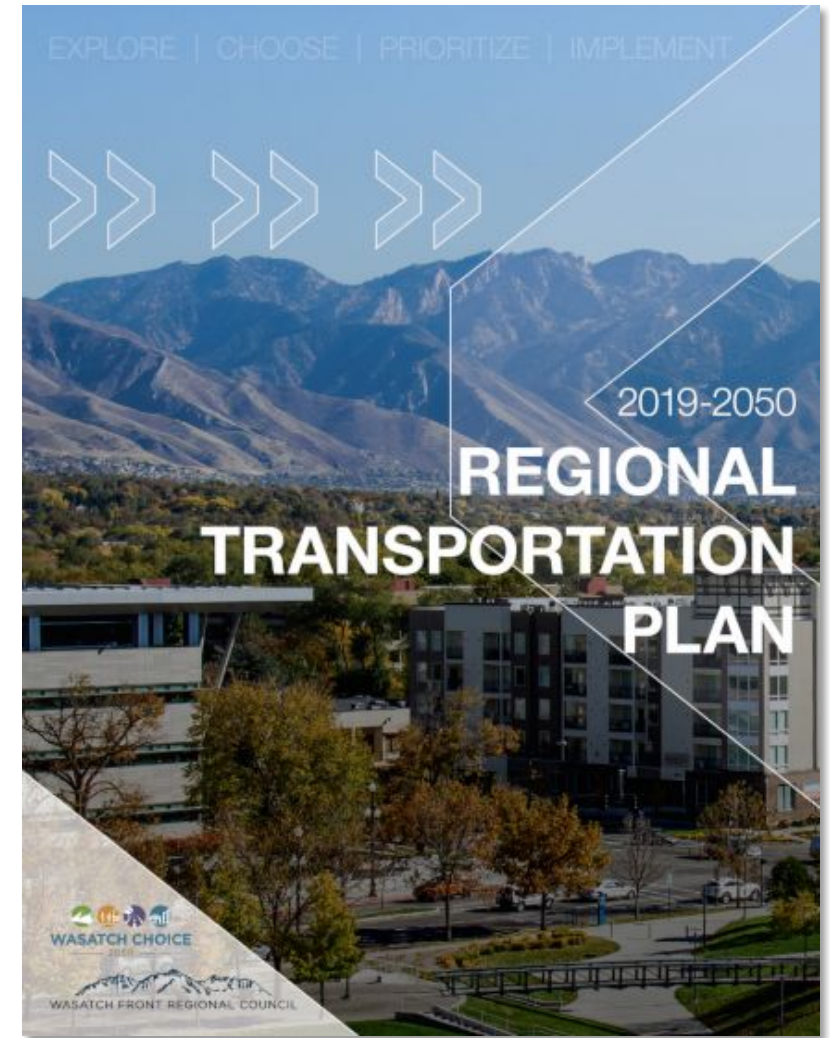
- Streamlined
- Project recategorized
- Delegate approval responsibility
- Inclusion of additional projects

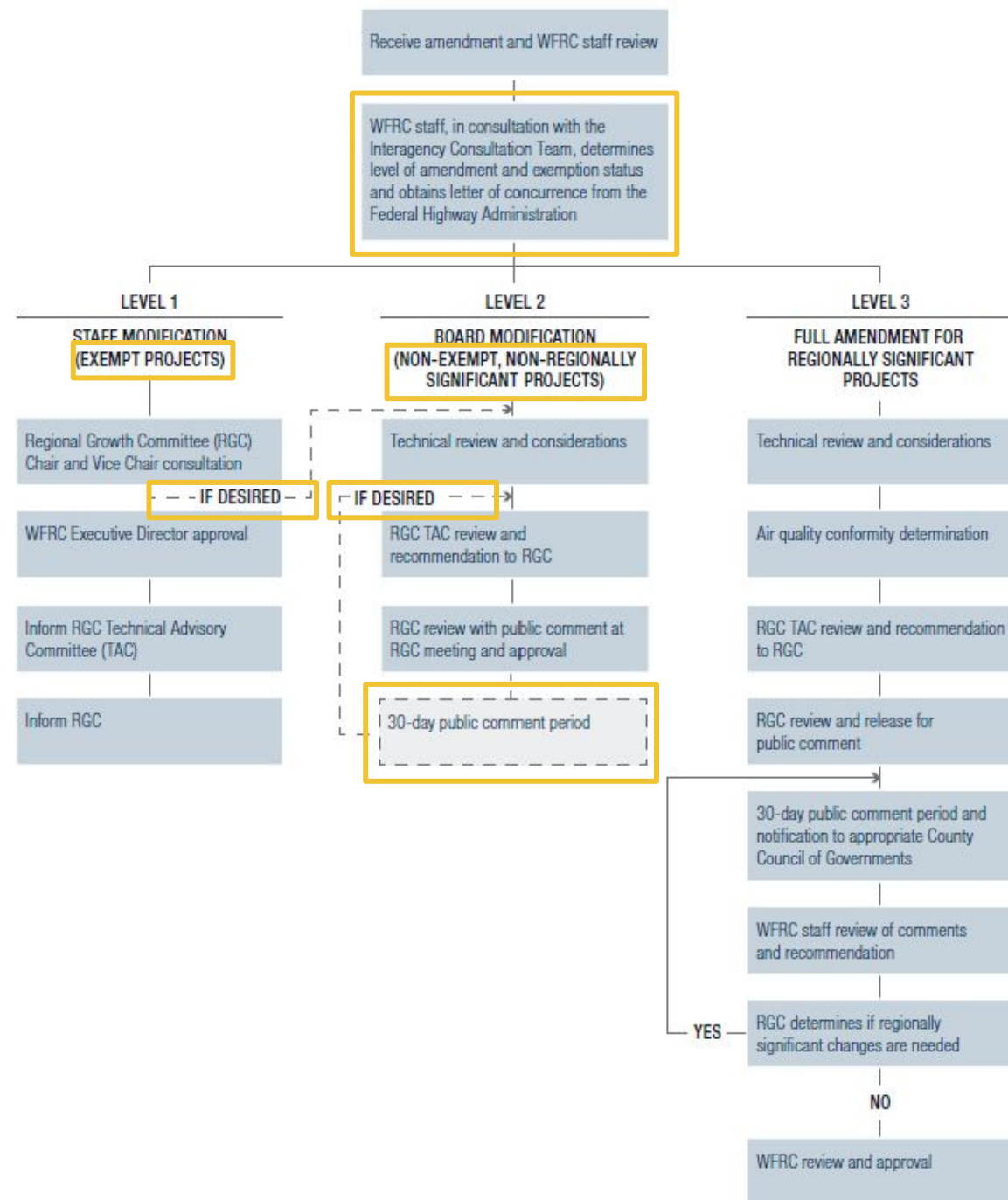
August 2021 Update

- Federal concurrence
- Centers level adjustment

January 2022 Update

- Interagency Consultation Team
- Revisions to align with air quality conformity and emissions analysis



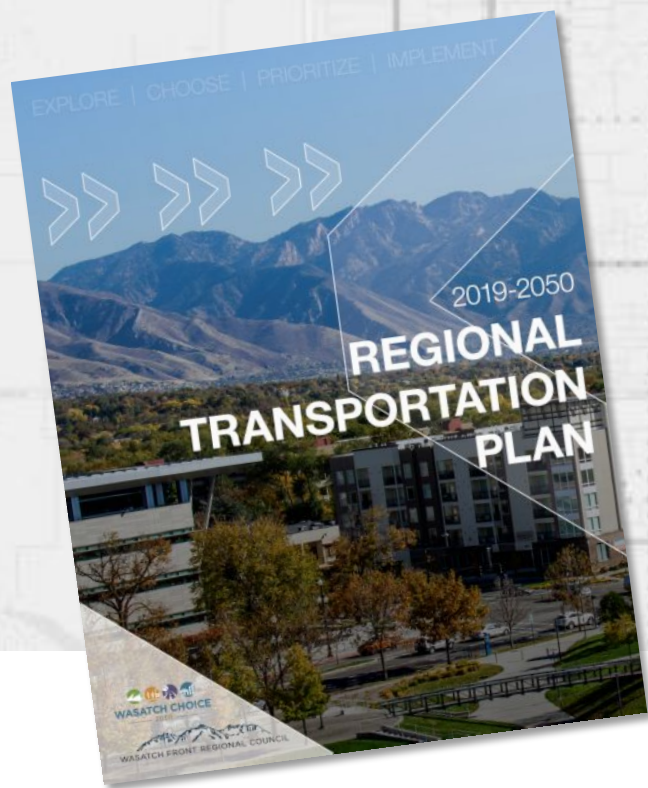


Modification 2

		LEVEL 1 STAFF MODIFICATION (EXEMPT PROJECTS)	LEVEL 2 BOARD MODIFICATION (NON-EXEMPT, NON-REGIONALLY SIGNIFICANT)	LEVEL 3 FULL AMENDMENT (NON-EXEMPT, REGIONALLY SIGNIFICANT)
		Staff or Regional Growth Committee Chair/Vice Chair could recommend elevating to Level 2	Regional Growth Committee could recommend 30-day public comment period	-
Roadway	Ownership change	All ownership changes	-	-
	Functional classification change	-	Collectors and minor arterials	Principal arterials and freeways
	Corridor preservation	-	All corridor preservation projects	-
	Operational projects	Operational projects without modifications to signalized intersections	Operational projects with modifications to signalized intersections	-
	New construction or widening projects	-	Collectors and minor arterials	Principal arterials and freeways, including new intersection and interchanges
Transit	Corridor preservation	-	All corridor preservation projects	-
	New construction, operational, or point projects	-	Non-fixed guideway transit	Fixed guideway transit facilities and stations
Active Transportation		Any active transportation project	-	-
Land Use		Wasatch Choice Vision land use centers	-	-

Proposed Motion to the Regional Council

The WFRC Staff requests that the Regional Growth Committee make a motion to “recommend that the Wasatch Front Regional Council approve the modifications to the process for amending the Regional Transportation Plan.”



RTP Amendment Process Update

Regional Growth Committee // January 20, 2022

