

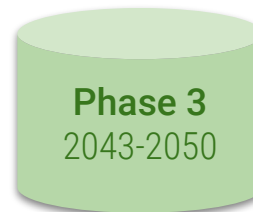


Draft 2030-2050 Regional Transportation Plan

Regional Growth Committee // October 21, 2021

OVERVIEW

Regional Transportation Plan



2023-2050 RTP Objectives



Address disruptions and
uncertainties



Improve fit of the regional vision
with local plans



Explore policies, not just
investments



Support the implementation
of the Vision



Use performance measures
to inform decisions



Engage communities, partner
agencies, stakeholders, and the
public in the planning process

WHERE WE'VE BEEN



Addressing disruptions and uncertainties

EXTERNAL FORCES



COVID-19



CONNECTED &
AUTONOMOUS
VEHICLES



E-COMMERCE
& DELIVERY



ELECTRIC VEHICLE
ADOPTION



FREIGHT
DISRUPTIONS



HIGH-TECH
TRANSIT
SYSTEMS



INTER-REGIONAL
HIGH-SPEED
TRANSIT



MICRO-MOBILITY
& E-BIKES



ON-DEMAND
TRAVEL
& SHARING
SERVICES



PASSENGER
DRONES




TELECOMMUTING


Engage communities, partner agencies, stakeholders, and the public in the planning process

WFR Urban Freight and Local Delivery | Urban Freight and Local Delivery | +

docs.google.com/presentation/d/1p5qgBP6NpPvM4HG4WUp_2mbrW_16CSF2cdvP4UB/edit#slide=id.g6fddc0908f7_d_18



Ned Hacker



Urban Freight and Local Delivery Stakeholder Workshop
August 17, 2021

0:05 / 1:30:12

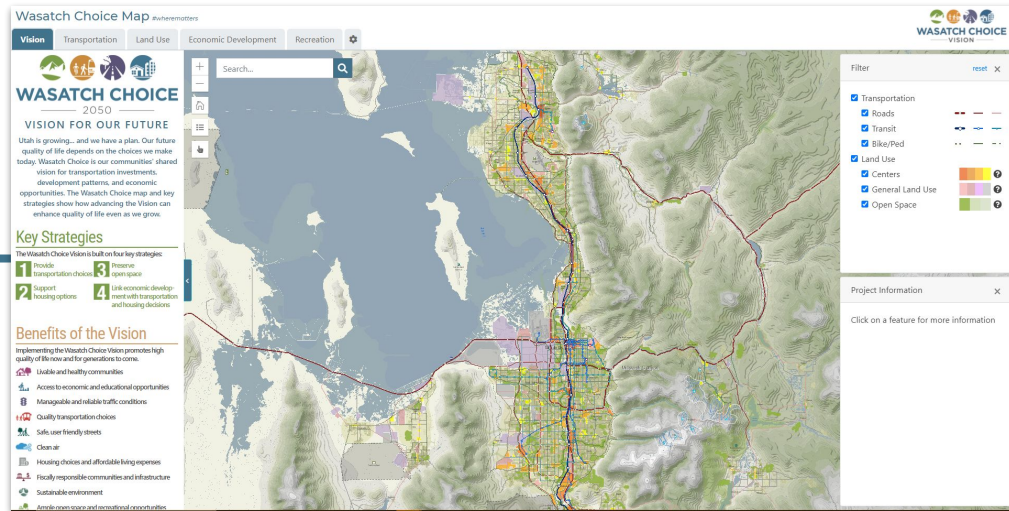
1-6 17 04:00

Improve fit of the regional vision with local plans

Local Vision and Transportation Master Plans



Regional Transportation Plan



WHERE WE ARE TODAY

Wasatch Choice Workshops



Wasatch Choice Workshops

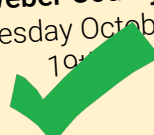
Box Elder County
Tuesday October 12



Southern Weber County
Monday October 1



Northern Weber County
Tuesday October 19



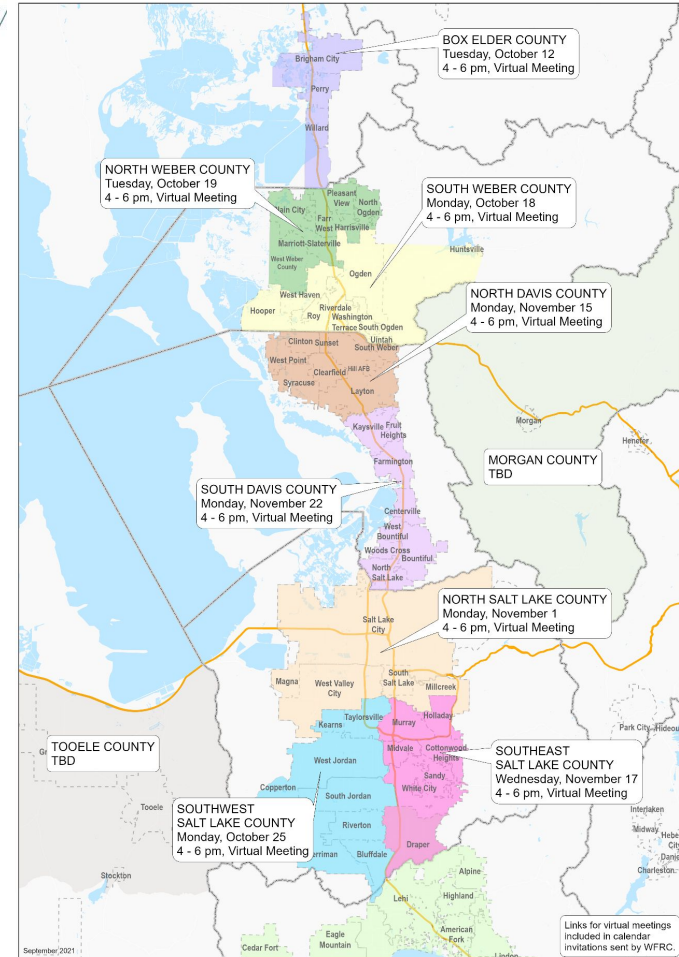
Southwestern Salt Lake County
Monday October 25th

Northern Salt Lake County
Monday November 1st

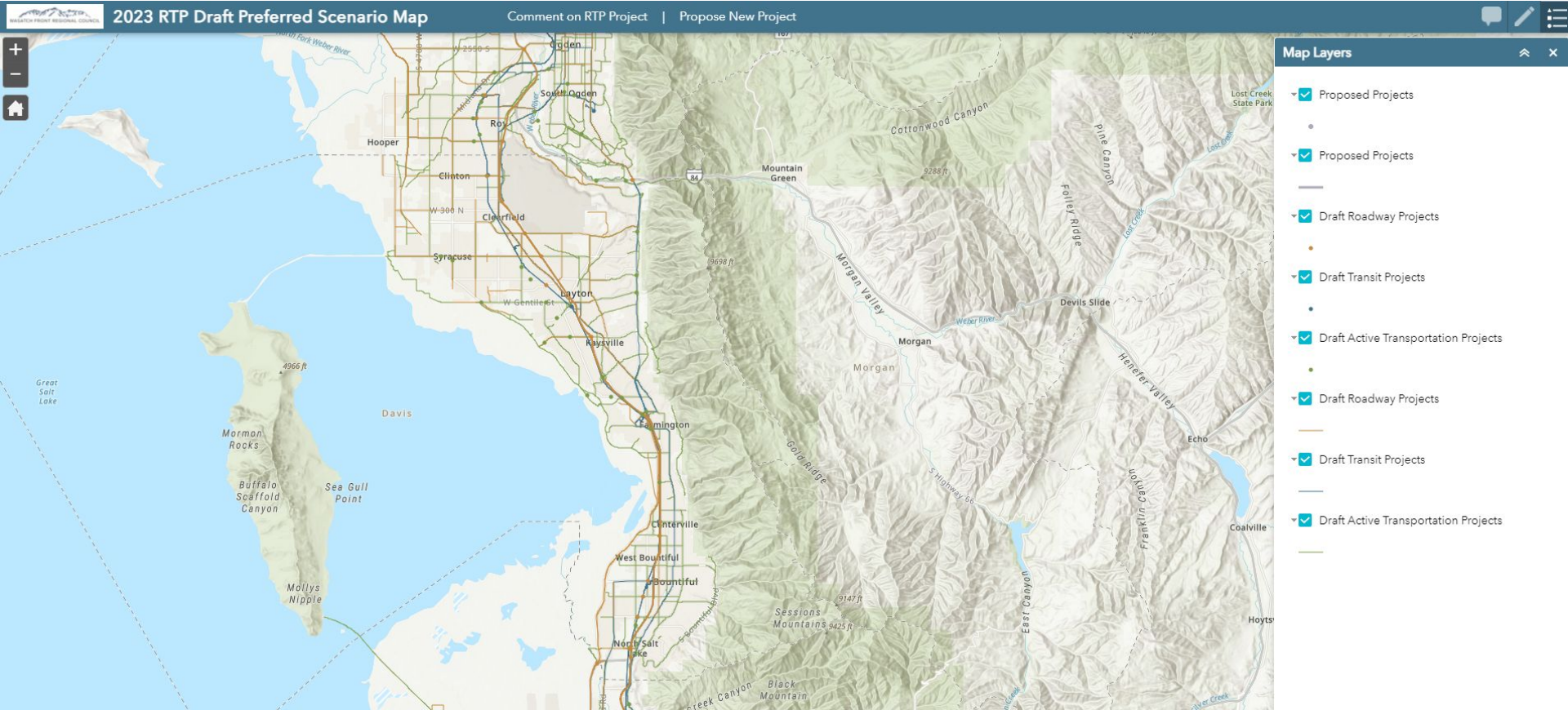
Northern Davis County
Monday November 15th

Southeastern Salt Lake County
Wednesday November 17th

Southern Davis County
Monday November 22nd



<https://wfr.org/rtp-2023-draft-preferred-scenario-map/>



Use performance measures to inform interim decisions

10 Regional Goals



Livable and healthy communities



Access to economic and educational opportunities



Manageable and reliable traffic conditions



Quality transportation choices



Sustainable environment, including water, agricultural, and other natural resources



Safe, user friendly streets



Housing choices and affordable living expenses



Clean air



Ample parks, open spaces, and recreational opportunities



Fiscally responsible communities and infrastructure

Use performance measures to inform interim decisions

ROADS

- Increases connectivity
- Improves traffic conditions
- Improves roadway operations
- Improves freight mobility
- Improves safety
- Preserves a future corridor

TRANSIT

- Meets ridership thresholds
- Improves connectivity of transit system
- Preserves a future corridor
- Connects to Wasatch Choice Centers
- Aligns with UTA Long Range Transit Plan

ACTIVE TRANSPORTATION

- Updated with new Active Transportation Master Plans
- Coordination with UDOT and local communities

Assessing System Performance



Destination Access



Freight Delay



Auto Travel Time



Vehicle Miles Of Travel



Drive Alone To Work Trips



Walk And Bike Trips



Transit Trips



Livable Communities



Equity



Safety



Community Adaptability

NEXT YEAR

Explore policies, not just investments



CONGESTION
PRICING



CURBSIDE
MANAGEMENT



ZERO-FARE
TRANSIT



LOCAL STREET
DESIGN
MODIFICATIONS



MANAGED LANES



PARKING
MODERNIZATION



ROAD USAGE
CHARGE



STREET
CONNECTIVITY



TRANSIT
PRIORITY



CENTERED
DEVELOPMENT

A Look Ahead to 2022



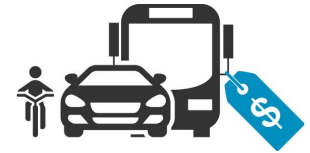
1 Refining
population and
employment
projections



2 Needs-based
phasing



3 Financial
projections



4 Financially
constrained
phasing

Schedule



- ★ RGC TAC Meetings
- ★ RGC Meetings



Draft 2030-2050 Regional Transportation Plan

Regional Growth Committee // October 21, 2021