

2019-2050 RTP: Amendment 1

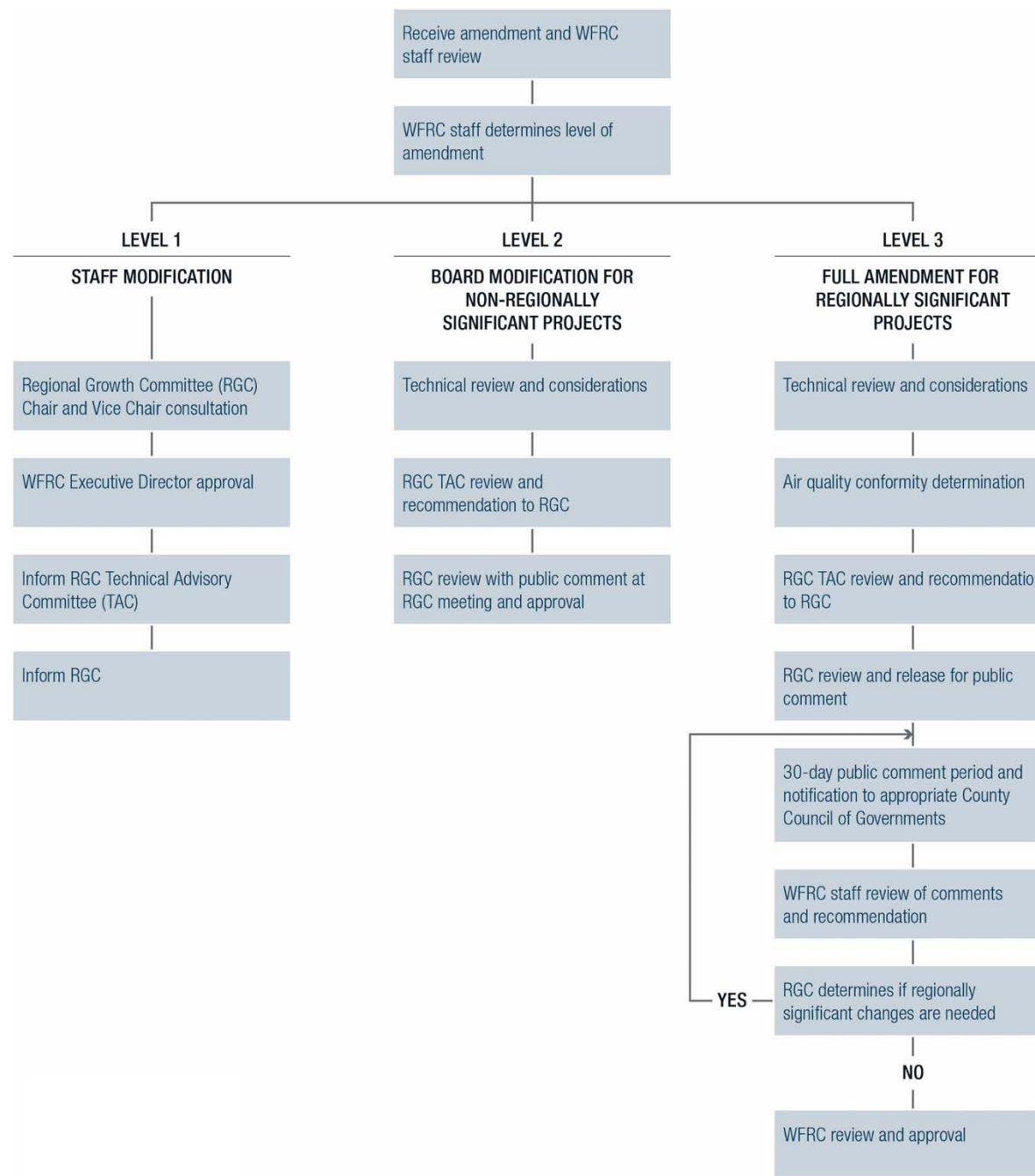
RGC // May 21, 2020



RTP and Amendment Process Overview

- RTP is updated every four years
 - Recently adopted in May 2019
- Periodic adjustments are needed between adoption cycles
- WFRC's RTP amendment process
 - Financial constraints
 - Public review and input
 - Modeling and air quality conformity





		LEVEL 1 STAFF MODIFICATION	LEVEL 2 BOARD MODIFICATION	LEVEL 3 FULL AMENDMENT
		Staff or Regional Growth Committee Chair/Vice Chair could recommend elevating to Level 2	Regional Growth Committee could recommend 30-day public comment period	-
Roadway	Ownership change	All ownership changes	-	-
	Corridor preservation	All corridor preservation projects	-	-
	Operational projects	Collectors and minor arterials	Principal arterial and freeways	-
	New construction or widening projects	Collectors and minor arterials, less than \$10 Million	Collectors and minor arterials, \$10 Million or more	Principal arterials and freeways
Transit	Corridor preservation	All corridor preservation projects	-	-
	New construction, operational, or point projects	Core route and express bus, less than \$5 Million	Core route and express bus, \$5 Million or more	Fixed guideway and bus rapid transit
Active Transportation		Individual active transportation facilities	Full city-wide active transportation plan updates	-
Land Use		-	Wasatch Choice 2050 land use centers	-

Level 1 Amendments

4000 North

Level 1 Request

Farr West

SCOPE

Operational project, including sidewalks, shoulders, and a turning lane, from 3900 West to SR-126.

New project to the RTP - Phase 1.

COST

\$4.4 Million

FUNDING SOURCES

This project has approved WACOG funding pending amendment.

BENEFITS

Provides safe routes to school for Remuda Elementary School.

Provides access to SR-126, the new Smith Family Park, and a future commercial development area.



900 East

Level 1 Request

Millcreek

SCOPE

Operational project, including active transportation facilities, from 3900 South to 4500 South.

New project to the RTP - Phase 1.

COST

\$7.2 Million

FUNDING SOURCES

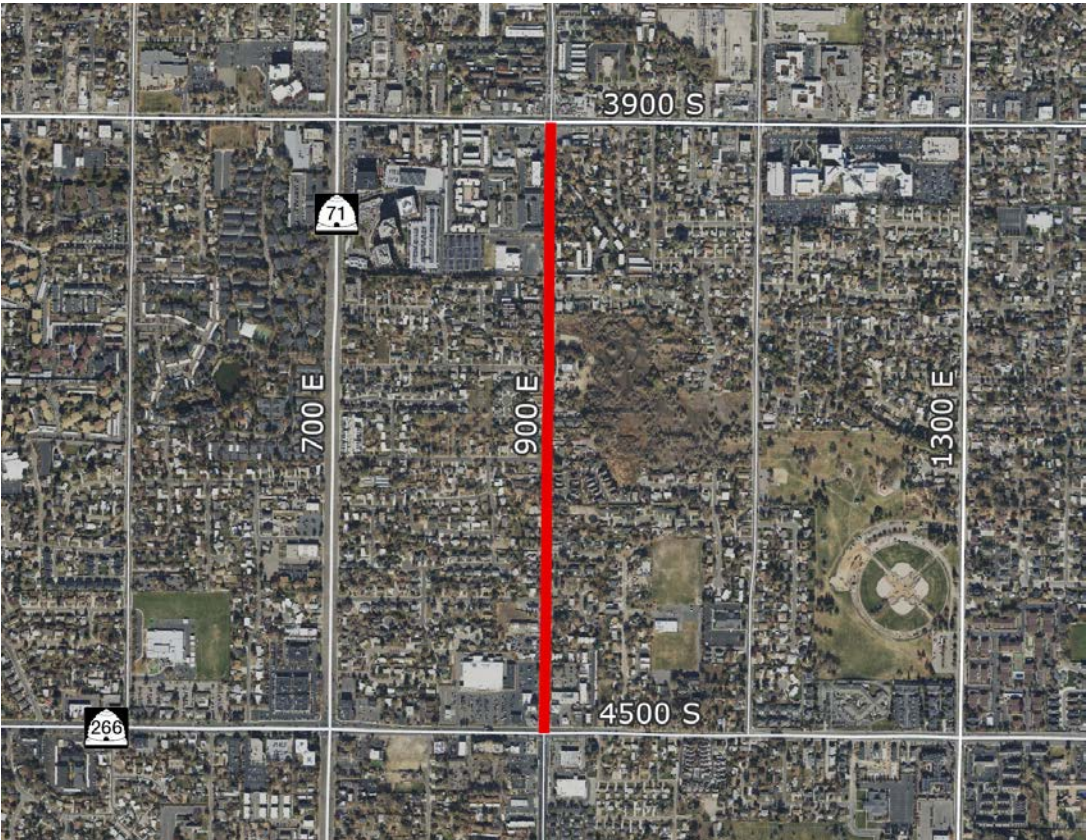
Partial funding from STP funds.
Potential corridor funds.

BENEFITS

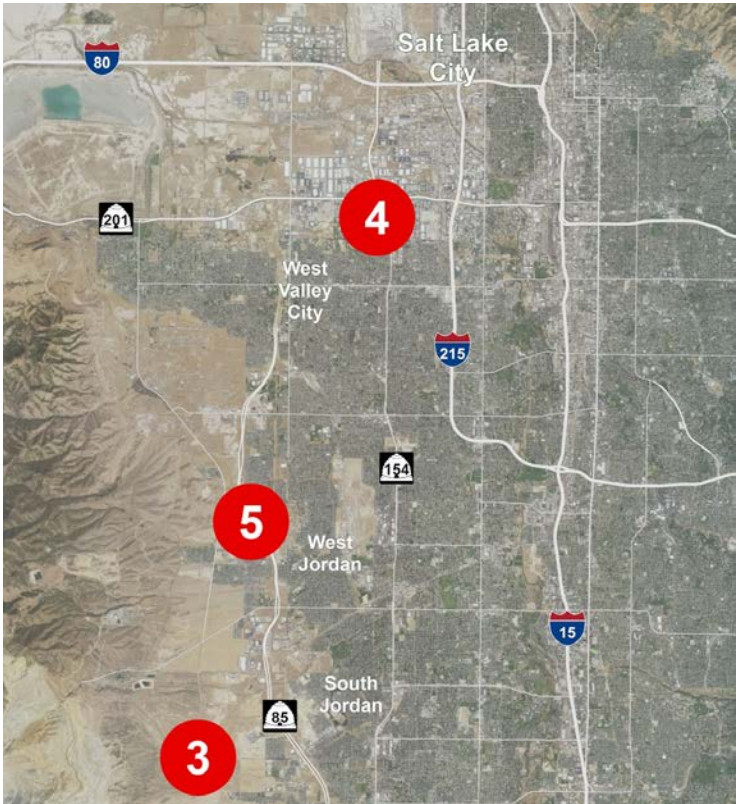
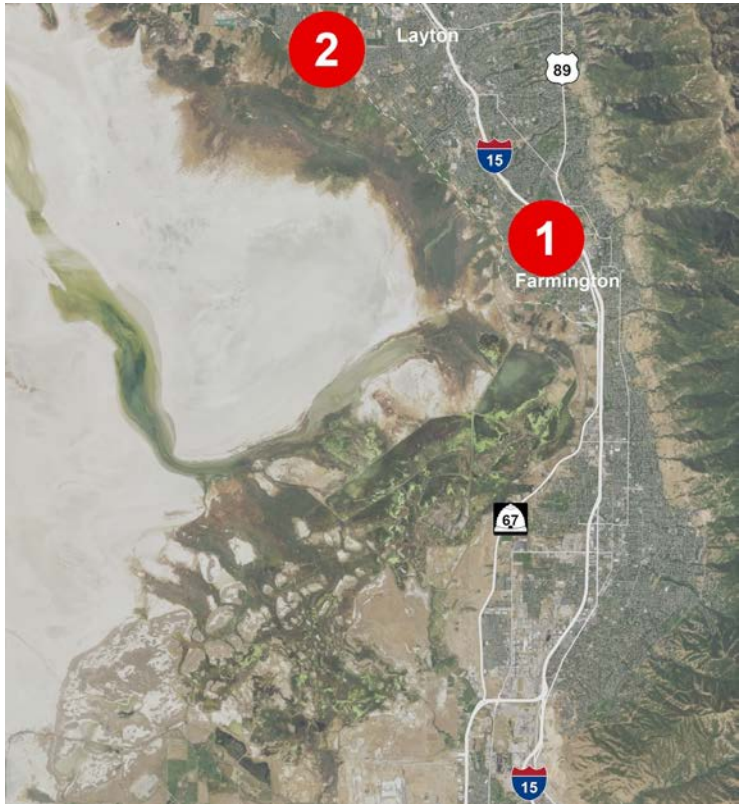
Includes construction of curb, gutter, sidewalk, ADA ramps, and a bicycle facility.

Improves safety.

Relocates utility poles out of asphalt.



Level 2 Amendments



Commerce Drive

Level 2 Request

Farmington

SCOPE

New construction of an arterial from Shepard Lane to Park Lane.

New project to the RTP - Phase 1.

COST

\$21.8 Million

FUNDING SOURCES

Potential funding sources include RDA funds, TRZ funds, impact fees, appropriations, and STP funds.

BENEFITS

Increases street connectivity and provides access in the new development portion of the Station Park/North Station Urban Center.

Provides connection between Park Lane and Shepard Lane Interchanges.



West Davis Business Center

Level 2 Request

Layton

SCOPE

New Business Center between 2700 West, Gentile Street, and the West Davis Corridor.

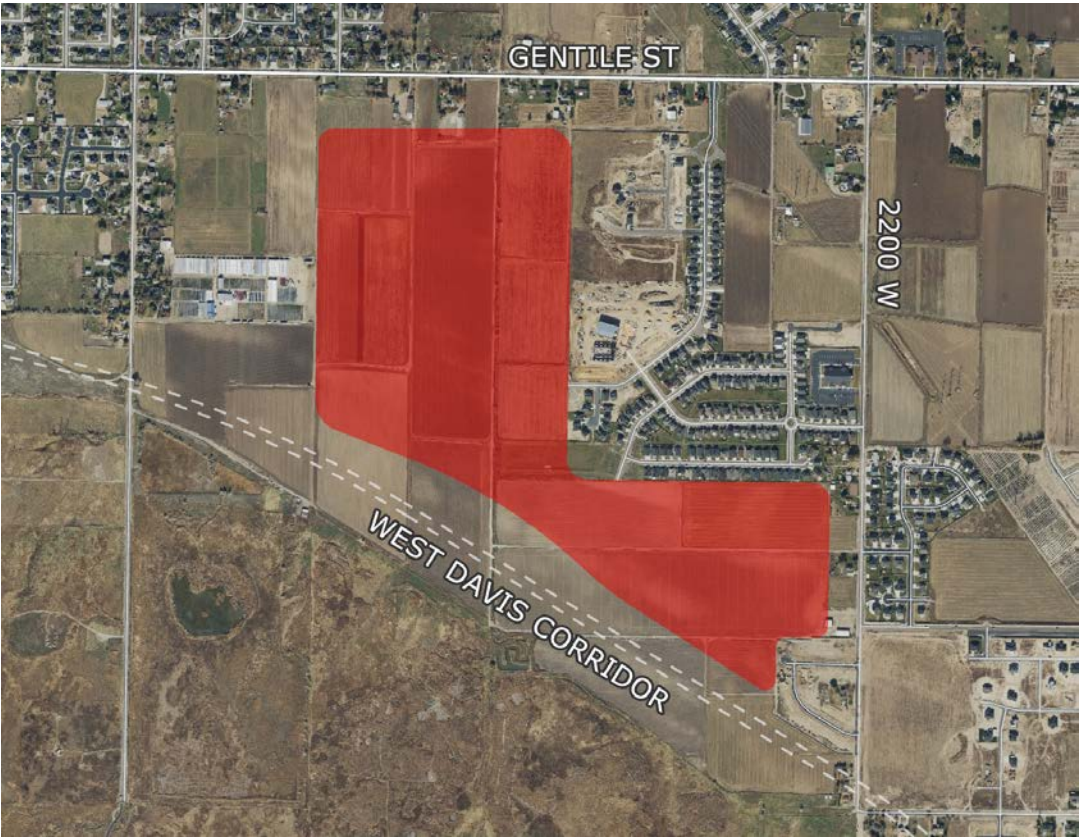
New center to the RTP - Phase 1.

BENEFITS

New job center located adjacent to West Davis Corridor interchange.

Increases employment locations within Davis County, increasing access to opportunities and reducing commute times.

Ensures consistency between Layton Forward and the Wasatch Choice Regional Vision.



7300 West

Level 2 Request

Salt Lake County

SCOPE

New construction from Bacchus Hwy to 12600 South.

New project to the RTP - Phase 1.

COST

\$36.4 Million

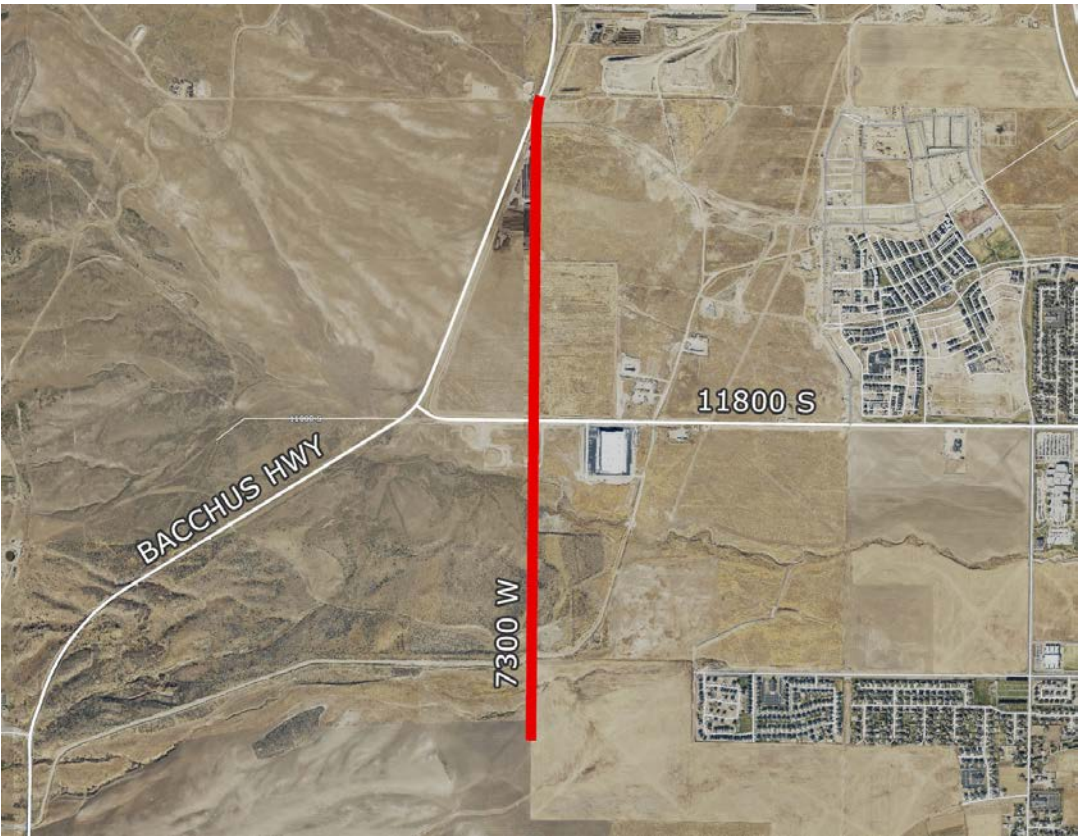
FUNDING SOURCES

Potential corridor preservation and STP funds.

BENEFITS

Improves street connectivity and network capacity in developing area.

Provides access for economic development.



Bangerter Highway One-Way Frontage Road System

Level 2 Request

UDOT

SCOPE

New one-way frontage roads along Bangerter Highway between California Avenue and 3500 South.

Redefine the project from C-D System to One-Way Frontage Road System and change limits.

Modified project – Phase 1.

COST

\$131.7 Million

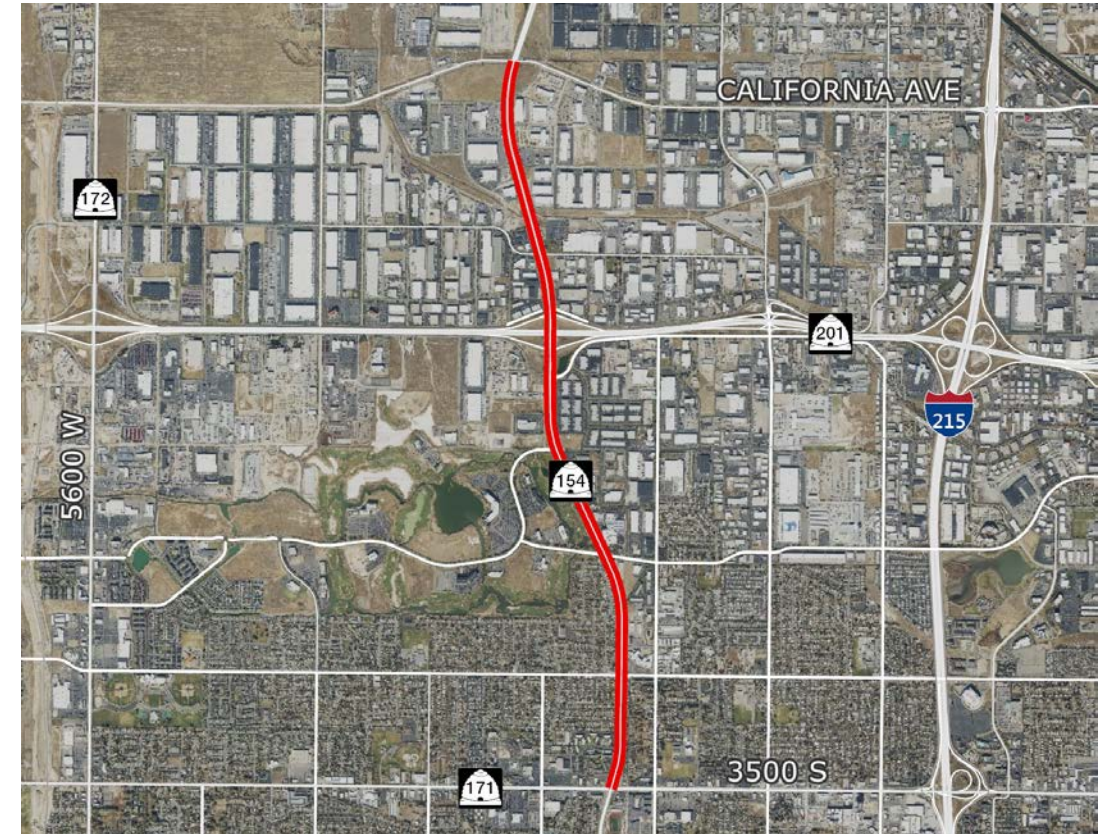
FUNDING SOURCES

Potential TIF.

BENEFITS

Provides improved access to existing industrial center, employment district, and city center.

Provides congestion relief for Bangerter Highway.



7000 South, 7400 South, and 8600 South

Level 2 Request

West Jordan City

SCOPE

New construction of three new roads between SR-111 and 5600 West, providing connectivity over Mountain View Corridor.

New projects to the RTP - Phase 1.

COST

\$75 Million (\$25 Million per project)

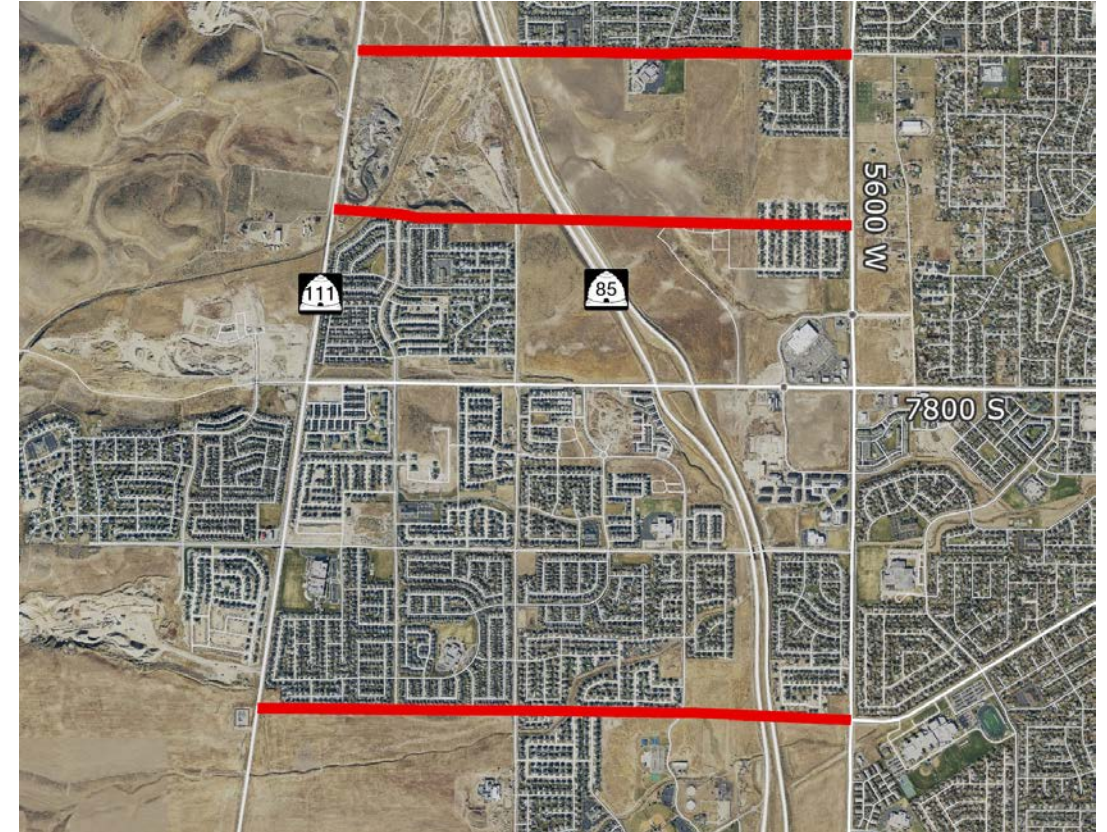
FUNDING SOURCES

Possible local and state funds.

BENEFITS

Improves local street connectivity, east-west access, emergency response times, access to City parks and trails, and access to the future recreation center in Ron Wood Park along 8600 South.






Provides for three additional grade-separated crossings of Mountain View Corridor.

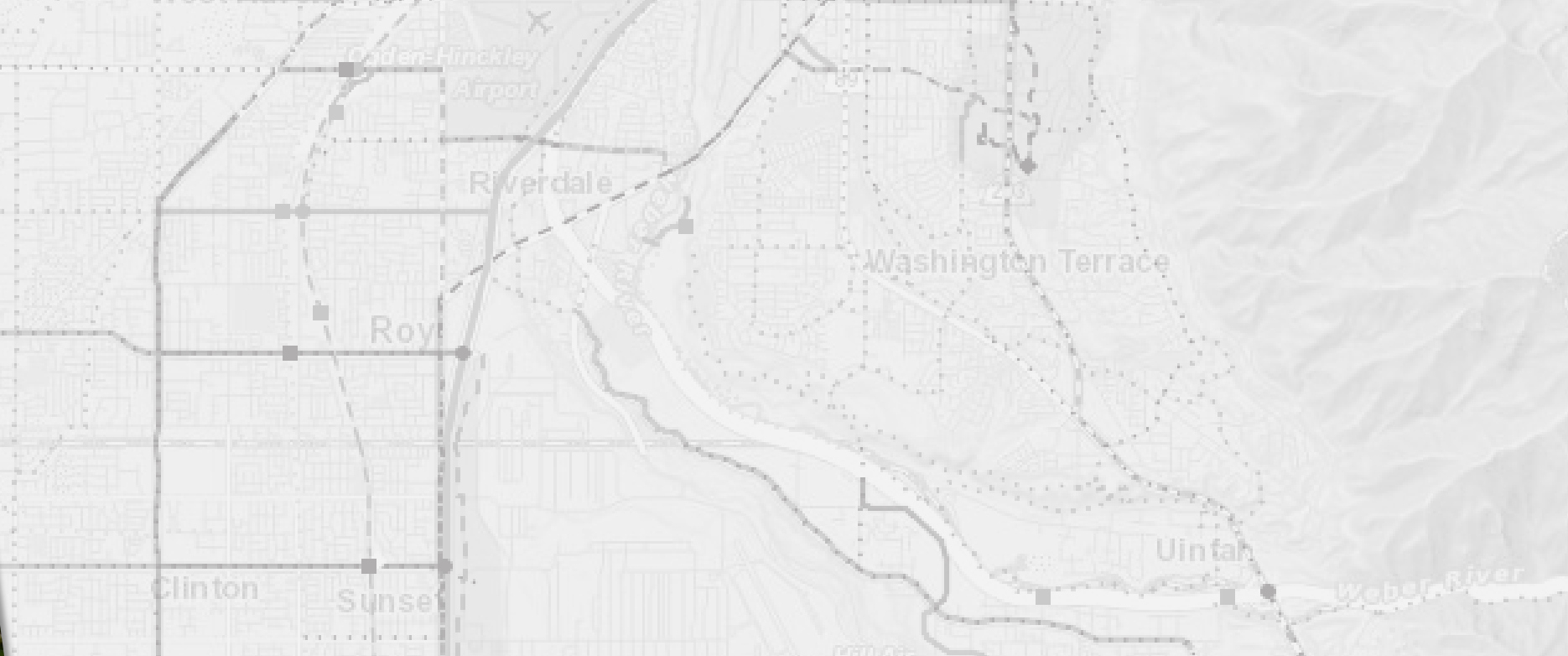
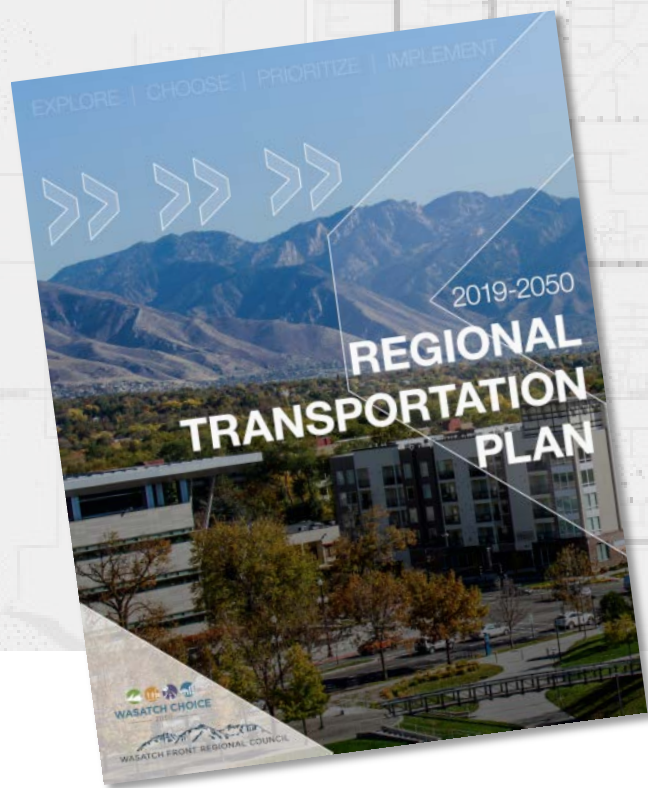


Technical Considerations

A decorative horizontal band at the bottom of the slide, filled with a dense pattern of diagonal lines.

Technical Considerations for Level 2 Requests

TECHNICAL CONSIDERATION		COMMERCE DRIVE FARMINGTON	7300 WEST SALT LAKE COUNTY	BANGERTEY HIGHWAY ONE-WAY FRONTAGE ROAD SYSTEM UDOT	7000 SOUTH WEST JORDAN CITY	7400 SOUTH WEST JORDAN CITY	8600 SOUTH WEST JORDAN CITY
	Safety Index (1 (most safe) to 10 (least safe))	6	4	5.5	1	1	1
	Vehicle Hours Traveled	NB 26,993 VHT Build 27,003 VHT +10 VHT	NB 10,753 VHT Build 10,740 VHT -62 VHT	NB 51,773 VHT Build 51,150 VHT -623 VHT	NB 18,258 VHT Build 18,547 VHT +289 VHT	NB 18,189 VHT Build 18,416 VHT +227 VHT	NB 18,486 VHT Build 18,888 VHT +402 VHT
	Increases Connectivity	Connects Shepard Lane to Park Lane.	Connects Bacchus Highway with 12600 South.	Provides connectivity to local land use and redundancy along Bangerter Highway.	Connects SR-111 to 5600 and provides crossing over Mountain View Corridor.	Connects SR-111 to 5600 and provides crossing over Mountain View Corridor.	Connects SR-111 to 5600 and provides crossing over Mountain View Corridor.
	Project Readiness	Aligns with Farmington Master Plan. Preliminary engineering. Some right-of way will need to be acquired.	Part of planning studies for SW SLCo. Preliminary engineering. Some right-of way will need to be acquired.	Is in concept stage. Some right-of way will need to be acquired. Environmental review will need to be completed.	Aligns with West Jordan City Master Plan. No engineering completed to date. Some right-of way will need to be acquired.	Aligns with West Jordan City Master Plan. No engineering completed to date. Some right-of way will need to be acquired.	Aligns with West Jordan City Master Plan. No engineering completed to date. Some right-of way will need to be acquired.
	Supports Wasatch Choice Regional Vision	Supports Station Park/North Station (Urban Center).	Supports an Employment District and Olympia Hills (City Center).	Supports the SLC NW Quadrant (Industrial District), Lake Park Center (Employment District), and 3500 South (City Center).	No identified centers.	No identified centers.	No identified centers.



2019-2050 RTP: Amendment 1

RGC // May 21, 2020