



# WFRC New Member Orientation

February 22, 2024 // [wfrc.org](https://wfrc.org)

# Organization and Membership

## Mission



The Wasatch Front Regional Council builds consensus and enhances quality of life by developing and implementing visions and plans for a well-functioning multi-modal transportation system, livable communities, a strong economy, and a healthy environment.

## Roles



### Convener

We facilitate collaboration with our communities and partners.



### Technical Expert

We are trusted subject-matter experts.



### Planner

We proactively plan for the future of our region.

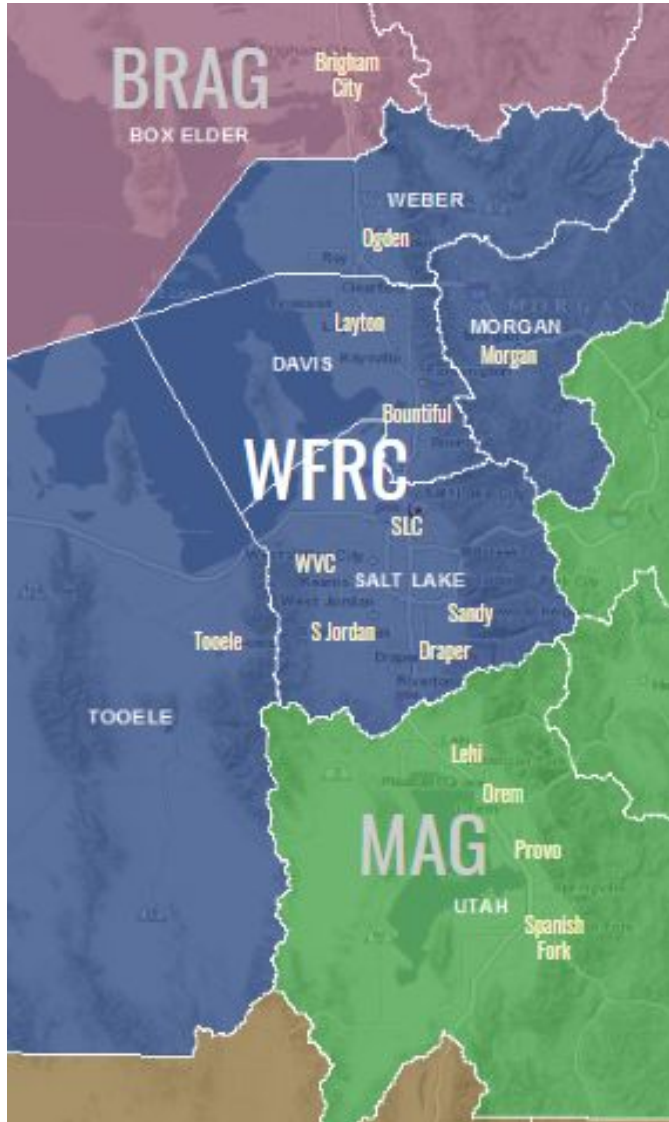


### Implementer

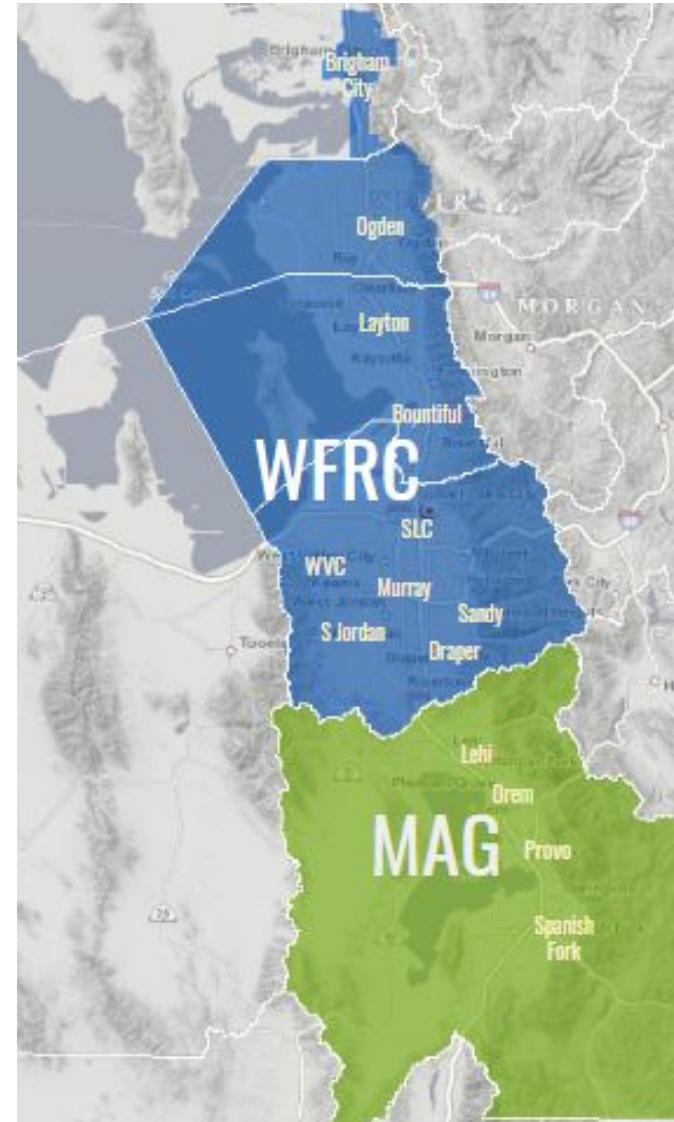
We put visions and plans into action.

# WFRC Association of Governments and Metropolitan Planning Organization

as  
AOG

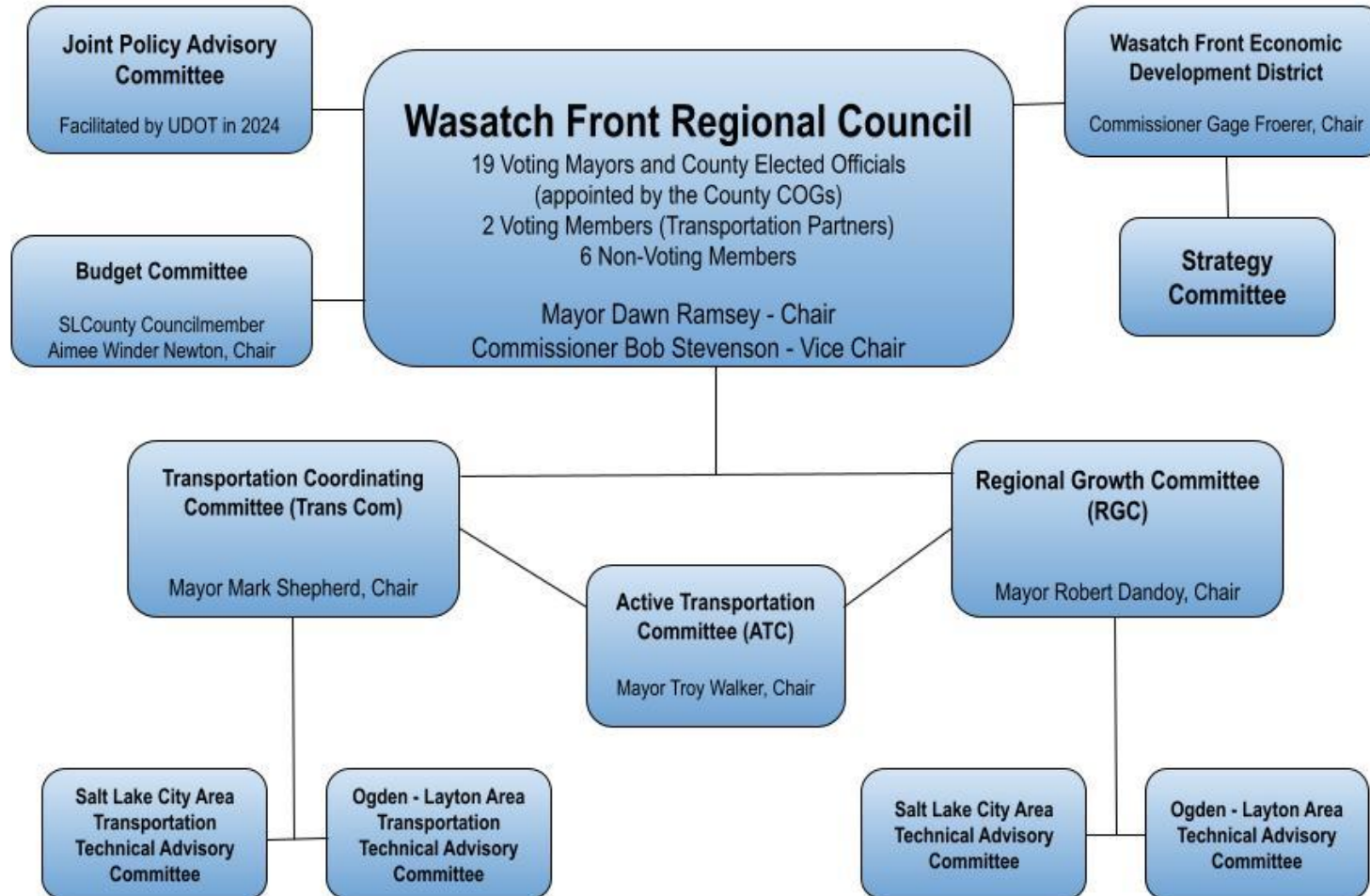


as  
MPO



# 2024 WFRC Committee Structure

## 2024 WFRC Committee Structure



# Leadership and External Affairs



**ANDREW GRUBER**  
Executive Director



**TED KNOWLTON**  
Deputy Director



**MIRANDA JONES COX**  
Governmental Affairs Manager



**NATE CURREY**  
Communications Manager



**MADISON AVILES**  
Local Administrative Advisor

# Organizational Operations Team



**MARIAN FLORENCE**  
Chief Financial Officer



**KEVRINE WELLS**  
Accounting Specialist/  
Human Resources Manager



**ANDREA PEARSON**  
Sr. Executive Assistant,  
Compliance & Procurement



**ROSIE HERNANDEZ**  
Executive Assistant &  
Community Outreach



**JORDON CHANDLER**  
Office Administrator



# WASATCH CHOICE

## — VISION —

*Utah is growing . . . and we have a plan!*



WASATCH FRONT REGIONAL COUNCIL



[Goals & Strategies](#)

[Tools & Resources](#) ▾

[Case Studies](#)

[Partners](#)

[Wasatch Choice Map](#)







[Goals & Strategies](#)

[Tools & Resources](#) ▾

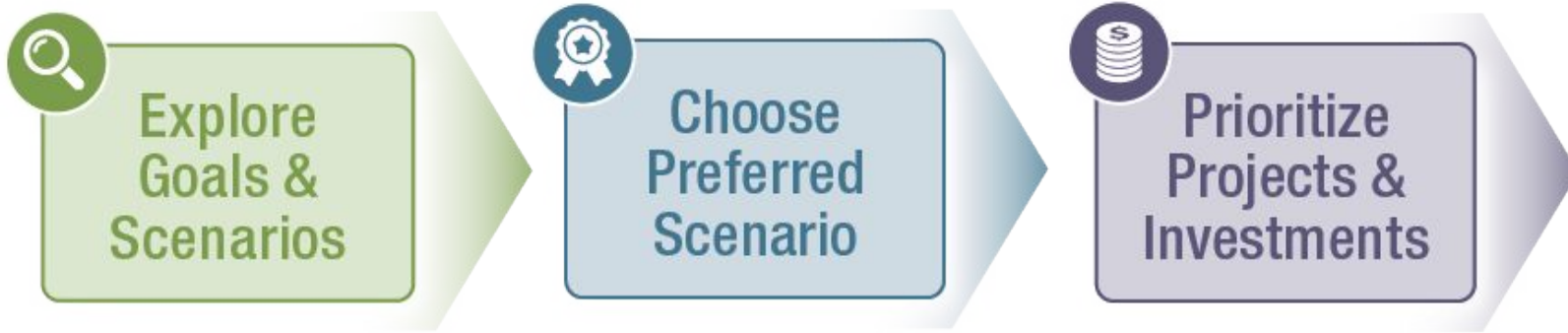
[Case Studies](#)

[Partners](#)

[Wasatch Choice Map](#)



# Collaboratively Developed with You



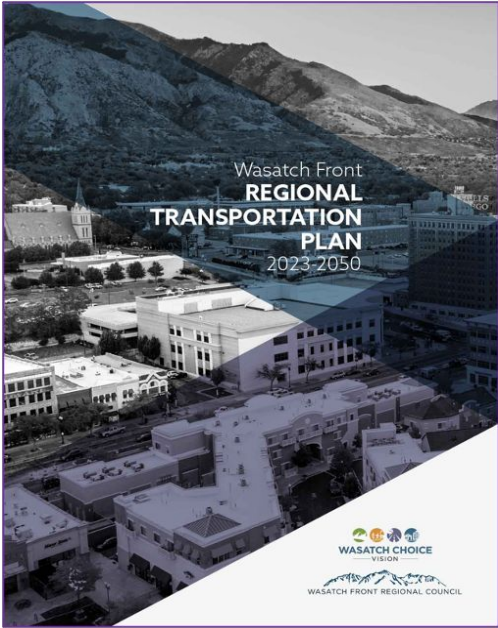


# WASATCH CHOICE

— VISION —

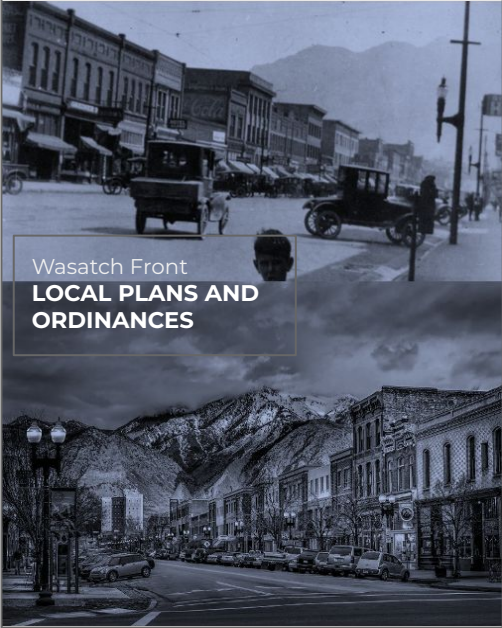
## Transportation

Regional Transportation Plan



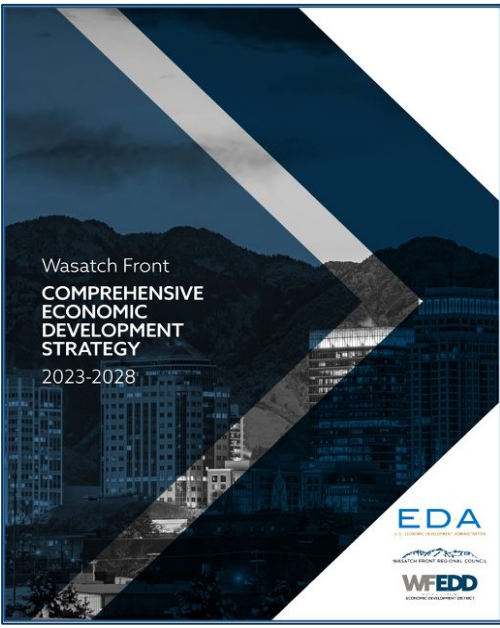
## Land Use

Transportation & Land Use Connection



## Economic Development

Comprehensive Economic Development Strategy



# Wasatch Choice Vision key strategies for a thriving region and communities:



## Transportation Choices

Provide people with real choices in how they get around - by driving, transit, biking and walking - so people can easily reach their destinations.



## Housing Options

Support housing types and locations that meet the needs of all residents.



## Parks & Public Spaces

Ensure ample and convenient parks, public spaces, and open land for gathering and recreating.



## City & Town Centers

Create and enhance city and town centers as the hearts of our communities – walkable areas where activity is focused, with places to live, work and play.

# Wasatch Choice Map #wherematters

- Vision
- Transportation
- Centers & Land Uses
- Economic Opportunities
- Parks & Public Spaces
- +



Utah is growing... and we have a plan. Our future quality of life depends on the choices we make today. Wasatch Choice Vision is our communities' shared vision for coordinated transportation investments, development patterns, and economic opportunities. The Wasatch Choice Vision map and key strategies show how advancing the Vision can enhance quality of life even as we grow.

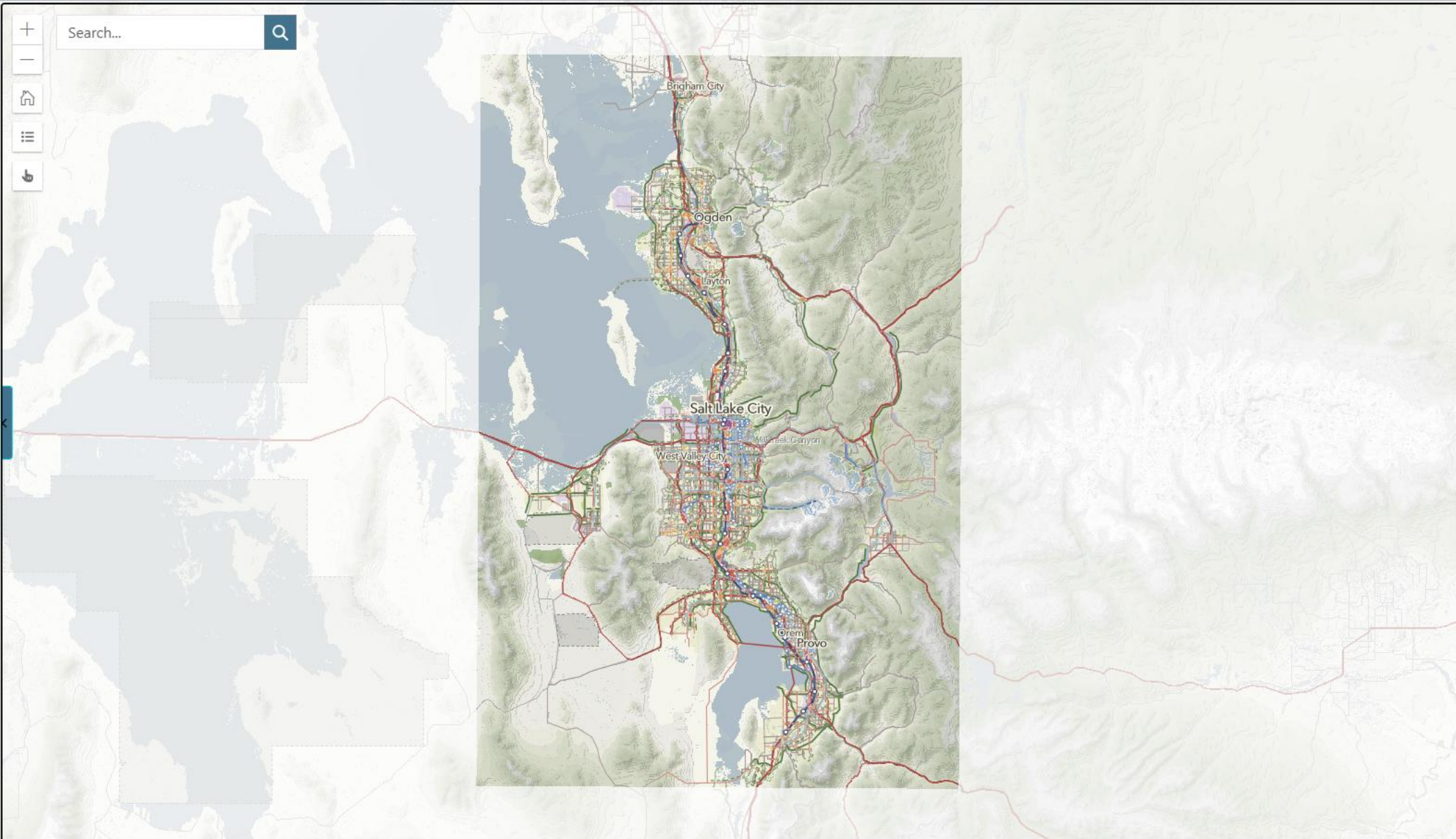
## Key Strategies

Wasatch Choice Vision key strategies for a thriving region and communities:

-  **Transportation choices**  
Provide people with real choices in how they get around - by driving, transit, biking, and walking - so people can easily reach their destinations.
-  **Housing options**  
Support housing types and locations that meet the needs of all residents.
-  **Parks and public spaces**  
Ensure ample and convenient parks, public spaces, and open land for gathering and recreating.
-  **City and town centers**  
Create and enhance city and town centers as the hearts of our communities - walkable areas where activity is focused, with places to live, work, and play.

## Goals and Benefits

The Vision is designed to improve quality of life now and for generations to come.



- Vision
- Transportation
- Centers & Land Uses
- Economic Opportunities
- Parks & Public Spaces
- +



Utah is growing... and we have a plan. Our future quality of life depends on the choices we make today. Wasatch Choice Vision is our communities' shared vision for coordinated transportation investments, development patterns, and economic opportunities. The Wasatch Choice Vision map and key strategies show how advancing the Vision can enhance quality of life even as we grow.

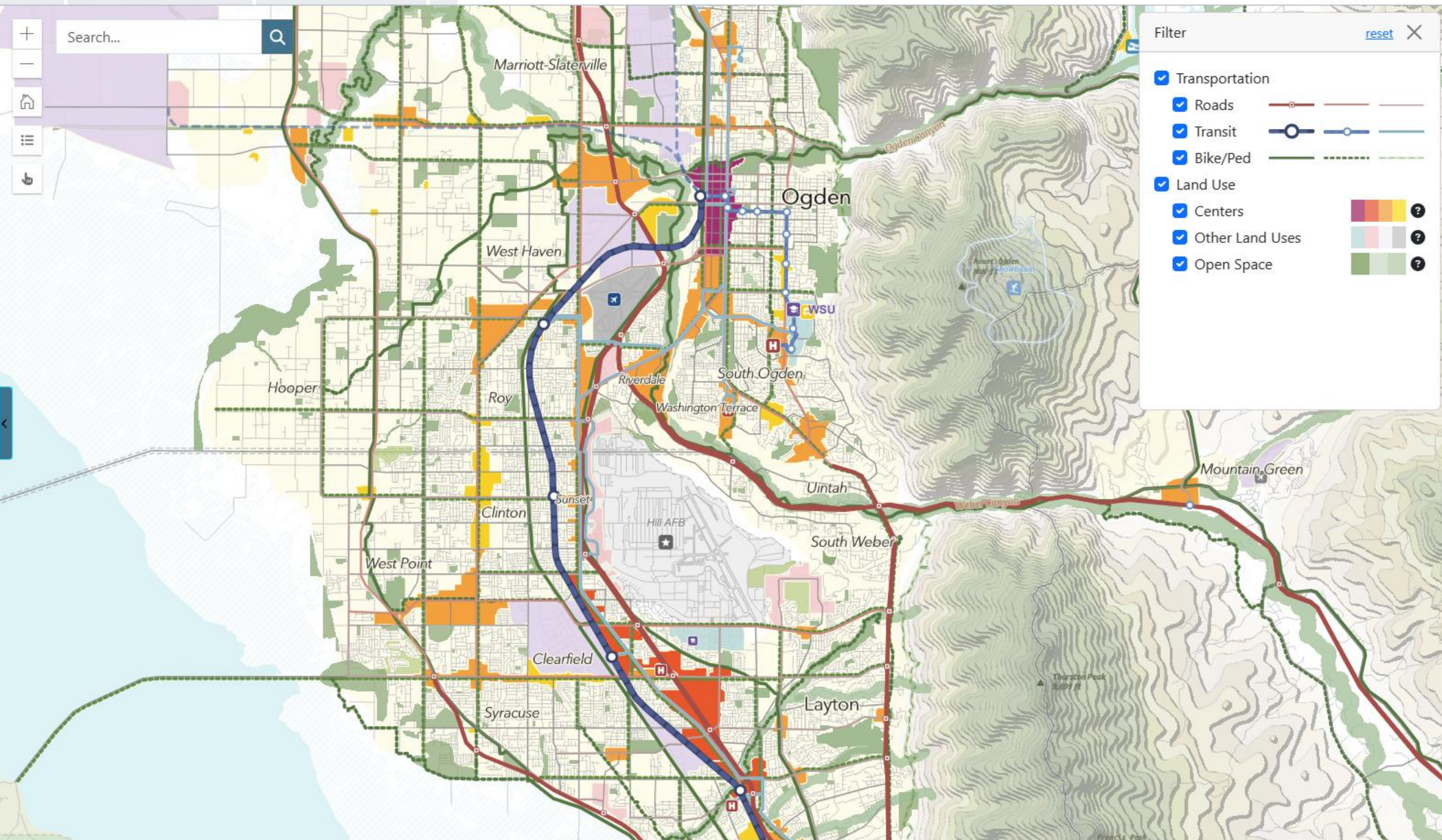
## Key Strategies

Wasatch Choice Vision key strategies for a thriving region and communities:

- Transportation choices**  
Provide people with real choices in how they get around - by driving, transit, biking, and walking - so people can easily reach their destinations.
- Housing options**  
Support housing types and locations that meet the needs of all residents.
- Parks and public spaces**  
Ensure ample and convenient parks, public spaces, and open land for gathering and recreating.
- City and town centers**  
Create and enhance city and town centers as the hearts of our communities - walkable areas where activity is focused, with places to live, work, and play.

## Goals and Benefits

The Vision is designed to improve quality of life now and for generations to come.



Filter reset X

- Transportation
  - Roads
  - Transit
  - Bike/Ped
- Land Use
  - Centers
  - Other Land Uses
  - Open Space

# Wasatch Choice Map #wherematters



- Vision
- Transportation
- Centers & Land Uses
- Economic Opportunities
- Parks & Public Spaces
- +



Utah is growing... and we have a plan. Our future quality of life depends on the choices we make today. Wasatch Choice Vision is our communities' shared vision for coordinated transportation investments, development patterns, and economic opportunities. The Wasatch Choice Vision map and key strategies show how advancing the Vision can enhance quality of life even as we grow.

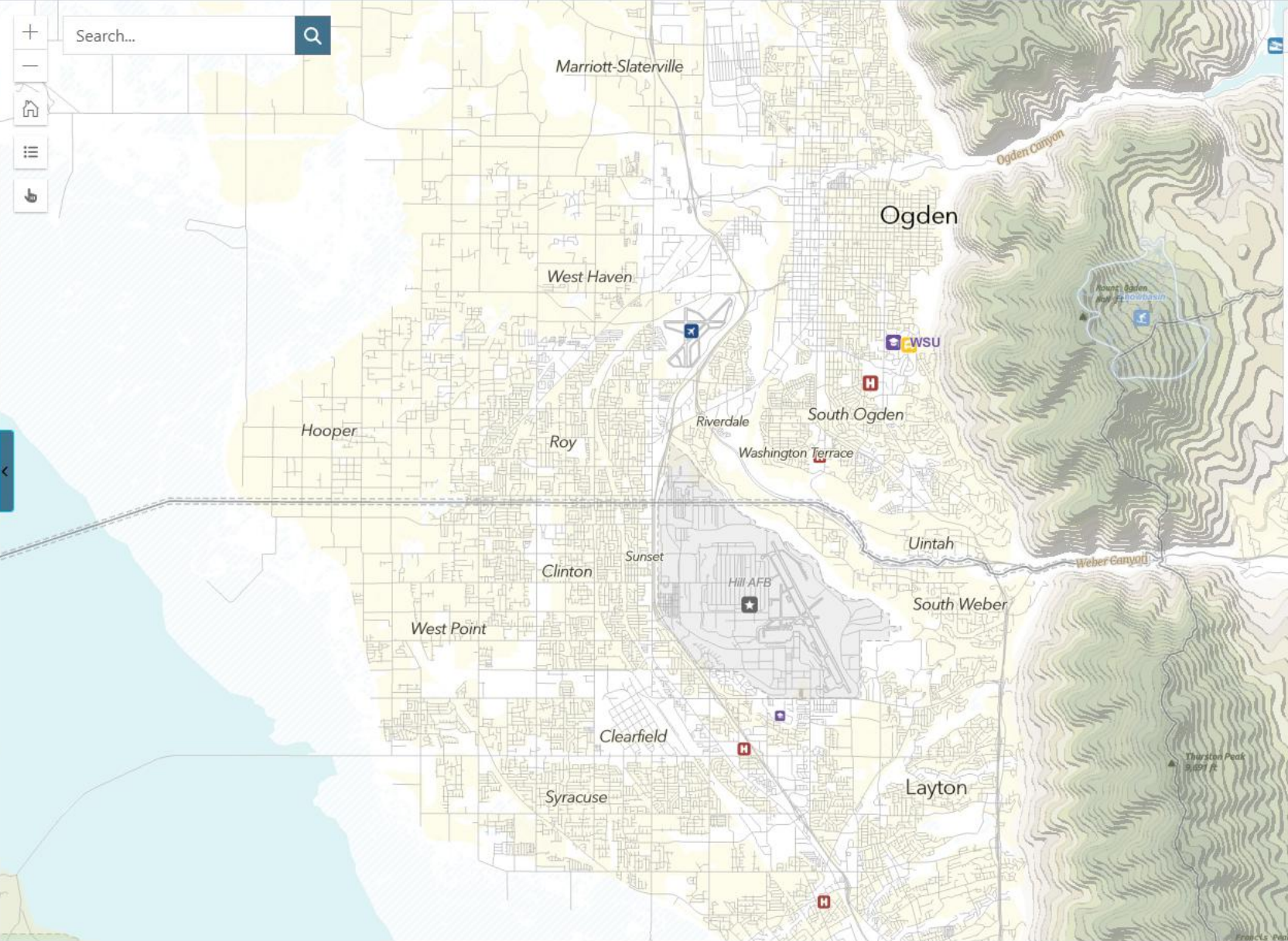
## Key Strategies

Wasatch Choice Vision key strategies for a thriving region and communities:

- Transportation choices**  
Provide people with real choices in how they get around - by driving, transit, biking, and walking - so people can easily reach their destinations.
- Housing options**  
Support housing types and locations that meet the needs of all residents.
- Parks and public spaces**  
Ensure ample and convenient parks, public spaces, and open land for gathering and recreating.
- City and town centers**  
Create and enhance city and town centers as the hearts of our communities - walkable areas where activity is focused, with places to live, work, and play.

## Goals and Benefits

The Vision is designed to improve quality of life now and for generations to come.



### Filter

[reset](#) [X](#)

- Transportation
  - Roads
  - Transit
  - Bike/Ped
- Land Use
  - Centers
  - Other Land Uses
  - Open Space

## Transportation Choices

As our region continues to grow, we need choices for how to move around.



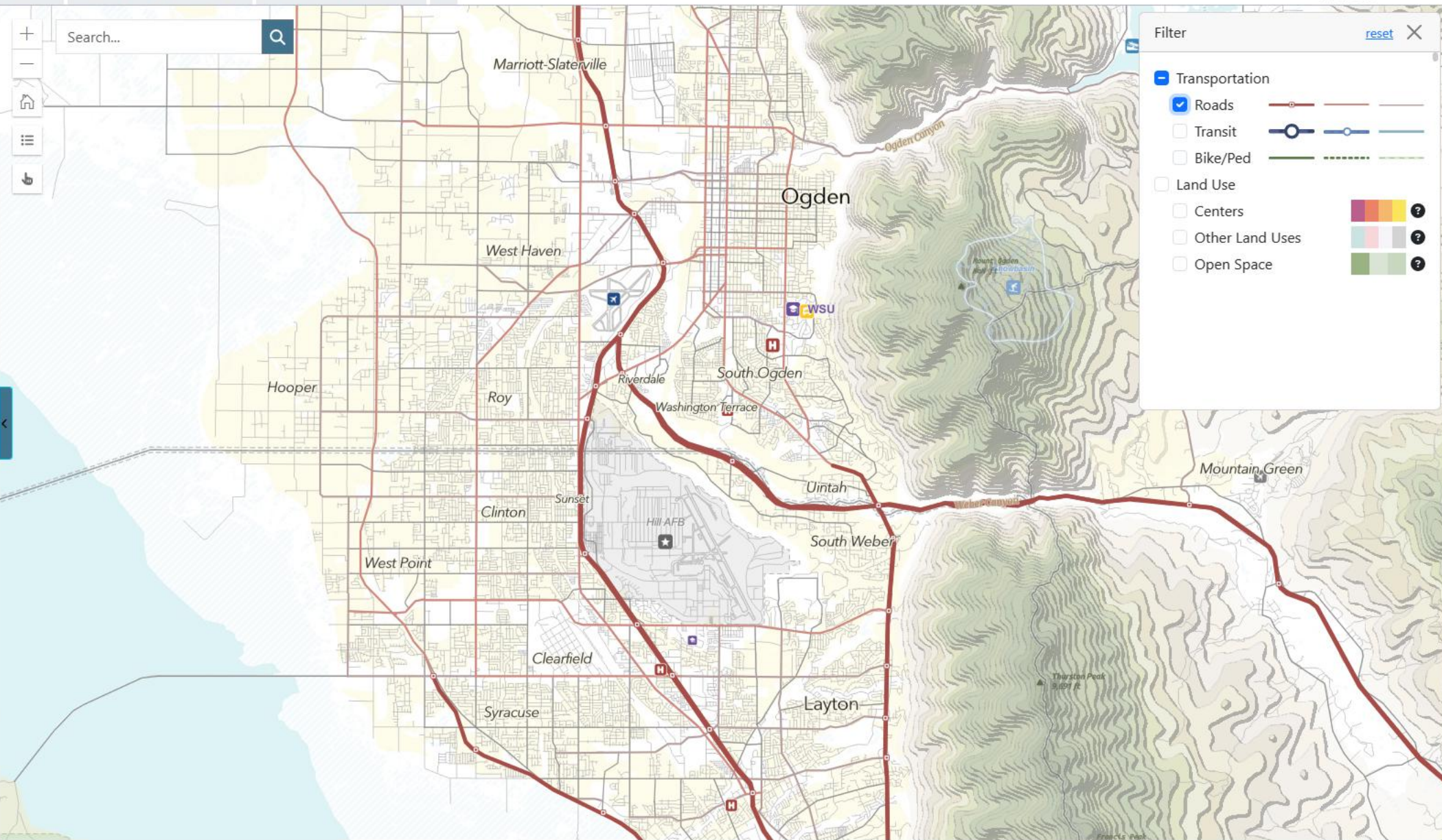
## Partners of the Vision

The Wasatch Choice Vision is built on community values and public input. The organizations that facilitated this process include:

- Wasatch Front Regional Council
- Mountainland Association of Governments
- Utah Department of Transportation
- Utah Transit Authority
- Utah League of Cities and Towns
- Utah Association of Counties
- Governor's Office of Planning & Budget
- Kem C. Gardner Policy Institute
- Envision Utah
- Salt Lake Chamber & Local Chambers of Commerce

## Map Notes

- The Wasatch Choice Vision map shows major land use areas anticipated in the year 2050, together with the transportation system needed to ensure our region's continued economic vitality and quality of life. The vision is dynamic and is updated regularly. Details for transportation projects, including timing and financial constraints, can be found in Utah's Unified Transportation Plan ([unifiedplan.org](http://unifiedplan.org)) Local governments will develop land use details within



**Filter** [reset](#) ✕

- Transportation**
  - Roads
  - Transit
  - Bike/Ped
- Land Use**
  - Centers
  - Other Land Uses
  - Open Space



# Wasatch Choice Map #wherematters



- Vision
- Transportation
- Centers & Land Uses
- Economic Opportunities
- Parks & Public Spaces
- +

## Transportation Choices

As our region continues to grow, we need choices for how to move around.



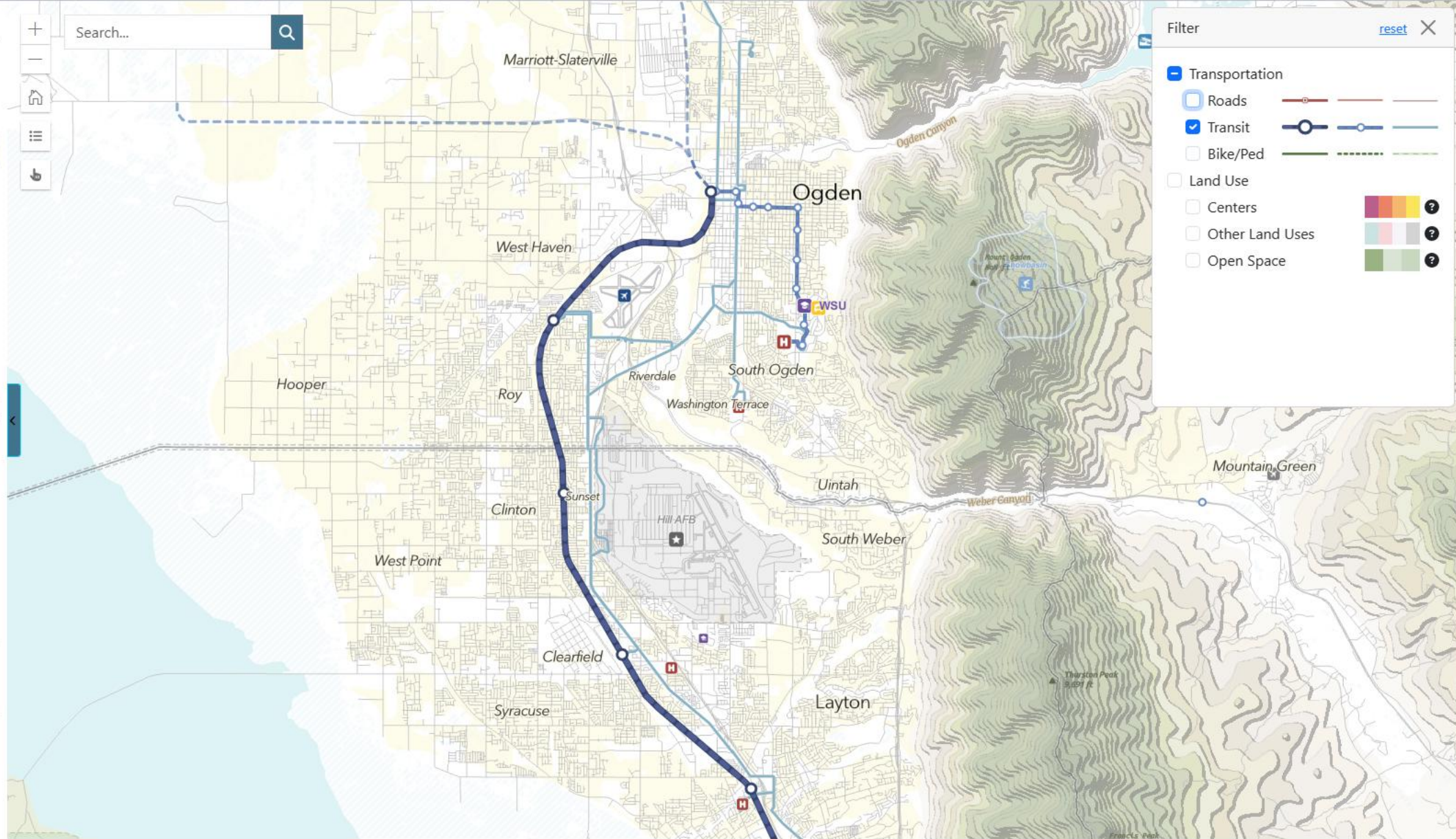
## Partners of the Vision

The Wasatch Choice Vision is built on community values and public input. The organizations that facilitated this process include:

- Wasatch Front Regional Council
- Mountainland Association of Governments
- Utah Department of Transportation
- Utah Transit Authority
- Utah League of Cities and Towns
- Utah Association of Counties
- Governor's Office of Planning & Budget
- Kem C. Gardner Policy Institute
- Envision Utah
- Salt Lake Chamber & Local Chambers of Commerce

## Map Notes

- The Wasatch Choice Vision map shows major land use areas anticipated in the year 2050, together with the transportation system needed to ensure our region's continued economic vitality and quality of life. The vision is dynamic and is updated regularly. Details for transportation projects, including timing and financial constraints, can be found in Utah's Unified Transportation Plan ([unifiedplan.org](http://unifiedplan.org)) Local governments will develop land use details within



## Transportation Choices

As our region continues to grow, we need choices for how to move around.



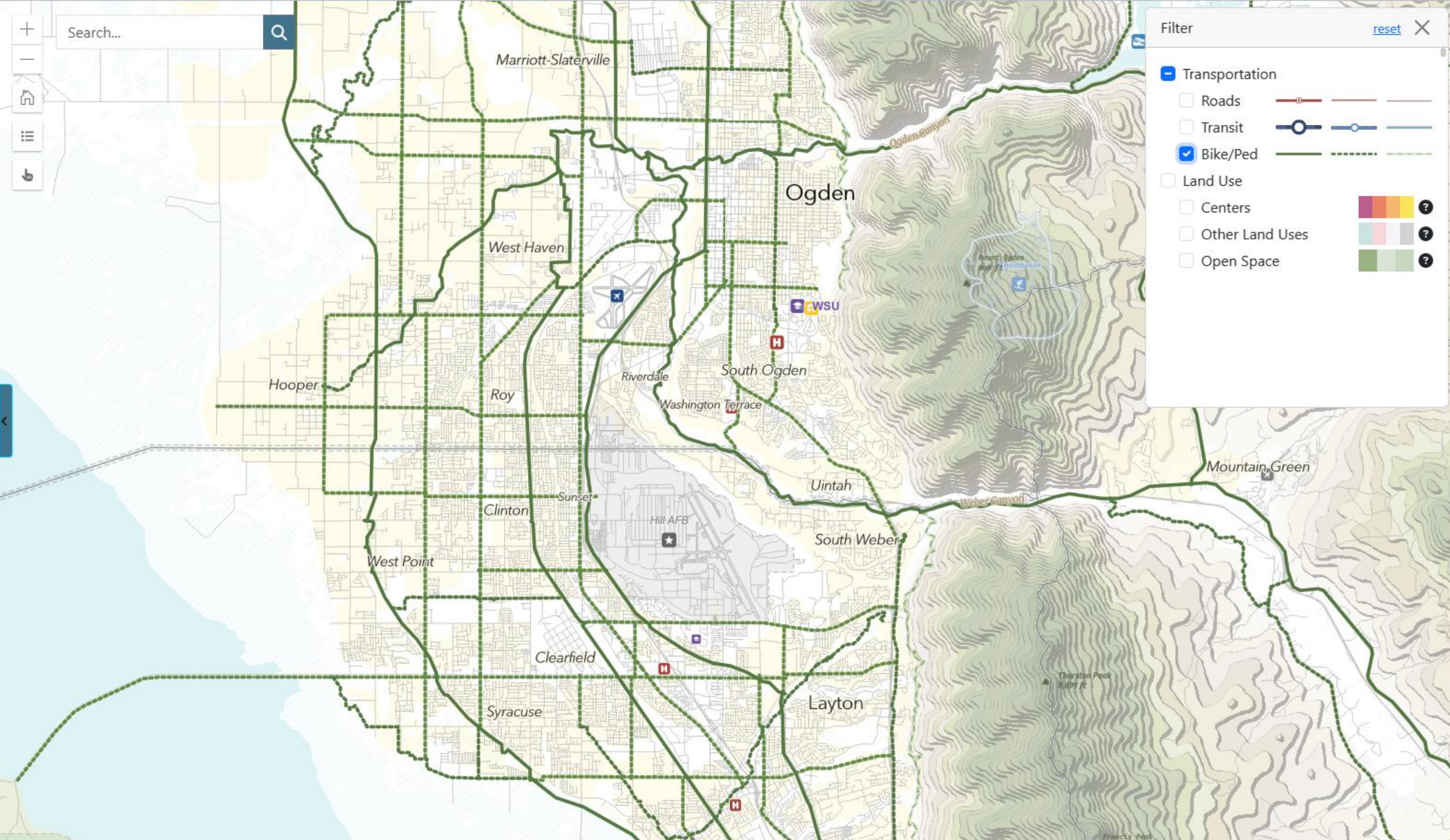
## Partners of the Vision

The Wasatch Choice Vision is built on community values and public input. The organizations that facilitated this process include:

- Wasatch Front Regional Council
- Mountainland Association of Governments
- Utah Department of Transportation
- Utah Transit Authority
- Utah League of Cities and Towns
- Utah Association of Counties
- Governor's Office of Planning & Budget
- Kem C. Gardner Policy Institute
- Envision Utah
- Salt Lake Chamber & Local Chambers of Commerce

## Map Notes

- The Wasatch Choice Vision map shows major land use areas anticipated in the year 2050, together with the transportation system needed to ensure our region's continued economic vitality and quality of life. The vision is dynamic and is updated regularly. Details for transportation projects, including timing and financial constraints, can be found in Utah's Unified Transportation Plan ([unifiedplan.org](http://unifiedplan.org)) Local governments will develop land use details within



- Vision**
- Transportation
- Centers & Land Uses
- Economic Opportunities
- Parks & Public Spaces
- +

## Centers and Land Uses

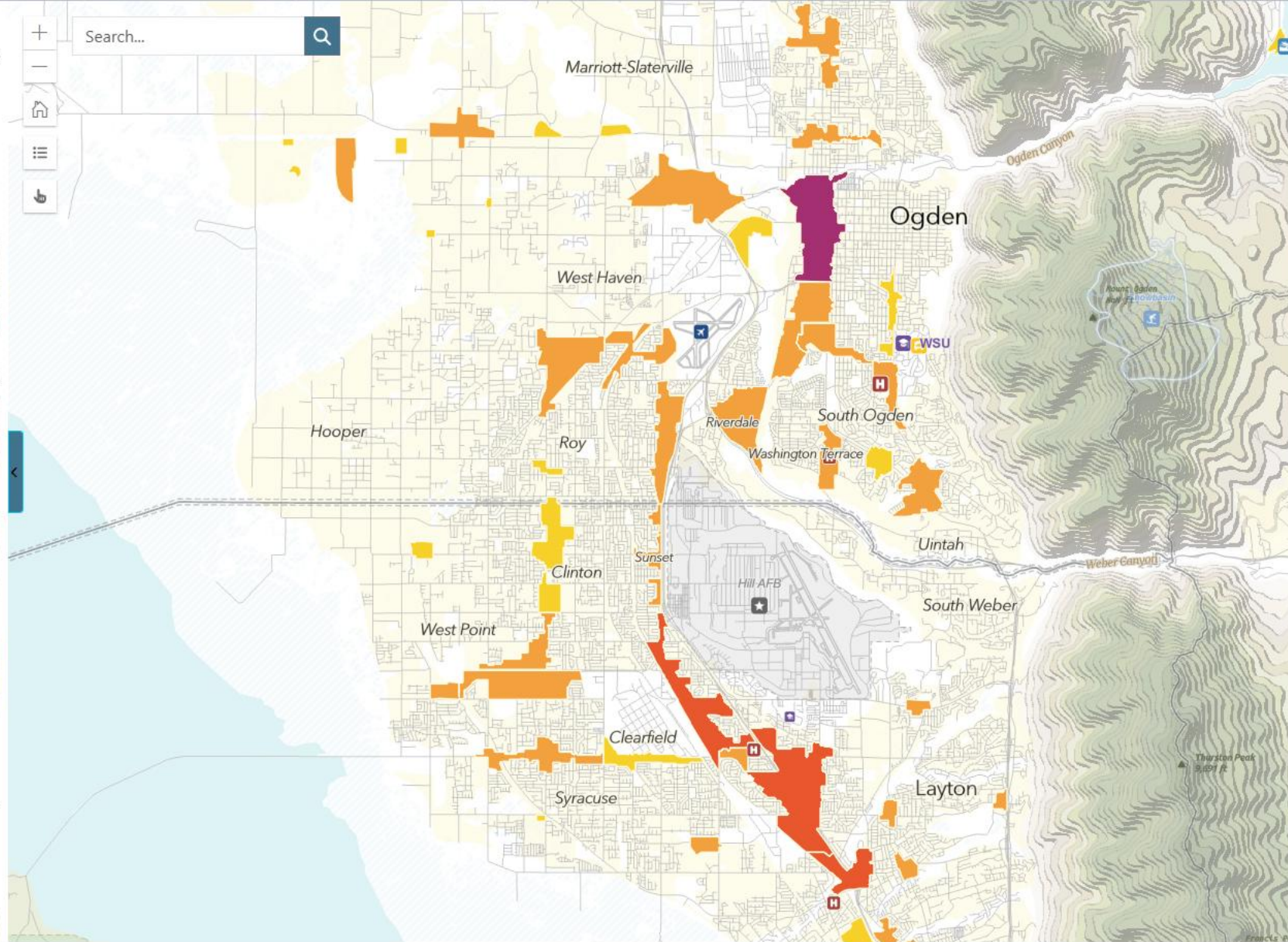
A thriving region requires great places where people can live, work, and play - places that vary from city and town centers to parks and public spaces. City and town centers are the hearts of a community - walkable areas where activity is focused, with a mix of community destinations, jobs, and housing.

- METROPOLITAN CENTERS
- URBAN CENTERS
- CITY CENTERS
- NEIGHBORHOOD CENTERS
- EMPLOYMENT DISTRICTS
- INDUSTRIAL DISTRICTS
- RESIDENTIAL AREAS
- PARKS & PUBLIC SPACES

## Transportation Choices

As our region continues to grow, we need choices for how to move around.

- Highways
  - Major Arterial Roads
  - Minor Arterial and Collector Roads
- Commuter Rail
  - LRT/Street Car/BRT
  - Regional Bus



### Filter

[reset](#) ✕

- Transportation
  - Roads
  - Transit
  - Bike/Ped
- Land Use
  - Centers
  - Other Land Uses
  - Open Space

- Vision**
- Transportation
- Centers & Land Uses
- Economic Opportunities
- Parks & Public Spaces
- +

## Centers and Land Uses

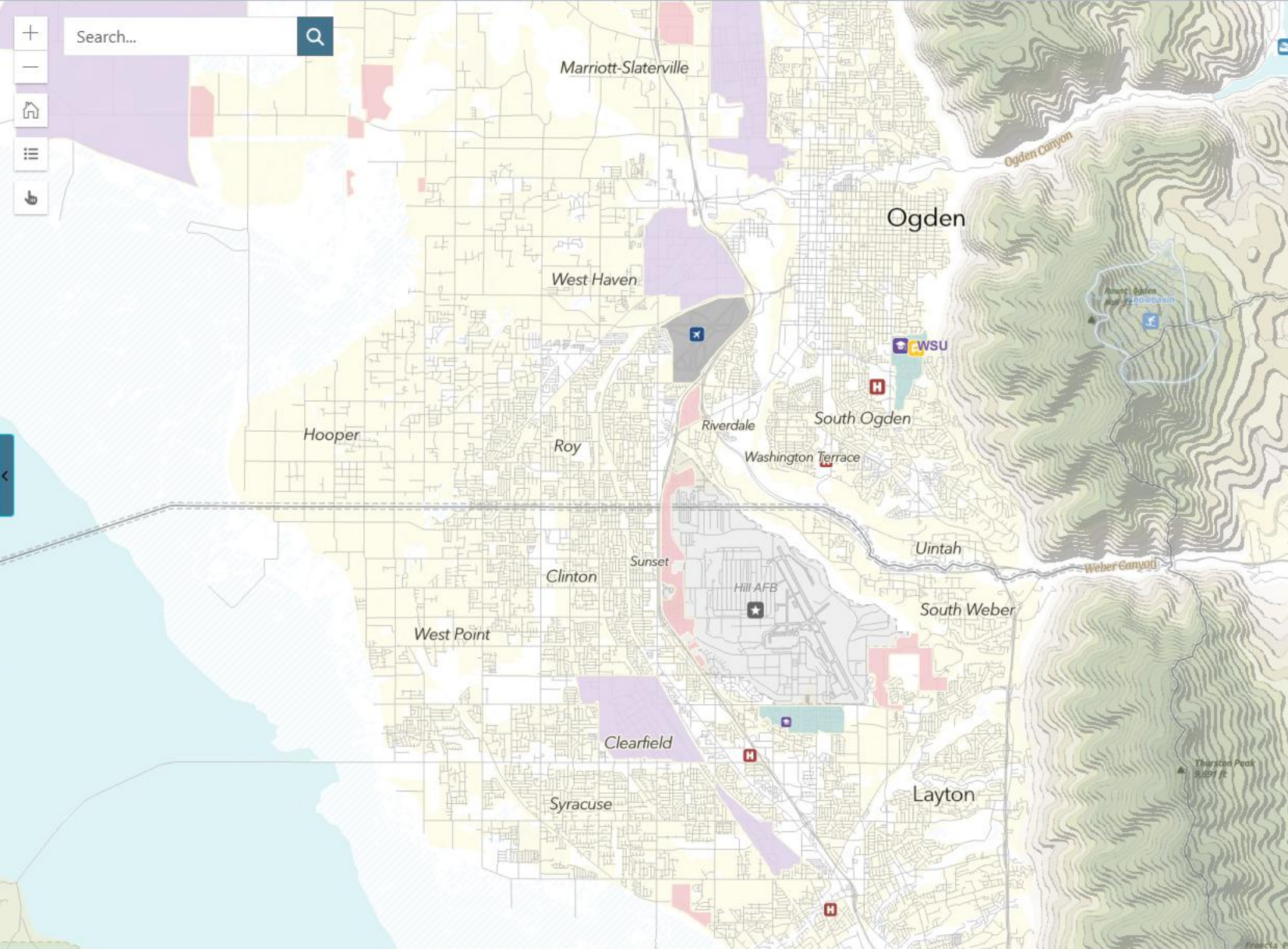
A thriving region requires great places where people can live, work, and play - places that vary from city and town centers to parks and public spaces. City and town centers are the hearts of a community - walkable areas where activity is focused, with a mix of community destinations, jobs, and housing.

- METROPOLITAN CENTERS
- URBAN CENTERS
- CITY CENTERS
- NEIGHBORHOOD CENTERS
- EMPLOYMENT DISTRICTS
- INDUSTRIAL DISTRICTS
- RESIDENTIAL AREAS
- PARKS & PUBLIC SPACES

## Transportation Choices

As our region continues to grow, we need choices for how to move around.

- Highways
- Commuter Rail



### Filter

[reset](#) ✕

- Transportation
  - Roads
  - Transit
  - Bike/Ped
- Land Use
  - Centers
  - Other Land Uses
  - Open Space

- Vision**
- Transportation
- Centers & Land Uses
- Economic Opportunities
- Parks & Public Spaces
- +

## Centers and Land Uses

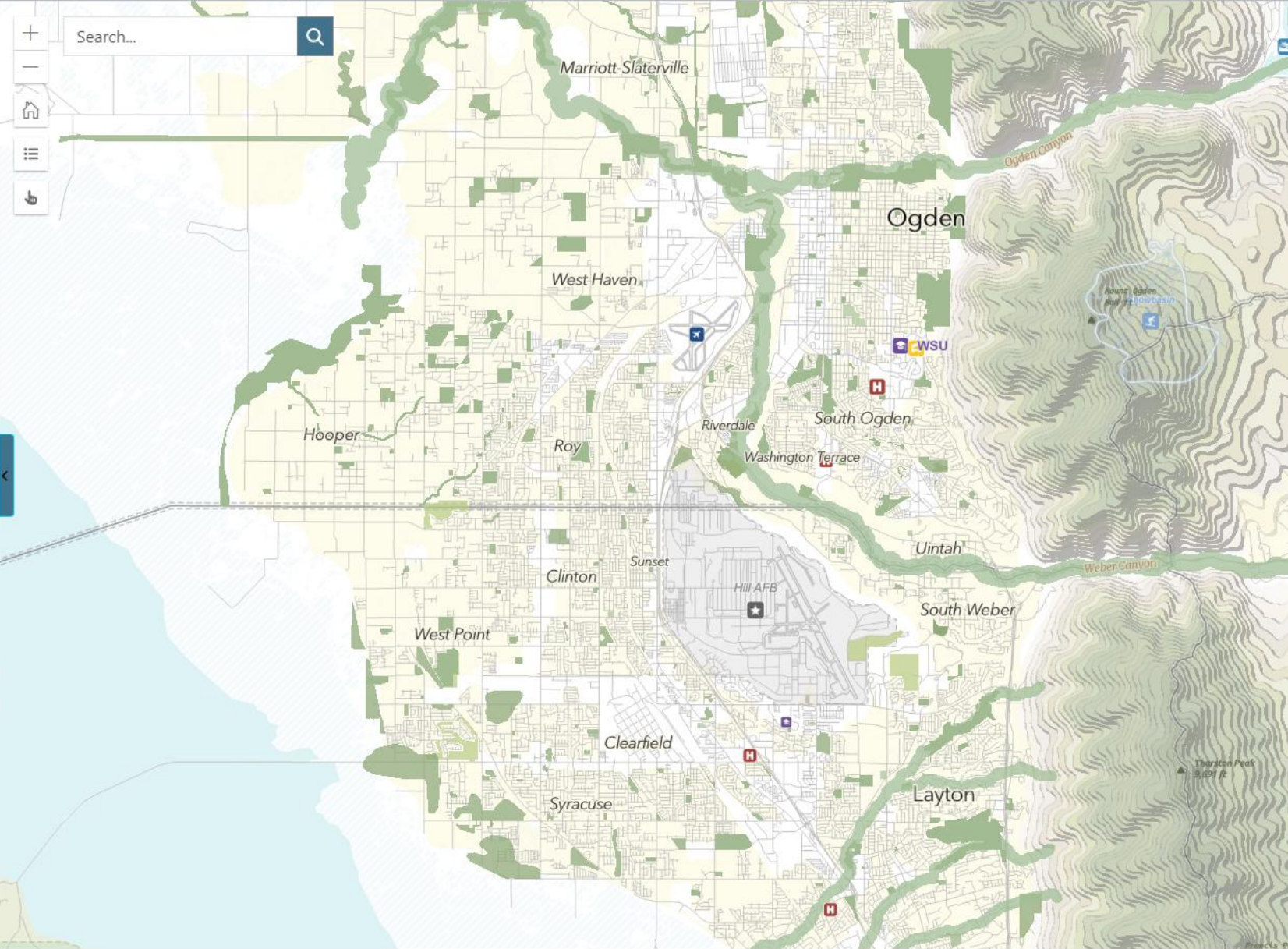
A thriving region requires great places where people can live, work, and play - places that vary from city and town centers to parks and public spaces. City and town centers are the hearts of a community - walkable areas where activity is focused, with a mix of community destinations, jobs, and housing.

- METROPOLITAN CENTERS
- URBAN CENTERS
- CITY CENTERS
- NEIGHBORHOOD CENTERS
- EMPLOYMENT DISTRICTS
- INDUSTRIAL DISTRICTS
- RESIDENTIAL AREAS
- PARKS & PUBLIC SPACES

## Transportation Choices

As our region continues to grow, we need choices for how to move around.

- Highways
- Commuter Rail
- LRT/Street Car/BRT
- Regional Bus



Filter reset ✕

- Transportation
  - Roads
  - Transit
  - Bike/Ped
- Land Use
  - Centers
  - Other Land Uses
  - Open Space

- Vision
- Transportation
- Centers & Land Uses
- Economic Opportunities
- Parks & Public Spaces
- +



Utah is growing... and we have a plan. Our future quality of life depends on the choices we make today. Wasatch Choice Vision is our communities' shared vision for coordinated transportation investments, development patterns, and economic opportunities. The Wasatch Choice Vision map and key strategies show how advancing the Vision can enhance quality of life even as we grow.

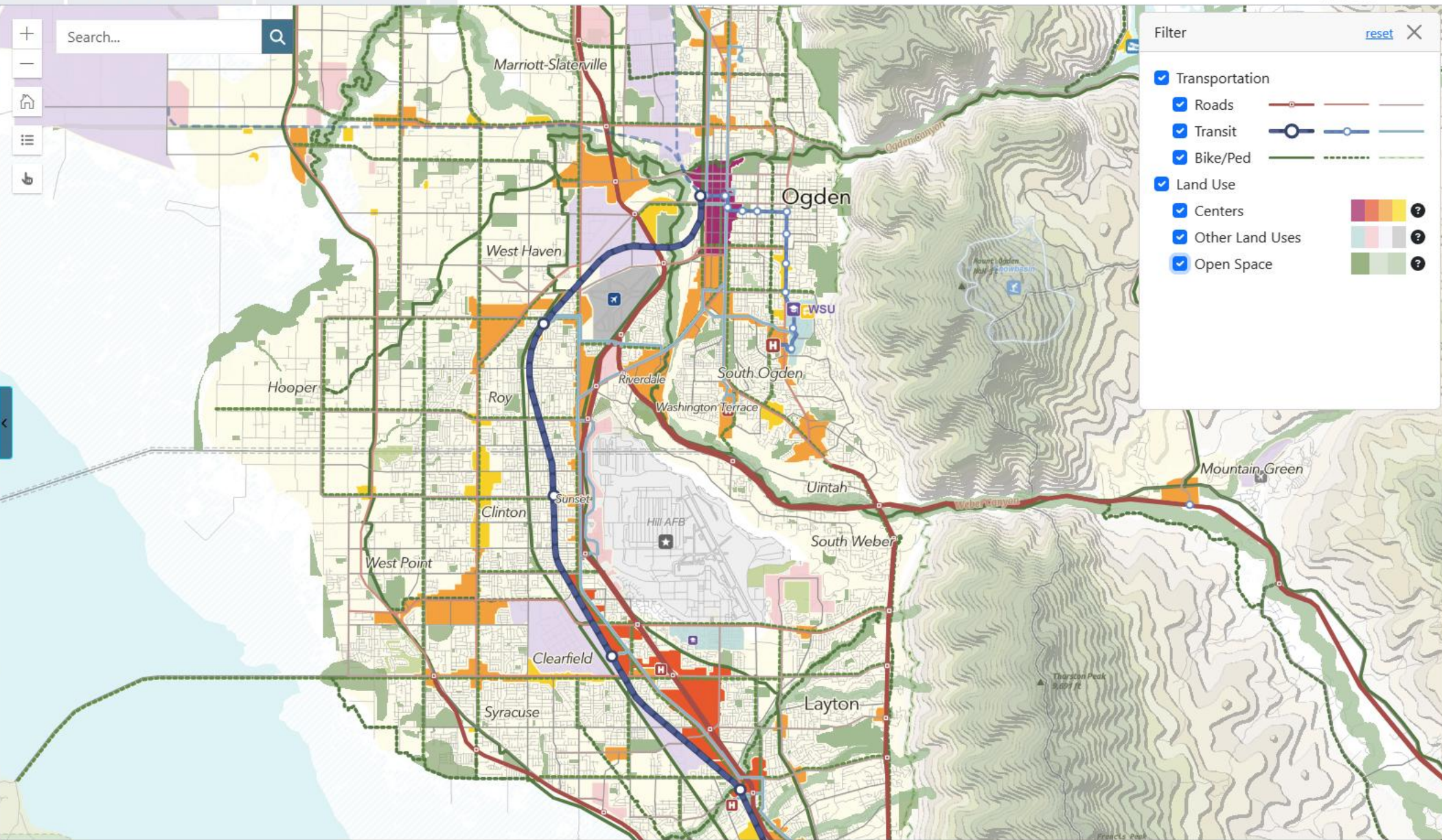
## Key Strategies

Wasatch Choice Vision key strategies for a thriving region and communities:

- Transportation choices**  
Provide people with real choices in how they get around - by driving, transit, biking, and walking - so people can easily reach their destinations.
- Housing options**  
Support housing types and locations that meet the needs of all residents.
- Parks and public spaces**  
Ensure ample and convenient parks, public spaces, and open land for gathering and recreating.
- City and town centers**  
Create and enhance city and town centers as the hearts of our communities - walkable areas where activity is focused, with places to live, work, and play.

## Goals and Benefits

The Vision is designed to improve quality of life now and for generations to come.



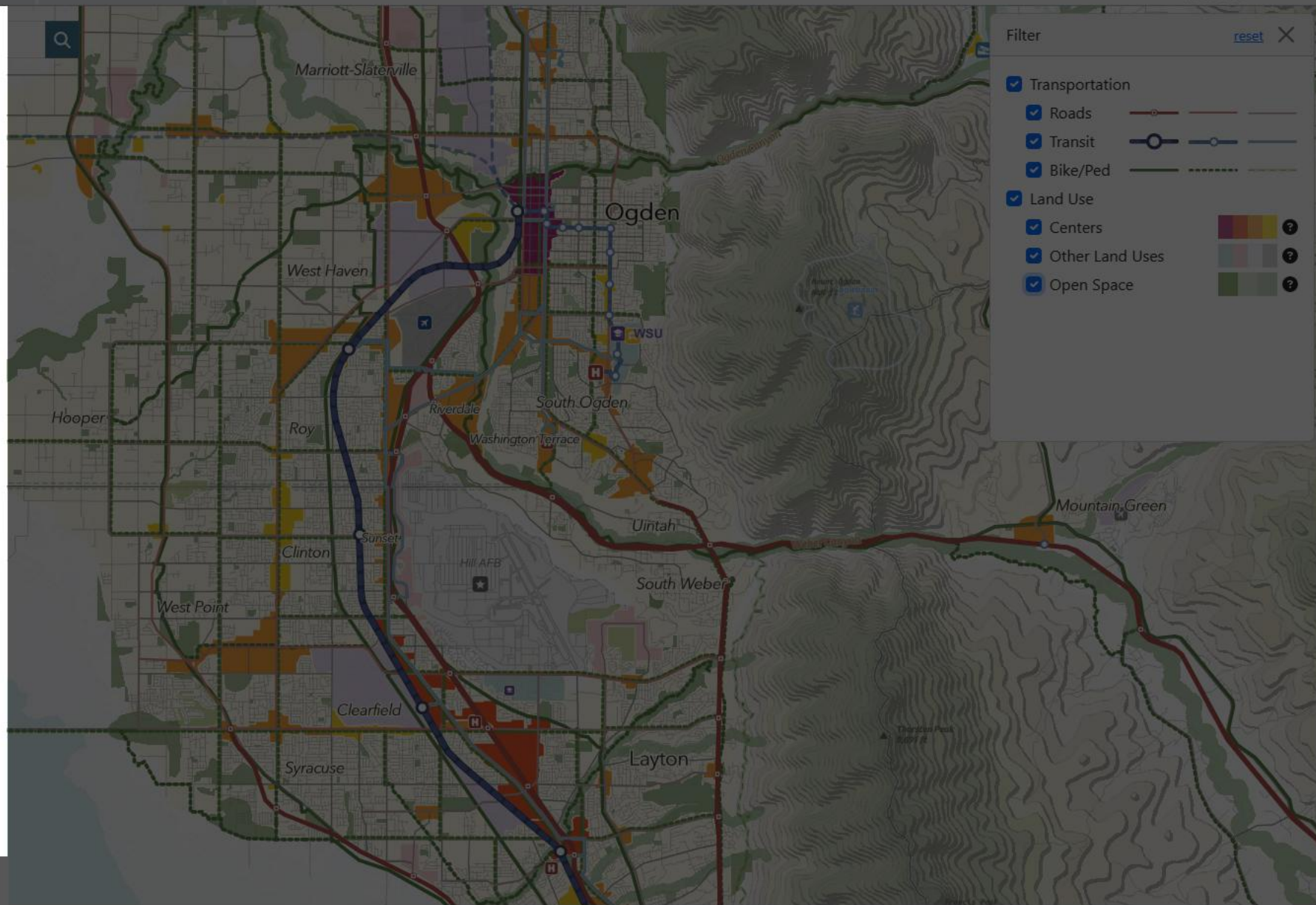
Filter [reset](#) ✕

- Transportation
  - Roads
  - Transit
  - Bike/Ped
- Land Use
  - Centers
  - Other Land Uses
  - Open Space

# Goals and Benefits

The Vision is designed to improve quality of life now and for generations to come.

-  Livable and healthy communities
-  Access to economic and educational opportunities
-  Manageable and reliable traffic conditions
-  Quality transportation choices
-  Safe, user friendly streets
-  Clean air
-  Housing choices and affordable living expenses
-  Fiscally responsible communities and infrastructure
-  Sustainable environment
-  Ample parks and public spaces



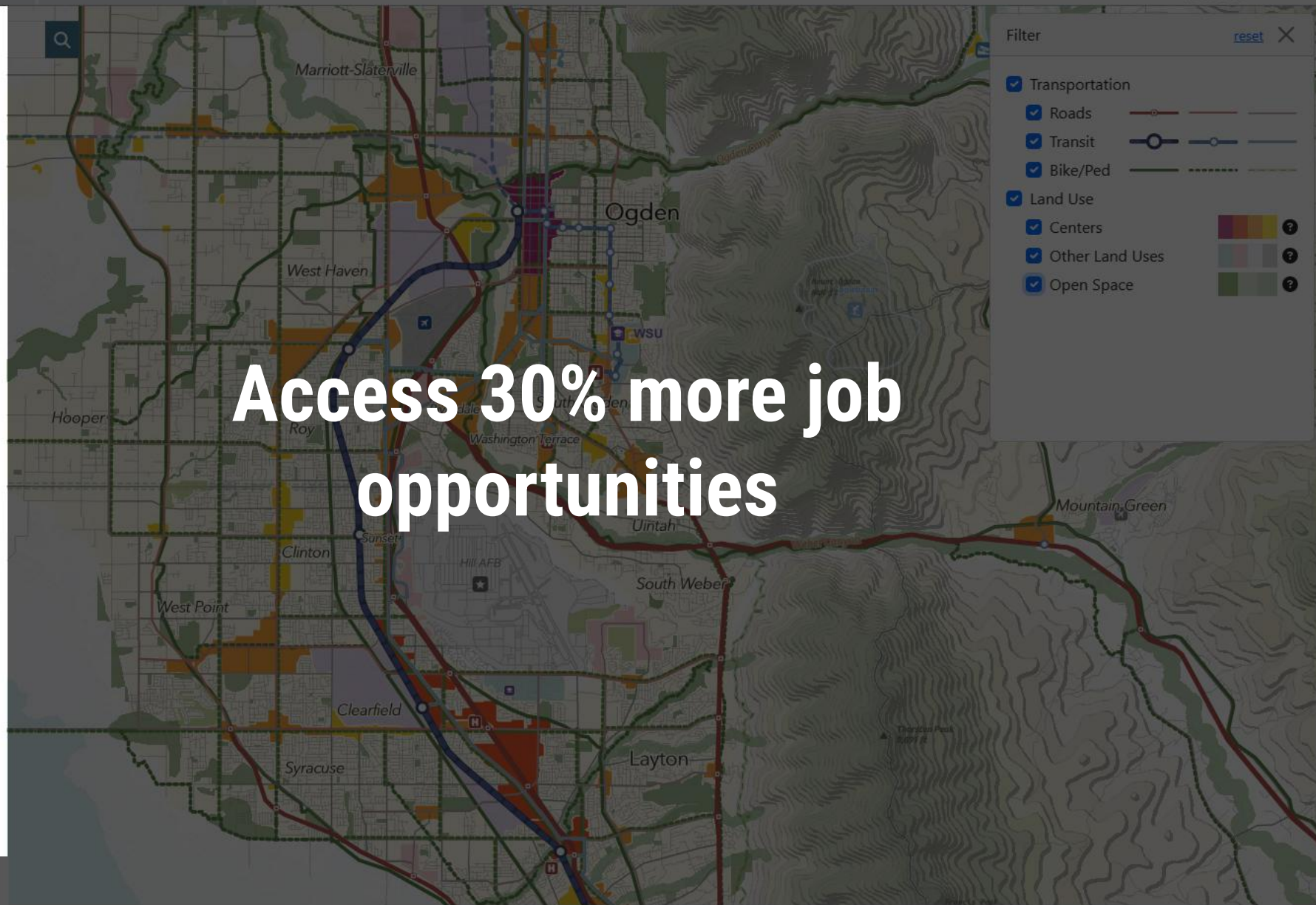
Filter [reset](#) ✕

- Transportation
  - Roads
  - Transit
  - Bike/Ped
- Land Use
  - Centers
  - Other Land Uses
  - Open Space

# Goals and Benefits

The Vision is designed to improve quality of life now and for generations to come.

-  Livable and healthy communities
-  Access to economic and educational opportunities
-  Manageable and reliable traffic conditions
-  Quality transportation choices
-  Safe, user friendly streets
-  Clean air
-  Housing choices and affordable living expenses
-  Fiscally responsible communities and infrastructure
-  Sustainable environment
-  Ample parks and public spaces

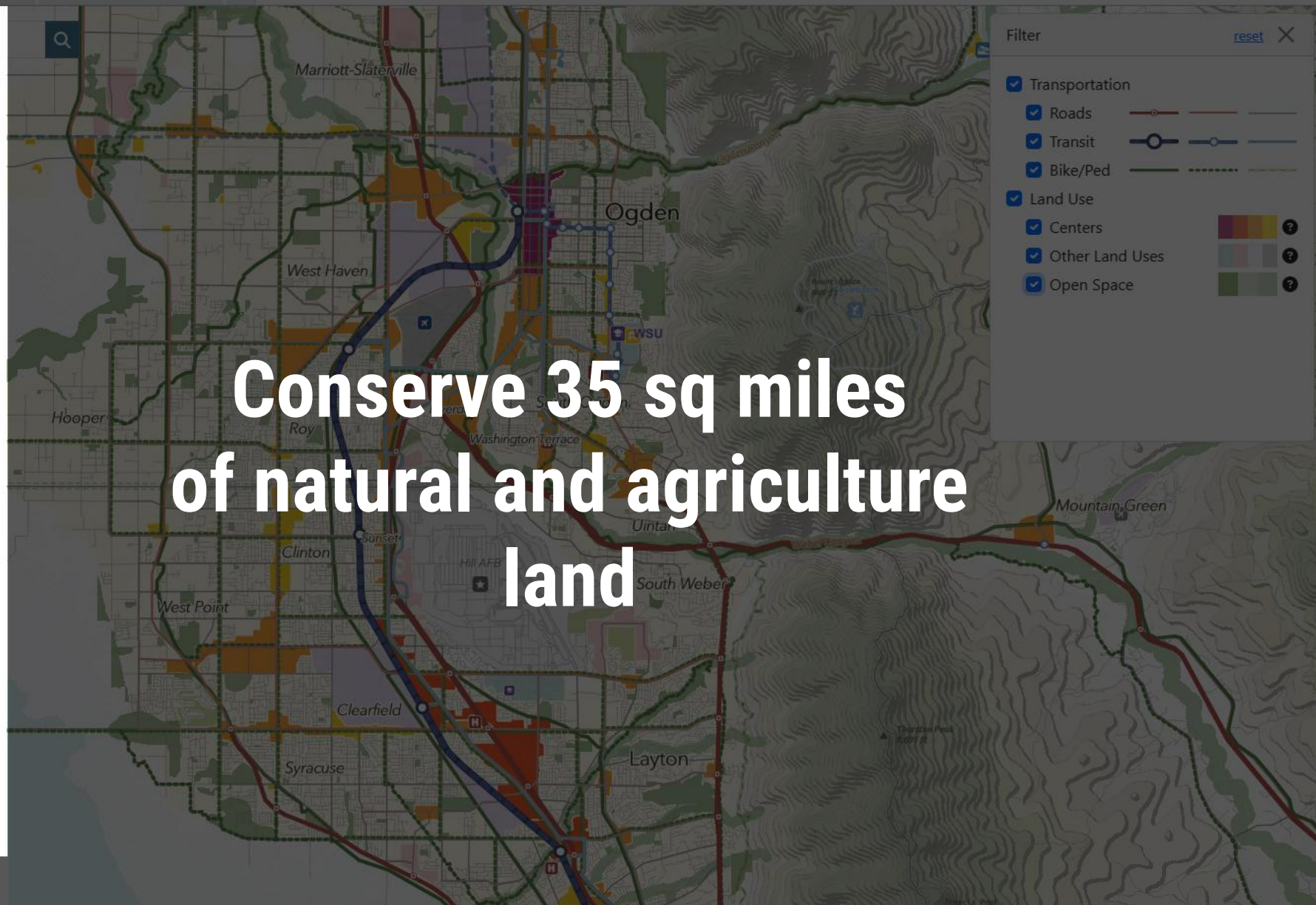




# Goals and Benefits

The Vision is designed to improve quality of life now and for generations to come.

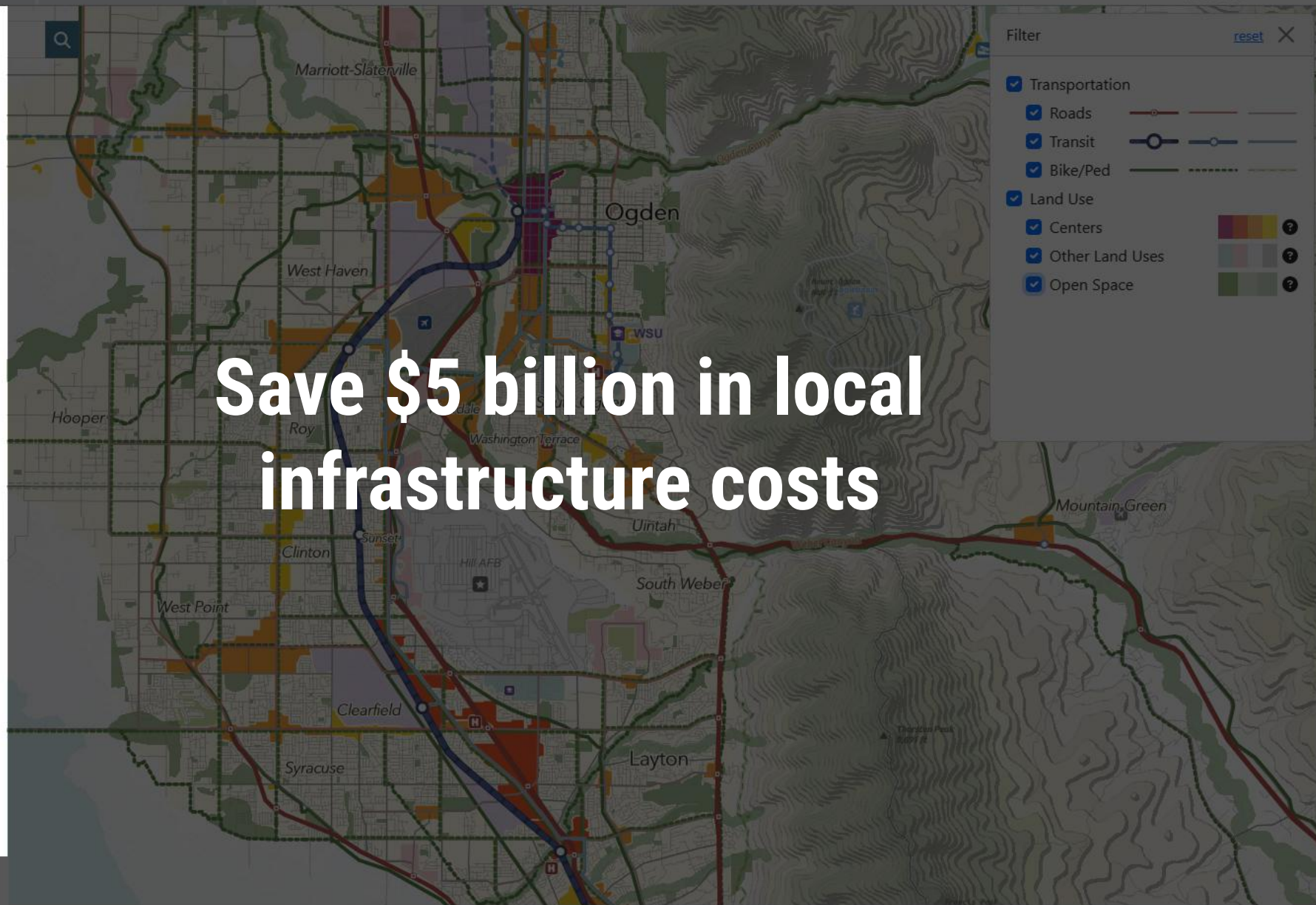
-  Livable and healthy communities
-  Access to economic and educational opportunities
-  Manageable and reliable traffic conditions
-  Quality transportation choices
-  Safe, user friendly streets
-  Clean air
-  Housing choices and affordable living expenses
-  Fiscally responsible communities and infrastructure
-  Sustainable environment
-  Ample parks and public spaces



# Goals and Benefits

The Vision is designed to improve quality of life now and for generations to come.

-  Livable and healthy communities
-  Access to economic and educational opportunities
-  Manageable and reliable traffic conditions
-  Quality transportation choices
-  Safe, user friendly streets
-  Clean air
-  Housing choices and affordable living expenses
-  Fiscally responsible communities and infrastructure
-  Sustainable environment
-  Ample parks and public spaces



Filter [reset](#) ✕

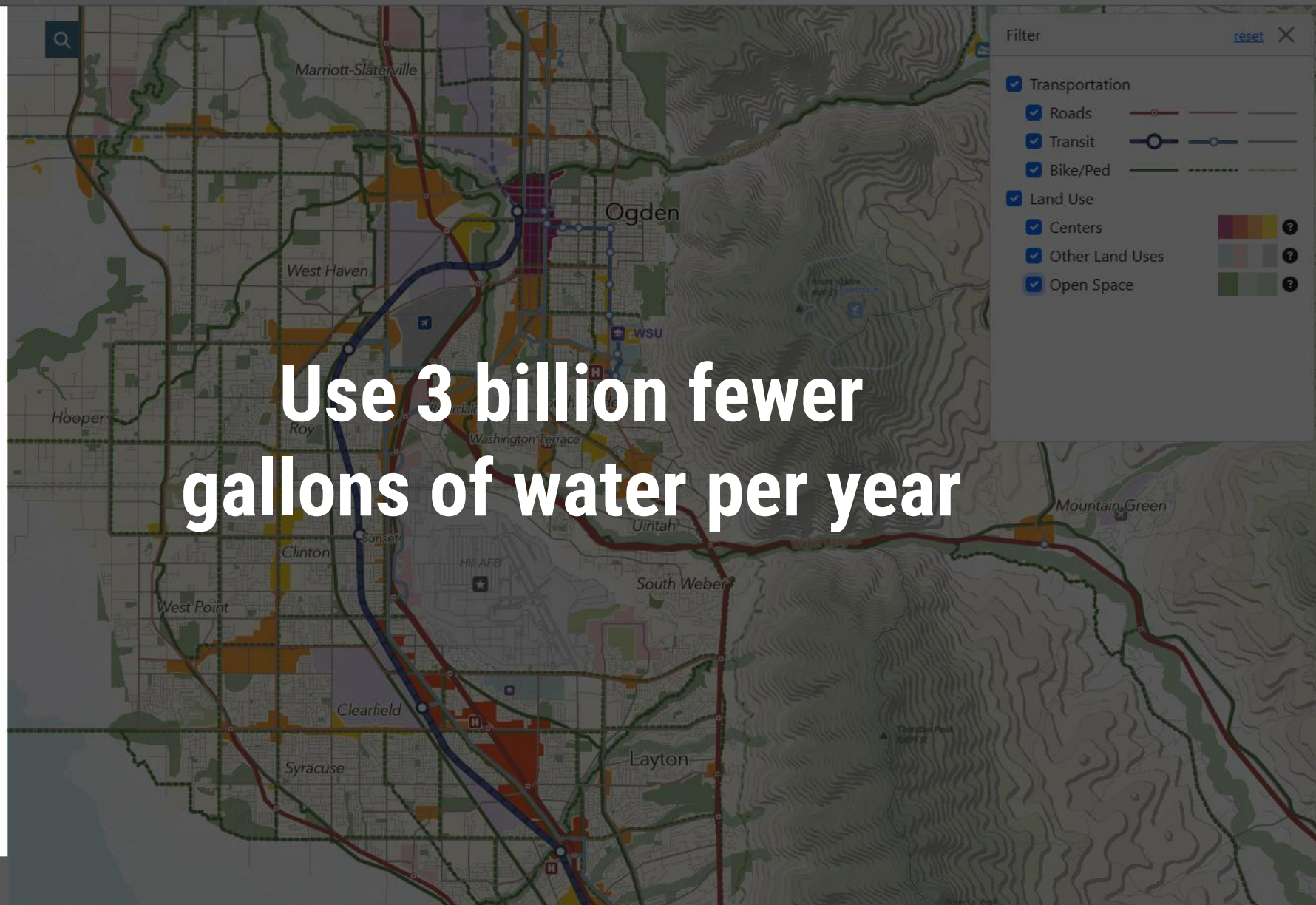
- Transportation
  - Roads
  - Transit
  - Bike/Ped
- Land Use
  - Centers
  - Other Land Uses
  - Open Space

# Save \$5 billion in local infrastructure costs

# Goals and Benefits

The Vision is designed to improve quality of life now and for generations to come.

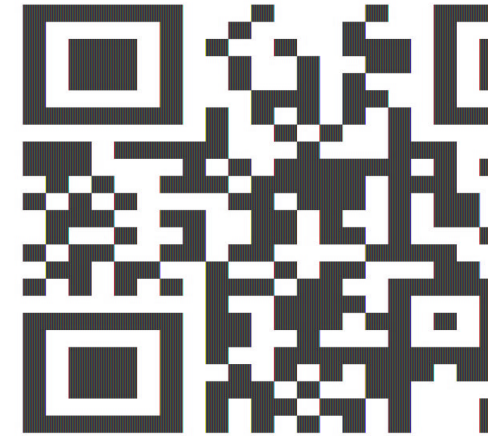
-  Livable and healthy communities
-  Access to economic and educational opportunities
-  Manageable and reliable traffic conditions
-  Quality transportation choices
-  Safe, user friendly streets
-  Clean air
-  Housing choices and affordable living expenses
-  Fiscally responsible communities and infrastructure
-  Sustainable environment
-  Ample parks and public spaces





# WASATCH CHOICE

— VISION —



*Utah is growing . . . and we have a plan!*

[wasatchchoice.org](https://wasatchchoice.org)



# Long-Range Planning Group



**JORY JOHNER**  
Director of Long-Range Planning



**JULIE BJORNSTAD**  
Senior Transportation Planner



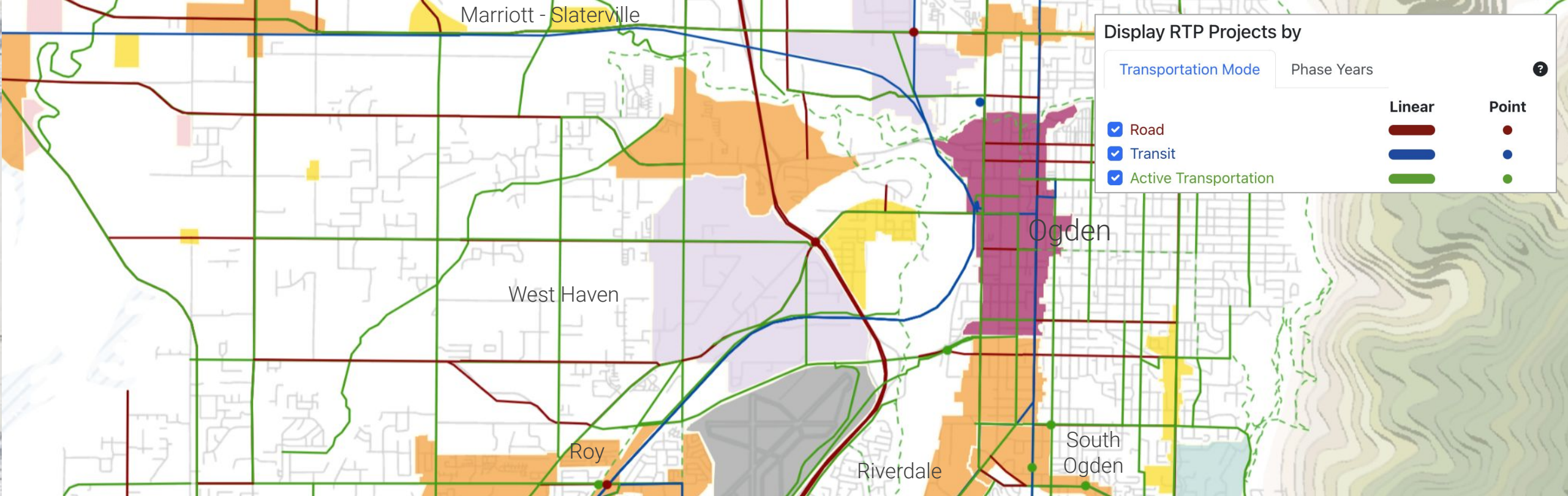
**HUGH VAN WAGENEN**  
Active Transportation Planner



**LAUREN VICTOR**  
Transit Planner



**CHAY MOSQUEDA**  
Transportation Planner



# Regional Transportation Plan (RTP) + Utah's Unified Transportation Plan

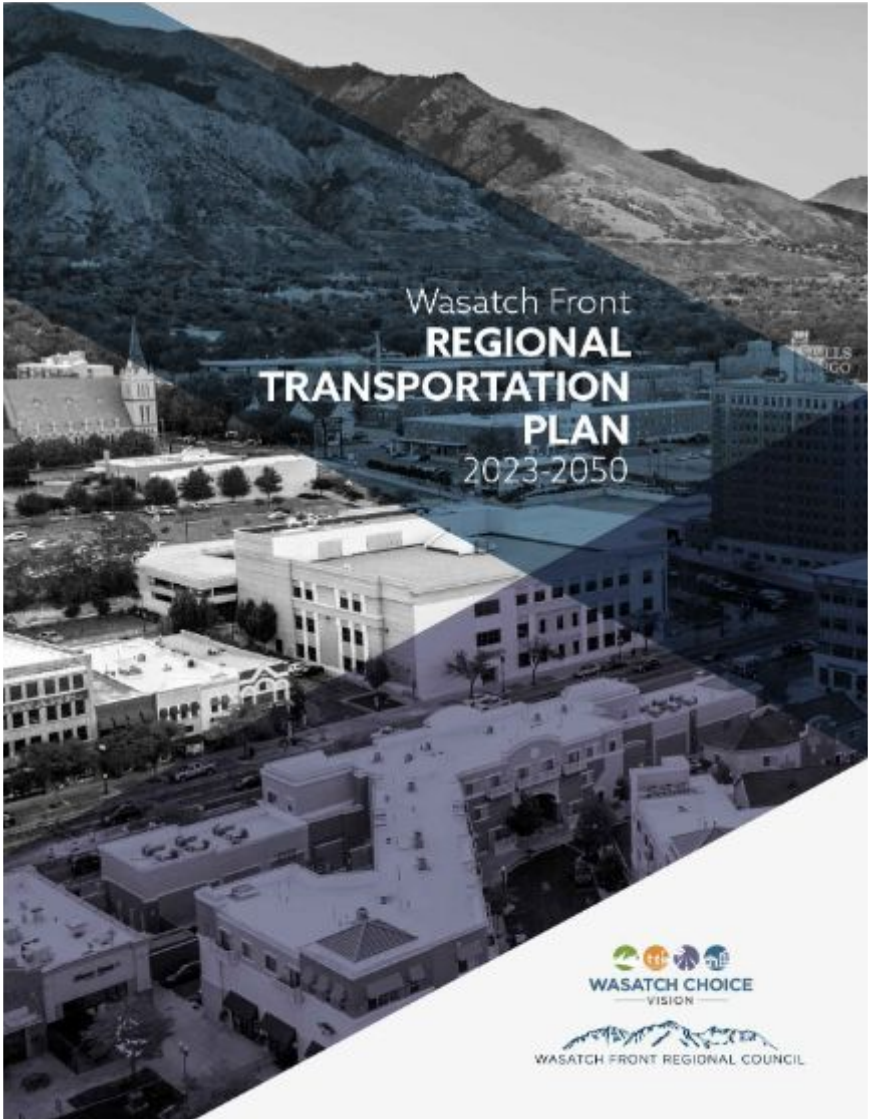
# What is included in the Regional Transportation Plan?



Cities & Counties



# Regional Transportation Plan Overview



Four-Year Cycle

Financially Constrained

Air Quality

Considers Land Use

Phase 1  
2023-2032

Phase 2  
2033-2042

Phase 3  
2043-2050

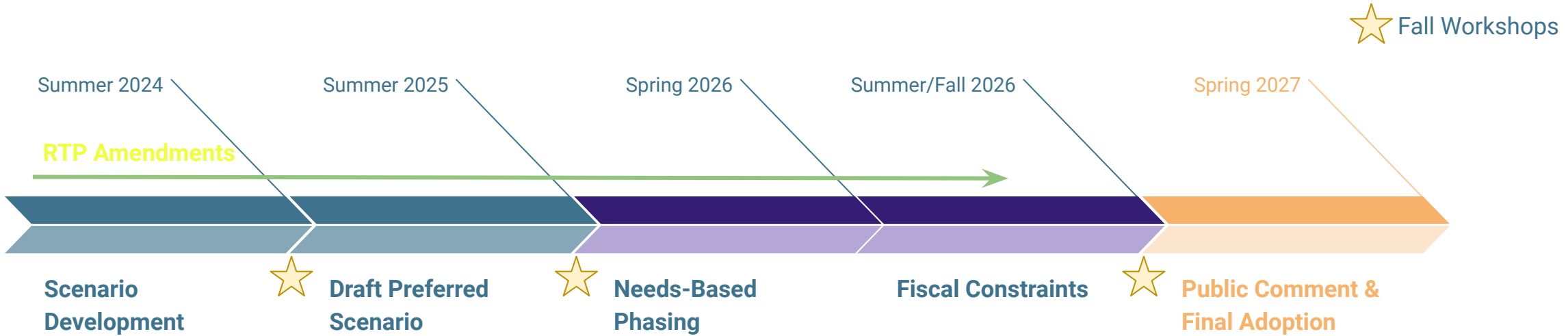
Unfunded  
2050+



TRANSPORTATION IMPROVEMENT PROGRAM + OTHER TOP PRIORITIES



# RTP Process



- Beehive Bikeways and Utah Trails Network
- External Forces and Policy
- Multimodal Planning

- Prioritize investments based on Wasatch Choice goals
- Work with Cache MPO, Dixie MPO, MAG, UDOT, and UTA to develop statewide transportation financial model for planning purposes

# 2023-2050 Utah's Unified Transportation Plan



- Unified effort by UDOT, UTA, and MPOs
- Past efforts in 2007, 2011, 2015, and 2019
- Only statewide plan in the nation



# WFRC Analytics Group



**BERT GRANBERG**  
Analytics Director



**ANDY LI**  
Sr. Trans.Engineer / Modeler



**SUZIE SWIM**  
Transportation Modeler / GIS



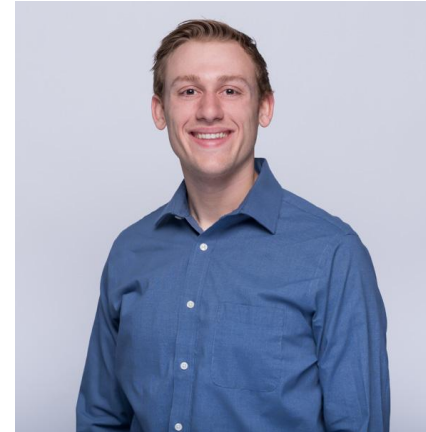
**CHAD WORTHEN**  
Travel Model Director



**JOSH REYNOLDS**  
Modeler / Developer



**BILL HERETH**  
Modeler / Developer



**CHRIS DAY**  
Transportation Data Scientist



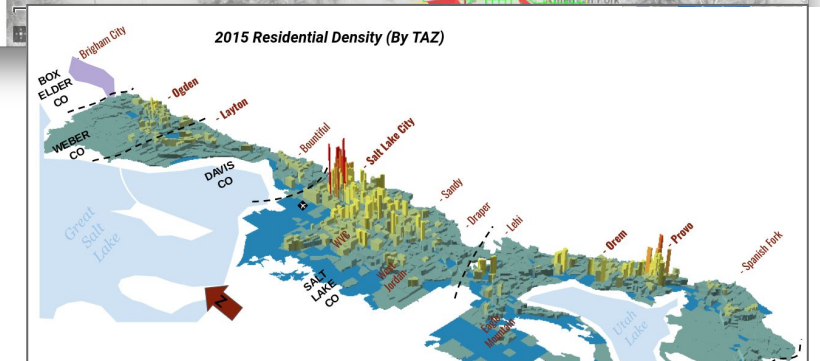
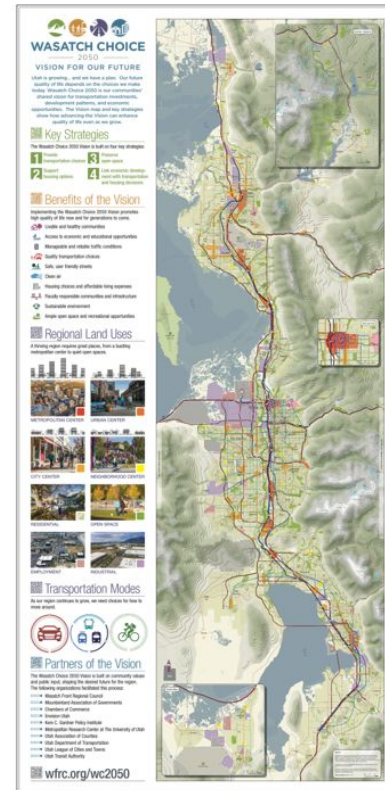
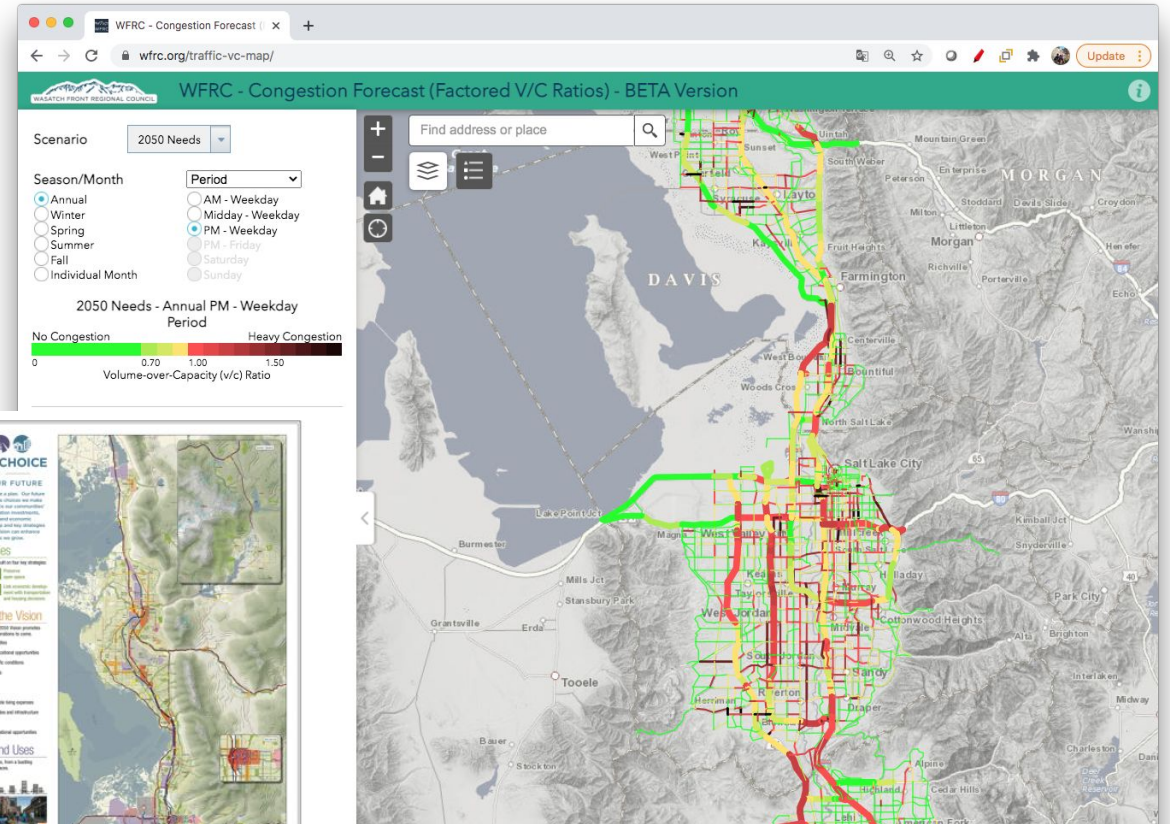
**SARAH LAWLESS**  
GIS & Mapping Lead



# WFRC Analytics Group

## Models, Forecasting, & Geographic Information Systems (GIS) ...

- Better *understand existing transportation and land use conditions*
- *Provide shared data and tools that inform* project prioritization, project studies, and other decision making
- *Explore scenarios* relative to future needs, constraints & goals



# WFRC Analytics Group

## WF Models and Forecasting:

- *Where will new development happen?*

➡ **Real Estate Market Model**

- *Where will people live and work?*

➡ **Household and Jobs Forecast**

- Annually for 2023 - 2050
- 3500 Traffic Analysis Zones
- City-level for Wasatch Front

- *How will we get there?*

➡ **Travel Demand Model**

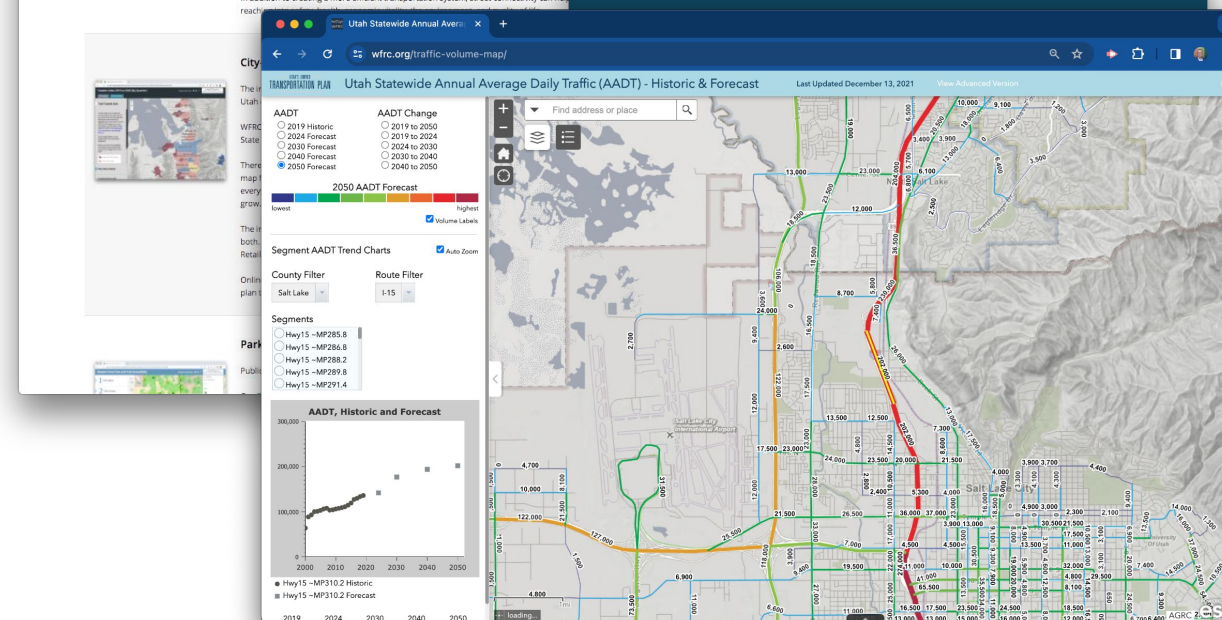
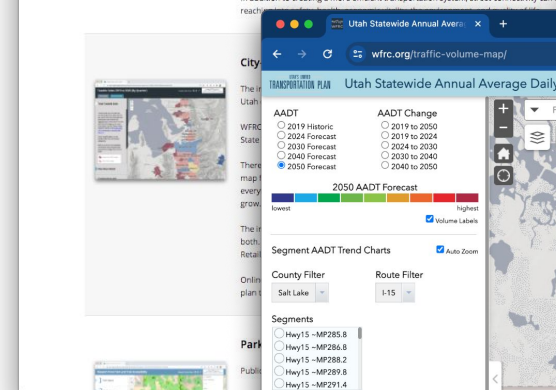
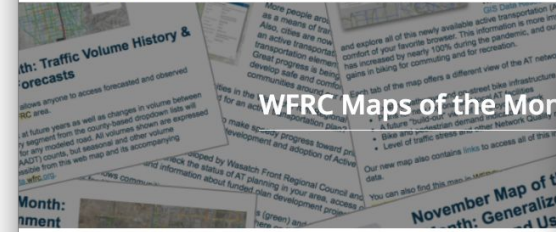
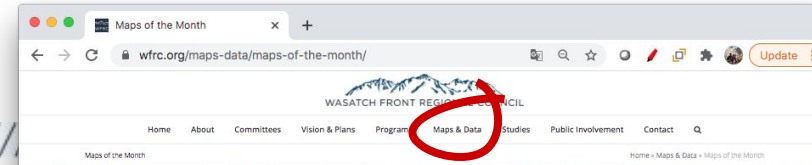
- *How well does our transportation system and land use pattern perform together?*

- Traffic Flow and Congestion Forecast
- Transit Ridership & Other Mode Share
- Bike/Ped & Other Emerging Modes
- Access to Opportunities –
  - Workplaces & Other Key Destinations

# WFRC Analytics Group

## Resources for the Region:

- Map Gallery - [maps.wfrc.org](https://maps.wfrc.org)
- WFRC *Map of the Month* Series
- Travel and Land Use Forecasts
- Regional Data - [data.wfrc.org](https://data.wfrc.org)



# Short-Range Planning and Programming Team



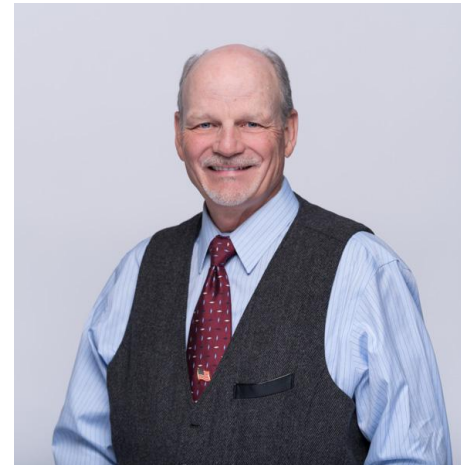
**WAYNE BENNION**

Director of Short-Range Planning  
and Programming



**BEN WUTHRICH**

Senior Transportation Engineer and  
Transportation Improvement  
Program Coordinator



**KIP BILLINGS**

Senior Transportation Engineer  
and Air Quality Analyst

# Transportation Improvement Program (TIP) Overview



CONGESTION MITIGATION AND  
AIR QUALITY PROGRAM



SURFACE TRANSPORTATION  
PROGRAM



TRANSPORTATION  
ALTERNATIVES PROGRAM

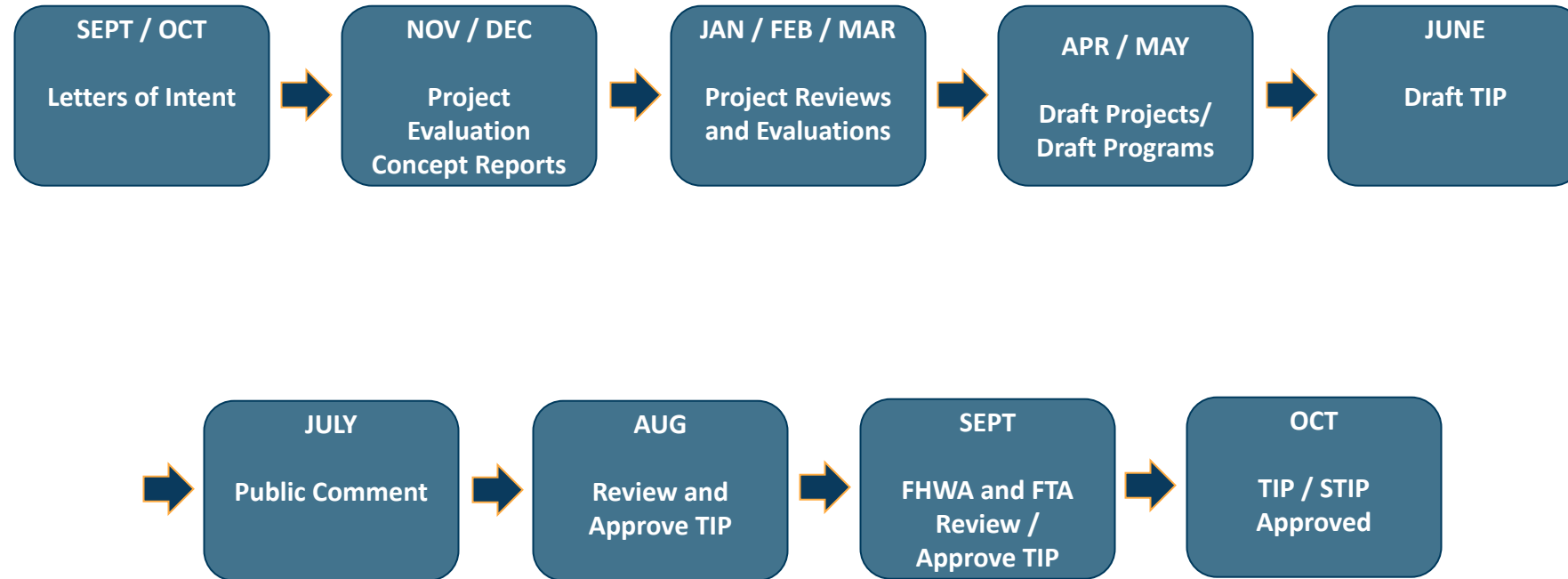


CARBON REDUCTION  
PROGRAM

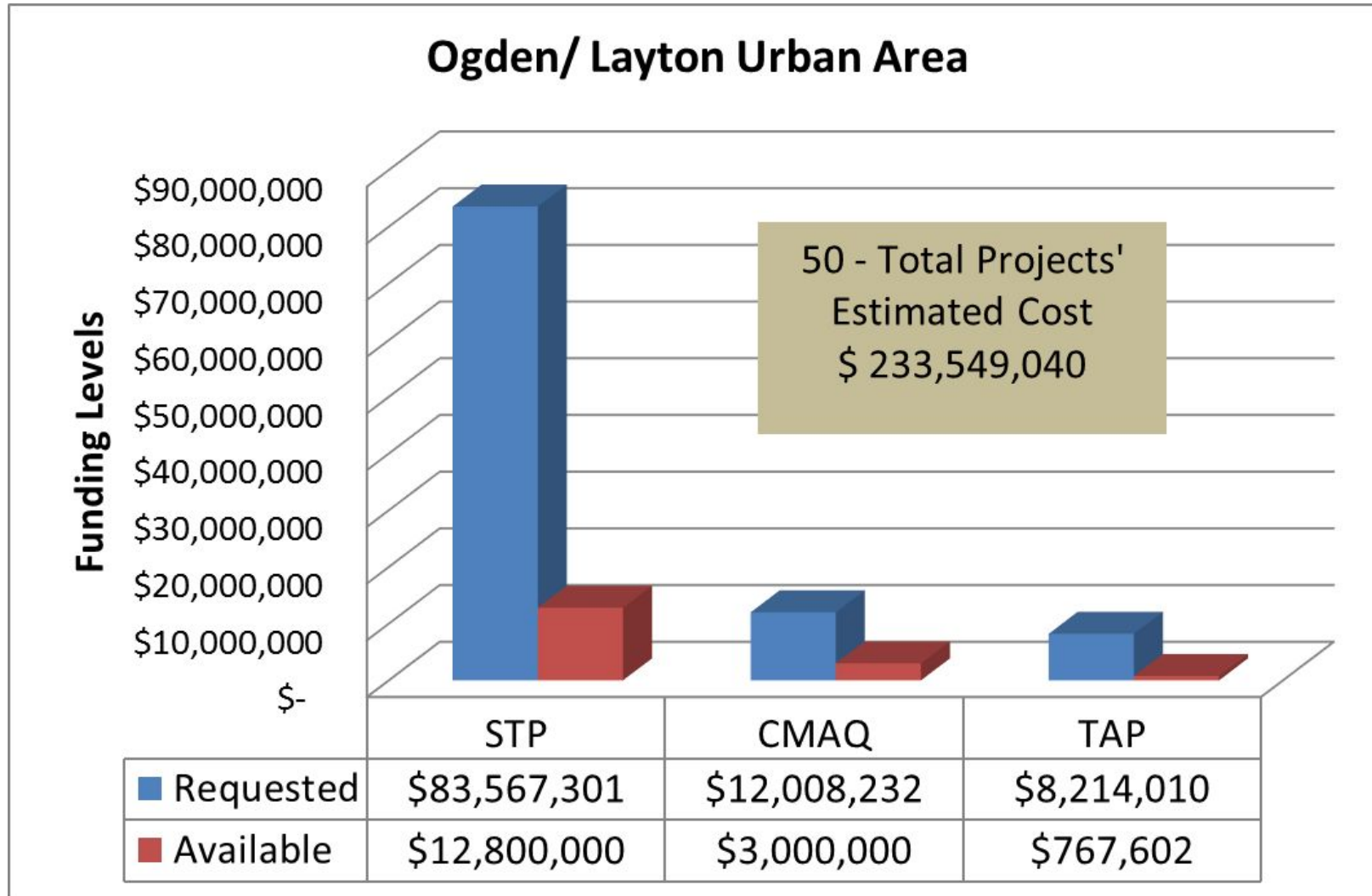
- Six-year program of highway, transit, and other transportation projects for the region
- First four years are financially constrained
- Includes federal, state, and local funded projects
- Updated annually



# Process for New WFRC Projects & the Draft TIP

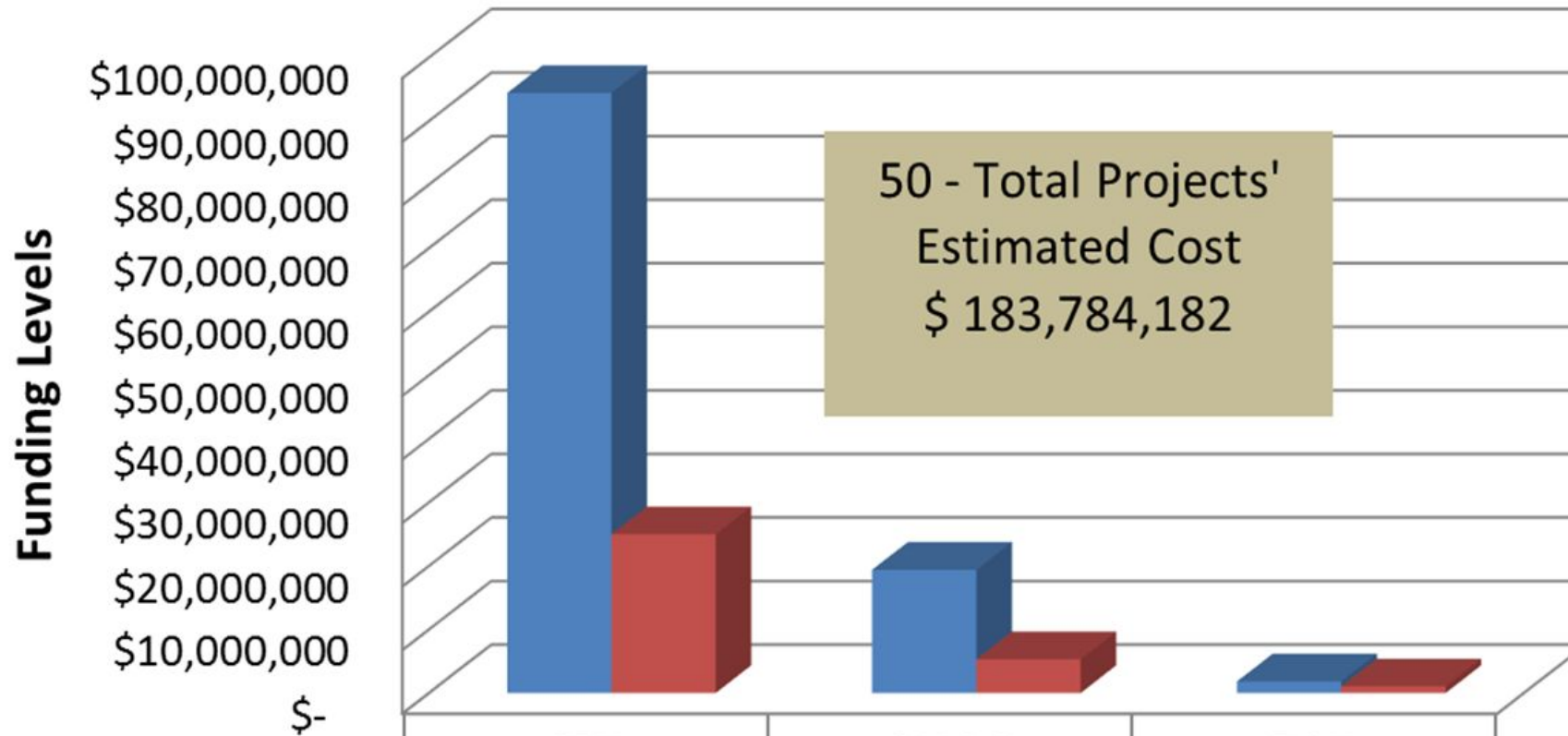


# Ogden/ Layton Urbanized Area



# Salt Lake Region Urbanized Area

## Salt Lake/ West Valley Urban Area



	STP	CMAQ	TAP
Requested	\$94,415,934	\$19,383,554	\$1,834,347
Available	\$24,984,679	\$5,300,000	\$1,048,911



# Utah Nonattainment and Attainment Areas - 2024

## Particulate Matter (PM<sub>10</sub>)

- SL County
- Ogden
- *UT County*



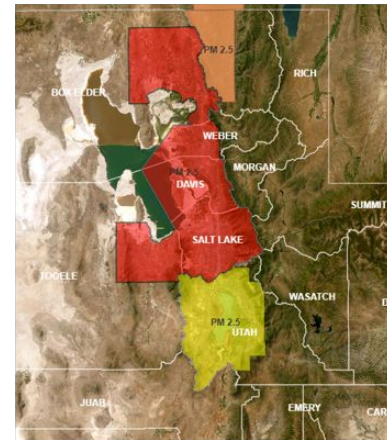
## Carbon Monoxide (CO)

- Maintenance Areas
- *Provo*



## Particulate Matter (PM<sub>2.5</sub>)

- BE County
- WE County
- DA County
- SL County
- TO County
- UT County*
- CA County*



## Ozone (O<sub>3</sub>)

- WE County
- DA County
- SL County
- TO County
- *UT County*



# Attainment vs. Conformity

---

- **Attainment**

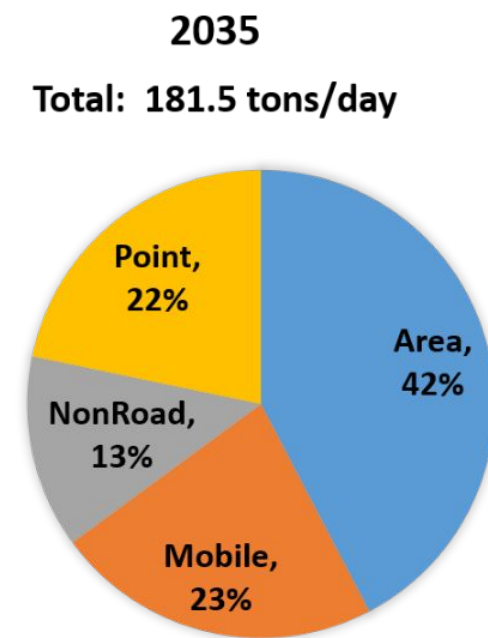
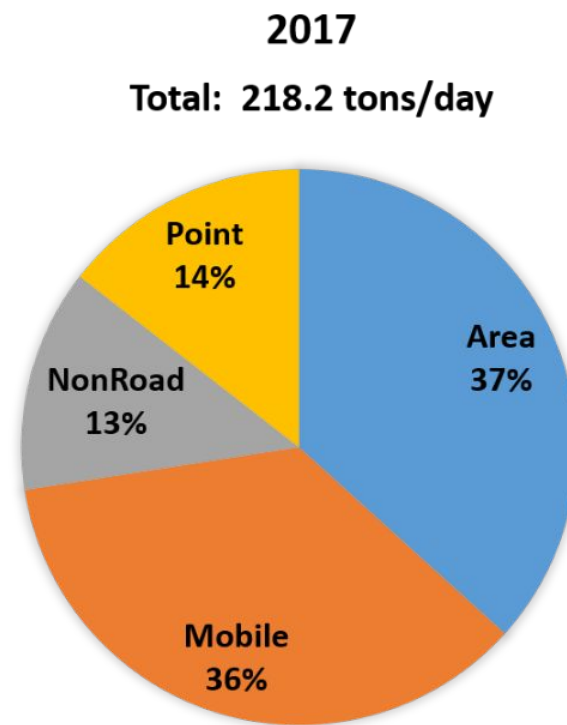
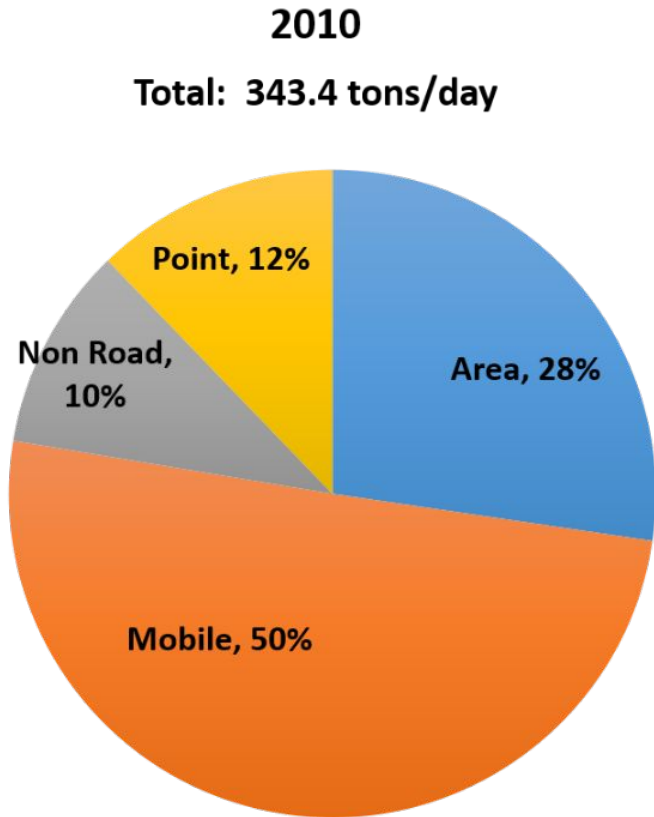
- Is the air pollution exceeding federal health standards?
- Air quality monitors
- Pollution concentration ( $\mu\text{g}/\text{m}^3$  or ppb)
- State prepares State Implementation Plan (SIP)

- **Conformity (transportation)**

- Are mobile source emissions within SIP limits?
- Modeling and analysis
- Emission quantity (tons/day)
- WFRC prepares conformity analysis

# PM2.5 Emissions by Source

Tons/day: PM2.5, NOx, VOC, NH3, SO2



Source: Salt Lake PM2.5 Maintenance Plan 2019, Salt Lake PM2.5 SIP 2013.

# Community & Economic Development Team



**MEGAN TOWNSEND**  
Community and Economic  
Development Director



**BYRON HEAD**  
Community Planner



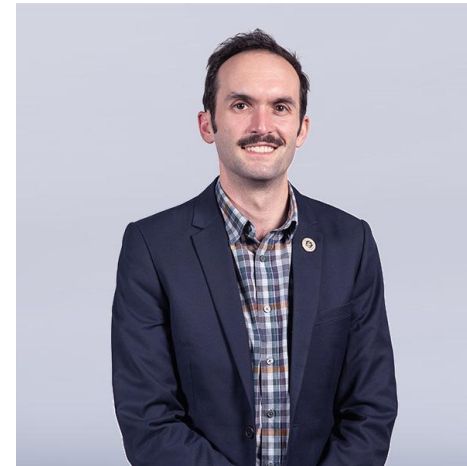
**TIM WATKINS**  
Community Planner



**CHRISTY DAHLBERG**  
Community Development  
Planner



**MARCIA WHITE**  
Regional Economic  
Development Planner



**MATT RYAN**  
Community Development  
Planner

# Community & Economic Development Role

We are here to help you implement the Wasatch Choice Vision through...

planning technical assistance

**Transportation and Land Use Connection (TLC)**  
**& Station Area Planning (SAP)**



economic development

**Wasatch Front Economic Development District (WFEDD)**  
**& Comprehensive Economic Development Strategy (CEDS)**



... and various other resources

**Small Cities Community Development Block Grant (CDBG)**  
**& general plan assistance, etc.**



# Transportation and Land Use Connection Program



TRANSPORTATION  
AND  
LAND USE CONNECTION

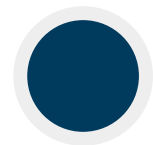
Technical assistance for:



**PLANS, STUDIES**



**POLICIES,  
ORDINANCES**



**IMPLEMENTATION  
STRATEGIES**



...implementing Wasatch Choice and achieving community objectives

**PARTNERS:**



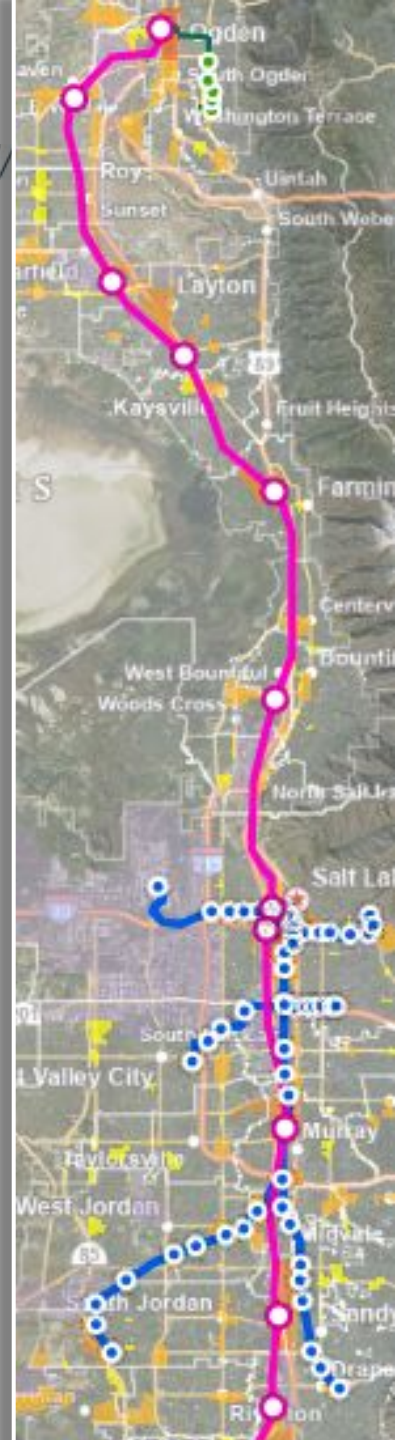
# Station Area Planning

## GOALS:

1. Increase the availability and affordability of housing
2. Promote sustainable environmental conditions
3. Enhance access to opportunities
4. Increase transportation choices and connections

•  $\frac{1}{2}$  mile around Rail stations


•  $\frac{1}{4}$  mile around BRT stations



# Wasatch Front Economic Development District

*“Support economic development plans, promote long-term **economic competitiveness**, and attract **federal monies** in order to implement local plans.”*





Competitive grant program eligible to the jurisdictions within Morgan, Tooele, and Weber counties (excluding Ogden City). The purpose is to assist in development of viable communities by providing decent housing and a suitable living environment, principally for persons of low and moderate incomes. The anticipated 2024 funding is ~\$1,000,000.

### Eligible activities include:

- Water/Sewer Upgrades
- ADA Upgrades
- Street Improvements
- Fire/Safety Equipment
- Curb/Gutter/Sidewalks
- Housing Rehab
- Rental Assistance
- Senior/Community Centers
- Public Service Facilities

Source: Skilled Services LLC

## Small Cities Community Development Block Grant (CDBG)



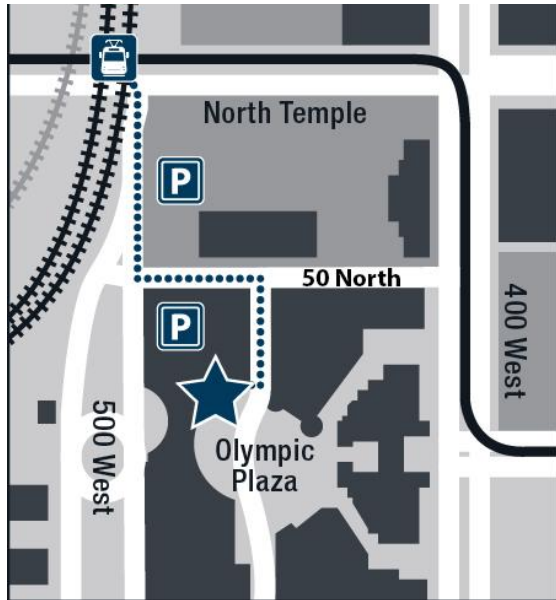
# Our Location: 41 North Rio Grande Street, SLC 84101



We are located at the Gateway, at the north end near the Olympic Fountain.

If you're driving, enter [the building's multi-level parking garage](#) from 50 North, in between 400 W and 500 W.

Take the elevator or stairs to the 2nd floor, enter the red brick building, and our suite is at the end of the hall.



- Public transit users: We will provide a single-use UTA transit pass
- Drivers: We offer parking validation
- Bikers: We have indoor bike racks for your convenience



## Follow us and stay informed!



/wasatch-front-regional-council



@wasatchcouncil



/wasatchfrontregionalcouncil



@wfrcvideo



/wasatchfrontregionalcouncil



/wfrc

## WFRC New Member Orientation

February 22, 2024 // [wfrc.org](https://wfrc.org)

# Civil Rights Training Video

---

Title VI of the Civil Rights Act was enacted as part of the landmark Civil Rights Act of 1964. It prohibits discrimination on the basis of race, color, and national origin in programs and activities receiving federal financial assistance.