

STATION AREA PLANNING

ACTIONS–Certify:

- **Station Area Plan in Clearfield**
- **Station Area Plan in Murray & Millcreek**
- **Resolution in West Bountiful**

Council Meeting | August 22, 2024

Meg Townsend, CED Director



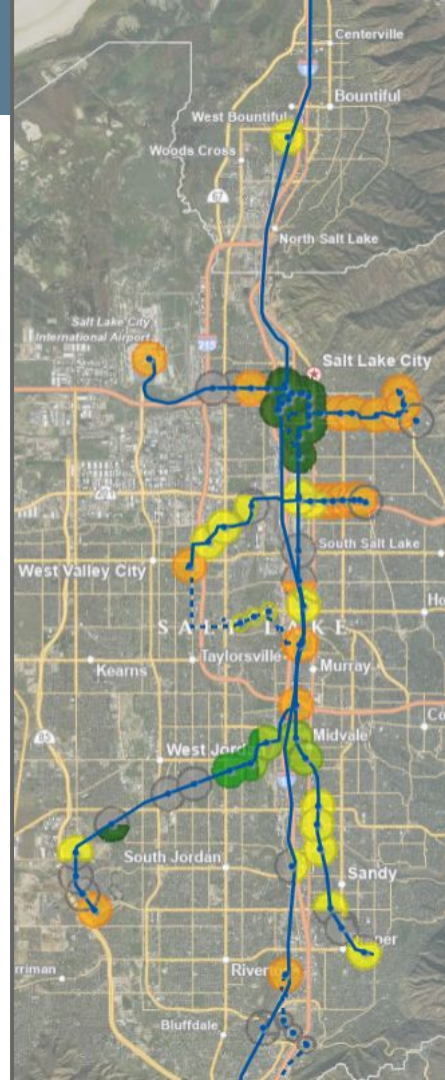
WASATCH FRONT REGIONAL COUNCIL

GOALS:

- Increase the availability and affordability of housing
- Promote sustainable environmental conditions
- Enhance access to opportunities
- Increase transportation choices and connections

$\frac{1}{2}$ mile around Rail stations

$\frac{1}{4}$ mile around BRT stations



Station Area Planning Requirements

SAP COMPONENTS

1. Vision
2. Map (rail: ½ mile radius, or BRT: ¼ mile radius)
3. 5-Year Implementation Plan
4. Statement describing how 4 objectives are met
5. Public / Stakeholder Engagement

MPOs administer technical assistance in partnership with UTA | \$5M from GOEO, shared with MAG

Of the 127 station areas*



26

Stations where station area planning has not begun



21

Stations with planning that pre-dates HB462



52

SAPs being prepared for adoption



4

SAPs submitted for certification review



24

SAPs certified by MPO
see list of stations/plans below

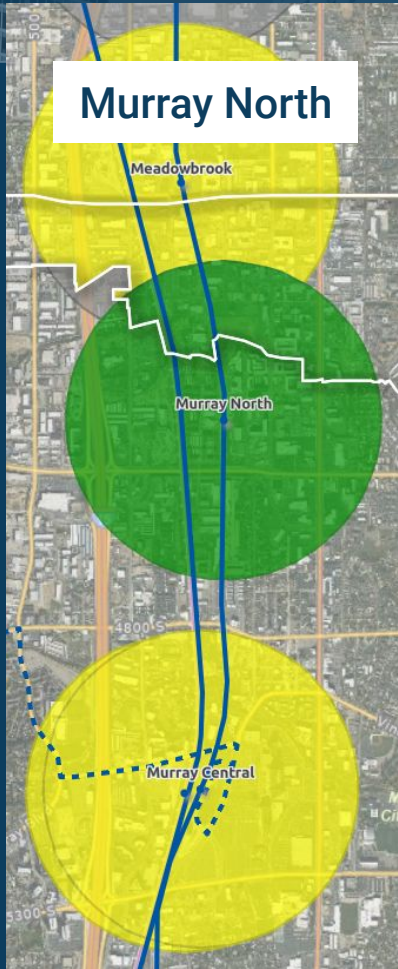


25 applications for SAP technical assistance received

Clearfield



Murray North



West Bountiful



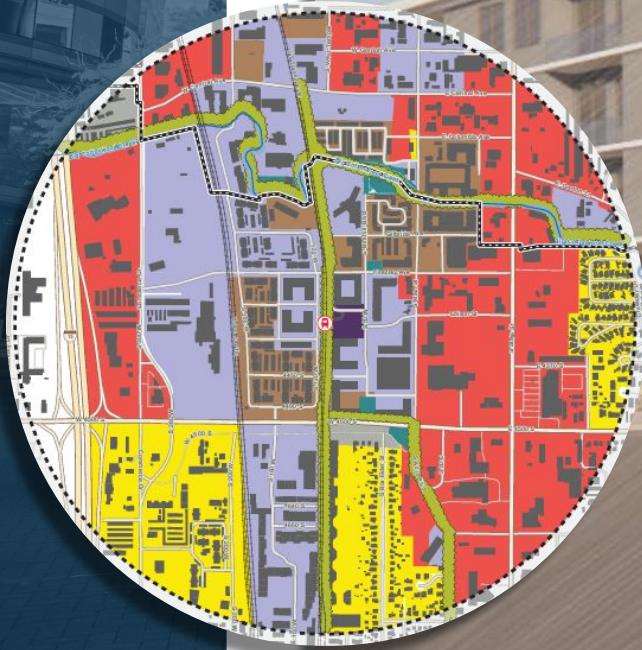
CLEARFIELD CONNECTED 2024

STATION AREA PLAN + DESIGN GUIDELINES

Adopted May 28, 2024



MURRAY NORTH STATION AREA PLAN

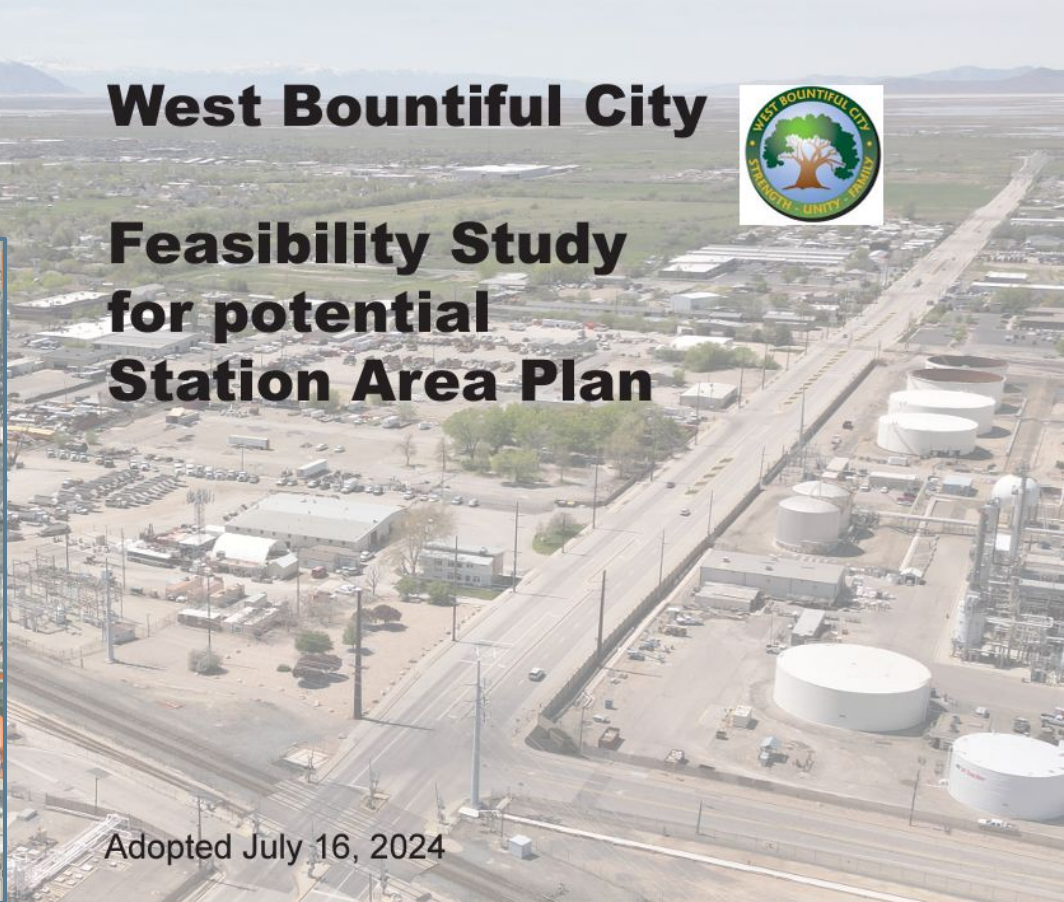




West Bountiful City



Feasibility Study for potential Station Area Plan



Adopted July 16, 2024

**“I move to certify the Clearfield
Connected Station Area Plan, the
Murray North Station Area
Plan including Millcreek and Murray,
and the West Bountiful Woods Cross
Station Area Resolution.”**



WASATCH CHOICE VISION

Fall 2024 Workshops

