



2023-2050 Regional Transportation Plan

WFRC// January 26, 2023

Wasatch Choice Vision



Economic Development

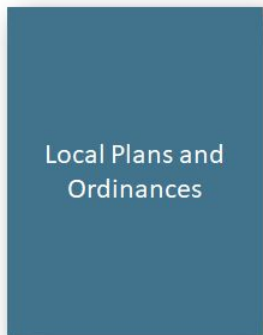
Comprehensive
Economic Development
Strategy



Land Use

Transportation
and Land Use
Connection

Local Plans and
Ordinances



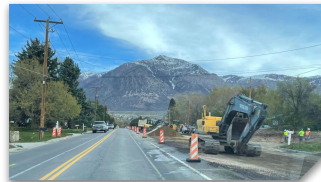
Transportation

Regional
Transportation
Plan



-  Livable and healthy communities
-  Access to economic and educational opportunities
-  Manageable and reliable traffic conditions
-  Quality transportation choices
-  Safe, user friendly streets
-  Clean air
-  Housing choices and affordable living expenses
-  Fiscally responsible communities and infrastructure
-  Sustainable environment
-  Ample open space and recreational opportunities

What is included in the Regional Transportation Plan?



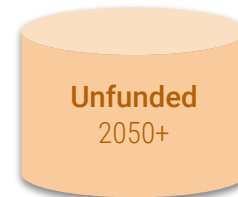
Cities &
Counties



U T A

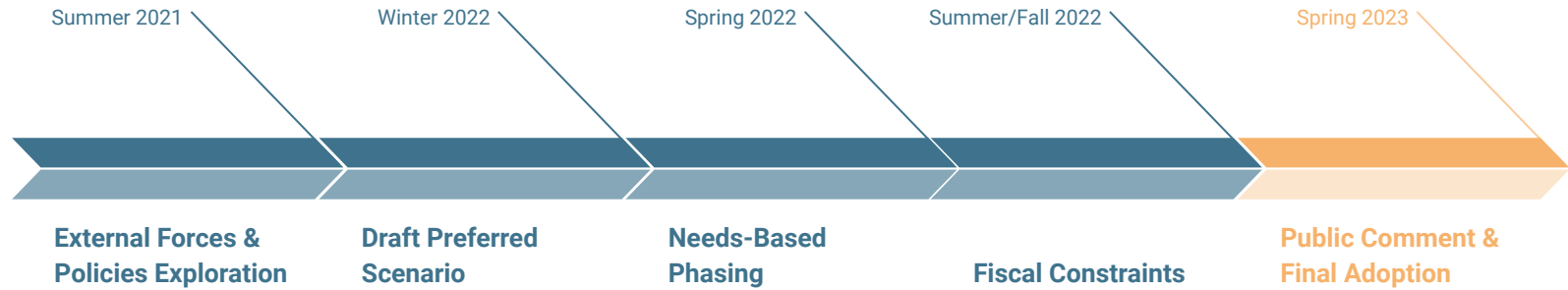


Regional Transportation Plan Overview



OTHER TOP
PRIORITIES

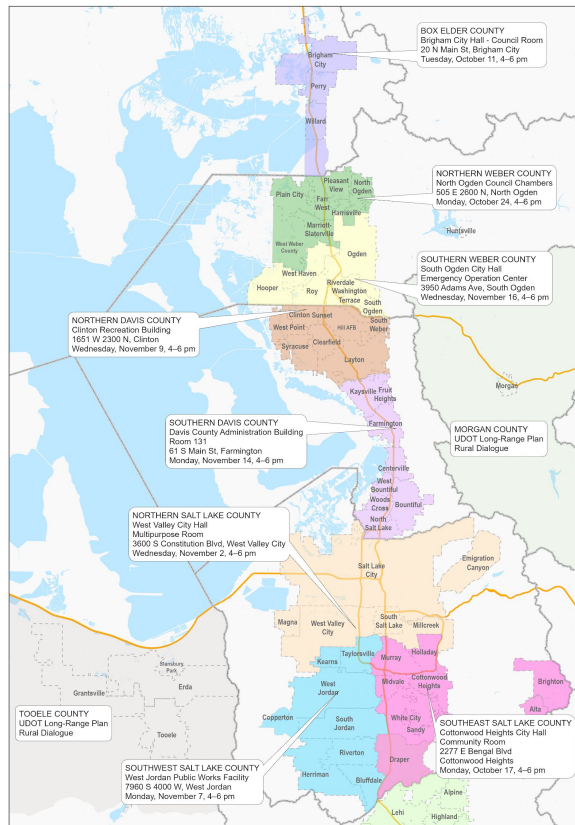
RTP Development Timeline



2022 Fall Outreach Efforts



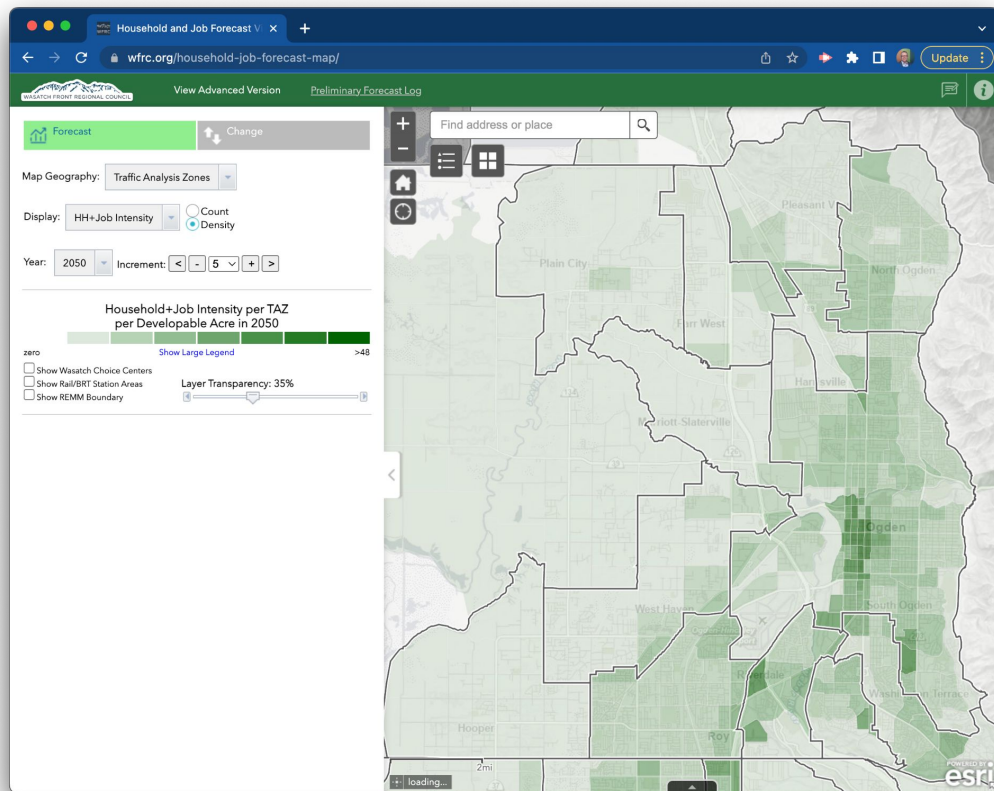
Wasatch Choice Transportation Workshops Fall 2022

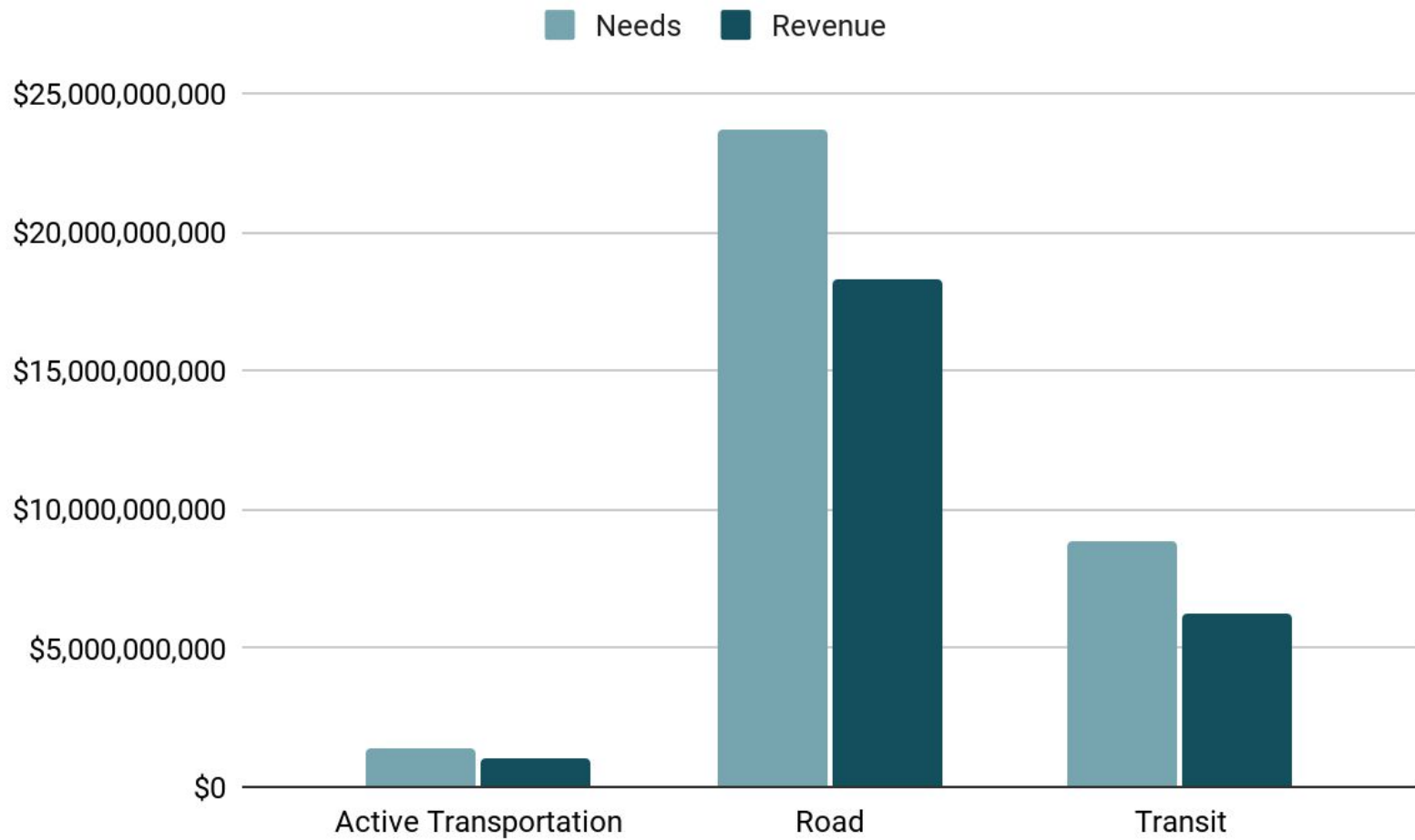


- » WFRM Committees
- » Transportation, land use, environmental, and community groups
- » Universities and community colleges
- » Landholding and industry groups
- » Chambers of Commerce and Local Businesses
- » Resource Agencies

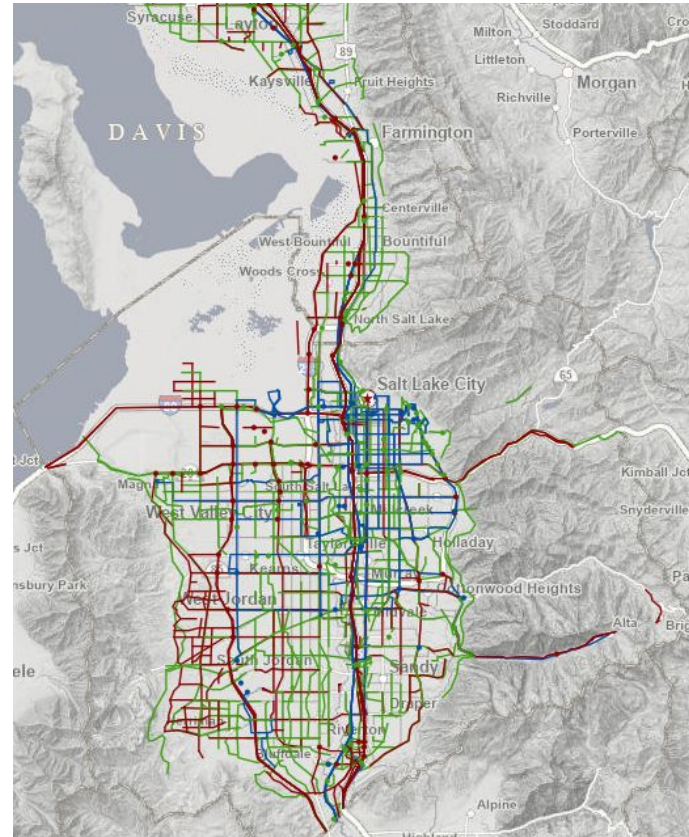
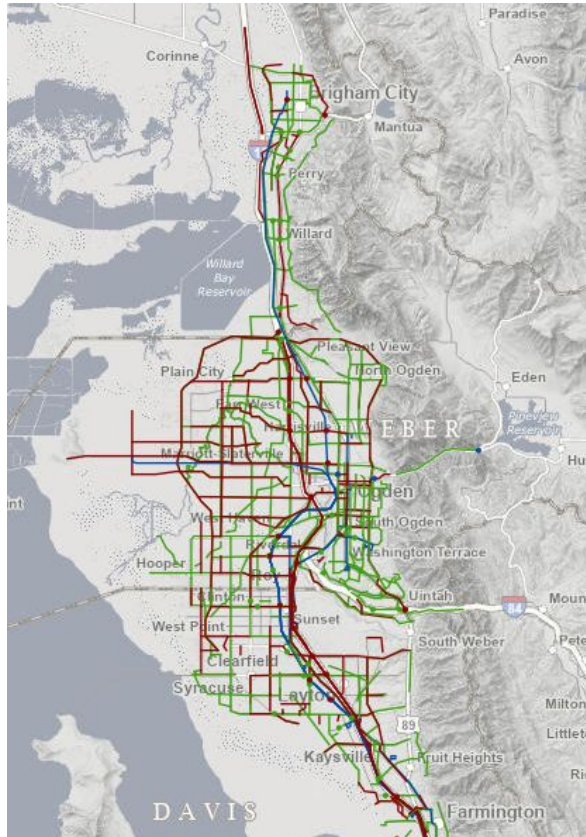
Draft Household and Jobs Forecast

- » This forecast is widely used:
 - Regional Transportation Plan
 - Transportation studies
 - Local planning
 - Water districts
 - School districts
- » Developed based on:
 - Existing market conditions
 - Local land use policies
 - The Wasatch Choice vision
 - Stakeholder feedback



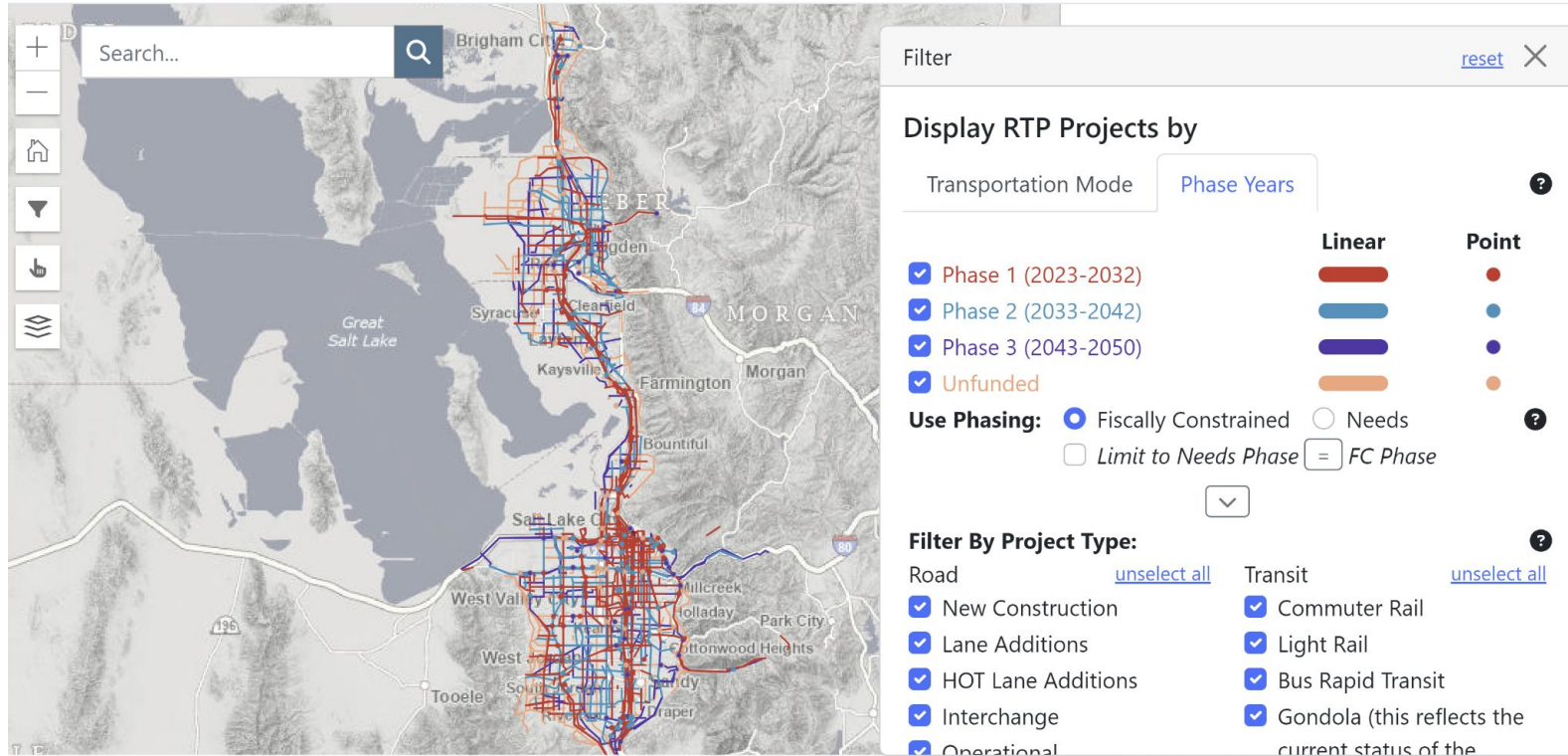


Roadway + Active Transportation + Transit RTP Projects



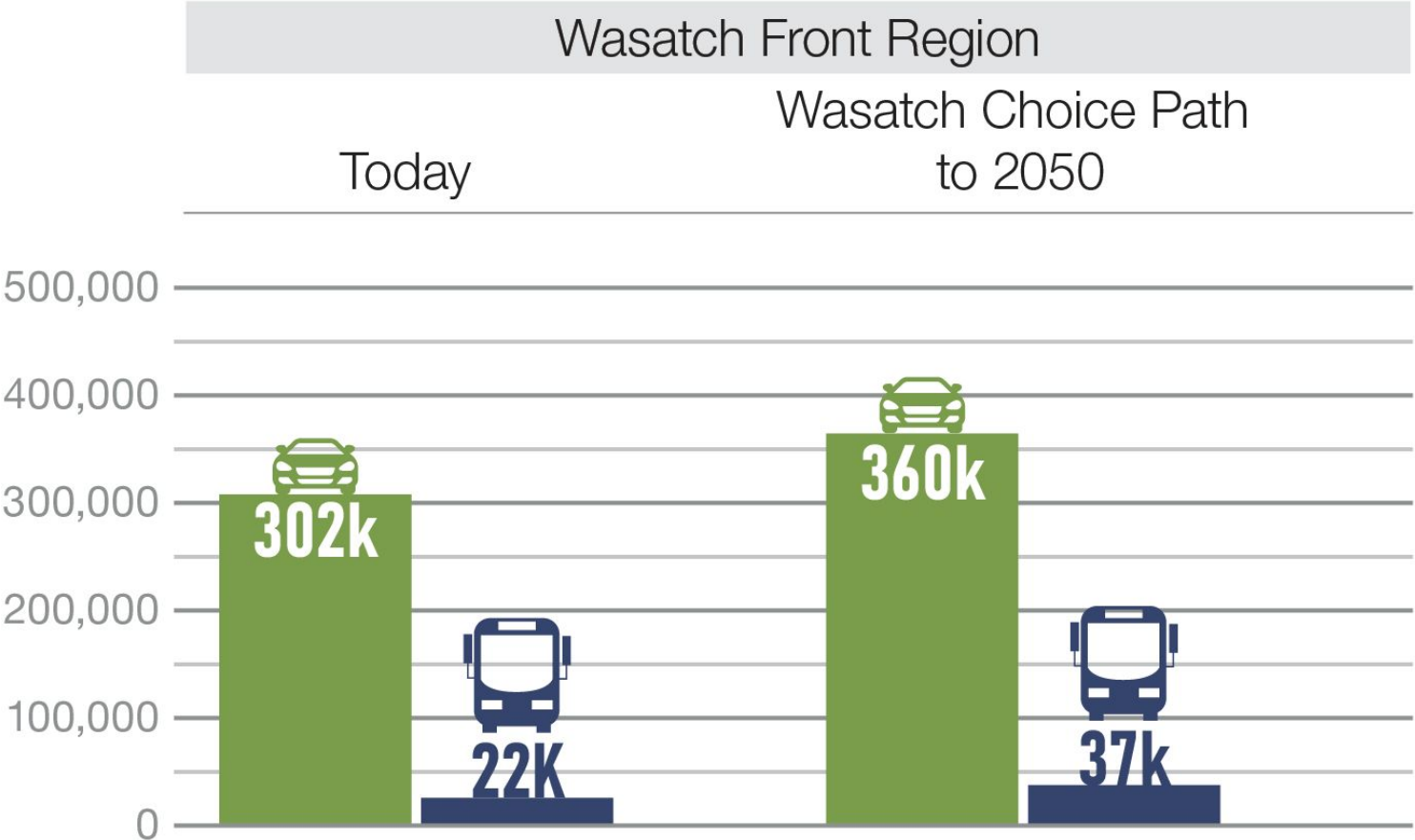
2023-2050 RTP Interactive Map

Draft 2023 RTP Map



wfrc.org/rtp-2023-draft-map/

Number of Jobs Accessible to the Average Household

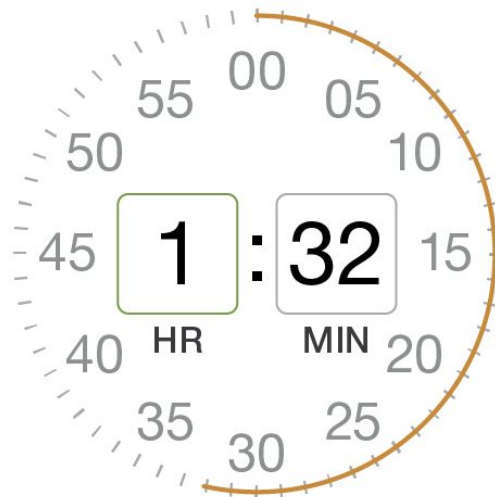
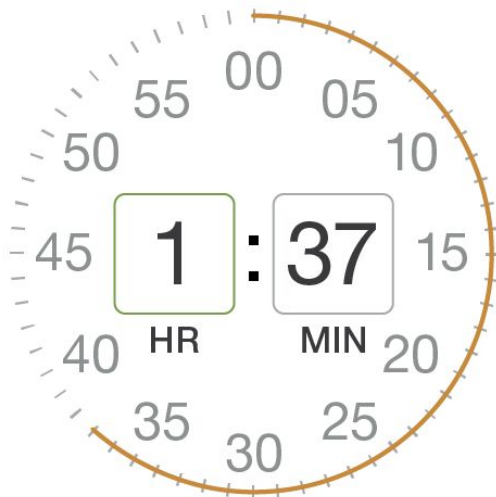


Minutes Driving per Household per Day

Wasatch Front Region

Today

Wasatch Choice Path
to 2050



Vehicle Miles Traveled per Household per Day

Wasatch Front Region

Today

Wasatch Choice Path
to 2050



Next Steps



Winter 2023

2023-2050 RTP and AQ
Memorandum #41 -
Public comment period:
Jan 27th - Feb 26th
RTP Documentation



Spring 2023

RGC TACs, RGC, and
Regional Council Review -
March/May
May 25, 2023 adoption



Summer/Fall 2023

Utah's Unified Plan
Coordination and Outreach

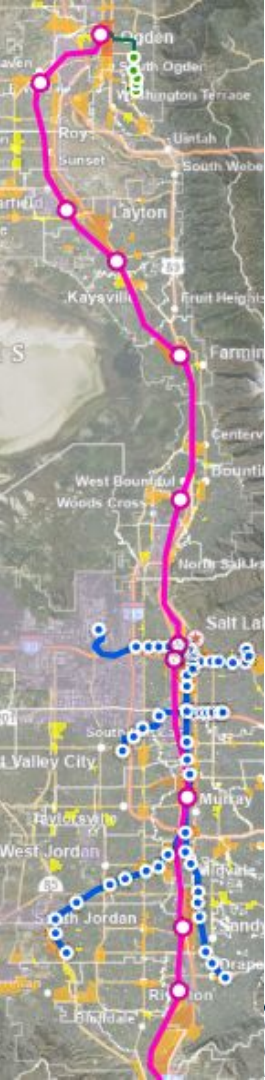
Draft Motion to the Regional Council

“I move that we release the draft phased and financially constrained 2023-2050 Regional Transportation Plan and draft Air Quality Memorandum #41 for public comment from January 27, 2023 to February 26, 2023.”



2023-2050 Regional Transportation Plan

WFRC // January 26, 2023



STATION AREA PLANNING

- 1. SAP Overview and Progress Update**
- 2. ACTION: Certification of Ballpark TRAX SAP**

WFRC January 26th, 2023

Megan Townsend, Community and Economic Development Director
Wasatch Front Regional Council



Station Area Plan Goals



STATION AREA PLAN GOALS

1. **Increase** the availability and affordability of **housing**
2. Promote **sustainable environmental conditions**
3. Enhance **access to opportunities**
4. Increase **transportation choices** and connections



Station Area Plan Components



SAP COMPONENTS

- Vision
- Map (**rail: ½ mile radius or BRT: ¼ mile radius**)
- 5-Year Implementation Plan
- Statement describing how 4 objectives are met
- Public / Stakeholder Engagement

**MPOs administer technical assistance in partnership with UTA
(\$5M from GOEO over 2 years)**

SAP Progress Update

Of the 88 station areas:



22

Stations where station area planning has not yet been initiated



38

Stations with plans that pre-date HB462



25

Stations with plan(s) being prepared for adoption



1

SAPs adopted by municipality, pending SAP certification submission



1

SAPs submitted for certification review



1

*SAPs certified by MPO
**Farmington
FrontRunner Station***



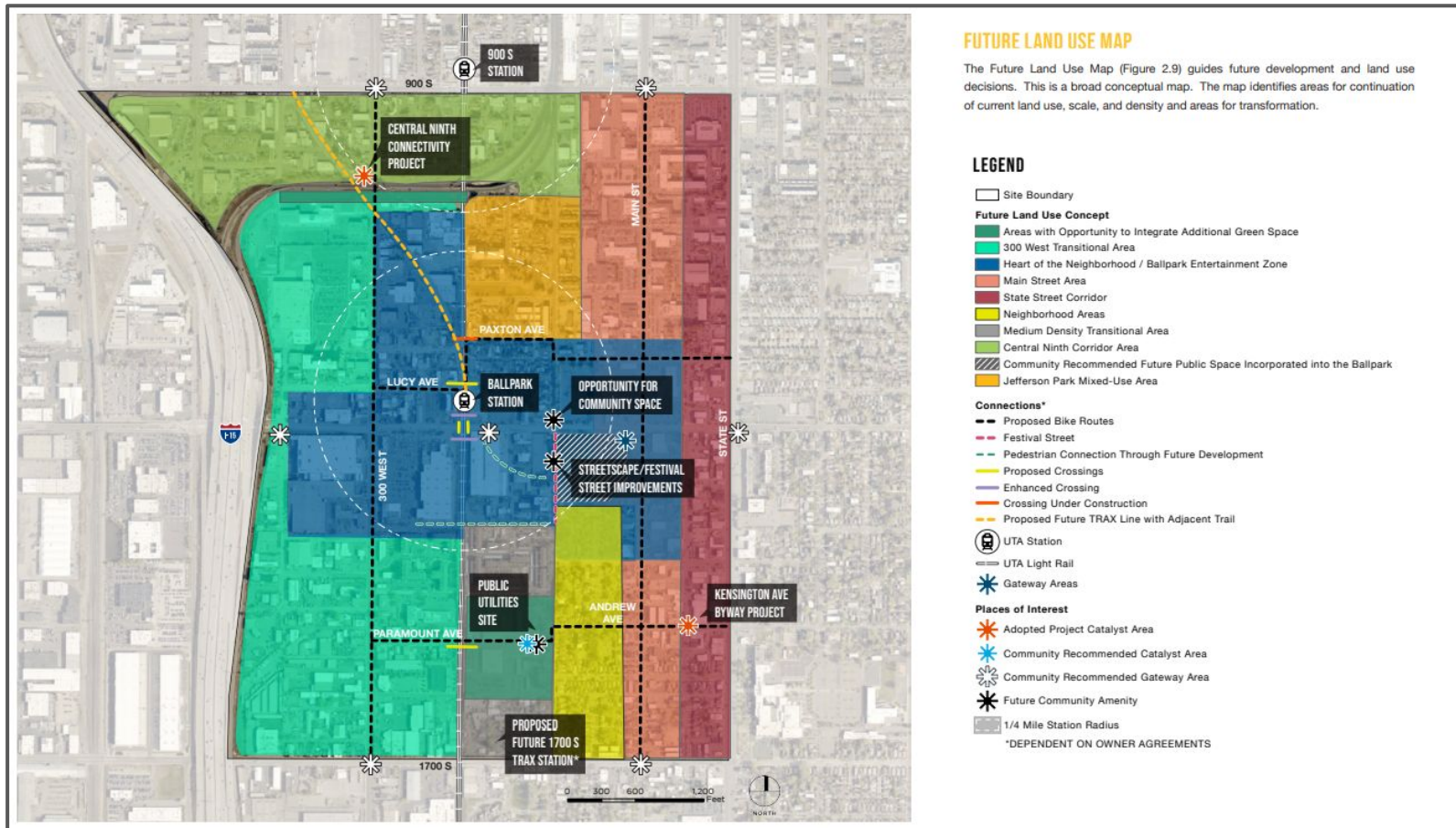
12 applications for SAP technical assistance received



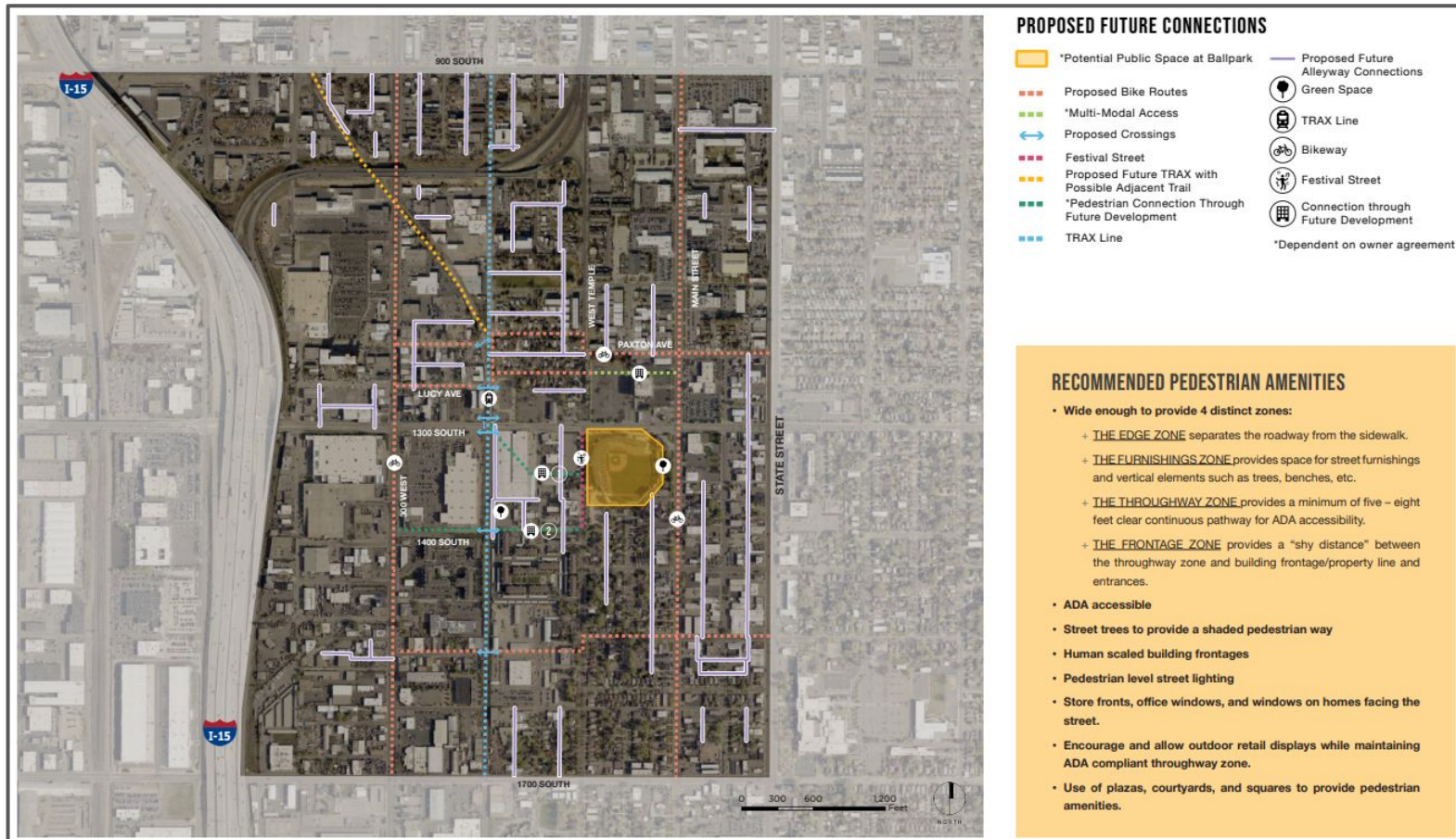
\$1.535 million

in project funding through SAP technical assistance awards

Station Area Plan Certification: BALLPARK



Station Area Plan Certification: BALLPARK



Staff Findings, BALLPARK SAP

Station Area Plan Certification Submission Form



Prepared by Salt Lake City in partnership with Wasatch Front
Regional Council and the Utah Transit Authority

2022) requires cities with a fixed guideway transit station
on of elements of existing station area plans that fulfill
form addresses the statutorily required elements. Line-
relevant.

es to submit their Station Area Plan to the Metropolitan
e Plan or components fulfilling the requirements of the
es the submission of an adopted resolution stating that
ry requirements.

Staff Findings, BALLPARK SAP

RESOLUTION OF THE WASATCH FRONT REGIONAL COUNCIL CERTIFYING THAT THE BALLPARK STATION AREA PLAN IS IN COMPLIANCE WITH APPLICABLE STATUTORY REQUIREMENTS

WHEREAS, State statute, pursuant to HB462, requires that cities with “fixed guideway public transit” are required to plan ½ mile radius around a rail (FrontRunner, Trax, Streetcar) station, and ¼ mile radius around a bus rapid transit (which uses a separate right-of-way) station, including all of the components within the statute, and

WHEREAS, the statute allows for cities to adopt resolutions describing impracticabilities in fulfilling

2. A copy of this certification resolution shall be provided to Salt Lake City.

Chair
Wasatch Front Regional Council

Andrew S. Gruber
Executive Director
Wasatch Front Regional Council

DATE: January 26th, 2023

WASATCH FRONT REGIONAL COUNCIL Station Area Plan Certification Checklist

Ballpark TRAX SAP: CHECKLIST

Satisfied?

includes a statement that explains how the station area plan promotes the following 4 objectives



1. increasing the availability and affordability of housing, including moderate income housing



2. promoting sustainable environmental conditions



3. enhancing access to opportunities



4. increasing transportation choices and connections



Includes Station Area Vision



Station Area Vision “shall include”

consistent with Objectives listed above



Station Area Plan Certification: BALLPARK

SUGGESTED MOTION:

“I make a motion to certify the Salt Lake City
Ballpark Station Area Plan.”