

Wasatch Choice 2023-2050 Update

WFRC Council // March 24, 2022

Wasatch Choice Vision



Economic Development

Comprehensive
Economic Development
Strategy



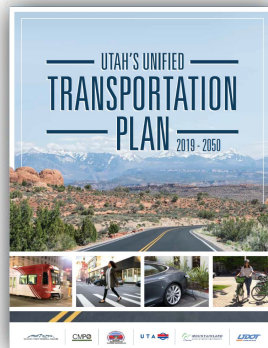
Land Use

Transportation
and Land Use
Connection

Local Plans and
Ordinances

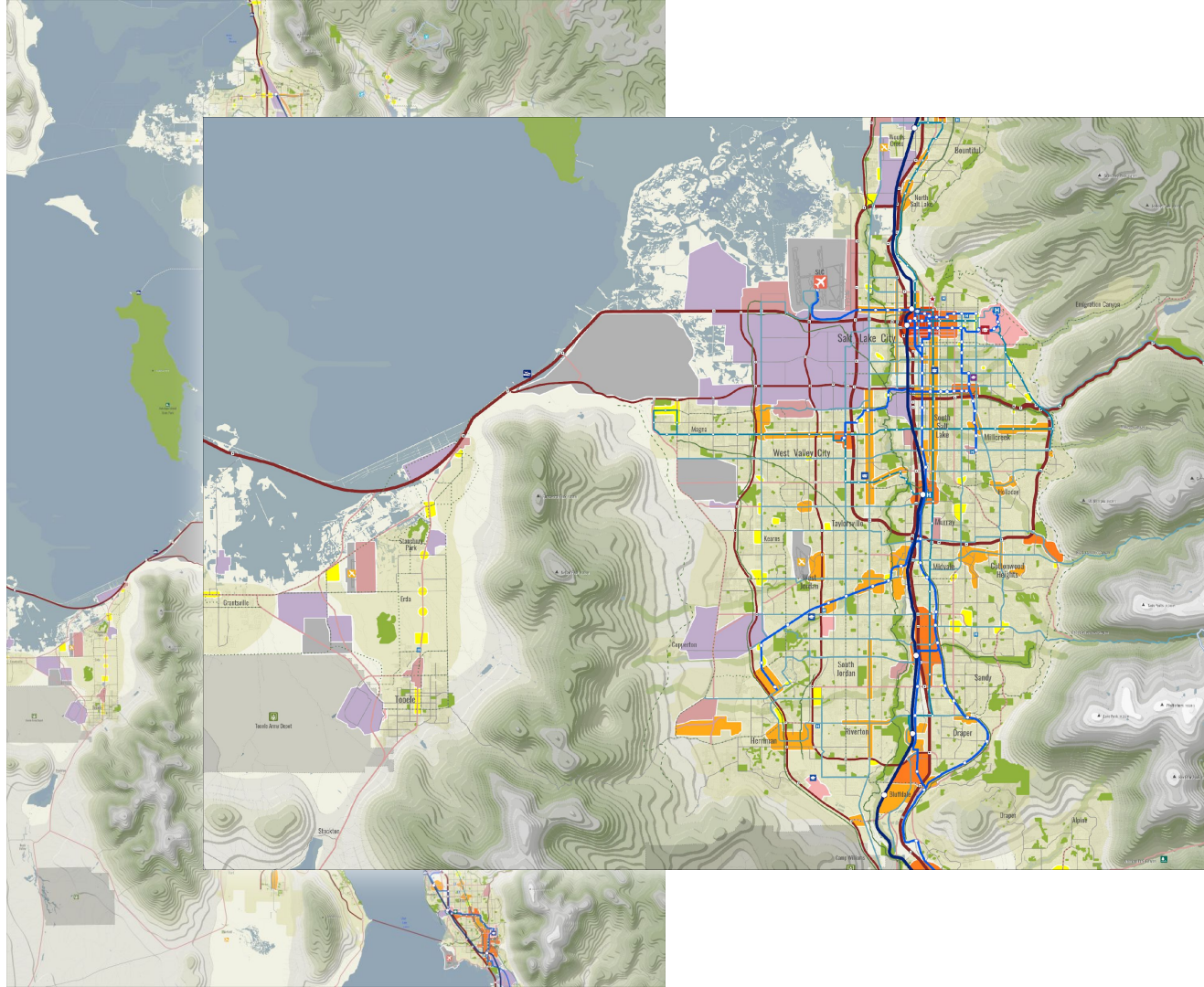
Transportation

Regional
Transportation
Plan



-  Livable and healthy communities
-  Access to economic and educational opportunities
-  Manageable and reliable traffic conditions
-  Quality transportation choices
-  Safe, user friendly streets
-  Clean air
-  Housing choices and affordable living expenses
-  Fiscally responsible communities and infrastructure
-  Sustainable environment
-  Ample open space and recreational opportunities

Wasatch Choice



Station Area Planning (SAP)



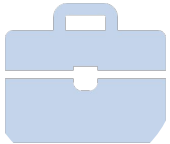
SAP Objectives



Increase the availability and affordability of housing



Promote sustainable environmental conditions



Enhance access to opportunities

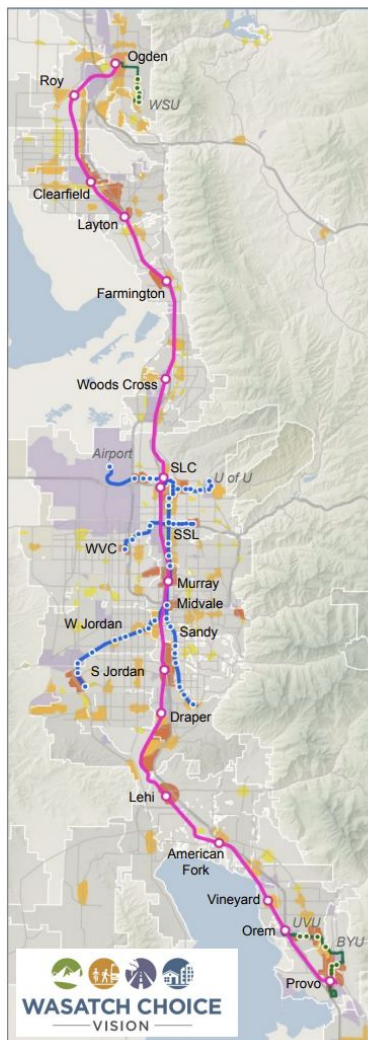


Increase transportation choices and connections

HB462

Station Area Plan

Locations



City	Stations & Center Types					
Ogden						
Roy						
Clearfield						
Layton						
Farmington						
Woods Cross						
Salt Lake City*						
South Salt Lake*						
West Valley City						
Murray						
Midvale						
West Jordan						
Sandy						
South Jordan*						
Draper						
Lehi						
American Fork						
Vineyard						
Orem						
Provo						

* some station areas include portions of adjacent cities

Key:

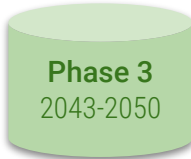
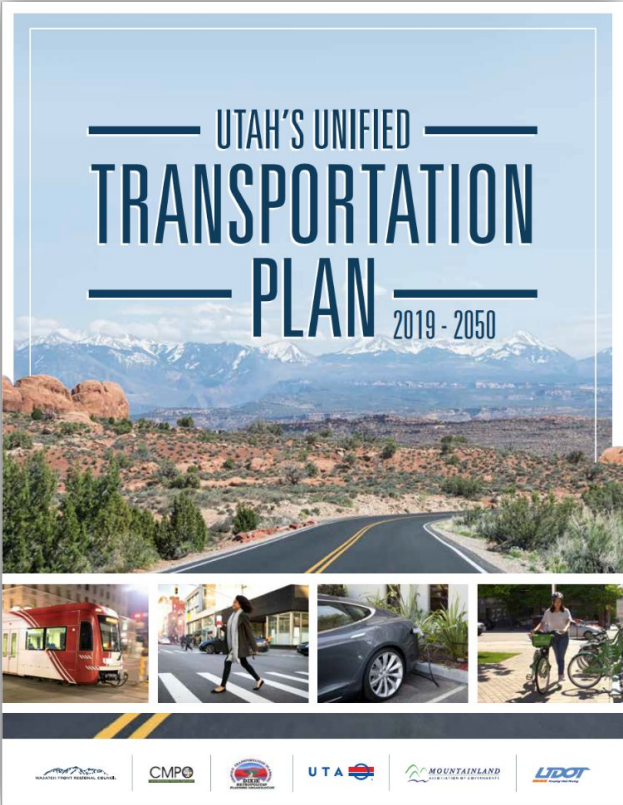
Transit Station Type:

- FrontRunner
- TRAX/Streetcar
- BRT (with dedicated lanes)

Wasatch Choice Center Type:

- is within Metropolitan Center
- is within Urban Center
- is within City Center
- is within Neighborhood Center
- is within Employment Area

Regional Transportation Plan Overview



\$1.2 Billion for Transportation Infrastructure



Accelerate Road Projects

\$721.2 million



FrontRunner

\$232 million (bond replacement)
+ \$75 million



Active Transportation

\$40 million



Point of the Mountain Transit

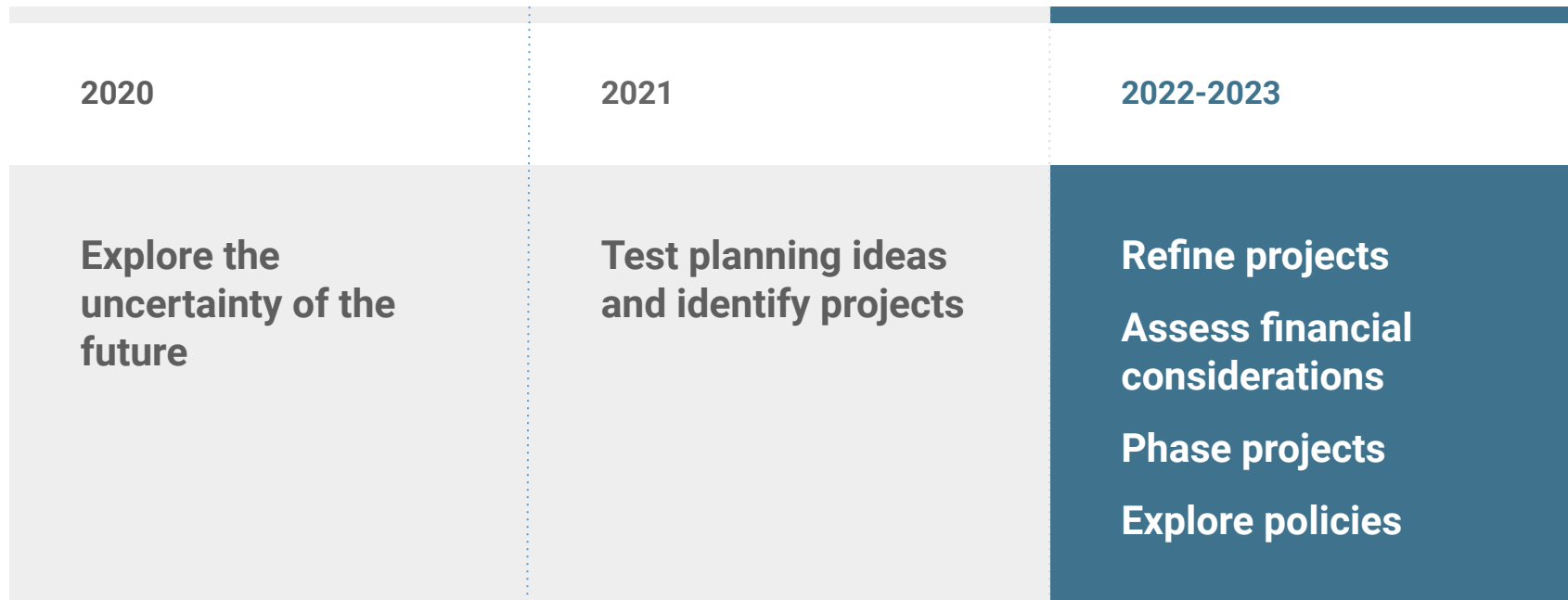
\$75 million



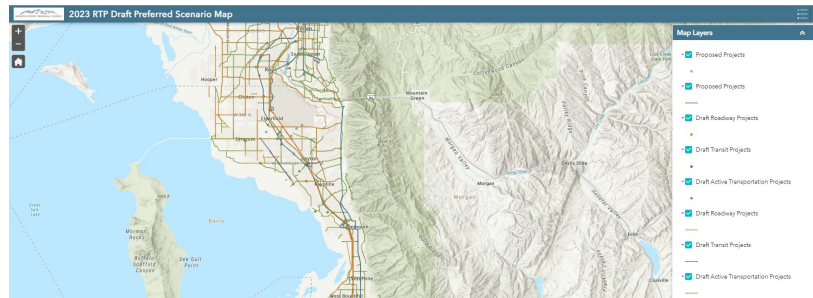
Other Projects

\$98.8M

Updating Wasatch Choice: Where are we?



Broad engagement



Water
Districts

Public

State
Agencies

Private Sector

Federal
Agencies

Community
Organizations

UTA

School
Districts

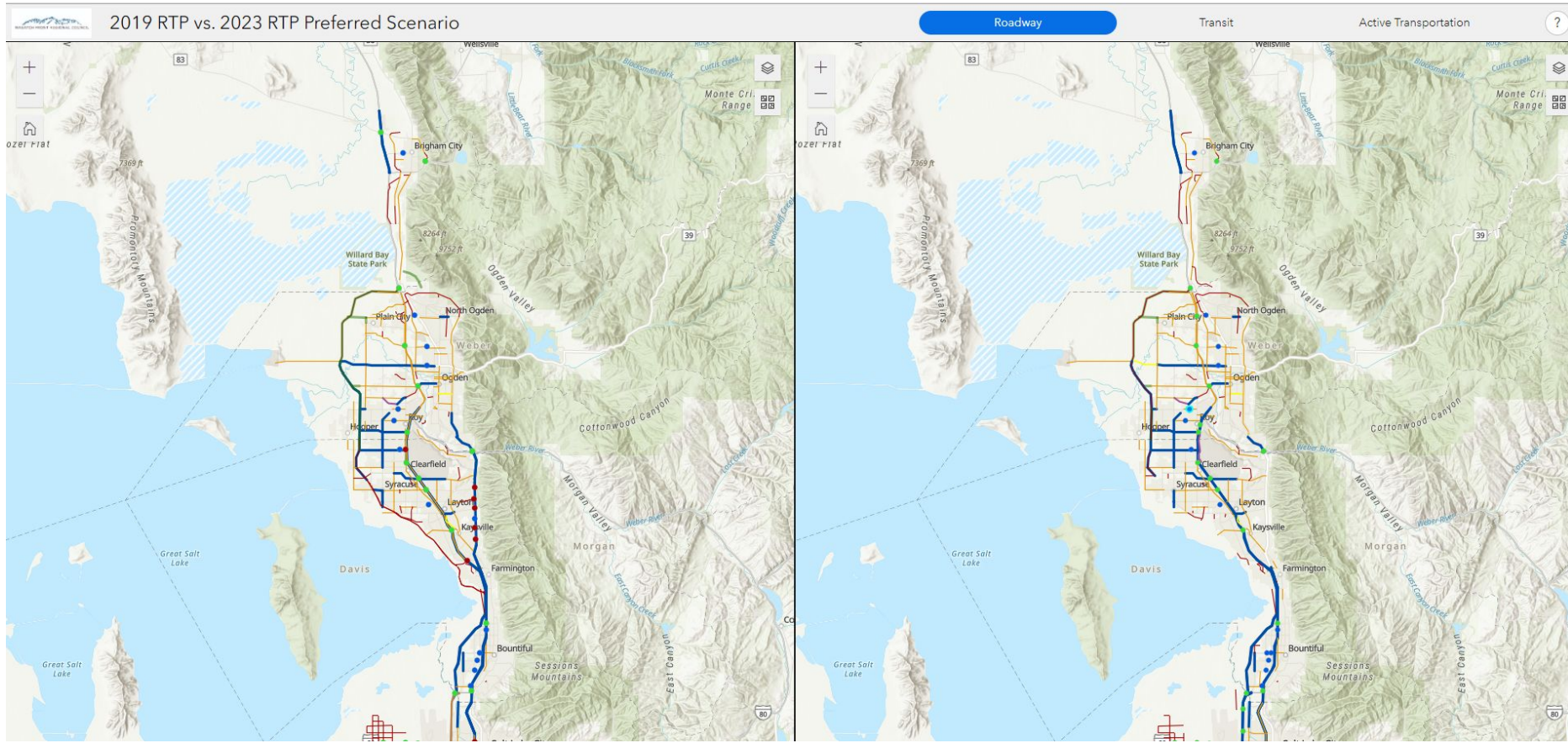
Local
Communities

Higher
Education

UDOT

Major
Landowners

Preferred Scenario



Active Transportation Committee





TRANSPORTATION — AND — LAND USE CONNECTION

2022 Awards

March 17th, 2022 | Megan Townsend



2022 Awards



\$1,522,850

Region-Wide TLC Funding

\$457,150

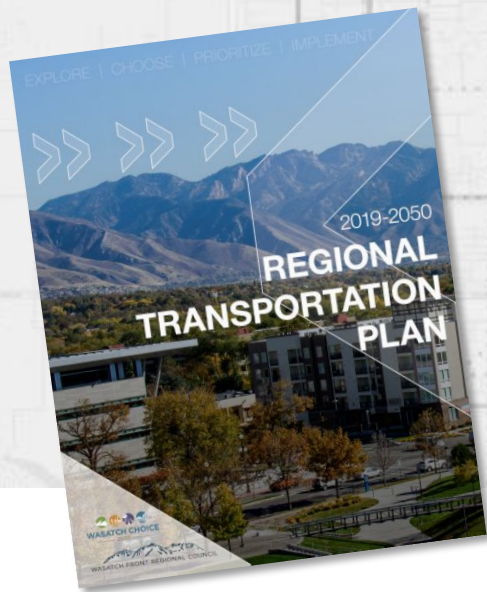
Local Match

\$1,980,000

Total

-
- 16 awards in 19 communities
 - 8 Salt Lake Urbanized Area
 - 7 Ogden-Layton Urbanized Area
 - 1 Tooele County
 - 1 multi-jurisdictional





Wasatch Choice 2023-2050 Update

WFRC Council // March 24, 2022