

# Mission Statement

---

The Wasatch Front Regional Council builds regional consensus and enhances quality of life by developing and implementing visions and plans for a well-functioning multi-modal transportation system, livable communities, a strong economy, and a healthy environment.



# Activities and Accomplishments Report

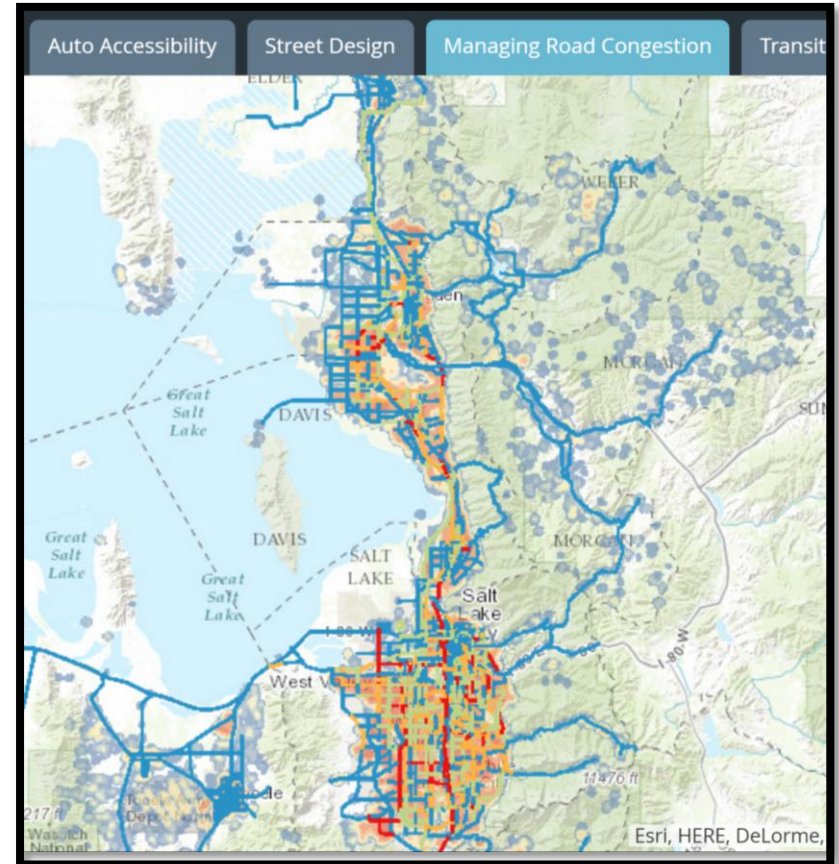
Fiscal Year 2016



*Image courtesy of Mateo Utah via Flickr.*



# Goal #1- Begin development of the 2019-2050 RTP, Utah's Unified Transportation Plan, and updated Wasatch Choice land use and development vision.



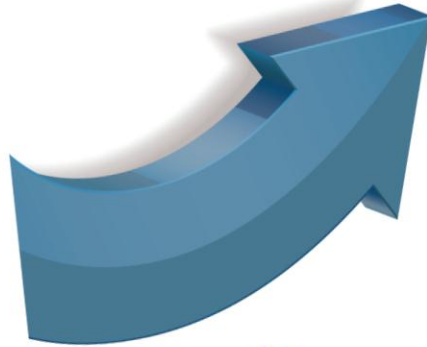


# WASATCH CHOICE

2050

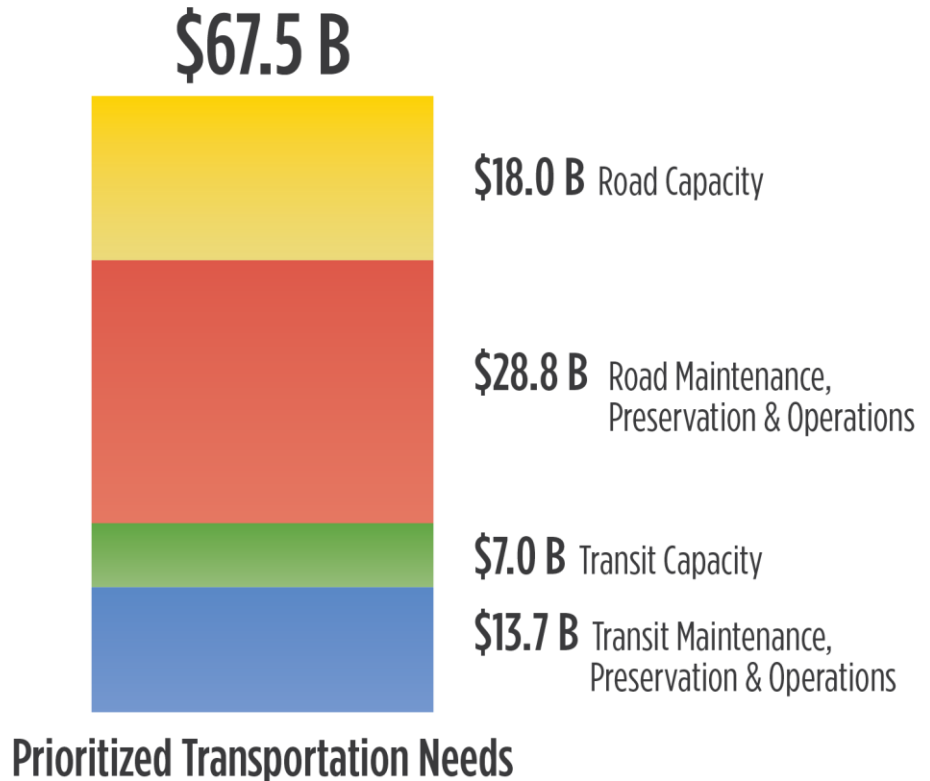
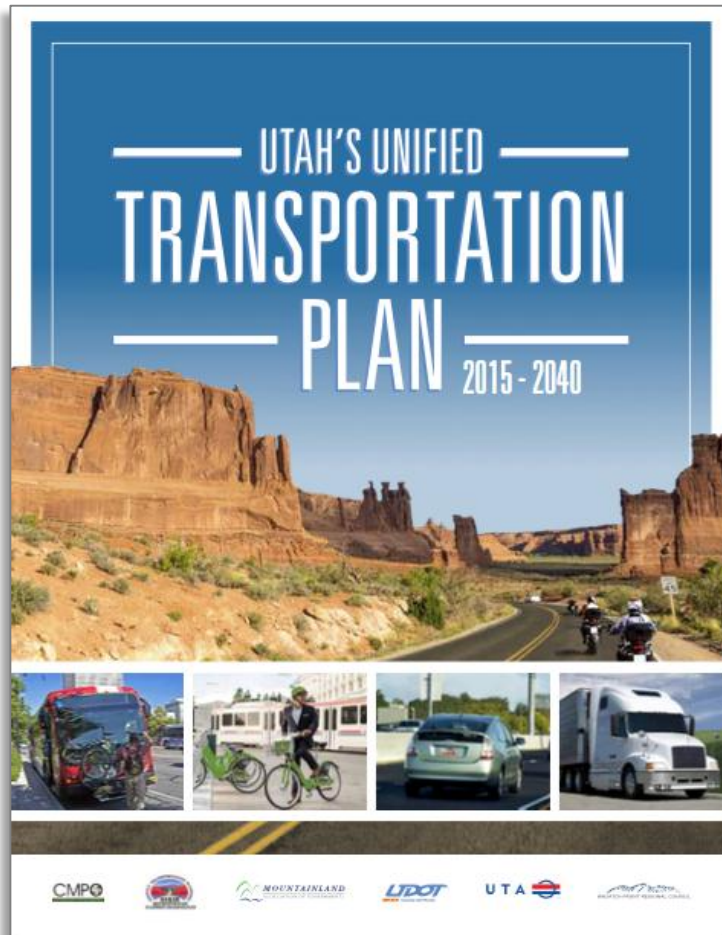
## CONSORTIUM AND ACTIVE TRANSPORTATION & HEALTH SUMMIT

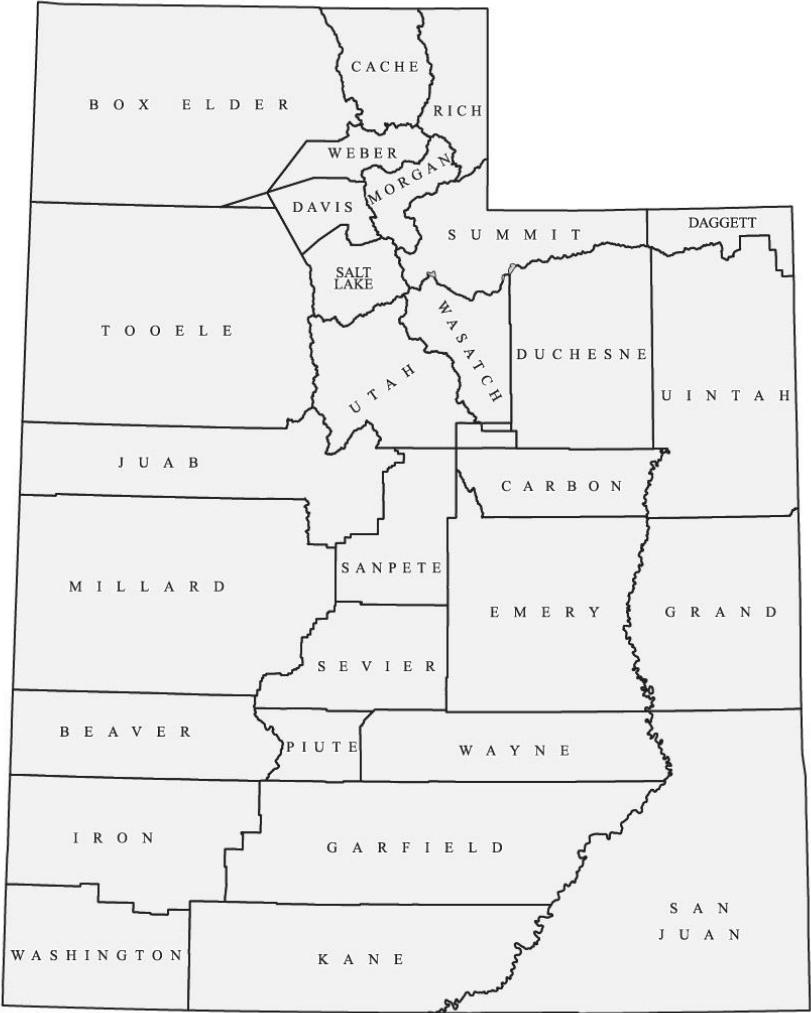
June 29, 2016 • Little America Hotel • Salt Lake City

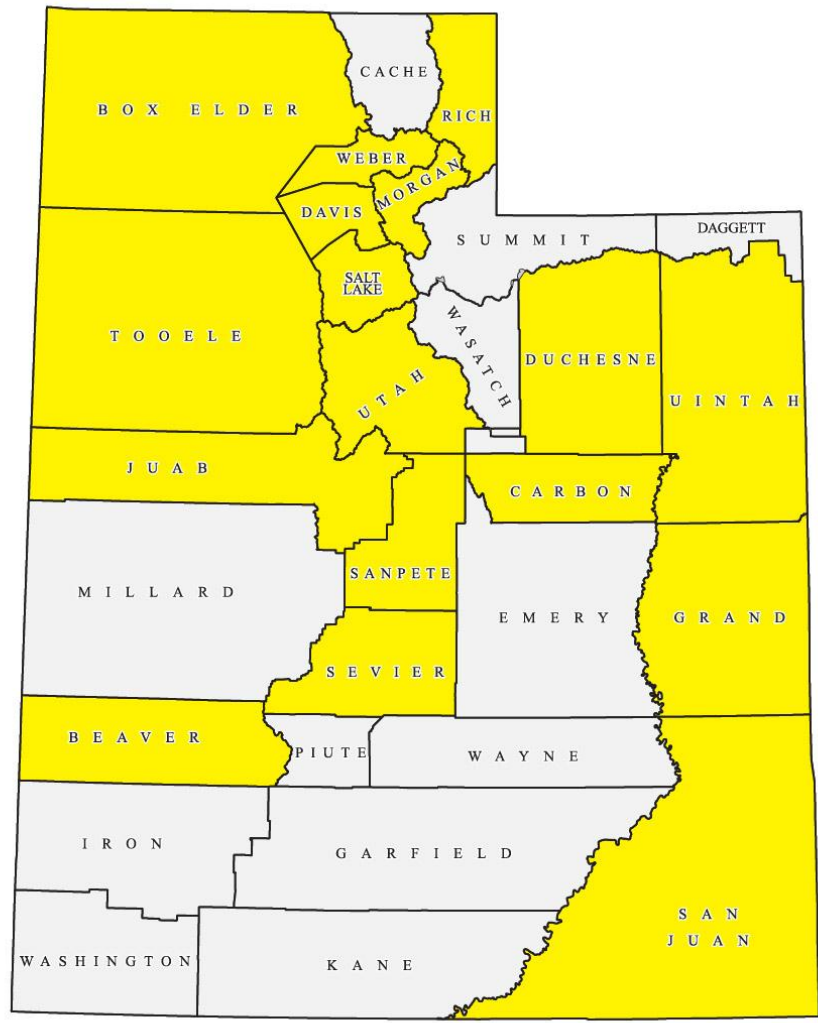


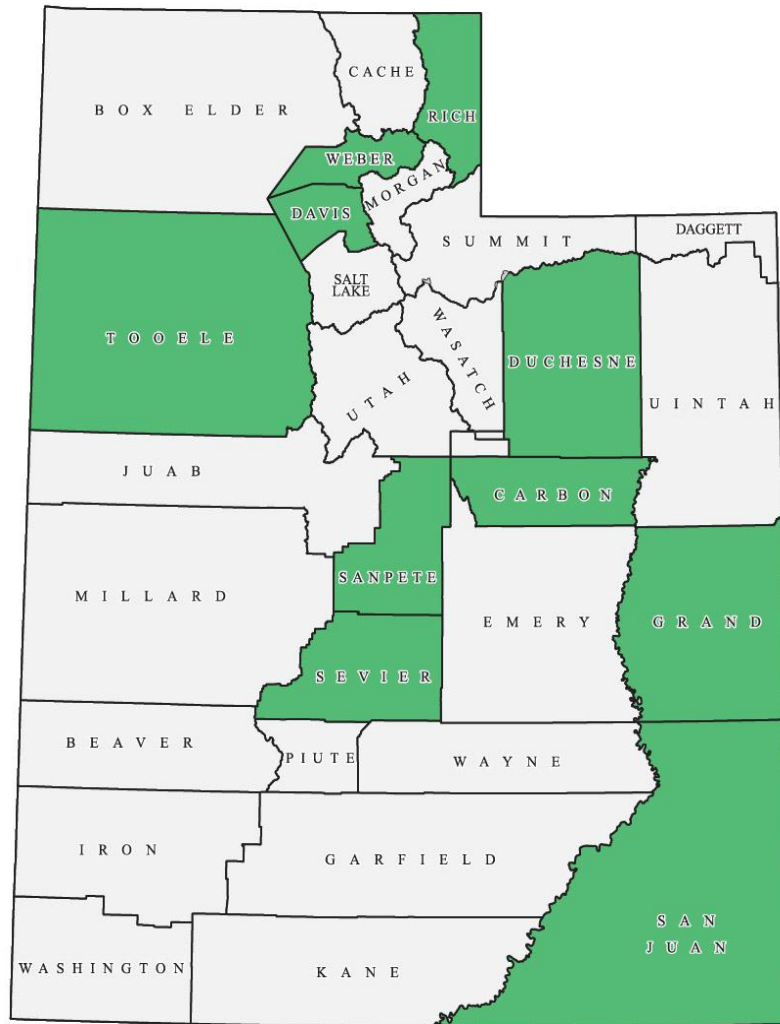


# Goal #2- Support efforts to fund the needs identified in the 2015-2040 Utah's Unified Transportation Plan.









# Goal #3- Further develop, integrate and promote WFRC programs that benefit local communities.

---



Transportation  
Improvement Program



WASATCH FRONT ECONOMIC DEVELOPMENT DISTRICT

## Community Development Block Grant



Homeownership Assistance



Community Development



Public Services



TRANSPORTATION  
AND  
LAND USE CONNECTION

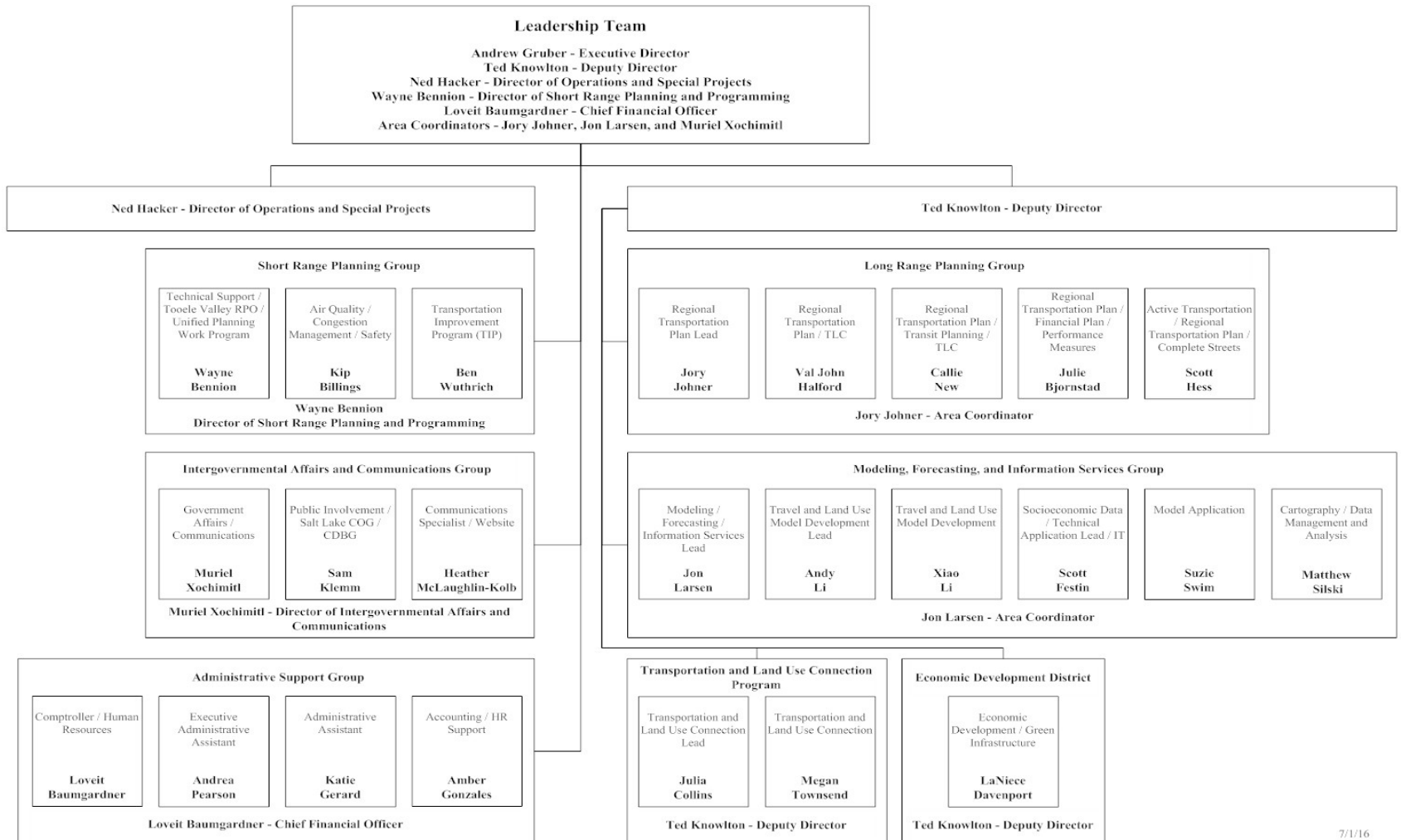


WASATCH FRONT REGIONAL COUNCIL



# Goal #4- Strive for organizational excellence including maximizing employee job satisfaction and performance.

## WFRC FUNCTIONAL ORGANIZATION CHART



# Wasatch Front Regional Council FY17 Goals

---

**Goal #1-** Collaboratively develop long- and short-range plans and programs, and assist local communities to implement those plans.

**Goal #2-** Integrate the consideration of transportation, land use, and economic development through a performance-based approach.

**Goal #3-** Support transportation policy-making.

**Goal #4-** Strive for organizational excellence.

# WFRC Funding Programs

---

Surface Transportation Program



Congestion Mitigation/Air Quality



Transportation Alternatives Program



Transportation & Land Use Connection



Wasatch Front Economic Development District



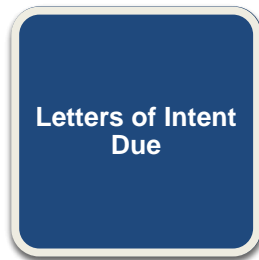
Community Development Block Grant



# WFRC Funding Program Deadlines

---

**We're Here**



**August  
2016**

**September  
2016**

**October  
2016**

**January  
2017**

**Spring  
2017**



# 2015-2040 RTP

## Amendment #2

August 25, 2016

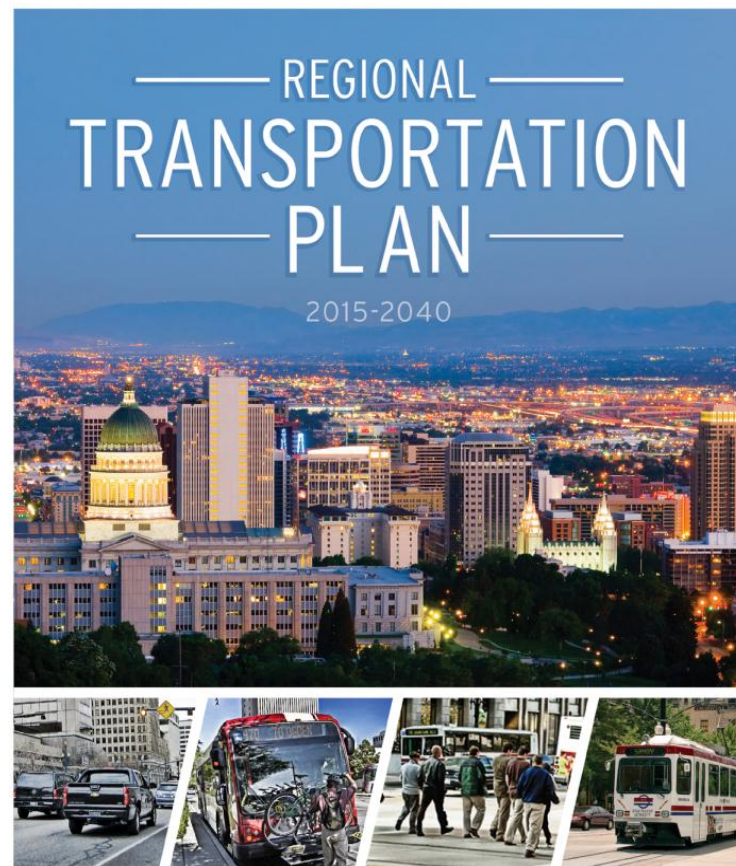




# RTP And Amendment Process Overview

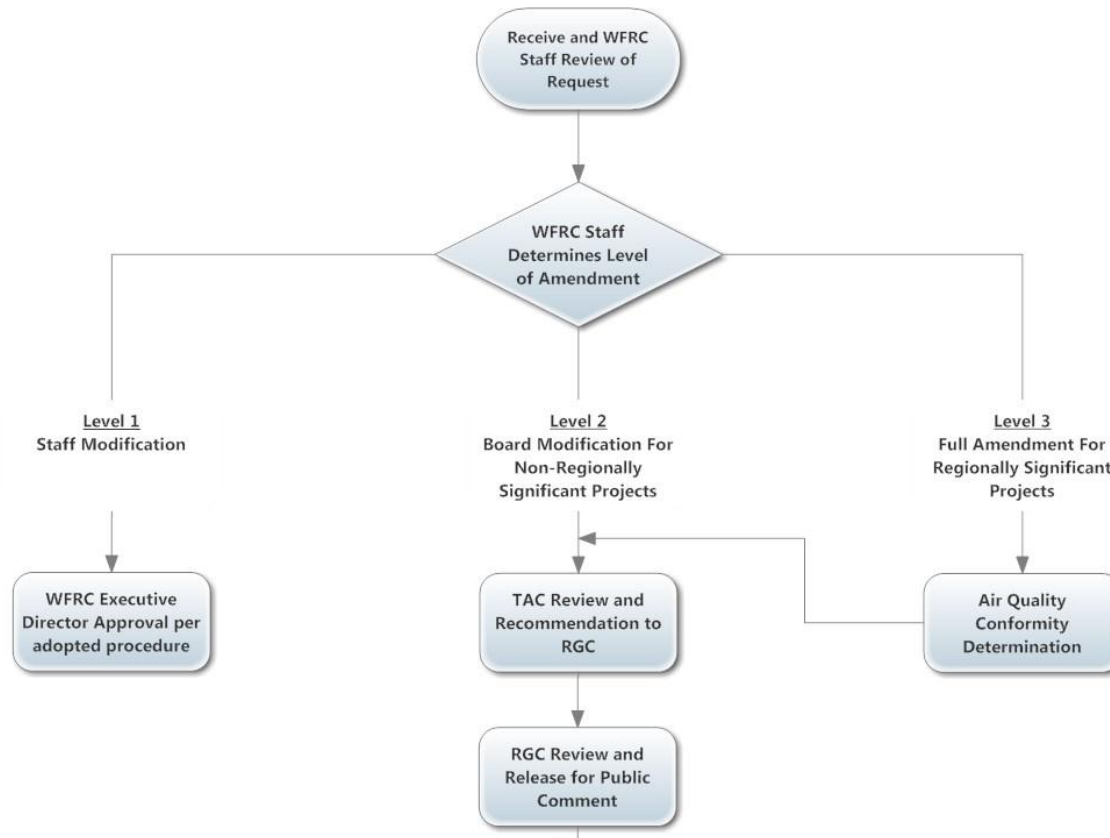
---

- RTP is updated every four years
  - Recently adopted May 2015
- Periodic adjustments are needed between adoption cycles
- WFRC's RTP amendment process
  - Financial constraints
  - Public review and input
  - Modeling and Air quality conformity
- Proposed requests reviewed annually beginning in March



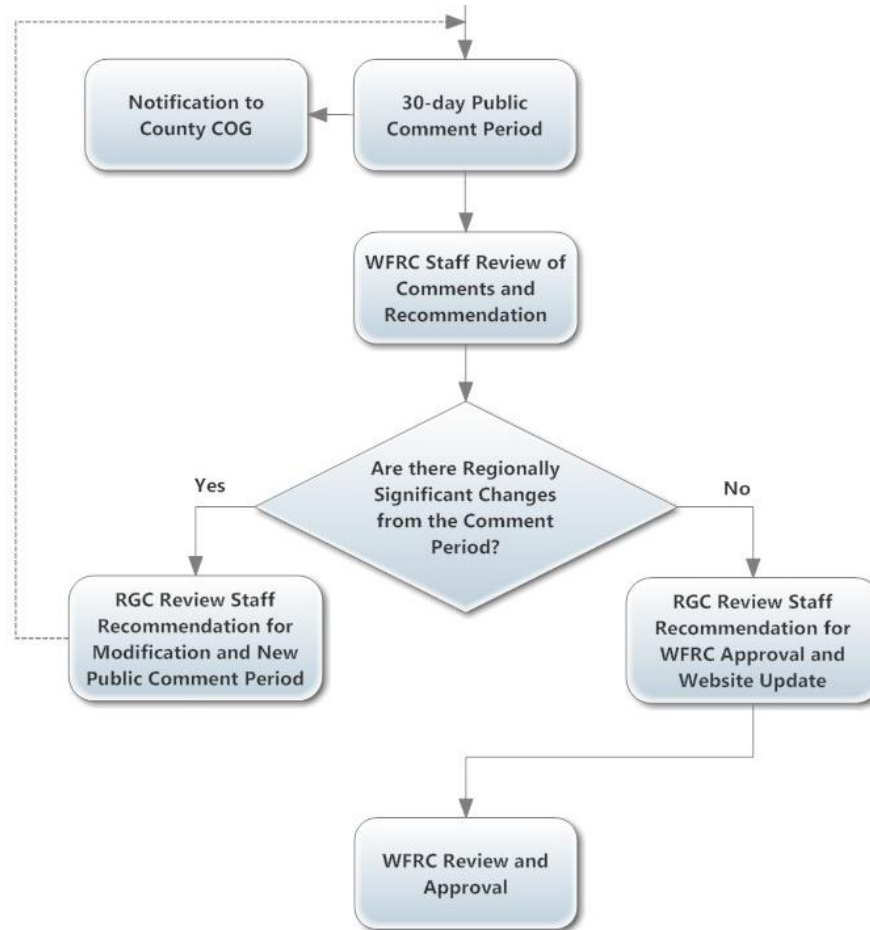
# RTP And Amendment Process Overview

## REGIONAL TRANSPORTATION PLAN AMENDMENT PROCESS



# RTP And Amendment Process Overview

---



- 1. 9000 South – I-15 to 700 East**  
Utah Department of Transportation
- 2. Redwood Road – 9000 South to Bangerter Hwy**  
Utah Department of Transportation
- 3. Valley Drive – From 20<sup>th</sup> Street to SR-39**  
Ogden City
- 4. 2<sup>nd</sup> Street – From Washington Blvd to Monroe**  
Ogden City
- 5. 17<sup>th</sup> Street – From Wall Avenue to Washington**  
Ogden City
- 6. 26<sup>th</sup> Street – From Wall Avenue to Washington**  
Ogden City
- 7. 2600 North – From Washington to Fruitland Dr.**  
North Ogden City
- 8. Wall Avenue Extension – North to Larsen Lane**  
Harrisville City
- 9. 14000 South – From 2700 West to 3600 West**  
Bluffdale City

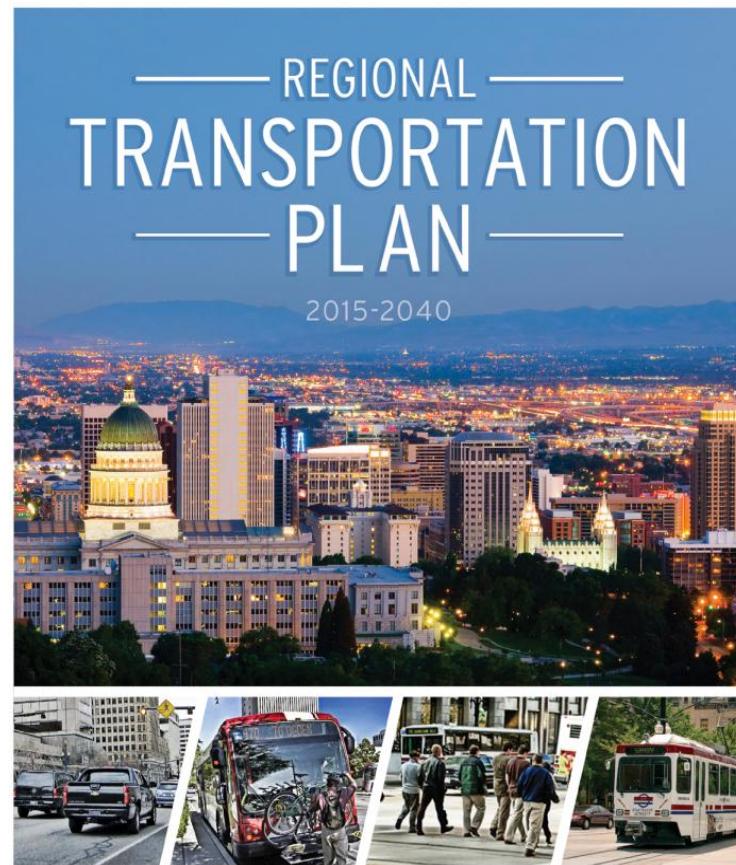




# RTP Amendment #2 Public Comments

---

- Meets Air Quality Conformity and Financial Constrains
- Comment Period
  - May 23 to June 24, 2016
  - 39 Comments on the Redwood Road project
- Recommendation for approval from the Wasatch Front Regional Council (WFRC)





# 2015-2040 RTP

## Amendment #2

August 25, 2016



# Plan Development

Wasatch Choice 2050 Vision and  
Regional Transportation Plan

———— August 25, 2016 ————



WASATCH FRONT REGIONAL COUNCIL

# The Wasatch Choice 2050 Vision and RTP

---



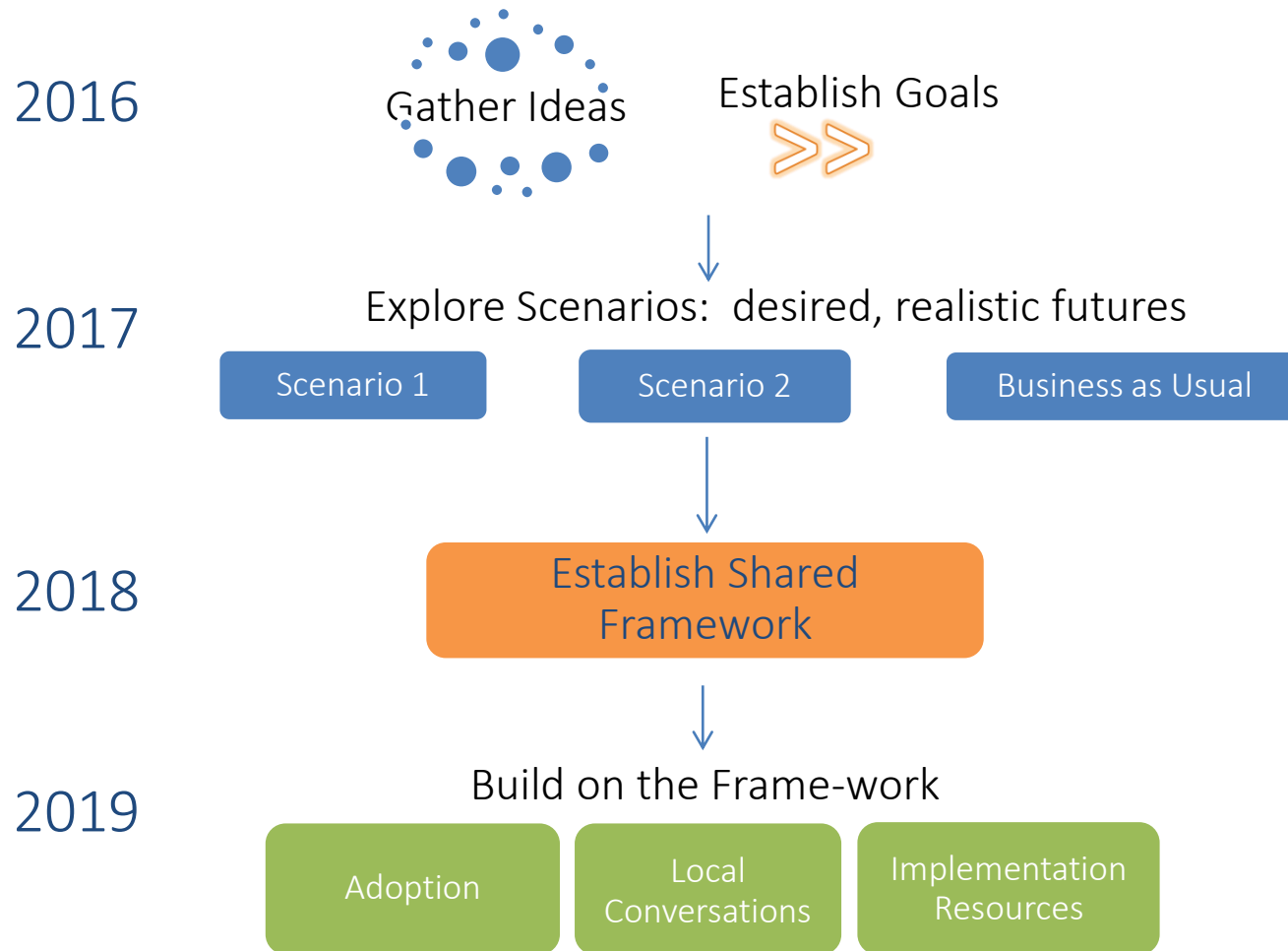
## **WASATCH CHOICE**

— 2050 —



# Wasatch Choice 2050 Process

---



# Today's Update

---

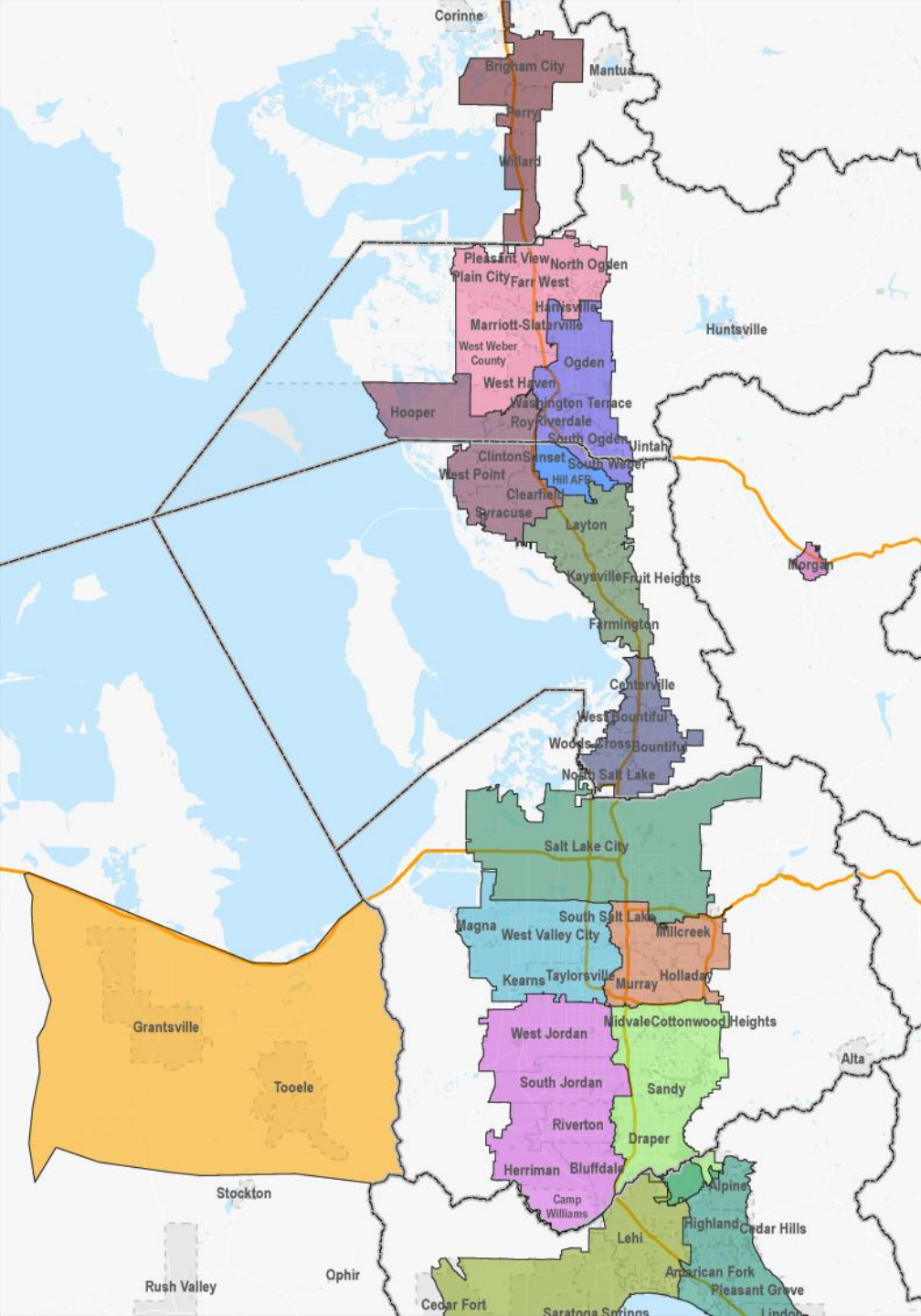
- What we heard at the Small Area Meetings
- How are we developing scenarios
- Where do we go from here





—— Small Area Meeting Feedback ——

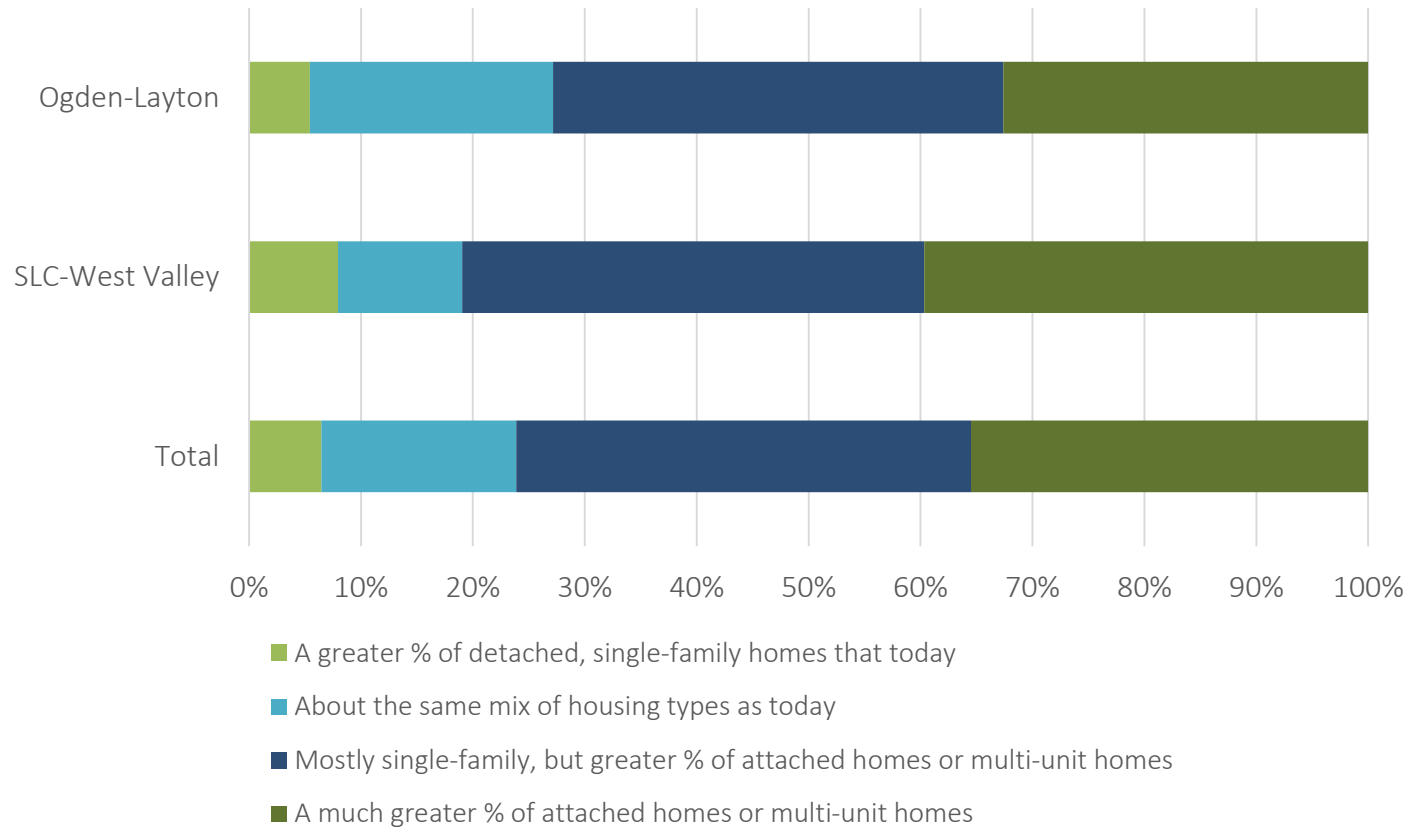




# Small Area Meetings

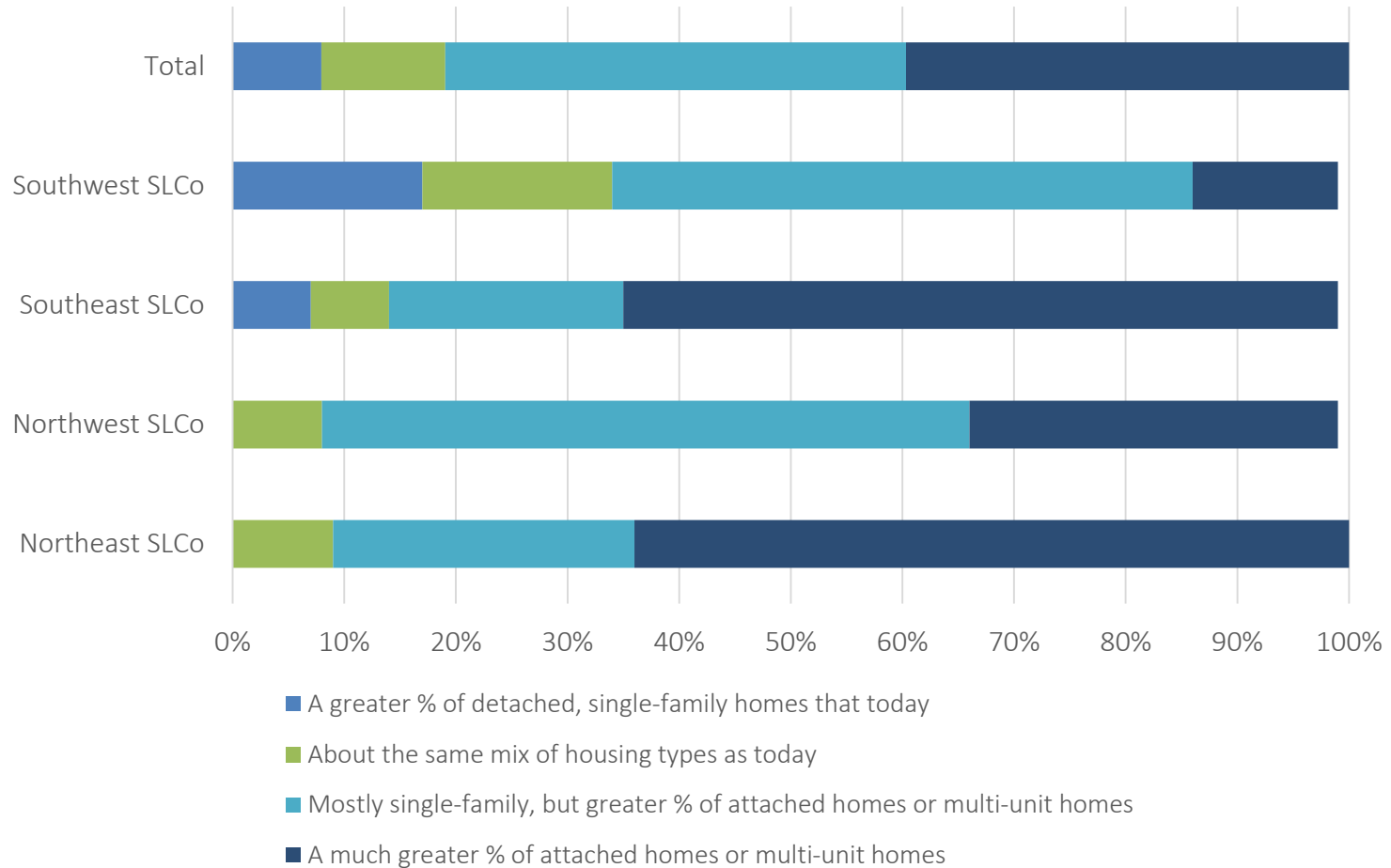
# Small Area Meeting Polling:

“With regard to the mix of available housing, this area should offer?”



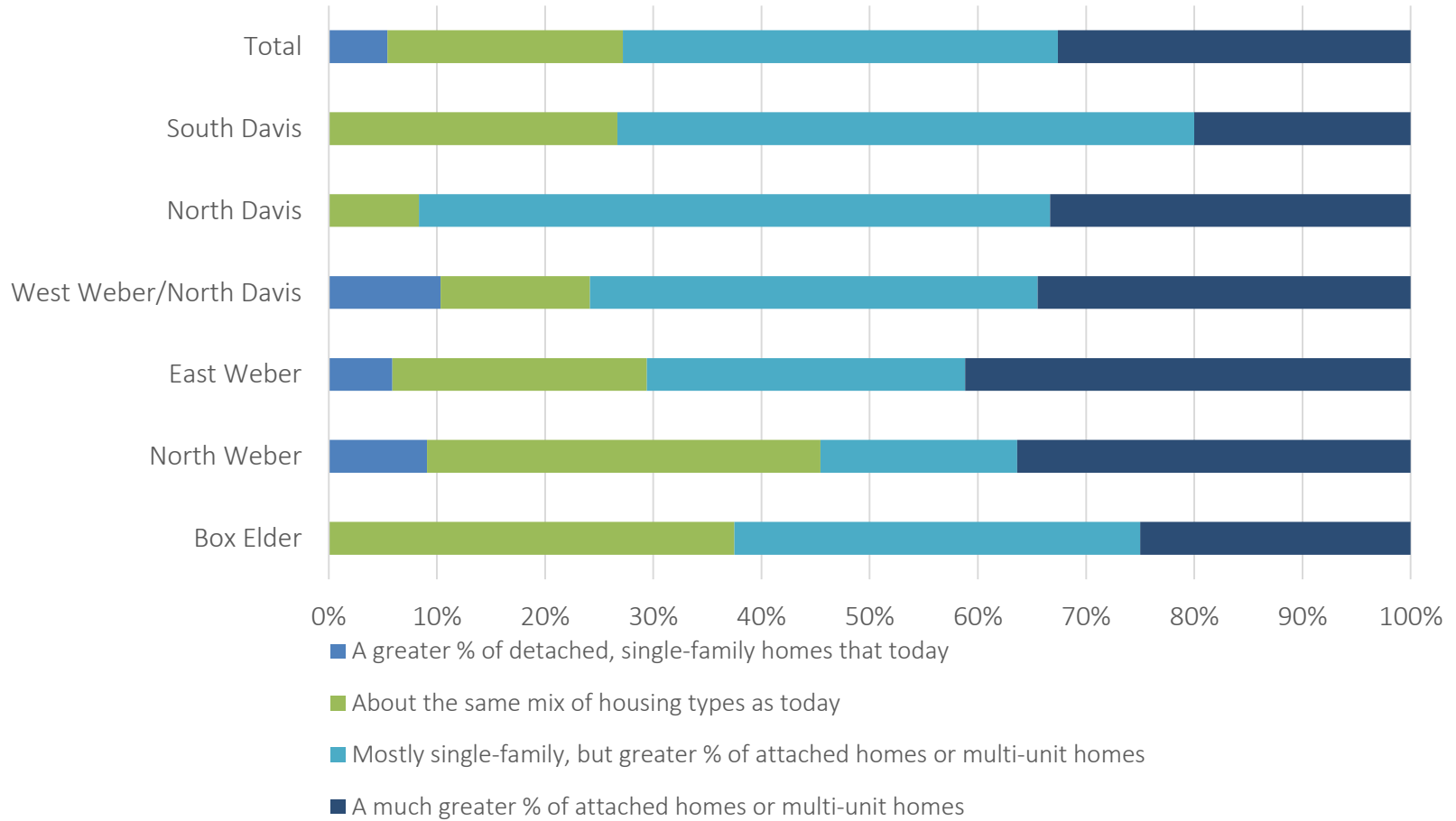
# Small Area Meeting Polling:

“With regard to the mix of available housing, this area should offer?”



# Small Area Meeting Polling:

“With regard to the mix of available housing, this area should offer?”



# Small Area Meeting Mapping

---



---

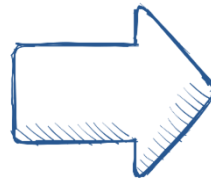
# Scenario Development

---



# Scenario Development

---





# Scenario Themes

---



- General Plans
- 2015-2040 RTP
- Extrapolated Trends



- Dominant centers
- Capital-intensive transit projects
- Local roadway investments
- Connectivity



- Dispersed centers
- Service-intensive transit projects
- Regional roadway investments
- Connectivity

---

## Next Steps

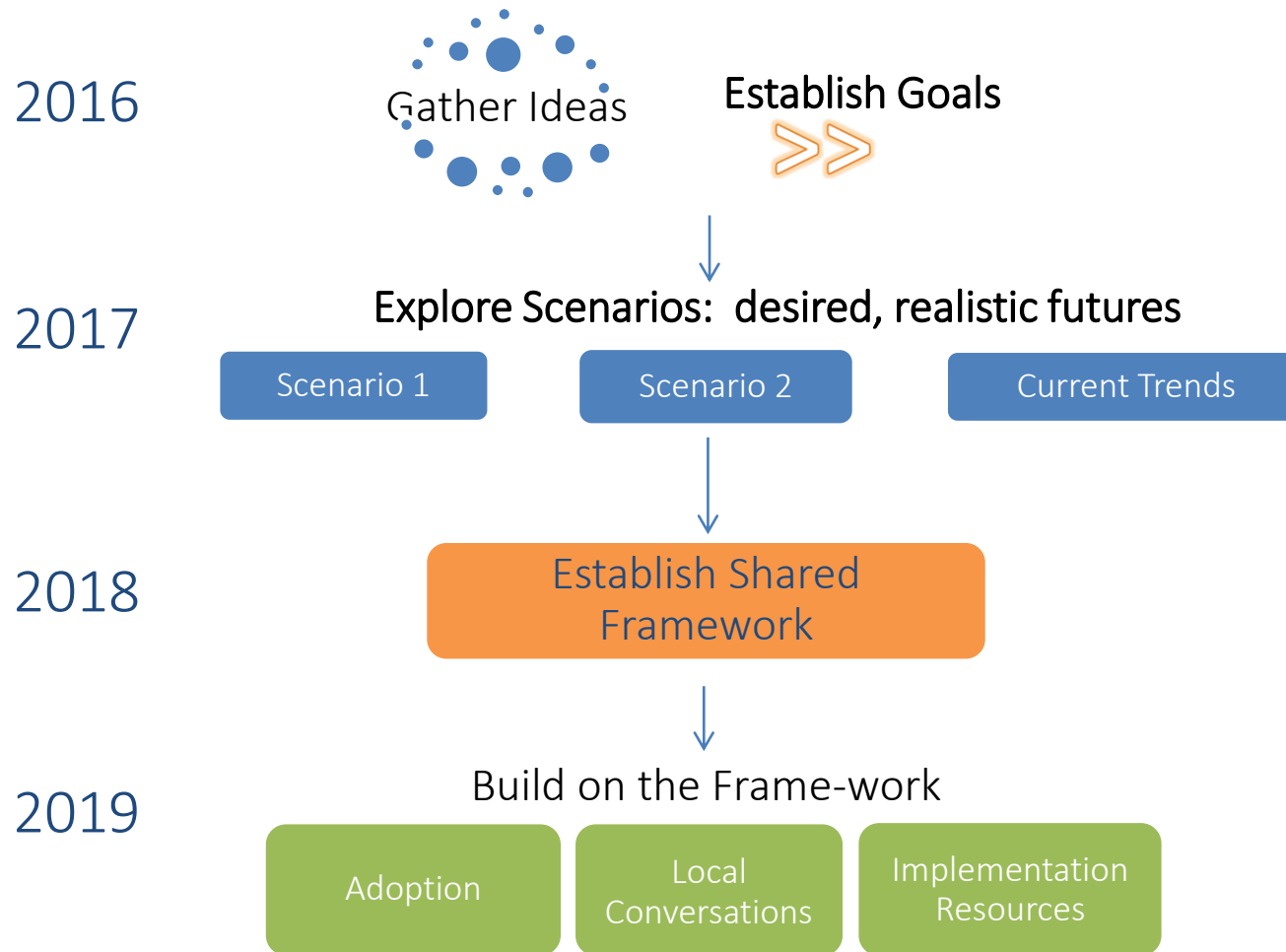
---



WASATCH FRONT REGIONAL COUNCIL

# Next Steps

---



# Plan Development

Wasatch Choice 2050 Vision and  
Regional Transportation Plan

———— August 25, 2016 ————



WASATCH FRONT REGIONAL COUNCIL



## MISSION

*The Wasatch Front Regional Council enhances quality of life by developing and implementing visions and plans for a well-functioning multi-modal transportation system, livable communities, a strong economy, and a healthy environment.*

# 3 Key Strategies to Integrate Economic Development with Transportation and Land Use

1. Coordinate Transportation Investments with Economic Clusters
2. Coordinate Transportation Investments to Improve Access to Opportunity
3. Ensure Fiscal Sustainability through Efficient Growth and Infrastructure Investments



# 1. Coordinate Transportation Investments with **Economic Cluster** Needs

*Clustering is when firms of the same industry gather together*

Utah's Six Targeted Economic Clusters:

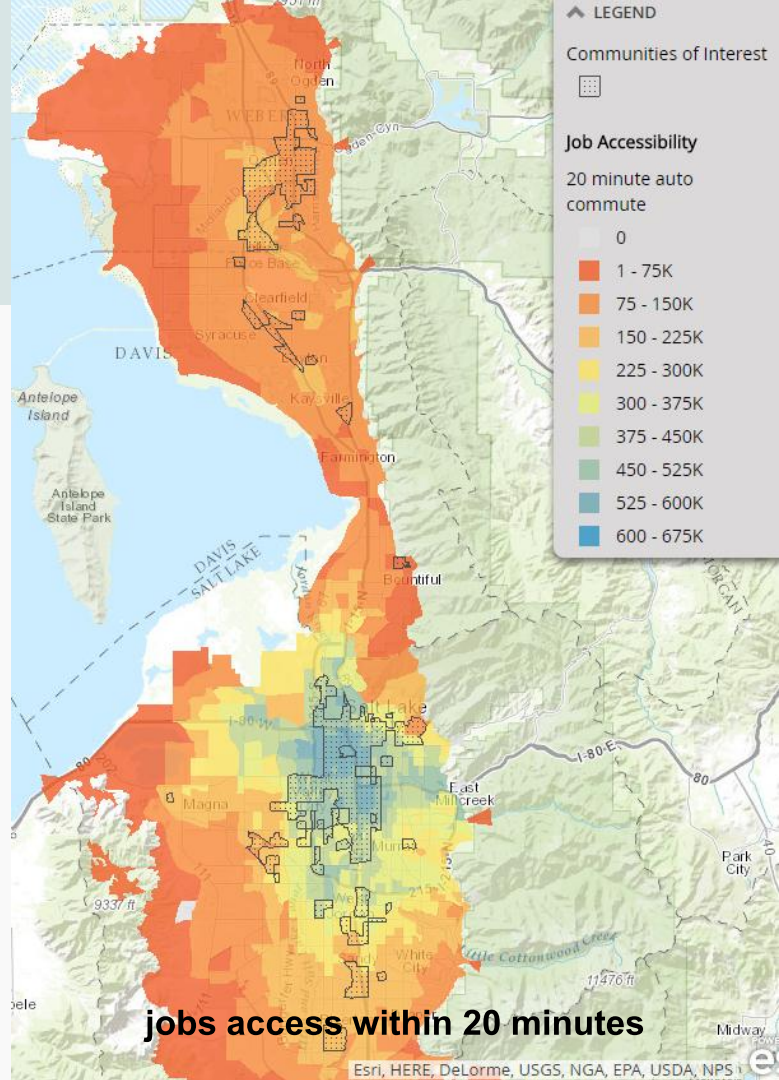
- Aerospace and Defense
- Natural Resources and Energy
- Financial Services
- IT and Software 
- Life Sciences
- Outdoor Recreation





## 2. Coordinate Transportation Investments to Improve **Access to Opportunity**

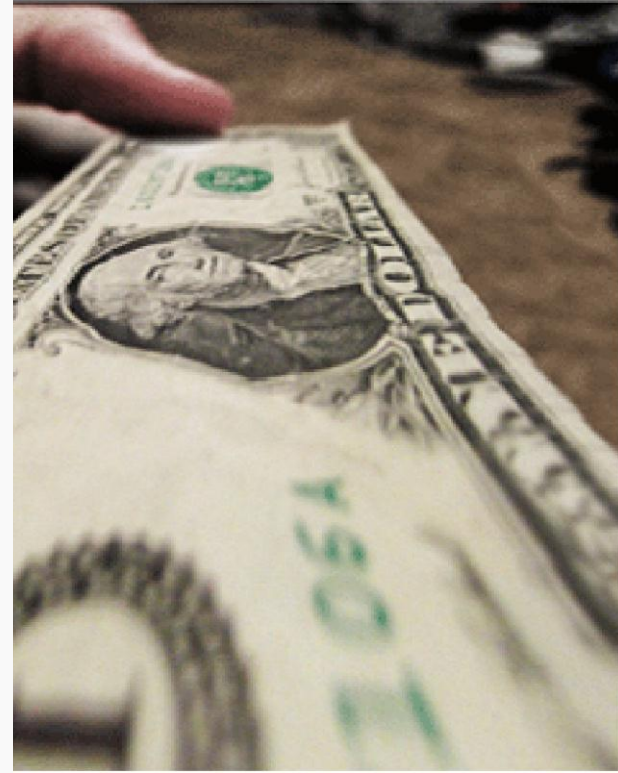
Access to opportunity is a persons ability to reach jobs, shopping, training, recreation, and other services in a reasonable amount of time.





### 3. Ensure Fiscal Sustainability through **Efficient Growth and Infrastructure Investments**

When we grow efficiently we utilize existing infrastructure and resources. We grow in already-developed areas or near transportation infrastructure.



---

# Thank you

LANIECE DAVENPORT  
[LDAVENPORT@WFRC.ORG](mailto:LDAVENPORT@WFRC.ORG)  
801-363-4250 X1136  
[WWW.WFRC.ORG](http://WWW.WFRC.ORG)

---

# 2017-2022 TIP Board Modification

Regional Council  
August 25, 2016

Ben Wuthrich  
Wasatch Front Regional Council



WASATCH FRONT REGIONAL COUNCIL

## 2016-2021 Transportation Improvement Program (TIP) (Amendment Nine)

### Board Modification

#### Change in Project Scope

##### Ogden/ Layton Urban Area

County	Sponsor	Facility	PIN	Project Location	Concept/ Type of Improvement	Funding Source	Project Estimated Cost	Currently Funded Amount	Action	Funding Amount	Year
Davis	Woods Cross	1500 South	14042	1500 South Phase 3; 1350 West to 1100 West	Reconstruction with minor widening including; improvements to Drainage, Curb, Gutter and Sidewalk	STP_URB_SL Surface Transportation Program - Urban Area Ogden\ Layton (WFRC)	\$3,003,400	\$2,753,641	<i>Extend Project Scope</i>	<b>Same</b>	2017

This project will widen 1500 South between 1100 W. and 1350 W., add shoulders, and reconstruct the existing asphalt street section. This project includes safety improvements by improving access conditions, center turn-lanes at major intersections for improved mobility, and improving ped/bike safety at railroad crossings. This Board Modification will extend project limits to facilitate the street transitions and drainage. It will also connect sidewalk to the subdivision on the north for pedestrian access, as well as include the railroad crossing in the project limits. No additional funding is being requested for the scope change.

#### New Project

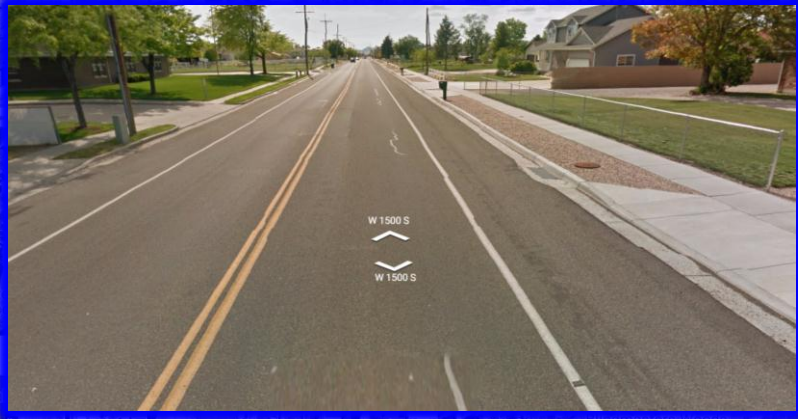
##### Salt Lake/ West Valley Urban Area

County	Sponsor	Facility	PIN	Project Location	Concept/ Type of Improvement	Funding Source	Project Estimated Cost	Currently Funded Amount	Action	Funding Amount	Year
Salt Lake	UDOT	5300 South	14962	5300 South and Commerce Drive Intersection	Signal Upgrade and Intersection Improvements	HSIP (Highway Safety Improvement Program)	\$600,000	\$0	<i>New Funding</i>	<b>\$600,000</b>	2016

To reduce weaving and congestion, this project proposes to take advantage of existing roadway width to provide an additional westbound through lane that feeds the left turn lane to the southbound I-15 on-ramp. The engineering estimate is \$600K. These funds are available in the Highway Safety Improvement Program (HSIP).



1500 South; 1350 West to 1100 West  
Reconstruct with Minor Widening



Project Scope Change	Estimate Cost	\$ 3,003,400
	Programmed Amount	\$ 2,753,641
	Year	16 - '18



# Salt Lake County – 5300 South & Commerce Drive

Signal Upgrade and Intersection Improvements

New Funding  
\$600,000

---

Total Project Cost  
Estimate  
\$600,000

Project will provide an additional westbound through lane that feeds the left turn lane to SB I-15 ramps

**2016-2021 Transportation Improvement Program (TIP) (Amendment Nine)**

**Board Modification**

**New Projects (FY 2017 Recreational Trails Program)**

The federal Recreational Trails Program (RTP) was authorized by Congress as part of the Intermodal Surface Transportation Efficiency Act of 1991. This program has been continued through the current FAST Act Transportation authorization. • These projects are selected and administered through the Utah State Parks and Recreation Division. • Funds may be used to provide and maintain trails for motorized and nonmotorized recreational uses, including trailside and trailhead facilities, and also provisions to facilitate access for people with disabilities. • For the 2017 Program, Utah has 40 Projects totaling \$1,490,393 in Federal Aid Funds (8 projects totaling \$202,766 in the WFRCA Area.)

**WFRCA Area**

Sponsor	Project Location	Concept/ Type of Improvement	Funding Amount	Total Project Value
Non-Motorized				
Salt Lake County Parks & Recreation	Jordan River Equestrian Trail	Jordan River Equestrian Trail - Jordan Narrows Trailhead to the Utah County Line (\$47,000 RTP requested, non-motorized): The purpose of this project is to properly locate a five foot wide, wood chipped equestrian trail from Jordan Narrows Trailhead to the Utah/Salt Lake County Line.	\$30,000	\$94,755
Salt Lake County Parks & Recreation	Utah & Salt Lake Canal Trail - 5784 West to 6608 West	Utah & Salt Lake Canal Trail - 5784 West to 6608 West (\$100,000 RTP requested, non-motorized): Consists of developing a 10-foot wide asphalt paved pedestrian/bicycle path along and within the Utah and Salt Lake Canal right-of-way.	\$50,000	\$525,748

**2016-2021 Transportation Improvement Program (TIP) (Amendment Nine)**

**Board Modification**

**New Projects (FY 2017 Recreational Trails Program) - Continued**

**WFRCA Area**

Sponsor	Project Location	Concept/ Type of Improvement	Funding Amount	Total Project Value
Motorized				
Utah Division of Parks & Recreation	Throughout the State of Utah	Snowmobile Trail Grooming and Maintenance (\$165,000 RTP requested, motorized): To provide maintenance on the 18 snow grooming complexes, trailheads and trail signing, replacement or repair of trail blazes, markers and cairns, the clearing of obstructions, throughout the State of Utah. Repairs, maintenance, and replacement of snow grooming equipment.	\$31,383	\$64,083
Utah Division of Parks & Recreation	Throughout the State of Utah	Snowcat Purchase (\$87,500 RTP requested, motorized): To provide grooming and maintenance on the 18 snow grooming complexes through out the state of Utah. Repairs, maintenance, and replacement of snow grooming equipment.	\$15,000	\$58,252
Statewide	Throughout the State of Utah	OHV Program Info Brochures; This project covers the costs of developing and printing updated off-highway vehicle (OHV) brochure.	\$31,383	\$64,083
UWCNF	Uinta-Wasatch-Cache National Forests	UWCNF-Maintenance of OHV/ Single-Track Routes (\$76,000 RTP requested, motorized): This application is for the entire Uinta-Wasatch-Cache National Forest. It is for the general maintenance of priority motorized trails across the forest including OHV and single-track routes.	\$15,000	\$58,252
Utah Division of Parks & Recreation	Throughout the State of Utah	Utah Trail Host / OHV Volunteer Specialist (\$30,000 RTP requested, motorized): The Utah Division of Parks and Recreation is seeking grant funds to provide additional support of a volunteer coordinator, or "Trail Host Coordinator" to work with agencies, local governments, counties and groups to increase the amount of Trail Host sponsored projects, monitoring efforts and education/outreach opportunities that occur on public lands statewide.	\$15,000	\$58,252



# Recreational Trails Program



PARKS

ACTIVITIES

RESOURCES

SEARCH



le Trails      Recreational Trails Prog







# **Transportation Improvement Program is . . .**

- **Six Year Program of Highway & Transit**
  - **Four Years Funded - Two Years Concept**
- **In the Urban Areas**
  - **Salt Lake/ West Valley - Ogden/ Layton**
- **Funded by**
  - **Federal, State, & Local Programs**
- **For All Cities, Counties, UDOT & UTA**



# **Transportation Improvement Program will . . .**

- **Implement the Long Range Plans**
  - **Highway/ Transit Projects for the Region**
- **Help Meet the Short Range Needs**
  - **Of the Wasatch Front Area**
- **Provide for the Maintenance**
  - **Of the Existing Transportation System**



# **Transportation Improvement Program Contains .....**

- **Lists of Projects**
- **Including;**
  - **New Construction**
  - **Rehab & Maintenance**
  - **Safety/ ITS**
  - **Transit, O & M**
  - **Pedestrian & Bike**



## **Projects in the TIP:**

- **Represent \$ Millions**
- **Thousands of Jobs**
- **Economic Growth & Development**
- **Mobility/ Access**
- **Preservation of Life**
- **And Promote the Quality of Life**



# **Federal Law**

## **Requires:**

- **Financially Constrained**
- **Conform To Air Quality**
- **Reviewed By the Public**
- **Approved by Regional Council**

# • 2016 •

## January

S	M	T	W	T	F	S
					1	2
3	4	5	6	7	8	9
10	11	12	13	14	15	16
17	18	19	20	21	22	23
<del>24</del> <sub>31</sub>	25	26	27	28	29	30

## February

S	M	T	W	T	F	S
	1	2	3	4	5	6
7	8	9	10	11	12	13
14	15	16	17	18	19	20
21	22	23	24	25	26	27
28	29					

## March

S	M	T	W	T	F	S
		1	2	3	4	5
6	7	8	9	10	11	12
13	14	15	16	17	18	19
20	21	22	23	24	25	26
27	28	29	30	31		

## April

S	M	T	W	T	F	S
					1	2
3	4	5	6	7	8	9
10	11	12	13	14	15	16
17	18	19	20	21	22	23
24	25	26	27	28	29	30

## May

S	M	T	W	T	F	S
1	2	3	4	5	6	7
8	9	10	11	12	13	14
15	16	17	18	19	20	21
22	23	24	25	26	27	28
29	30	31				

## June

S	M	T	W	T	F	S
			1	2	3	4
5	6	7	8	9	10	11
12	13	14	15	16	17	18
19	20	21	22	23	24	25
26	27	28	29	30		

## July

S	M	T	W	T	F	S
					1	2
3	4	5	6	7	8	9
10	11	12	13	14	15	16
17	18	19	20	21	22	23
<del>24</del> <sub>31</sub>	25	26	27	28	29	30

## August

S	M	T	W	T	F	S
	1	2	3	4	5	6
7	8	9	10	11	12	13
14	15	16	17	18	19	20
21	22	23	24	25	26	27
28	29	30	31			

## September

S	M	T	W	T	F	S
				1	2	3
4	5	6	7	8	9	10
11	12	13	14	15	16	17
18	19	20	21	22	23	24
25	26	27	28	29	30	

## October

S	M	T	W	T	F	S
						1
2	3	4	5	6	7	8
9	10	11	12	13	14	15
16	17	18	19	20	21	22
<del>23</del> <sub>30</sub>	<del>24</del> <sub>31</sub>	25	26	27	28	29

## November

S	M	T	W	T	F	S
		1	2	3	4	5
6	7	8	9	10	11	12
13	14	15	16	17	18	19
20	21	22	23	24	25	26
27	28	29	30			

## December

S	M	T	W	T	F	S	
					1	2	3
4	5	6	7	8	9	10	
11	12	13	14	15	16	17	
18	19	20	21	22	23	24	
25	26	27	28	29	30	31	



# TIP Public Comment Map

Leave your comments by following the instructions.

## Instructions

- To add a comment:**
1. Click the green *Add Comment* icon at the bottom of the screen.
  2. Click the icon that says "Add my Comment".
  3. Then, click anywhere on the map where you wish to comment.
  4. Fill out the requested information, then click the "X" in the top right corner of the comment box to save your comment.

\*You may leave more than one comment. Your name and email will not be visible to the public or shared.

- How to navigate:**
1. Use your mouse to click and drag the map to any location you desire.
  2. Use your mouse's scroll wheel or the '+' '-' icons on the left of the screen to zoom in and out.
  3. Click on any colored line to learn more about that project.

(2 of 8)

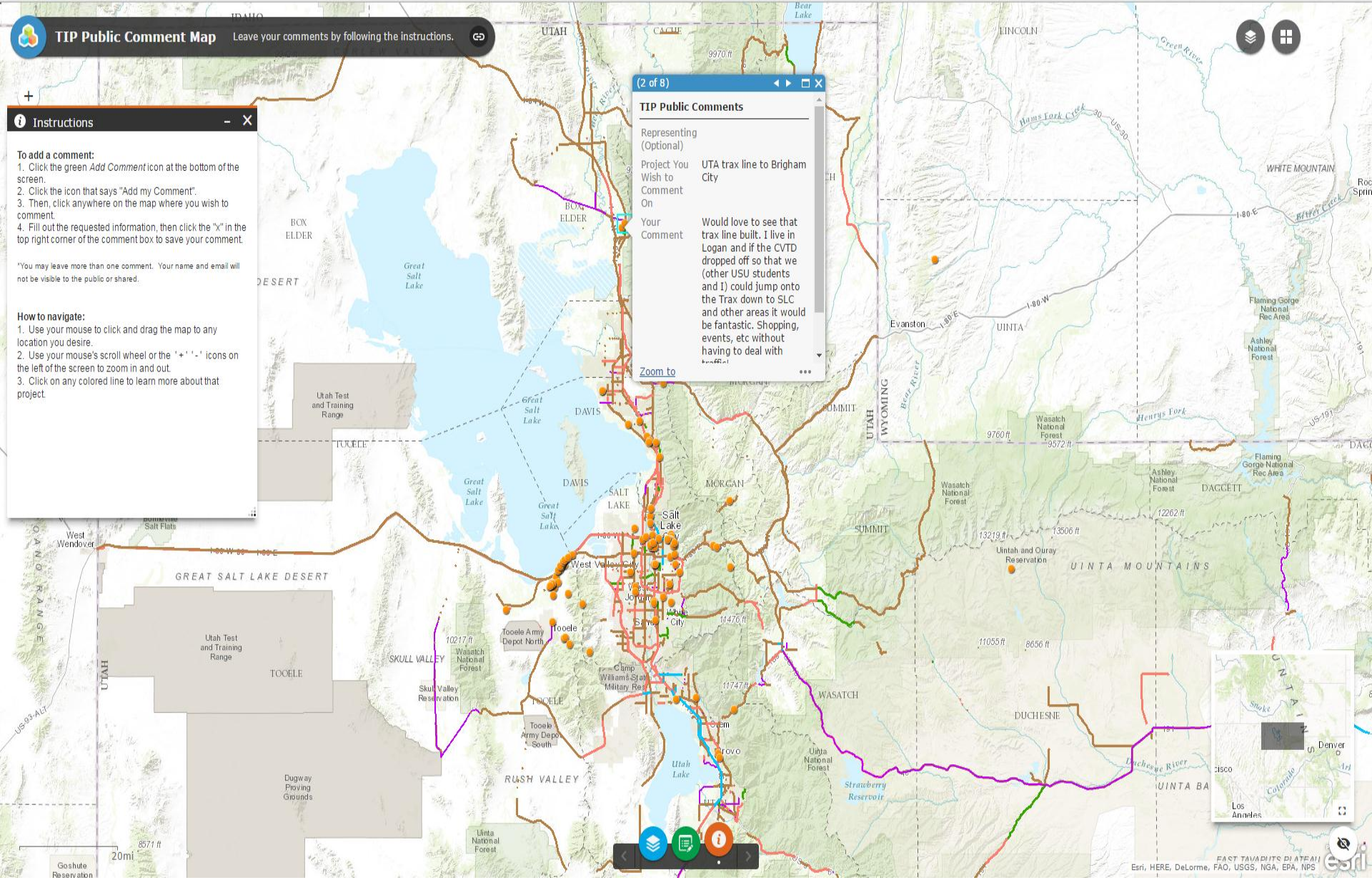
### TIP Public Comments

Representing (Optional)  
Project You Wish to Comment On  
Your Comment

Project You Wish to Comment On	UTA trax line to Brigham City
--------------------------------	-------------------------------

Would love to see that trax line built. I live in Logan and if the CVTD dropped off so that we (other USU students and I) could jump onto the Trax down to SLC and other areas it would be fantastic. Shopping, events, etc without having to deal with

Zoom to





# Process for New Projects & The Draft TIP

