

# ITEM 5 | Transportation & Land Use Connection 2025 Awards

---

ACTIVE TRANSPORTATION COMMITTEE, April 8, 2025



# **“TLC”**

**Planning technical assistance program linking:**

**LAND USE + TRANSPORTATION + ECONOMIC DEVELOPMENT**



- **Maximize the value of investment in public infrastructure.**
- **Enhance access to opportunities.**
- **Increase travel options to optimize mobility.**
- **Create communities with opportunities to live, work, and play.**



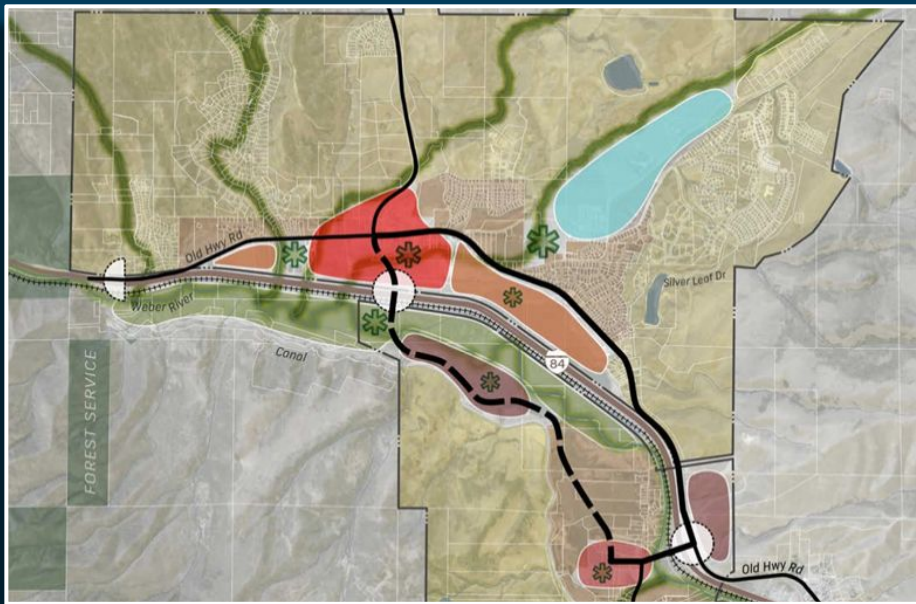
Governor's Office of  
**Planning and Budget**

# "TLC"



## TRANSPORTATION AND LAND USE CONNECTION

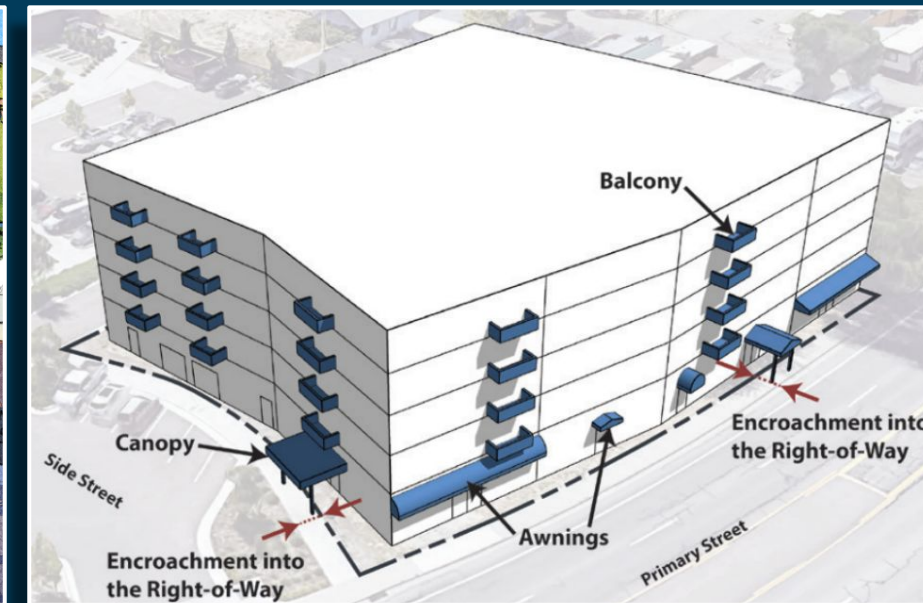
### Plans



### Design



### Ordinances



### Implementation Strategies





## INSTRUCTIONS

Use the filters below to filter the data seen in the map. To view a project area in the map, select that project from the list to the right.



### Select a Project Status

All Statuses



### Select a Project Type

All Types



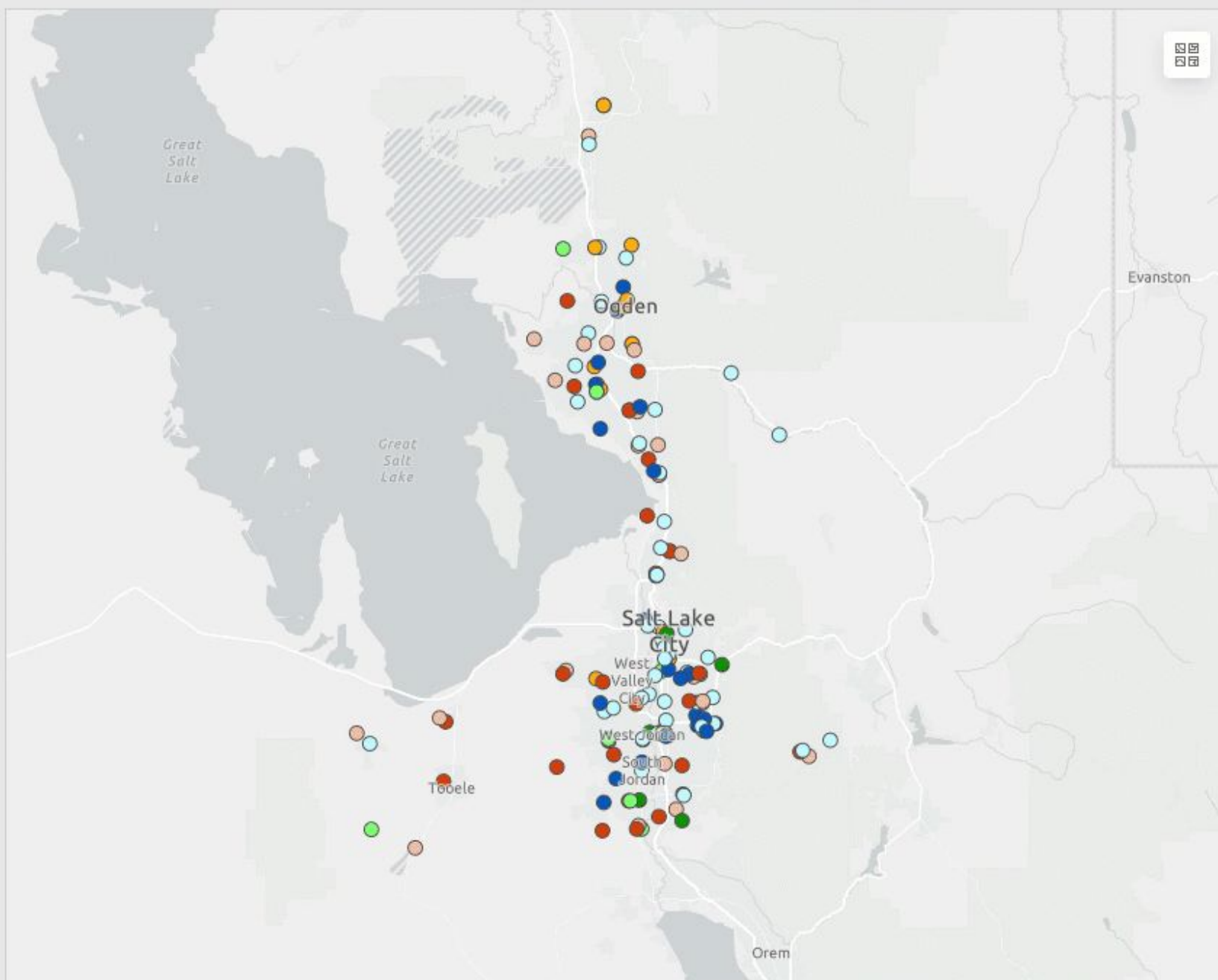
### Select a Year

All Years

## LEGEND

- Active Transportation Plan
- General Plan Update
- Ordinance
- Parks and Open Space Plan
- Station/Small Area Plan
- Study
- Transportation Master Plan
- Vision

Last Updated: March 2024



Utah Geospatial Resource Center, Esri, TomTom, Garmin, SafeGraph, FAO, METI/NASA, USGS, Bureau of Land Management, EPA, NPS... Powered by Esri

To view project information and area, select the coordinating project from the project list on the right-hand side.

Funded  
**16**

Under Contract  
**27**

Complete  
**110**

## All Projects

### SELECTION LIST

Select a project from this list to view the area on the map. To view another area, deselect your previous selection, and click on a new project.

Search...

- Alta  
Core Active Transportation Implementation Plan
- Bluffdale  
Bluffdale Active Transportation Plan
- Copperton  
Active Transportation Plan and Connectivity Ordinance
- Davis County  
Active Transportation Plan
- Draper  
River to Range Corridor - Draper City Connections
- Herriman  
Active Transportation Plan
- Hooper, Marriott-Slaterville, North Ogden, Plain City, Roy, Weber County, West Haven

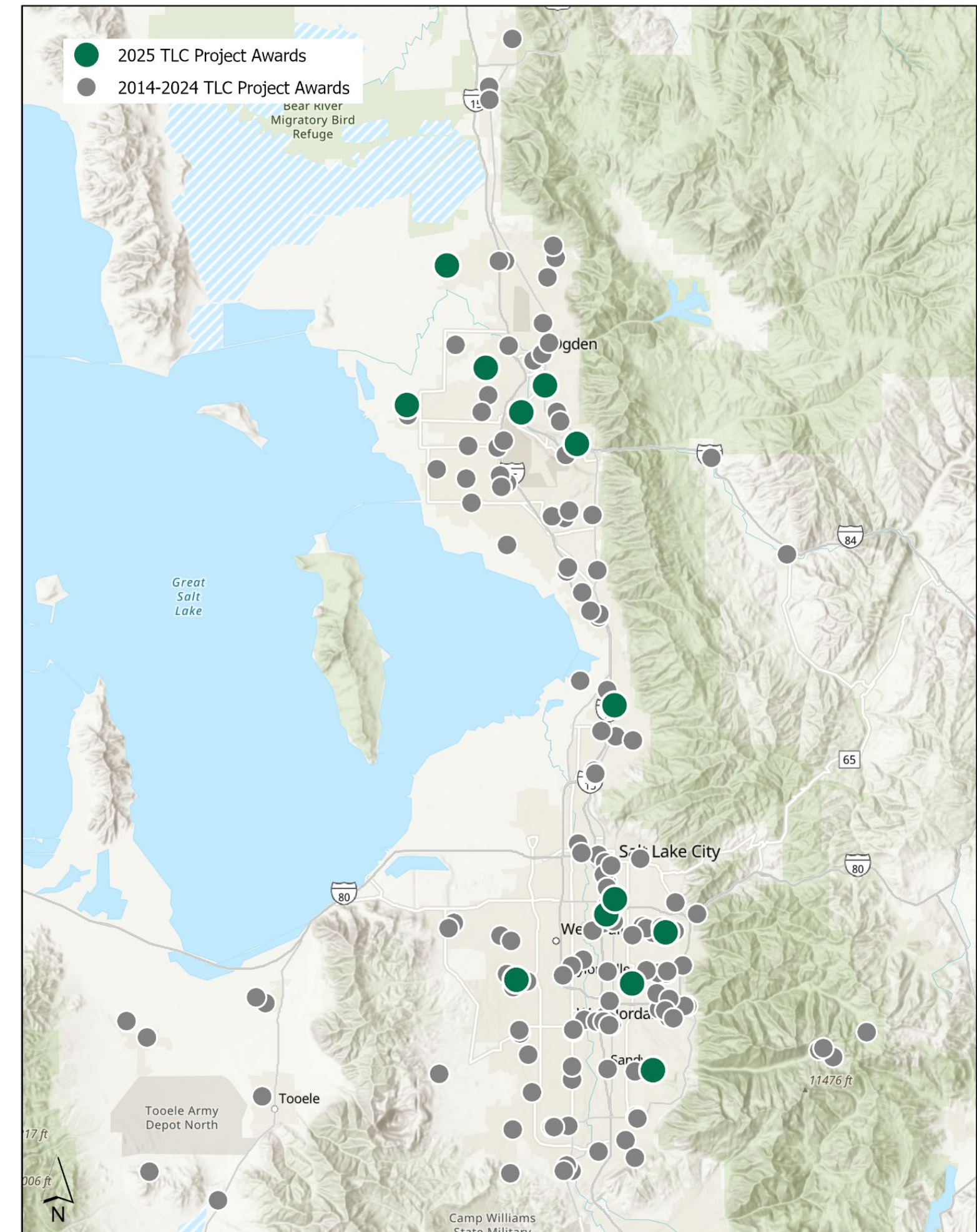
Select a project from the list above to view details.

# 2025 TLC Awards

13 projects!

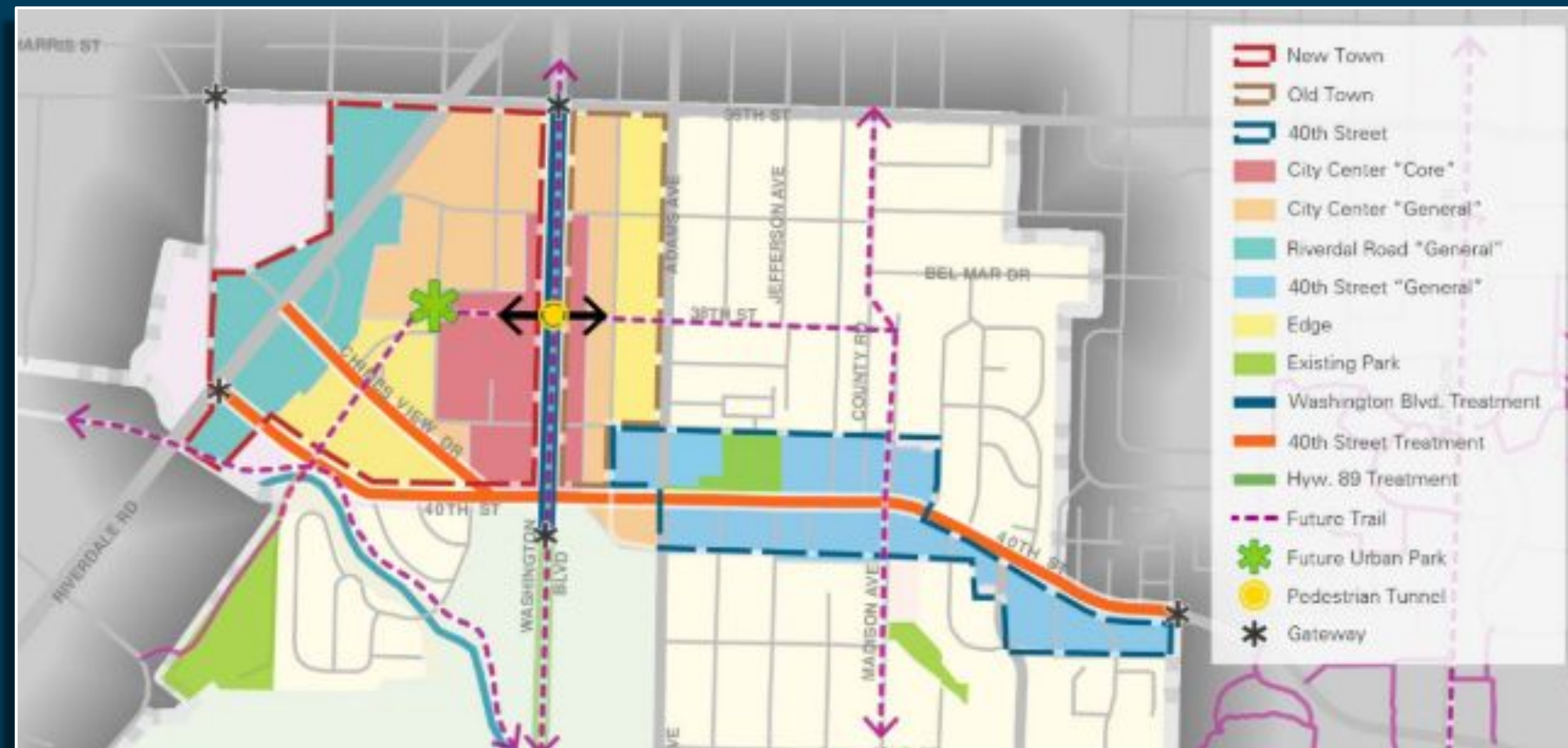
\$1,986k in project funds!

\$1,570k tlc    \$415k local match



# 2025 TLC Awards: Small Area Plans, Centers

- Murray Oakwood Village Center Small Area Plan
  - \$102.5k TLC, \$110k total
- Riverdale “Stringtown” Master Plan
  - \$200k TLC, \$260k total
- South Ogden City Center Master Plan
  - \$110k TLC, \$120k total



# 2025 TLC Awards: City Wide Plans and Ordinances

- **Millcreek ADA Transition Plan**
  - **\$13.25k TLC, \$14.25 total**
- **Sandy Land Development Code Update**
  - **\$200k TLC, \$325k total**
- **South Salt Lake City Zoning Ordinance Update**
  - **\$250k TLC, \$275k total**
- **Hooper Zoning Ordinance and Design Standards**
  - **\$90k TLC, \$100k total**
- **Plain City General Plan and Land Use Code Update**
  - **\$120k TLC, \$130k total**
- **Uintah General Plan**
  - **WFRC staff time**
- **West Haven Land Use Analysis**
  - **\$50k TLC, \$56.7k total**

# 2025 TLC Awards: Contextual Transportation

- **Kearns 5400 South Corridor Study**
  - **\$120k TLC, \$150k total**
- **South Davis Greenway Feasibility Study**
  - **\$115k TLC, \$145k total**
- **Municipal Services District Transportation Master Plan**
  - **\$200k TLC, \$300k total**



# PLANNING TECHNICAL ASSISTANCE

LAND USE + TRANSPORTATION + ECONOMIC DEVELOPMENT

---

**Transportation and Land Use Connection**  
region wide, competitive technical assistance  
program

---

**Station Area Planning**  
surrounding fixed transit and BRT, rolling  
applications

---

**Other staff support and expertise**  
reach out!





*Coming Soon:*  
**bikeways.utah.gov**  
(web map and data project)

Active Transportation Committee  
April 8, 2025

Bert Granberg, WFRC Analytics

# Mapping the Landscape of Cycling Opportunities

*The value of knowing what's on the ground...*

- *that we can use now...*

- *as a seasoned cyclist?*
- *as a cautious, but interested cyclist?*

- *to build upon, in the future...*

- *as a city or regional planner?*
- *as a funder, prioritizing projects?*
- *as a citizen advocate?*

**Bikeways GIS map layers:**

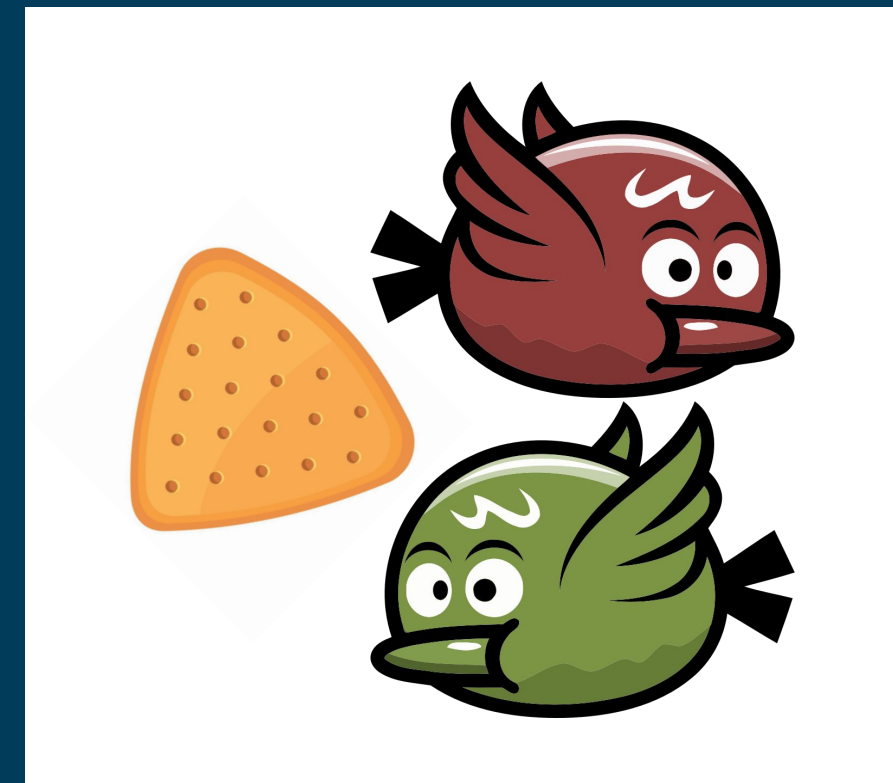
**On-street:** Cycle tracks  
bike lanes & designations

**Off-street:** Trails & Pathways

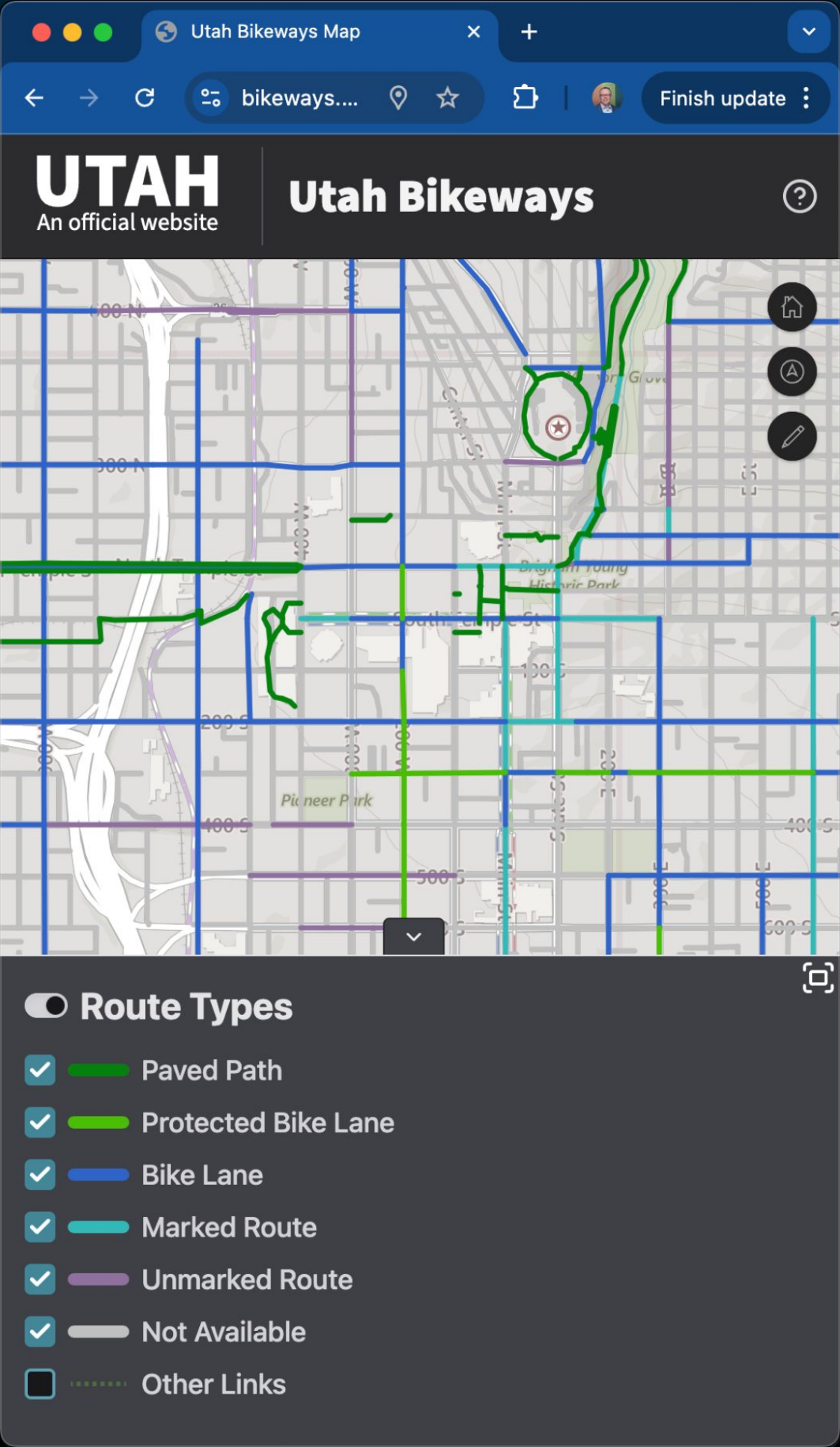
# Can we feed two birds with one scone?

- *#1 Keep bicycle map data current with latest additions:*
  - *You just completed a bike lane or pathway project – let's get it on the map!*
- *#2 Create a product for basic, public use*

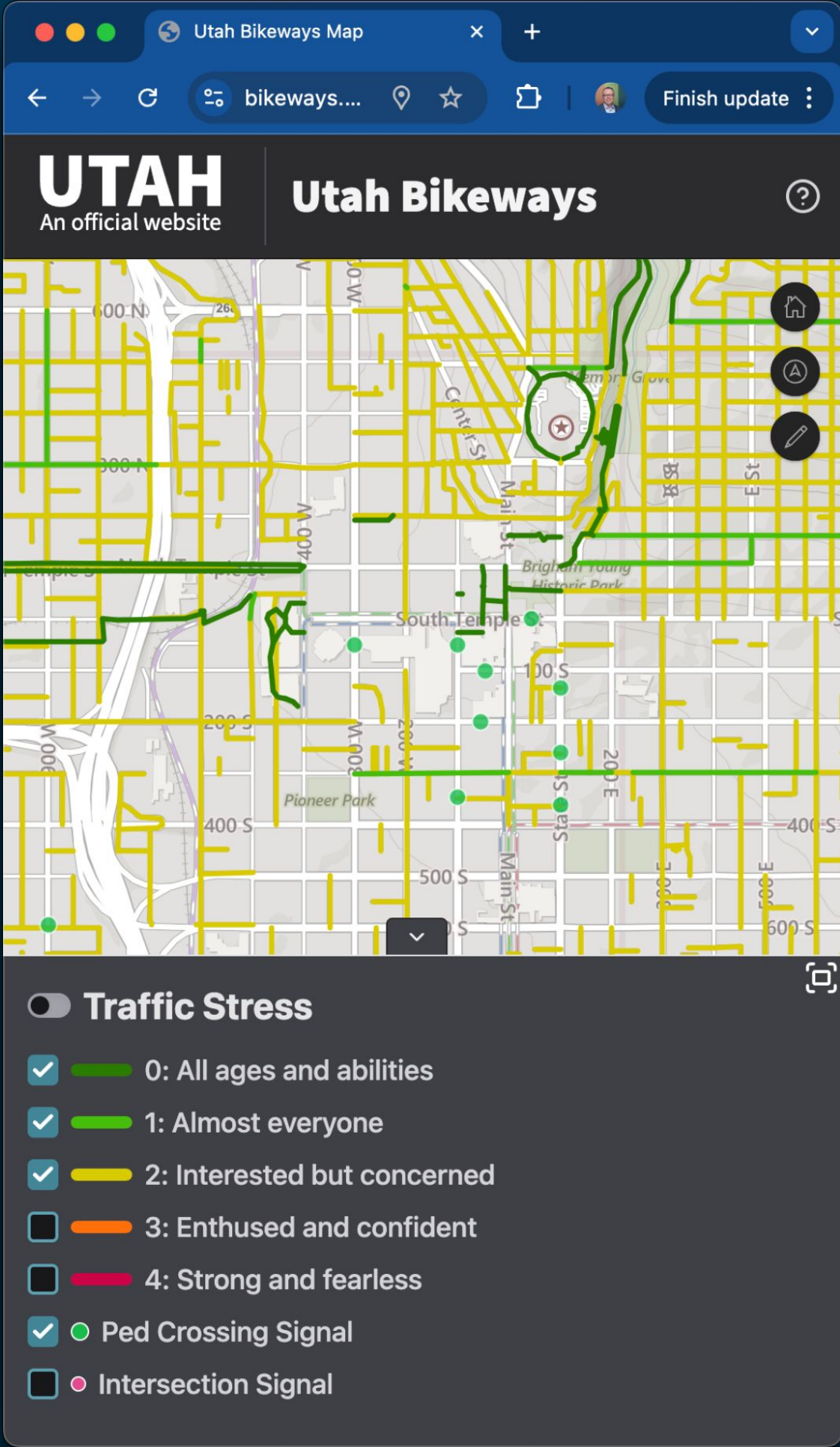
→ [bikeways.utah.gov](https://bikeways.utah.gov) (release target, late May 2025)



Route  
Type  
View  
(default)

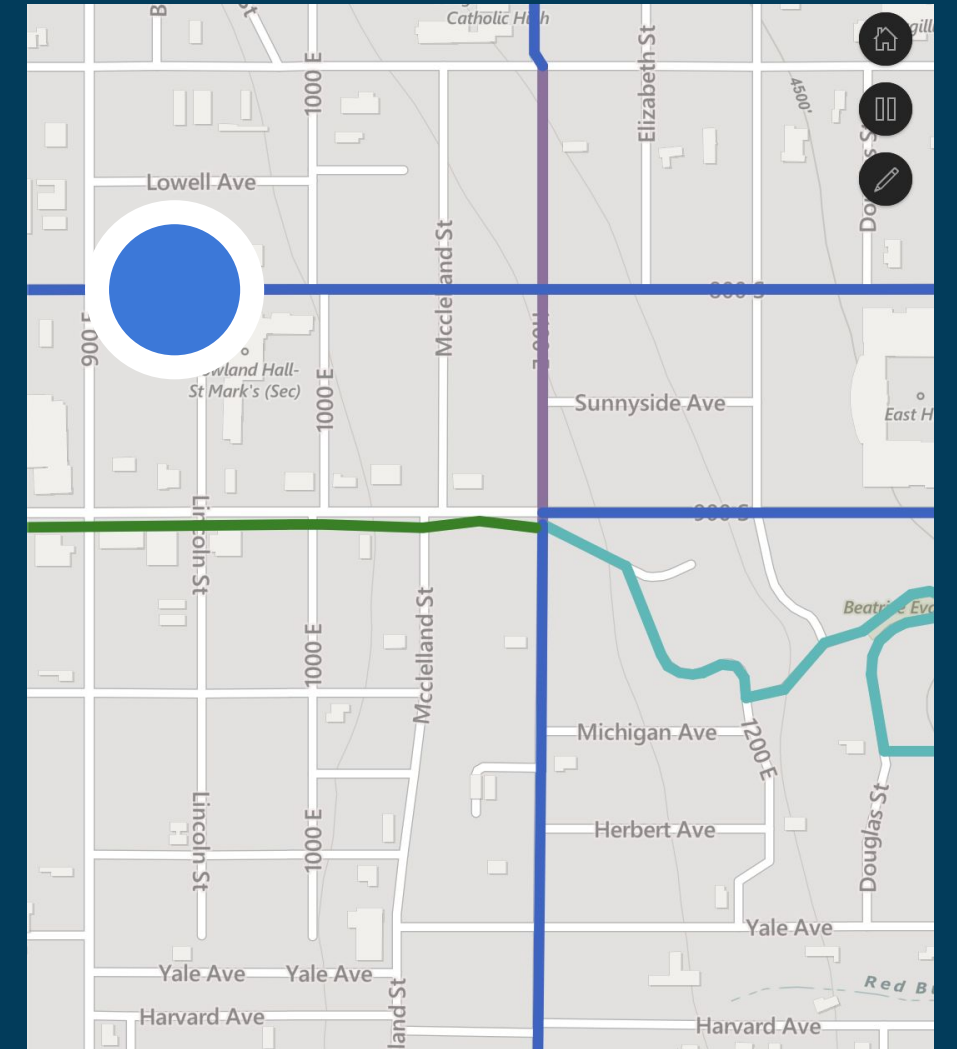


Level of  
Traffic  
Stress  
View



# bikeways.utah.gov features:

- Layer control for both *Route Types* and *Levels of Stress*
- Mobile-first design
- Works with devices' built-in GPS "blue dot" →
- Submit and direct feedback
- Enables quick update turnarounds
- Seamless (*within Utah*)
- Downloadable GIS Data



# Contributors:

*App dev, hosting, data: Utah Geospatial Resource Center*

*Data upkeep partners:*

- *Regional*
  - *WFRC area update: Summer 2024*
  - *MAG area update: Summer 2023*
  - *Forthcoming updates: UDOT, Dixie, Cache*
- *City GIS data and other feedback submissions*

*Update cycle:*

- *Annual updates (winter)*
- *Major review (with aerial photography releases)*
- *Ongoing editing*



# Thank you

---

*Coming Soon:*  
**bikeways.utah.gov**

Bert Granberg, [bgranberg@wfrc.org](mailto:bgranberg@wfrc.org)



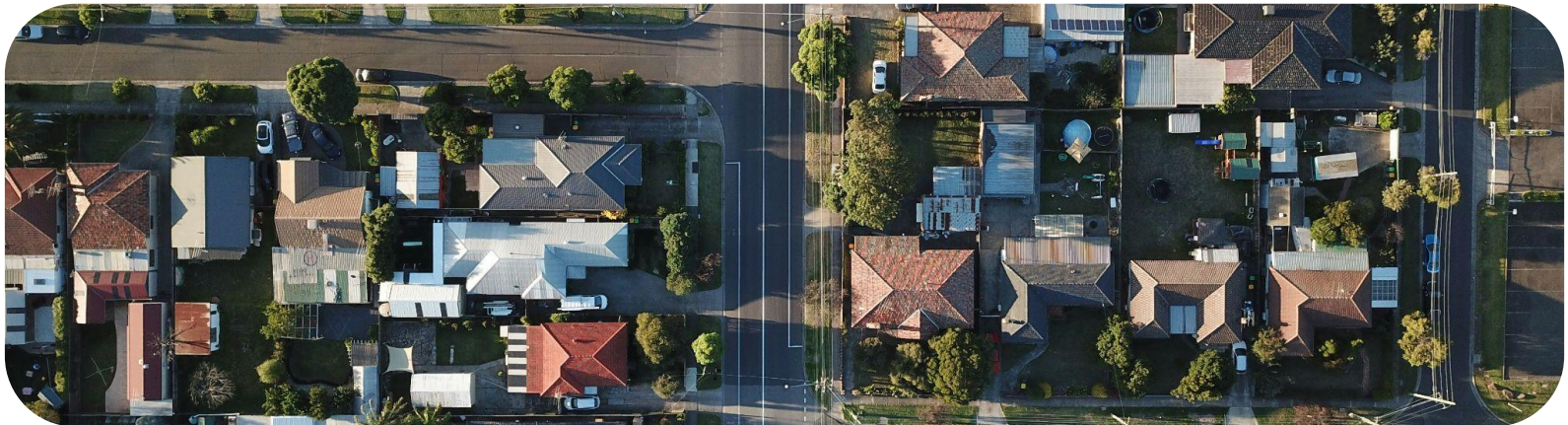
# 2025 LEGISLATIVE SESSION OVERVIEW



# SB195, Transportation Funding Amend. (Harper)

## Requires enhanced connectivity planning in municipal general plans

- Transportation and traffic element of general plan should be updated to identify priority connections that remedy physical impediments, such as water conveyances
- the priority connections should enhance vehicle, transit, bike and pedestrian access to significant economic, recreational, or other priority destinations.



# SB195, Transportation Funding Amend. (Harper)

Prohibits SLC from proceeding on “highway reduction” projects unless approved by UDOT in a **mobility plan**

- “highway reduction strategy” means having the potential to permanently decrease the number of vehicles that can travel on the roadway per hour, including reducing the number of motorized vehicle travel lanes or narrowing existing lanes
- limited to arterial or collector highways in study area: W of Foothill, N of 2100S, E of I-15, and S of 600N
- SLC required to seek input from stakeholders (including business owners, commuters, and residents)

*Also requires SLC to present a **mobility and environmental impact analysis** and present to legislative interim by October 2025 (analysing impacts to mobility, traffic flow, pedestrian and non motorized vehicle flow, the economy, public health, air quality, etc.*

# HB290, Bike Lane Safety Amendments (Mauga)

---

- Defines “Bicycle Lane” as a designated lane for exclusive use of bicycle, electric bicycle and motor assisted scooter traffic.
- Adds as a moving violation for (1) driving within a bike lane, and (2) obstructing a bike lane - except in certain circumstances
- Promotes improved biking safety
- Enables transportation choices



# Citation on Connecting Communities

---

- Recognizes state and federal multimodal transportation investments, land use policies and the collaborative approach between Utah partners to connect communities.
- Urges state leaders and other partners to continue integrating transportation and land use policies



# HB554, Bicycle Rack Amendments (DID NOT PASS)

- Would create a state grant program to support cities with installing public bike racks, benefiting local businesses and cyclists

