



Wasatch Choice Vision

2019-2050 Regional Transportation Plan



WASATCH CHOICE

— 2050 —

Economic Development

Comprehensive
Economic Development
Strategy



Land Use

Transportation
and Land Use
Connection

Local Plans and
Ordinances

Transportation

Regional
Transportation
Plan



Wasatch Choice Vision Goals



Livable and healthy communities



Access to economic and educational opportunities



Manageable and reliable traffic conditions



Quality transportation choices



Safe, user friendly streets



Clean air



Housing choices and affordable living expenses



Fiscally responsible communities and infrastructure

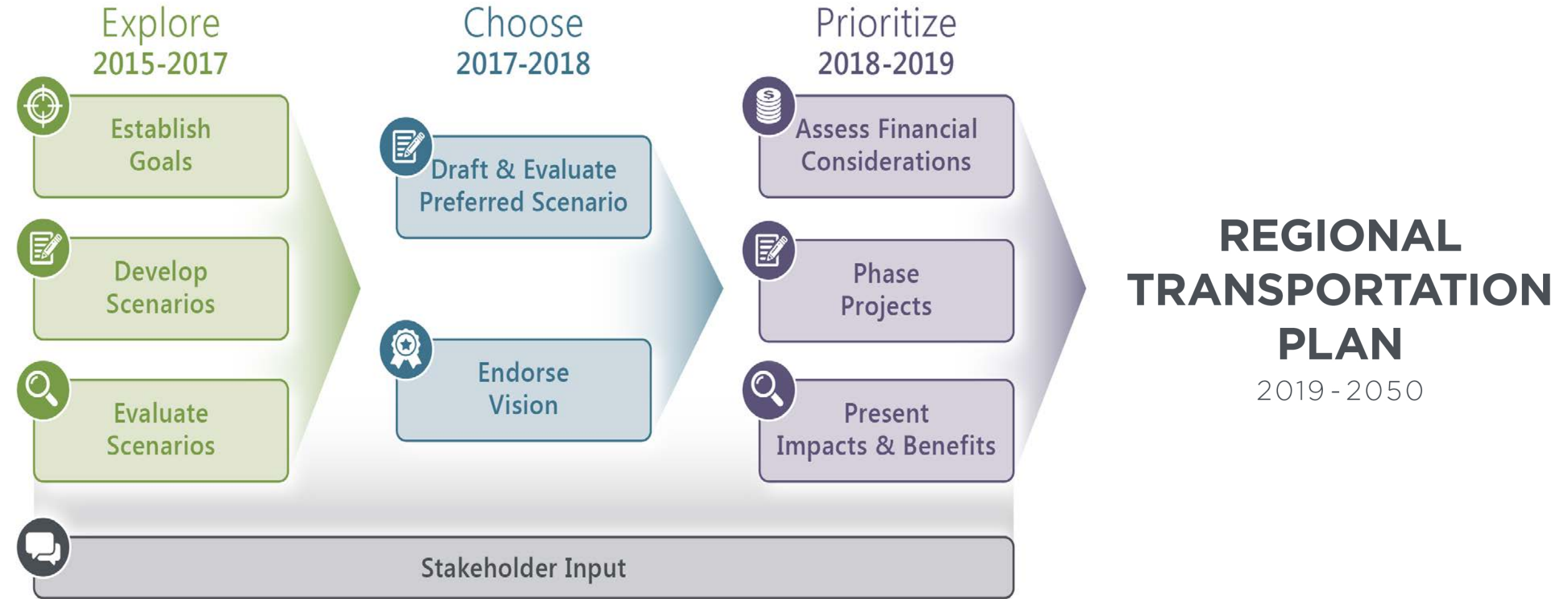


Sustainable environment, including water, agricultural, and other natural resources



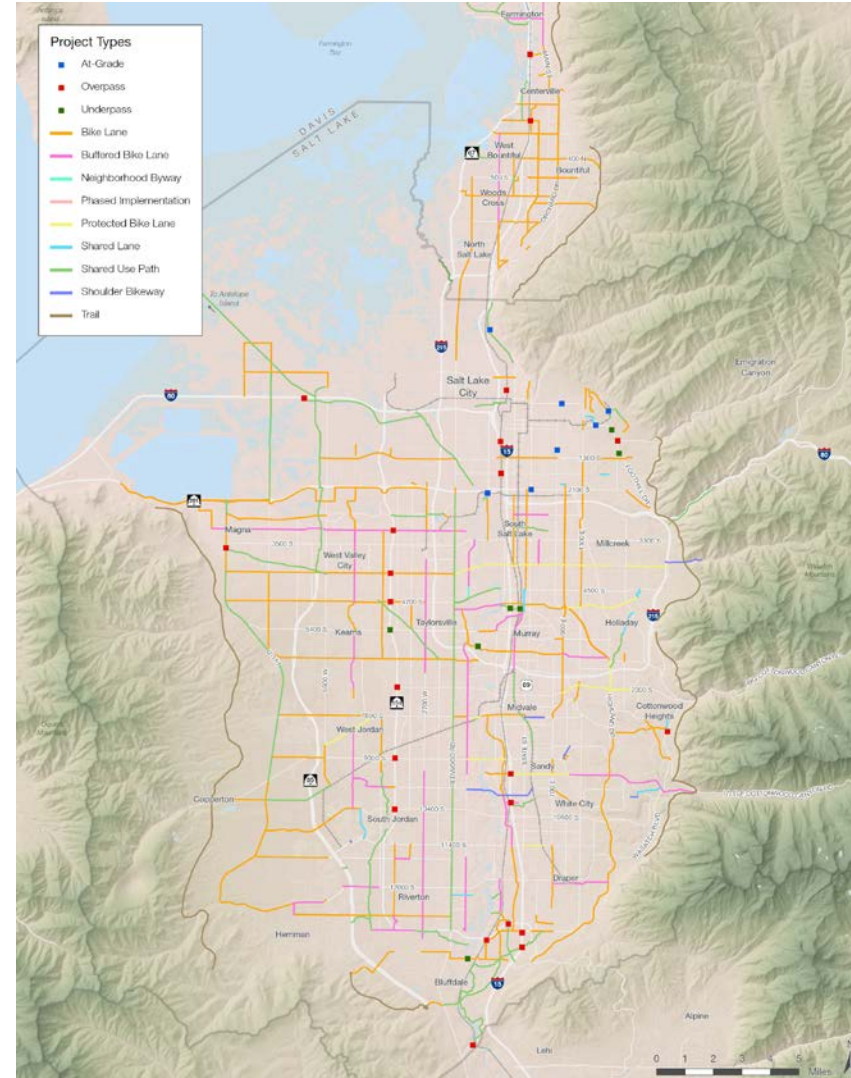
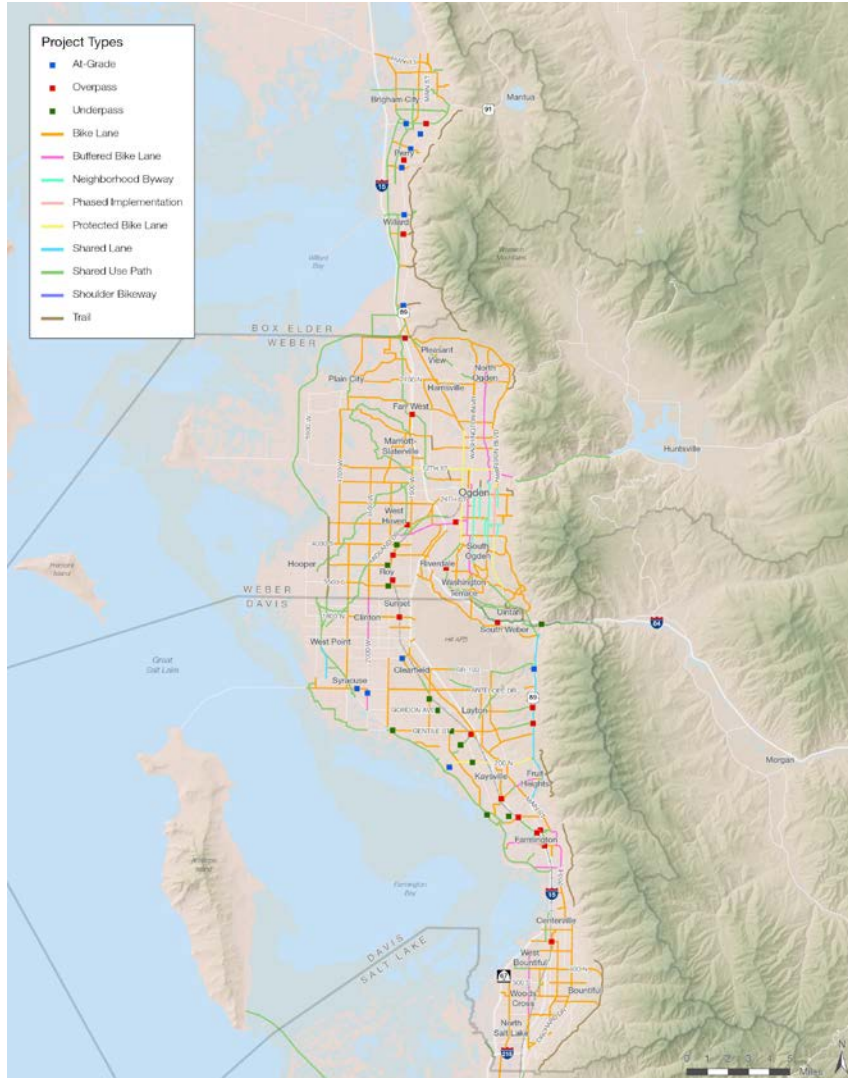
Ample parks, open spaces, and recreational opportunities

Wasatch Choice and RTP Process



Active Transportation Highlights

- 633 projects, 1002 miles, \$461 M



RTP Website

← → ↻ ⓘ Not secure | wfrf.org/vision-plans/regional-transportation-plan/2019-2050-regional-transportation-plan/ ☆

WASATCH FRONT REGIONAL COUNCIL

Home About Committees Vision & Plans Programs Maps & Data Studies Public Involvement Contact Q

2019-2050 Regional Transportation Plan Home » Vision & Plans » Regional Transportation Plan » 2019-2050 Regional Transportation Plan

In-Progress 2019-2050 RTP

Overview

WASATCH CHOICE
2050

The Regional Transportation Plan (RTP) is where our Region's future transportation system is born. The 2019-2050 RTP is a long-range blueprint that sets forth the 31-year strategy for regional transportation investments for all modes of transportation.

EXPLORE | CHOOSE | PRIORITIZE | IMPLEMENT

Explore

- Establish Goals
- Develop Scenarios
- Evaluate Scenarios

Choose

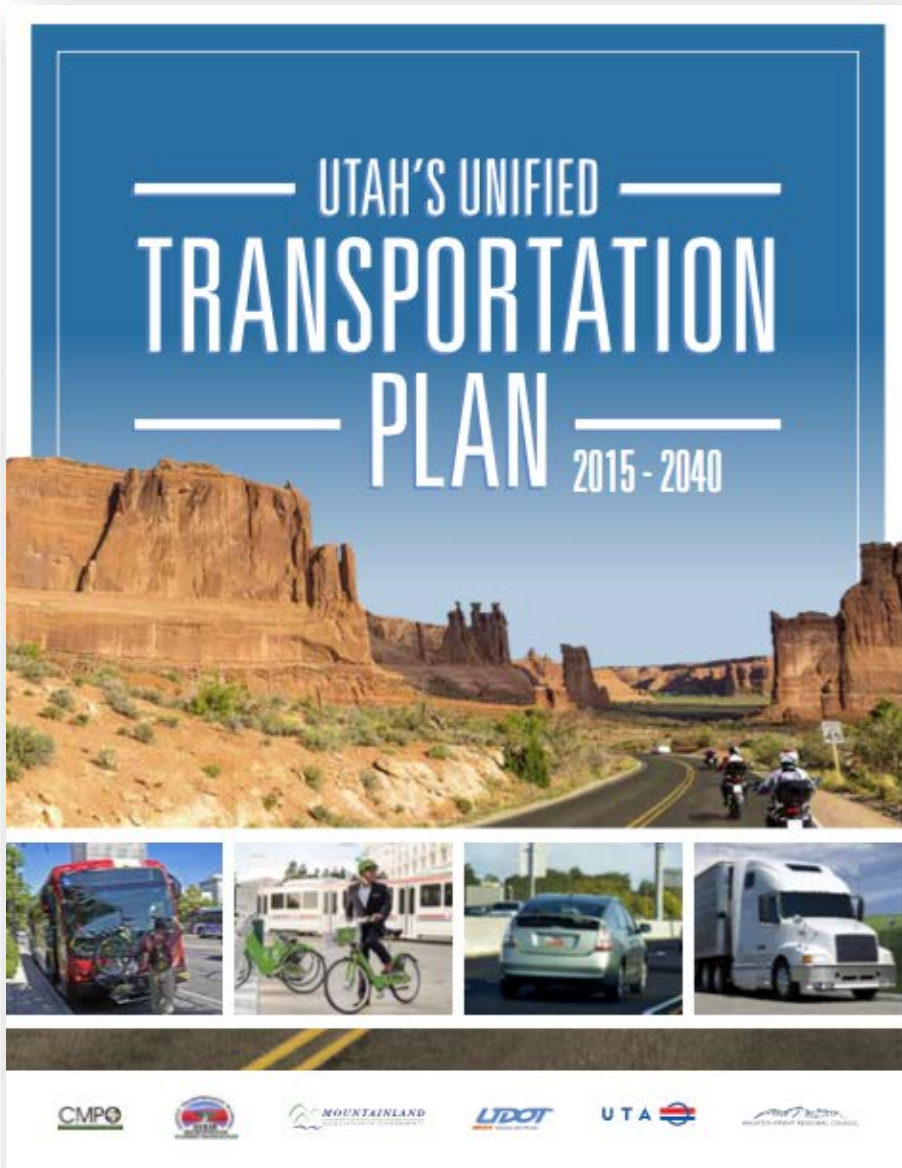
Privacy - Terms

Why does this matter?

- Prioritize funding and construction of regional projects
- Provide regional framework to support local networks
- Informs Unified Plan



2019-2050 Utah's Unified Transportation Plan



- Unified effort by UDOT, UTA, and MPOs
 - Coordinating all RTPs
- Past efforts in 2007, 2011, and 2015
- Collaborative
 - Timing
 - Financial assumptions
 - Performance measures
 - Safety
 - Active Transportation
- New Unified Plan – October 2019



Wasatch Choice Vision

2019-2050 Regional Transportation Plan

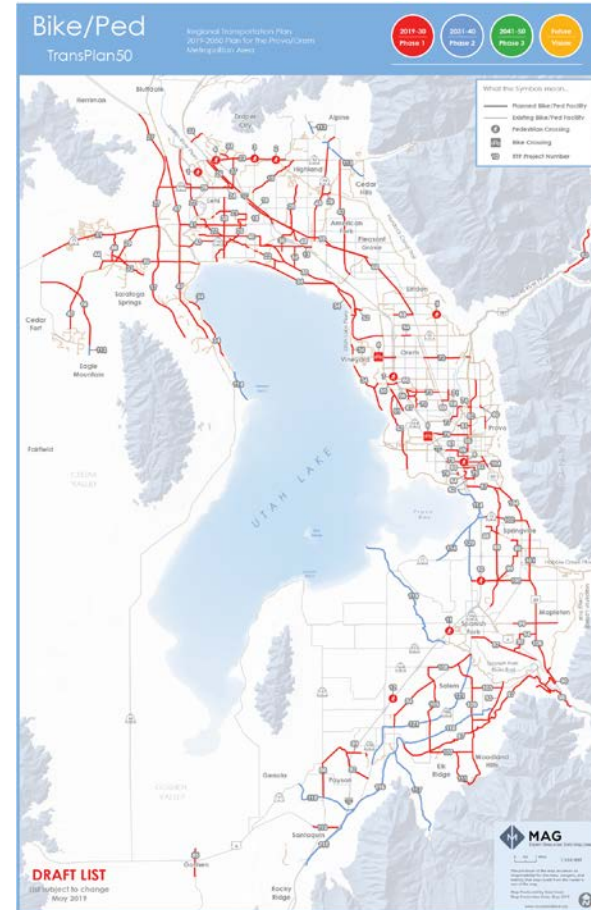


M A G

Expert Resources. Enriching Lives.



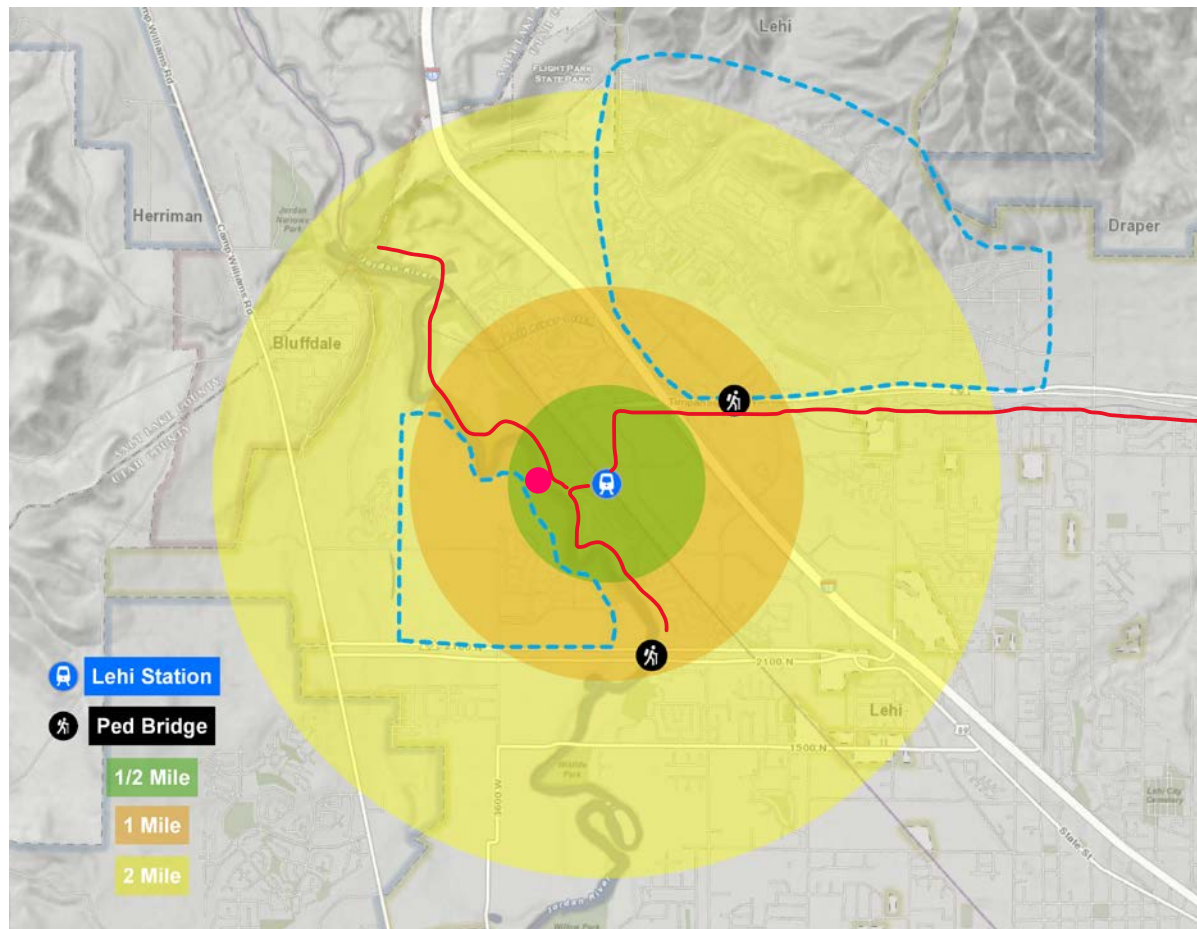
TransPlan50 emphasis is on making connections – to expand the network and connections to transit.



40,000 residents without comfortable A/T connection to MCT, JRT, or Lehi FrontRunner

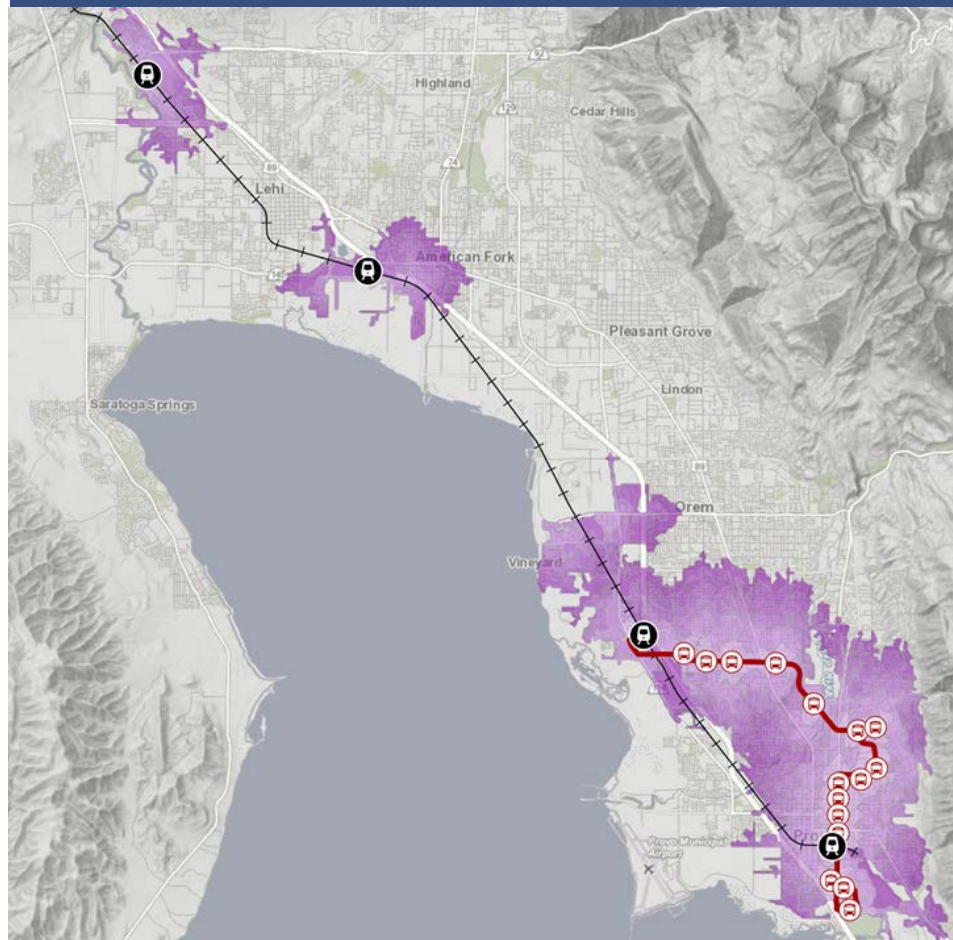
Murdock Canal Trail – Direct with TIGER bridge

Jordan River Trail – 3.5 miles existing, ½ mile new





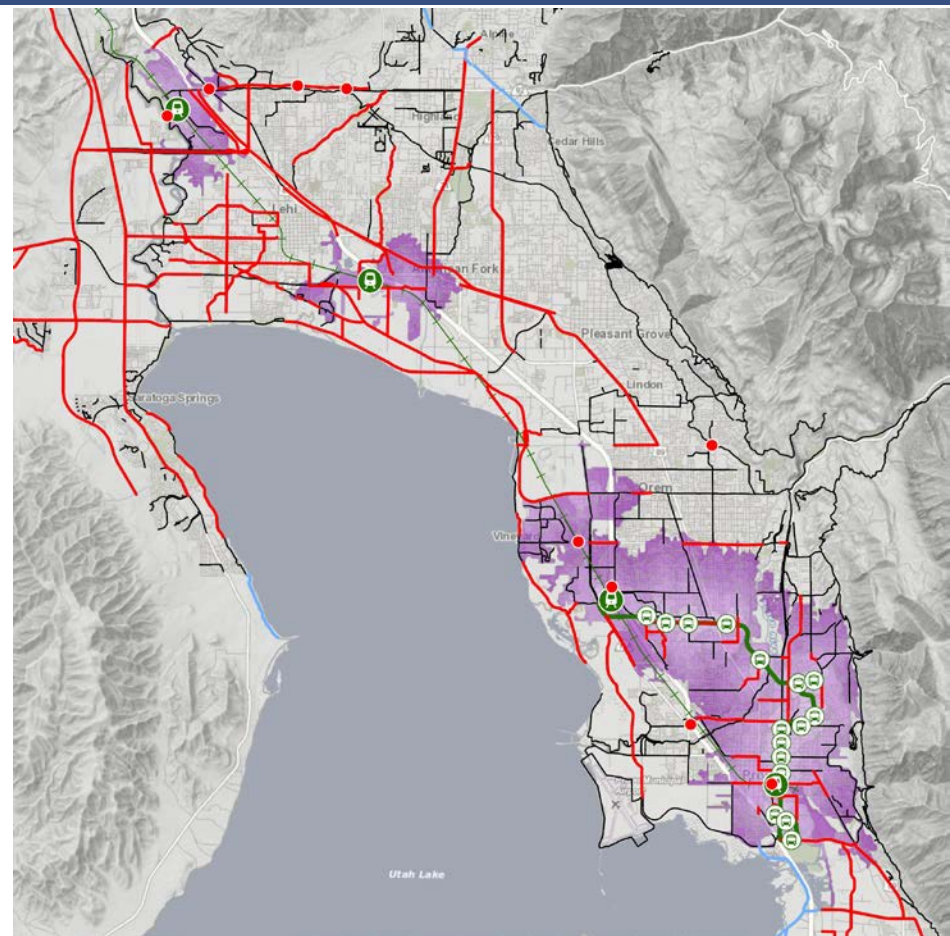
Network Analysis to find existing walk and bike sheds around fixed transit stations





Black = Existing

Red = New TransPlan50

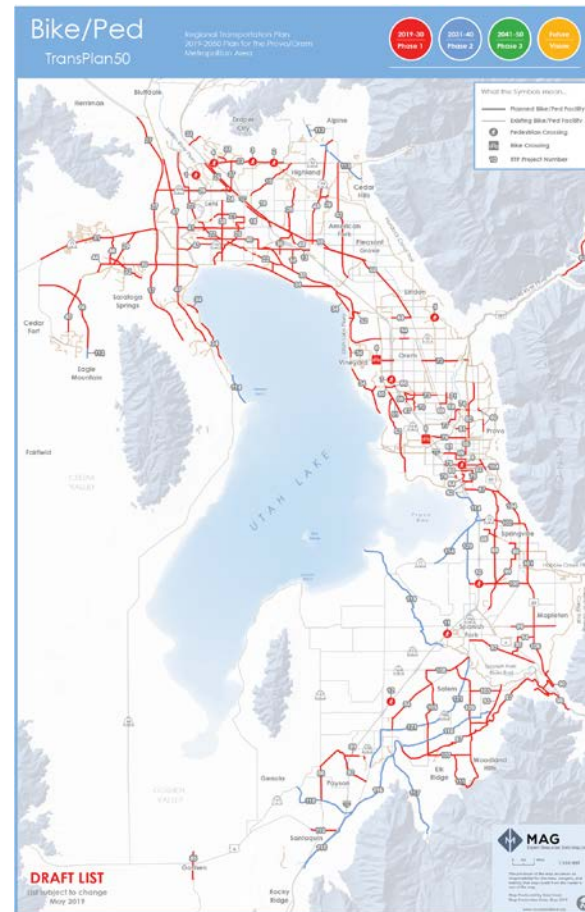




Separated Paths – 213 miles

Other Facilities – 100 miles

Total Cost - \$153 million





Contact Info:

Jim Price

801-229-3848

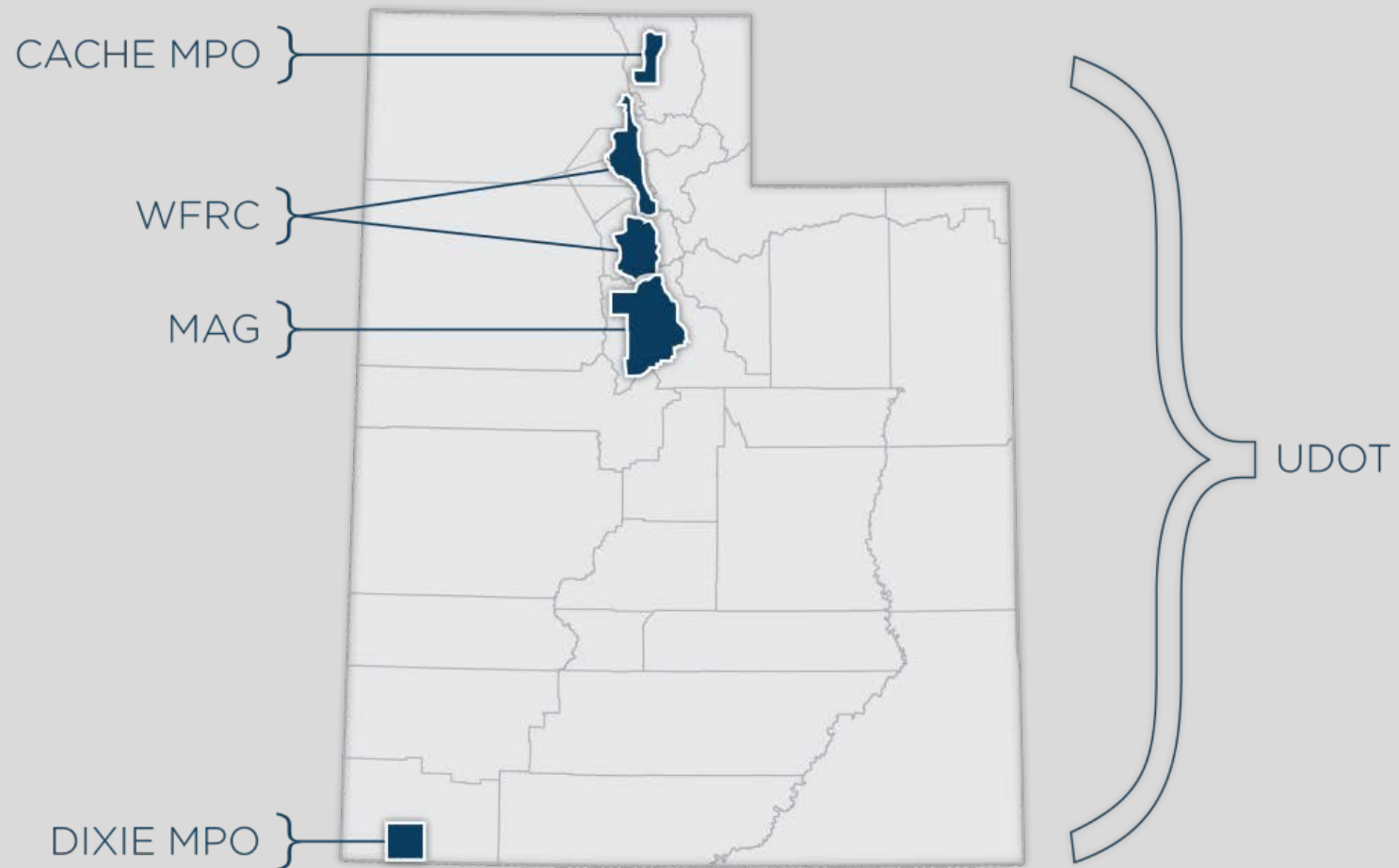
jprice@mountainland.org

Statewide Long Range Plan

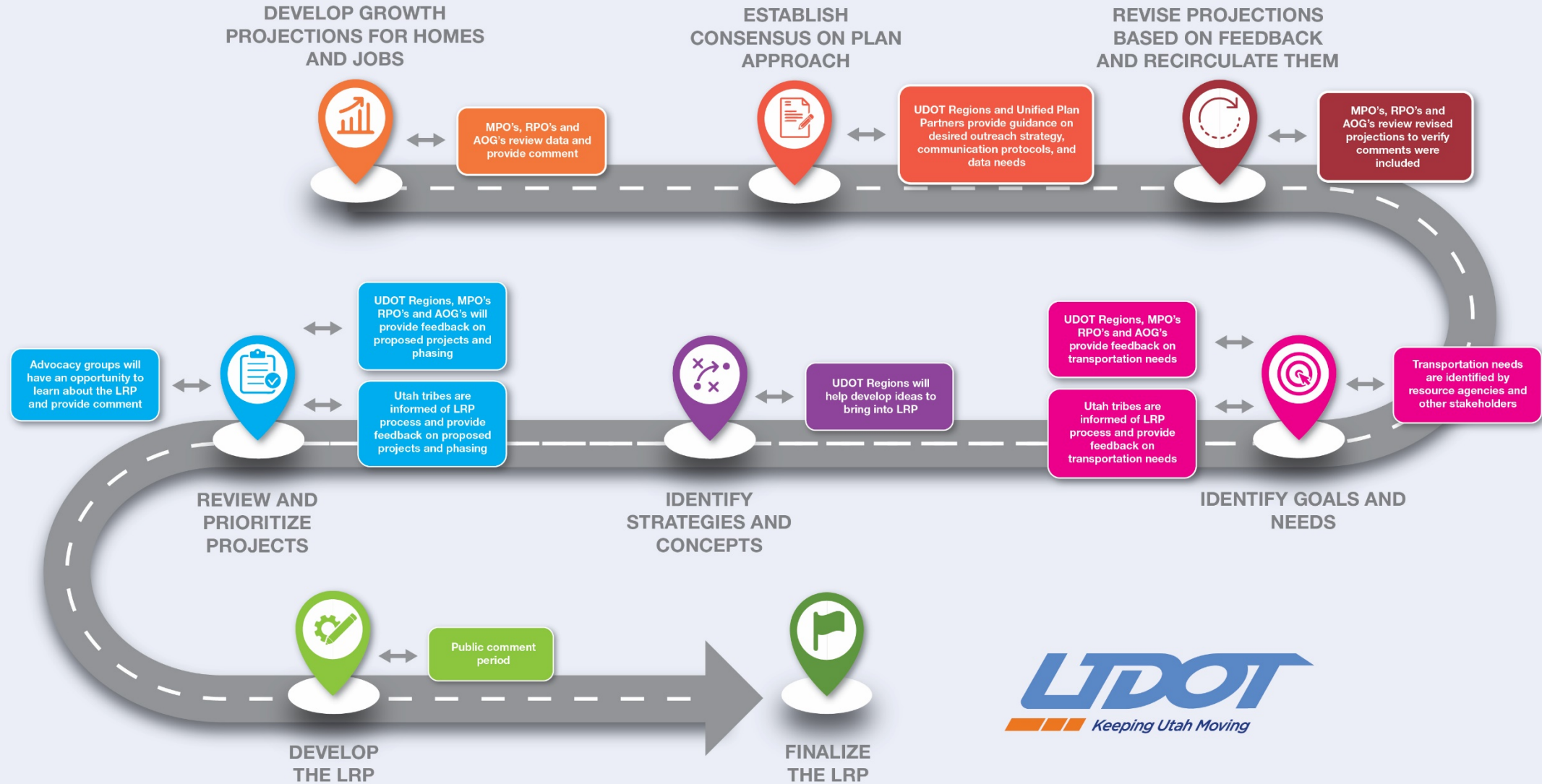
Christopher Chesnut - cchesnut@utah.gov



PLANNING BOUNDARIES



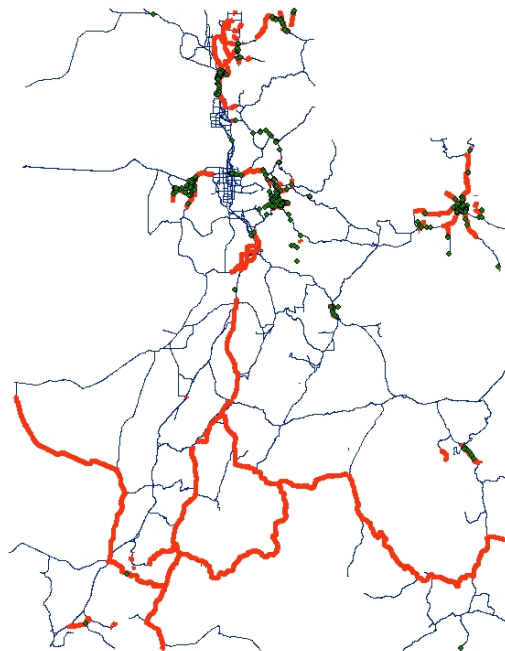
UDOT LONG RANGE PLAN



Including Active Transportation

- Collect existing Active Transportation Plans
- Align with planned roadway improvements

937 Projects, 5,000 to 6,000 Miles of Improvements, Cost is unknown at this time



Next Steps

- Publish projects for public comment – June 2019
- Publish Document/Map on UDOT site - Fall 2019

Who to contact with Questions

Statewide Long Range Plan

Christopher Chesnut - cchesnut@utah.gov



Kaysville Active Transportation Plan

Connecting Our Community
Through Safe Walking & Bicycling

MARCH 2016

Presentation: 6/12/2019

Figure 1.8: Kaysville Previously Planned Facilities Map

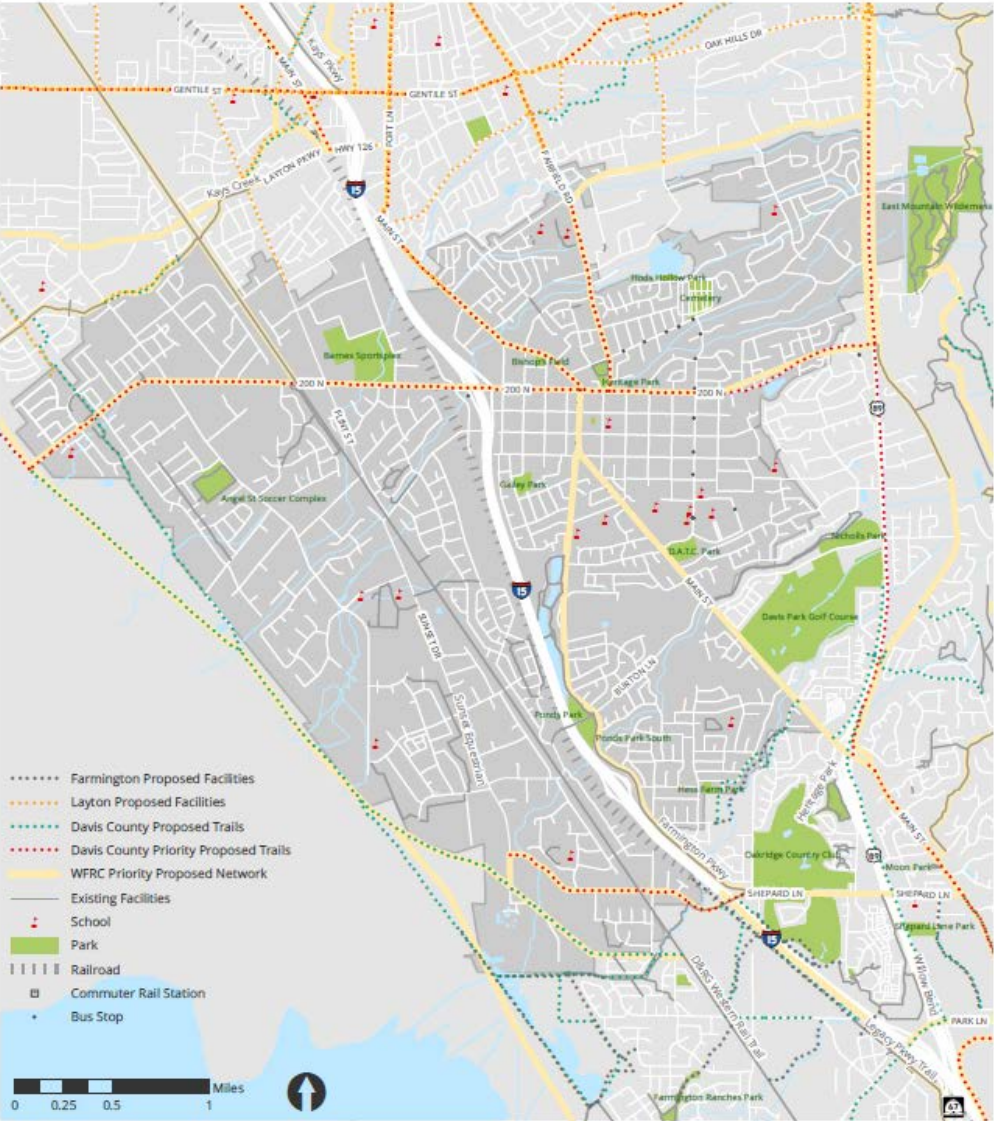


Figure 4.2: Kaysville Recommended Improvements Map





Paved path connecting a neighborhood to Angel St Soccer Complex

3: Existing System & Needs Analysis

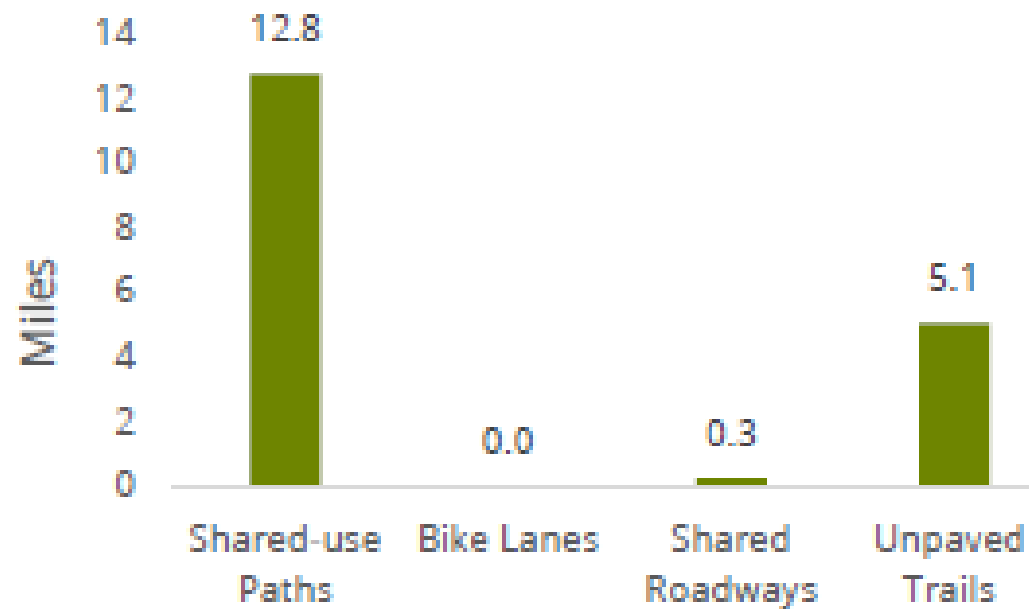
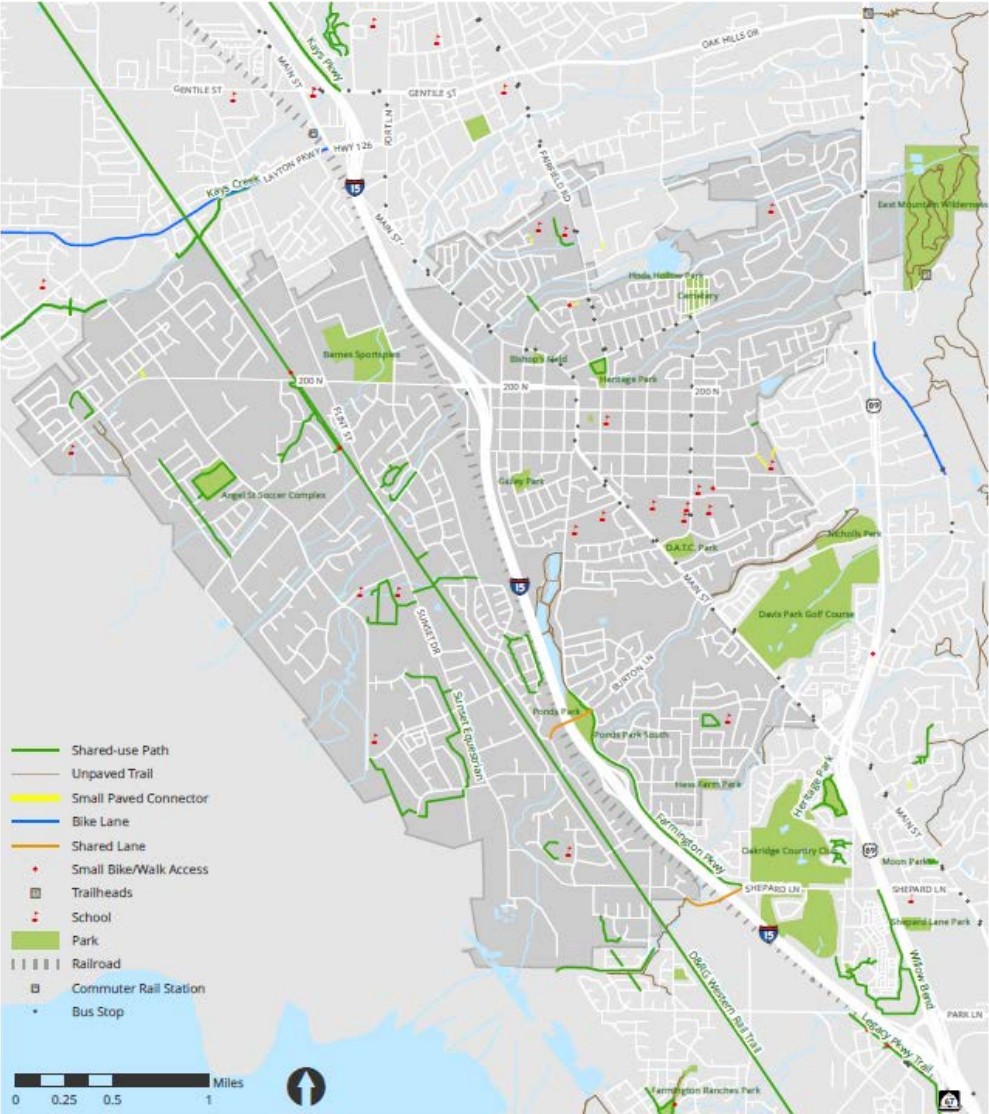
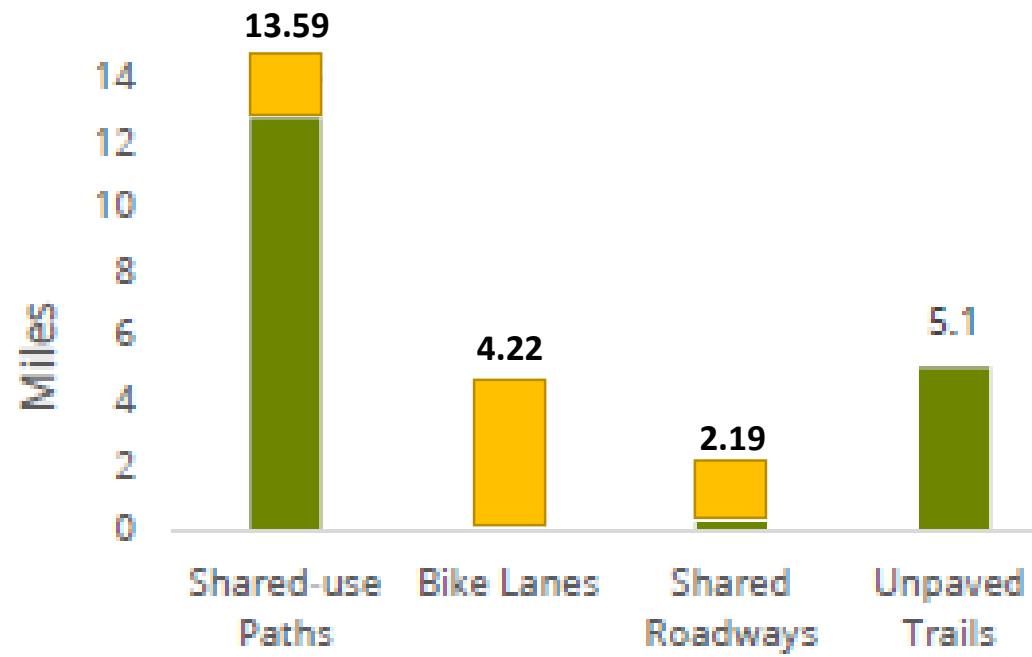




Figure 3.3: Kaysville Existing Bicycling & Walking Facilities Map

Figure 3.3: Kaysville Existing Bicycling & Walking Facilities Map







Attendees at the beginning of the public open house at the Kaysville Library

2: Public Involvement



Open house attendees included residents of all ages, including this young group



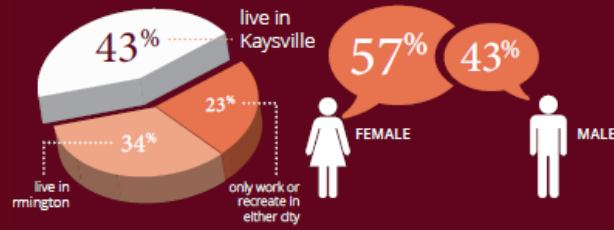
Project team members spoke with the public, listened to concerns, and assisted them in drawing desired improvements on the maps provided



Attendees were greeted with bicycling and walking-themed treats as they left the open house

Joint Community Survey Results for Kaysville

1,023 Total number of survey respondents



36-45
YEAR OLDS

Most common age group (36%)

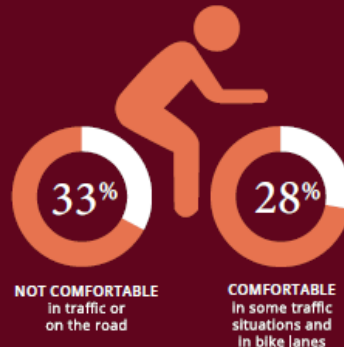
OVERALL WALKING & BIKING CONDITIONS

Walking and bicycling conditions are currently rated, on average, between fair and good

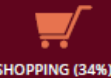
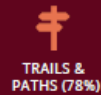


85%
feel comfortable or very comfortable walking

The most common type of person is one that is **not comfortable in traffic and will only ride a bicycle on paths and quiet residential streets.**



Respondents were interested most in walking & bicycling to



Top priorities for investment:



IMPROVE PATHS & TRAILS NETWORK
73%



ADD ON-STREET BIKEWAYS
52%



MORE SIDEWALKS, SHADE TREES & LANDSCAPING
45%



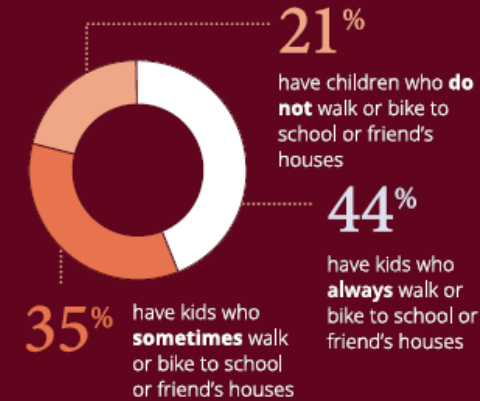
BETTER CROSSINGS
27%



ACCESS TO TRANSIT (Frontrunner & Buses)
25%

WALK & BIKE HABITS

Out of respondents with children:



Since 1969, the percentage of children walking or bicycling to school in the United States has dropped from 50% to 13%.



Public transit use is much higher when the trip begins with walking or biking



Lack of safe crossings, high motor vehicle speeds, and too much traffic were the most cited reasons that their kids did not walk and bike more.

ADDITIONAL COMMENTS



WEST ← → EAST

282 ADDITIONAL COMMENTS

By far, the number one recommendation is **making east-to-west connections safer and more abundant**, especially around Park Lane, FrontRunner, and Station Park



ONE BIG THING



COLLABORATION SUCCESS

TIGER First/Last Mile Project

June 12, 2019



TIGER Grant

- Transportation Investment Generating Economic Recovery (TIGER)
- Project Goal: Reduce and remove barriers to transit access and transportation corridors in order to connect communities, employment centers, educational institutes, public services, and other community resources. This project will improve safety for pedestrian and cyclists, with an emphasis on developing mobility for transportation disadvantaged communities and the creation of ladders of opportunity.



TIGER Grant Award

- \$20 Million in TIGER funds
- \$11.8 Million in matching funds
 - Other State Funds (MAG, WFRC, UDOT)
 - Local Funds (Cities, Counties, UPRR)
 - UTA Local & Prop 1
- Total TIGER Projects \$31.8 Million
- 161 Projects
- First/Last Mile Program Commitment \$75.7 Million
 - Non-TIGER Projects \$43.9 Million
 - Under control of other agencies, outside of UTA
- Environmental complete January 11, 2018 (Categorical Exclusions)
- Grant executed February 8, 2018
- Construction Substantial Completion December 2021



Summary of TIGER Projects

Project Type	# of Projects in Grant
ADA Ramps	60
Bike Lanes	13
Bike Parking-Lockers & Racks	24
Bike Repair Stands	21
Bike Shares	2
Bus Stop Improvements	4
Crosswalk Improvements	4
Pedestrian Bridges	3
Railroad Crossings	1
Sidewalks	4
Multi Use Paths	3
Wayfinding	22
TOTAL	161













TIGER Project Map

UTA First Mile Last Mile



Improving Community Access to
Regional Opportunities

City list:

-  American Fork
-  Bountiful
-  Clearfield
-  Draper
-  Farmington
-  Herriman
-  Lehi
-  Midvale
-  Millcreek
-  Murray



FIRST MILE LAST MILE

Home



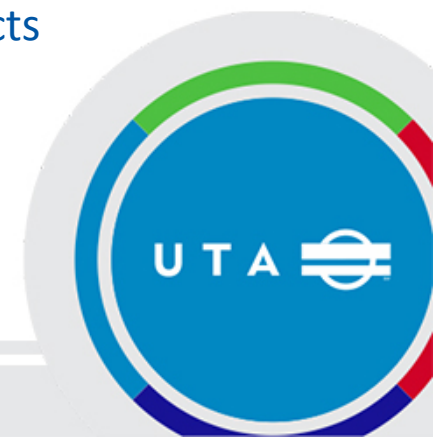
Work



<https://wspgeo.maps.arcgis.com/apps/MapJournal/index.html?appid=170f3647c40c4196bcf418e024680817>

TIGER Agreements/Contracts

- Stakeholder Agreements
 - Local Municipalities
- Professional Services
 - Active Transportation Design: Alta Planning & Design, Inc.
 - TIGER First/Last Mile Designs: Civil Science, Inc.
- Construction Management/General Contractor
 - Granite Construction
 - Phase 1 Pre-Construction Services
 - Base contract for all design coordination
 - Phase 2 Construction Services Amendments
 - Each amendment is for construction of individual projects
 - Seven amendments approved to date



TIGER Project Progress

- 69 projects are complete
 - ADA Ramps: 60 projects (Bountiful & Farmington) (100%) \$503,733
 - Bike Lanes: 7 projects (SOJ_HER_DRA) \$157,254
 - Sidewalk: 2 Projects (Farmington) \$1,110,135



- 3 projects in construction
 - Bike Lanes: 1 project (Ogden) \$3,396,831
 - Multi Use Path: 1 project (SSL) \$615,498
 - Bike Share: 1 Project (Summit County) \$860,437

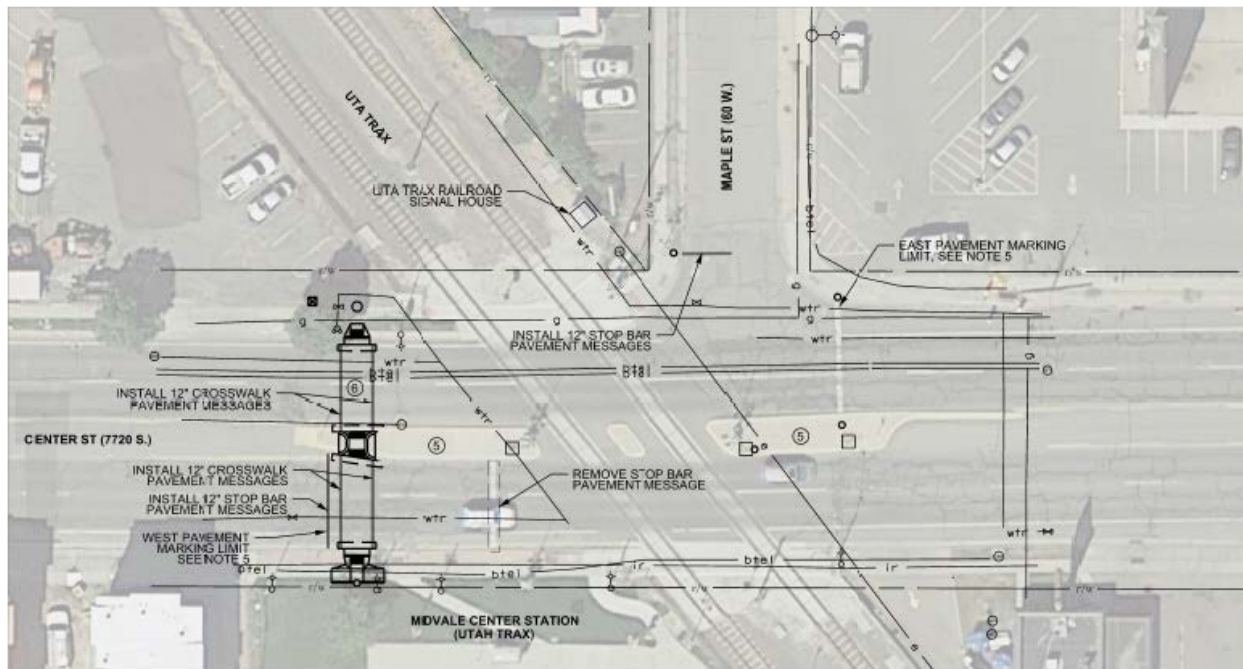
TIGER Project Progress

- 4 projects have completed designs, ready for construction
 - Crosswalk: 1 project (Midvale)
 - Bike Lanes: 3 projects (Tooele, Farmington)
- 5 projects in design phase
 - Overhead Pedestrian: 1 project (Lehi)
 - Multi Use Path: 2 projects (Sandy, SLC)
 - Crosswalk: 1 Project (Farmington)
 - Bike Shares: 1 Project (SLC/GREENbike)



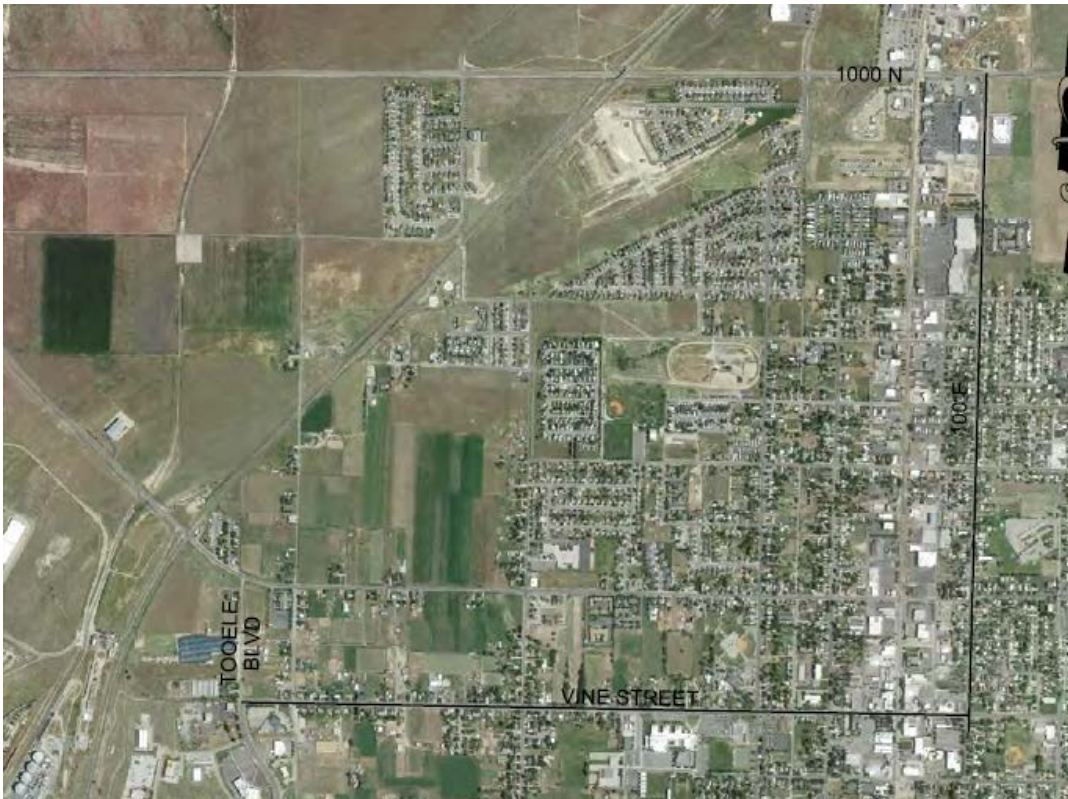
Midvale Crosswalk-Ready for Construction

- New signalized crosswalk across Center St (7720 South), just West of UTA Trax Blue Line adjacent to the Midvale Station.
- Due to the proximity of the signalized crosswalk to the tracks, modifications to the UTA Trax Signal System are also part of the project.
- Project Budget \$575,278



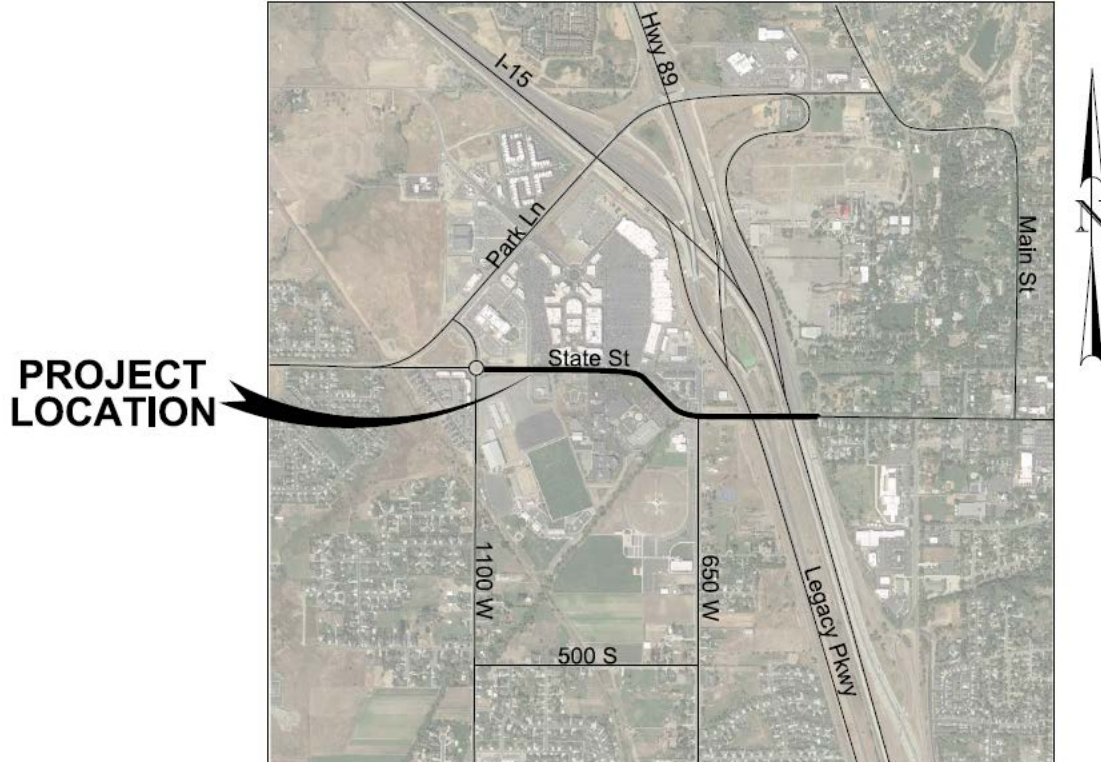
Tooele Bike Lanes-Ready for Construction

- Signage and Striping for approximately 3 miles of new bike lanes along 100 E and Vine St in Tooele.
- Project Budget \$459,787



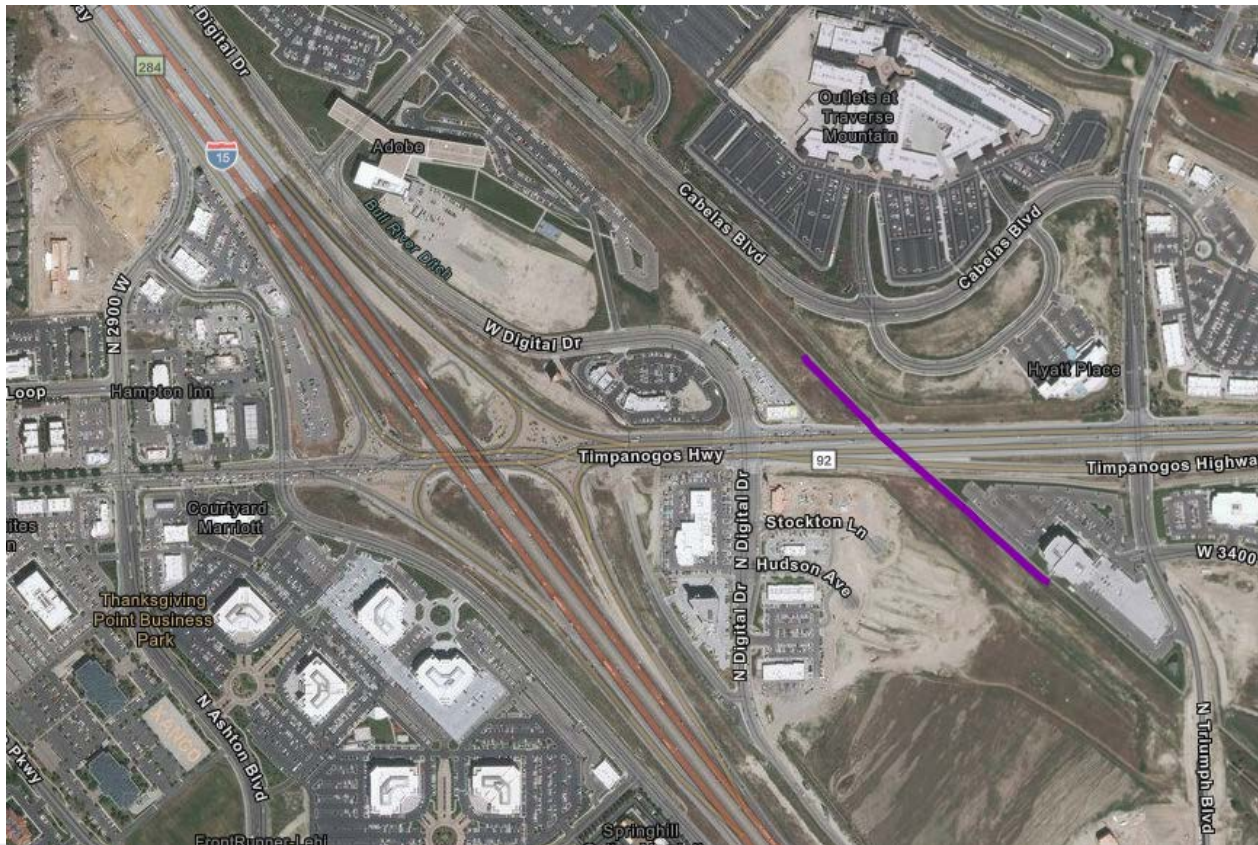
Farmington Bike Lanes-Ready for Construction

- Signage and Striping for new bike lanes along Clark Lane/State Street in Farmington. Includes dedicated bike lanes and shared lanes.
- Project Budget \$27,589



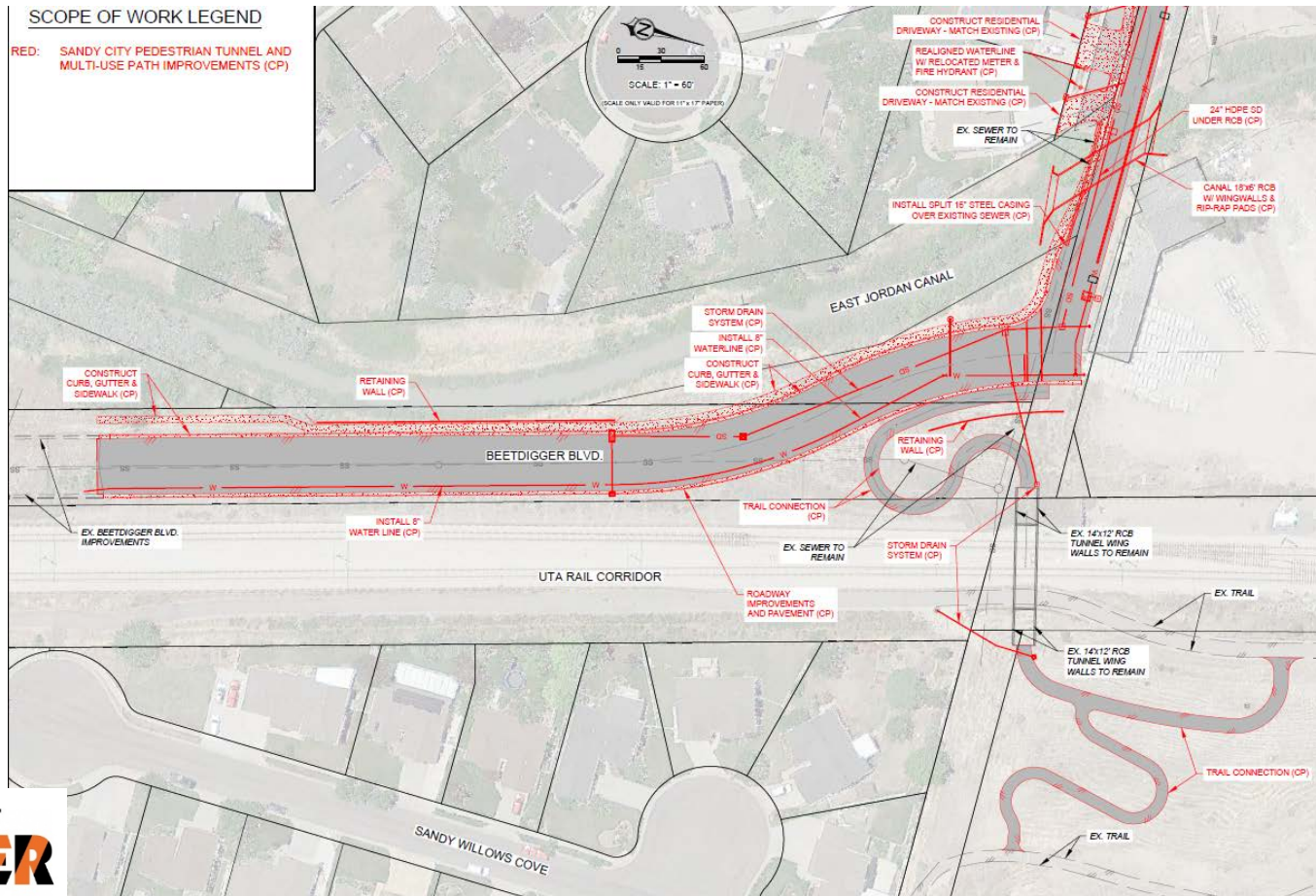
Lehi Overhead Pedestrian Bridge-Design

- New pedestrian bridge over Timpanogos Hwy (SR-92) to provide connection between the north and south legs of the Lehi Rail Trail.
- Project Budget \$5.2 Million



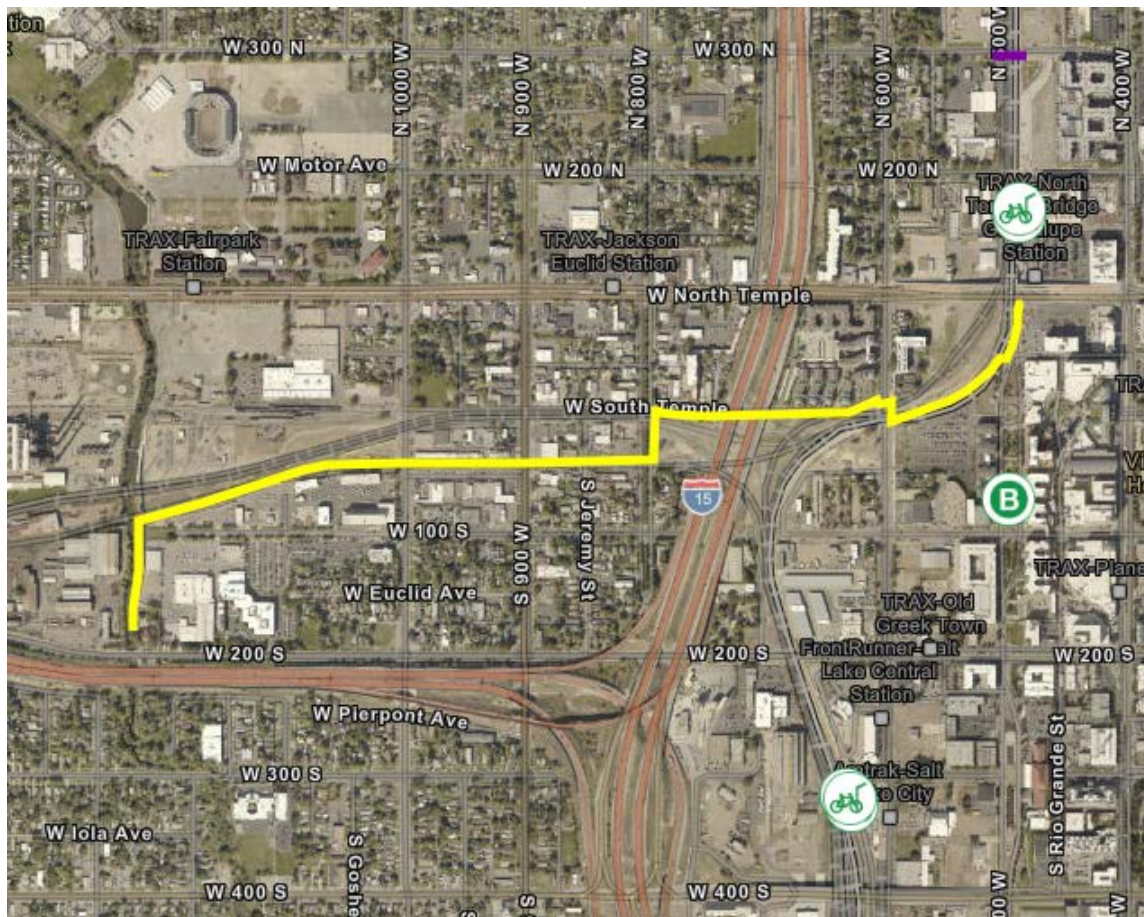
Sandy Multi-Use Path-Design

- Provides East-West connection between 10200 South to Existing Rail Trail and Dimple Dell via and existing buried reinforced concrete box structure under the tracks.
- Project Budget \$3.7 Million



Salt Lake City Multi-Use Path-Design

- Approximately 1.2 mile trail that provides connection between the N Temple Trax & Frontrunner Station and the Jordan River Parkway Trail.
- Project Budget \$2.4 Million



Farmington Crosswalk-Design

- Install hawk signal at crosswalk across S 200 West at Farmington Junior High School.
- Project Budget \$95,616



Salt Lake City Bike Share (GREENbike)-Design

- Install 7 new GREENbike Stations:
 - Central Pointe, Salt Lake County Offices, 900 S/900 E, 900 S/200 W (Central 9th), 800 S/400 W (Artspace Solar Gardens), Proper Burger, 50 s/500 W (Gateway)
- Project Budget \$869,451



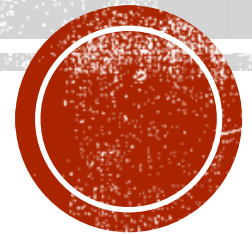
Questions?



SCOOTERS IN OGDEN

The Good, Bad and the Ugly

The **UGLY**, **BAD** and the **GOOD**





**CURRENTLY NO LAW RESTRICTING
THE DEATH SENTENCE FOR MENTALLY
ILL DEFENDANTS**





SCOOTERS IN OGDEN

THE UGLY





Somone tell me who this is please 🤔





THE BAD





Courtesy: Dustin Booker



NEW AT 5:30

00:00 - 01:28

E-SCOOTER INJURIES IN OGDEN



CC

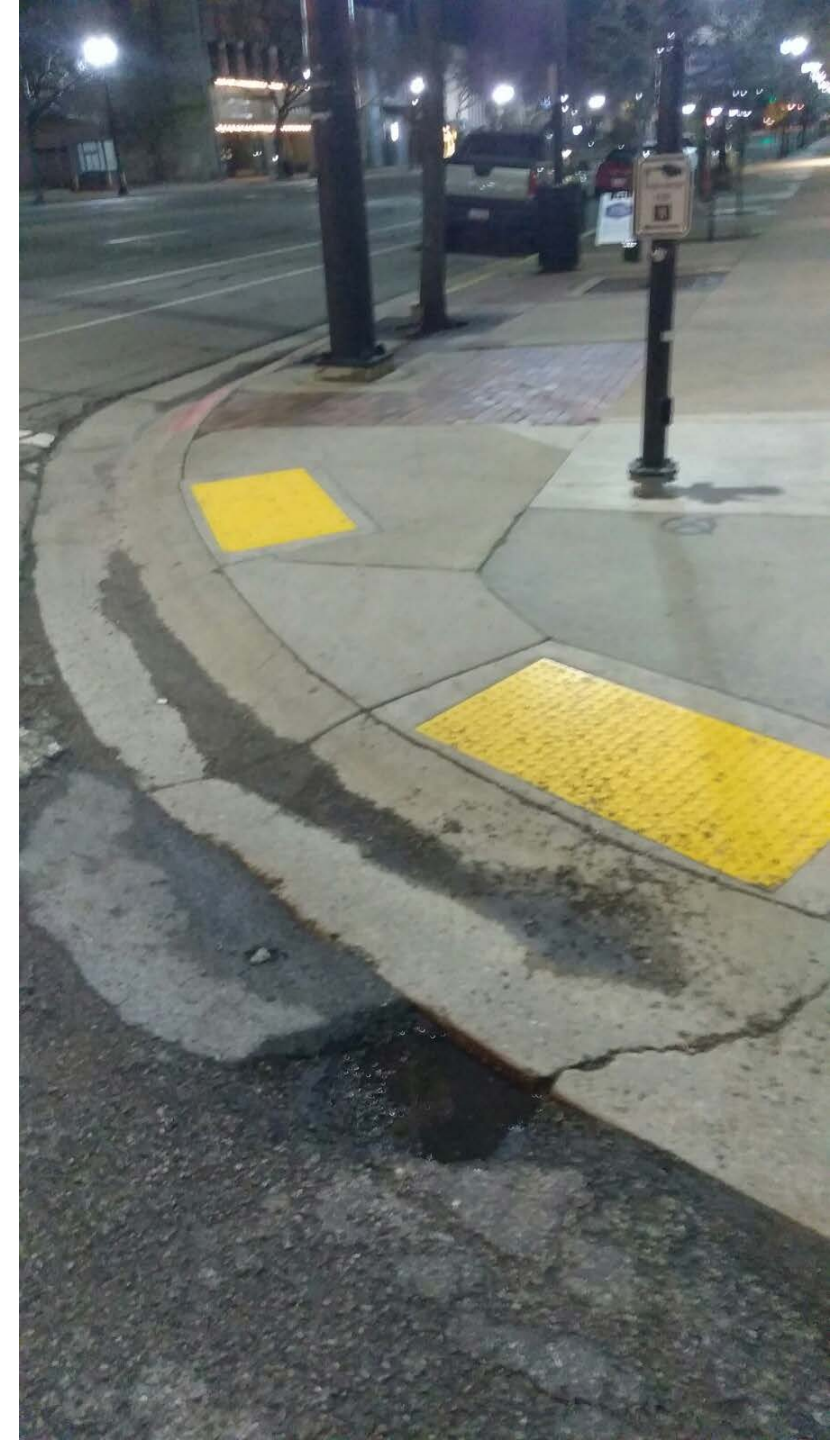


FOX 13
SALT LAKE CITY



**POLICE: 31 DISPATCHED CALLS WITH KEYWORD
LIME. 3 INCIDENT REPORTS - TRAFFIC ACCIDENT,
DAMAGED PROPERTY, CRIMINAL MISCHIEF.**

**RISK MANAGEMENT: 2 CALLS. INJURY AND KIDS
JUMPING CURBS.**





THE GOOD



LIME ADMIN TOOL FOR OGDEN

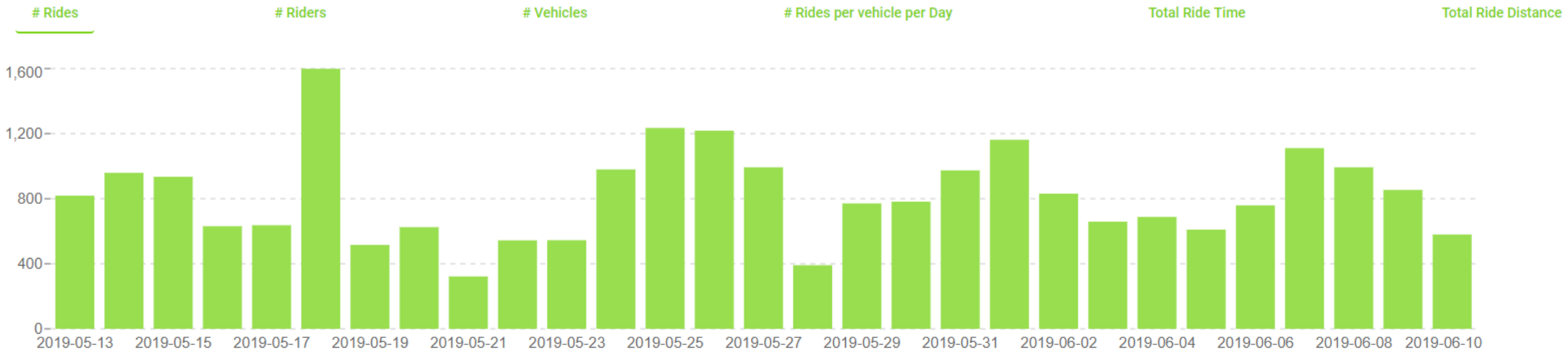
Cumulative Trips

Lifetime ▾

# Rides	# Riders	Total Distance	Total Time	Median Distance/Trip	Median Time/Trip
50,686	23,364	72,168.6 mi	1,123,978 min	0.9 mi	13 min

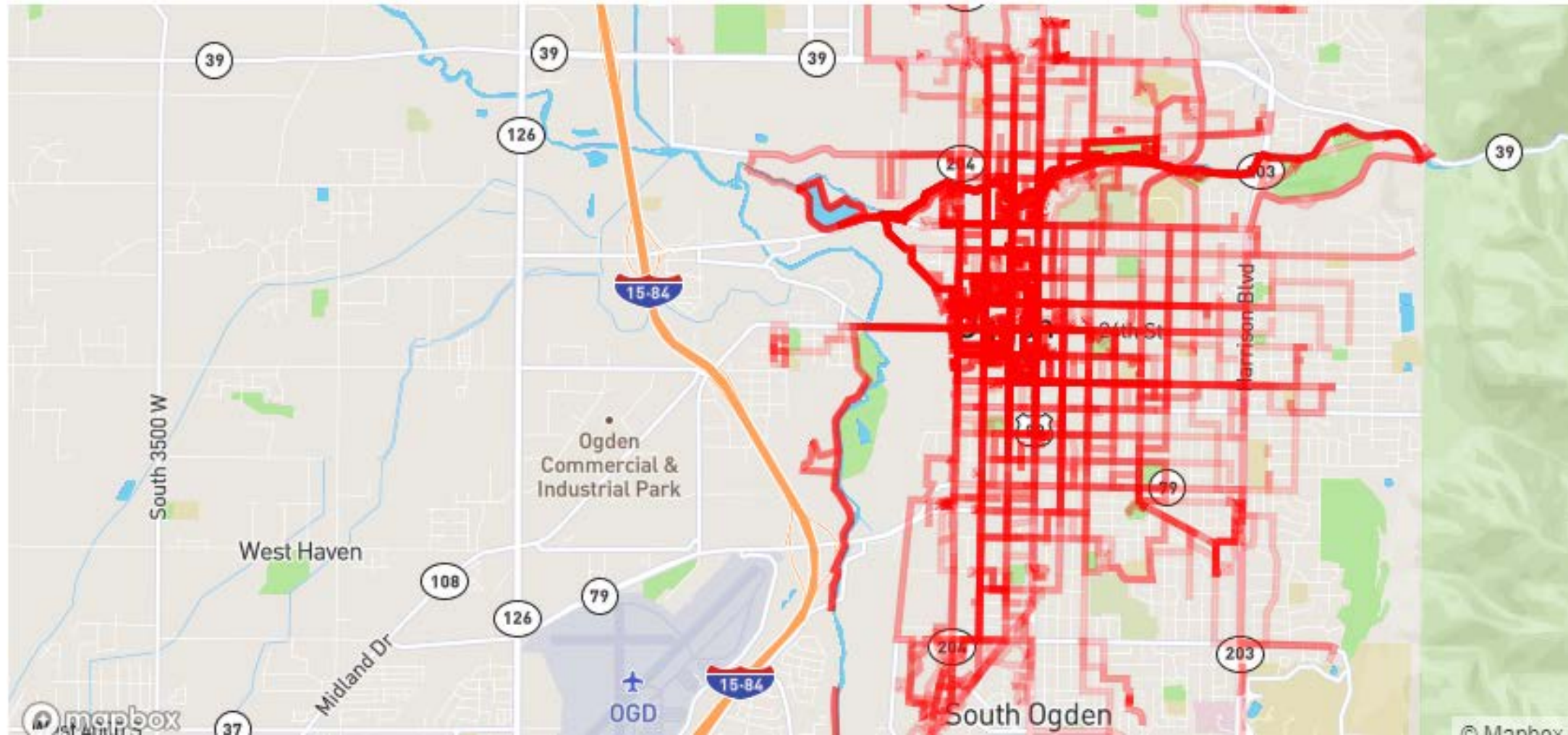
Trips Trends

Daily ▾



JUNE 10TH RIDE MAP

Ride Routes Yesterday ▾
(All Types of Vehicles)





QUESTIONS???



Micromobility Selection

Mayor Michelle Kaufusi

Austin Taylor, Parking and Sustainability

May 2019



Early Phase

- Exploration
 - Target market: visitors and students
- Pitches from various companies
- Internal discussion
 - Police
 - Public Works
 - Administration
 - Economic Development



RFP Design

- Review by internal committee
 - Police
 - Public Works
 - Administration
 - Economic Development
 - Legal
- UTA letter



Four Proposals



gotcha



Selection Criteria

- User training
- App ease of use
- Data collection
- Quality of bikes
- Quality of scooters
- Company reputability
- Low-income and/or student discount
- Non-smartphone payment method
- Marketing



Selection

The logo for SPIN, consisting of the word 'SPIN' in a bold, white, sans-serif font centered within a solid orange square.

Summary of Zagster Proposal



Experienced Micromobility Company

Ten year-old company operating in 200 communities and 40 states; closest in St. George.



Docked Bikeshare Experience

<http://bike.zagster.com/livewellstg/>



100 Bikes, 200 Scooters

One-year pilot at no cost to the city



Semi-docked System

Flexible solution that keeps clean right of way



Dockless Scooters

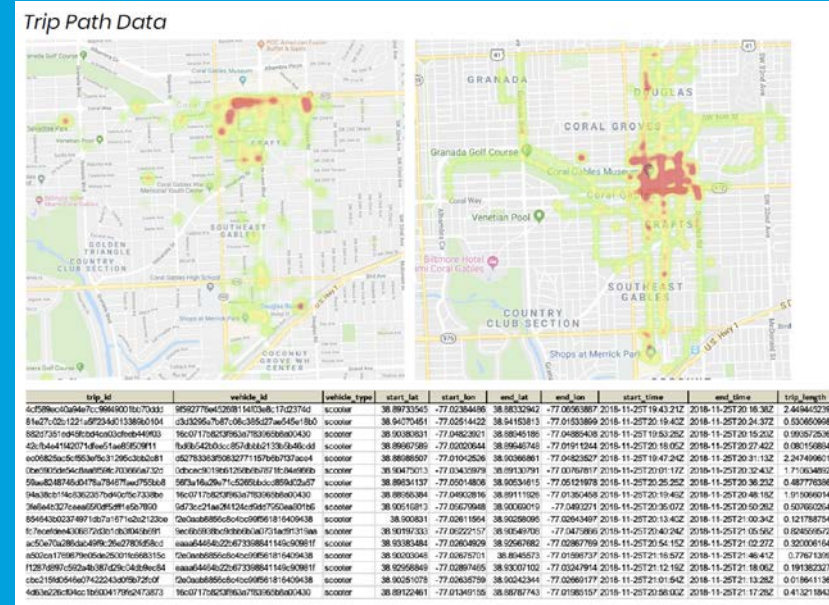
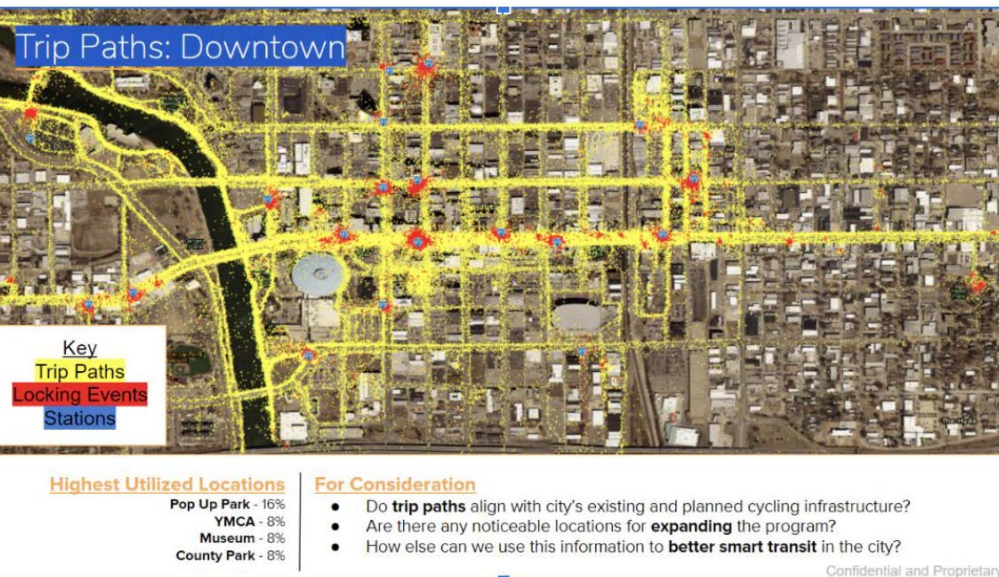
Highly accessible mobility



On-site Operations Team



Robust Data Collection



- Trip start time and location
- End time and location
- Paths
- Duration
- Rides per vehicle per day
- Parking rating tool per user
- Parking violation heat map
- Station utilization
- New users
- Repeat users
- And almost anything else the city requests



Affordable Rates

Mode	Fee Structure
Bikes	\$10/month \$60/year \$1 per 15 minutes Bulk employee memberships
Scooters	\$1 to unlock, \$.15 per minute afterward

50% discount to Provo residents at or below 200% of federal poverty guidelines



Concerns and Solutions



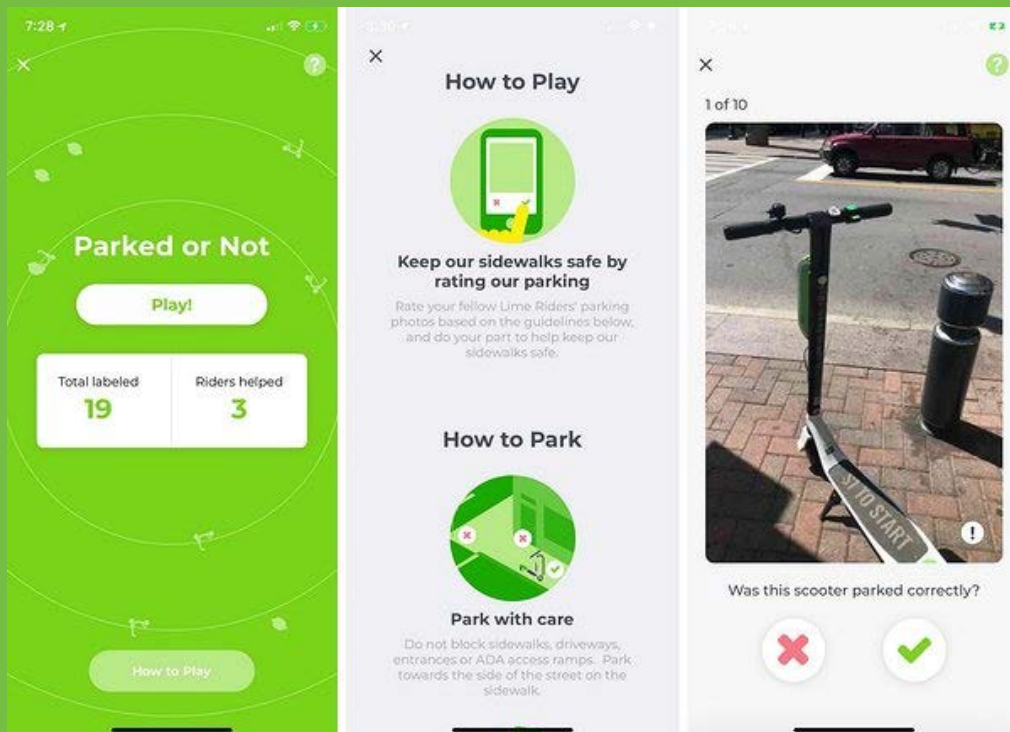
Parking

Bikes:

- Must start and end trip at a bikeshare station
- Must always be locked to a fixed object, preferably a bike rack
- \$50/vehicle fee will provide Provo City with enough money to install at least 200 new public bike racks



Parking

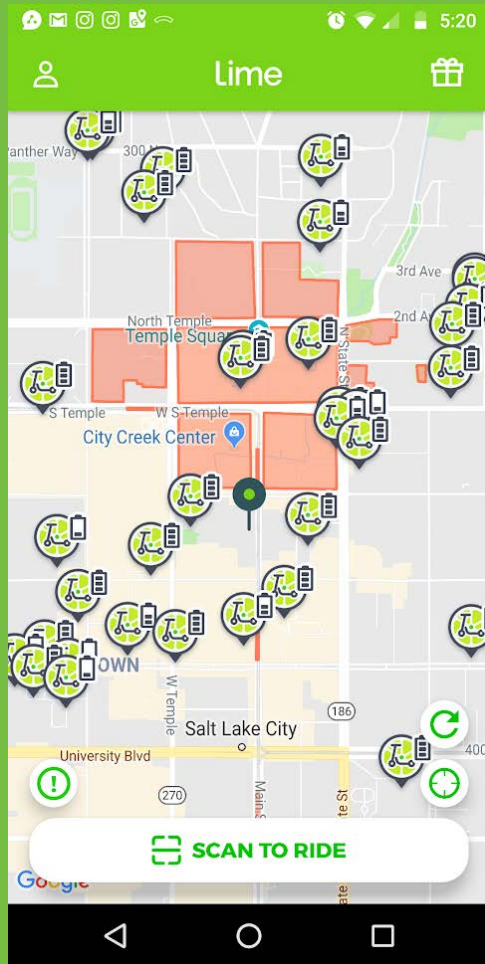


Scooters:

- Must be parked as to not obstruct the public right of way
- End ride with a photo of the parking job. Users who repeatedly park improperly are banned from system.
- Are gathered up every night and placed in key locations each morning by on-site team.
- "Shall be permitted at least one [parking] location on each side of each city block in commercial zones and business districts" (SB139)



Bad Riding Behavior



Scooters:

- May ride anywhere a bicycle is allowed to ride (SB139)
- Can be blocked from riding or parking in certain areas using geofencing
- Must not exceed 15 miles per hour (SB139)
- Must not be ridden by children under eight years old (SB139)
- Must not ride in parking garages (SB139)
- Must not “collide with a pedestrian” (SB139)





Theft

Registered users, GPS, nightly recovery, and smart design





GREENbike

SLC'S NON-PROFIT BIKE SHARE



SLC's GREENbike marks big milestone

POSTED 6:14 PM, APRIL 17, 2018, BY [MAX ROTH](#)



REAFFIRMING NON-PROFIT BRAND: THEMES

- Active
- Transit
- Reliable
- Community
- Safety
- Affordable



RECENT STATISTICS

- Averaged 2 rides per bike per day for 6+ years
- Sold more passes in 2018 than in 2017
- Each station averages 8,000 checkouts/returns a year
- <1% have ever rated our maintenance as poor



Title Sponsorship Renewal Update



Title Sponsorship Renewal Update

\$1,420,000 over 3-years

Original 3-year agreement in 2013-2016: \$250k

468% INCREASE!!!

Recent/Upcoming Events, Press, Products & Partnerships

Engagement Events in 2019

18 including:

- ✓ *Clear the Air Challenge*
 - ✓ *Living Traditions*
 - ✓ *Utah Arts Festival*
 - ✓ *Craft Lake City*
- ✓ *SLUG Alley Cat Race*
 - + *MANY MORE!!!*

Mayor's Bike to Work Day

The Salt Lake Tribune

A ride along the Jordan River helps Salt Lake City's mayor promote alternative transportation



(Francisco Kjolseth | The Salt Lake Tribune) Salt Lake City Mayor Jackie Biskupski, center back, is joined by Police Chief Mike Brown, members of the public and city employees on Thursday, May 16, 2019, as part of the annual Mayor's Bike to Work Day. This year's ride began at the Northwest Recreation Center and ran primarily along the Jordan River Trail in an effort to show off the investments the city and others have made to the trail.



Pride Festival

\$1.00 24 hr rides with kiosk code "6119"

We love you!!!!



 Simone Butler and 24 others



Farmers Market



Basket Bolt Event: July 20th, 2019

- **Station to station race/scavenger hunt**
- **Participants fill GREENbike baskets with clothing and hygiene items to be donated to the VOA Youth Resource center**
- **Goal: Promote VOA, safety & SLC's infrastructure**

GREENbike partnership nets new dollars for Utah museum

Deseret News

Published: February 15, 2018 2:07 pm



Leave a comment



GREENbike

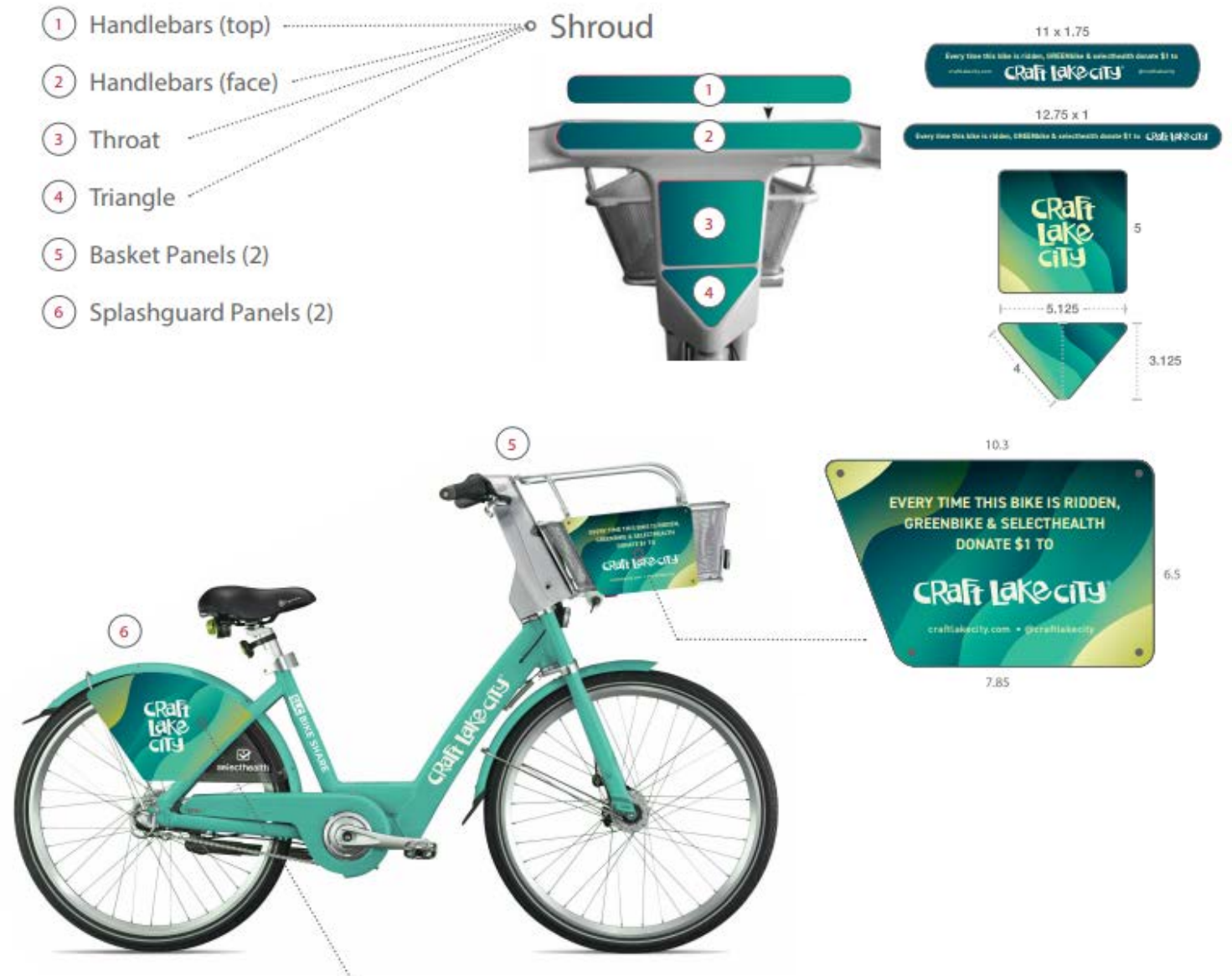
Each time a GREENbike rider chooses the cyan blue bike, GREENbike and SelectHealth donates \$1 to the Utah Museum of Contemporary Art. So far the museum has netted \$476.

New Community Bike: June 2019

Craft Lake City is a 3-day festival for **LOCAL** artists, scientists and engineers with over 300 exhibitors and approximately 20,000 attendees.

Throughout the year, Craft Lake City also provides a medium to promote **LOCAL** creatives via workshops, demonstrations and gallery shows.

Craft Lake City promotes and encourages regional and **LOCAL** spending to empower our community.



Craft Lake City Supports Local

Why We Believe in Local

Independent businesses bring substantial benefits to their local economies when compared to their chain competitors.

While chain stores and restaurants extract locally generated revenues from the community, independents create a virtuous cycle of local spending. The extra dollars in the local economy produce:



More jobs for
residents



Extra tax revenues
for local governments



More investment in
commercial and
residential districts



Enhanced support
for local nonprofits

Recent/Upcoming Press

- Salt Lake Tribune: April (City Council)
- Salt Lake City TV: May (Upcoming GREENbike Plans)
- 97.5FM Cultural Conversations: May (GREENbike in the Community)
- Salt Lake Tribune: May (Mayor's Bike to Work Day)
- Salt Lake Tribune: June (Traffic Congestion Reduction)
- TBD: June (SelectHealth Free Day / Renewed Support)
- Deseret News: June (What's New with GREENbike?)
- Salt Lake Magazine: July (Shared & Gig Econ. / How's GB Different?)

[HOME](#)[ABOUT ▾](#)[RATES / MEMBERSHIP ▾](#)[CONTACT](#)[STATION MAP](#)[IN THE NEWS](#)[BIKE SAFETY](#)[JOIN NOW](#)

GREENbike

SLC'S NON-PROFIT BIKE SHARE

[GREENbike Newsletter](#)[Login](#)[Forgot Password?](#)

October 2018

Residents Can Ride GREENbike for Free this Saturday: Deseret News - [View Now](#)

GREENbike Free Ride Day: ABC 4 Utah - [View Now](#)

GREENbikes are Free this Saturday: Salt Lake Magazine - [View Now](#)

GREENbike, UTA, SelectHealth and SLC Partner to Include the Bike Sharing in Hive One Pass: Cycling Utah - [View Now](#)

Hive Pass offers 1 more way to buzz along: Deseret News - [View Now](#)

UTA Hive Pass to Include Free Bike Sharing: Mass Transit Magazine - [View Now](#)

Hive and GREENbike Partnership Press Conference: SLC TV - [View Now](#)

GREENbike to be free for Hivepass holders: Building Salt Lake - [View Now](#)

September 2018

Program challenges people to ditch their cars for 30 days: Deseret News - [View Now](#)

Salt Lake City, Lyft, GREENbike, UTA challenge residents to 'Ditch your car' for 30 days: UtahPolicy.com - [View Now](#)

SLC residents asked to 'Ditch the Car' in exchange for hundreds of dollars in transit: Fox 13 - [View Now](#)

Program challenges people to ditch their cars for 30 days: KSL - [View Now](#)

Salt Lake City, Lyft, GREENbike, UTA challenge residents to 'Ditch Your Car' for 30 days: KUTV2 - [View Now](#)

Ditch Your Car Challenge Announcement: SLCTV - [View Now](#)

July 2018

GREENbike rolls out new station in Salt Lake City: Deseret News - [View Now](#)

SLC Bike Share Opens New GREENbike Station at Artspace: SLCTV - [View Now](#)

June 2018

GREENbike Free Ride Day is Saturday: Deseret News - [View Now](#)

GREENbike Free Ride Day is this Saturday: ABC 4 Utah - [View Now](#)

Salt Lake City's GREENbike is Free to Ride on June 23: Cycling Utah - [View Now](#)

May 2018

The 20 Best Things to do in Salt Lake City: Time Out - [View Now](#)

April 2018

SLC's GREENbike Marks Big Milestone: Fox 13 - [View Now](#)

GREENbike Program Celebrates 5 Years of Success: KSL - [View Now](#)

UCAIR and GREENbike Clean Air Partnership: SLCTV - [View Now](#)

February 2018



GREENbike program celebrates 5 years of success



By Amy, 2017/08/08/08:00:00 KSL | Posted Apr 17th, 2018 @ 8:00 AM



SLC's GREENbike marks big milestone

10/10/2018 11:45 AM APR 17, 2018, 8:00 AM KSL

[FACEBOOK](#)[TWITTER](#)[YOUTUBE](#)

Milestone for SLC's Green Bike program



Affordable Housing

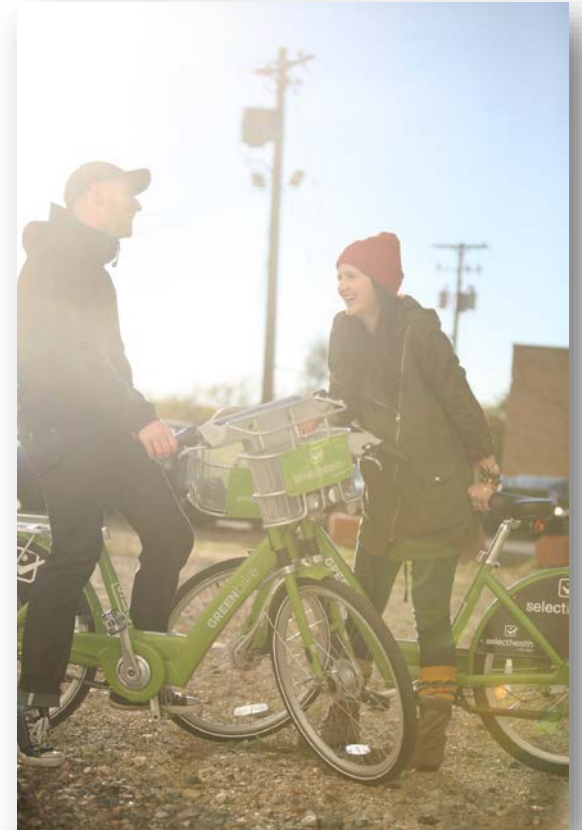


1. Artspace
 - Solar Gardens
 - Rubber Company
 - Bridges Project

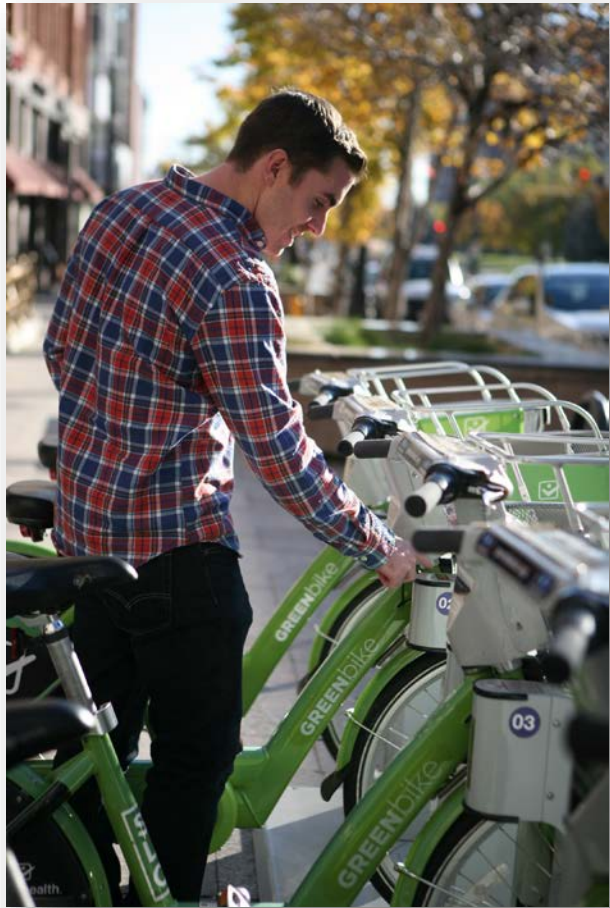
2. Giv Communities

3. Ecobox

4. Palmer Court



Equity Pass: September 2019



- \$5 for 1-Year
- Cash Option
- No Credit Card
- No Cell Phone



New Products



12-Hour Rides for Annual Members: **August 2019**



2019 Expansion

70% Expansion Including:

- Affordable Housing
- Workforce Housing
- Market Rate Apartments
- TRAX Stops
- + Expansions at N. Temple Frontrunner & SL Central
- Liberty Park
- 9th & 9th
- Salt Lake County Offices
- North Temple Corridor

E-Bikes: August 2019



2020 Expansion

- 500N 300W (Apartments & Library)
- 1300S 200W (Apartments, TRAX & Ball Park)
- 600W 50S (Apartments)

New Partnership:
Twilight Concert Series
(Sartain & Saunders)



SPONSORS

We would like to thank our generous sponsors for their support of the 2019 Twilight Concert Series



Other Recent Partnerships

- UTA Hive Pass
- Dominion Energy
- LDS Church
- Lyft
- Private Developers:
 - CW Urban
 - EcoBox
 - PEG Dev.
 - Clearwater
 - Giv Communitites

