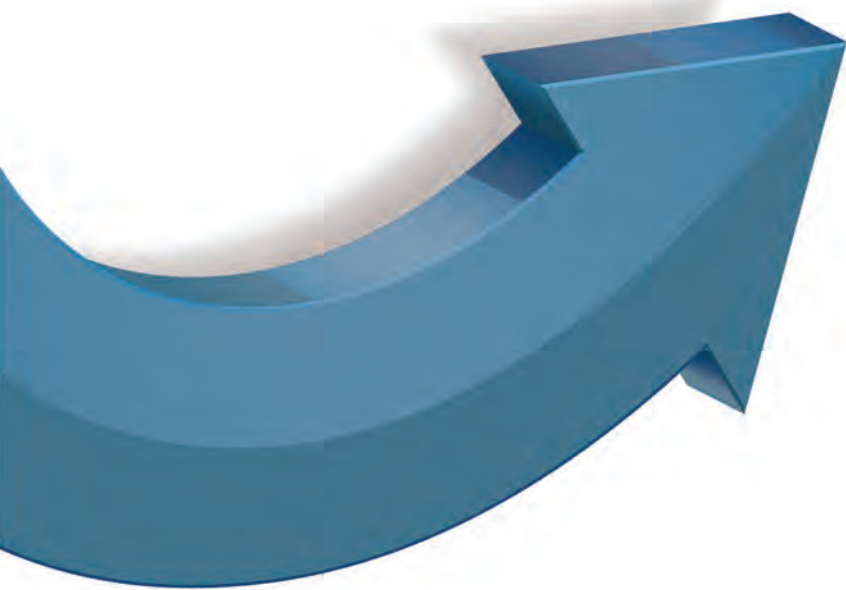


WASATCH CHOICE

— 2050 —

CONSORTIUM AND ACTIVE TRANSPORTATION & HEALTH SUMMIT

June 29, 2016 • Little America Hotel • Salt Lake City



GOLD SPONSORS & PARTNERS



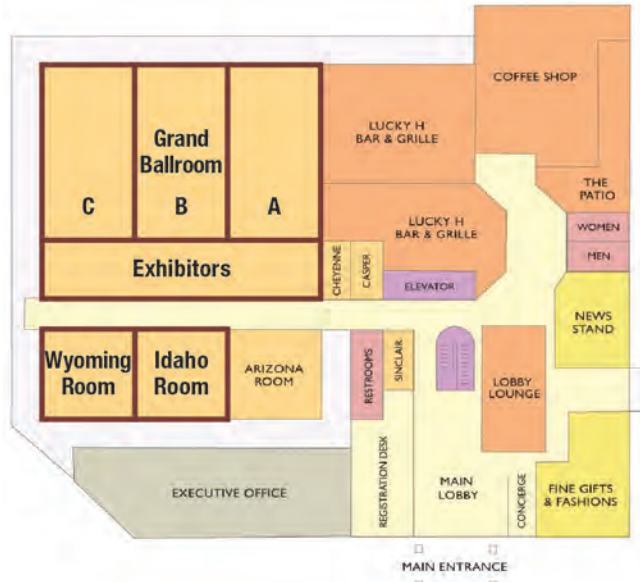
SILVER SPONSORS & PARTNERS



BRONZE SPONSORS & PARTNERS

EXHIBITORS

MAIN FLOOR



SECOND FLOOR



WI-FI ACCESS

User name: **LAET2**
 Password: **LAmerica**

CONSORTIUM WEBSITE



Scan the adjacent QR Code or visit wasatchchoice.com/consortium to view additional information, including the speakers' biographies.

SOCIAL MEDIA

Join the conversation on social media; use **#WC2050**.



Welcome

Welcome to the Wasatch Choice 2050 Consortium and Active Transportation & Health Summit. This is the largest group of consortium attendees to-date. Joining us today are community and business leaders, elected officials, planners, economists, developers, architects, engineers, contractors, academics, and many more.

This year, we have the privilege of coordinating our event with elected officials and staff from across the country who are here for the National Association of Regional Councils' 50th Annual Conference. These leaders have taken notice of the great things happening in our region and want to see how Utahns get things done.

Today we kick-off Wasatch Choice 2050.

Wasatch Choice 2050 represents the most significant update to the shared regional vision since Wasatch Front communities first established it over a decade ago.

Building on community values through an extensive public input process, Wasatch Choice established a blueprint for growth that supports a well-functioning economy, improves air quality, and enhances the overall quality of life for Utahns living across the Wasatch Front.

Wasatch Choice 2050 will update the regional vision looking out to 2050. It will better articulate how to make the vision a reality through recommended implementation strategies. It will reflect the dynamic changes happening in communities throughout the region, local efforts like Salt Lake County's *The Future We Choose*, and the *Your Utah, Your Future* statewide vision in which nearly 53,000 Utahns participated.

Community leaders, elected officials, policymakers, agency partners, industry groups, businesses, advocacy organizations, the public, and many others are invited to provide input into the development of Wasatch Choice 2050.

We must leverage the collaborative spirit for which Utahns are known to address the challenges of tomorrow by implementing forward-thinking solutions today. We appreciate your willingness to help shape the region's future through your continued involvement, dedication, and expertise.

Thank you for attending and we look forward to continuing to work together on these important issues.



Main Street, Salt Lake City

8:30 - 9:00	Registration and Networking			
9:00 - 9:15	Wasatch Choice 2050: Andrew Gruber, Executive Director, Wasatch Front Regional Council			
9:15 - 9:45	Breakfast	The Future We Choose: Ben McAdams, Mayor, Salt Lake County (.5CM)		
9:45 - 10:30	Keynote Speaker: Tyler Norris, Vice President, Total Health Partnerships, Kaiser Permanente (.75CM)			
10:30 - 10:45	Break			
10:45 - 11:45	Disruptive Technologies Part 1: Autonomous and Connected Vehicles (1CM)	Active Transportation for the Masses (1CM)	How to (Re)create the Walk-to-School Neighborhood (1CM)	Thinking Regionally, Implementing Locally: South Salt Lake's Streetcar District (1CM)
	Idaho Room	Olympus Room	Teton Room	Wyoming Room
11:45 - 12:00	Break			
12:00 - 12:45	Lunch	Your Utah Your Future Implementation: Robert Grow, CEO, Envision Utah (.75CM)		
12:45 - 1:15	Keynote Speaker: Spencer Cox, Lieutenant Governor, State of Utah (.5CM)			
1:15 - 1:30	Break			

OPTION 1	OPTION 1: BREAKOUT SESSIONS (Choose Option 1 OR Option 2)			
1:30 - 2:30	Disruptive Technologies Part 2: Land Use and Transportation in the Sharing Economy (1CM)	A Sidewalk Isn't Enough: Relearning How to Design for Three Miles Per Hour (1CM)	Is "Trail-Oriented Development" the Next TOD? (1CM)	
	Idaho Room	Olympus Room	Teton Room	
2:30 - 2:45	Break			
2:45 - 3:45	From Cars and Streets to Paths for Bikes and Feet (1CM)	Community Health Outcomes: What the Health Are We Talking About? (1CM)	The "Nature" of 2050 Visioning Workshop (1CM)	
	Idaho Room	Olympus Room	Grand Ballroom C	
3:45 - 4:00	Networking			

OPTION 2	OPTION 2: MOBILE TOURS (Choose Option 1 OR Option 2)			
1:30 - 4:00	To the Point! Exploring Utah's Tech Opportunities at the Point of the Mountain (Bus; 2CM)	Implementing Active Transportation in an Urban Environment (GREENbike; 2CM)	Implementing the Wasatch Choice Vision Mobile Tour (Walk, S-Line, and TRAX; 2CM)	
	Main Lobby	Wyoming Room	Mezzanine	

THEMES Transportation and Communities Active Living Environment Visioning

- Unless noted otherwise, all sessions will occur in the Grand Ballroom. •
- (#CM) signifies the number of AICP Certification Maintenance (CM) credits available. •



Wasatch Choice 2050

Wasatch Choice 2050 will provide a blueprint for how transportation, land use, and economic development can be shaped to improve the quality of life for residents along the Wasatch Front. It builds on the existing regional vision that is based on strong community values and developed through a robust public involvement process. With our population projected to nearly double by 2050, it is imperative that Utah's community leaders, policymakers, elected officials, public agencies, and the private sector come together to plan for the future. The challenges of tomorrow must be addressed by implementing forward-thinking solutions today.



PLENARY SPEAKER

Andrew Gruber
Executive Director
Wasatch Front Regional Council

Andrew Gruber is Executive Director of the Wasatch Front Regional Council. Andrew previously served as an attorney with the Chicago-based firm Mayer Brown, and as the Senior Deputy Executive Director for Legal and Governmental Affairs for the Chicago Regional Transportation Authority. He is a native of New York City, and a graduate of the University of Wisconsin-Madison and the Northwestern University School of Law.



The Future We Choose

Salt Lake County has developed a plan for building a healthy community. It is focused on specific outcomes, that, once achieved, will result in healthy people, healthy places, expanded opportunities, and responsive government. *The Future We Choose* will enhance our quality of life by encouraging job growth, increasing educational opportunities and fostering healthy families. We are dedicated to improving existing government functions that don't reflect the world in which we now live.



PLENARY SPEAKER

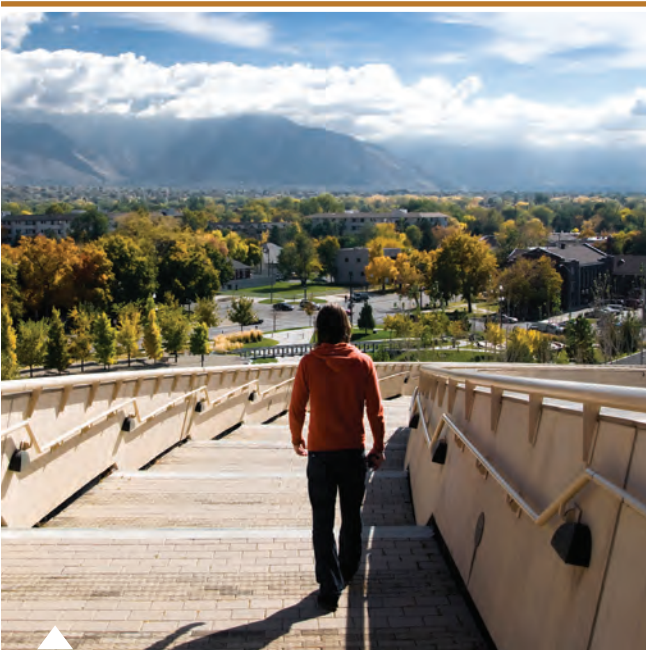
Ben McAdams
Mayor
Salt Lake County

Mayor Ben McAdams is a seventh generation Utahn, elected to serve as Salt Lake County mayor in 2012. He was supported by a broad cross-section of local mayors, as well as community and business leaders. He has governed as a fiscally-responsible, bipartisan, common sense leader who gets things done on behalf of the county's 1.1 million residents. Ben graduated from the University of Utah and Columbia Law School. He has practiced law in New York and Utah. In 2008, Ben was elected to the Utah State Senate and represented Salt Lake, South Salt Lake, and West Valley cities.



Improving Health Through Community Design and Development

Your zip code can be more predictive of your health status than your genetic code. The way communities are designed and developed, and whether they provide affordable health access, has a direct impact on population health outcomes and the total cost of health care. Increasing physical activity rates, assuring access to healthy nutrition, and addressing stress and social connection are vital to helping to prevent the 'big-four' killers – cardiovascular disease, diabetes, some cancers, and chronic respiratory disease. These chronic diseases are the leading drivers of premature death, and fast-increasing health care costs. In combination with access to clinical care, it is vital that community design and development support healthy behavior choices where people live, work, learn, and play. A collaborative partnership must exist between the private, public, and non-profit sectors to help ensure that people make healthier choices.



Pedestrian at the Salt Lake City Library; photo courtesy of Christine Mahler via Flickr.



KEYNOTE SPEAKER

Tyler Norris

Vice President, Total Health Partnerships Kaiser Permanente

Tyler Norris, MDiv, is an entrepreneur and founder of over a dozen businesses and social ventures. His service in the public, private and non-profit sectors have focused on population health, community vitality, and equitable prosperity. Currently, he serves as Vice President of Total Health Partnerships at Kaiser Permanente (KP), where he leads “anchor institution” strategies, applying all KP assets to measurably improve population health and community well-being.

Tyler is a trustee of Naropa University, and serves on advisory bodies for the Convergence Partnership, Transportation for America, Active Living by Design, and Samueli Institute. He is active with Social Venture Network, BALLE and SOCAP. As an early leader in the healthy/sustainable communities movement, Tyler has worked in over 400 communities and with scores of organizations in the US and globally. Previously he was Chair of IP3, which powers www.CommunityCommons.org and other GIS platforms; CEO of Community Initiatives Inc.; and Chair of the Kellogg Foundation’s Leadership Alliance. He is an avid mountain biker, skier and pilot – now residing in Oakland, CA.



Your Utah, Your Future Implementation

How we grow matters. With Utah's population projected to nearly double by 2050, we need to work together to ensure we maintain the quality of life we have all come to enjoy. Envision Utah's *Your Utah, Your Future* effort was a success – 400 Utah experts and more than 50,000 Utahns weighed in on what they want the future to be like during the largest-ever public engagement campaign of its kind. Utahns spoke loud and clear. They want a Utah that is safe, resilient, prosperous, neighborly, fair, healthy, and beautiful. It's a tall order, but there's a clear path to make that vision reality.



PLENARY SPEAKER

Robert J. Grow, JD
 CEO
 Envision Utah

Robert Grow holds degrees in engineering and law from the University of Utah and the J. Reuben Clark Law School at Brigham Young University, and has had a diverse career, including practicing law, leading and supporting regional visioning processes, being president of a large manufacturing company, and chairing a national trade association. Grow was the primary architect of Envision Utah's grass roots, bottom up, stakeholder driven, and values based approach. He is the founding chair emeritus and current President and CEO of Envision Utah.



A Vision for a Healthier Utah

Your Utah, Your Future is a great representation of how we do business in our state. We can achieve better health outcomes by planning for the future and taking action today. Facilitating the implementation of community features like trails, bike lanes, and sidewalks can help get people out of their cars and using their feet. Running, jogging, or walking for recreation, commuting, or to just get around will provide a direct benefit to our lives and perhaps even our waistlines.



KEYNOTE SPEAKER

Spencer Cox
 Lieutenant Governor
 State of Utah

As Lieutenant Governor, Spencer Cox serves as the chief election officer, liaison between the governor and the state legislature, and serves on 30 committees and commissions, chairing 12 of them.

Spencer was born and raised in the town of Fairview, Utah. He and his wife Abby both come from large families, and were raised on farms in Sanpete County, where they learned the value of hard work and collaboration. Spencer and Abby are the parents of four children between the ages of 9 and 17: Gavin, Kaleb, Adam, and Emma Kate.



Disruptive Technologies Part 1: Autonomous and Connected Vehicles

As we plan for the future of our region and its communities, we need to understand the shape of the trends and forces that will come to the forefront. Recent events in technology have led many to believe that the future may look much different. In this first session regarding the possible effect of disruptive technologies, we will take a look at mobility and transportation, such as ride sharing and autonomous vehicles, and how they may affect the future of urban transportation. Transportation systems are considered to be the backbone on which our regional form is based, and ultimately dramatic changes in these systems will have profound effects on our future, regional, urban form.



JEFF HARRIS

Planning Director
Utah Department of Transportation



BLAINE LEONARD, PE

Intelligent Transportation
Systems Program Manager
Utah Department of Transportation



Google autonomous vehicle; photo courtesy of Roman Boed via Flickr.



Active Transportation for the Masses

This plenary session will feature representatives from the Utah Department of Transportation, the Utah Transit Authority, the Mountainland Association of Governments, the Wasatch Front Regional Council, Salt Lake City Transportation, and Bike Utah. This discussion panel gathers viewpoints from state government, MPOs, local government, and an advocacy organization to discuss the importance of collaboration in planning and implementing active transportation infrastructure. Panelists will discuss challenges, lessons learned, and strategies moving forward, as well as a multi-faceted approach that can be taken toward planning for active transportation.



HEIDI GOEDHART

Active Transportation Manager
Utah Department of Transportation



SCOTT HESS

Active Transportation Planner
Wasatch Front Regional Council



JENNIFER MCGRATH

Active Transportation Planner
Utah Transit Authority



JIM PRICE

Bicycle/Pedestrian Program Mgr.
Mountainland Association of
Governments



COLIN QUINN-HURST

Transportation Planner I
Salt Lake City Division of
Transportation



PHIL SARNOFF

Executive Director
Bike Utah

Biographies may be found at wasatchchoice.com/consortium.



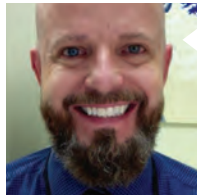
How to (Re)create the Walk-to-School Neighborhood

Traditionally, schools have been woven into the fabric of our neighborhoods, enabling kids to easily and safely walk-to-school. Today, we often fall short of this outcome. What are the best practices being utilized in Utah to achieve the walk-to-school? We'll hear various perspectives from the school district, local planner, and developer. We'll discuss siting, site design, and street and trail connections to schools, as well as the quality and safety of the walking routes. We'll also highlight how the planner, developer, and school district can collaborate to (re)create the walk-to-school.



PAUL BERGERA

Jordan School District



LANCE EVERILL

Facility Staff Assistant of Operations
Jordan School District



GREG HAWS

Senior Project Manager
Psomas



TED KNOWLTON, AICP

Deputy Director
Wasatch Front Regional Council



KIM STRUTHERS, AICP

Planning Director
Lehi City



Thinking Regionally, Implementing Locally: South Salt Lake's Streetcar District

Launched two years ago as a joint partnership between Salt Lake County and the Wasatch Front Regional Council, the Transportation and Land Use Connection program's main objective is to provide technical assistance, including staff time, consulting, and training to local communities for planning, implementation, and visioning efforts that proactively address anticipated growth. In July of 2014, South Salt Lake City received a grant to update its zoning ordinance along the East Streetcar S-Line district. At present, over 600 units are allowed in the East Streetcar Zone (Ritz: 278 units; Zellerbach: 287 units; S-Line Townhomes: 32 units), in addition to a grocery store west of State Street (Boyer). The area is poised to be a new, vibrant, and walkable neighborhood. Presenters will address the City's approach to how this work was implemented and also provide the developers' perspective to how well the form based code ordinance met the existing market demands. City staff will highlight the process for the planning and ordinance work, as well as the development of the 10-block area along the S-Line corridor (from State Street to 500 East).



JULIA COLLINS

Program Manager
Wasatch Front Regional Council



JUSTIN EARL

Director of Acquisitions and Development
ICO Development



FRANCIS XAVIER LILLY, AICP

Housing Administrator/
Deputy Director of Community Development
South Salt Lake



Disruptive Technologies Part 2: Land Use and Transportation in the Sharing Economy

In the second of our two sessions regarding disruptive technologies, we will look at other recent trends and speculate a bit on how they may affect our future, regional, urban character. Examples such as the effect of rideshare on transit, shared lodging (Airbnb or Vacation Rental by Owner), smaller or more transient housing (tiny homes, accessory dwelling units, or short term rentals), work that can be done from anywhere with a laptop and Wi-Fi, the trend toward on-line retail, and others will surely affect the way our communities look and feel in the future.



ALI OLIVER

Strategic Planner
Utah Transit Authority



WILF SOMMERKORN

Director of Regional Planning and Transportation
Salt Lake County



Employee working remotely; photo courtesy of David Goehring via Flickr.



A Sidewalk Isn't Enough: Relearning How to Design for Three Miles Per Hour

People are drawn to streets that are designed for walking, and repelled by streets that are not. However, it is often difficult to explain why a street works or doesn't work for walking. Additionally, identifying needed improvements can be an elusive problem. This session will reveal what encourages people to walk along streets. We will describe a new methodology to measure walkability, show off a local application where more than 1,200 blocks were scored, and discuss practical ways to make our streets safe and attractive for walking again.



LAURA CLAYTON

Architect, Sustainability
Coordinator
Babcock Design



REID EWING

Professor, Director
Metropolitan Research Center
University of Utah



JON LARSEN

Modeling, Forecasting, and
Information Services Manager
Wasatch Front Regional Council



CALLIE NEW

Transportation Planner
Wasatch Front Regional Council

Biographies may be found at wasatchchoice.com/consortium.



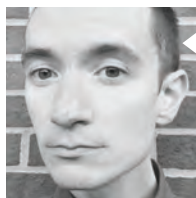
Is “Trail-Oriented Development” the Next TOD?

Across the nation, high quality urban trails have been created and ultimately invited significant urban revitalization. How can we acknowledge and unlock this potential in Utah as we develop great urban trails? This session will explore national case studies of developers enhancing active transportation infrastructure and, in-turn, maximizing real-estate benefits to help revitalize our communities. National speakers from New Jersey and Indiana will join our local experts.



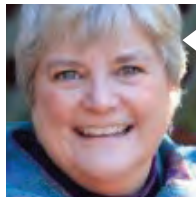
ALEXANDER GRGURICH

Development Analyst
Nelson Construction and Development



MATT NORRIS

Senior Associate
Urban Land Institute



NORAH SHEPARD

Planning Director
Salt Lake City



Urban trail in Sugar House; photo courtesy of Eric Vance, Digital Media Specialist, Utah Transit Authority.



From Cars and Streets to Paths for Bikes and Feet

This session will discuss the challenges and benefits of shifting the transportation paradigm in our communities. Three cities will share their process of changing the transportation paradigm in their cities. They will discuss some of the challenges associated with change, how they have and continue to overcome these challenges, and the benefits of making the change within their communities.



JUSTIN ANDERSON

City Engineer
Ogden City



BILL APPLGARTH

Mayor
Riverton City



CAMERON DIEHL

Director of Government Relations
Utah League of Cities and Towns



DAVE MILLHEIM

City Manager
Farmington City

Biographies may be found at wasatchchoice.com/consortium.



Community Health Outcomes: What the Health Are We Talking About?

A community is only as healthy as the people who live there. Even if a community has an ideal plan, it means nothing if it doesn't improve the health outcomes of its residents. This session will demonstrate the health data that is available at the state, county, and city levels. Local public health practitioners will share how this data is used to bridge the gap between community design and optimal health. If you are looking for information about how you can work better with your public health departments, this session will help you figure out why the health we do what we do.



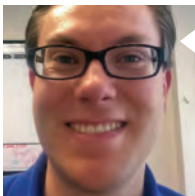
KIM CLAUSING

Health Educator
Tooele County Public Health
Department



BRETT MCIFF

Physical Activity Coordinator
Utah Department of Health



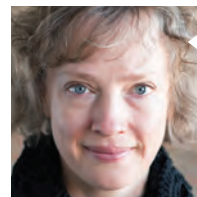
TRAVIS OLSEN

Health Educator
Weber-Morgan Health
Department



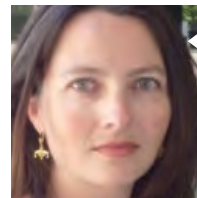
The "Nature" of 2050 Visioning Workshop

As the Wasatch Front grows, what legacy of natural space and park land will we have to enjoy? Come develop answers to this question through an interactive, small group workshop. Map out your ideas and convey your key priorities for recreation, agricultural land, and land that improves our environment. Results will be shared with cities and counties through the new Wasatch Choice 2050 Vision. This workshop is a chance to think big about the legacy we will leave.



BETSY BYRNE, MLA

Lead Planner
Envision Utah



SARAH JACK HINNERS

Acting Director
Ecological Planning Center
City and Metropolitan Planning
University of Utah



CHRISTIE OOSTEMA

Principal
People + Place



Multi-use trail in Daybreak; photo courtesy of Wasatch Front Form Based Code via Flickr.



To the Point! Exploring Utah's Tech Opportunities at the Point of the Mountain (Bus)

Join us on a mobile tour to learn why more than 4,300 high-tech companies call Utah home. Hear from Utah's leaders, including planners, developers, and entrepreneurs, about what makes Utah so attractive. A UTA motor coach will drive attendees from the Little America Hotel to Lehi City in Utah County. Participants will be joined by key staff from the Governor's Office of Economic Development and the Economic Development Corporation of Utah, who will share information about what makes Utah's technology ecosystem boom. We will take a five-minute break at the Lehi City Hall before embarking on a tour of the City's numerous technology companies, led by Lehi's economic development director. Attendees will hop off the bus at Adobe where they will learn first-hand what makes Utah so attractive from Adobe's regional site operations manager's perspective. On the way back to Little America Hotel, participants will learn about future opportunities in and around Utah's Point of the Mountain from one of Utah's visionary leaders from Envision Utah.



Adobe headquarters in Lehi City; photo courtesy of City Home Collective via Flickr.



RYAN BECK

Senior Planner
Envision Utah



LANIECE DAVENPORT

Director, Wasatch Front Economic Development District
Wasatch Front Regional Council



ROBERT J. GROW, JD

CEO
Envision Utah



BENJAMIN HART

Managing Director of Urban and Rural Business Services
Utah's Governor's Office of Economic Development



ERIN LANEY

Director of Business Development
Economic Development Corporation of Utah



JEREMY MACDONALD

Regional Site Operations Manager
Adobe



DOUG MELDRUM

Economic Development Director
Lehi City



Implementing Active Transportation in an Urban Environment (GREENbike)

Explore Salt Lake City while peddling on one of the City's popular GREENbikes! Learn about the innovative approaches city planners have taken to implement active transportation infrastructure in an urban environment. You will be joined by city and transportation agency staff who will explain the projects you will experience first-hand. Come learn about best practices for your own community. Comfortable, breathable clothing and helmets are recommended.



Businessman uses GREENbike in Salt Lake City; photo courtesy of GREENbike.



DAN BERGENTHAL

Engineer VII
Salt Lake City Division of Transportation



BEN BOLTE

Founder and Director
GREENbike



JENNIFER MCGRATH

Active Transportation Planner
Utah Transit Authority



BLAKE PEREZ

Special Projects Analyst
Salt Lake City Division of Transportation



COLIN QUINN-HURST

Transportation Planner I
Salt Lake City Division of Transportation



JACOB SPLAN

Engineering and Construction
Planner
Utah Transit Authority



JOE TAYLOR

Graphics and GIS Specialist
Utah Transit Authority

Biographies may be found at wasatchchoice.com/consortium.



Implementing the Wasatch Choice Vision Mobile Tour (Walk, S-Line, and TRAX)

Join us for a fun and informative look at recent and ongoing redevelopment along our new streetcar line and active transportation “greenway,” as well as a key, future redevelopment area in close proximity. Hear from experts in transportation, municipal redevelopment, landscape architecture/design, and planning who will discuss how the streetcar/greenway project came together; how it influenced past and current development in an eclectic and desirable area of Salt Lake City (Sugar House); and how our regional planning program, Transportation Land Use Connection, is assisting another city in their efforts to create similar investment and development in neighboring South Salt Lake. This tour will begin on the regional transit system, and offer participants the chance to ride both light rail and streetcar lines. A large portion of this tour will include walking along sidewalks and a grade separated, mixed-use path. Be sure to wear comfortable and breathable clothing, as well as appropriate footwear. Also, please consider bringing a hat, sunglasses, and sunscreen.



S-Line and adjacent greenway; photo courtesy of Eric Vance, Digital Media Specialist, Utah Transit Authority.



BEN DAVIS

Project Manager
Redevelopment Agency
Salt Lake City



LEVI ROBERTS

Strategic Planner
Utah Transit Authority



JULIANNE SABULA

Transit Program Manager
Salt Lake City



MEGAN TOWNSEND

Transportation Planner
Wasatch Front Regional Council



BRYCE WARD, ASLA, MPA

Urban Designer/Planner
GSBS



FRANCIS XAVIER LILLY, AICP

Housing Administrator/
Deputy Director of Community
Development
South Salt Lake

Biographies may be found at wasatchchoice.com/consortium.



Connecting communities.

UTA  rideuta.com

SL SALT LAKE
COUNTY
REGIONAL DEVELOPMENT

WORKING TOWARD CREATING
**A SAFE & CONNECTED BICYCLE
NETWORK THROUGHOUT THE VALLEY**



Salt Lake County Active Transportation
www.slco.org/bikes | [#slcobikes](https://twitter.com/slco_bikes)



Your solutions partner
for quality products and services.



Connect with us   | Oldcastle.com

Allied Building Products

801-261-8888
AlliedBuilding.com
Roofing, & Exterior Finishes

Amcor

801-936-7628
AmcorMasonry.com
Masonry, Pavers & Retaining Walls

AMS

801-265-0500
A-M-S.com
Drywall & Interior Finishes

Burdick Materials*

435-722-5013
BurdickPaving.com

Hales Sand & Gravel*

435-529-7434
WesternRock.com

Interstate Roofing

801-373-5650
InterstateRoofingSupply.com
Roofing & Exterior Products

Jack B. Parson Companies*

1-800-CONCRETE
JBParson.com

Nielson Construction*

435-687-2494
NielsonConstruction.com

Oldcastle BuildingEnvelope

800-776-4442
OldCastleBe.com
Glazing Systems

Oldcastle Precast

801-936-0800
OldcastlePrecast.com
Precast Concrete Products

Reynolds Excavation*

801-566-2110
ReynoldsBrothers.com
Site Work, Excavation,
Utilities & Demolition

Staker Parson*

801-731-1111
StakerParson.com

Western Rock*

435-628-4384
WesternRock.com

**Sand, Rock, Landscape Products,
Ready-mixed Concrete, Asphalt,
Paving & Construction Services.*

Zions Bank is a proud sponsor of the
Wasatch Choice 2050 Consortium



ZIONS BANK | WE HAVEN'T FORGOTTEN
WHO KEEPS US IN BUSINESS®

A division of ZB, N.A. Member FDIC



*Making the
Healthy Choice
the Easy Choice ...
For Everyone*

www.choosehealth.utah.gov



The Wasatch Choice partnership developed the **Wasatch Choice Toolbox** to help communities more easily and effectively strategize and implement their plans. Applying the resources found in the toolbox will help communities explore the Vision and Growth Principles with residents and enact locally-driven plans according to their individual goals and aspirations. The following planning tools have been developed to assist in this effort. For more information, visit wasatchchoice.com/wasatch-choice-toolbox.



ENVISIONING CENTERS

Synthesizes the use of the Wasatch Choice tools and establishes a guided process for smaller communities to plan, using a thorough scenario planning process.



ENVISION TOMORROW PLUS (ET+)

Allows the user to see and compare the outcomes and impacts of potential policy and development decisions in terms of multiple economic, demographic, and environmental indicators.



FORM BASED CODE TEMPLATE

Offers a customizable template code for communities who wish to modify their local codes and establish a form based code ordinance.



HOUSING & OPPORTUNITY ASSESSMENT

Provides current information regarding demographics, socio-economics, and housing to help cities understand the impediments to and opportunities for housing equity.



IMPLEMENTING CENTERS

Helps communities to assess barriers to development of higher-density, mixed-use centers, as well as develop strategies to overcome these barriers.



COMPLETE STREETS

Delivers an interactive approach to ensure that all users are considered with each street investment by visualizing, comparing, and modifying street alternatives and influence more informed decisions.

SHAPING URBAN FUTURES

Communities across America face a wide range of planning challenges, including population growth, changing demographics, outdated infrastructure and rising energy demand.

WSP | Parsons Brinckerhoff turns these challenges into opportunities with a future-ready approach to community development that enhances the livability and sustainability of urban environments.

Contact us today to reshape your community.



Providing leadership in the responsible use of land and in creating and sustaining thriving communities.

Save the date

ULI UTAH'S ANNUAL TRENDS CONFERENCE

November 10, 2016

7:30 am - 5 pm

Park City Marriott

Watch for more details soon



For information about membership, events and more visit utah.uli.org



For career opportunities visit wsp-pb.com/usa

For the latest news visit: insights.wsp-pb.com



CONCRETE PAVING THAT'S MADE TO LAST



Your job is stressful enough. You shouldn't have to worry about your concrete paving. With Geneva Rock, you can rest assured that you are getting the highest quality paving at the best possible value. That means that no matter the stress your project will endure, you'll be worry-free. And if there is a problem, we'll make it right. Our word is our bond.

(801) 765-7800 • 1565 West 400 North, Orem Utah 84057 • www.genevarock.com



UTAH HOSPITAL ASSOCIATION

The trusted voice of healthcare

www.UtahHospitals.org



Creating a culture of health through encouraging and facilitating active lifestyles and healthy eating

www.GetHealthyUtah.org

Home Ownership Matters

SALT LAKE BOARD OF REALTORS®



To the Economy... To People... To Utah.

Studies show home ownership increases personal net worth, educational achievement, fosters strong neighborhoods, and the overall quality of life.

That's why Realtors® champion private property rights and promote a variety of housing types.

Everyone benefits.



Setting the Standard for City Centers

Live, Work, Play...Repeat



The Prestige
High rise residential



The Park at City Center
Upscale apartment community



Hale Centre Theatre
State-of-the-art dual-stage theatre



Townridge Office Park
New 250,000 sq ft Class A office development



THE CAIRNS

WHERE MOUNTAIN MEETS URBAN
Twenty Million Square Feet of Development

- World Class Skiing
- Year round Mountain Recreation
- Impressive Trail System
- Multi-million Dollar Mall Renovation
- Unsurpassed Shopping, Dining and Entertainment Experiences

PENNA POWERS

801.487.4800

HEAR
AND BE
HEARD

Our Public Involvement team fosters conversations between you and the public you serve.

LET'S START A CONVERSATION

PennaPowers.com



- Introducing the -

Kem C. Gardner POLICY INSTITUTE

at the newly restored Wall Mansion.

Demographics | Economics | Survey Research
Public Policy | Leadership and Training

Helping community leaders in Utah make
INFORMED DECISIONS™

411 East South Temple | Salt Lake City, Utah 84103 | Gardner.utah.edu

An initiative of the David Eccles School of Business

SLC Moves

SALT LAKE CITY TRANSPORTATION DIVISION
Employer of the Year - WTS 2016



Providing travel choices, improving safety, and enhancing accessibility for Salt Lake City residents, visitors, and employees.

Proud sponsor of the 2016
Wasatch Choice 2050 Consortium

/SLCMoves

@SLCMoves

YOU CAN WIN THE ADVENTURE'S FIRST STOP MAVERIK TRUCK & ATV

Presented by Young



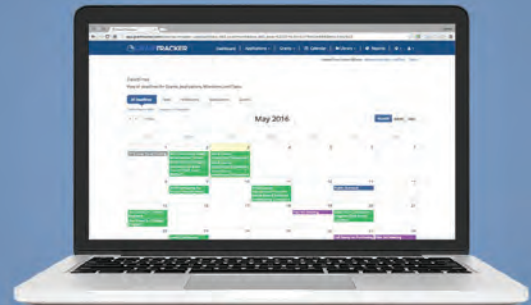
ADVENTURE'S FIRST STOP
MAVERIK
DETAILS AT MAVERIK.COM



GRANTTRACKER

Powered By EFFICIENTGOV

THE ULTIMATE GRANTS MANAGEMENT TOOL



The most **efficient** and **cost-effective**
grants management platform in the market

Schedule Demo

www.GrantTracker.com



TPCB

Transportation Planning Capacity Building Program



Technical Assistance, Information, Training and Research

An Informational Resource for Effective Transportation Planning

Jointly sponsored by:



U.S. Department of Transportation
Federal Highway Administration
Federal Transit Administration

www.planning.dot.gov



COUNTING PEOPLE, ANALYZING DATA

Leader
in pedestrian and cyclist monitoring

Effective Tools
to Measure Active
Transportation



Contact us today to discuss your bike and pedestrian data collection needs:
1 866 518 4404 - sales@eco-counter.com

www.eco-counter.com

New Federal Transit Administration resources available at transit.dot.gov

The Statewide and Nonmetropolitan Transportation Planning / Metropolitan Transportation Planning Final Rule

- provides the framework for implementing performance-based planning
- maintains emphasis on the metropolitan planning process to establish regional priorities
- greater emphasis on rural and non-metropolitan planning involvement in statewide planning

Rides to Wellness initiative

- fostering partnerships between health & transportation providers to increase access to care, reduce health care costs & improve health outcomes

Simplified Trips on Projects Software (STOPS)

- a tool to estimate ridership changes resulting from transit system improvements and service changes
- useful to MPOs and transit agencies of all sizes & capabilities



FTA grants supported construction, operation of Utah Transit Authority's TRAX light rail.

"FTA supports the National Association of Regional Councils and will continue our mutual efforts to improve the important task of transportation planning."
– Carolyn Flowers, FTA Acting Administrator



U.S. Department of Transportation
Federal Transit Administration

Learn more about these and other funding opportunities and guidance at transit.dot.gov



WASATCH CHOICE

2050

wasatchchoice.com/consortium