

Riverton City

Meeting Our City's Growing Transportation Needs



Mayor Bill Applegarth
June 29, 2016

Our Vision



- Improve residents' quality-of-life and promote bicycling and walking in a safe, convenient, and comfortable network for transportation and recreation
- Plan and implement a safe network of bicycling and walking facilities that serve a variety of users
- Develop a strong bicycling and walking infrastructure to and around Riverton City's activity centers and destinations
- Prioritize and invest in connections to key centers and destinations



Active Transportation Plan

- Analyze current bicycling and walking activity
- Analyze public needs
- Make facility and program recommendations for improvements
- Establish design guidelines
- Define costs, plans, and priorities for implementation



Transportation Needs



Riverton Active Transportation Backbone Network



Improved Bikeways on East-West Arterials



Trails in Riparian Corridors



Quiet Streets



Canal Trails



Riverton Active Transportation System



Upcoming Projects

- **2700 W. Buffered Bike Lanes:** Complete buffered bicycle lanes from 11800 S. to 12600 S. - *Construction 2016*
- **Midas Creek Trail Connections:** Complete the trail west of Bangerter Highway - *Construction 2017*
- **13400 S. west of 2700 W.:** Extend road right-of way to add bicycle lanes - *Construction 2017*
- **12600 S. from Bangerter to Mountain View Corridor:** Add width for bicycle lanes - *Construction 2018*



Upcoming Projects - Map



Proposed Spot Improvements

- Grade separated crossing
- Hybrid Beacon
- BRFB
- High Vis. Crosswalks & Misc. Improvements
- Trailhead
- Quiet Street treatment
- Road Widening
- Intersection Improvements

Proposed Facilities

- Shared-use Path
- Protected Bike Lane
- Buffered Bike Lane
- Bike Lane
- Quiet Street

Existing Facilities

- Bike Lane
- Buffered Bike Lane
- Shared-use Paths
- Trailheads

TRAX Stations

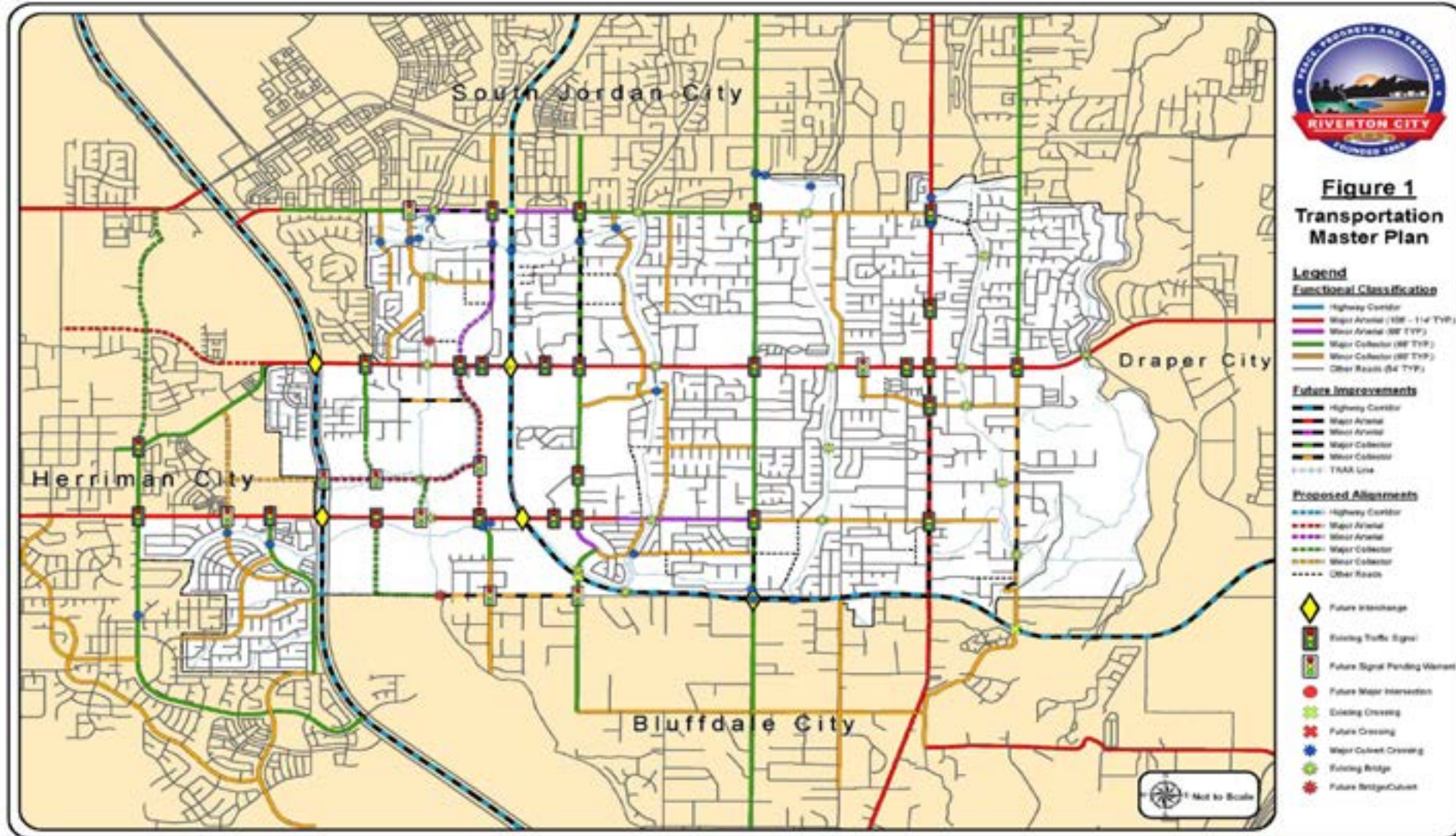
- TRAX Stations
- TRAX Routes
- FrontRunner Stations
- FrontRunner Routes
- Schools
- Parks
- City Boundary

Riverton City Active Transportation Projects

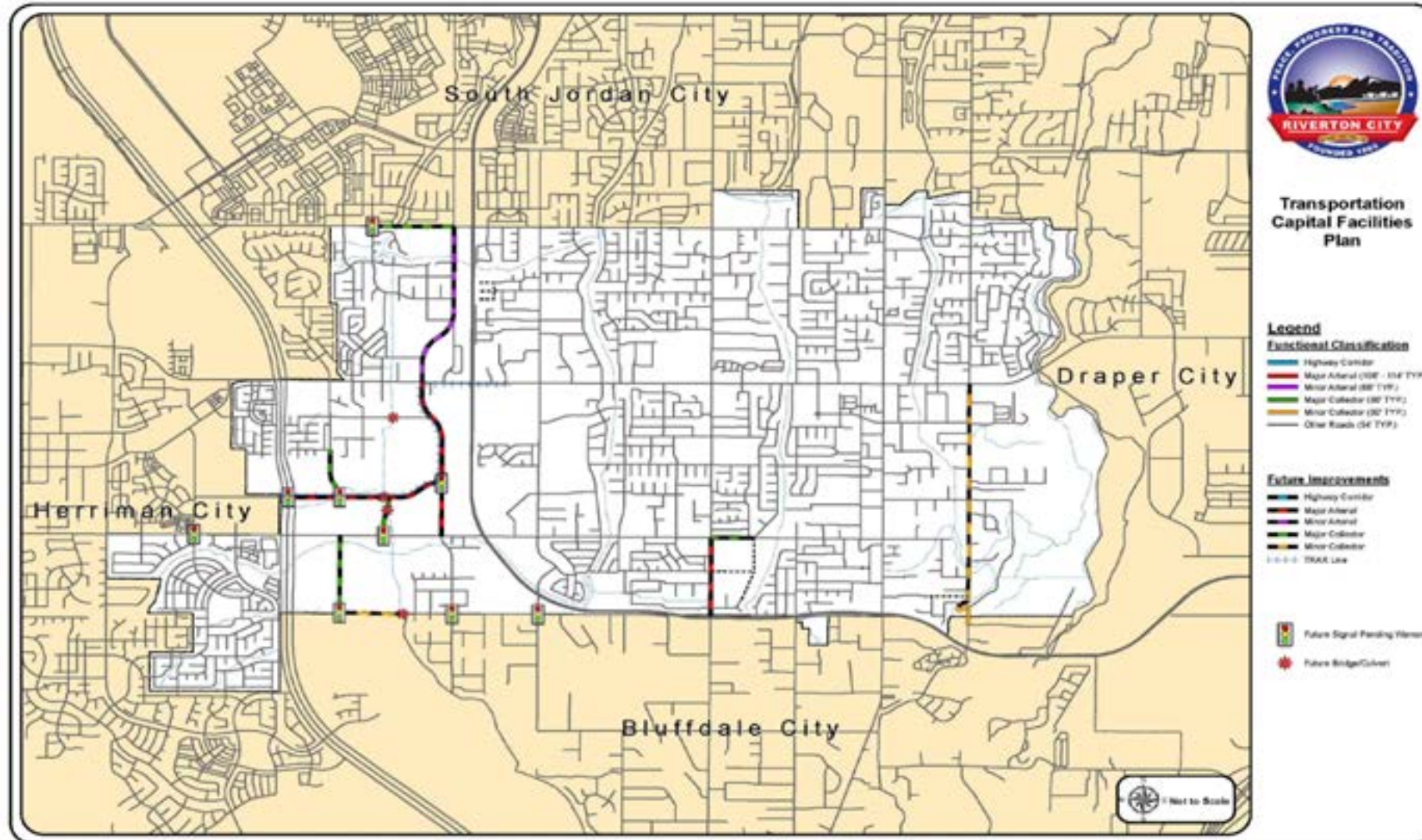
- 2700 W Buffered Bike Lanes
- Mules Creek Trail Connections
- 13400 S - West of 2700
- 12600 S from Bangert - Mountain View



Transportation Master Plan



Transportation Capital Facilities Plan



Engaging Our Citizens



- Open Houses and Meetings
- Surveys
- Council Member Feedback



The Results

Riverton Community Survey Results

98 Total number of survey respondents



live in Riverton

45-69

YEAR OLDS

Most common age group (30%)

Walking and bicycling conditions are currently rated, on average, between fair and good



OVERALL WALKING & BIKING CONDITIONS

Respondents were interested most in walking & bicycling to



PARKS



TRAILS & PATHS



FRIENDS & FAMILY

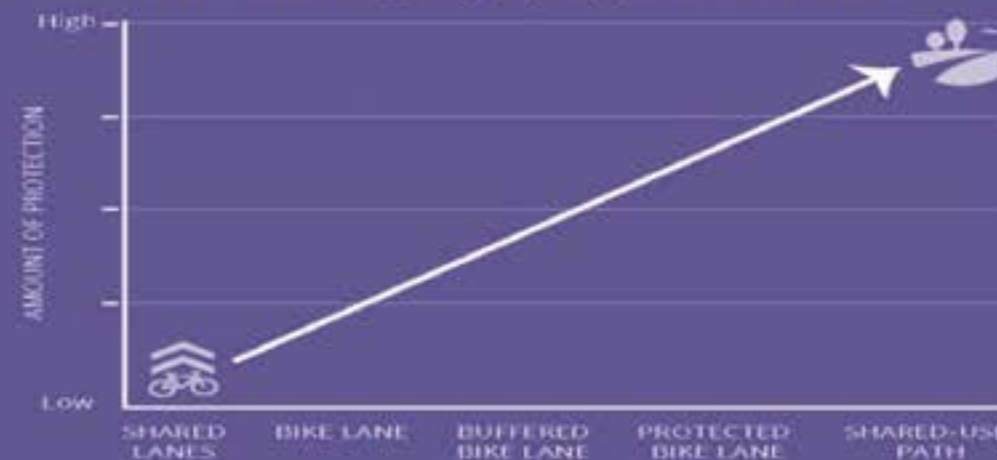


SCHOOL



SHOPPING

The level of protection a bike facility offers, coincides with participants' responses to the question, **"What is the best way to get people to bike more?"**



The Results

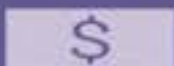
WALK & BIKE HABITS



More than **80%** walk at least a couple times a week.



Respondents were **slightly more likely to allow their kids to walk to school** and friends' houses than bike there.



Top priorities for investment: **improve bike lanes, trails, sidewalks and paths; improve crossings, and calm traffic**

Most common reasons for not walking or bicycling more often:



TOO MUCH TRAFFIC AND/OR TRAFFIC IS TOO FAST

LACK OF SIDEWALKS, BIKE LANES, ROUTES, OR PATHS



UNSAFE STREET CROSSINGS

Challenges

- Securing Funding
 - CMAQ
 - *County Grants*
 - *Corridor Preservation*
 - *General Fund*
 - *Impact Fees*
 - STP
 - TAP
 - ZAP
 - *Other Local Funding*
- Gathering Public Input
- Determining Right-of-Way



A Big THANK YOU To Our Community Partners!





Ogden City & Active Transportation



WHERE DOES IT START?



OGDEN INFRASTRUCTURE

Funding Demands

\$6,750,000 Street Maintenance

\$3,060,000 Curb & Gutter

\$20,377,500 Sidewalks

\$31,187,500 Backlog

Actual spent: \$5,454,053
in past six fiscal years
combined



WHEN DOES IT START?



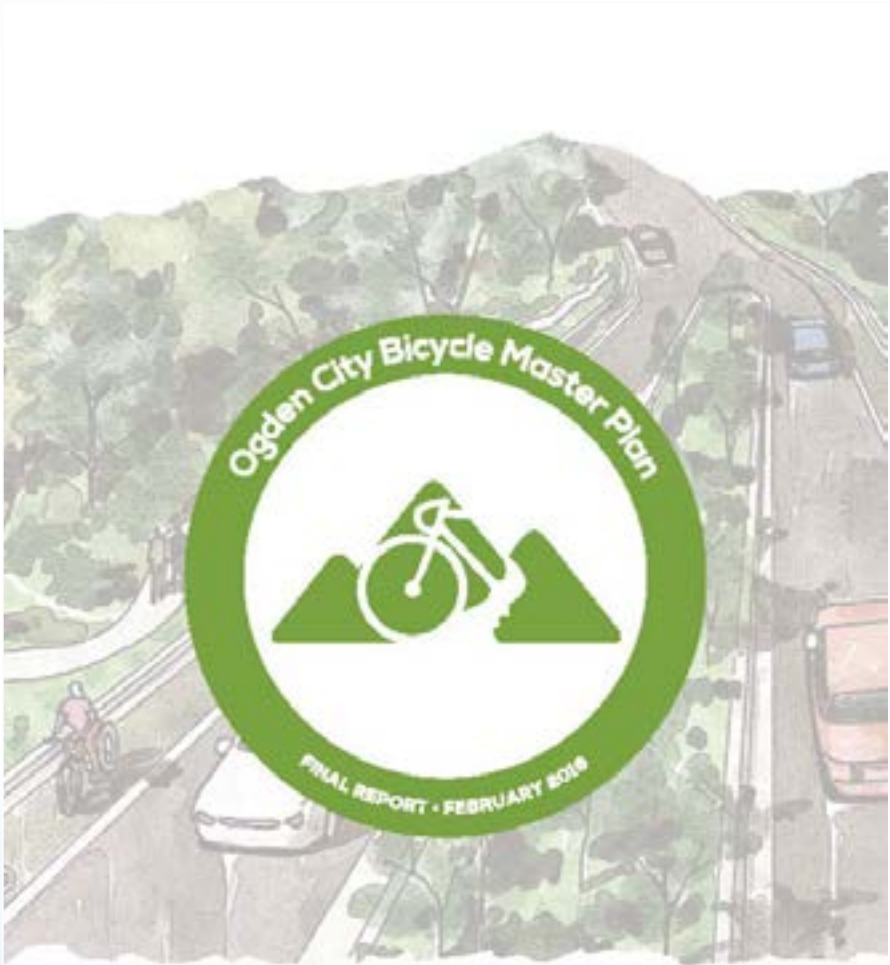
IT CAN START NOW!



PARTNERING WITH UDOT



BICYCLE MASTER PLAN



GRANT PROMENADE



GRANT PROMENADE



GRANT PROMENADE



GRANT PROMENADE



Farmington, UT

Active Transportation and Transit





Farmington Active Transportation Plan

Connecting Our Community
Through Safe Walking & Bicycling

MARCH 2016



Public Involvement



- Public Open House
- Steering committee
- Field Investigation Ride
- Interactive Online Mapping Tool
- Online Public Survey

Joint Community Survey Results for Farmington

1,023 Total number of survey respondents



36-45
YEAR OLDS

Most common age group (36%)

OVERALL WALKING & BIKING CONDITIONS

Walking and bicycling conditions are currently rated, on average, between fair and good



Respondents were interested most in walking & bicycling to



85% feel comfortable or very comfortable walking



NOT COMFORTABLE in traffic or on the road

COMFORTABLE in some traffic situations and in bike lanes

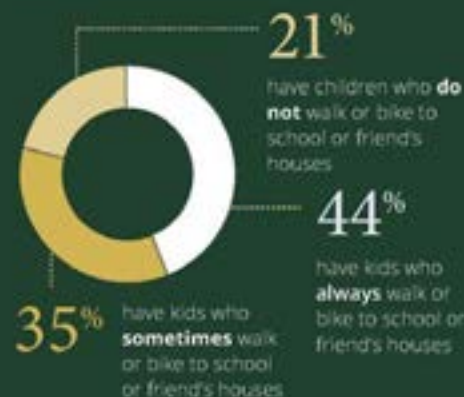
The most common type of person is one that is **not comfortable in traffic and will only ride a bicycle on paths and quiet residential streets.**

Top priorities for investment:



WALK & BIKE HABITS

Out of respondents with children:



Since 1969, the percentage of children walking or bicycling to school in the United States has dropped from 50% to 13%.



Public transit use is much higher when the trip begins with walking or biking



Lack of safe crossings, high motor vehicle speeds, and too much traffic were the most cited reasons that their kids did not walk and bike more.

ADDITIONAL COMMENTS



WEST ↔ EAST

282 ADDITIONAL COMMENTS

By far, the number one recommendation is **making east-to-west connections safer and more abundant**, especially around Park Lane, FrontRunner, and Station Park

Public Survey Respondents' Top Priorities for Investment



IMPROVE PATHS &
TRAILS NETWORK

73%

Improve Paths and Trails Network





WEST  EAST

282 ADDITIONAL COMMENTS

By far, the number one recommendation is **making east-to-west connections safer and more abundant**, especially around Park Lane, FrontRunner, and Station Park

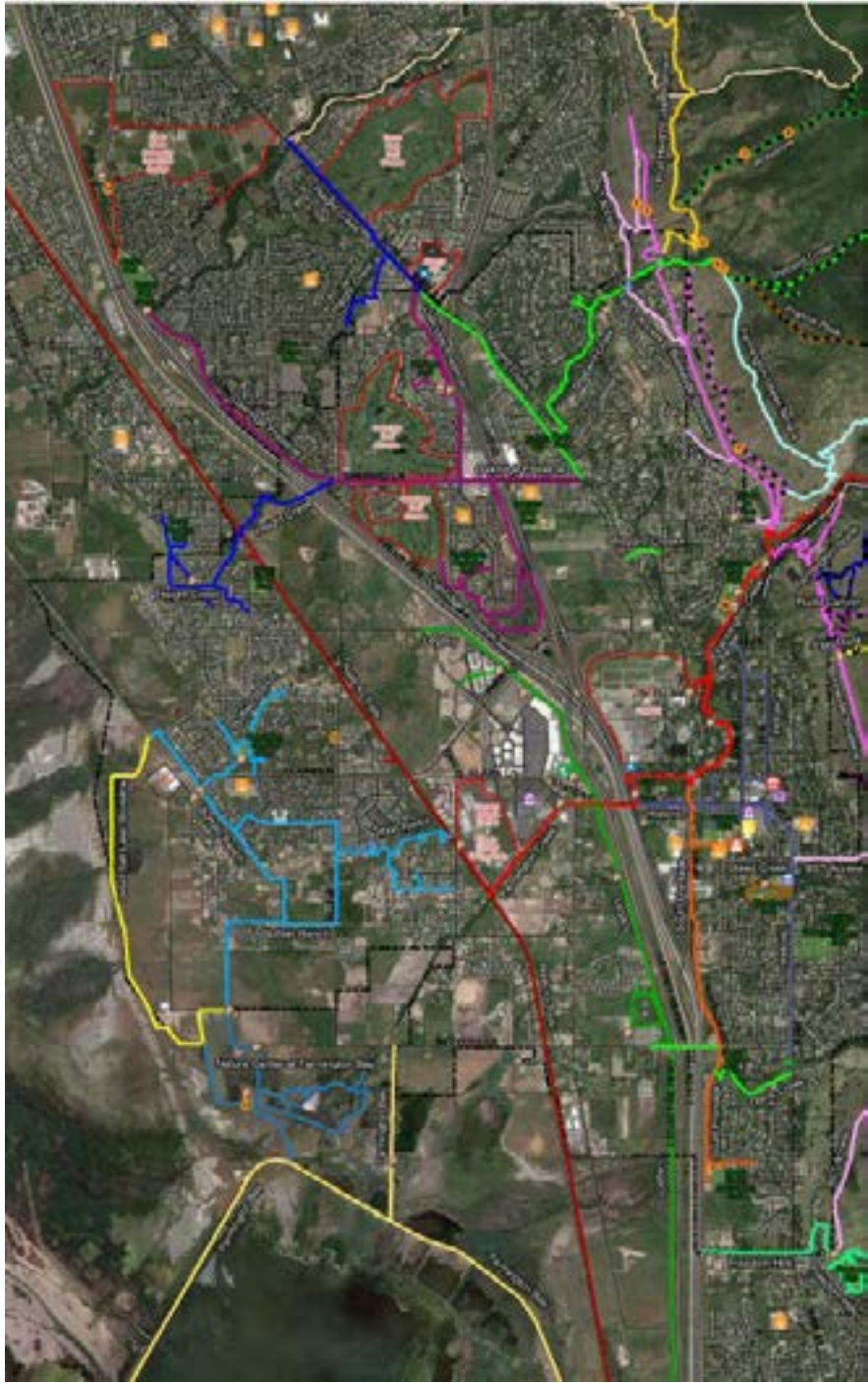
Making
east-to-west
connections
more safe



Existing Systems



Trail Map



Trail Book



Lagoon Trail



D&RGW Trail



Davis Creek Trail



Buffalo
Ranch
Trail

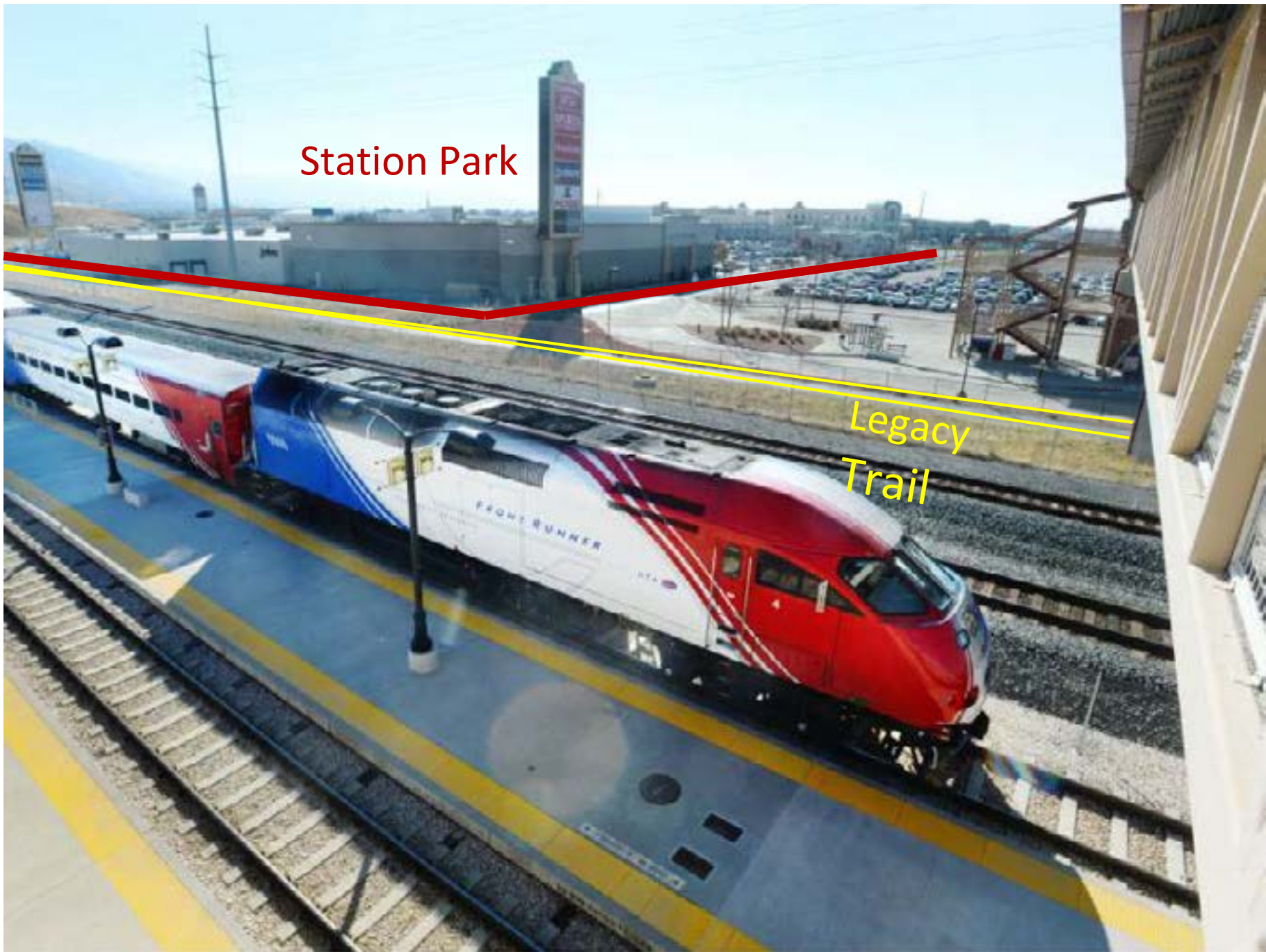


Legacy Trail



Demand, Origin, and Destination

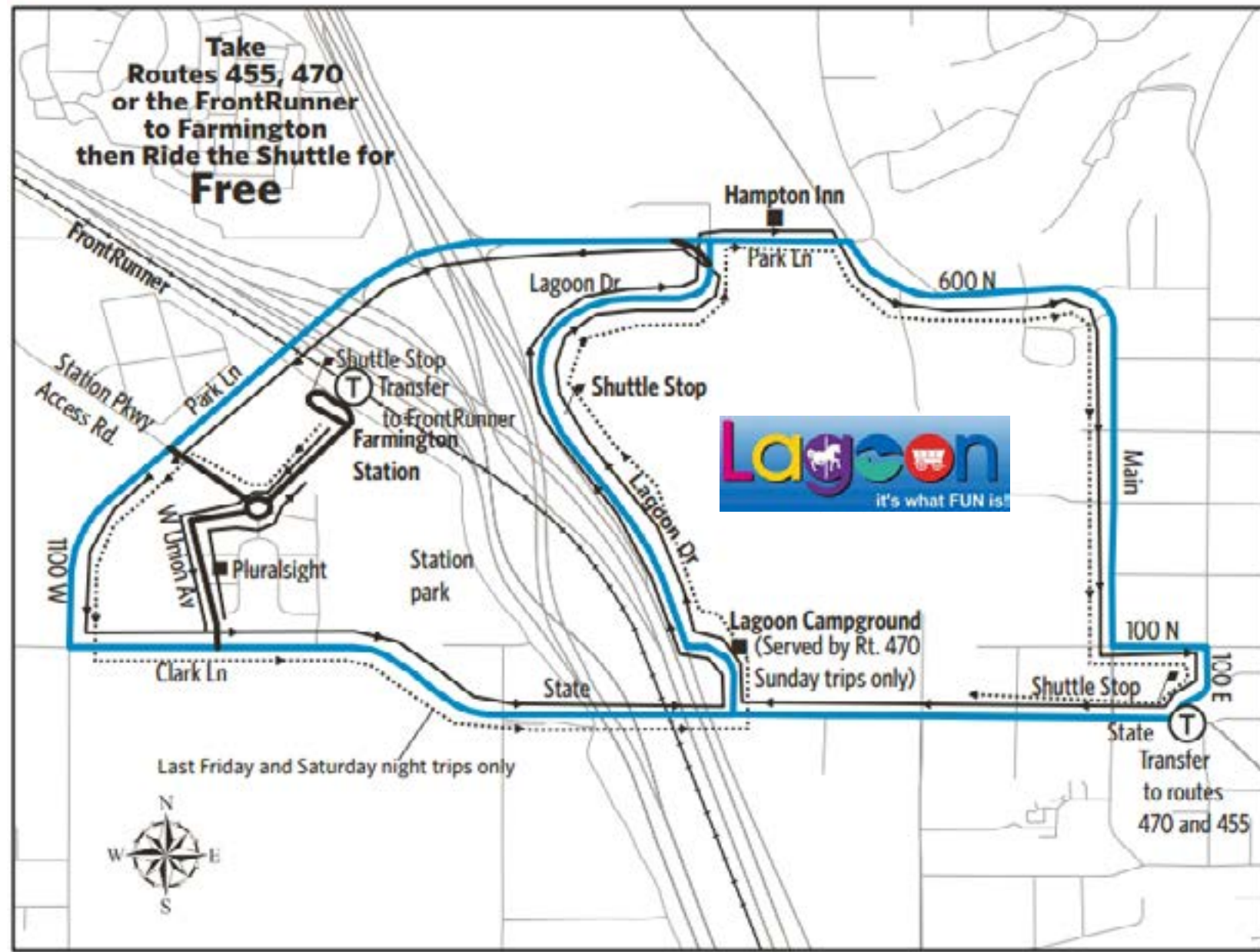




Station Park

Legacy Trail

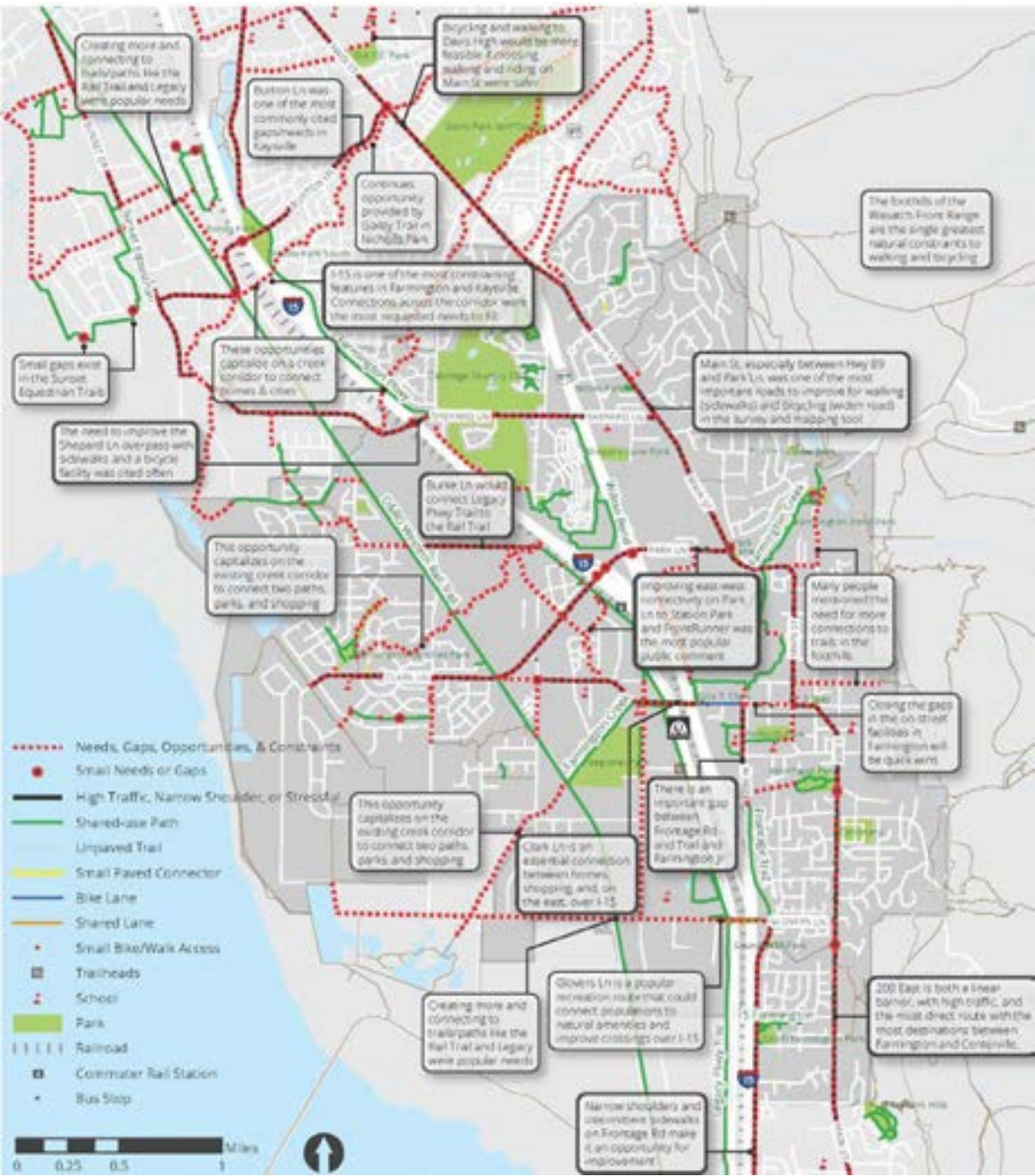
Rt 667 Lagoon/Station Park Shuttle



Lagoon Shuttle



Needs, Gaps, Opportunities and Constraints



Recommended Improvements



Bikeways

Arterial/Highway Bikeway Continuum (without curb and gutter)



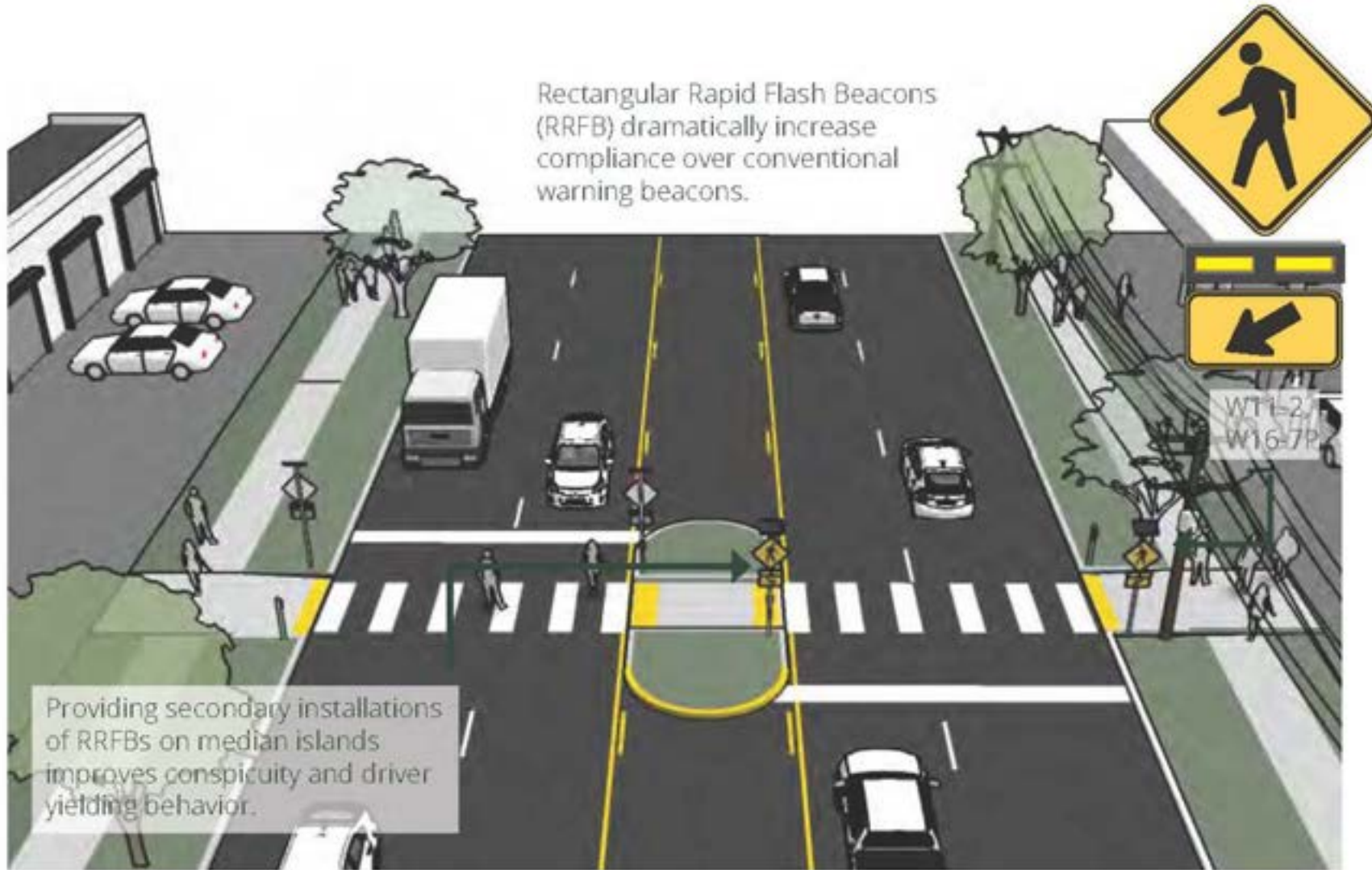
Arterial/Highway Bikeway Continuum (with curb and gutter)



Collector Bikeway Continuum



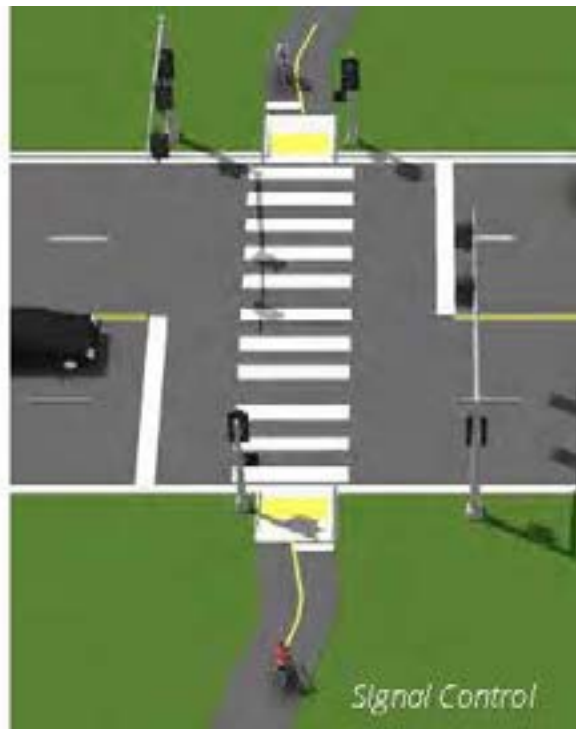
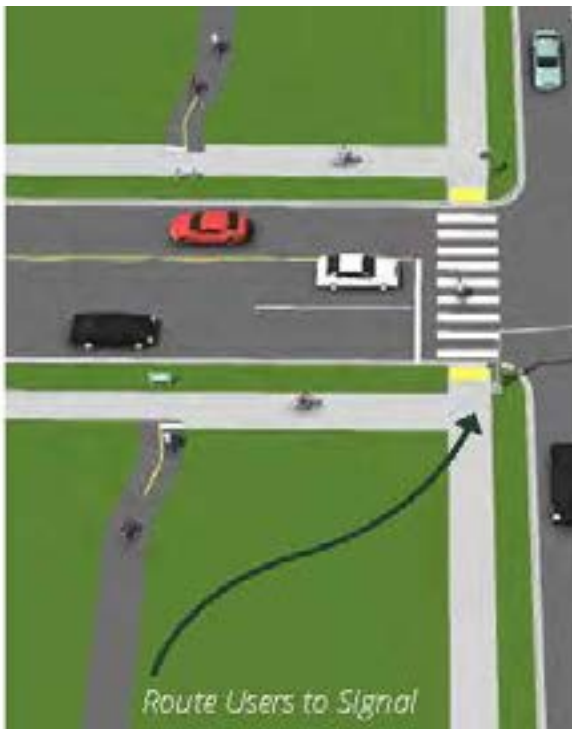
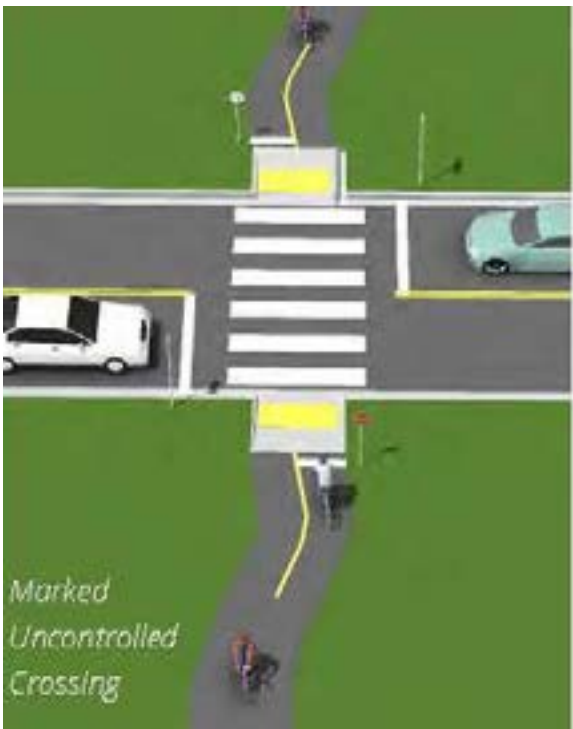
Rapid Flash Beacons



Channelized Turn Lanes



Shared-use Path Crossings



Farmington, UT

Active Transportation and Transit



Questions / Comments?



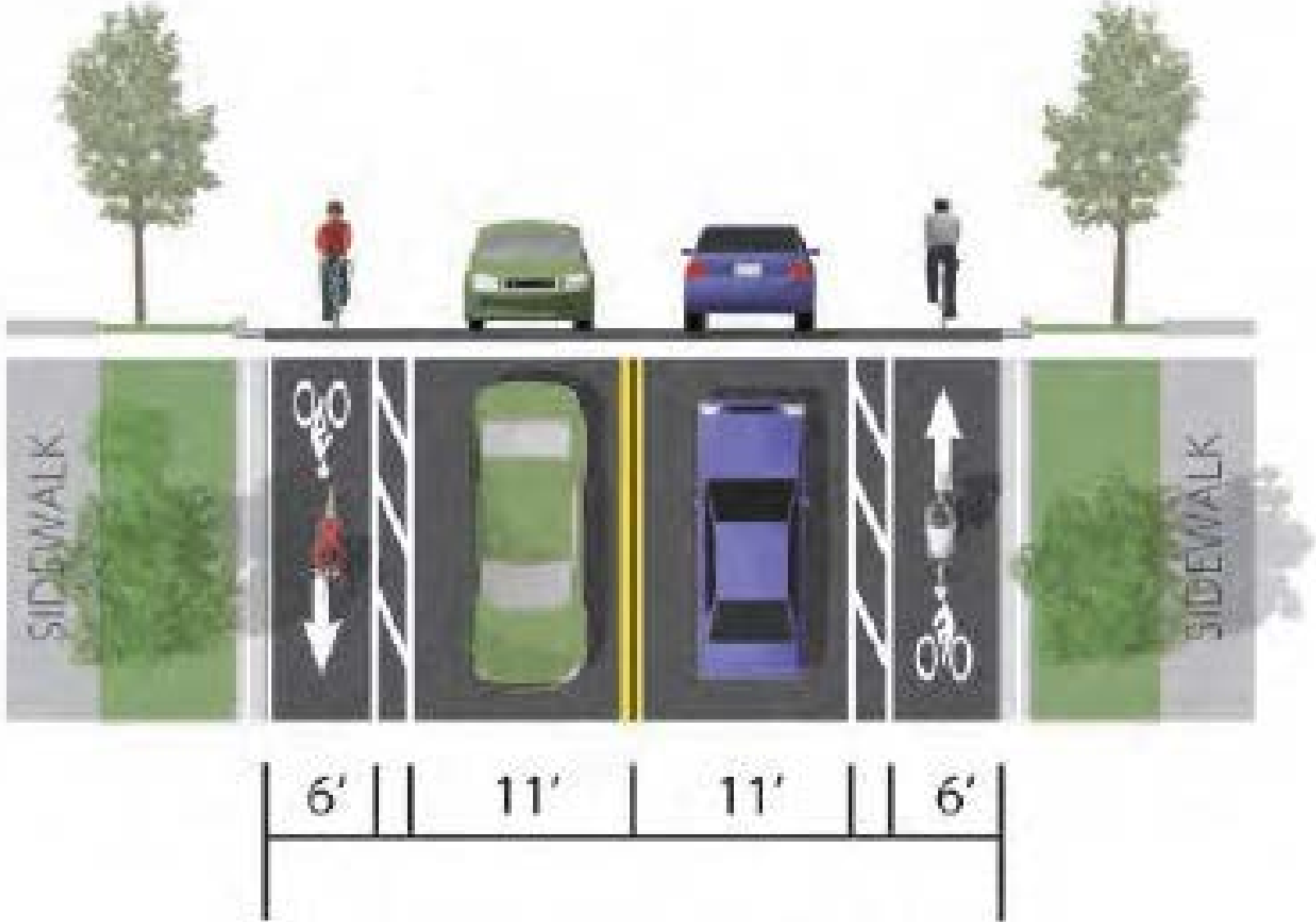
Prioritization



Project #1: Park Lane Overpass Improvements



Project #2: Main Street Widening, Bike Lanes, and Sidewalks



Project #3: 200 East Widening, Bike Lanes, and Sidewalks



Project #4: Shepard Lane I-15 Crossing Improvements



Project #5: West Davis Corridor Trail



Project #6: Legacy Parkway Trail North Extension

