

Metropolitan Transportation Plan (MTP, RTP, LRTP)



Angelo Papastamos UDOT, Christopher Chesnut UTA
Shawn Seager MAG, Val John Halford WFRC

Metropolitan Planning Organization (MPO)

- Urbanized areas of 50,000 Population
- Required by FHWA and designated by the Governor
- Convene – Mayors, County Commissioners, UDOT, UTA, DEQ etc
- ***Plan - Metropolitan Transportation Plan***
- Program – Transportation Improvement Plan - STIP




Transportation Planning Responsibility



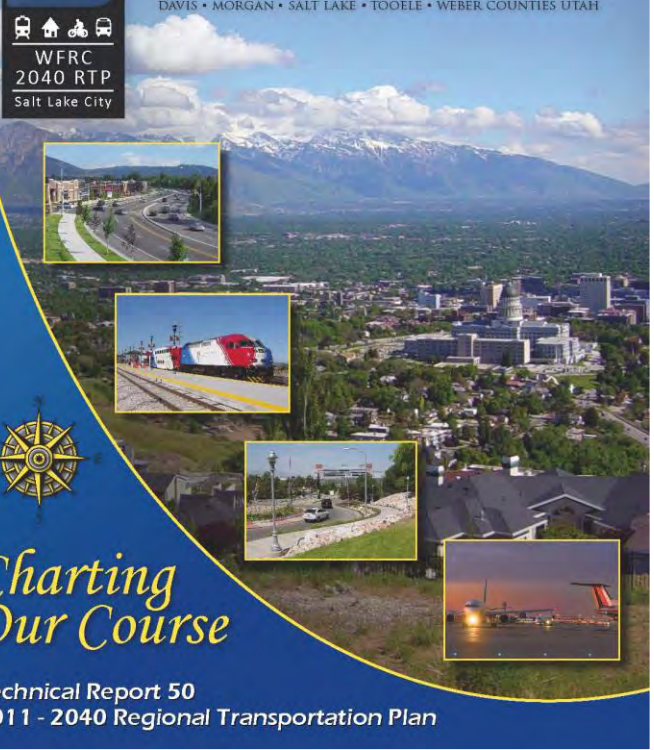




Metropolitan Transportation Plan (2011 MTP)





WASATCH FRONT REGIONAL COUNCIL
METROPOLITAN PLANNING ORGANIZATION
DAVIS • MORGAN • SALT LAKE • TOOELE • WEBER COUNTIES UTAH





WFRC
2040 RTP
Salt Lake City










Charting Our Course

Technical Report 50
2011 - 2040 Regional Transportation Plan

UTAH COUNTY METRO AREA
Improving Our Community's Mobility, Economic Vitality & Quality of Life.

WFRC, MAG, UDOT & UTA Cooperation

- Wasatch Choice for 2040
- HUD Sustainable Communities Grant
- Modeling - Land Use & Travel Demand
- Utah's Household Travel Survey
- Active Transportation Plan
- Utah's Unified Transportation Plan



Joint Policy Advisory Committee

(JPAC)



Metropolitan Transportation Plan

- Updated every 4 years
- MTP must be financially constrained
- Conform to State Air Quality Plan
- Projects include Roadway , Transit, and other modes
- Projects serve the Wasatch Choice for 2040 land use assumption





MTP



PUBLIC INVOLVEMENT



Identify Transportation Needs

Long-Range Transportation Plan

- Prioritize needs
- Revenue assumptions
- Preliminary cost estimates

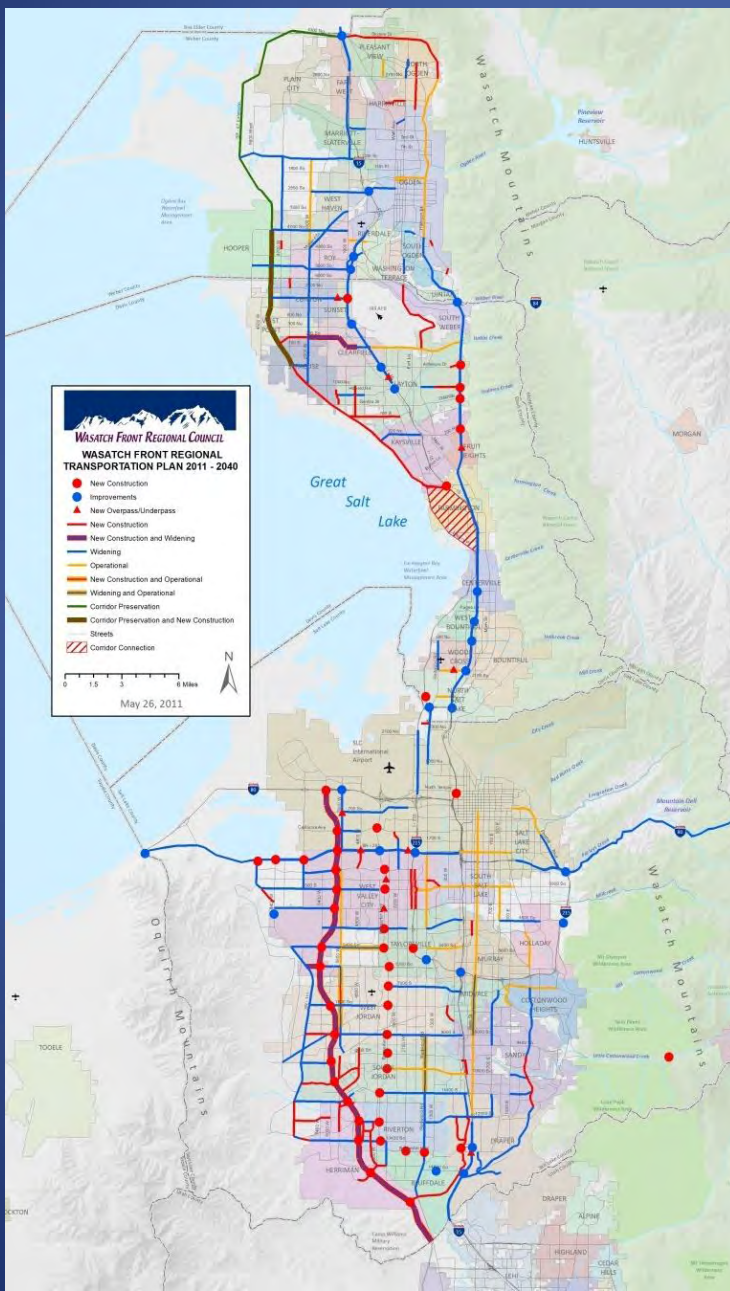
Statewide Transportation Improvement Program

- Identify funding sources
- Environmental reviews
- Project design

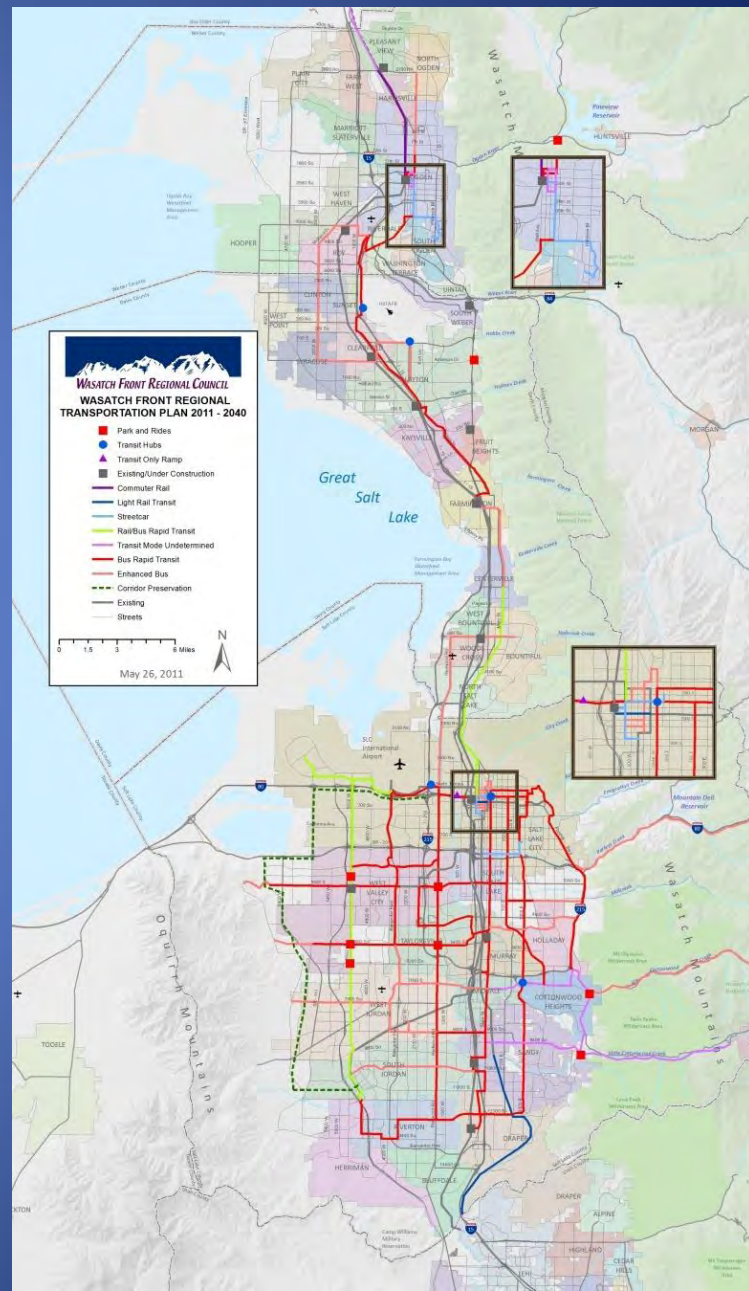
Construction

Maintenance

REGIONAL TRANSPORTATION PLAN HIGHWAY PROJECTS



REGIONAL TRANSPORTATION PLAN TRANSIT PROJECTS





Transit Projects - 2040 Metropolitan Transportation Plan

Adopted: May 5, 2011



Road Projects - 2040 Metropolitan Transportation Plan

Adopted: May 5, 2011

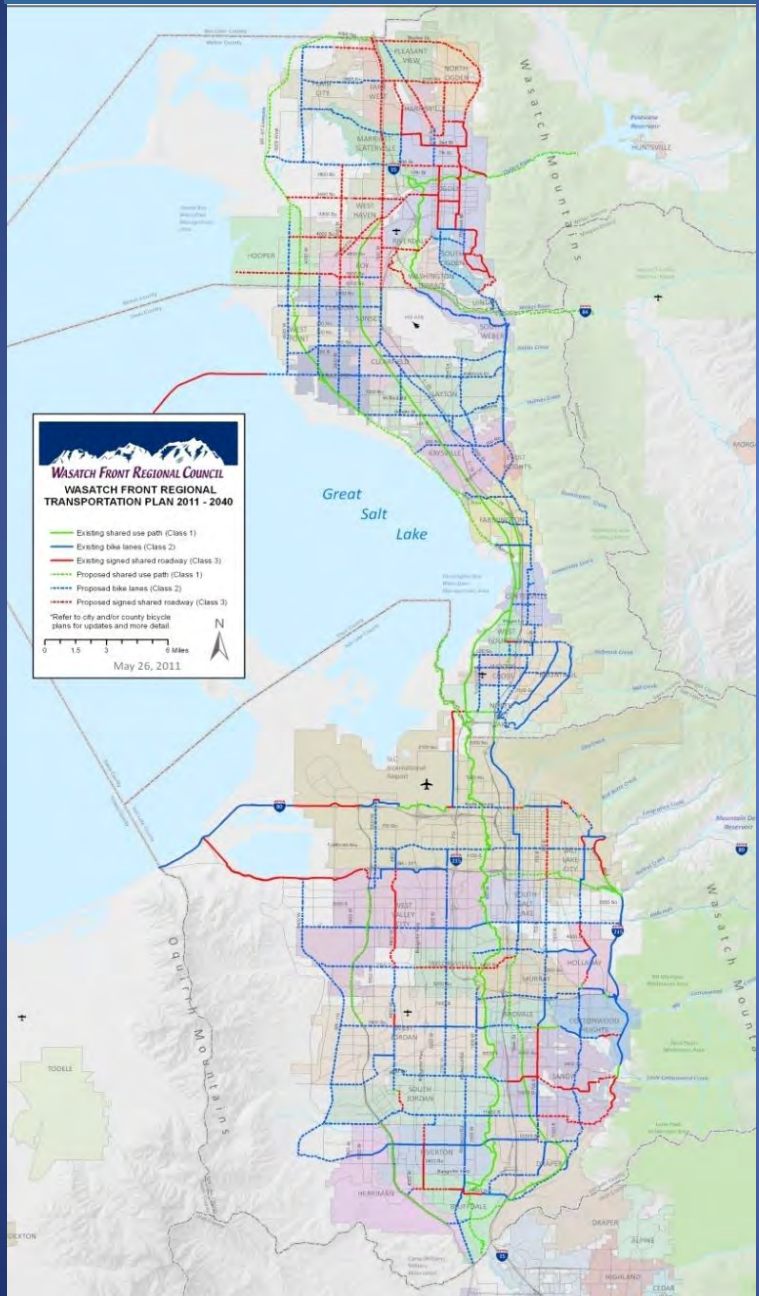




Wasatch
CHOICE for 2040

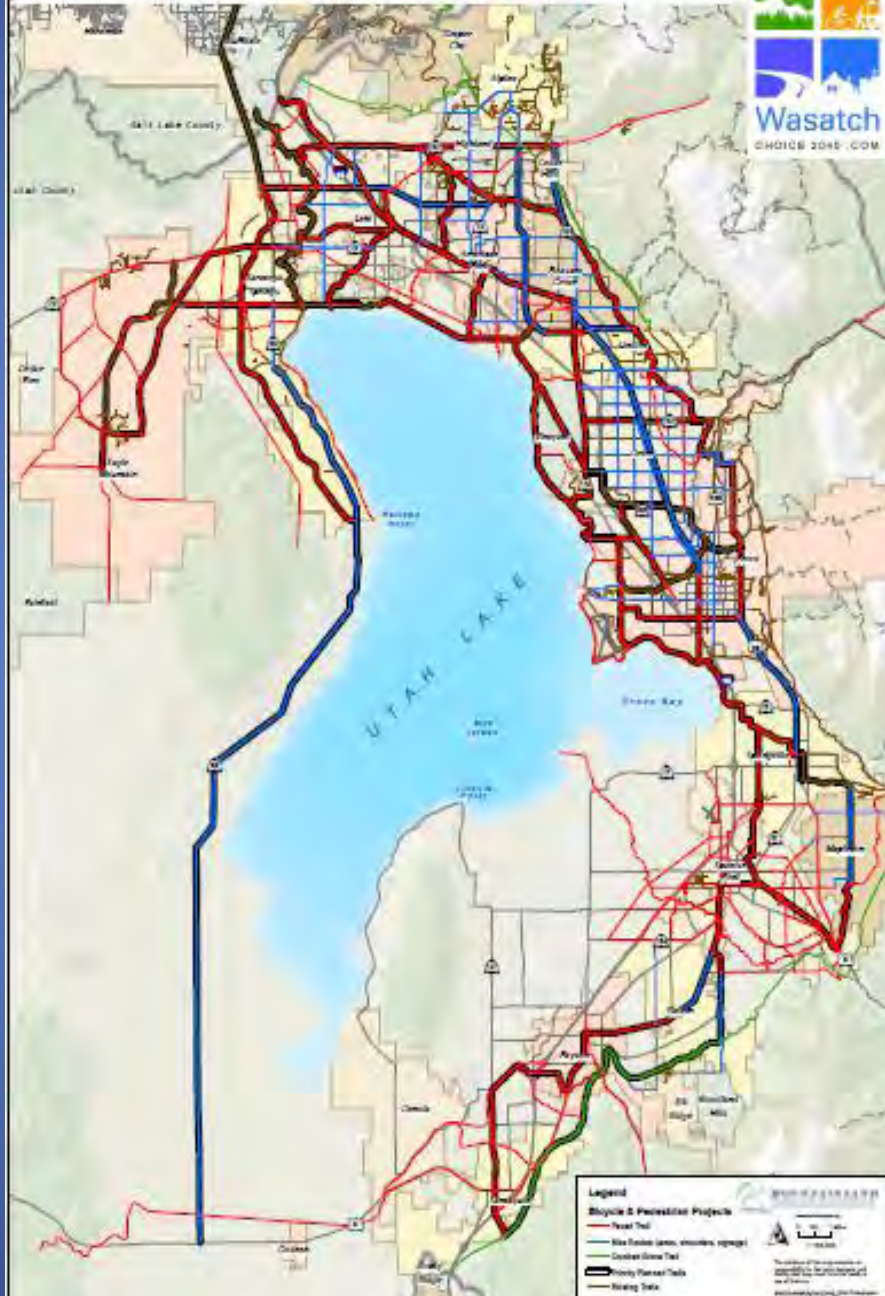


REGIONAL BICYCLE PLAN

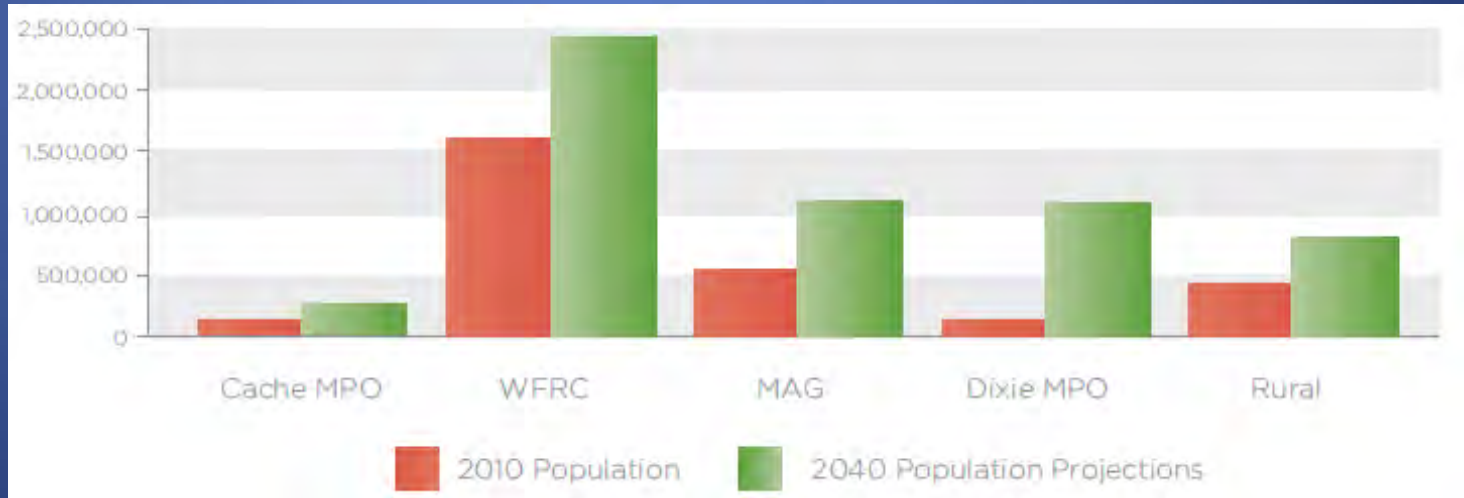
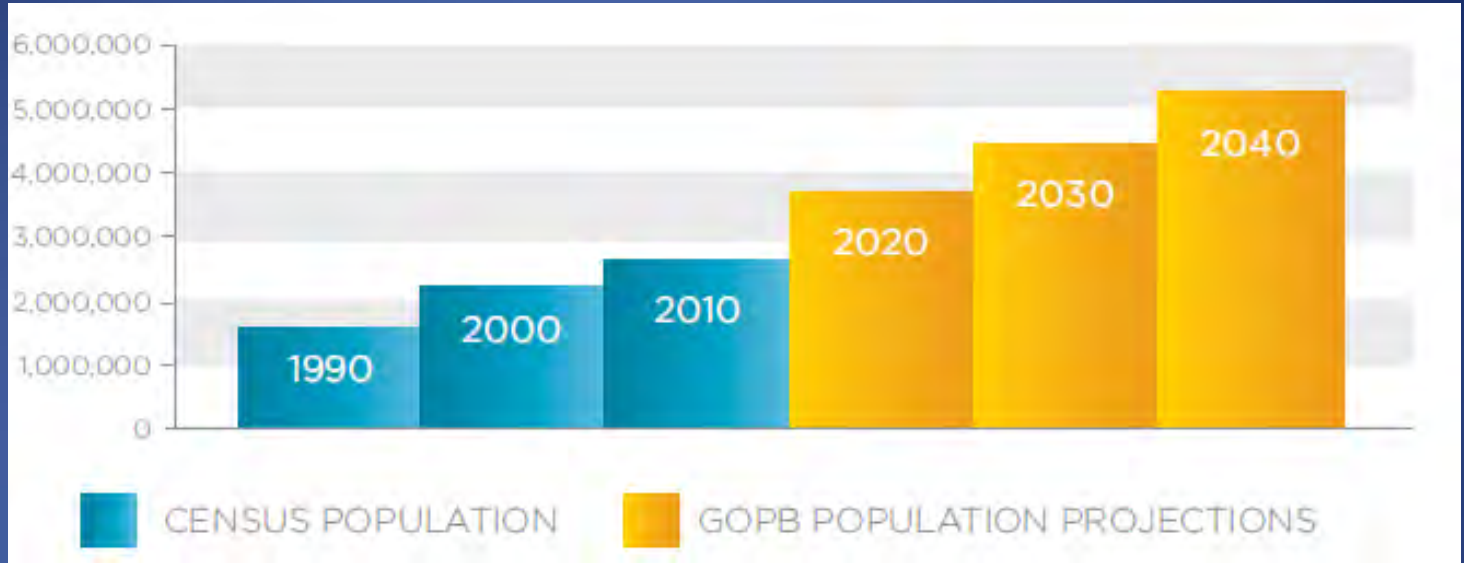


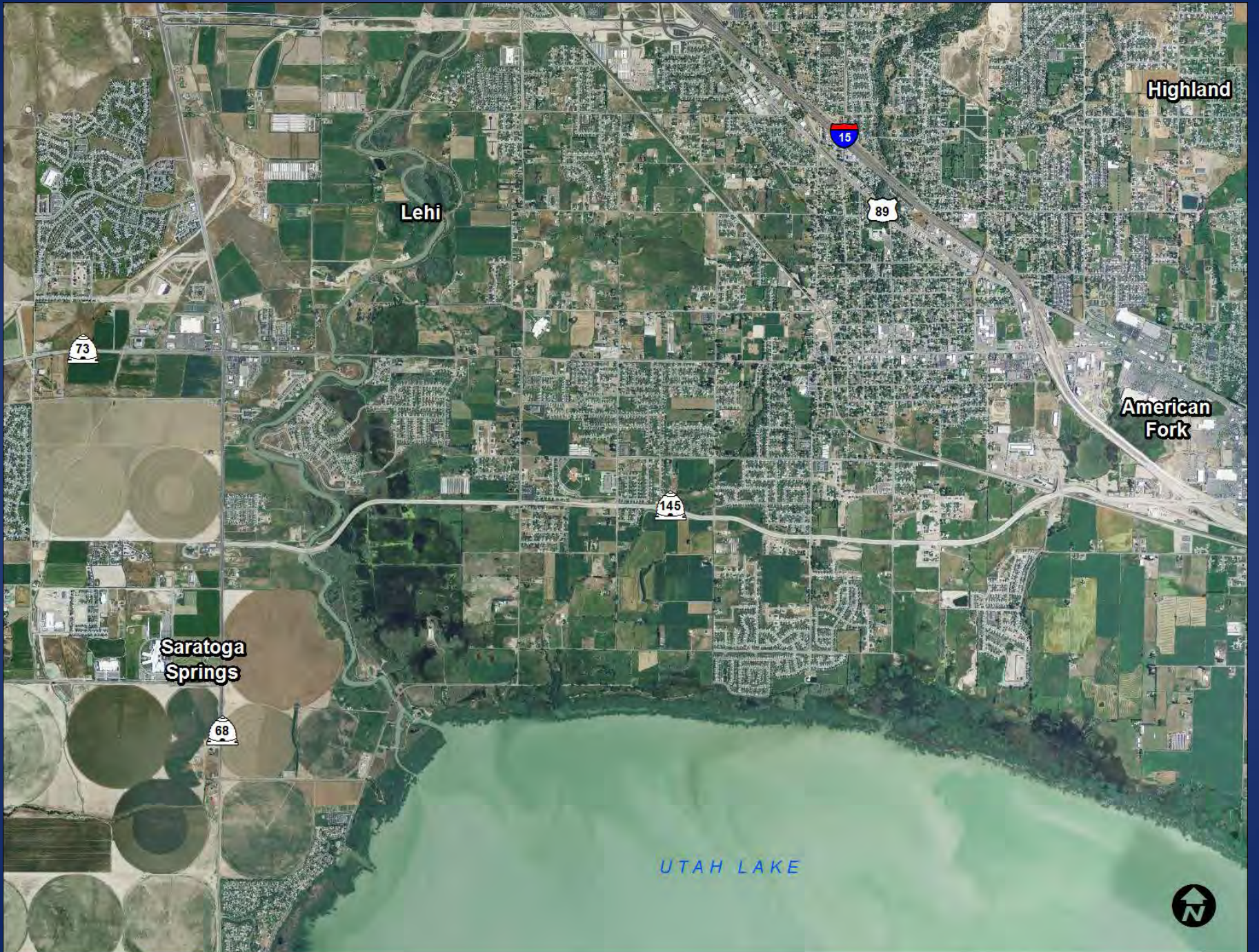
Bicycle & Pedestrian Projects - 2040 Metropolitan Transportation Plan

Adopted: May 5, 2011



Population Projections





Highland

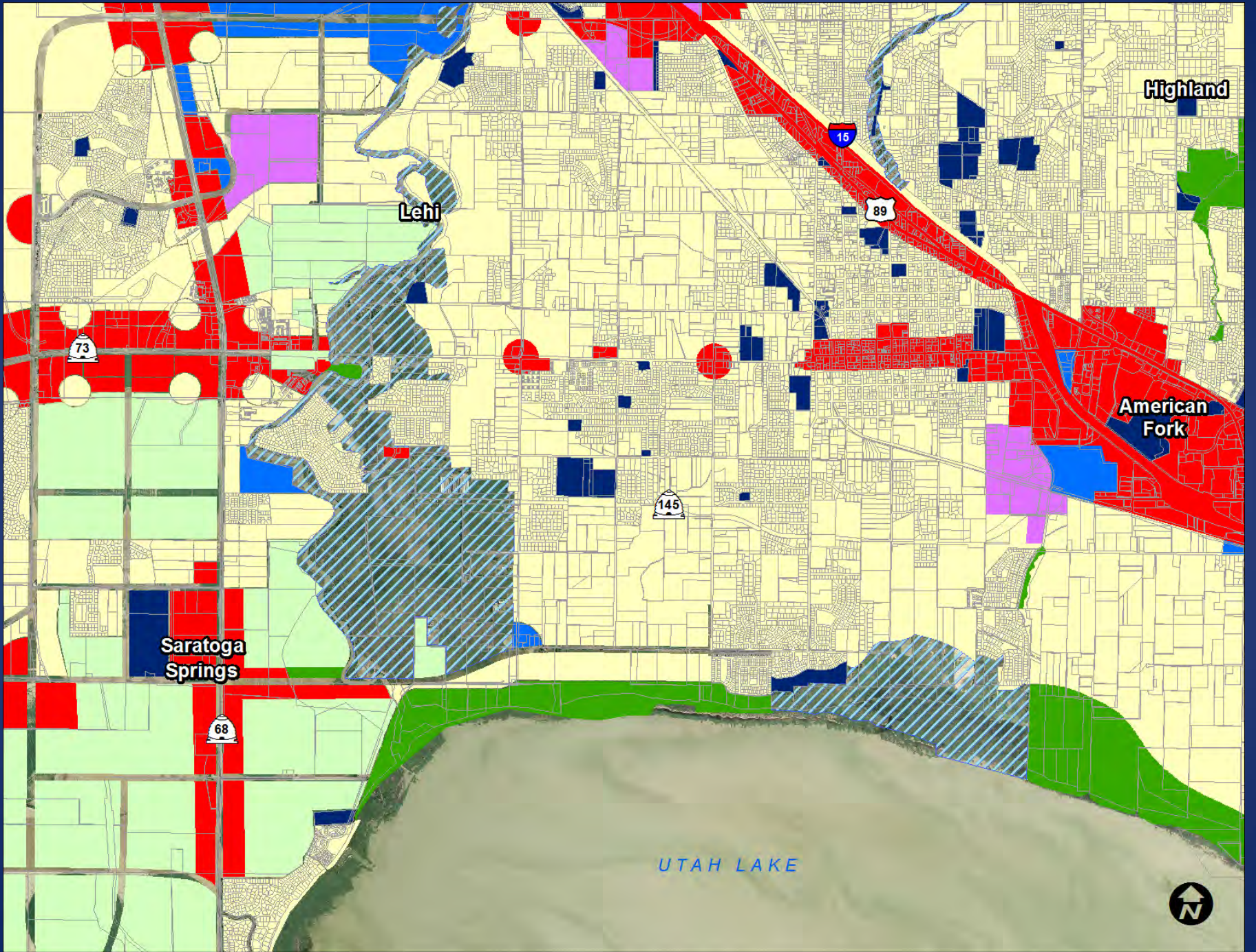
Lehi

American Fork

Saratoga Springs

UTAH LAKE





Highland

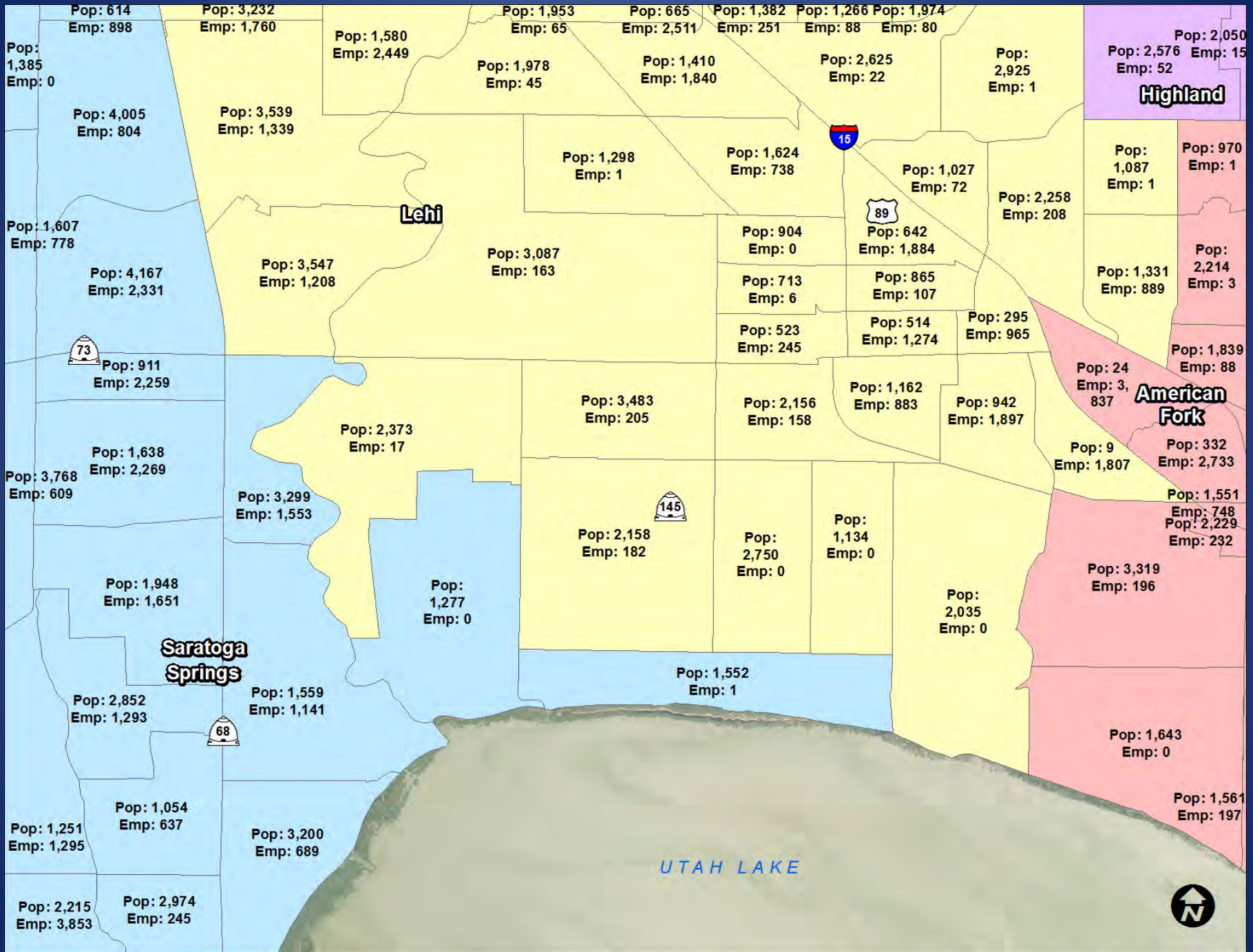
Lehi

American Fork

Saratoga Springs

UTAH LAKE

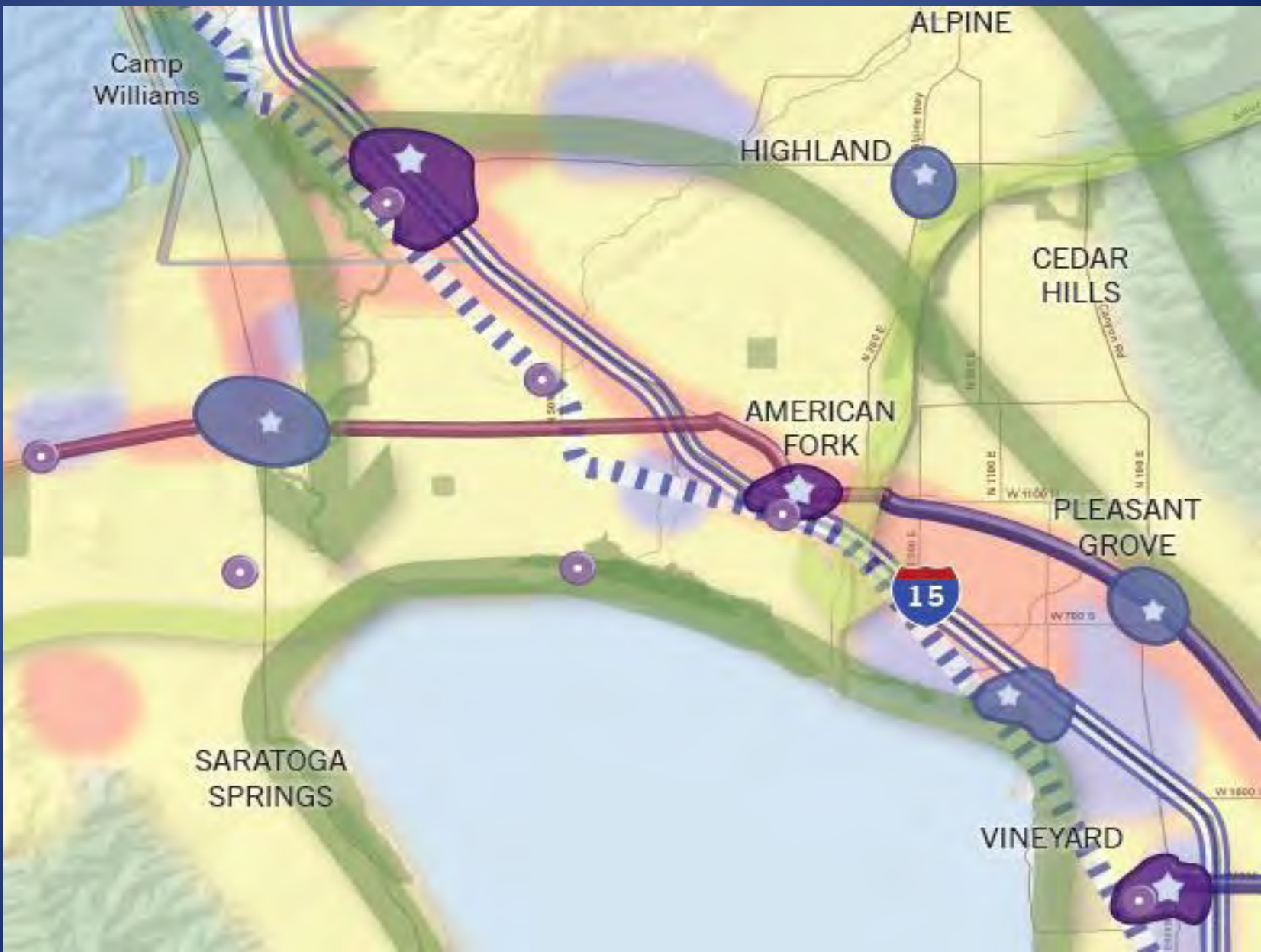




Draft 2040 Pop & Jobs Projection



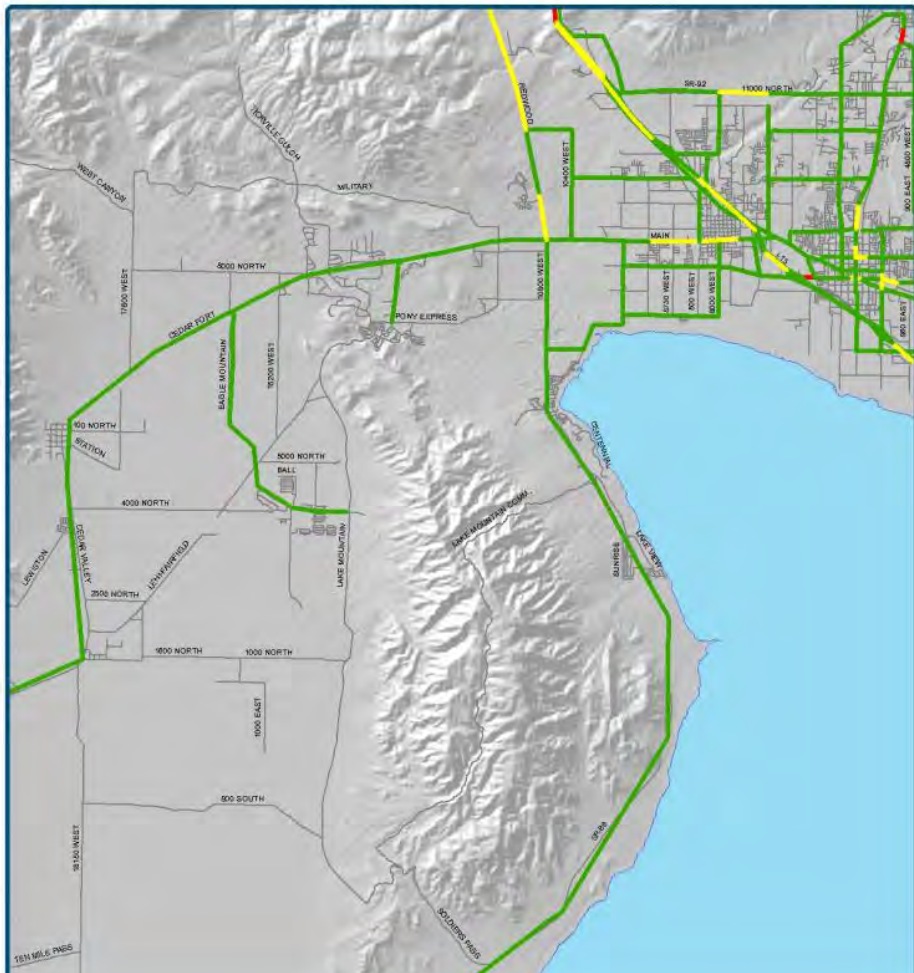
WC2040 Vision



Red, Yellow, Green Level of Service

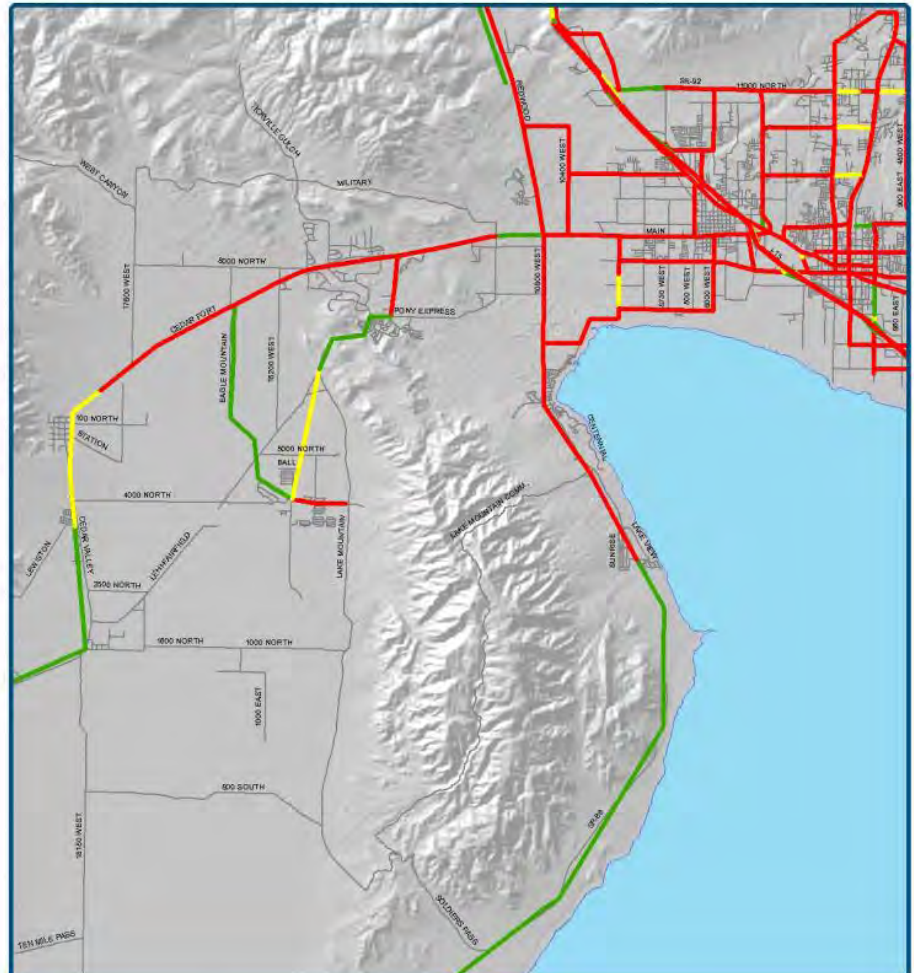
Utah Valley Transportation Studies
lake mountain transportation study

Figure 2.6
2001 Level of Service



Utah Valley Transportation Studies
lake mountain transportation study

Figure 3.7
2030 No Build Level of Service





Highland

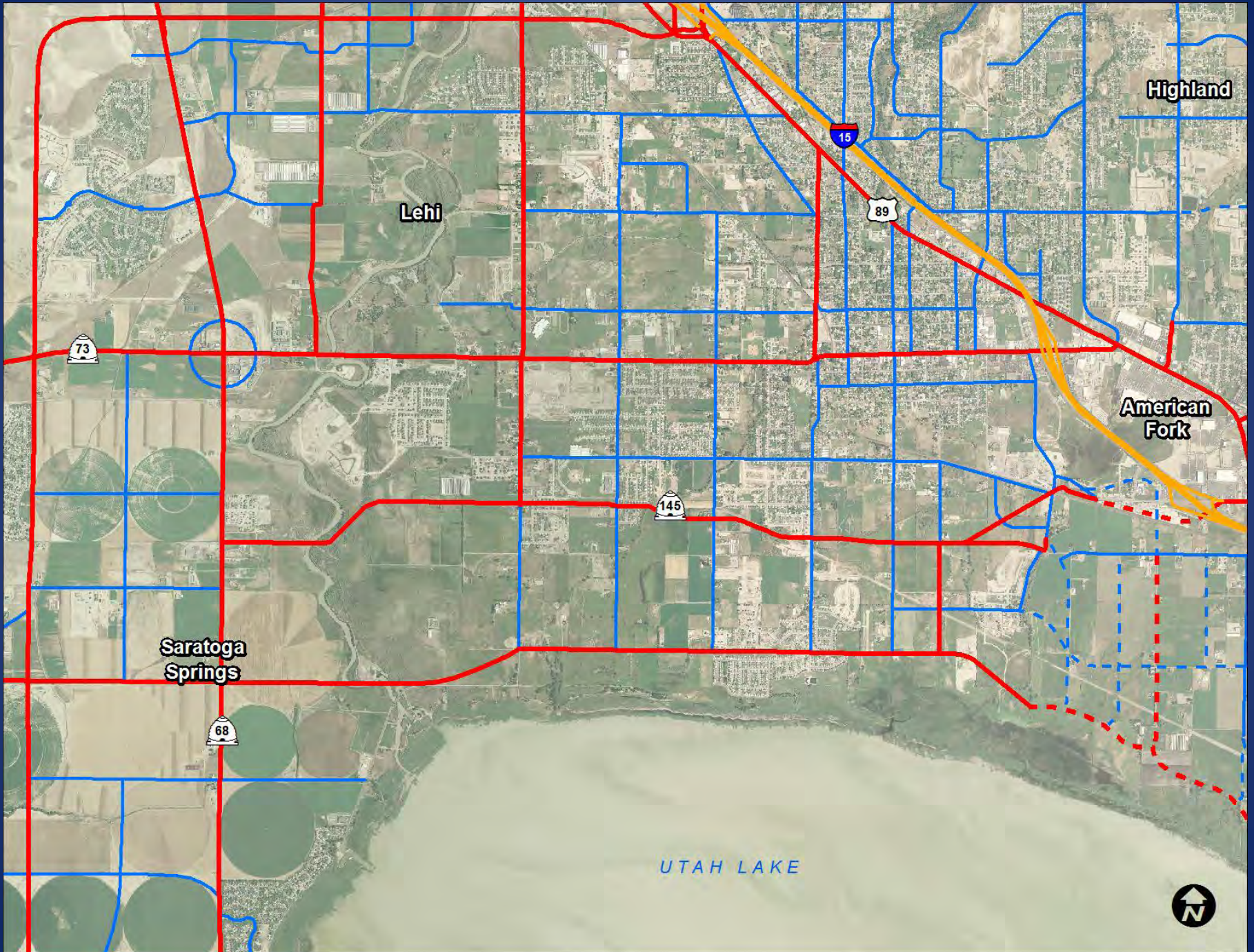
Lehi

American Fork

Saratoga Springs

UTAH LAKE





Highland

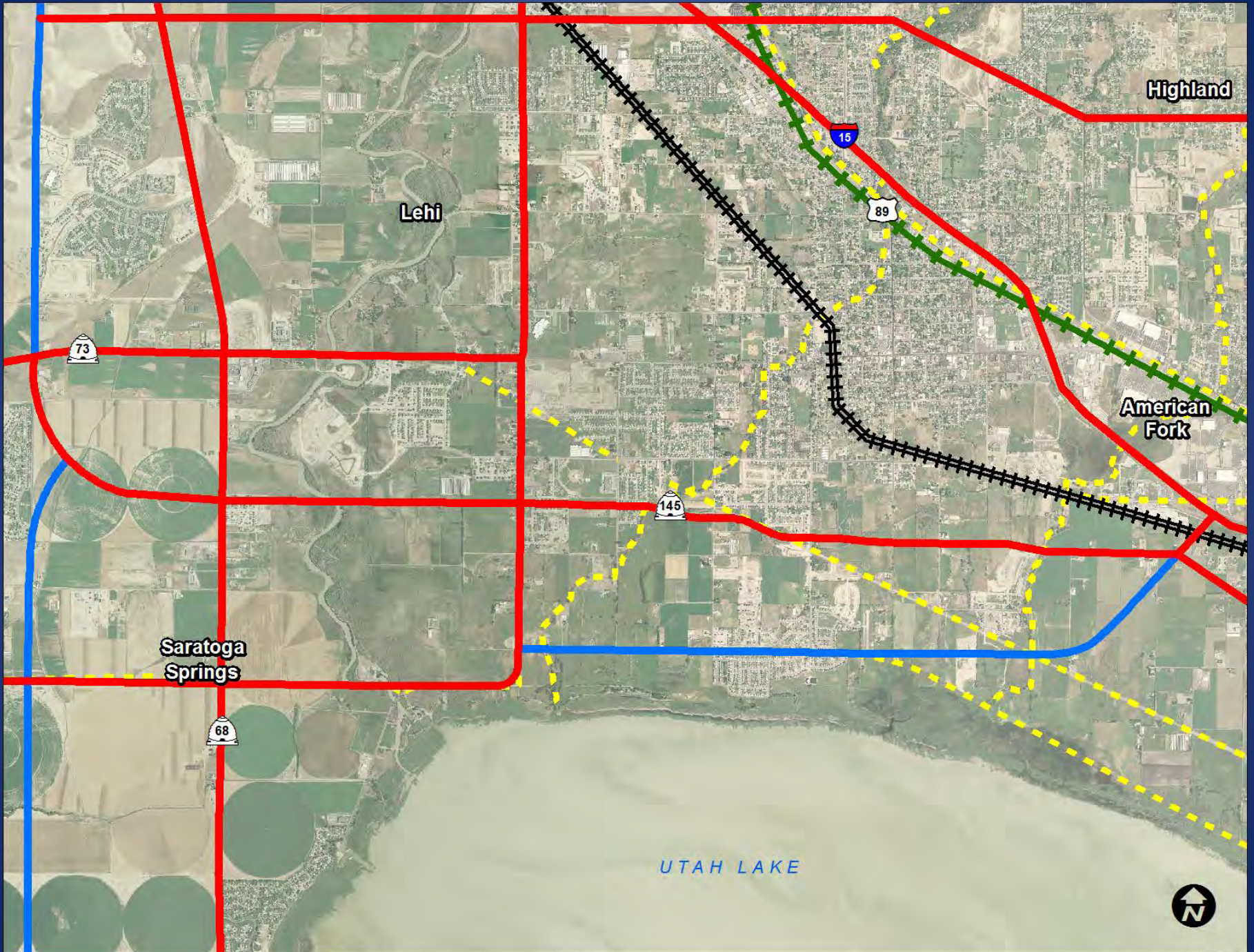
Lehi

American Fork

Saratoga Springs

UTAH LAKE





Highland

Lehi

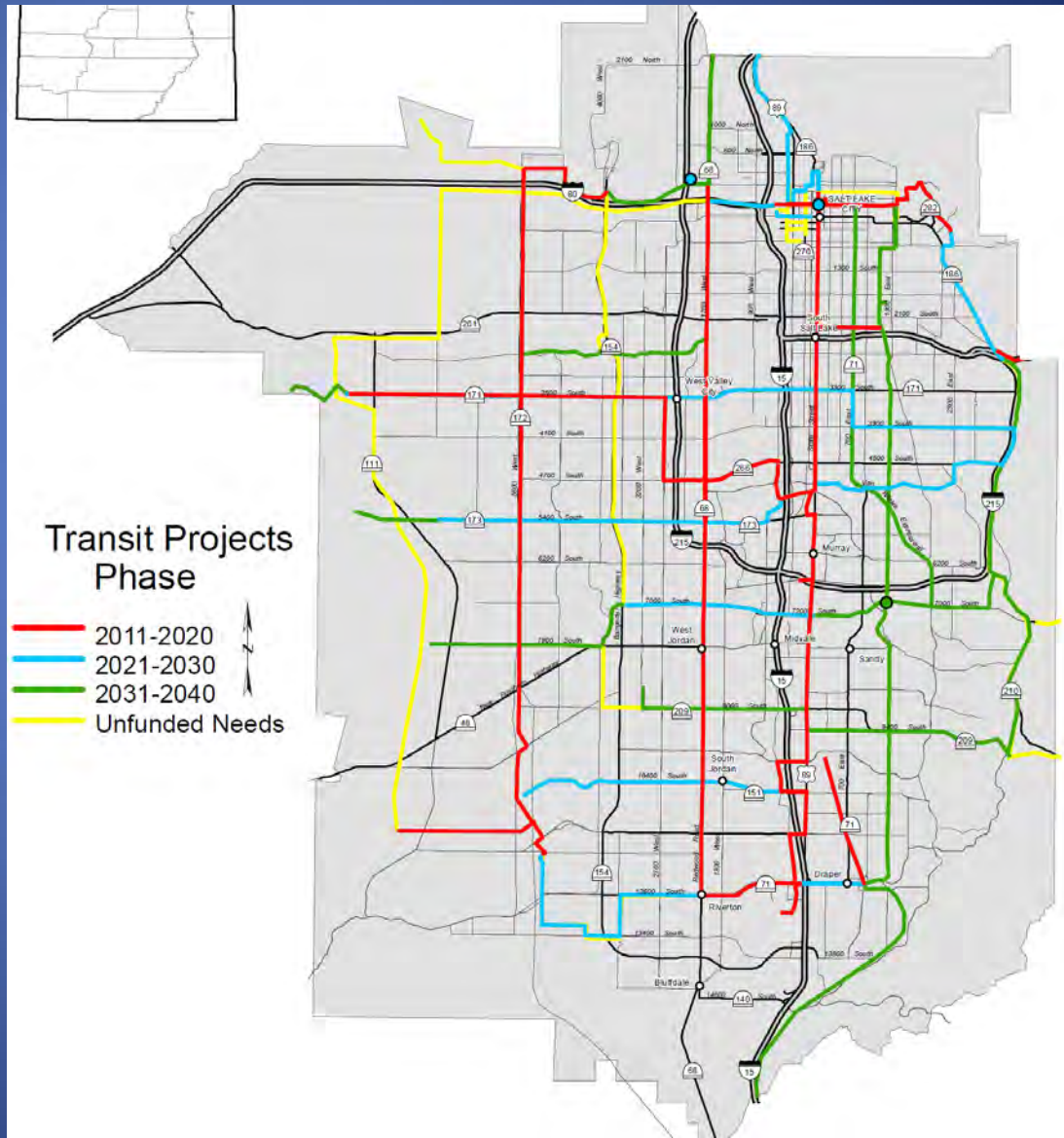
American Fork

Saratoga Springs

UTAH LAKE



More public comment, Adoption and FHWA determination





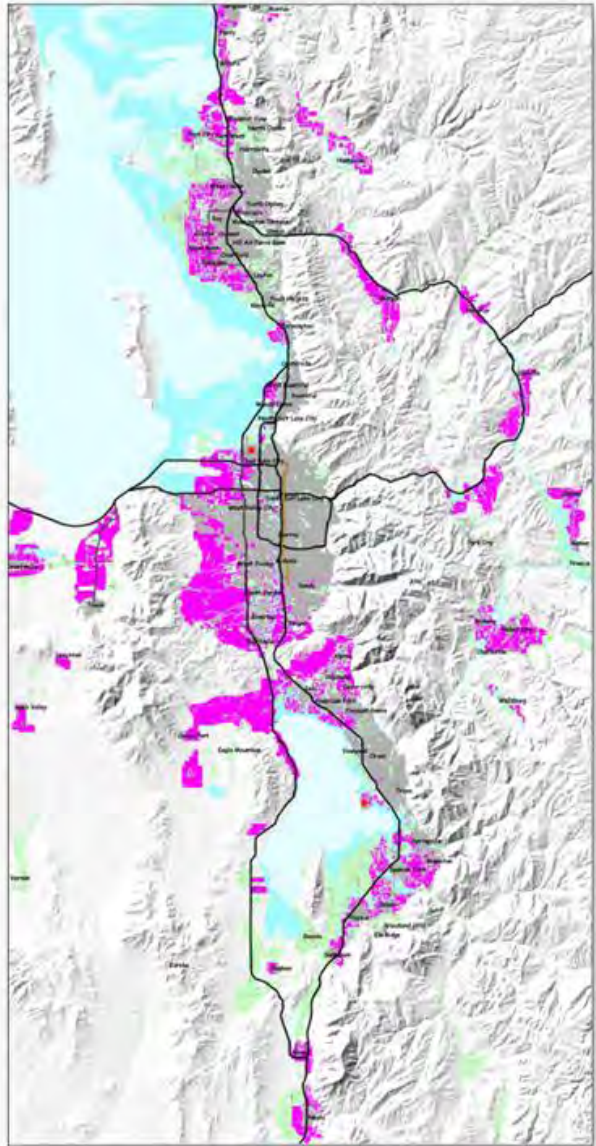
TIP



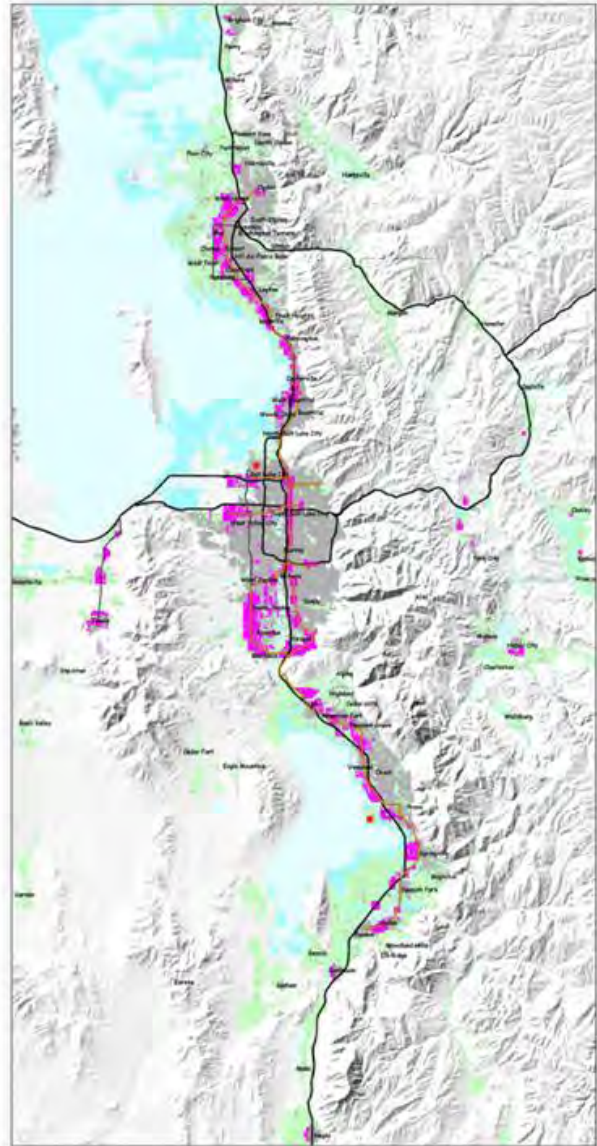
PUBLIC INVOLVEMENT



From 1997's Envision Utah



Scenario A
Auto-Oriented



Scenario D
Transit-Oriented

Advance Bridge Construction



Obligation of Federal Funds



Progress since 1990

1 Million more people

- I-15 Salt Lake Co.
- Legacy Parkway
- Trax University
- Front Runner North
- HOV lanes & ITS
- I-80 rebuild
- Trax Mid Jordan
- Trax West Valley
- Mtn.View Corridor
- I-15 Utah County
- Front Runner South
- Trax Draper
- Trax Airport
- Trails / Bikeways
- Daybreak
- Gateway
- City Creek
- **In-N-Out Burger**



Fall 2011 Consortium Issues

- Who is using the system?
- Will it be sustainable?
- Local lagging behind regional?
- Lack of public involvement in planning
- Population growth may not match projections
- Planning may not account for limited resources - water
- What barriers exist for the MTP?
- What can be done to overcome barriers?
- Hard to buy in on big vision



Key Questions

What can and should the State of Utah do, to encourage and promote the Wasatch Choice for 2040 land use and transportation linkages?

What are the keys to strengthening our regional decision making, to assure we are integrating sustainable transportation, economic development, and housing into our future RTP?



Open Meeting Discussion 15 Minutes



Angelo Papastamos, UDOT
Christopher Chesnut, UTA
Shawn Seager, MAG
Val John Halford, WFRC

