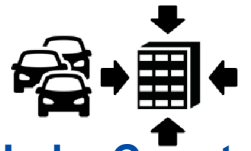
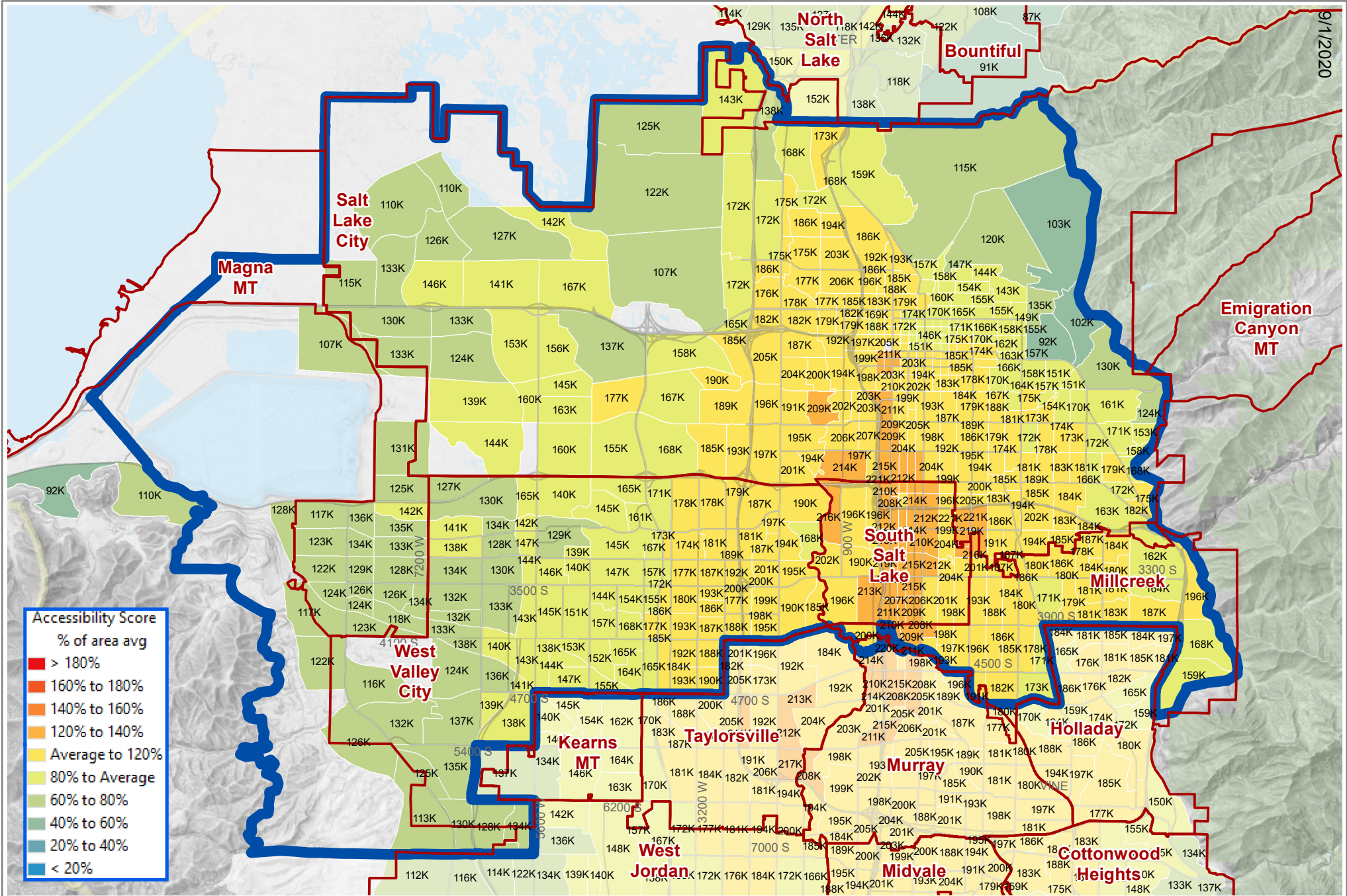


Employer/Business Access to Households: Auto

For each traffic analysis zone (TAZ), colors indicate employer/business accessibility to households, within a typical auto commute, relative to the average score for the highlighted North Salt Lake County area. The labels indicate the number of households accessible to each TAZ's workplaces within a typical auto commute. (84K = 84,000 households) More info: <https://bit.ly/2QRt9gO>



2019 - North Salt Lake County



9/1/2020