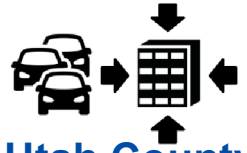
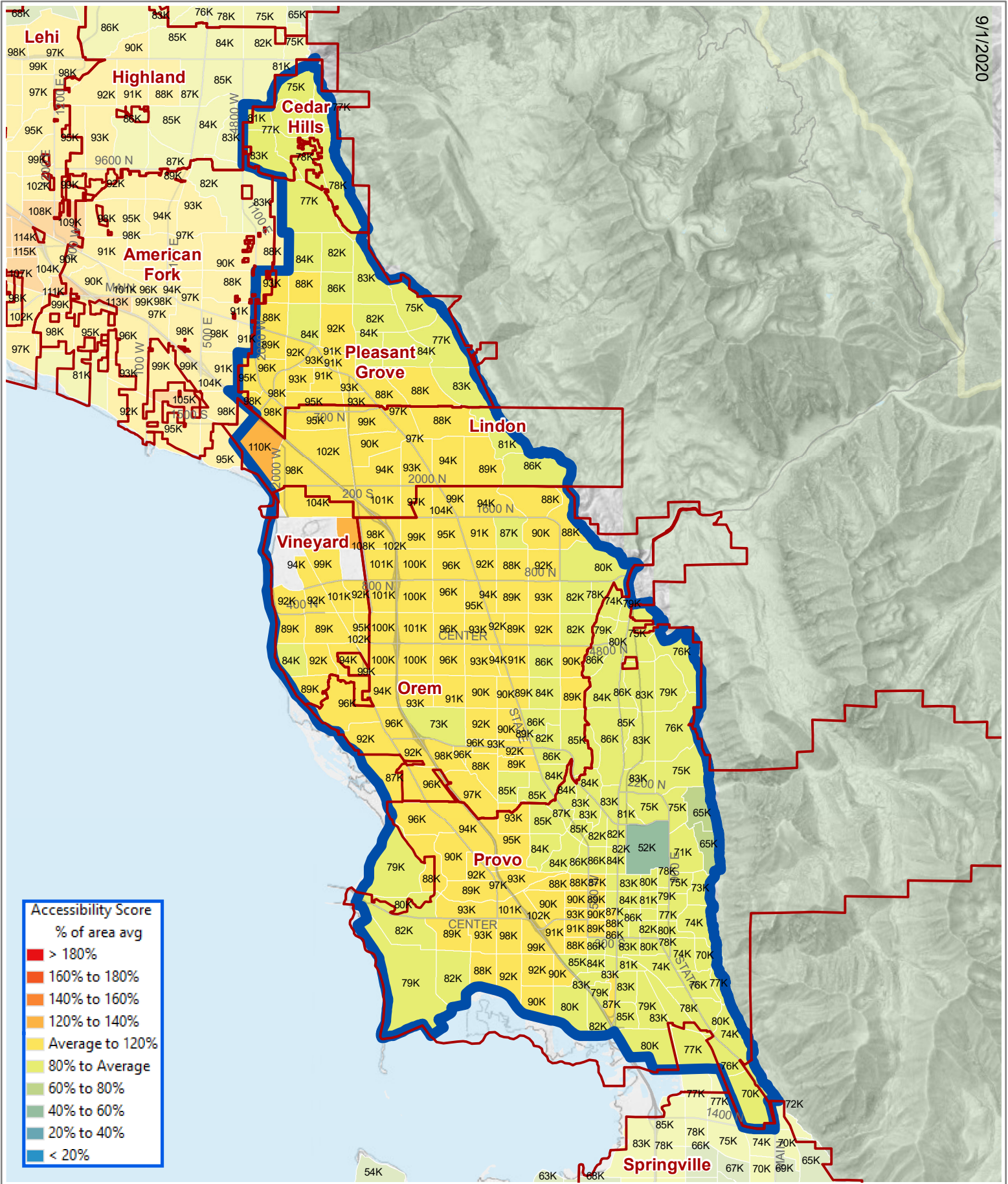


Employer/Business Access to Households: Auto



For each traffic analysis zone (TAZ), colors indicate employer/business accessibility to households, within a typical auto commute, relative to the average score for the highlighted area. The labels indicate the number of households accessible to each TAZ's workplaces within a typical auto commute. (84K = 84,000 households) More info: <https://bit.ly/2QRt9g0>

2019 - Central Utah County



9/1/2020